

# August 2014 FY 2014-2015 MONTHLY POPULATION REPORT

---

Prepared by the Division of Youth Corrections (DYC)  
Research and Evaluation Unit  
September 17, 2014



**COLORADO**

**Office of Children,  
Youth & Families**

Division of Youth Corrections

# August 2014 DYC Population Report

<b>I. Summary Population Data</b>	<b>1</b>
<b>II. Detention ADP by Facility</b>	<b>2</b>
<b>III. Commitment Services</b>	
A. State and Contract ADP by Facility	3
B. Community/Other Residential ADP by Facility	4
<b>IV. Commitment ADP and New Commitments by Region</b>	<b>5</b>
<b>V. Parole Services</b>	<b>6</b>



# August 2014 DYC Population Report

## I. Summary Population Data\*

### DETAINED YOUTH

	August 2014		YTD	
	ADP	% change	ADP	LOS
State-Operated	280.6	4.7%	274.2	15.2 days
Contracted Staff Secure	6.7	50.3%	5.5	19.4 days
<b>Total Detained</b>	<b>287.3</b>	<b>5.5%</b>	<b>279.8</b>	<b>15.3 days</b>

### COMMITTED YOUTH

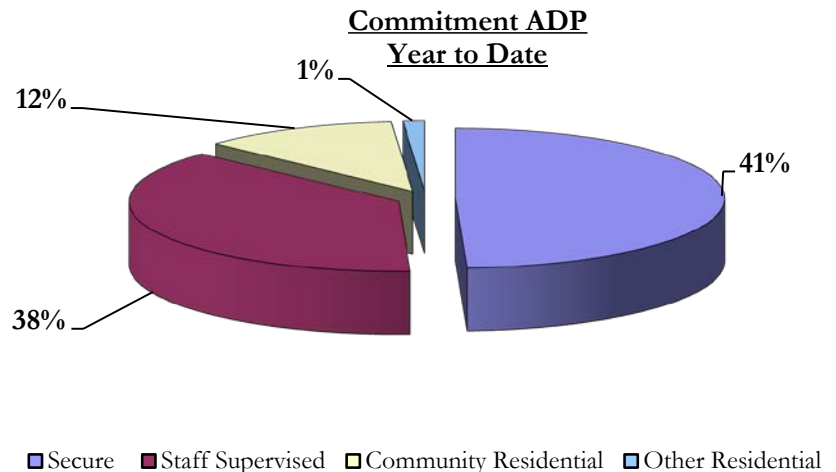
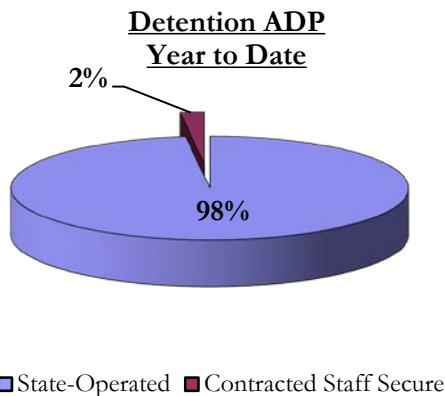
	August 2014		YTD	
	ADP	% change	ADP	LOS
Secure	380.2	0.0%	380.2	10.1 months
Staff Supervised	287.0	-2.5%	290.1	9.4 months
Community Residential	90.1	0.9%	90.7	5.7 months
Other Residential	11.9	13.5%	9.9	2.1 months
<b>Total Committed Residential</b>	<b>769.1</b>	<b>-0.7%</b>	<b>770.9</b>	<b>18.6 months</b>
<i>Committed Residential w/o Boulder</i>	<i>764.1</i>	<i>-0.5%</i>	<i>765.4</i>	<i>-</i>

### PAROLE YOUTH

	August 2014		YTD	
	ADP	% change	ADP	LOS
Parole	237.1	0.1%	237.0	6.1 months

### TOTAL STATEWIDE ADP

	August 2014		YTD	
	ADP	% change	ADP	LOS
<b>DETENTION</b>	<b>287.3</b>	<b>5.5%</b>	<b>279.8</b>	<b>15.3 days</b>
<b>COMMITMENT</b>	<b>769.1</b>	<b>-0.7%</b>	<b>770.9</b>	<b>18.6 months</b>
<b>PAROLE</b>	<b>237.1</b>	<b>0.1%</b>	<b>237.0</b>	<b>6.1 months</b>
<b>STATE TOTAL</b>	<b>1,293.5</b>	<b>0.8%</b>	<b>1,287.7</b>	<b>N/A</b>



\*Due to rounding, totals may not add to 100%.

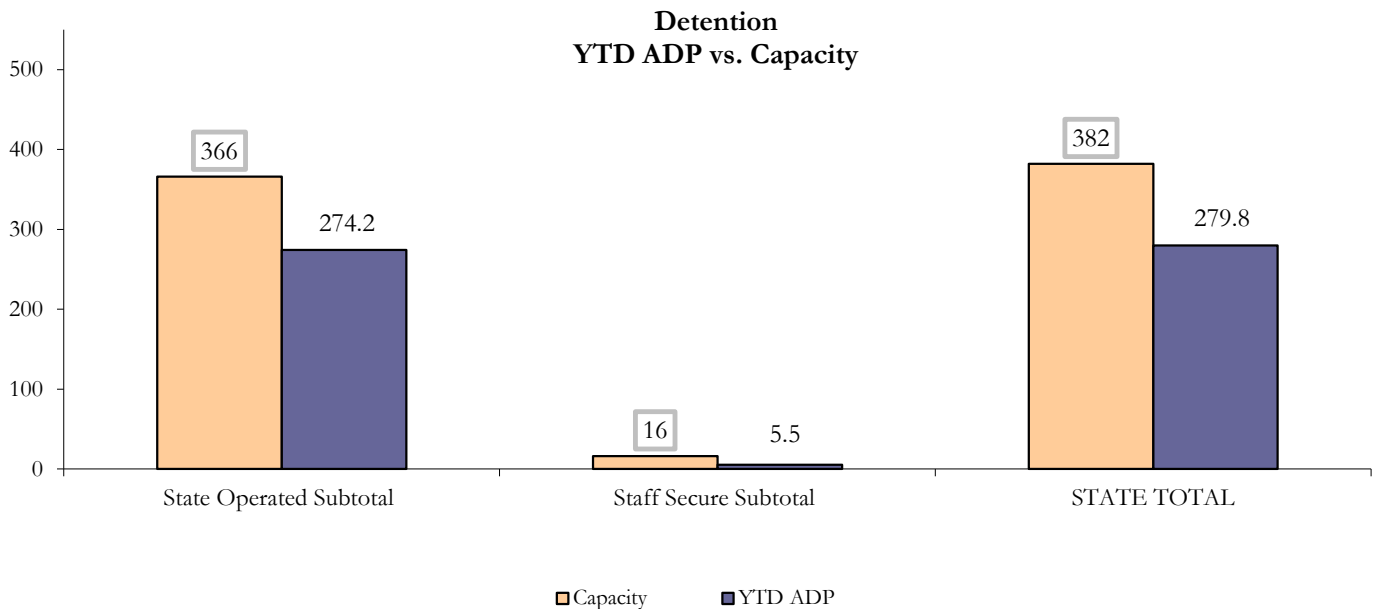
# August 2014 DYC Population Report

## II. Detention ADP by Facility

State Operated Detention							
Facility	Operating Capacity	Average Daily Population			New Admissions		LOS (days)
		Monthly	YTD	YTD % of Cap	Monthly	YTD	YTD
Adams	30	20.9	22.1	73.7%	36	78	20.4
Gilliam	64	49.5	49.2	77.0%	95	184	16.9
Grand Mesa	27	17.0	15.7	58.2%	23	49	17.0
Marvin Foote	61	50.7	49.7	81.5%	103	196	15.5
Mount View	41	30.4	31.2	76.1%	59	116	14.1
Platte Valley	64	54.4	52.6	82.3%	123	249	13.5
Pueblo	28	22.7	21.9	78.4%	45	89	13.3
Spring Creek	51	34.9	31.7	62.1%	58	121	14.9
<b>State Subtotal</b>	<b>366</b>	<b>280.6</b>	<b>274.2</b>	<b>74.9%</b>	<b>542</b>	<b>1,082</b>	<b>15.4</b>

Staff Secure Detention							
Facility	Operating Capacity	Average Daily Population			New Admissions		LOS (days)
		Monthly	YTD	YTD % of Cap	Monthly	YTD	YTD
Brown Center	3	1.9	1.4	47.5%	3	4	15.1
Robert DeNier	9	4.2	3.4	37.7%	8	17	12.4
Youthtrack San Luis Valley	4	0.6	0.7	18.0%	2	6	6.7
<b>Staff Secure Subtotal</b>	<b>16</b>	<b>6.7</b>	<b>5.5</b>	<b>34.6%</b>	<b>13</b>	<b>27</b>	<b>11.9</b>

STATEWIDE TOTAL							
	Operating Capacity	Average Daily Population			New Admissions		LOS (days)
		Monthly	YTD	YTD % of Cap	Monthly	YTD	YTD
<b>Total Detention</b>	<b>382</b>	<b>287.3</b>	<b>279.8</b>	<b>73.2%</b>	<b>555</b>	<b>1,109</b>	<b>15.3</b>



# August 2014 DYC Population Report

## III. Commitment Services

### A. State and Contract ADP by Facility

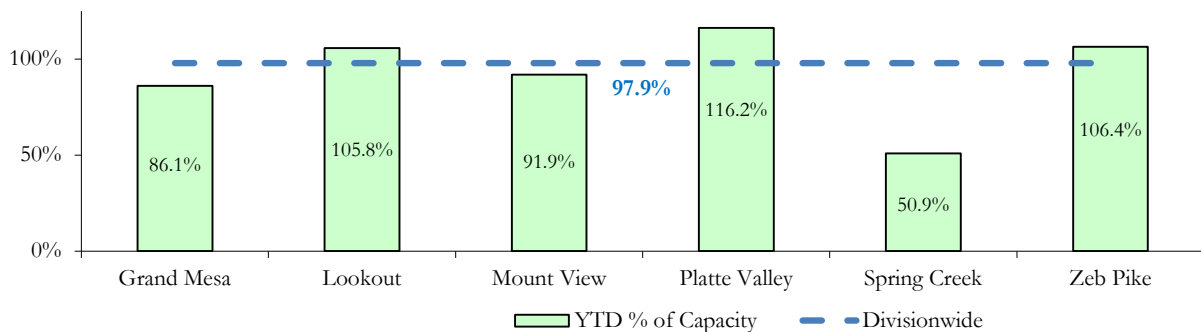
STATE SECURE				
Facility	ADP		Capacity	
	State Secure		Design	
	Monthly	YTD	Capacity	% of YTD
Adams*	0.1	0.4	-	-
Gilliam*	0.3	0.2	-	-
Grand Mesa	34.0	34.5	40	86.1%
Lookout	137.0	137.6	130	105.8%
Marvin Foote*	0.3	0.4	-	-
Mount View *	57.3	58.8	64	91.9%
Platte Valley	47.4	45.3	39	116.2%
Pueblo*	0.1	0.5	-	-
Spring Creek	14.6	14.8	29	50.9%
Zeb Pike	38.2	38.3	36	106.4%
<b>Assessment Total</b>	<b>25.4</b>	<b>29.5</b>	-	
<b>Secure Total</b>	<b>303.9</b>	<b>301.4</b>	-	
<b>GRAND TOTAL</b>	<b>329.3</b>	<b>330.8</b>	<b>338</b>	<b>97.9%</b>

\*Detention only facilities with commitment ADP due to committed youth being held in detention prior to transfer.

### CONTRACT: PRIVATE SECURE + STAFF SUPERVISED

Facility/Program	ADP	
	Monthly	YTD
(Private Secure) Betty K. Marler Center	39.3	38.2
(Private Secure) Robert DeNier	11.6	11.1
Alternative Homes For Youth - Greeley	18.4	17.8
Children's Ark at Pueblo	8.9	9.2
Devereux Cleo Wallace	17.1	17.3
Gateway Residential Program - Delta	3.0	3.0
Hilltop (Residential Youth Services)	6.8	6.7
Jefferson Hills - Aurora	45.0	46.6
Mountain Crest/Poudre Valley Health System	8.6	8.0
Ridge View	160.9	163.3
Robert Brown Center	1.9	1.2
Southern Peaks	6.6	6.8
Third Way Center - Lowry	9.8	10.3
<b>TOTAL</b>	<b>337.8</b>	<b>339.5</b>

**State Secure Commitment  
Percent of Design Capacity by Facility**



# August 2014

## DYC Population Report

### III. Commitment Services Continued

#### B. Community/Other Residential ADP by Facility

<b>COMMUNITY RESIDENTIAL</b>		
	<i>Monthly</i>	<i>YTD</i>
Community Corrections: Mesa County	2.0	1.7
Dale House Project	6.5	7.2
Denver Area Youth Services (DAYS)	2.0	2.0
Griffith Centers (SR)	7.2	7.1
Griffith Centers - Chins Up	1.0	1.0
Hilltop (Independent Living)	0.0	0.2
H.U.S.A.C. (Haven Corp.)	0.0	0.2
Job Corps	1.5	1.7
Mt Evans Qualifying House	11.0	10.8
Savio House	0.0	0.0
Summit Treatment Service, Inc	9.0	9.1
Synergy Administration	4.0	3.5
Third Way Center, Bannock	4.6	4.2
Third Way Center, Pontiac	6.8	6.6
Third Way Center, York	8.6	8.5
Third Way Center, Lincoln	5.8	7.1
Turning Point Center, Prospect	4.0	3.6
Turning Point, Mathews St.	7.2	7.6
Whimspire Child Placement	0.2	0.1
Youthtrack, San Luis Valley	2.0	1.5
Youthtrack, Work and Learn	7.6	6.9
<i>Community Subtotal</i>	<i>91.1</i>	<i>90.7</i>
<b><i>Contract/Staff Supervised + Community Total</i></b>	<b><i>428.9</i></b>	<b><i>430.2</i></b>
<b>OTHER RESIDENTIAL</b>		
	<i>Monthly</i>	<i>YTD</i>
Job Corps Parole Program (Federally funded)	4.8	4.9
Other Mental Health Facility	0.0	0.1
Residential Mental Health Program	1.5	1.2
Shelter Care (short term)	1.8	1.5
<i>Other Residential Total*</i>	<i>10.9</i>	<i>9.9</i>
<b>RESIDENTIAL TOTAL</b>	<b>769.1</b>	<b>770.9</b>

*\*Due to the relatively few youth referred to these types of placements, Other Residential Totals may not add to the sum of the individual placements due to rounding errors and the method by which ADP is calculated.*

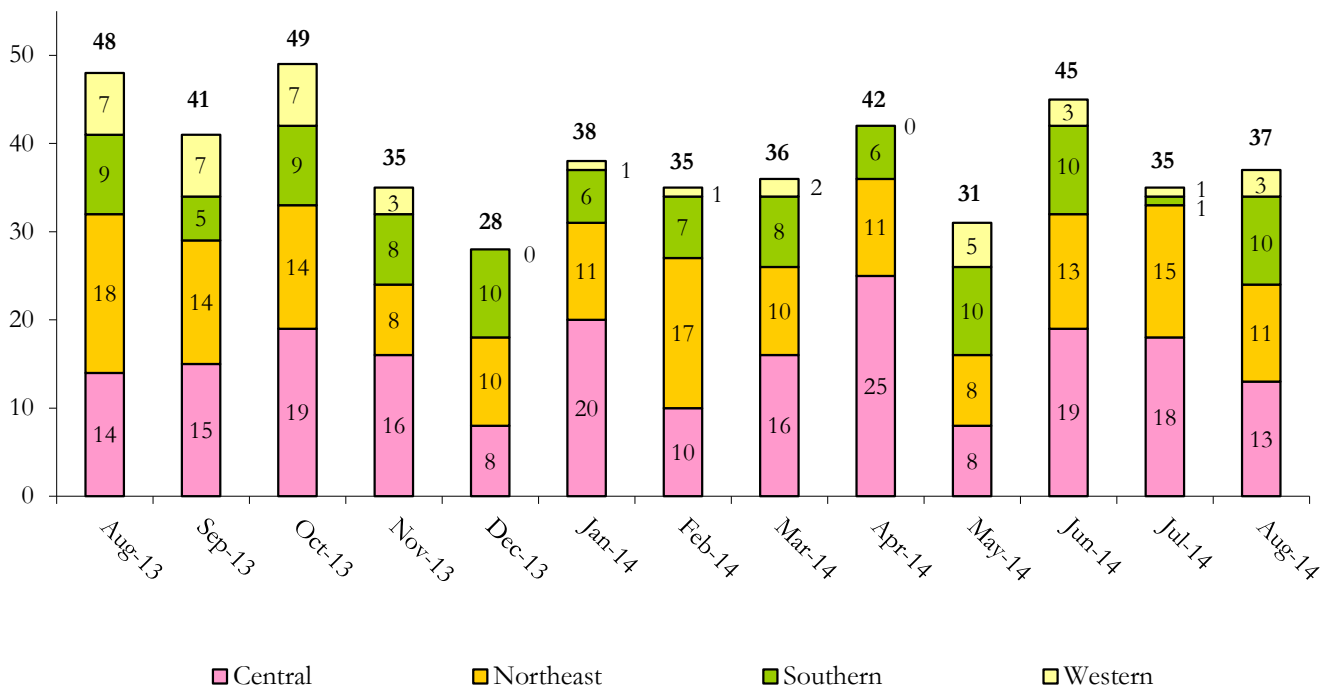
# August 2014 DYC Population Report

## IV. Commitment ADP and New Commitments

COMMITMENT ADP				
Region	Monthly		YTD	
	August	% Change	August	% Change from Prior FY
Central Region	327.2	-2.0%	331.0	-0.8%
Northeast Region	204.4	1.9%	202.0	-1.5%
Southern Region	163.5	-3.3%	165.9	5.4%
Western Region	74.0	4.4%	72.0	-27.5%
<b>Commitment ADP</b>	<b>769.1</b>	<b>-0.7%</b>	<b>770.9</b>	<b>-3.1%</b>

NEW COMMITMENTS					
	FY 13-14		FY 12-13		% Change from last YTD
	August	YTD	August	YTD	
Central Region	13	31	14	29	6.9%
Northeast Region	11	26	18	25	4.0%
Southern Region	10	11	9	18	-38.9%
Western Region	3	4	7	11	-63.6%
<b>TOTAL</b>	<b>37</b>	<b>72</b>	<b>48</b>	<b>83</b>	<b>-13.3%</b>

### Monthly New Commitments



# August 2014 DYC Population Report

## V. Parole Services

PAROLE ADP				
Region	Monthly	YTD		% Change from prev YTD
		FY 13-14	FY 12-13	
Central Region	99.0	100.2	121.7	-17.7%
Northeast Region	64.5	64.3	78.6	-18.2%
Southern Region	37.8	36.8	59.9	-38.6%
Western Region	35.9	35.8	18.0	98.9%
<b>Total</b>	<b>237.1</b>	<b>237.0</b>	<b>278.1</b>	<b>-14.8%</b>

Region	Parole Intakes		Parole Discharges		LOS
	Monthly	YTD	Monthly	YTD	
Central Region	18	27	15	34	5.8
Northeast Region	14	19	4	18	6.9
Southern Region	11	16	4	13	6.3
Western Region	1	6	3	8	5.2
<b>Total</b>	<b>44</b>	<b>68</b>	<b>26</b>	<b>73</b>	<b>6.1</b>

