

# July 2014 FY 2014-2015 MONTHLY POPULATION REPORT

---

Prepared by the Division of Youth Corrections (DYC)  
Research and Evaluation Unit  
August 29, 2014



**COLORADO**

**Office of Children,  
Youth & Families**

Division of Youth Corrections

# July 2014 DYC Population Report

<b>I. Summary Population Data</b>	<b>1</b>
<b>II. Detention ADP by Facility</b>	<b>2</b>
<b>III. Commitment Services</b>	
A. State and Contract ADP by Facility	3
B. Community/Other Residential ADP by Facility	4
<b>IV. Commitment ADP and New Commitments by Region</b>	<b>5</b>
<b>V. Parole Services</b>	<b>6</b>



# July 2014 DYC Population Report

## I. Summary Population Data\*

### DETAINED YOUTH

	July 2014		YTD	
	ADP	% change	ADP	LOS
State-Operated	268.0	-1.9%	268.0	15.2 days
Contracted Staff Secure	4.4	-8.6%	4.4	19.4 days
<b>Total Detained</b>	<b>272.4</b>	<b>-2.0%</b>	<b>272.4</b>	<b>15.0 days</b>

### COMMITTED YOUTH

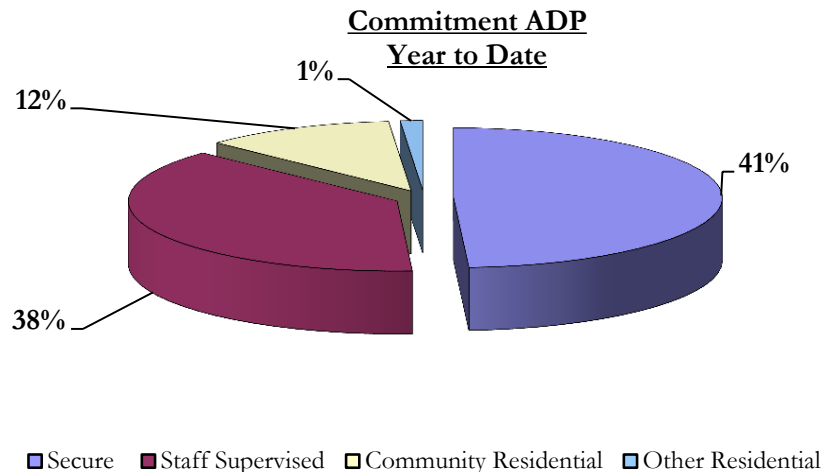
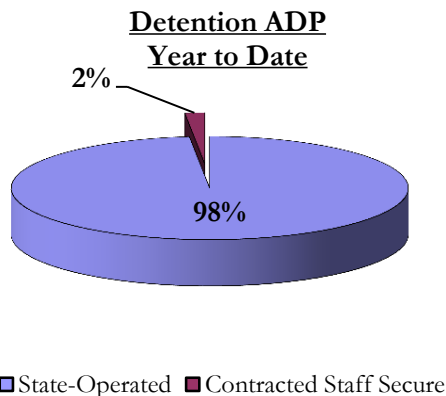
	July 2014		YTD	
	ADP	% change	ADP	LOS
Secure	380.1	-2.8%	380.1	9.5 months
Staff Supervised	294.4	3.5%	294.4	8.2 months
Community Residential	89.2	-5.8%	89.3	5.6 months
Other Residential	10.5	67.8%	10.4	1.5 months
<b>Total Committed Residential</b>	<b>774.3</b>	<b>-0.3%</b>	<b>774.3</b>	<b>17.7 months</b>
<i>Committed Residential w/o Boulder</i>	<i>768.2</i>	<i>-0.3%</i>	<i>768.2</i>	<i>-</i>

### PAROLE YOUTH

	July 2014		YTD	
	ADP	% change	ADP	LOS
Parole	236.9	-5.0%	236.9	6.3 months

### TOTAL STATEWIDE ADP

	July 2014		YTD	
	ADP	% change	ADP	LOS
DETENTION	272.4	-2.0%	272.4	15.0 days
COMMITMENT	774.3	-0.3%	774.3	17.7 months
PAROLE	236.9	-5.0%	236.9	6.3 months
<b>STATE TOTAL</b>	<b>1,283.5</b>	<b>-1.6%</b>	<b>1,283.5</b>	<b>N/A</b>



\*Due to rounding, totals may not add to 100%.

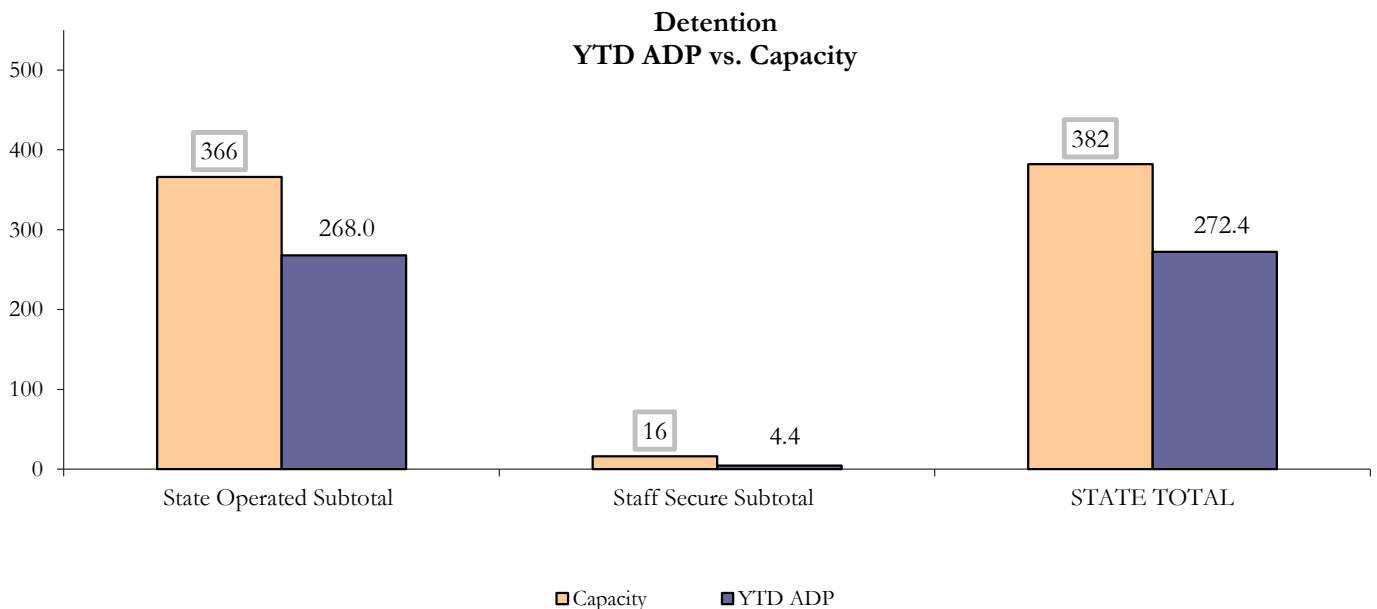
# July 2014 DYC Population Report

## II. Detention ADP by Facility

State Operated Detention							
Facility	Operating Capacity	Average Daily Population			New Admissions		LOS (days)
		Monthly	YTD	YTD % of Cap	Monthly	YTD	YTD
Adams	30	23.3	23.3	77.6%	42	42	23.7
Gilliam	64	49.0	49.0	76.5%	89	89	16.8
Grand Mesa	27	14.4	14.4	53.3%	26	26	11.5
Marvin Foote	61	48.7	48.7	79.8%	93	93	16.3
Mount View	41	31.7	31.7	77.4%	57	57	11.5
Platte Valley	64	51.3	51.3	80.1%	127	127	12.1
Pueblo	28	21.1	21.1	75.5%	44	44	15.6
Spring Creek	51	28.5	28.5	55.8%	63	63	14.1
<b>State Subtotal</b>	<b>366</b>	<b>268.0</b>	<b>268.0</b>	<b>73.2%</b>	<b>541</b>	<b>541</b>	<b>15.1</b>

Staff Secure Detention							
Facility	Operating Capacity	Average Daily Population			New Admissions		LOS (days)
		Monthly	YTD	YTD % of Cap	Monthly	YTD	YTD
Brown Center	3	1.0	1.0	32.2%	1	1	32.9
Robert DeNier	9	2.6	2.6	28.9%	9	9	10.7
Youthtrack San Luis Valley	4	0.9	0.9	21.6%	4	4	6.7
<b>Staff Secure Subtotal</b>	<b>16</b>	<b>4.4</b>	<b>4.4</b>	<b>27.7%</b>	<b>14</b>	<b>14</b>	<b>11.1</b>

STATEWIDE TOTAL							
	Operating Capacity	Average Daily Population			New Admissions		LOS (days)
		Monthly	YTD	YTD % of Cap	Monthly	YTD	YTD
<b>Total Detention</b>	<b>382</b>	<b>272.4</b>	<b>272.4</b>	<b>71.3%</b>	<b>555</b>	<b>555</b>	<b>15.0</b>



# July 2014 DYC Population Report

## III. Commitment Services

### A. State and Contract ADP by Facility

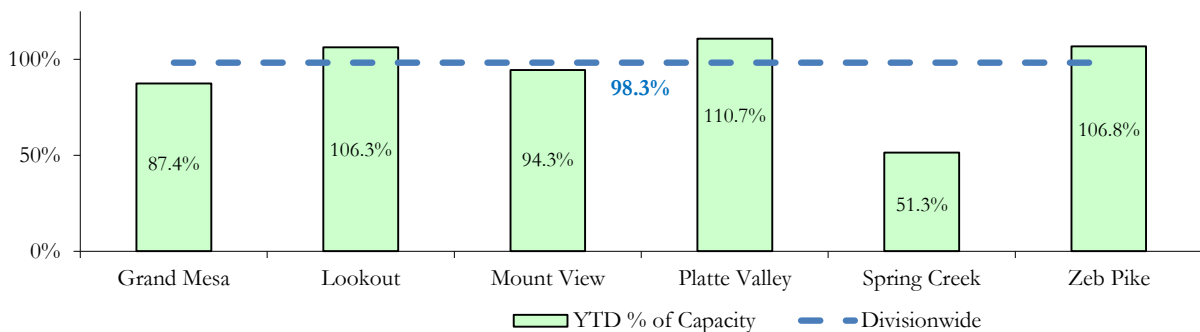
STATE SECURE				
Facility	ADP		Capacity	
	State Secure		Design	
	Monthly	YTD	Capacity	% of YTD
Adams*	0.7	0.7	-	-
Gilliam*	0.1	0.1	-	-
Grand Mesa	34.9	34.9	40	87.4%
Lookout	138.1	138.1	130	106.3%
Marvin Foote*	0.6	0.6	-	-
Mount View**	60.4	60.4	64	94.3%
Platte Valley	43.2	43.2	39	110.7%
Pueblo*	1.0	1.0	-	-
Spring Creek	14.9	14.9	29	51.3%
Zeb Pike	38.4	38.4	36	106.8%
<b>Assessment Total</b>	<b>34.9</b>	<b>34.9</b>	-	
<b>Secure Total</b>	<b>297.4</b>	<b>297.4</b>	-	
<b>GRAND TOTAL</b>	<b>332.3</b>	<b>332.3</b>	<b>338</b>	<b>98.3%</b>

\*Detention only facilities with commitment ADP due to committed youth being held in detention prior to transfer.

\*\*Commitment capacity at Mount View increased from 50 to 64 as of April 1, 2014, with the addition of 14 assessment beds.

CONTRACT: PRIVATE SECURE + STAFF SUPERVISED		
Facility/Program	ADP	
	Monthly	YTD
(Private Secure) Betty K. Marler Center	37.2	37.2
(Private Secure) Robert DeNier	10.6	10.6
Alternative Homes For Youth - Greeley	17.2	17.2
Children's Ark at Pueblo	9.6	9.6
Devereux Cleo Wallace	17.6	17.6
Gateway Residential Program - Delta	3.0	3.0
Hilltop (Residential Youth Services)	6.5	6.5
Jefferson Hills - Aurora	48.2	48.2
Mountain Crest/Poudre Valley Health System	7.4	7.4
Ridge View	165.7	165.7
Robert Brown Center	0.6	0.6
Southern Peaks	6.9	6.9
Third Way Center - Lowry	11.7	11.7
<b>TOTAL</b>	<b>342.2</b>	<b>342.2</b>

**State Secure Commitment  
Percent of Design Capacity by Facility**



# July 2014

## DYC Population Report

### III. Commitment Services Continued

#### B. Community/Other Residential ADP by Facility

<b>COMMUNITY RESIDENTIAL</b>		
	<i>Monthly</i>	<i>YTD</i>
Community Corrections: Mesa County	1.5	1.5
Dale House Project	7.9	7.9
Denver Area Youth Services (DAYS)	2.0	2.0
Griffith Centers (SR)	7.0	7.0
Griffith Centers - Chins Up	1.0	1.0
Hilltop (Independent Living)	0.3	0.3
H.U.S.A.C. (Haven Corp.)	0.4	0.4
Job Corps	1.9	1.9
Mt Evans Qualifying House	10.5	10.5
Savio House	0.1	0.1
Summit Treatment Service, Inc	9.3	9.3
Synergy Administration	3.0	3.0
Third Way Center, Bannock	3.7	3.7
Third Way Center, Pontiac	6.4	6.4
Third Way Center, York	7.4	7.4
Third Way Center, Lincoln	8.3	8.3
Turning Point Center, Prospect	3.2	3.2
Turning Point, Mathews St.	8.1	8.1
Youthtrack, San Luis Valley	1.0	1.1
Youthtrack, Work and Learn	6.3	6.3
<i>Community Subtotal</i>	<i>89.2</i>	<i>89.3</i>
<b><i>Contract/Staff Supervised + Community Total</i></b>	<b><i>431.4</i></b>	<b><i>431.5</i></b>
<b>OTHER RESIDENTIAL</b>		
	<i>Monthly</i>	<i>YTD</i>
Job Corps Parole Program (Federally funded)	5.1	5.1
Other Mental Health Facility	0.2	0.2
Residential Mental Health Program	1.0	1.0
Shelter Care (short term)	1.3	1.3
<i>Other Residential Total*</i>	<i>10.5</i>	<i>10.4</i>
<b>RESIDENTIAL TOTAL</b>	<b>774.3</b>	<b>774.3</b>

*\*Due to the relatively few youth referred to these types of placements, Other Residential Totals may not add to the sum of the individual placements due to rounding errors and the method by which ADP is calculated.*

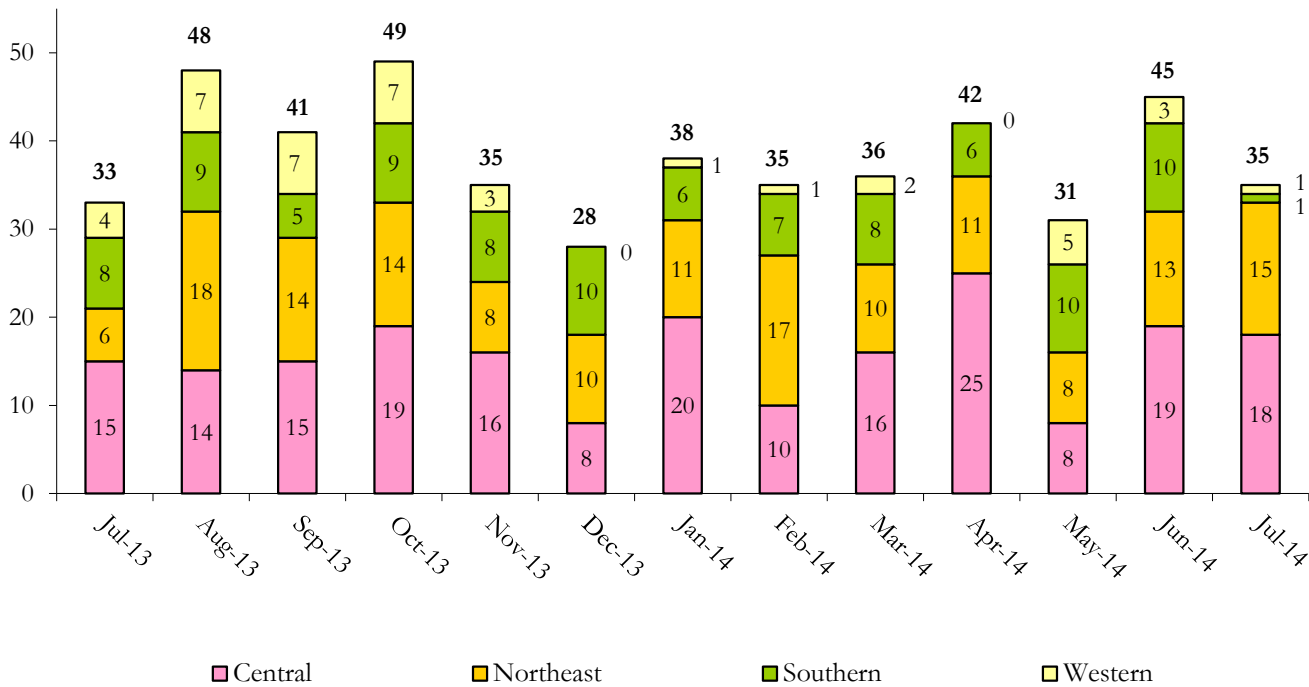
# July 2014 DYC Population Report

## IV. Commitment ADP and New Commitments

COMMITMENT ADP				
Region	Monthly		YTD	
	July	% Change	July	% Change from Prior FY
Central Region	333.7	-0.9%	333.7	0.1%
Northeast Region	200.6	3.4%	200.6	-1.2%
Southern Region	169.1	-0.2%	169.1	8.6%
Western Region	70.9	-6.7%	70.9	-29.3%
<b>Commitment ADP</b>	<b>774.3</b>	<b>-0.3%</b>	<b>774.3</b>	<b>-2.3%</b>

NEW COMMITMENTS					
	FY 13-14		FY 12-13		% Change from last YTD
	July	YTD	July	YTD	
Central Region	18	18	15	15	20.0%
Northeast Region	15	15	6	6	150.0%
Southern Region	1	1	8	8	-87.5%
Western Region	1	1	4	4	-75.0%
<b>TOTAL</b>	<b>35</b>	<b>35</b>	<b>33</b>	<b>33</b>	<b>6.1%</b>

### Monthly New Commitments



# July 2014 DYC Population Report

## V. Parole Services

PAROLE ADP				
Region	Monthly	YTD		% Change from prev YTD
		FY 13-14	FY 12-13	
Central Region	101.0	101.0	123.9	-18.5%
Northeast Region	64.1	64.1	81.4	-21.3%
Southern Region	36.8	36.8	59.0	-37.7%
Western Region	35.0	35.0	18.1	93.8%
<b>Total</b>	<b>236.9</b>	<b>236.9</b>	<b>282.4</b>	<b>-16.1%</b>

Region	Parole Intakes		Parole Discharges		LOS
	Monthly	YTD	Monthly	YTD	
Central Region	9	9	20	20	5.8
Northeast Region	5	5	14	14	7.5
Southern Region	5	5	9	9	6.5
Western Region	4	4	5	5	4.8
<b>Total</b>	<b>23</b>	<b>23</b>	<b>48</b>	<b>48</b>	<b>6.3</b>

