

June 2014 FY 2013-2014 MONTHLY POPULATION REPORT

Prepared by the Division of Youth Corrections (DYC)
Research and Evaluation Unit
July 21, 2014



COLORADO

**Office of Children,
Youth & Families**

Division of Youth Corrections

June 2014 DYC Population Report

I. Summary Population Data	1
II. Detention ADP by Facility	2
III. Commitment Services	
A. State and Contract ADP by Facility	3
B. Community/Other Residential ADP by Facility	4
IV. Commitment ADP and New Commitments by Region	5
V. Parole Services	6



June 2014 DYC Population Report

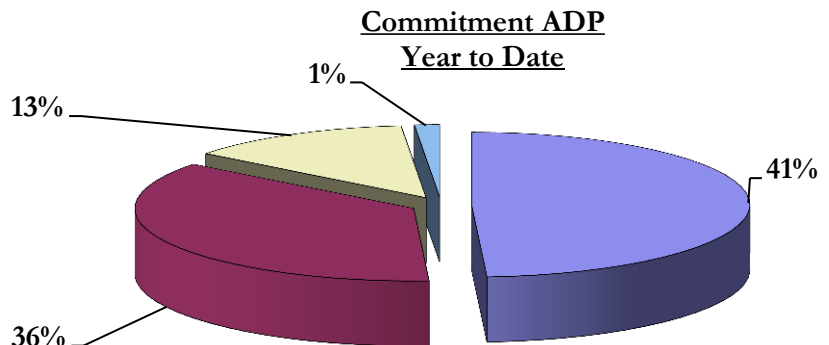
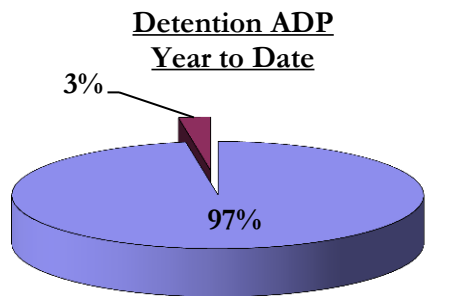
I. Summary Population Data*

DETAINED YOUTH				
	June 2014		YTD	
	ADP	% change	ADP	LOS
State-Operated	273.2	-5.6%	283.4	15.2 days
Contracted Staff Secure	4.8	-32.7%	7.3	19.4 days
Total Detained	278.0	-6.3%	290.6	15.4 days

COMMITTED YOUTH				
	June 2014		YTD	
	ADP	% change	ADP	LOS
Secure	391.1	-1.7%	391.7	9.4 months
Staff Supervised	284.3	2.0%	289.9	11.0 months
Community Residential	99.9	0.3%	104.3	5.9 months
Other Residential	6.2	4.5%	11.5	2.2 months
Total Committed Residential	776.4	-0.8%	797.4	19.3 months
<i>Committed Residential w/o Boulder</i>	<i>770.4</i>	<i>-0.9%</i>	<i>792.9</i>	-

PAROLE YOUTH				
	June 2014		YTD	
	ADP	% change	ADP	LOS
Parole	249.3	-3.7%	281.3	6.7 months

TOTAL STATEWIDE ADP				
	June 2014		YTD	
	ADP	% change	ADP	LOS
DETENTION	278.0	-6.3%	290.6	15.4 days
COMMITMENT	776.4	-0.8%	797.4	19.3 months
PAROLE	249.3	-3.7%	281.3	6.7 months
STATE TOTAL	1,303.8	-2.6%	1,369.4	N/A



■ State-Operated ■ Contracted Staff Secure

■ Secure ■ Staff Supervised ■ Community Residential ■ Other Residential

*Due to rounding, totals may not add to 100%.

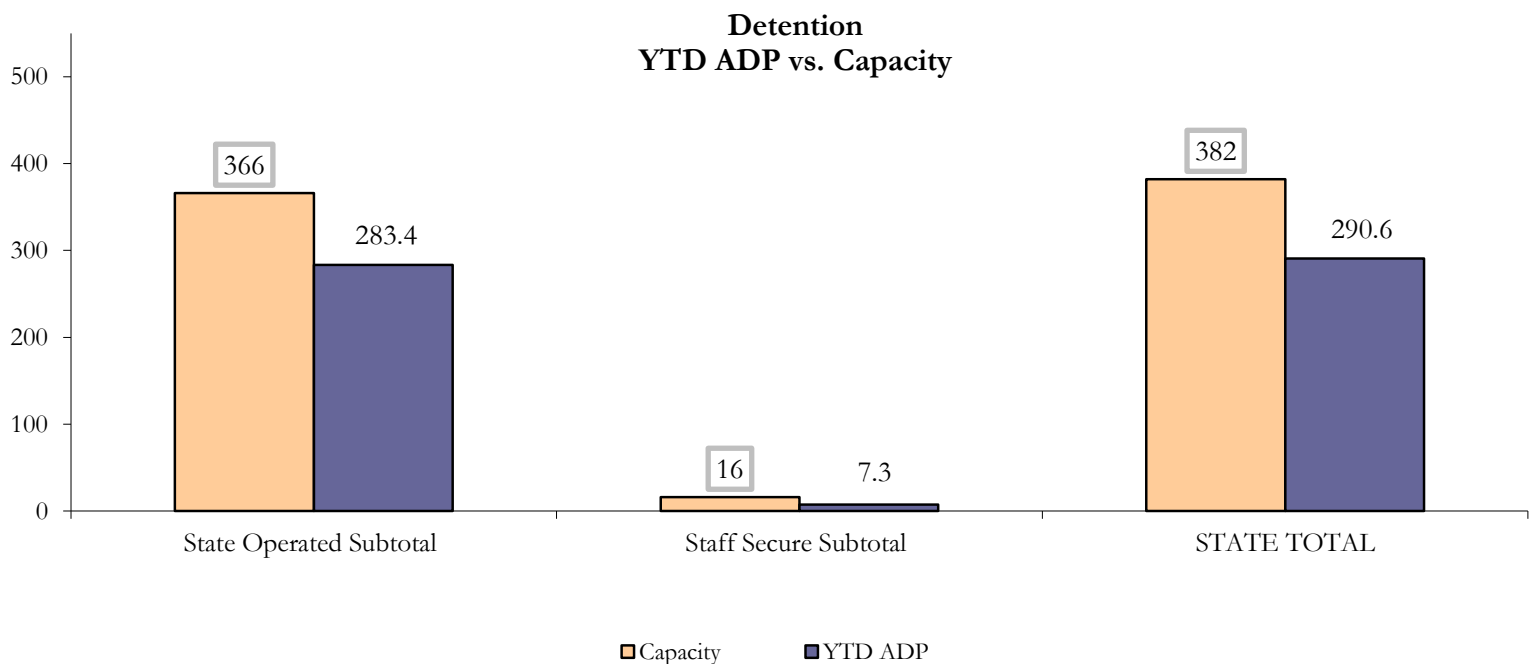
June 2014 DYC Population Report

II. Detention ADP by Facility

State Operated Detention							
Facility	Operating Capacity	Average Daily Population			New Admissions		LOS (days)
		Monthly	YTD	YTD % of Cap	Monthly	YTD	YTD
Adams	30	26.4	23.4	78.1%	43	483	17.3
Gilliam	64	47.8	55.9	87.3%	63	1,075	18.8
Grand Mesa	27	13.2	15.1	56.0%	19	331	15.5
Marvin Foote	61	51.0	46.9	76.8%	93	1,232	14.6
Mount View	41	24.5	29.3	71.5%	59	764	13.0
Platte Valley	64	49.7	48.8	76.2%	103	1,331	13.1
Pueblo	28	21.8	21.9	78.2%	50	554	13.2
Spring Creek	51	38.9	42.1	82.5%	58	868	17.7
State Subtotal	366	273.2	283.4	77.4%	488	6,638	15.3

Staff Secure Detention							
Facility	Operating Capacity	Average Daily Population			New Admissions		LOS (days)
		Monthly	YTD	YTD % of Cap	Monthly	YTD	YTD
Brown Center	3	0.7	1.0	32.3%	1	25	14.6
Robert DeNier	9	2.3	4.2	46.2%	7	65	24.5
Youthtrack San Luis Valley	4	1.9	2.1	53.4%	2	56	13.7
Staff Secure Subtotal	16	4.8	7.3	45.4%	10	146	18.8

STATEWIDE TOTAL							
	Operating Capacity	Average Daily Population			New Admissions		LOS (days)
		Monthly	YTD	YTD % of Cap	Monthly	YTD	YTD
Total Detention	382	278.0	290.6	76.1%	498	6,784	15.4



June 2014 DYC Population Report

III. Commitment Services

A. State and Contract ADP by Facility

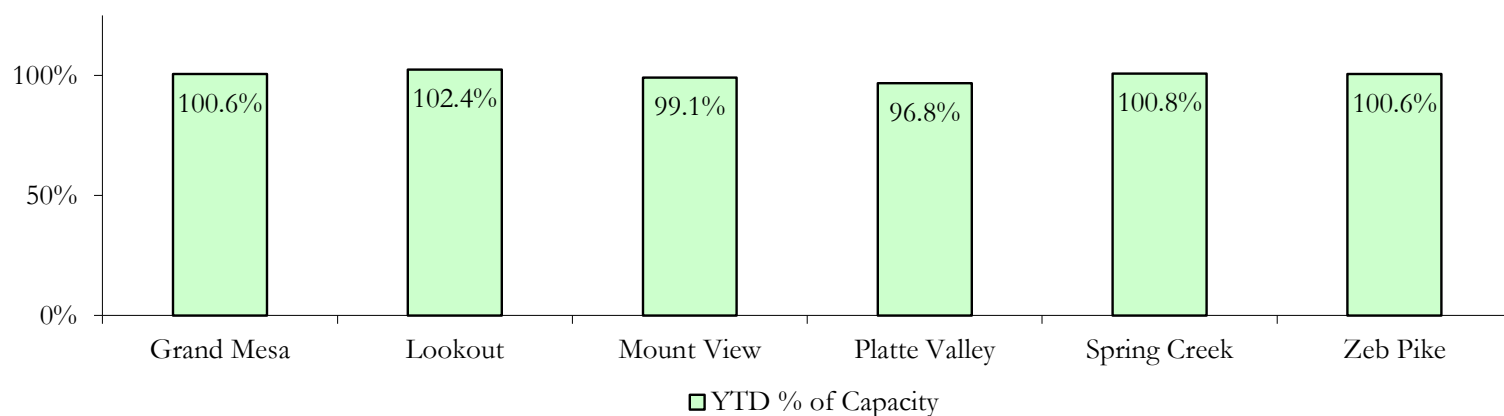
STATE SECURE				
Facility	ADP		Capacity	
	State Secure		Design	
	Monthly	YTD	Capacity	% of YTD
Adams*	0.6	0.2	-	-
Gilliam*	0.7	0.3	-	-
Grand Mesa	39.2	40.2	40	100.6%
Lookout	136.8	133.2	130	102.4%
Marvin Foote*	1.1	0.4	-	-
Mount View**	64.0	63.4	64	99.1%
Platte Valley	41.1	37.7	39	96.8%
Pueblo*	0.2	0.5	-	-
Spring Creek	21.7	29.2	29	100.8%
Zeb Pike	37.7	36.2	36	100.6%
Assessment Total	36.6	35.9	-	
Secure Total	306.5	305.4	-	
GRAND TOTAL	343.1	341.3	338	101.0%

*Detention only facilities with commitment ADP due to committed youth being held in detention prior to transfer.

**Commitment capacity at Mount View increased from 50 to 64 as of April 1, 2014, with the addition of 14 assessment beds.

CONTRACT: PRIVATE SECURE + STAFF SUPERVISED		
Facility/Program	ADP	
	Monthly	YTD
(Private Secure) Betty K. Marler Center	37.5	39.9
(Private Secure) Robert DeNier	10.5	10.5
Alternative Homes For Youth - Greeley	13.2	13.4
Children's Ark at Pueblo	9.8	7.5
Devereux Cleo Wallace	17.6	23.5
Gateway Residential Program - Delta	2.8	3.3
Hilltop (Residential Youth Services)	6.4	3.3
Jefferson Hills - Aurora	45.8	39.0
Mountain Crest/Poudre Valley Health System	7.0	8.3
Ridge View	163.6	169.4
Robert Brown Center	0.2	2.8
Southern Peaks	7.6	7.7
Third Way Center - Lowry	10.4	11.8
TOTAL	332.3	340.3

**State Secure Commitment
Percent of Design Capacity by Facility**



June 2014 DYC Population Report

III. Commitment Services Continued

B. Community/Other Residential ADP by Facility

COMMUNITY RESIDENTIAL		
	<i>Monthly</i>	<i>YTD</i>
Ariel Clinical Services	0.0	0.7
Community Corrections: Comcor	0.0	0.3
Community Corrections: Mesa County	1.0	2.5
Community Corrections and Work Release	0.0	0.8
Dale House Project	7.2	8.8
Denver Area Youth Services (DAYS)	2.2	0.9
Gateway Residential Program - Grand Junction	0.2	0.9
Griffith Centers (SR)	8.0	6.8
Griffith Centers - Chins Up	0.1	0.0
Hilltop (Independent Living)	1.0	0.2
H.U.S.A.C. (Haven Corp.)	1.0	0.2
Job Corps	3.3	4.3
Kids Crossing	0.0	1.1
Mt Evans Qualifying House	8.7	9.8
Savio House	1.0	1.2
Southern Region Independent Foster Home	0.0	0.7
Summit Treatment Service, Inc	5.8	9.2
Synergy Administration	2.0	3.0
Third Way Center, Bannock	3.7	3.0
Third Way Center, Pontiac	8.6	6.5
Third Way Center, York	10.8	9.8
Third Way Center, Lincoln	9.0	10.4
Turning Point Center, Prospect	3.0	3.0
Turning Point, Mathews St.	9.8	6.2
Whimspire Child Placement	0.1	2.5
Youthtrack, San Luis Valley	1.0	3.6
Youthtrack, Work and Learn	7.2	7.7
<i>Community Subtotal</i>	<i>94.8</i>	<i>104.3</i>
<i>Contract/Staff Supervised + Community Total</i>	<i>427.1</i>	<i>444.6</i>
OTHER RESIDENTIAL		
	<i>Monthly</i>	<i>YTD</i>
CMHI-Ft. Logan	0.0	0.1
CMHI-Pueblo	0.0	0.1
Job Corps Parole Program (Federally funded)	3.5	1.8
Other Mental Health Facility	0.0	0.6
Residential Mental Health Program	0.7	1.5
Residential Work Program	0.0	1.4
Shelter Care (short term)	2.1	1.6
<i>Other Residential Total*</i>	<i>6.2</i>	<i>11.5</i>
RESIDENTIAL TOTAL	776.4	797.4

**Due to the relatively few youth referred to these types of placements, Other Residential Totals may not add to the sum of the individual placements due to rounding errors and the method by which ADP is calculated.*

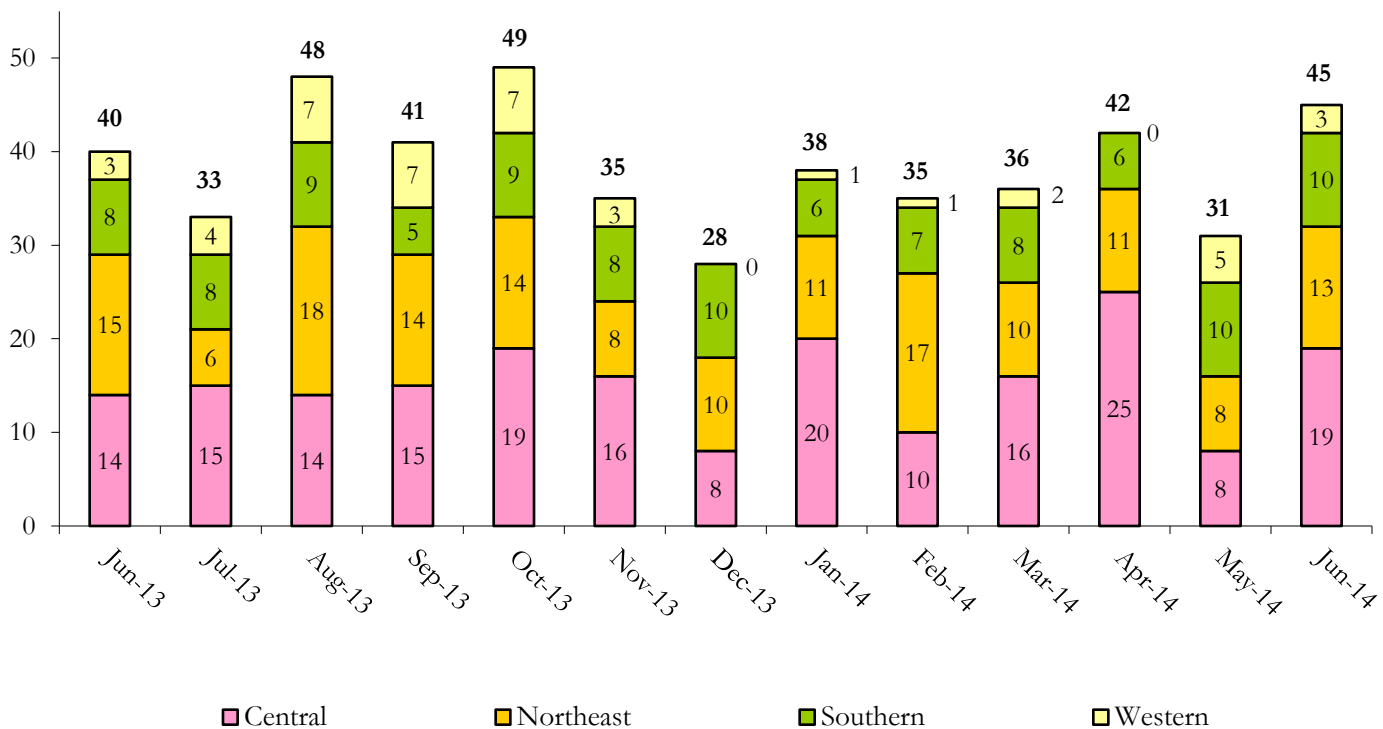
June 2014 DYC Population Report

IV. Commitment ADP and New Commitments

COMMITMENT ADP				
Region	Monthly		YTD	
	June	% Change	June	% Change from Prior FY
Central Region	336.9	-0.9%	343.1	-4.7%
Northeast Region	194.1	-1.7%	203.4	-6.1%
Southern Region	169.5	3.4%	158.5	-9.0%
Western Region	76.0	-6.2%	92.4	-7.6%
Commitment ADP	776.4	-0.8%	797.4	-6.3%

NEW COMMITMENTS					
	FY 13-14		FY 12-13		% Change from last YTD
	June	YTD	June	YTD	
Central Region	19	185	14	199	-7.0%
Northeast Region	13	145	15	132	9.8%
Southern Region	10	102	8	99	3.0%
Western Region	3	42	3	58	-27.6%
TOTAL	45	474	40	488	-2.9%

Monthly New Commitments



June 2014 DYC Population Report

V. Parole Services

PAROLE ADP				
Region	Monthly	YTD		% Change from prev YTD
		FY 13-14	FY 12-13	
Central Region	109.9	114.9	136.1	-15.5%
Northeast Region	68.2	82.4	99.0	-16.8%
Southern Region	37.0	53.8	66.6	-19.2%
Western Region	34.1	30.3	30.0	1.0%
Total	249.3	281.3	331.6	-15.2%

Region	Parole Intakes		Parole Discharges		
	Monthly	YTD	Monthly	YTD	LOS
Central Region	20	197	19	221	6.7
Northeast Region	8	136	17	172	6.3
Southern Region	5	83	7	109	6.8
Western Region	7	63	7	52	7.7
Total	40	479	50	554	6.7

