

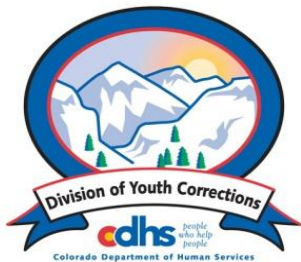
May 2014 MONTHLY POPULATION REPORT FY 2013 - 2014

Prepared by the Division of Youth Corrections

(DYC)

Research and Evaluation Unit

June 18, 2014



Colorado Department of Human Services

Division of Youth Corrections

Working with Colorado Communities to Achieve Justice

May 2014 DYC Population Report

I. Summary Population Data	1
II. Detention ADP by Facility	2
III. Commitment Services	
A. State and Contract ADP by Facility	3
B. Community/Other Residential ADP by Facility	4
IV. Commitment ADP and New Commitments by Region	5
V. Parole Services	6



May 2014 DYC Population Report

I. Summary Population Data*

DETAINED YOUTH

	May 2014		YTD	
	ADP	% change	ADP	LOS
State-Operated	289.5	1.7%	284.3	15.2 days
Contracted Staff Secure	7.2	20.9%	7.5	19.4 days
Total Detained	296.7	2.1%	291.8	15.3 days

COMMITTED YOUTH

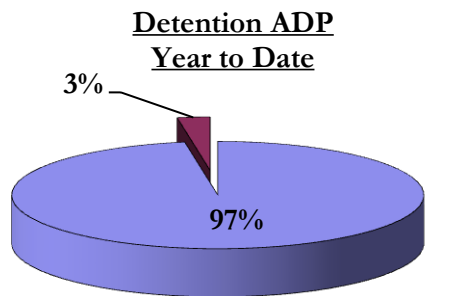
	May 2014		YTD	
	ADP	% change	ADP	LOS
Secure	397.9	-0.5%	391.8	9.5 months
Staff Supervised	278.9	2.9%	290.6	11.1 months
Community Residential	99.7	-8.3%	105.4	5.8 months
Other Residential	6.0	-32.7%	11.0	2.2 months
Total Committed Residential	782.4	-0.8%	798.8	19.4 months
<i>Committed Residential w/o Boulder</i>	<i>777.8</i>	<i>-1.0%</i>	<i>794.4</i>	<i>-</i>

PAROLE YOUTH

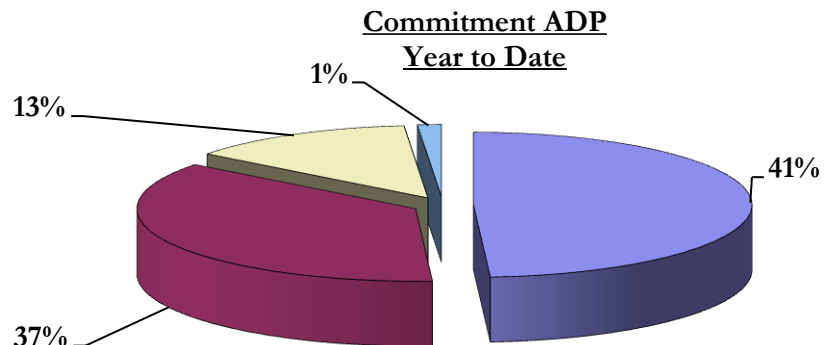
	May 2014		YTD	
	ADP	% change	ADP	LOS
Parole	258.9	-2.1%	284.0	6.7 months

TOTAL STATEWIDE ADP

	May 2014		YTD	
	ADP	% change	ADP	LOS
DETENTION	296.7	2.1%	291.8	15.3 days
COMMITMENT	782.4	-0.8%	798.8	19.4 months
PAROLE	258.9	-2.1%	284.0	6.7 months
STATE TOTAL	1,338.0	-0.4%	1,374.6	N/A



■ State-Operated ■ Contracted Staff Secure



■ Secure ■ Staff Supervised ■ Community Residential ■ Other Residential

*Due to rounding, totals may not add to 100%.

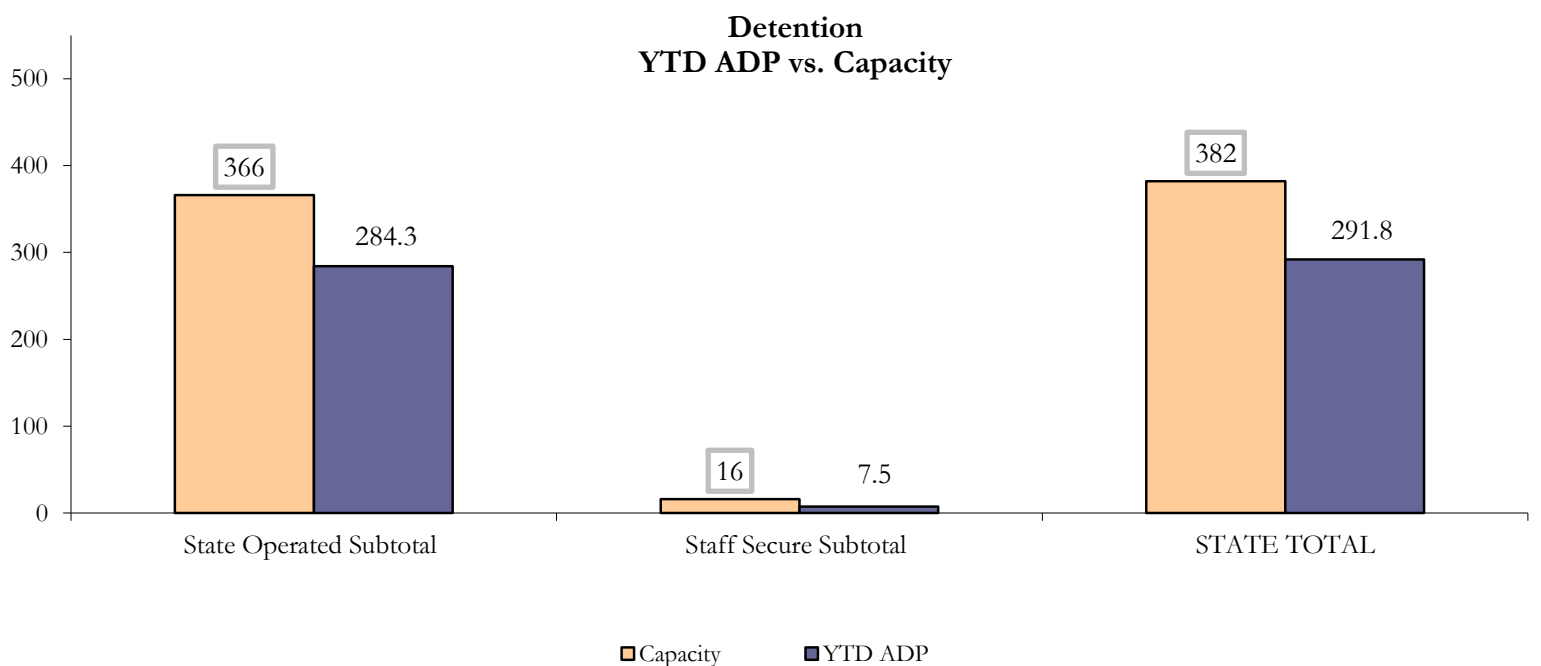
May 2014 DYC Population Report

II. Detention ADP by Facility

State Operated Detention							
Facility	Operating Capacity	Average Daily Population			New Admissions		LOS (days)
		Monthly	YTD	YTD % of Cap	Monthly	YTD	YTD
Adams	30	26.4	23.2	77.3%	41	440	16.7
Gilliam	64	57.3	56.6	88.5%	97	1,012	18.7
Grand Mesa	27	13.4	15.3	56.6%	37	312	15.7
Marvin Foote	61	45.1	46.5	76.2%	111	1,139	14.6
Mount View	41	27.3	29.7	72.5%	80	705	13.3
Platte Valley	64	53.6	48.7	76.1%	132	1,229	13.0
Pueblo	28	22.2	21.9	78.3%	50	504	13.1
Spring Creek	51	44.3	42.4	83.1%	86	810	17.1
State Subtotal	366	289.5	284.3	77.7%	634	6,151	15.2

Staff Secure Detention							
Facility	Operating Capacity	Average Daily Population			New Admissions		LOS (days)
		Monthly	YTD	YTD % of Cap	Monthly	YTD	YTD
Brown Center	3	1.7	1.0	33.3%	4	24	15.0
Robert DeNier	9	2.7	4.3	48.1%	8	58	26.5
Youthtrack San Luis Valley	4	2.8	2.2	54.0%	6	54	13.0
Staff Secure Subtotal	16	7.2	7.5	46.8%	18	136	19.4

STATEWIDE TOTAL							
	Operating Capacity	Average Daily Population			New Admissions		LOS (days)
		Monthly	YTD	YTD % of Cap	Monthly	YTD	YTD
Total Detention	382	296.7	291.8	76.4%	652	6,287	15.3



May 2014 DYC Population Report

III. Commitment Services

A. State and Contract ADP by Facility

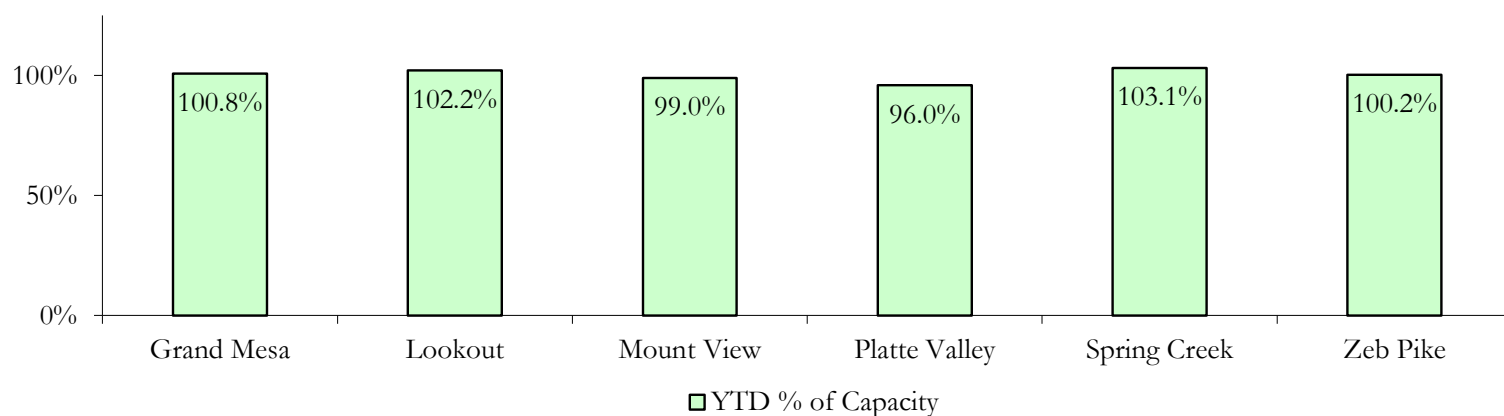
STATE SECURE				
Facility	ADP		Capacity	
	State Secure		Design	
	Monthly	YTD	Capacity	% of YTD
Adams*	0.1	0.2	-	-
Gilliam*	0.5	0.2	-	-
Grand Mesa	36.7	40.3	40	100.8%
Lookout	133.5	132.8	130	102.2%
Marvin Foote*	0.3	0.3	-	-
Mount View**	65.9	63.4	64	99.0%
Platte Valley	41.5	37.4	39	96.0%
Pueblo*	0.5	0.5	-	-
Spring Creek	33.3	29.9	29	103.1%
Zeb Pike	36.8	36.1	36	100.2%
Assessment Total	27.9	35.8	-	
Secure Total	321.4	305.3	-	
GRAND TOTAL	349.2	341.1	338	100.9%

*Detention only facilities with commitment ADP due to committed youth being held in detention prior to transfer.

**Commitment capacity at Mount View increased from 50 to 64 as of April 1, 2014, with the addition of 14 assessment beds.

CONTRACT: PRIVATE SECURE + STAFF SUPERVISED		
Facility/Program	ADP	
	Monthly	YTD
(Private Secure) Betty K. Marler Center	37.5	40.2
(Private Secure) Robert DeNier	11.2	10.5
Alternative Homes For Youth - Greeley	13.5	13.5
Children's Ark at Pueblo	7.3	7.3
Devereux Cleo Wallace	18.7	24.0
Gateway Residential Program - Delta	1.9	3.3
Hilltop (Residential Youth Services)	5.9	3.1
Jefferson Hills - Aurora	40.2	38.4
Mountain Crest/Poudre Valley Health System	6.4	8.4
Ridge View	164.8	169.8
Robert Brown Center	1.5	3.3
Southern Peaks	6.5	7.7
Third Way Center - Lowry	12.2	11.9
TOTAL	327.5	341.3

**State Secure Commitment
Percent of Design Capacity by Facility**



May 2014 DYC Population Report

III. Commitment Services Continued

B. Community/Other Residential ADP by Facility

COMMUNITY RESIDENTIAL		
	<i>Monthly</i>	<i>YTD</i>
Ariel Clinical Services	0.0	0.8
Community Corrections: Comcor	0.0	0.3
Community Corrections: Mesa County	1.0	2.7
Community Corrections and Work Release	0.7	0.9
Dale House Project	6.7	8.9
Denver Area Youth Services (DAYS)	1.3	0.8
Gateway Residential Program - Grand Junction	1.0	1.0
Griffith Centers (SR)	7.5	6.7
Hilltop (Independent Living)	1.0	0.1
H.U.S.A.C. (Haven Corp.)	1.0	0.1
Job Corps	5.9	4.7
Kids Crossing	0.0	1.2
Mt Evans Qualifying House	6.4	9.9
Savio House	1.0	1.2
Southern Region Independent Foster Home	0.0	0.8
Summit Treatment Service, Inc	7.6	9.5
Synergy Administration	2.0	3.1
Third Way Center, Bannock	5.2	3.0
Third Way Center, Pontiac	7.5	6.3
Third Way Center, York	8.4	9.8
Third Way Center, Lincoln	11.0	10.5
Turning Point Center, Prospect	3.3	3.0
Turning Point, Mathews St.	8.7	5.8
Whimspire Child Placement	1.3	2.8
Youthtrack, San Luis Valley	1.7	3.9
Youthtrack, Work and Learn	9.3	7.8
<i>Community Subtotal</i>	<i>99.7</i>	<i>105.4</i>
<i>Contract/Staff Supervised + Community Total</i>	<i>427.2</i>	<i>446.7</i>
OTHER RESIDENTIAL		
	<i>Monthly</i>	<i>YTD</i>
CMHI-Ft. Logan	0.0	0.1
CMHI-Pueblo	0.0	0.1
Job Corps Parole Program (Federally funded)	2.2	1.4
Other Mental Health Facility	0.0	0.6
Residential Mental Health Program	0.0	1.6
Residential Work Program	0.0	1.6
Shelter Care (short term)	1.6	1.6
<i>Other Residential Total*</i>	<i>6.0</i>	<i>11.0</i>
RESIDENTIAL TOTAL	782.4	798.8

**Due to the relatively few youth referred to these types of placements, Other Residential Totals may not add to the sum of the individual placements due to rounding errors and the method by which ADP is calculated.*

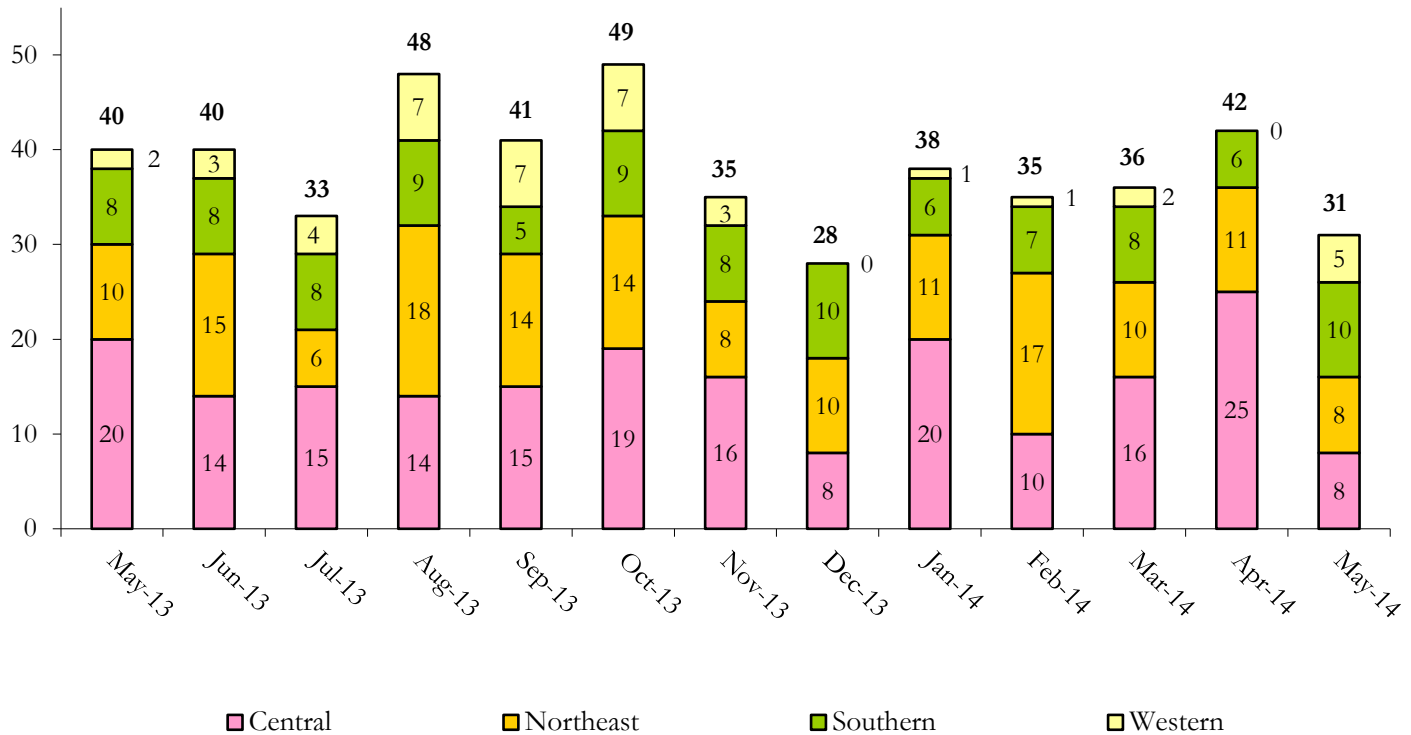
May 2014 DYC Population Report

IV. Commitment ADP and New Commitments

COMMITMENT ADP				
Region	Monthly		YTD	
	May	% Change	May	% Change from Prior FY
Central Region	340.0	-0.5%	343.3	-5.3%
Northeast Region	197.4	-3.8%	204.3	-6.1%
Southern Region	164.0	4.1%	157.3	-9.9%
Western Region	81.0	-3.6%	94.0	-5.6%
Commitment ADP	782.4	-0.8%	798.8	-6.5%

NEW COMMITMENTS					
	FY 13-14		FY 12-13		% Change from last YTD
	May	YTD	May	YTD	
Central Region	8	166	20	185	-10.3%
Northeast Region	8	132	10	116	13.8%
Southern Region	10	92	8	91	1.1%
Western Region	5	39	2	55	-29.1%
TOTAL	31	429	40	447	-4.0%

Monthly New Commitments



May 2014 DYC Population Report

V. Parole Services

PAROLE ADP				
Region	Monthly	YTD		% Change from prev YTD
		FY 13-14	FY 12-13	
Central Region	108.8	115.9	137.1	-15.5%
Northeast Region	74.8	83.4	99.8	-16.5%
Southern Region	42.2	54.7	67.6	-19.0%
Western Region	33.0	29.9	30.9	-3.2%
Total	258.9	284.0	335.4	-15.3%

Region	Parole Intakes		Parole Discharges		LOS
	Monthly	YTD	Monthly	YTD	
Central Region	17	178	13	202	6.7
Northeast Region	8	128	16	155	6.3
Southern Region	6	77	8	101	6.6
Western Region	9	56	7	45	7.8
Total	40	439	44	503	6.7

