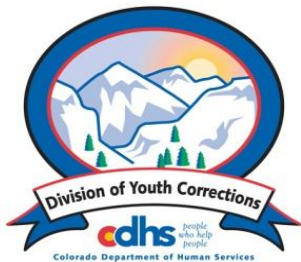


April 2014 MONTHLY POPULATION REPORT FY 2013 - 2014

Prepared by the Division of Youth Corrections
(DYC)
Research and Evaluation Unit
May 29, 2014



Colorado Department of Human Services
Division of Youth Corrections

Working with Colorado Communities to Achieve Justice

April 2014 DYC Population Report

I. Summary Population Data	1
II. Detention ADP by Facility	2
III. Commitment Services	
A. State and Contract ADP by Facility	3
B. Community/Other Residential ADP by Facility	4
IV. Commitment ADP and New Commitments by Region	5
V. Parole Services	6



April 2014 DYC Population Report

I. Summary Population Data*

DETAINED YOUTH

	April 2014		YTD	
	ADP	% change	ADP	LOS
State-Operated	284.8	-4.7%	284.3	15.4 days
Contracted Staff Secure	6.0	27.7%	7.5	20.0 days
Total Detained	290.7	-4.2%	291.8	15.5 days

COMMITTED YOUTH

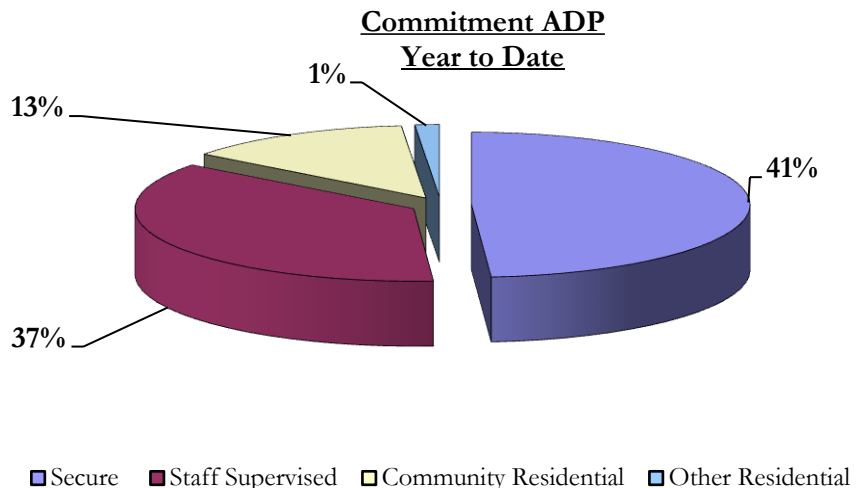
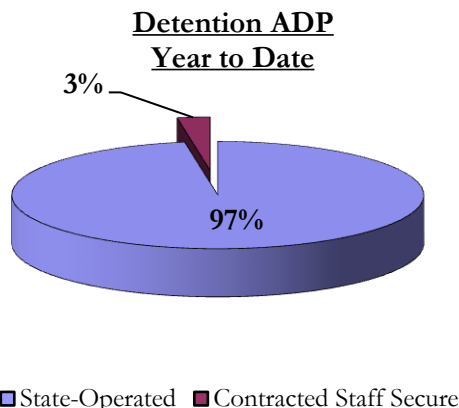
	April 2014		YTD	
	ADP	% change	ADP	LOS
Secure	399.7	13.9%	391.1	9.5 months
Staff Supervised	271.0	-2.3%	291.8	11.1 months
Community Residential	108.7	3.3%	106.0	5.8 months
Other Residential	8.9	15.9%	11.3	2.2 months
Total Committed Residential	788.3	-0.5%	800.3	19.4 months
<i>Committed Residential w/o Boulder</i>	<i>785.3</i>	<i>-0.5%</i>	<i>795.9</i>	-

PAROLE YOUTH

	April 2014		YTD	
	ADP	% change	ADP	LOS
Parole	264.5	-1.8%	287.7	6.7 months

TOTAL STATEWIDE ADP

	April 2014		YTD	
	ADP	% change	ADP	LOS
DETENTION	290.7	-4.2%	291.8	15.5 days
COMMITMENT	788.3	-0.5%	800.3	19.4 months
PAROLE	264.5	-1.8%	287.7	6.7 months
STATE TOTAL	1,343.5	-1.6%	1,379.8	N/A



*Due to rounding, totals may not add to 100%.

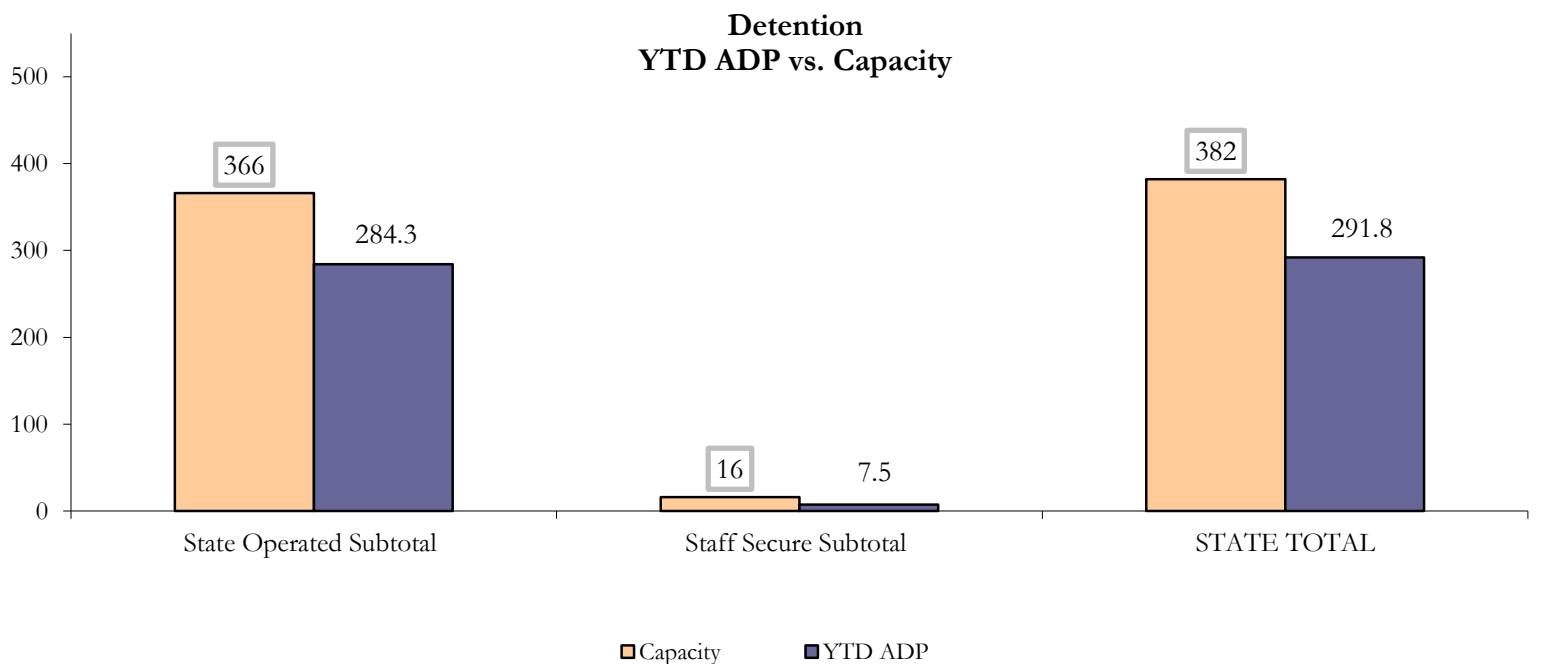
April 2014 DYC Population Report

II. Detention ADP by Facility

State Operated Detention							
Facility	Operating Capacity	Average Daily Population			New Admissions		LOS (days)
		Monthly	YTD	YTD % of Cap	Monthly	YTD	YTD
Adams	30	24.3	22.8	76.2%	49	399	16.5
Gilliam	64	54.2	56.5	88.4%	93	915	18.9
Grand Mesa	27	11.5	15.5	57.3%	24	275	16.0
Marvin Foote	61	48.8	47.0	77.0%	112	1,029	14.9
Mount View	41	24.3	30.0	73.1%	59	625	13.6
Platte Valley	64	56.9	48.2	75.3%	130	1,097	12.9
Pueblo	28	24.7	21.9	78.2%	45	454	13.3
Spring Creek	51	40.0	42.3	83.0%	66	724	17.5
State Subtotal	366	284.8	284.3	77.7%	578	5,518	15.4

Staff Secure Detention							
Facility	Operating Capacity	Average Daily Population			New Admissions		LOS (days)
		Monthly	YTD	YTD % of Cap	Monthly	YTD	YTD
Brown Center	3	1.7	0.9	30.9%	2	20	13.3
Robert DeNier	9	2.6	4.5	49.9%	4	50	28.5
Youthtrack San Luis Valley	4	1.7	2.1	52.4%	4	48	13.2
Staff Secure Subtotal	16	6.0	7.5	47.0%	10	118	20.0

STATEWIDE TOTAL							
	Operating Capacity	Average Daily Population			New Admissions		LOS (days)
		Monthly	YTD	YTD % of Cap	Monthly	YTD	YTD
Total Detention	382	290.7	291.8	76.4%	588	5,636	15.5



April 2014 DYC Population Report

III. Commitment Services

A. State and Contract ADP by Facility

STATE SECURE				
Facility	ADP		Capacity	
	State Secure		Design	
	Monthly	YTD	Capacity	% of YTD
<i>Adams*</i>	0.2	0.2	-	-
<i>Gilliam*</i>	0.1	0.2	-	-
Grand Mesa	34.6	40.7	40	101.7%
Lookout	133.4	132.8	130	102.1%
<i>Marvin Foote*</i>	0.1	0.3	-	-
Mount View**	73.7	63.1	64	98.6%
Platte Valley	40.8	37.0	39	94.9%
<i>Pueblo*</i>	0.7	0.5	-	-
Spring Creek	31.7	29.6	29	101.9%
Zeb Pike	36.4	36.0	36	100.0%
Assessment Total	36.6	36.5	-	
Secure Total	315.1	303.8	-	
GRAND TOTAL	351.7	340.3	338	100.7%

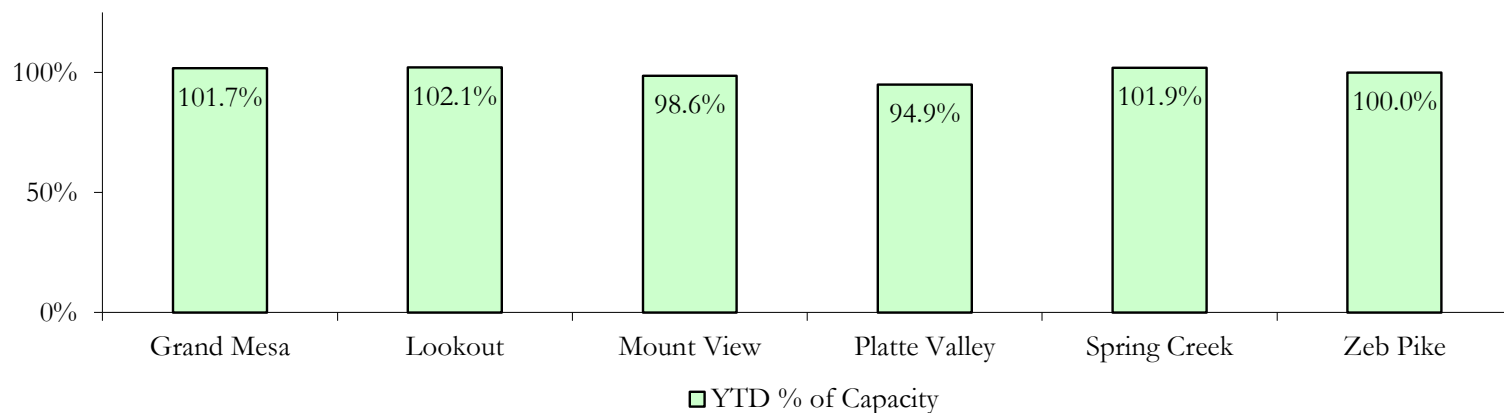
**Detention only facilities with commitment ADP due to committed youth being held in detention prior to transfer.*

***Commitment capacity at Mount View increased from 50 to 64 as of April 1, 2014, with the addition of 14 assessment beds.*

CONTRACT: PRIVATE SECURE + STAFF SUPERVISED

Facility/Program	ADP	
	Monthly	YTD
Betty K. Marler Center	38.0	40.4
Robert DeNier	10.0	10.4
Alternative Homes For Youth - Greeley	13.7	13.4
Brown Center	1.6	3.4
Children's Ark at Pueblo	7.2	7.3
Devereux Cleo Wallace	20.2	24.5
Gateway Residential Program - Delta	1.7	3.4
Hilltop (Residential Youth Services)	4.1	2.8
Jefferson Hills - Aurora	36.9	38.2
Mountain Crest/Poudre Valley Health System	4.6	8.7
Ridge View	164.0	170.3
Southern Peaks	5.0	7.8
Third Way Center - Lowry	12.0	11.9
TOTAL	319.0	342.7

**State Secure Commitment
Percent of Design Capacity by Facility**



April 2014

DYC Population Report

III. Commitment Services Continued

B. Community/Other Residential ADP by Facility

COMMUNITY RESIDENTIAL		
	<i>Monthly</i>	<i>YTD</i>
Ariel Clinical Services	0.0	0.9
Community Corrections: Comcor	0.0	0.3
Community Corrections: Mesa County	1.7	2.8
Community Corrections and Work Release	1.0	0.9
Dale House Project	6.5	9.2
Denver Area Youth Services (DAYS)	1.0	0.8
Gateway Residential Program - Grand Junction	1.0	1.0
Griffith Centers (SR)	6.7	6.6
Hilltop (Independent Living)	0.3	0.0
H.U.S.A.C. (Haven Corp.)	0.2	0.0
Job Corps	6.7	4.6
Kids Crossing	0.0	1.3
Mt Evans Qualifying House	10.5	10.2
Savio House	1.0	1.2
Southern Region Independent Foster Home	1.0	0.9
Summit Treatment Service, Inc	7.9	9.7
Synergy Administration	1.8	3.2
Third Way Center, Bannock	3.8	2.8
Third Way Center, Pontiac	7.9	6.1
Third Way Center, York	10.3	10.0
Third Way Center, Lincoln	10.0	10.4
Turning Point Center, Prospect	3.8	2.9
Turning Point, Mathews St.	9.3	5.6
Whimspire Child Placement	4.0	2.9
Youthtrack, San Luis Valley	2.2	4.1
Youthtrack, Work and Learn	10.0	7.6
<i>Community Subtotal</i>	<i>108.7</i>	<i>106.0</i>

Contract/Staff Supervised + Community Total 427.7 448.6

OTHER RESIDENTIAL		
	<i>Monthly</i>	<i>YTD</i>
CMHI-Ft. Logan	0.0	0.1
CMHI-Pueblo	0.0	0.1
Job Corps Parole Program (Federally funded)	2.0	1.3
Other Mental Health Facility	1.1	0.8
Residential Mental Health Program	0.6	1.7
Residential Work Program	0.3	1.7
Shelter Care (short term)	1.4	1.6
<i>Other Residential Total*</i>	<i>8.9</i>	<i>11.3</i>

RESIDENTIAL TOTAL	788.3	800.3
--------------------------	--------------	--------------

**Due to the relatively few youth referred to these types of placements, Other Residential Totals may not add to the sum of the individual placements due to rounding errors and the method by which ADP is calculated.*

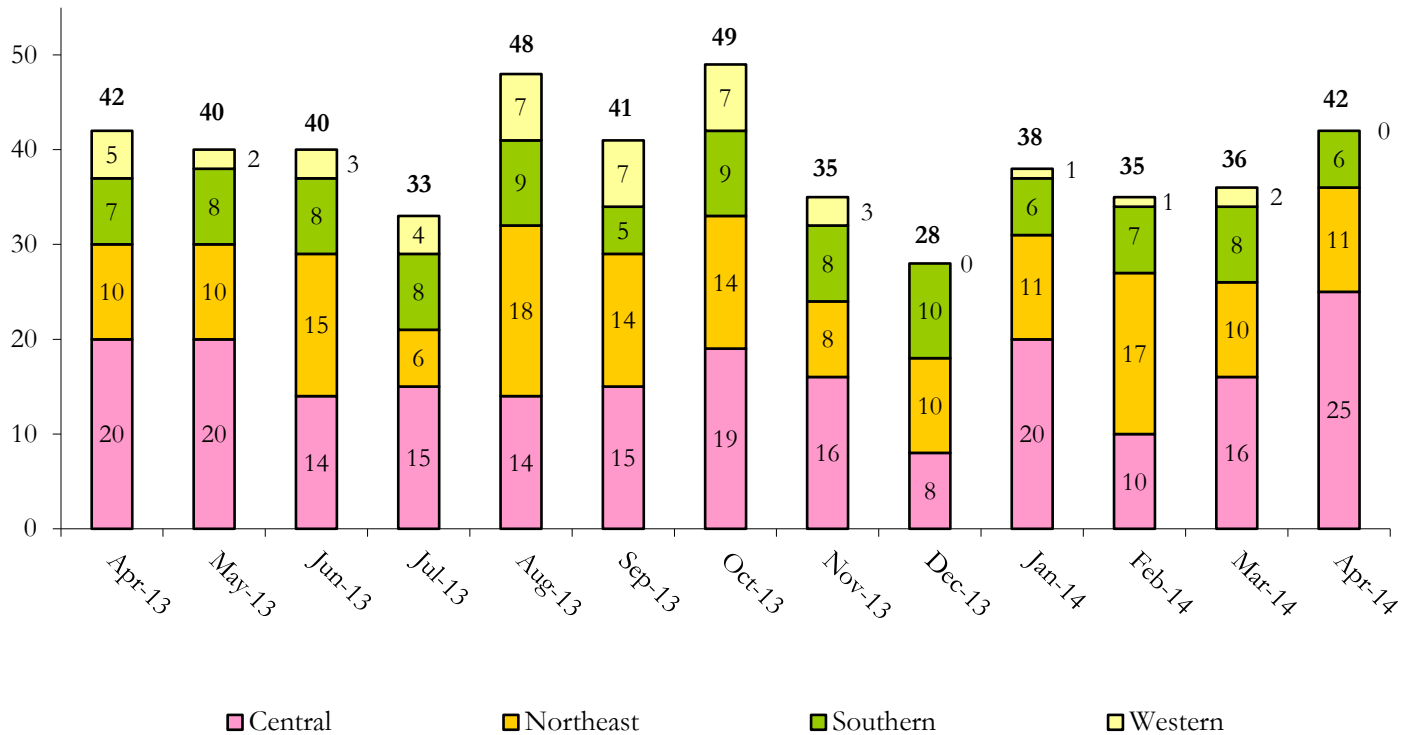
April 2014 DYC Population Report

IV. Commitment ADP and New Commitments

COMMITMENT ADP				
Region	Monthly		YTD	
	April	% Change	April	% Change from Prior FY
Central Region	341.6	1.9%	343.7	-5.5%
Northeast Region	205.2	-3.5%	205.1	-6.1%
Southern Region	157.5	1.5%	156.4	-10.7%
Western Region	84.0	-6.0%	95.0	-4.3%
Commitment ADP	788.3	-0.5%	800.3	-6.6%

NEW COMMITMENTS					
	FY 13-14		FY 12-13		% Change from last YTD
	April	YTD	April	YTD	
Central Region	25	158	20	165	-4.2%
Northeast Region	11	124	10	106	17.0%
Southern Region	6	82	7	83	-1.2%
Western Region	0	34	5	53	-35.8%
TOTAL	42	398	42	407	-2.2%

Monthly New Commitments



April 2014 DYC Population Report

V. Parole Services

PAROLE ADP				
Region	Monthly	YTD		% Change from prev YTD
		FY 13-14	FY 12-13	
Central Region	105.1	116.5	137.8	-15.4%
Northeast Region	80.1	85.1	99.0	-14.1%
Southern Region	45.5	56.5	69.3	-18.4%
Western Region	33.8	29.6	32.0	-7.6%
Total	264.5	287.7	338.1	-14.9%

Region	Parole Intakes		Parole Discharges		LOS
	Monthly	YTD	Monthly	YTD	
Central Region	21	161	22	189	6.7
Northeast Region	9	118	12	138	6.4
Southern Region	4	71	9	92	6.5
Western Region	2	47	5	38	8.2
Total	36	397	48	457	6.7

