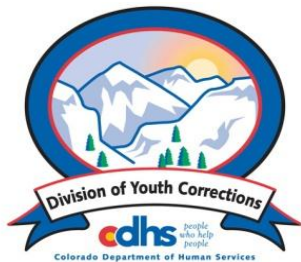


March 2014 MONTHLY POPULATION REPORT FY 2013 - 2014

Prepared by the Division of Youth Corrections
(DYC)
Research and Evaluation Unit
April 28, 2014



Colorado Department of Human Services
Division of Youth Corrections

Working with Colorado Communities to Achieve Justice

March 2014 DYC Population Report

I. Summary Population Data	1
II. Detention ADP by Facility	2
III. Commitment Services	
A. State and Contract ADP by Facility	3
B. Community/Other Residential ADP by Facility	4
IV. Commitment ADP and New Commitments by Region	5
V. Parole Services	6



March 2014 DYC Population Report

I. Summary Population Data*

DETAINED YOUTH

	March 2014		YTD	
	ADP	% change	ADP	LOS
State-Operated	298.8	3.5%	284.3	15.5 days
Contracted Staff Secure	4.7	-33.6%	7.7	20.7 days
Total Detained	303.5	2.6%	292.0	15.6 days

COMMITTED YOUTH

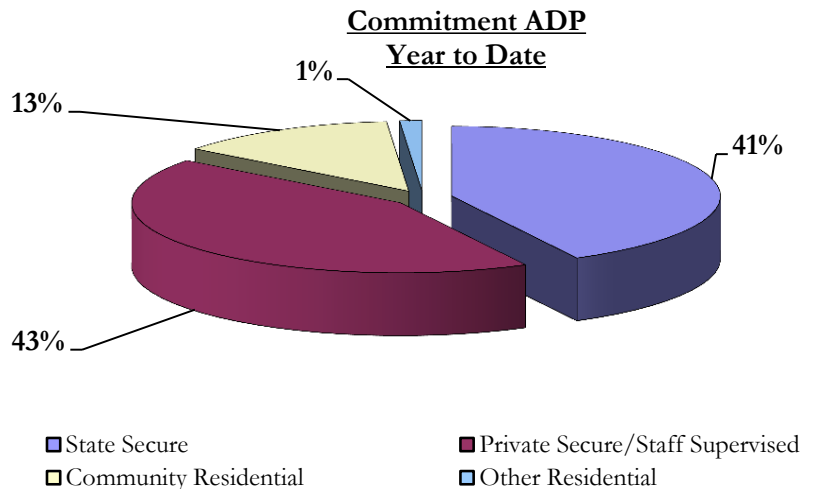
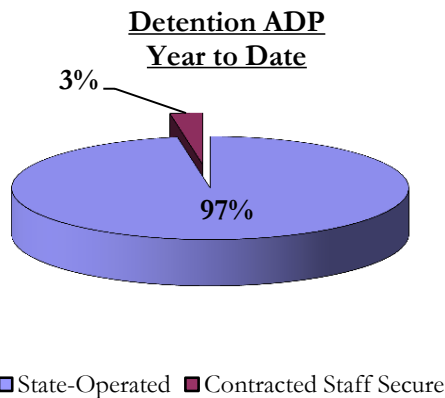
	March 2014		YTD	
	ADP	% change	ADP	LOS
State Secure	350.8	-0.3%	339.3	9.4 months
Private Secure/Staff Supervised	328.6	-0.2%	345.3	7.2 months
Community Residential	105.3	0.5%	106.8	2.4 months
Other Residential	7.7	-21.9%	10.6	5.7 days
Total Committed Residential	792.3	-0.4%	801.9	19.2 months
<i>Committed Residential w/o Boulder</i>	<i>789.3</i>	<i>-0.4%</i>	<i>797.4</i>	<i>-</i>

PAROLE YOUTH

	March 2014		YTD	
	ADP	% change	ADP	LOS
Parole	269.5	-6.8%	288.5	6.6 months

TOTAL STATEWIDE ADP

	March 2014		YTD	
	ADP	% change	ADP	LOS
DETENTION	303.5	2.6%	292.0	15.6 days
COMMITMENT	792.3	-0.4%	801.9	19.2 months
PAROLE	269.5	-6.8%	288.5	6.6 months
STATE TOTAL	1,365.2	-1.1%	1,382.4	N/A



*Due to rounding, totals may not add to 100%.

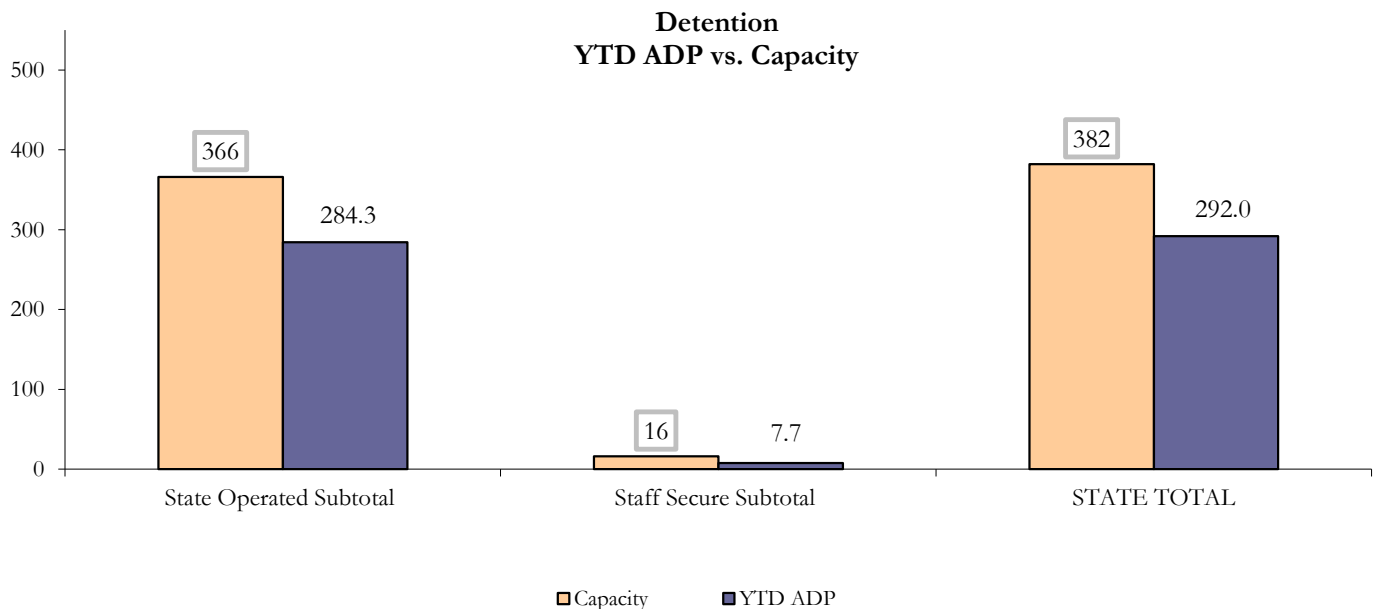
March 2014 DYC Population Report

II. Detention ADP by Facility

State Operated Detention							
Facility	Operating Capacity	Average Daily Population			New Admissions		LOS (days)
		Monthly	YTD	YTD % of Cap	Monthly	YTD	YTD
Adams	30	27.4	22.7	75.6%	40	350	16.7
Gilliam	64	60.6	56.8	88.8%	86	822	19.0
Grand Mesa	27	11.7	15.9	58.9%	20	251	16.3
Marvin Foote	61	53.2	46.8	76.7%	102	917	14.7
Mount View	41	29.1	30.6	74.7%	60	566	13.9
Platte Valley	64	57.0	47.3	73.9%	130	967	13.2
Pueblo	28	21.7	21.6	77.1%	51	410	13.5
Spring Creek	51	38.0	42.6	83.5%	72	659	17.4
State Subtotal	366	298.8	284.3	77.7%	561	4,942	15.5

Staff Secure Detention							
Facility	Operating Capacity	Average Daily Population			New Admissions		LOS (days)
		Monthly	YTD	YTD % of Cap	Monthly	YTD	YTD
Brown Center	3	0.8	0.8	28.3%	2	18	13.2
Robert DeNier	9	2.5	4.7	52.2%	4	46	30.0
Youthtrack San Luis Valley	4	1.4	2.1	53.5%	6	44	13.2
Staff Secure Subtotal	16	4.7	7.7	48.0%	12	108	20.7

STATEWIDE TOTAL							
	Operating Capacity	Average Daily Population			New Admissions		LOS (days)
		Monthly	YTD	YTD % of Cap	Monthly	YTD	YTD
Total Detention	382	303.5	292.0	76.4%	573	5,050	15.6



March 2014 DYC Population Report

III. Commitment Services

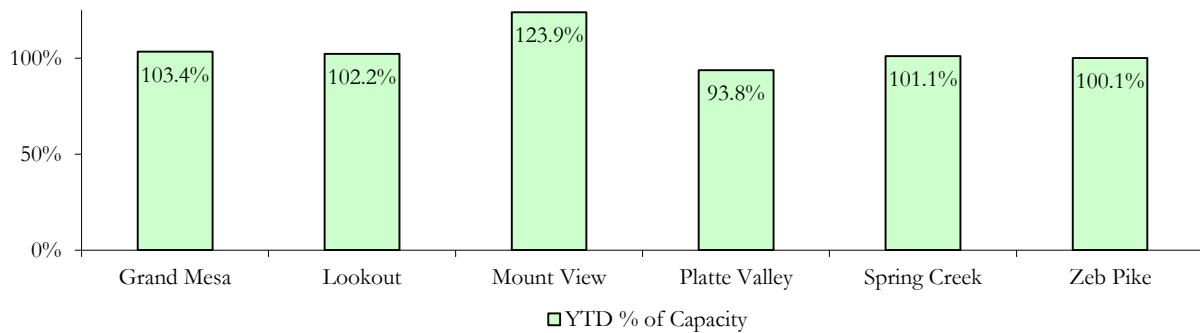
A. State and Contract ADP by Facility

STATE SECURE				
Facility	ADP		Capacity	
	State Secure		Design	
	Monthly	YTD	Capacity	% of YTD
<i>Adams*</i>	0.3	0.2	-	-
<i>Gilliam*</i>	0.4	0.2	-	-
Grand Mesa	38.2	41.4	40	103.4%
Lookout	134.0	132.9	130	102.2%
<i>Marvin Foote*</i>	0.3	0.4	-	-
Mount View	66.3	62.0	50	123.9%
Platte Valley	44.4	36.6	39	93.8%
<i>Pueblo*</i>	0.1	0.5	-	-
Spring Creek	30.0	29.3	29	101.1%
Zeb Pike	36.8	36.0	36	100.1%
Assessment Total	33.5	36.5	-	
Secure Total	317.3	302.8	-	
GRAND TOTAL	350.8	339.3	324	104.7%

**Detention only facilities with commitment ADP due to committed youth being held in detention prior to transfer.*

CONTRACT + STAFF SUPERVISED		
Facility/Program	ADP	
	Monthly	YTD
Alternative Homes For Youth - Greeley	13.9	13.4
Betty K. Marler Center	40.7	40.7
Brown Center	1.8	3.5
Children's Ark at Pueblo	7.2	7.3
Devereux Cleo Wallace	22.1	25.0
Gateway Residential Program - Delta	2.0	3.6
Hilltop (Residential Youth Services)	4.1	2.7
Jefferson Hills - Aurora	39.3	38.3
Mountain Crest/Poudre Valley Health System	6.2	9.1
Ridge View	165.0	171.0
Robert DeNier	10.5	10.4
Southern Peaks	4.6	8.1
Third Way Center - Lowry	11.0	11.9
TOTAL	328.6	345.3

**State Secure Commitment
Percent of Design Capacity by Facility**



March 2014 DYC Population Report

III. Commitment Services Continued

B. Community/Other Residential ADP by Facility

COMMUNITY RESIDENTIAL		
	<i>Monthly</i>	<i>YTD</i>
Ariel Clinical Services	0.0	0.9
Community Corrections: Comcor	0.0	0.4
Community Corrections: Mesa County	2.5	2.9
Community Corrections and Work Release	1.0	0.9
Dale House Project	5.9	9.5
Denver Area Youth Services (DAYS)	1.0	0.7
Gateway Residential Program - Grand Junction	1.0	0.9
Griffith Centers (SR)	7.0	6.6
Job Corps	7.2	4.9
Kids Crossing	0.2	1.4
Mt Evans Qualifying House	10.5	10.2
Savio House	1.6	1.3
Southern Region Independent Foster Home	1.0	0.9
Summit Treatment Service, Inc	8.1	9.9
Synergy Administration	2.0	3.4
Third Way Center	1.5	2.7
Third Way Center, Pontiac	7.1	6.0
Third Way Center, York	11.0	9.9
Third Way Center, Lincoln	10.4	10.5
Turning Point Center, Prospect	3.6	2.8
Turning Point, Mathews St.	7.4	5.1
Whimspire Child Placement	4.0	3.3
Youthtrack, San Luis Valley	3.0	4.3
Youthtrack, Work and Learn	8.4	7.4
<i>Community Subtotal</i>	<i>105.3</i>	<i>106.8</i>
<i>Contract/Staff Supervised + Community Total</i>	<i>433.8</i>	<i>452.0</i>
OTHER RESIDENTIAL		
	<i>Monthly</i>	<i>YTD</i>
CMHI-Ft. Logan	0.0	0.1
CMHI-Pueblo	0.0	0.1
Job Corps Parole Program (Federally funded)	1.0	0.7
Other Mental Health Facility	1.0	0.7
Residential Mental Health Program	1.6	1.8
Residential Work Program	1.0	2.1
Shelter Care (short term)	1.4	1.1
<i>Other Residential Total*</i>	<i>7.7</i>	<i>10.6</i>
RESIDENTIAL TOTAL	792.3	801.9

**Due to the relatively few youth referred to these types of placements, Other Residential Totals may not add to the sum of the individual placements due to rounding errors and the method by which ADP is calculated.*

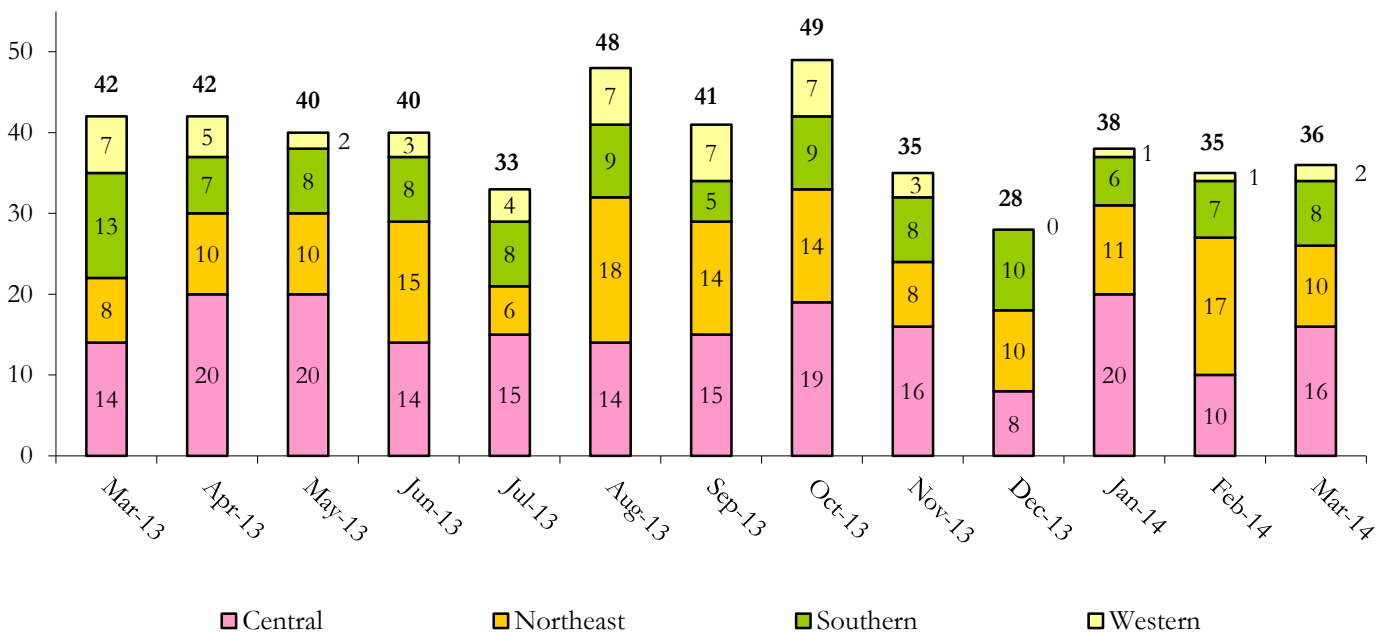
March 2014 DYC Population Report

IV. Commitment ADP and New Commitments

COMMITMENT ADP				
Region	Monthly		YTD	
	March	% Change	March	% Change from Prior FY
<i>Central Region</i>	335.3	-1.2%	342.1	-6.4%
<i>Northeast Region</i>	212.5	5.2%	205.7	-5.5%
<i>Southern Region</i>	155.1	-3.1%	156.3	-11.8%
<i>Western Region</i>	89.4	-5.1%	97.8	-1.5%
Commitment ADP Total	792.3	-0.4%	801.9	-6.7%

NEW COMMITMENTS					
	FY 13-14		FY 12-13		% Change from last YTD
	March	YTD	March	YTD	
<i>Central Region</i>	16	133	14	146	-8.9%
<i>Northeast Region</i>	10	113	8	95	18.9%
<i>Southern Region</i>	8	75	13	76	-1.3%
<i>Western Region</i>	2	34	7	48	-29.2%
TOTAL	36	355	42	365	-2.7%

Monthly New Commitments



March 2014 DYC Population Report

V. Parole Services

PAROLE ADP				
Region	Monthly	YTD		% Change fm prev YTD
		FY 13-14	FY 12-13	
<i>Central Region</i>	105.8	116.8	138.6	-15.7%
<i>Northeast Region</i>	79.8	85.4	102.2	-16.4%
<i>Southern Region</i>	47.4	57.2	70.6	-19.0%
<i>Western Region</i>	36.4	29.1	33.4	-12.8%
Total	269.5	288.5	344.8	-16.3%

Parole Intakes			Parole Discharges		
By Region	Monthly	YTD	Monthly	YTD	LOS
<i>Central Region</i>	8	140	16	167	6.6
<i>Northeast Region</i>	11	108	14	126	6.5
<i>Southern Region</i>	8	67	9	84	6.4
<i>Western Region</i>	4	45	5	34	7.5
Total	31	360	44	411	6.6

