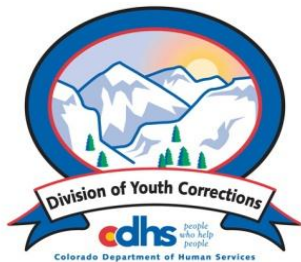


# February 2014 MONTHLY POPULATION REPORT FY 2013 - 2014

---

Prepared by the Division of Youth Corrections  
(DYC)  
Research and Evaluation Unit  
March 24, 2014



Colorado Department of Human Services  
Division of Youth Corrections

---

Working with Colorado Communities to Achieve Justice

# February 2014 DYC Population Report

<b>I. Summary Population Data</b>	<b>1</b>
<b>II. Detention ADP by Facility</b>	<b>2</b>
<b>III. Commitment Services</b>	
A. State and Contract ADP by Facility	3
B. Community/Other Residential ADP by Facility	4
<b>IV. Commitment ADP and New Commitments by Region</b>	<b>5</b>
<b>V. Parole Services</b>	<b>6</b>



# February 2014 DYC Population Report

## I. Summary Population Data\*

### DETAINED YOUTH

	February 2014		YTD	
	ADP	% change	ADP	LOS
State-Operated	288.8	6.6%	283.2	15.7 days
Contracted Staff Secure	7.0	19.7%	8.1	20.8 days
<b>Total Detained</b>	<b>295.8</b>	<b>6.9%</b>	<b>291.3</b>	<b>15.8 days</b>

### COMMITTED YOUTH

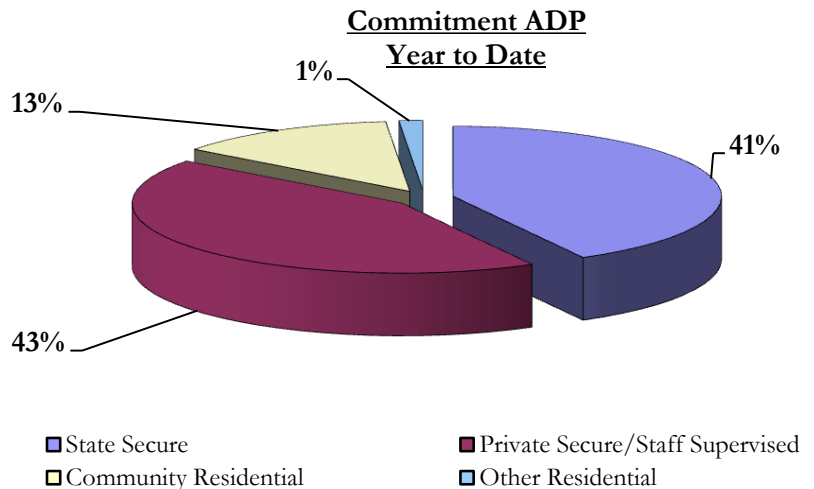
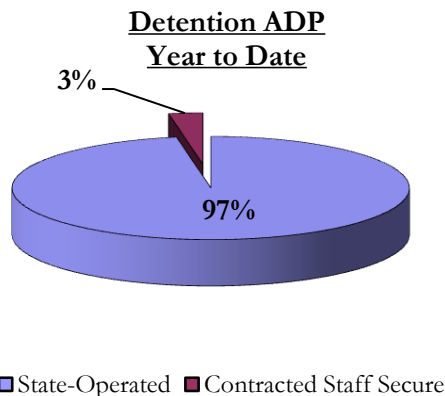
	February 2014		YTD	
	ADP	% change	ADP	LOS
State Secure	351.9	3.6%	337.8	9.4 months
Private Secure/Staff Supervised	329.4	-3.7%	348.0	7.4 months
Community Residential	104.7	7.6%	107.1	2.3 months
Other Residential	9.8	31.2%	11.5	6.2 days
<b>Total Committed Residential</b>	<b>795.7</b>	<b>1.2%</b>	<b>804.4</b>	<b>19.3 months</b>
<i>Committed Residential w/o Boulder</i>	<i>792.7</i>	<i>1.2%</i>	<i>799.7</i>	<i>-</i>

### PAROLE YOUTH

	February 2014		YTD	
	ADP	% change	ADP	LOS
Parole	289.0	-0.3%	288.8	6.6 months

### TOTAL STATEWIDE ADP

	February 2014		YTD	
	ADP	% change	ADP	LOS
DETENTION	295.8	6.9%	291.3	15.8 days
COMMITMENT	795.7	1.2%	804.4	19.3 months
PAROLE	289.0	-0.3%	288.8	6.6 months
<b>STATE TOTAL</b>	<b>1,380.6</b>	<b>2.0%</b>	<b>1,384.4</b>	<b>N/A</b>



\*Due to rounding, totals may not add to 100%.

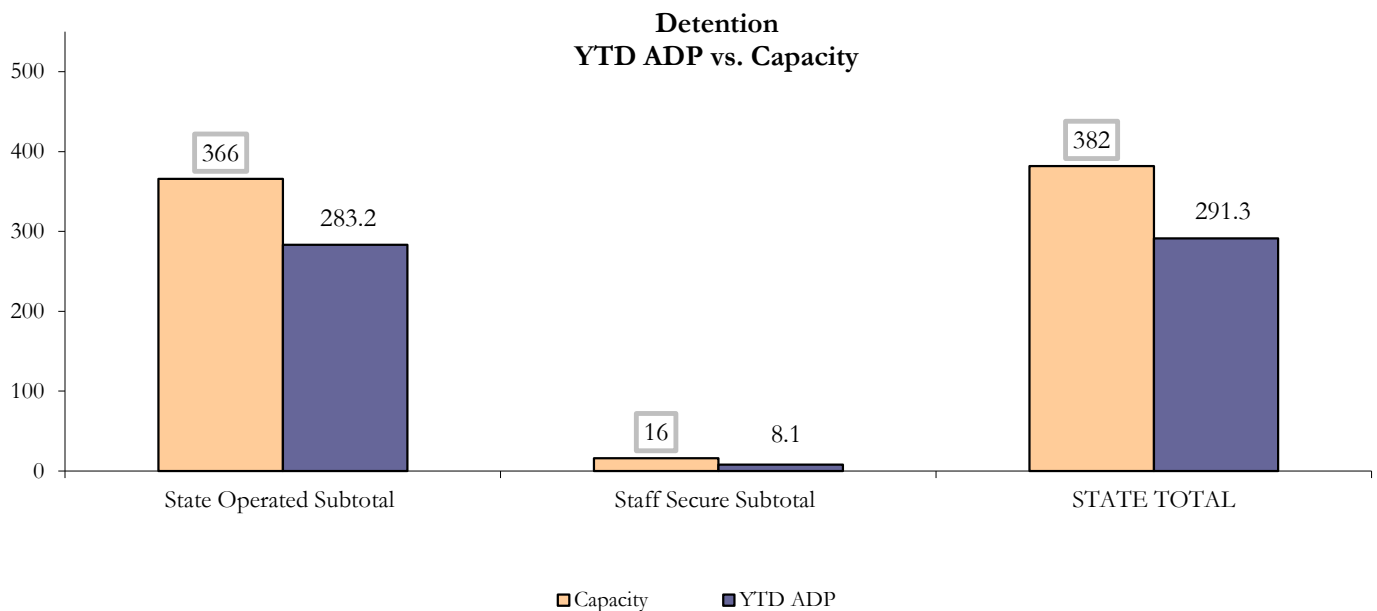
# February 2014 DYC Population Report

## II. Detention ADP by Facility

State Operated Detention							
Facility	Operating Capacity	Average Daily Population			New Admissions		LOS (days)
		Monthly	YTD	YTD % of Cap	Monthly	YTD	YTD
Adams	30	23.6	22.1	73.6%	42	310	16.9
Gilliam	64	56.5	56.3	88.0%	93	736	19.3
Grand Mesa	27	15.6	16.5	60.9%	25	231	15.7
Marvin Foote	61	52.0	46.0	75.4%	91	815	14.7
Mount View	41	33.2	30.8	75.1%	63	506	13.8
Platte Valley	64	48.1	46.8	73.1%	111	840	13.4
Pueblo	28	18.8	21.6	77.0%	43	359	14.1
Spring Creek	51	41.0	43.2	84.7%	69	587	17.7
<b>State Subtotal</b>	<b>366</b>	<b>288.8</b>	<b>283.2</b>	<b>77.4%</b>	<b>537</b>	<b>4,384</b>	<b>15.7</b>

Staff Secure Detention							
Facility	Operating Capacity	Average Daily Population			New Admissions		LOS (days)
		Monthly	YTD	YTD % of Cap	Monthly	YTD	YTD
Brown Center	3	0.3	0.9	28.4%	3	16	14.6
Robert DeNier	9	4.5	5.0	55.4%	5	42	28.3
Youthtrack San Luis Valley	4	2.2	2.2	55.8%	7	38	14.6
<b>Staff Secure Subtotal</b>	<b>16</b>	<b>7.0</b>	<b>8.1</b>	<b>50.4%</b>	<b>15</b>	<b>96</b>	<b>20.8</b>

STATEWIDE TOTAL							
	Operating Capacity	Average Daily Population			New Admissions		LOS (days)
		Monthly	YTD	YTD % of Cap	Monthly	YTD	YTD
<b>Total Detention</b>	<b>382</b>	<b>295.8</b>	<b>291.3</b>	<b>76.2%</b>	<b>552</b>	<b>4,480</b>	<b>15.8</b>



# February 2014 DYC Population Report

## III. Commitment Services

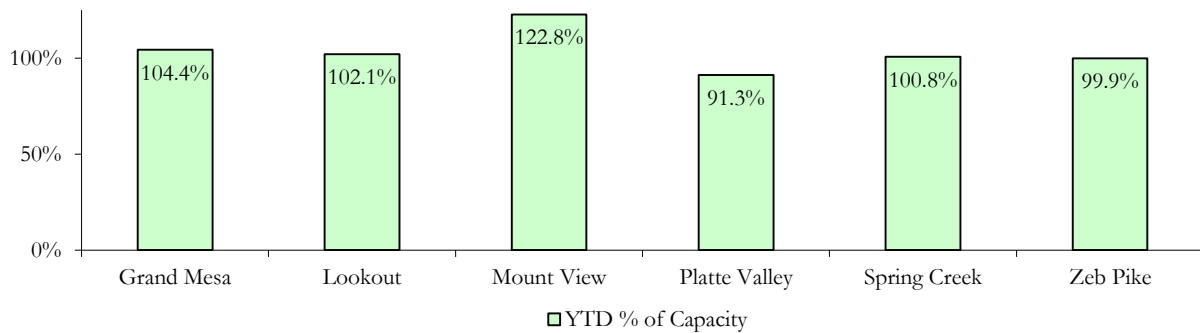
### A. State and Contract ADP by Facility

STATE SECURE				
Facility	ADP		Capacity	
	State Secure		Design	
	Monthly	YTD	Capacity	% of YTD
<i>Adams*</i>	0.3	0.2	-	-
<i>Gilliam*</i>	0.3	0.2	-	-
Grand Mesa	42.0	41.8	40	104.4%
Lookout	133.7	132.7	130	102.1%
<i>Marvin Foote*</i>	0.4	0.4	-	-
Mount View	67.7	61.4	50	122.8%
Platte Valley	40.7	35.6	39	91.3%
<i>Pueblo*</i>	0.2	0.5	-	-
Spring Creek	29.8	29.2	29	100.8%
Zeb Pike	37.0	35.9	36	99.9%
<b>Assessment Total</b>	<b>34.3</b>	<b>36.9</b>	-	
<b>Secure Total</b>	<b>317.5</b>	<b>301.0</b>	-	
<b>GRAND TOTAL</b>	<b>351.9</b>	<b>337.8</b>	<b>324</b>	<b>104.3%</b>

*\*Detention only facilities with commitment ADP due to committed youth being held in detention prior to transfer.*

CONTRACT + STAFF SUPERVISED		
Facility/Program	ADP	
	Monthly	YTD
Alternative Homes For Youth - Greeley	13.7	13.4
Betty K. Marler Center	41.0	40.7
Brown Center	2.8	3.8
Children's Ark at Pueblo	6.8	7.3
Devereux Cleo Wallace	25.1	25.4
Gateway Residential Program - Delta	3.0	4.5
Hilltop (Residential Youth Services)	3.0	2.6
Jefferson Hills - Aurora	37.7	38.2
Mountain Crest/Poudre Valley Health System	7.1	9.5
Ridge View	162.9	171.8
Robert DeNier	10.4	10.4
Southern Peaks	4.7	8.5
Third Way Center - Lowry	11.3	12.0
<b>TOTAL</b>	<b>329.4</b>	<b>348.0</b>

**State Secure Commitment  
Percent of Design Capacity by Facility**



# February 2014 DYC Population Report

## III. Commitment Services Continued

### B. Community/Other Residential ADP by Facility

<b>COMMUNITY RESIDENTIAL</b>		
	<i>Monthly</i>	<i>YTD</i>
Ariel Clinical Services	0.0	1.1
Community Corrections: Comcor	0.0	0.4
Community Corrections: Mesa County	1.4	3.0
Community Corrections and Work Release	1.0	0.8
Dale House Project	9.2	10.0
Denver Area Youth Services (DAYS)	1.0	0.7
Gateway Residential Program - Grand Junction	1.0	0.9
Griffith Centers (SR)	6.9	6.6
Job Corps	6.6	4.7
Kids Crossing	1.0	1.6
Mt Evans Qualifying House	9.9	10.2
Savio House	1.0	1.2
Southern Region Independent Foster Home	1.0	0.9
Summit Treatment Service, Inc	9.7	10.1
Synergy Administration	2.0	3.6
Third Way Center	1.5	2.8
Third Way Center, Pontiac	6.4	5.8
Third Way Center, York	10.5	9.8
Third Way Center, Lincoln	10.0	10.5
Turning Point Center, Prospect	3.0	2.7
Turning Point, Mathews St.	5.4	4.9
Whimspire Child Placement	4.0	3.3
Youthtrack, San Luis Valley	4.8	4.5
Youthtrack, Work and Learn	7.3	7.2
<i>Community Subtotal</i>	<i>104.7</i>	<i>107.1</i>
<b><i>Contract/Staff Supervised + Community Total</i></b>	<b><i>434.1</i></b>	<b><i>455.1</i></b>

<b>OTHER RESIDENTIAL</b>		
	<i>Monthly</i>	<i>YTD</i>
CMHI-Ft. Logan	0.0	0.1
CMHI-Pueblo	0.0	0.2
Job Corps Parole Program (Federally funded)	1.0	0.6
Other Mental Health Facility	0.0	0.7
Residential Mental Health Program	2.0	1.9
Residential Work Program	1.0	2.2
Shelter Care (short term)	1.8	1.1
<i>Other Residential Total*</i>	<i>9.8</i>	<i>11.5</i>

<b>RESIDENTIAL TOTAL</b>		
	<b>795.7</b>	<b>804.4</b>

*\*Due to the relatively few youth referred to these types of placements, Other Residential Totals may not add to the sum of the individual placements due to rounding errors and the method by which ADP is calculated.*

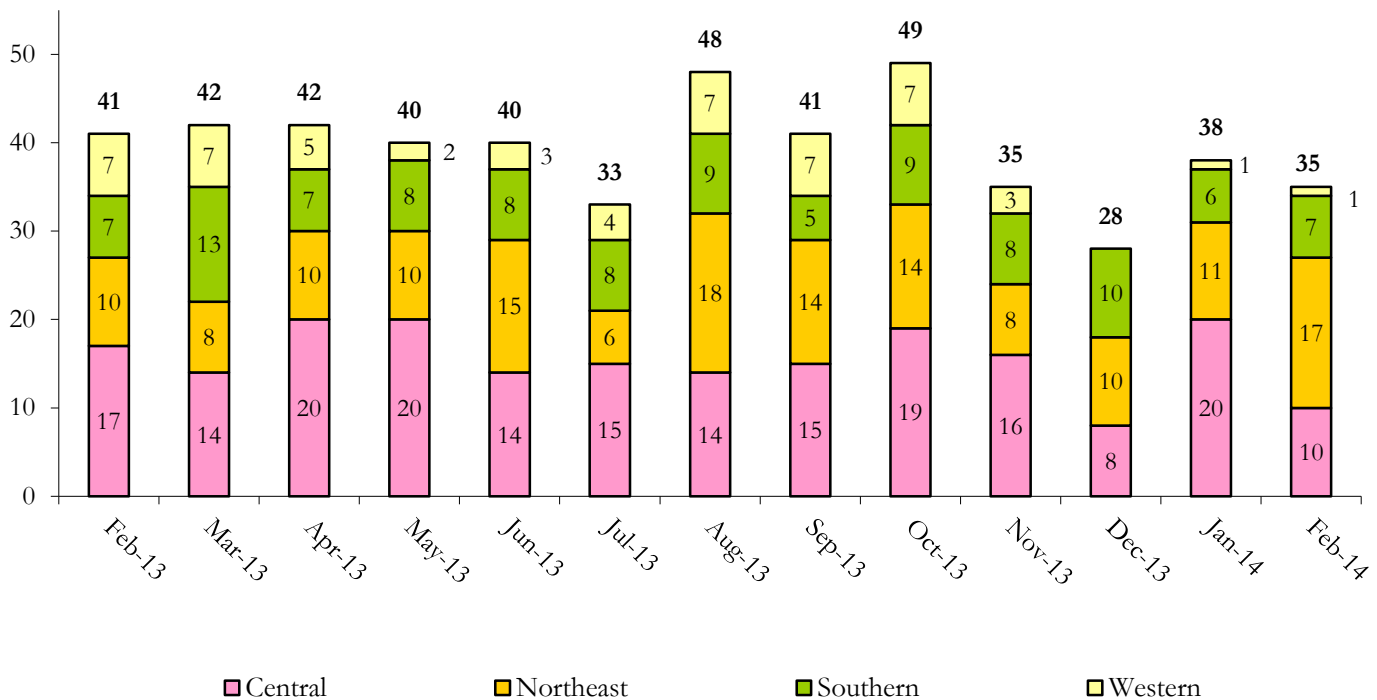
# February 2014 DYC Population Report

## IV. Commitment ADP and New Commitments

COMMITMENT ADP				
Region	Monthly		YTD	
	February	% Change	February	% Change from Prior FY
<i>Central Region</i>	339.4	0.9%	341.0	-6.8%
<i>Northeast Region</i>	202.0	3.6%	204.3	-7.7%
<i>Southern Region</i>	160.1	1.0%	159.1	-9.9%
<i>Western Region</i>	94.2	-2.3%	100.0	0.8%
<b>Commitment ADP Total</b>	<b>795.7</b>	<b>1.2%</b>	<b>804.4</b>	<b>-6.8%</b>

NEW COMMITMENTS					
	FY 13-14		FY 12-13		% Change from last YTD
	February	YTD	February	YTD	
<i>Central Region</i>	10	117	17	130	-10.0%
<i>Northeast Region</i>	17	103	10	87	18.4%
<i>Southern Region</i>	7	66	7	63	4.8%
<i>Western Region</i>	1	31	7	42	-26.2%
<b>TOTAL</b>	<b>35</b>	<b>317</b>	<b>41</b>	<b>322</b>	<b>-1.6%</b>

### Monthly New Commitments



# February 2014 DYC Population Report

## V. Parole Services

PAROLE ADP				
Region	Monthly	YTD		% Change fm prev YTD
		FY 13-14	FY 12-13	
<i>Central Region</i>	113.3	118.0	139.5	-15.4%
<i>Northeast Region</i>	88.4	84.0	104.0	-19.2%
<i>Southern Region</i>	50.8	59.0	71.8	-17.8%
<i>Western Region</i>	36.6	27.7	33.8	-18.1%
<b>Total</b>	<b>289.0</b>	<b>288.8</b>	<b>349.1</b>	<b>-17.3%</b>

Parole Intakes			Parole Discharges		
By Region	Monthly	YTD	Monthly	YTD	LOS
<i>Central Region</i>	10	131	18	150	6.7
<i>Northeast Region</i>	5	97	10	108	6.4
<i>Southern Region</i>	5	60	6	75	6.3
<i>Western Region</i>	5	41	6	29	7.8
<b>Total</b>	<b>25</b>	<b>329</b>	<b>40</b>	<b>362</b>	<b>6.6</b>

