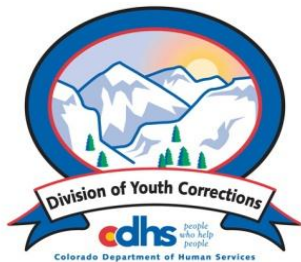


January 2014 MONTHLY POPULATION REPORT FY 2013 - 2014

Prepared by the Division of Youth Corrections
(DYC)
Research and Evaluation Unit
February 25, 2014



Colorado Department of Human Services
Division of Youth Corrections

Working with Colorado Communities to Achieve Justice

January 2014 DYC Population Report

I. Summary Population Data	1
II. Detention ADP by Facility	2
III. Commitment Services	
A. State and Contract ADP by Facility	3
B. Community/Other Residential ADP by Facility	4
IV. Commitment ADP and New Commitments by Region	5
V. Parole Services	6



January 2014 DYC Population Report

I. Summary Population Data*

DETAINED YOUTH

	January 2014		YTD	
	ADP	% change	ADP	LOS
State-Operated	270.9	1.3%	283.6	15.3 days
Contracted Staff Secure	5.9	-32.6%	8.2	22.0 days
Total Detained	276.8	0.2%	291.8	15.4 days

COMMITTED YOUTH

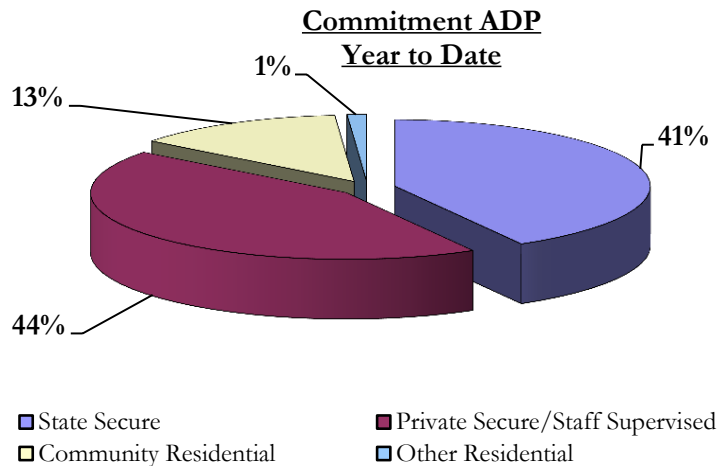
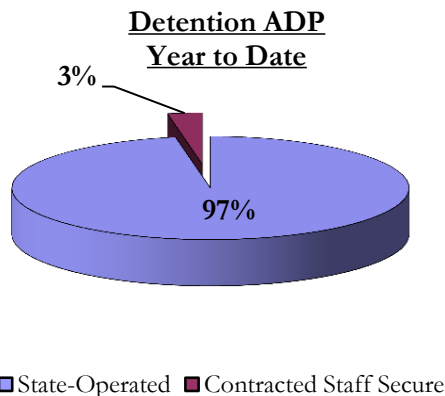
	January 2014		YTD	
	ADP	% change	ADP	LOS
State Secure	339.6	-3.1%	336.0	9.5 months
Private Secure/Staff Supervised	342.0	-1.7%	351.2	7.3 months
Community Residential	97.3	-4.3%	107.5	2.3 months
Other Residential	7.5	-19.9%	9.7	6.6 days
Total Committed Residential	786.4	-2.8%	804.4	19.2 months
<i>Committed Residential w/o Boulder</i>	<i>783.4</i>	<i>-2.7%</i>	<i>799.4</i>	<i>-</i>

PAROLE YOUTH

	January 2014		YTD	
	ADP	% change	ADP	LOS
Parole	290.0	1.3%	288.0	6.6 months

TOTAL STATEWIDE ADP

	January 2014		YTD	
	ADP	% change	ADP	LOS
DETENTION	276.8	0.2%	291.8	15.4 days
COMMITMENT	786.4	-2.8%	804.4	19.2 months
PAROLE	290.0	1.3%	288.0	6.6 months
STATE TOTAL	1,353.2	-1.4%	1,384.1	N/A



*Due to rounding, totals may not add to 100%.

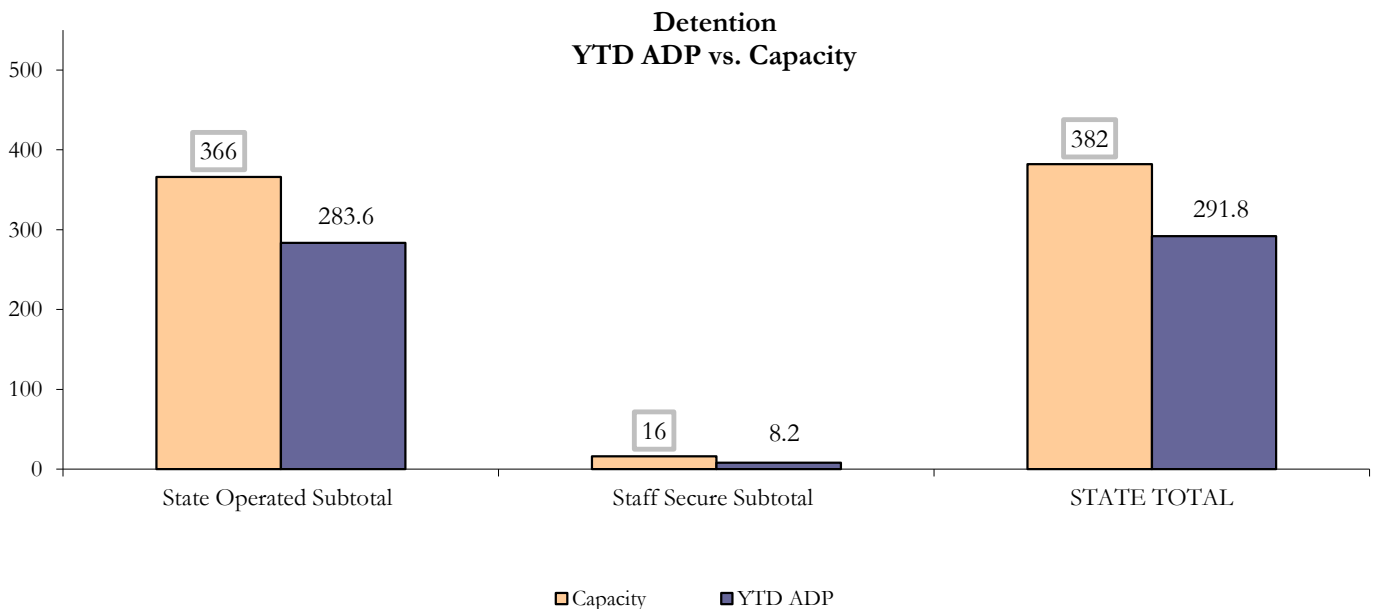
January 2014 DYC Population Report

II. Detention ADP by Facility

State Operated Detention							
Facility	Operating Capacity	Average Daily Population			New Admissions		LOS (days)
		Monthly	YTD	YTD % of Cap	Monthly	YTD	YTD
Adams	30	18.4	21.9	73.0%	30	268	17.5
Gilliam	64	58.8	56.3	87.9%	90	643	19.0
Grand Mesa	27	13.5	16.6	61.4%	40	206	15.6
Marvin Foote	61	48.4	45.2	74.1%	106	724	13.6
Mount View	41	28.3	30.5	74.4%	68	443	13.6
Platte Valley	64	44.4	47.8	74.6%	92	732	13.2
Pueblo	28	20.8	21.9	78.4%	44	316	13.6
Spring Creek	51	38.4	43.5	85.2%	61	518	16.9
State Subtotal	366	270.9	283.6	77.5%	531	3,850	15.3

Staff Secure Detention							
Facility	Operating Capacity	Average Daily Population			New Admissions		LOS (days)
		Monthly	YTD	YTD % of Cap	Monthly	YTD	YTD
Brown Center	3	0.2	0.9	30.8%	2	13	16.0
Robert DeNier	9	2.9	5.0	56.1%	4	37	29.4
Youthtrack San Luis Valley	4	2.7	2.2	55.8%	3	31	15.5
Staff Secure Subtotal	16	5.9	8.2	51.3%	9	81	22.0

STATEWIDE TOTAL							
	Operating Capacity	Average Daily Population			New Admissions		LOS (days)
		Monthly	YTD	YTD % of Cap	Monthly	YTD	YTD
Total Detention	382	276.8	291.8	76.4%	540	3,931	15.4



January 2014 DYC Population Report

III. Commitment Services

A. State and Contract ADP by Facility

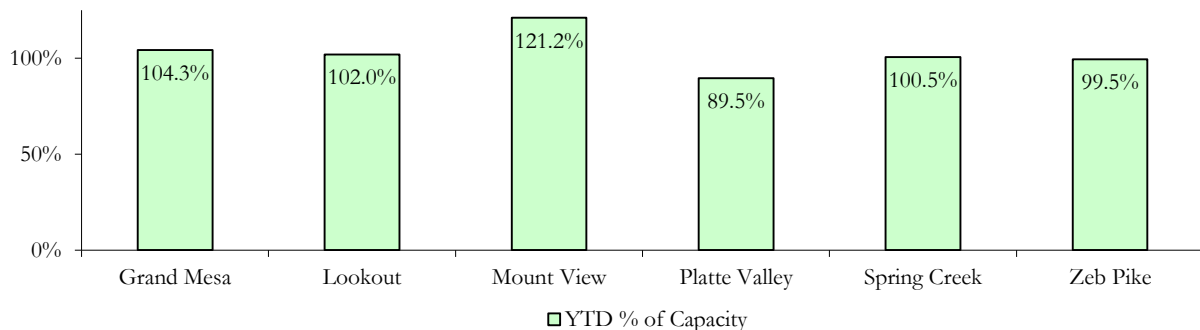
STATE SECURE				
Facility	ADP		Capacity	
	State Secure		Design	
	Monthly	YTD	Capacity	% of YTD
<i>Adams*</i>	0.2	0.1	-	-
<i>Gilliam*</i>	0.1	0.2	-	-
Grand Mesa	42.6	41.7	40	104.3%
Lookout	133.7	132.6	130	102.0%
<i>Marvin Foote*</i>	0.3	0.4	-	-
Mount View	56.5	60.6	50	121.2%
Platte Valley	38.2	34.9	39	89.5%
<i>Pueblo*</i>	0.3	0.5	-	-
Spring Creek	30.6	29.2	29	100.5%
Zeb Pike	37.0	35.8	36	99.5%
Assessment Total	25.1	37.2	-	
Secure Total	314.5	298.8	-	
GRAND TOTAL	339.6	336.0	324	103.7%

**Detention only facilities with commitment ADP due to committed youth being held in detention prior to transfer.*

CONTRACT + STAFF SUPERVISED

Facility/Program	ADP	
	Monthly	YTD
Alternative Homes For Youth - Greeley	14.1	13.3
Betty K. Marler Center	40.9	40.7
Brown Center	3.0	3.9
Children's Ark at Pueblo	7.3	7.4
Devereux Cleo Wallace	27.7	25.4
Gateway Residential Program - Delta	3.7	5.2
Hilltop (Residential Youth Services)	3.3	2.5
Jefferson Hills - Aurora	39.4	38.3
Mountain Crest/Poudre Valley Health System	8.0	9.8
Ridge View	166.4	173.1
Robert DeNier	10.9	10.4
Southern Peaks	5.7	9.0
Third Way Center - Lowry	11.5	12.1
TOTAL	342.0	351.2

**State Secure Commitment
Percent of Design Capacity by Facility**



January 2014 DYC Population Report

III. Commitment Services Continued

B. Community/Other Residential ADP by Facility

COMMUNITY RESIDENTIAL		
	<i>Monthly</i>	<i>YTD</i>
Ariel Clinical Services	0.4	1.4
Community Corrections: Comcor	0.0	0.5
Community Corrections: Mesa County	0.5	3.2
Community Corrections and Work Release	0.0	0.7
Dale House Project	9.0	10.1
Denver Area Youth Services (DAYS)	0.6	0.7
Gateway Residential Program - Grand Junction	1.0	0.9
Griffith Centers (SR)	6.0	6.5
Job Corps	6.1	4.4
Kids Crossing	1.0	1.7
Mt Evans Qualifying House	9.2	10.2
Savio House	1.0	1.2
Southern Region Independent Foster Home	1.0	0.8
Summit Treatment Service, Inc	10.3	10.1
Synergy Administration	1.8	3.8
Third Way Center	2.0	3.0
Third Way Center, Pontiac	5.8	5.7
Third Way Center, York	9.6	9.7
Third Way Center, Lincoln	9.5	10.5
Turning Point Center, Prospect	2.8	2.7
Turning Point, Mathews St.	3.7	4.8
Whimspire Child Placement	4.2	3.2
Youthtrack, San Luis Valley	5.0	4.5
Youthtrack, Work and Learn	6.9	7.2
<i>Community Subtotal</i>	<i>97.3</i>	<i>107.5</i>
<i>Contract/Staff Supervised + Community Total</i>	<i>439.3</i>	<i>458.7</i>

OTHER RESIDENTIAL		
	<i>Monthly</i>	<i>YTD</i>
CMHI-Ft. Logan	0.2	0.1
CMHI-Pueblo	0.0	0.2
Job Corps Parole Program (Federally funded)	1.2	0.6
Other Mental Health Facility	0.8	0.8
Residential Mental Health Program	1.0	1.8
Residential Work Program	1.0	2.4
Shelter Care (short term)	1.3	1.0
<i>Other Residential Total*</i>	<i>7.5</i>	<i>9.7</i>

RESIDENTIAL TOTAL	786.4	804.4
--------------------------	--------------	--------------

**Due to the relatively few youth referred to these types of placements, Other Residential Totals may not add to the sum of the individual placements due to rounding errors and the method by which ADP is calculated.*

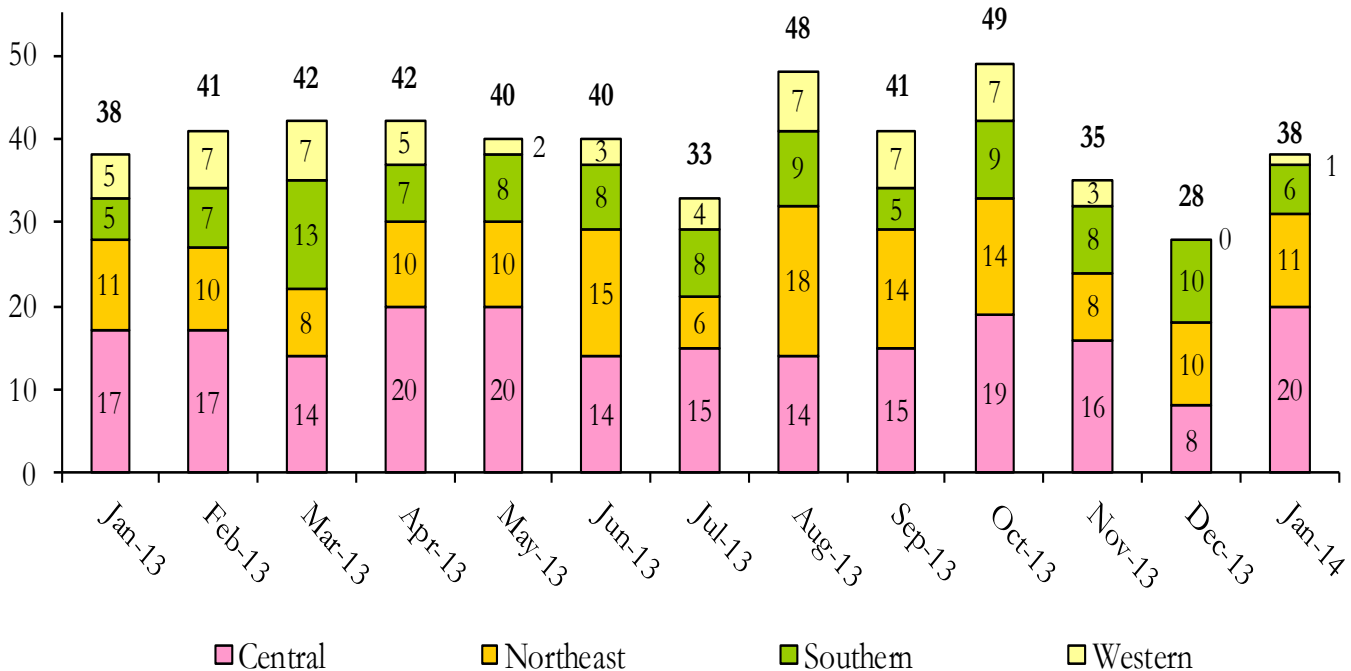
January 2014 DYC Population Report

IV. Commitment ADP and New Commitments

COMMITMENT ADP			
Region	Monthly		YTD
	January	% Change	
<i>Central Region</i>	336.4	-3.5%	341.0
<i>Northeast Region</i>	195.0	-2.7%	203.2
<i>Southern Region</i>	158.5	-2.3%	158.9
<i>Western Region</i>	96.4	-1.4%	101.3
Commitment ADP Total	786.4	-2.8%	804.4

NEW COMMITMENTS					
	FY 13-14		FY 12-13		% Change from last YTD
	January	YTD	January	YTD	
<i>Central Region</i>	20	107	17	113	-5.3%
<i>Northeast Region</i>	11	85	11	76	11.8%
<i>Southern Region</i>	6	59	5	56	5.4%
<i>Western Region</i>	1	30	5	35	-14.3%
TOTAL	38	281	38	280	0.4%

Monthly New Commitments



January 2014 DYC Population Report

V. Parole Services

PAROLE ADP				
Region	Monthly	YTD		% Change fm prev YTD
		FY 13-14	FY 12-13	
<i>Central Region</i>	114.7	118.6	143.4	-17.3%
<i>Northeast Region</i>	88.7	83.5	105.4	-20.8%
<i>Southern Region</i>	51.9	59.5	72.5	-18.0%
<i>Western Region</i>	34.7	26.4	33.8	-22.0%
Total	290.0	288.0	355.2	-18.9%

By Region	Parole Intakes		Parole Discharges		
	Monthly	YTD	Monthly	YTD	LOS
<i>Central Region</i>	22	121	20	132	6.8
<i>Northeast Region</i>	9	90	11	97	6.3
<i>Southern Region</i>	3	52	13	68	6.4
<i>Western Region</i>	1	36	2	23	7.1
Total	35	299	46	320	6.6

