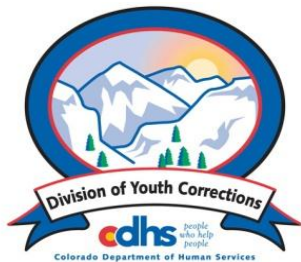


DECEMBER 2013 MONTHLY POPULATION REPORT FY 2013 - 2014

Prepared by the Division of Youth Corrections
(DYC)
Research and Evaluation Unit
January 23, 2014



Colorado Department of Human Services
Division of Youth Corrections

Working with Colorado Communities to Achieve Justice

December 2013 DYC Population Report

I. Summary Population Data	1
II. Detention ADP by Facility	2
III. Commitment Services	
A. State and Contract ADP by Facility	3
B. Community/Other Residential ADP by Facility	4
IV. Commitment ADP and New Commitments by Region	5
V. Parole Services	6



December 2013 DYC Population Report

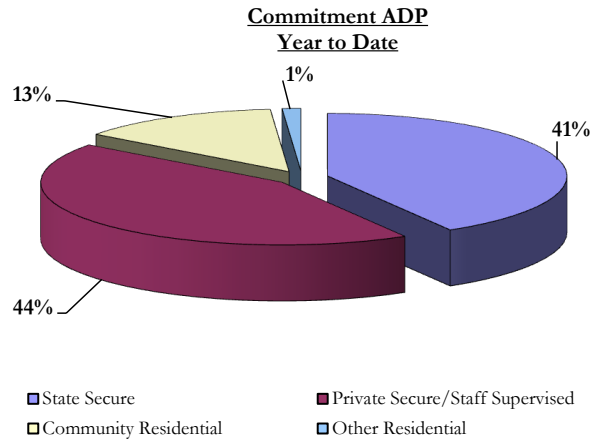
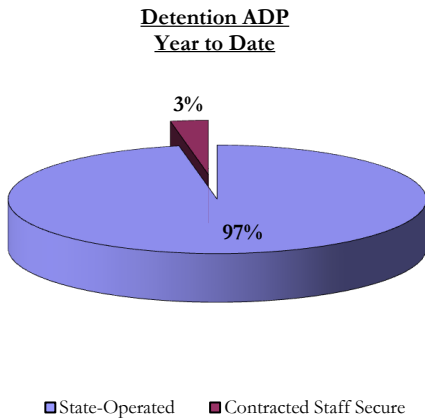
I. Summary Population Data*

DETAINED YOUTH				
	December 2013		YTD	
	ADP	% change	ADP	LOS
State-Operated	267.4	-6.2%	286.4	14.8 days
Contracted Staff Secure	8.7	-16.3%	8.6	20.4 days
Total Detained	276.2	-6.5%	295.0	15.0 days

COMMITTED YOUTH				
	December 2013		YTD	
	ADP	% change	ADP	LOS
State Secure	350.3	0.0%	335.4	9.4 months
Private Secure/Staff Supervised	348.0	-3.0%	352.7	7.0 months
Community Residential	101.7	-3.2%	109.3	2.3 months
Other Residential	9.3	0.4%	10.1	6.0 days
Total Committed Residential	809.3	-1.7%	807.5	18.9 months
<i>Committed Residential w/o Boulder</i>	<i>805.4</i>	<i>-1.8%</i>	<i>802.2</i>	<i>-</i>

PAROLE YOUTH				
	December 2013		YTD	
	ADP	% change	ADP	LOS
Parole	286.4	2.5%	284.8	6.7 months

TOTAL STATEWIDE ADP				
	December 2013		YTD	
	ADP	% change	ADP	LOS
DETENTION	276.2	-6.5%	295.0	15.0 days
COMMITMENT	809.3	-1.7%	807.5	18.9 months
PAROLE	286.4	2.5%	284.8	6.7 months
STATE TOTAL	1,371.9	-1.9%	1,387.3	N/A



*Due to rounding, totals may not add to 100%.

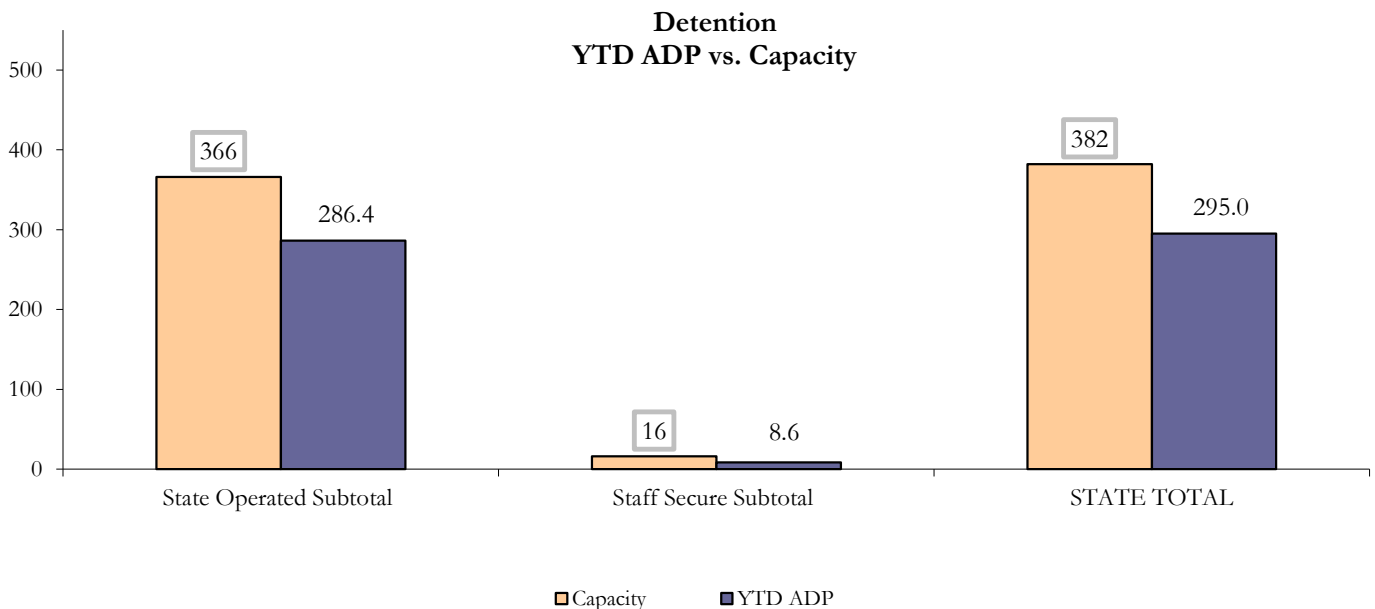
December 2013 DYC Population Report

II. Detention ADP by Facility

State Operated Detention							
Facility	Operating Capacity	Average Daily Population			New Admissions		LOS (days)
		Monthly	YTD	YTD % of Cap	Monthly	YTD	YTD
Adams	30	17.2	22.5	74.9%	28	238	17.1
Gilliam	64	56.5	55.9	87.3%	86	553	17.1
Grand Mesa	27	9.7	17.1	63.3%	18	166	16.6
Marvin Foote	61	43.0	44.7	73.2%	84	618	13.6
Mount View	41	27.8	30.9	75.3%	65	375	13.2
Platte Valley	64	52.0	49.0	76.6%	99	643	13.2
Pueblo	28	16.7	22.1	79.1%	38	272	14.1
Spring Creek	51	44.4	44.3	86.9%	73	457	16.1
State Subtotal	366	267.4	286.4	78.3%	491	3,322	14.8

Staff Secure Detention							
Facility	Operating Capacity	Average Daily Population			New Admissions		LOS (days)
		Monthly	YTD	YTD % of Cap	Monthly	YTD	YTD
Brown Center	3	1.6	1.0	34.7%	3	11	17.4
Robert DeNier	9	3.7	5.4	60.0%	2	33	28.0
Youthtrack San Luis Valley	4	3.4	2.2	53.9%	6	28	11.5
Staff Secure Subtotal	16	8.7	8.6	53.7%	11	72	20.4

STATEWIDE TOTAL							
	Operating Capacity	Average Daily Population			New Admissions		LOS (days)
		Monthly	YTD	YTD % of Cap	Monthly	YTD	YTD
Total Detention	382	276.2	295.0	77.2%	502	3,394	15.0



December 2013 DYC Population Report

III. Commitment Services

A. State and Contract ADP by Facility

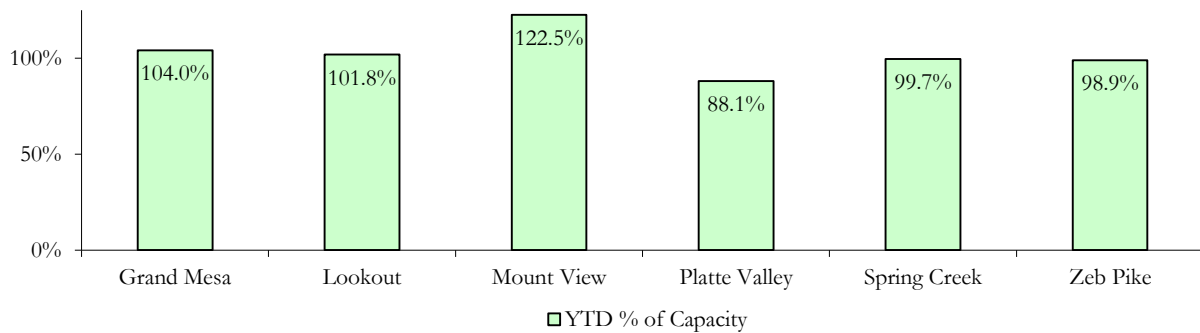
STATE SECURE				
Facility	ADP		Capacity	
	State Secure		Design	
	Monthly	YTD	Capacity	% of YTD
<i>Adams*</i>	0.0	0.1	-	-
<i>Gilliam*</i>	0.0	0.2	-	-
Grand Mesa	43.3	41.6	40	104.0%
Lookout	133.6	132.4	130	101.8%
<i>Marvin Foote*</i>	0.2	0.4	-	-
Mount View	65.4	61.3	50	122.5%
Platte Valley	36.0	34.3	39	88.1%
<i>Pueblo*</i>	1.8	0.6	-	-
Spring Creek	32.9	28.9	29	99.7%
Zeb Pike	37.1	35.6	36	98.9%
Assessment Total	34.6	39.2	-	
Secure Total	315.7	296.2	-	
GRAND TOTAL	350.3	335.4	324	103.5%

**Detention only facilities with commitment ADP due to committed youth being held in detention prior to transfer.*

CONTRACT + STAFF SUPERVISED

Facility/Program	ADP	
	Monthly	YTD
Alternative Homes For Youth - Greeley	14.5	13.2
Betty K. Marler Center	41.0	40.6
Brown Center	2.9	4.1
Children's Ark at Pueblo	6.4	7.4
Devereux Cleo Wallace	28.7	25.0
Gateway Residential Program - Delta	3.7	5.5
Hilltop (Residential Youth Services)	2.3	2.4
Jefferson Hills - Aurora	38.1	38.0
Mountain Crest/Poudre Valley Health System	8.2	10.1
Ridge View	172.4	174.2
Robert DeNier	8.8	10.3
Southern Peaks	7.4	9.6
Third Way Center - Lowry	13.6	12.3
TOTAL	348.0	352.7

**State Secure Commitment
Percent of Design Capacity by Facility**



December 2013

DYC Population Report

III. Commitment Services Continued

B. Community/Other Residential ADP by Facility

COMMUNITY RESIDENTIAL		
	<i>Monthly</i>	<i>YTD</i>
Ariel Clinical Services	1.3	1.6
Community Corrections: Comcor	0.0	0.5
Community Corrections: Mesa County	0.7	3.7
Community Corrections and Work Release	0.1	0.9
Dale House Project	8.7	10.3
Denver Area Youth Services (DAYS)	1.0	0.7
Gateway Residential Program - Grand Junction	1.0	0.9
Griffith Centers (SR)	6.3	6.6
Job Corps	7.0	4.1
Kids Crossing	0.7	1.8
Mt Evans Qualifying House	9.9	10.4
Savio House	1.0	1.3
Southern Region Independent Foster Home	0.9	0.8
Summit Treatment Service, Inc	12.9	10.2
Synergy Administration	2.4	4.1
Third Way Center	2.1	3.1
Third Way Center, Pontiac	5.7	5.7
Third Way Center, York	9.1	9.7
Third Way Center, Lincoln	7.8	10.7
Turning Point Center, Prospect	2.3	2.7
Turning Point, Mathews St.	4.9	5.0
Whimspire Child Placement	4.4	3.0
Youthtrack, San Luis Valley	4.5	4.4
Youthtrack, Work and Learn	7.2	7.3
<i>Community Subtotal</i>	<i>101.7</i>	<i>109.3</i>
<i>Contract/Staff Supervised + Community Total</i>	<i>449.6</i>	<i>462.0</i>

OTHER RESIDENTIAL		
	<i>Monthly</i>	<i>YTD</i>
CMHI-Ft. Logan	0.0	0.1
CMHI-Pueblo	0.4	0.2
Job Corps Parole Program (Federally funded)	1.7	0.5
Other Mental Health Facility	0.6	0.8
Residential Mental Health Program	1.2	2.0
Residential Work Program	2.5	2.6
Shelter Care (short term)	1.2	1.0
<i>Other Residential Total*</i>	<i>9.3</i>	<i>10.1</i>

RESIDENTIAL TOTAL	809.3	807.5
--------------------------	--------------	--------------

**Due to the relatively few youth referred to these types of placements, Other Residential Totals may not add to the sum of the individual placements due to rounding errors and the method by which ADP is calculated.*

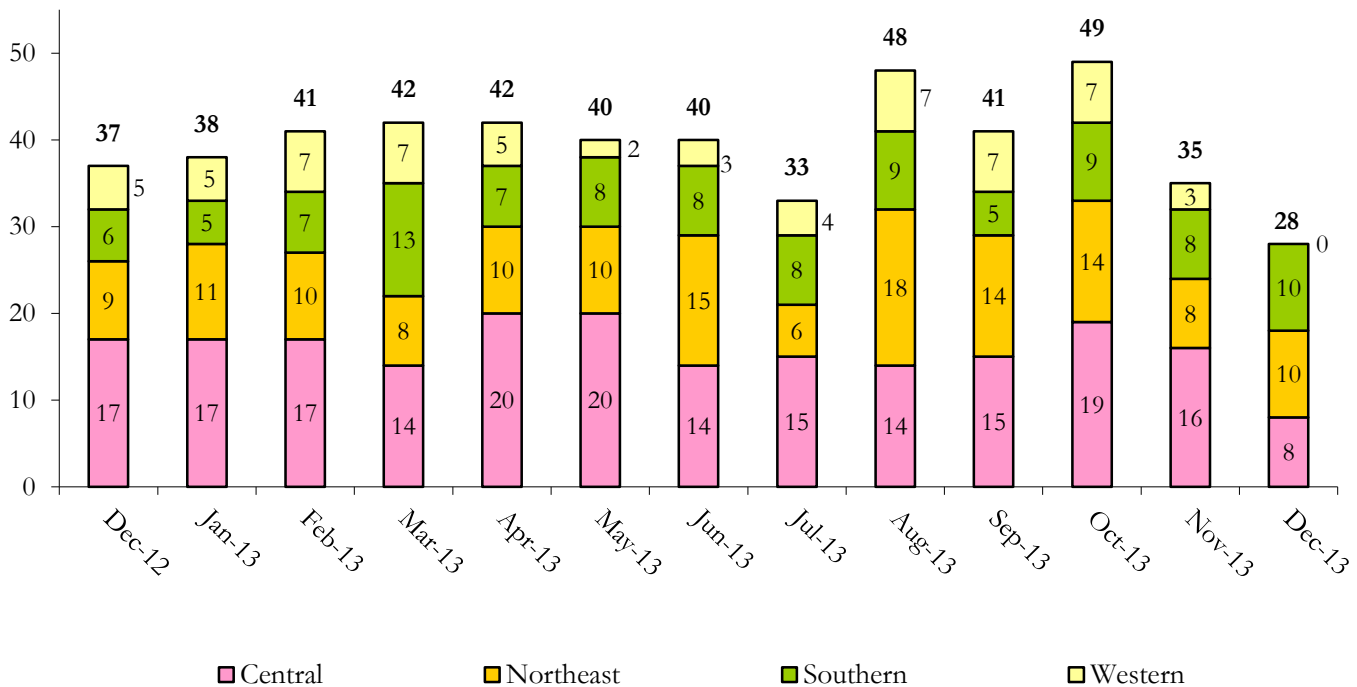
December 2013 DYC Population Report

IV. Commitment ADP and New Commitments

COMMITMENT ADP			
Region	Monthly		YTD
	December	% Change	
<i>Central Region</i>	348.8	-0.3%	340.8
<i>Northeast Region</i>	200.5	-2.1%	204.4
<i>Southern Region</i>	162.2	0.1%	159.5
<i>Western Region</i>	97.8	-8.1%	102.8
Commitment ADP Total	809.3	-1.7%	807.5

NEW COMMITMENTS					
	FY 13-14		FY 12-13		% Change from last YTD
	December	YTD	December	YTD	
<i>Central Region</i>	8	88	17	95	-7.4%
<i>Northeast Region</i>	10	74	9	65	13.8%
<i>Southern Region</i>	10	53	6	51	3.9%
<i>Western Region</i>	0	28	5	30	-6.7%
TOTAL	28	243	37	241	0.8%

Monthly New Commitments



December 2013 DYC Population Report

V. Parole Services

PAROLE ADP				
Region	Monthly	YTD		% Change fm prev YTD
		FY 13-14	FY 12-13	
<i>Central Region</i>	113.0	119.2	146.4	-18.5%
<i>Northeast Region</i>	86.5	81.4	108.2	-24.8%
<i>Southern Region</i>	55.5	60.4	73.4	-17.8%
<i>Western Region</i>	31.4	23.8	32.3	-26.3%
Total	286.4	284.8	360.3	-21.0%

Parole Intakes			Parole Discharges		
By Region	Monthly	YTD	Monthly	YTD	LOS
<i>Central Region</i>	18	99	17	112	7.0
<i>Northeast Region</i>	18	78	13	83	6.5
<i>Southern Region</i>	9	47	11	55	6.4
<i>Western Region</i>	9	33	3	20	6.8
Total	54	257	44	270	6.7

