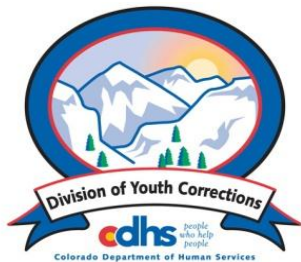


NOVEMBER 2013 MONTHLY POPULATION REPORT FY 2013 - 2014

Prepared by the Division of Youth Corrections
(DYC)
Research and Evaluation Unit
December 23, 2013



Colorado Department of Human Services
Division of Youth Corrections

Working with Colorado Communities to Achieve Justice

November 2013 DYC Population Report

I. Summary Population Data	1
II. Detention ADP by Facility	2
III. Commitment Services	
A. State and Contract ADP by Facility	3
B. Community/Other Residential ADP by Facility	4
IV. Commitment ADP and New Commitments by Region	5
V. Parole Services	6



November 2013 DYC Population Report

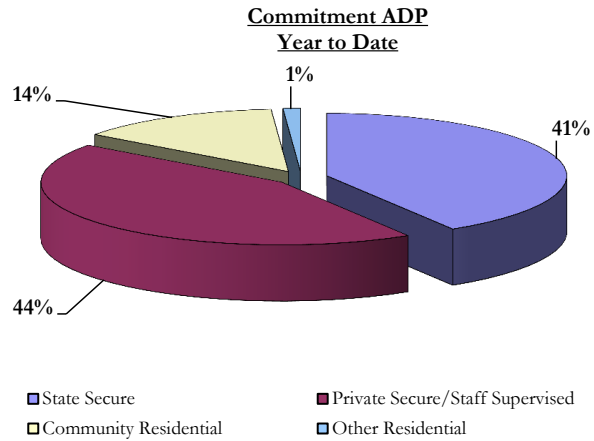
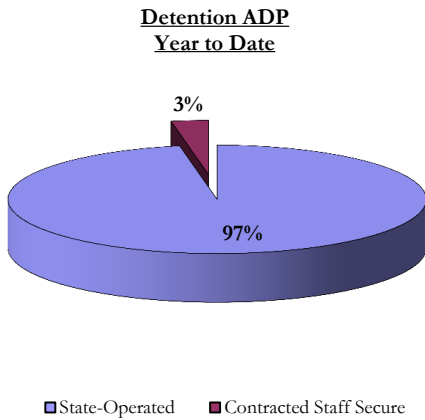
I. Summary Population Data*

DETAINED YOUTH				
	November 2013		YTD	
	ADP	% change	ADP	LOS
State-Operated	285.1	1.4%	290.7	14.9 days
Contracted Staff Secure	10.4	24.0%	8.6	21.3 days
Total Detained	295.5	2.1%	299.3	15.0 days

COMMITTED YOUTH				
	November 2013		YTD	
	ADP	% change	ADP	LOS
State Secure	350.3	-2.0%	332.2	9.4 months
Private Secure/Staff Supervised	358.6	1.0%	353.8	7.0 months
Community Residential	105.0	6.4%	110.6	2.4 months
Other Residential	9.3	-29.4%	9.3	7.3 days
Total Committed Residential	823.2	1.6%	805.9	19.0 months
<i>Committed Residential w/o Boulder</i>	<i>820.0</i>	<i>1.7%</i>	<i>800.3</i>	-

PAROLE YOUTH				
	November 2013		YTD	
	ADP	% change	ADP	LOS
Parole	279.5	-2.1%	282.8	6.5 months

TOTAL STATEWIDE ADP				
	November 2013		YTD	
	ADP	% change	ADP	LOS
DETENTION	295.5	2.1%	299.3	15.0 days
COMMITMENT	823.2	1.6%	805.9	19.0 months
PAROLE	279.5	-2.1%	282.8	6.5 months
STATE TOTAL	1,398.2	0.9%	1,388.0	N/A



*Due to rounding, totals shown may not be an exact sum of the subtotals

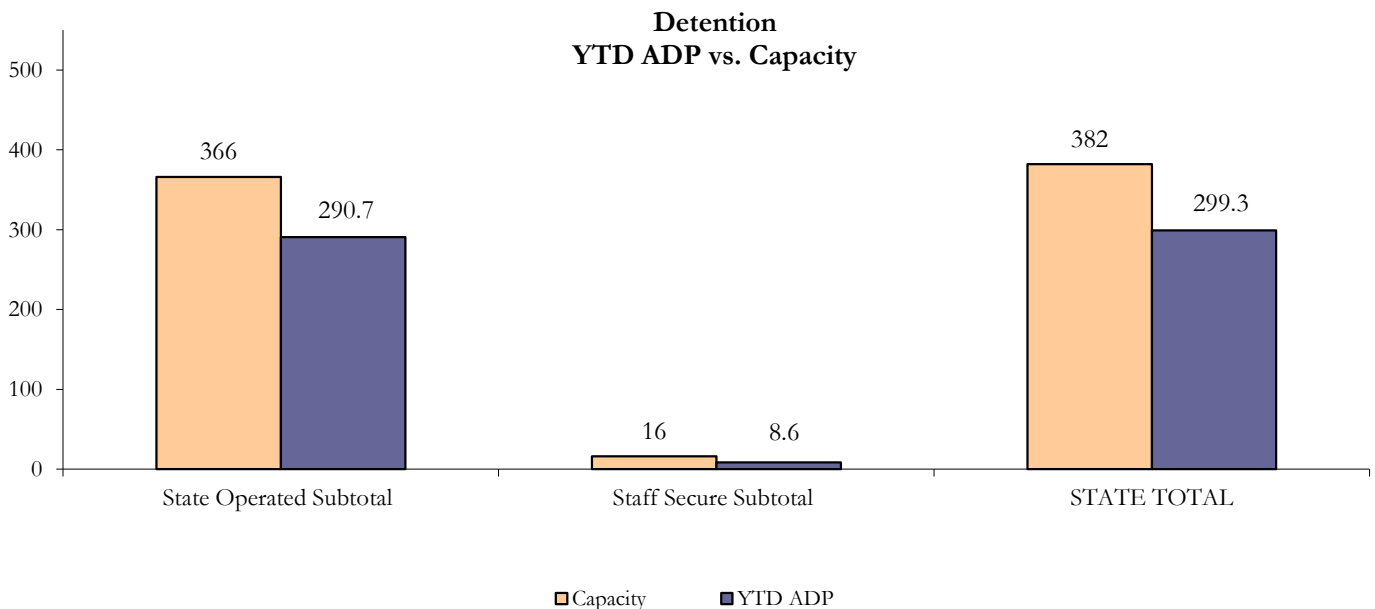
November 2013 DYC Population Report

II. Detention ADP by Facility

State Operated Detention							
Facility	Operating Capacity	Average Daily Population			New Admissions		LOS (days)
		Monthly	YTD	YTD % of Cap	Monthly	YTD	YTD
Adams	30	23.2	23.5	78.5%	45	210	17.4
Gilliam	64	55.0	55.7	87.1%	82	467	17.2
Grand Mesa	27	14.5	18.6	68.8%	28	148	16.6
Marvin Foote	61	42.7	45.0	73.8%	108	534	13.3
Mount View	41	28.5	31.6	77.1%	48	311	13.5
Platte Valley	64	56.7	48.6	75.9%	125	545	13.0
Pueblo	28	22.9	23.1	82.6%	56	234	14.8
Spring Creek	51	41.6	44.5	87.3%	65	384	16.2
State Subtotal	366	285.1	290.7	79.4%	557	2,833	14.9

Staff Secure Detention							
Facility	Operating Capacity	Average Daily Population			New Admissions		LOS (days)
		Monthly	YTD	YTD % of Cap	Monthly	YTD	YTD
Brown Center	3	2.6	0.9	30.8%	2	8	8.3
Robert DeNier	9	5.3	5.7	63.9%	4	31	29.2
Youthtrack San Luis Valley	4	2.6	1.9	47.6%	7	22	12.2
Staff Secure Subtotal	16	10.4	8.6	53.6%	13	61	21.3

STATEWIDE TOTAL							
	Operating Capacity	Average Daily Population			New Admissions		LOS (days)
		Monthly	YTD	YTD % of Cap	Monthly	YTD	YTD
Total Detention	382	295.5	299.3	78.3%	570	2,894	15.0



November 2013 DYC Population Report

III. Commitment Services

A. State and Contract ADP by Facility

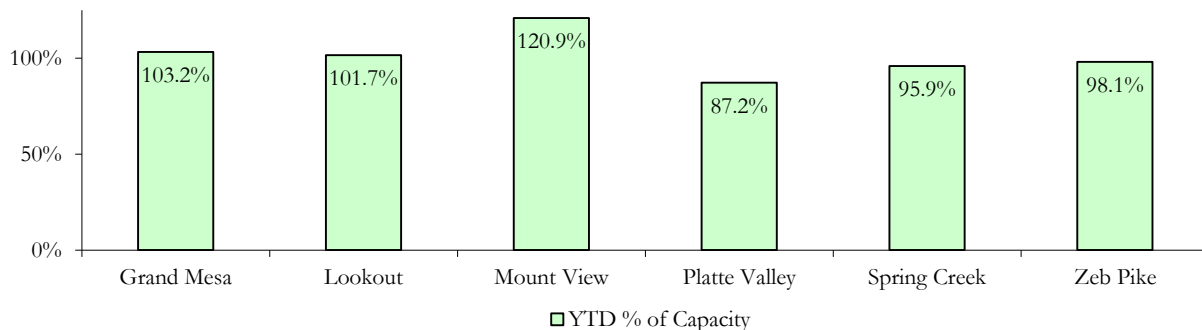
STATE SECURE				
Facility	ADP		Capacity	
	State Secure		Design	
	Monthly	YTD	Capacity	% of YTD
Adams*	0.3	0.2	-	-
Gilliam*	0.0	0.2	-	-
Grand Mesa	46.3	41.3	40	103.2%
Lookout	133.9	132.2	130	101.7%
Marvin Foote*	0.4	0.4	-	-
Mount View	70.8	60.4	50	120.9%
Platte Valley	31.3	34.0	39	87.2%
Pueblo*	1.2	0.5	-	-
Spring Creek	29.5	27.8	29	95.9%
Zeb Pike	36.7	35.3	36	98.1%
Assessment Total	45.5	40.1	-	
Secure Total	304.8	292.1	-	
GRAND TOTAL	350.3	332.2	324	102.5%

*Detention only facilities with commitment ADP due to committed youth being held in detention prior to transfer.

CONTRACT + STAFF SUPERVISED

Facility/Program	ADP	
	Monthly	YTD
Alternative Homes For Youth - Greeley	13.2	12.9
Betty K. Marler Center	41.0	40.6
Brown Center	3.3	4.3
Children's Ark at Pueblo	7.3	7.6
Devereux Cleo Wallace	28.0	24.3
Gateway Residential Program - Delta	5.6	5.8
Hilltop (Residential Youth Services)	2.4	2.4
Jefferson Hills - Aurora	38.5	38.1
Mountain Crest/Poudre Valley Health System	10.3	10.5
Ridge View	176.1	174.6
Robert DeNier	9.8	10.6
Southern Peaks	9.9	10.0
Third Way Center - Lowry	13.2	12.0
TOTAL	358.6	353.8

**State Secure Commitment
Percent of Design Capacity by Facility**



November 2013 DYC Population Report

III. Commitment Services Continued

B. Community/Other Residential ADP by Facility

COMMUNITY RESIDENTIAL		
	<i>Monthly</i>	<i>YTD</i>
Ariel Clinical Services	2.0	1.6
Community Corrections: Comcor	0.0	0.7
Community Corrections: Mesa County	2.7	4.3
Community Corrections and Work Release	1.0	1.0
Dale House Project	10.1	10.6
Denver Area Youth Services (DAYS)	1.0	0.6
Gateway Residential Program - Grand Junction	1.0	0.9
Griffith Centers (SR)	6.6	6.7
Job Corps	5.5	3.5
Kids Crossing	1.0	2.0
Mt Evans Qualifying House	10.8	10.5
Savio House	1.0	1.3
Southern Region Independent Foster Home	1.0	0.8
Summit Treatment Service, Inc	9.0	9.7
Synergy Administration	3.0	4.5
Third Way Center	3.0	3.4
Third Way Center, Pontiac	6.3	5.7
Third Way Center, York	8.0	9.8
Third Way Center, Lincoln	7.5	11.3
Turning Point Center, Prospect	2.5	2.8
Turning Point, Mathews St.	5.7	5.0
Whimspire Child Placement	3.7	2.5
Youthtrack, San Luis Valley	5.7	4.3
Youthtrack, Work and Learn	7.0	7.3
<i>Community Subtotal</i>	<i>105.0</i>	<i>110.6</i>
<i>Contract/Staff Supervised + Community Total</i>	<i>463.6</i>	<i>464.4</i>
OTHER RESIDENTIAL		
	<i>Monthly</i>	<i>YTD</i>
CMHI-Ft. Logan	0.4	0.1
CMHI-Pueblo	0.9	0.2
Job Corps Parole Program (Federally funded)	0.6	0.2
Other Mental Health Facility	1.8	0.8
Residential Mental Health Program	1.3	2.2
Residential Work Program	3.3	2.6
Shelter Care (short term)	1.9	0.9
<i>Other Residential Total*</i>	<i>9.3</i>	<i>9.3</i>
RESIDENTIAL TOTAL	823.2	805.9

**Due to the relatively few youth referred to these types of placements, Other Residential Totals may not add to the sum of the individual placements due to rounding errors and the method by which ADP is calculated.*

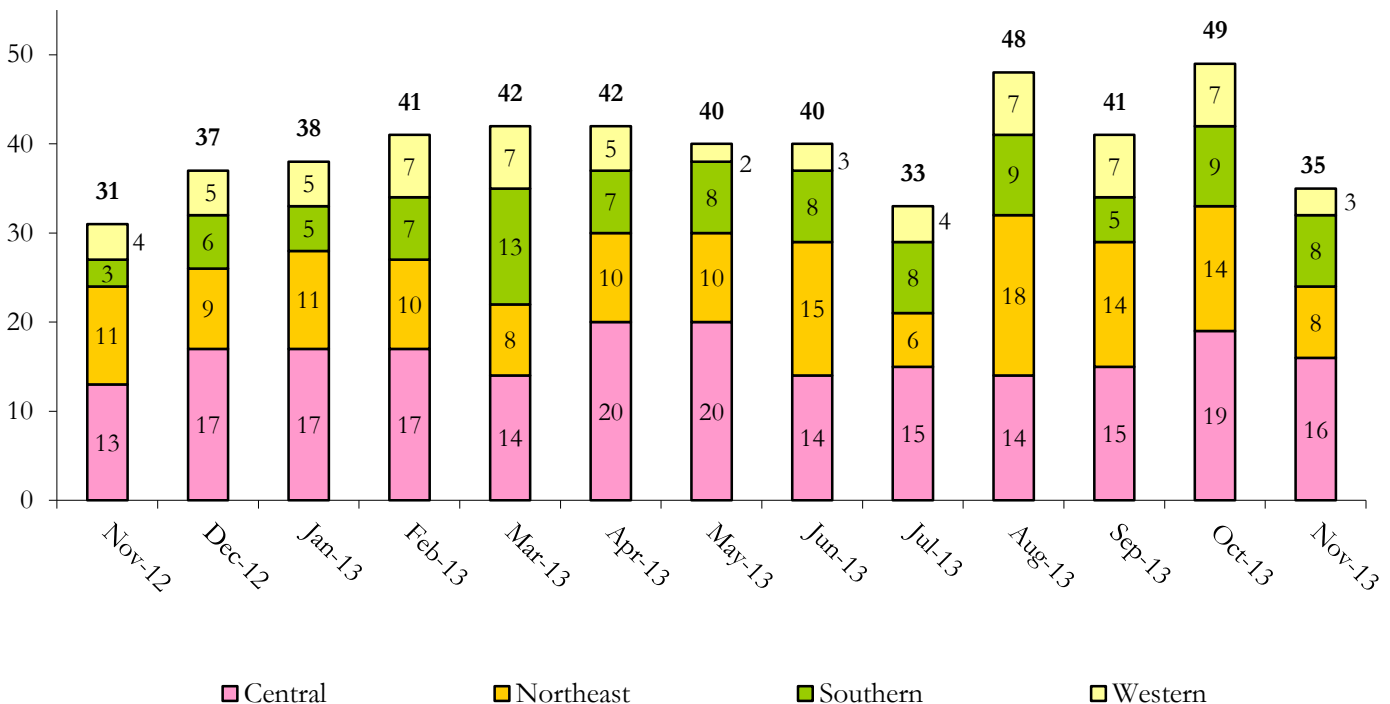
November 2013 DYC Population Report

IV. Commitment ADP and New Commitments

COMMITMENT ADP			
Region	Monthly		YTD
	November	% Change	
<i>Central Region</i>	350.0	1.8%	339.1
<i>Northeast Region</i>	204.7	0.3%	205.1
<i>Southern Region</i>	162.0	2.6%	159.2
<i>Western Region</i>	106.5	1.7%	102.5
Commitment ADP Total	823.2	1.6%	805.9

NEW COMMITMENTS					
	FY 13-14		FY 12-13		% Change from last YTD
	November	YTD	November	YTD	
<i>Central Region</i>	16	79	13	78	1.3%
<i>Northeast Region</i>	8	63	11	54	16.7%
<i>Southern Region</i>	8	43	3	44	-2.3%
<i>Western Region</i>	3	28	4	24	16.7%
TOTAL	35	213	31	200	6.5%

Monthly New Commitments



November 2013 DYC Population Report

V. Parole Services

PAROLE ADP				
Region	Monthly	YTD		% Change fm prev YTD
		FY 13-14	FY 12-13	
<i>Central Region</i>	115.8	120.5	149.3	-19.3%
<i>Northeast Region</i>	80.8	79.6	111.8	-28.8%
<i>Southern Region</i>	55.8	60.4	74.1	-18.4%
<i>Western Region</i>	27.1	22.2	32.8	-32.1%
Total	279.5	282.8	368.0	-23.1%

Parole Intakes			Parole Discharges		
By Region	Monthly	YTD	Monthly	YTD	LOS
<i>Central Region</i>	12	81	14	94	6.7
<i>Northeast Region</i>	14	57	10	67	6.0
<i>Southern Region</i>	3	38	9	43	6.4
<i>Western Region</i>	7	23	5	17	7.3
Total	36	199	38	221	6.5

