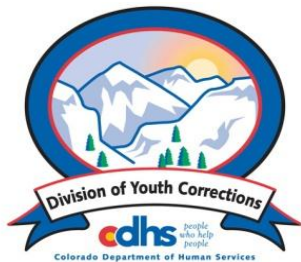


# SEPTEMBER 2013 MONTHLY POPULATION REPORT FY 2013 - 2014

---

Prepared by the Division of Youth Corrections  
(DYC)  
Research and Evaluation Unit  
October 21, 2013



Colorado Department of Human Services  
Division of Youth Corrections

---

Working with Colorado Communities to Achieve Justice

# September 2013 DYC Population Report

<b>I. Summary Population Data</b>	<b>1</b>
<b>II. Detention ADP by Facility</b>	<b>2</b>
<b>III. Commitment Services</b>	
A. State and Contract ADP by Facility	3
B. Community/Other Residential ADP by Facility	4
<b>IV. Commitment ADP and New Commitments by Region</b>	<b>5</b>
<b>V. Parole Services</b>	<b>6</b>



# September 2013 DYC Population Report

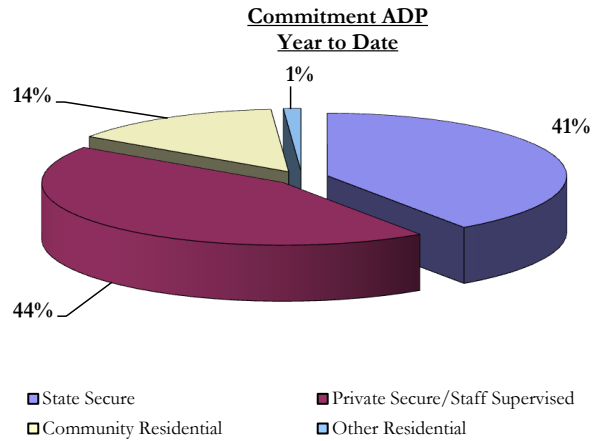
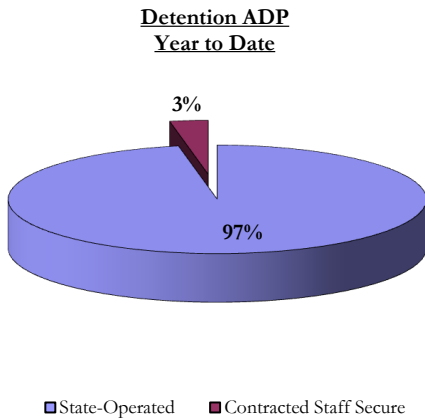
## I. Summary Population Data\*

DETAINED YOUTH				
	September 2013		YTD	
	ADP	% change	ADP	LOS**
State-Operated	294.9	-0.6%	295.9	15.2 days
Contracted Staff Secure	9.8	35.1%	9.0	15.5 days
<b>Total Detained</b>	<b>304.6</b>	<b>0.2%</b>	<b>304.9</b>	<b>15.2 days</b>

COMMITTED YOUTH				
	September 2013		YTD	
	ADP	% change	ADP	LOS**
State Secure	331.9	24.5%	322.4	9.4 months
Private Secure/Staff Supervised	349.3	0.3%	351.4	6.5 months
Community Residential	112.3	-4.2%	114.1	2.6 months
Other Residential	7.4	27.0%	9.3	8.5 days
<b>Total Committed Residential</b>	<b>800.8</b>	<b>0.6%</b>	<b>797.2</b>	<b>18.7 months</b>
<i>Committed Residential w/o Boulder</i>	<i>793.7</i>	<i>0.7%</i>	<i>790.4</i>	-

PAROLE YOUTH				
	September 2013		YTD	
	ADP	% change	ADP	LOS**
Parole	280.6	2.3%	282.1	6.4 months

TOTAL STATEWIDE ADP				
	September 2013		YTD	
	ADP	% change	ADP	LOS**
<b>DETENTION</b>	<b>304.6</b>	<b>0.2%</b>	<b>304.9</b>	<b>15.2 days</b>
<b>COMMITMENT</b>	<b>800.8</b>	<b>0.6%</b>	<b>797.2</b>	<b>18.7 months</b>
<b>PAROLE</b>	<b>280.6</b>	<b>2.3%</b>	<b>282.1</b>	<b>6.4 months</b>
<b>STATE TOTAL</b>	<b>1,386.1</b>	<b>0.9%</b>	<b>1,384.2</b>	<b>N/A</b>



\*Due to rounding, totals shown may not be an exact sum of the subtotals

\*\*Important Note: Length of Stay figures should be cautiously interpreted during the first few months of a new Fiscal Year due to the small number of total discharges/releases in the beginning of the fiscal year. LOS figures become more reliable as the number of discharged/released youth accumulates over the course of the FY.

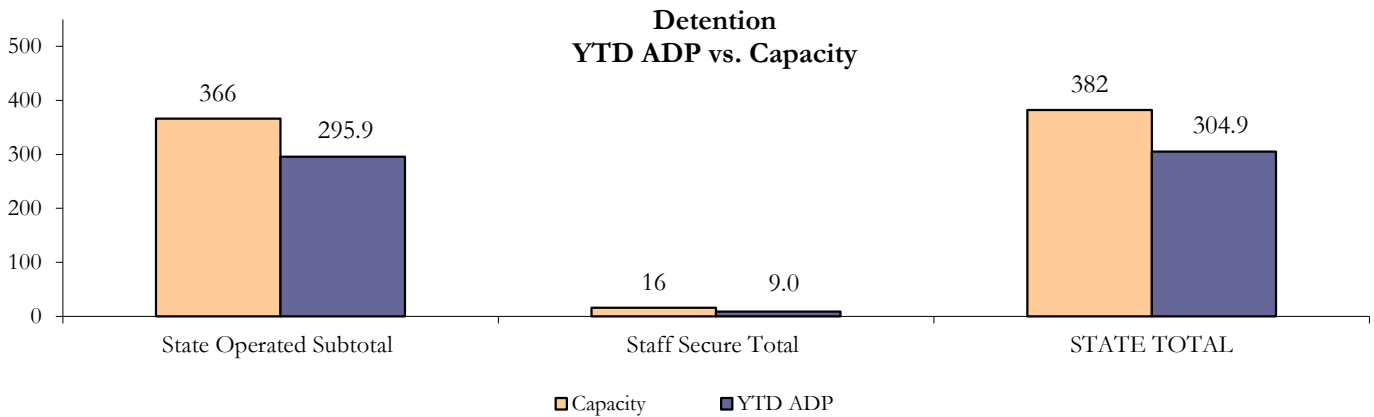
# September 2013 DYC Population Report

## II. Detention ADP by Facility

State Operated Detention							
Facility	Operating Capacity	Average Daily Population			New Admissions		LOS* (days)
		Monthly	YTD	YTD % of Cap	Monthly	YTD	YTD
Adams	30	25.5	24.2	80.5%	37	124	18.3
Gilliam	64	53.5	54.9	85.8%	84	278	17.1
Grand Mesa	27	21.8	20.0	74.1%	27	95	15.9
Marvin Foote	61	44.7	47.1	77.2%	87	317	14.4
Mount View	41	32.6	33.4	81.3%	48	193	12.9
Platte Valley	64	47.7	47.6	74.4%	93	310	12.9
Pueblo	28	22.8	24.1	85.9%	39	134	15.6
Spring Creek	51	46.2	44.7	87.6%	88	224	16.9
<b>State Subtotal</b>	<b>366</b>	<b>294.9</b>	<b>295.9</b>	<b>80.8%</b>	<b>503</b>	<b>1,675</b>	<b>15.2</b>

Staff Secure Detention							
Facility	Operating Capacity	Average Daily Population			New Admissions		LOS* (days)
		Monthly	YTD	YTD % of Cap	Monthly	YTD	YTD
Brown Center	3	0.0	0.2	7.9%	0	3	7.2
Robert DeNier	9	7.1	7.1	78.9%	9	23	16.9
Youthtrack San Luis Valley	4	2.7	1.7	42.6%	2	9	14.7
<b>Staff Secure Subtotal</b>	<b>16</b>	<b>9.8</b>	<b>9.0</b>	<b>56.5%</b>	<b>11</b>	<b>35</b>	<b>15.5</b>

STATEWIDE TOTAL							
	Operating Capacity	Average Daily Population			New Admissions		LOS* (days)
		Monthly	YTD	YTD % of Cap	Monthly	YTD	YTD
<b>Total Detention</b>	<b>382</b>	<b>304.6</b>	<b>304.9</b>	<b>79.8%</b>	<b>514</b>	<b>1,710</b>	<b>15.2</b>



\*Length of Stay figures should be cautiously interpreted during the first few months of a new Fiscal Year due to the small number of total discharges/ releases in the beginning of the fiscal year. LOS figures become more reliable as the number of discharged/ released youth accumulates over the course of the FY.

# September 2013 DYC Population Report

## III. Commitment Services

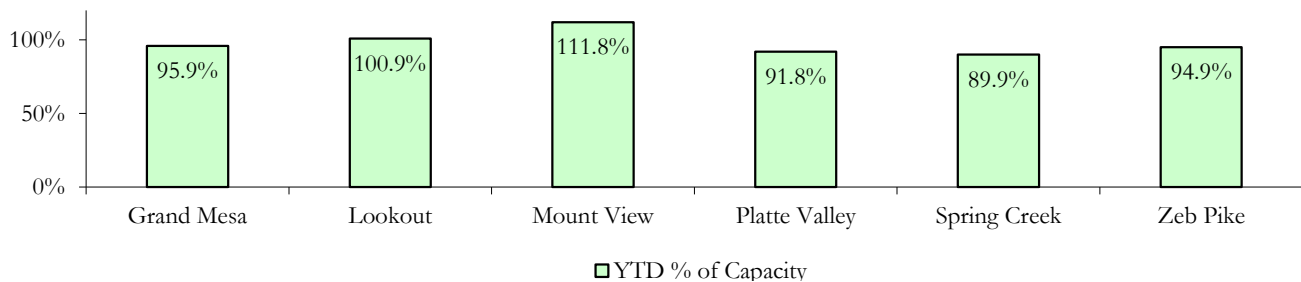
### A. State and Contract ADP by Facility

STATE SECURE					
<i>Facility</i>		ADP		Capacity	
		State Secure		Design	
		Monthly	YTD	Capacity	% of YTD
<i>Adams*</i>		0.9	0.2	-	-
<i>Gilliam*</i>		0.3	0.2	-	-
Grand Mesa		40.5	38.4	40	95.9%
Lookout		130.3	131.1	130	100.9%
<i>Marvin Foote*</i>		0.6	0.4	-	-
Mount View		65.8	55.9	50	111.8%
Platte Valley		31.9	35.8	39	91.8%
<i>Pueblo*</i>		0.1	0.2	-	-
Spring Creek		27.7	26.1	29	89.9%
Zeb Pike		33.7	34.2	36	94.9%
<b>Assessment Total</b>		<b>44.5</b>	<b>37.3</b>	-	
<b>Secure Total</b>		<b>287.4</b>	<b>285.1</b>	-	
<b>GRAND TOTAL</b>		<b>331.9</b>	<b>322.4</b>	<b>324</b>	<b>99.5%</b>

*\*Detention only facilities with commitment ADP due to committed youth being held in detention prior to transfer.*

CONTRACT + STAFF SUPERVISED		
<i>Facility/Program</i>	ADP	
	Monthly	YTD
Alternative Homes For Youth - Greeley	12.9	12.3
Betty K. Marler Center	41.0	40.3
Brown Center	5.1	5.1
Childrens Ark at Pueblo	7.6	8.0
Devereux Cleo Wallace	25.2	22.4
Gateway Residential Program - Delta	6.0	6.1
Hilltop (Residential Youth Services)	1.8	2.5
Jefferson Hills - Aurora	36.1	39.0
Mountain Crest/Poudre Valley Health System	9.7	9.9
Ridge View	174.3	173.7
Robert DeNier	9.0	10.2
Southern Peaks	8.5	10.4
Third Way Center - Lowry	12.2	11.6
<b>TOTAL</b>	<b>349.3</b>	<b>351.4</b>

**State Secure Commitment  
Percent of Design Capacity by Facility**



# September 2013 DYC Population Report

## III. Commitment Services Continued

### B. Community/Other Residential ADP by Facility

<b>COMMUNITY RESIDENTIAL</b>		
	<i>Monthly</i>	<i>YTD</i>
Ariel Clinical Services	2.0	1.3
Community Corrections: Comcor	1.0	1.0
Community Corrections: Mesa County	4.8	5.1
Community Corrections and Work Release	1.0	1.0
Dale House Project	10.5	11.0
Denver Area Youth Services (DAYS)	0.0	0.5
Gateway Residential Program - Grand Junction	1.0	1.0
Griffith Centers (SR)	7.4	6.8
Job Corps	2.9	2.5
Kids Crossing	2.7	2.6
Mt Evans Qualifying House	10.1	9.8
Savio House	1.0	1.6
Southern Region Independent Foster Home	1.0	0.7
Summit Treatment Service, Inc	9.9	9.9
Synergy Administration	4.0	5.2
Third Way Center	2.8	3.8
Third Way Center, Pontiac	5.1	5.4
Third Way Center, York	11.5	10.8
Third Way Center, Lincoln	12.9	13.2
Turning Point Center, Prospect	3.0	3.0
Turning Point, Mathews St.	3.7	4.7
Whimspire Child Placement	2.2	1.9
Youthtrack, San Luis Valley	4.7	4.0
Youthtrack, Work and Learn	7.1	7.3
<i>Community Subtotal</i>	<i>112.3</i>	<i>114.1</i>
<b><i>Contract/Staff Supervised + Community Total</i></b>	<b><i>461.6</i></b>	<b><i>465.5</i></b>
<b>OTHER RESIDENTIAL</b>		
	<i>Monthly</i>	<i>YTD</i>
CMHI-Ft. Logan	0.0	0.1
Job Corps Parole Program (Federally funded)	0.4	0.1
Other Mental Health Facility	0.8	1.1
Residential Mental Health Program	2.5	2.7
Residential Work Program	3.0	2.2
Shelter Care (short term)	1.0	0.6
<i>Other Residential Total*</i>	<i>7.4</i>	<i>9.3</i>
<b>RESIDENTIAL TOTAL</b>	<b>800.8</b>	<b>797.2</b>

*\*Due to the relatively few youth referred to these types of placements, Other Residential Totals may not add to the sum of the individual placements due to rounding errors and the method by which ADP is calculated.*

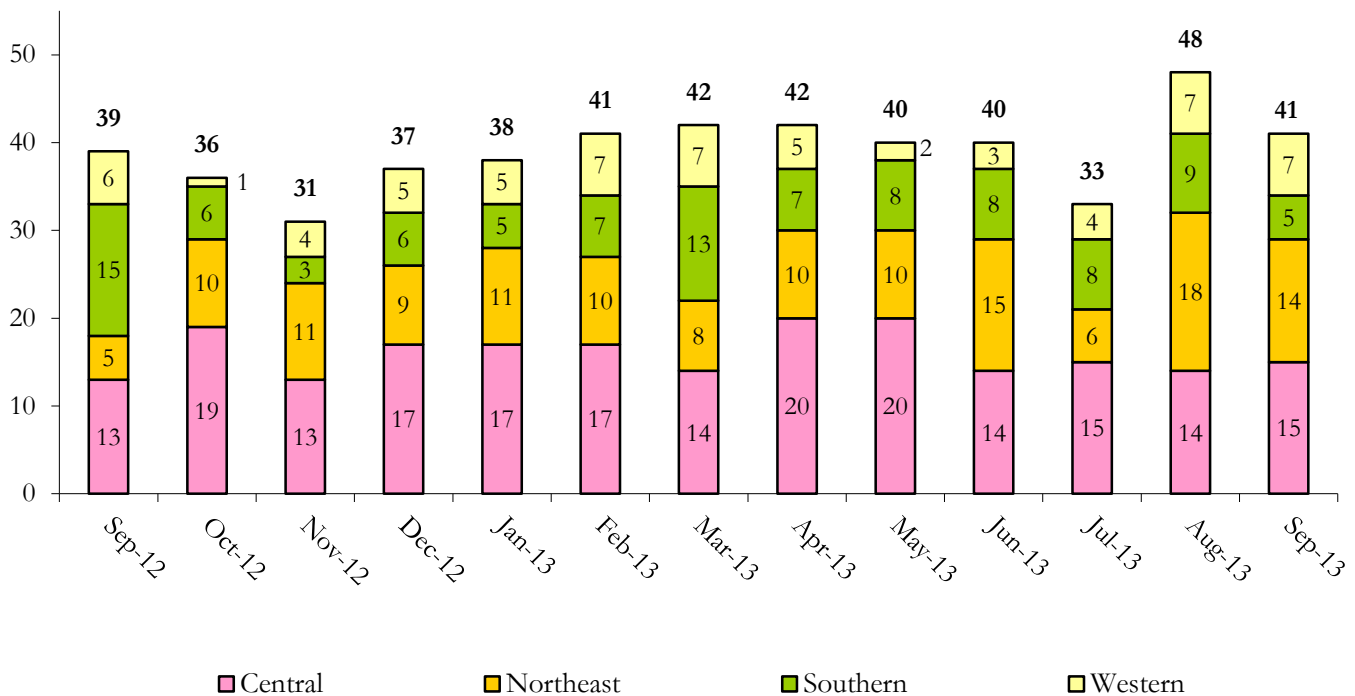
# September 2013 DYC Population Report

## IV. Commitment ADP and New Commitments

COMMITMENT ADP			
Region	Monthly		YTD
	September	% Change	
<i>Central Region</i>	338.1	1.6%	334.5
<i>Northeast Region</i>	204.0	-0.6%	205.4
<i>Southern Region</i>	155.8	-0.6%	156.8
<i>Western Region</i>	103.0	1.7%	100.5
<b>Commitment ADP Total</b>	<b>800.8</b>	<b>0.6%</b>	<b>797.2</b>

NEW COMMITMENTS					
	FY 13-14		FY 12-13		% Change from last YTD
	September	YTD	September	YTD	
<i>Central Region</i>	15	44	13	45	-2.2%
<i>Northeast Region</i>	14	39	5	33	18.2%
<i>Southern Region</i>	5	23	15	34	-32.4%
<i>Western Region</i>	7	18	6	16	12.5%
<b>TOTAL</b>	<b>41</b>	<b>124</b>	<b>39</b>	<b>128</b>	<b>-3.1%</b>

### Monthly New Commitments

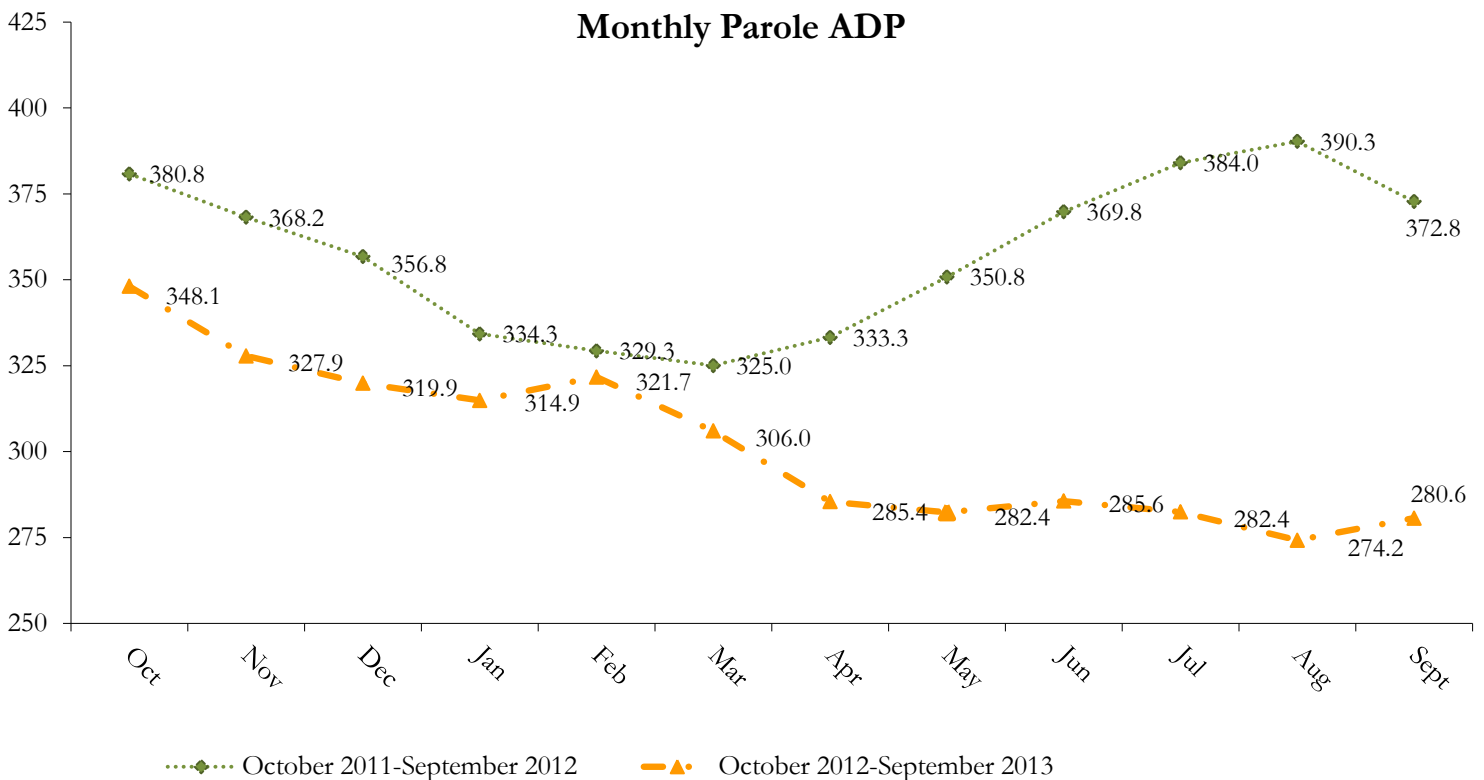


# September 2013 DYC Population Report

## V. Parole Services

PAROLE ADP				
Region	Monthly	YTD		% Change fm prev YTD
		FY 13-14	FY 12-13	
<i>Central Region</i>	119.4	122.7	159.9	-23.3%
<i>Northeast Region</i>	77.1	78.7	119.6	-34.2%
<i>Southern Region</i>	63.3	61.1	75.2	-18.7%
<i>Western Region</i>	20.9	19.6	32.5	-39.6%
<b>Total</b>	<b>280.6</b>	<b>282.1</b>	<b>387.2</b>	<b>-27.1%</b>

Parole Intakes			Parole Discharges		
By Region	Monthly	YTD	Monthly	YTD	LOS*
<i>Central Region</i>	18	51	12	54	6.5
<i>Northeast Region</i>	13	32	9	45	5.9
<i>Southern Region</i>	4	26	6	23	6.1
<i>Western Region</i>	4	10	1	11	8.0
<b>Total</b>	<b>39</b>	<b>119</b>	<b>28</b>	<b>133</b>	<b>6.4</b>



\*Length of Stay figures should be cautiously interpreted during the first few months of a new Fiscal Year due to the small number of total discharges/releases in the beginning of the fiscal year. LOS figures become more reliable as the number of discharged/released youth accumulates over the course of the FY.