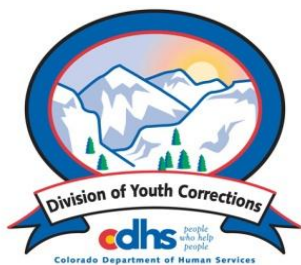


AUGUST 2013 MONTHLY POPULATION REPORT FY 2013 - 2014

Prepared by the Division of Youth Corrections
(DYC)
Research and Evaluation Unit
September 26, 2013



Colorado Department of Human Services
Division of Youth Corrections

Working with Colorado Communities to Achieve Justice

August 2013 DYC Population Report

I. Summary Population Data	1
II. Detention ADP by Facility	2
III. Commitment Services	
A. State and Contract ADP by Facility	3
B. Community/Other Residential ADP by Facility	4
IV. Commitment ADP and New Commitments by Region	5
V. Parole Services	6



August 2013 DYC Population Report

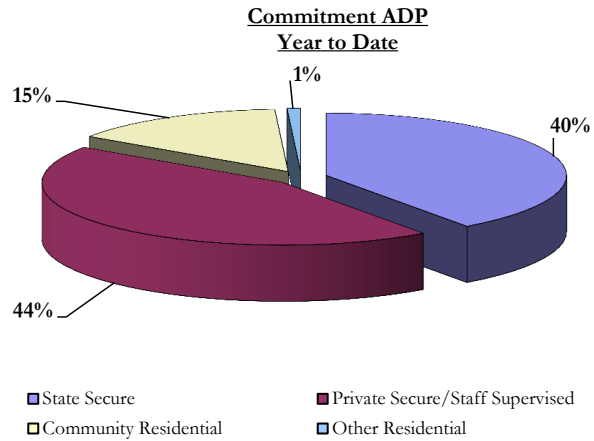
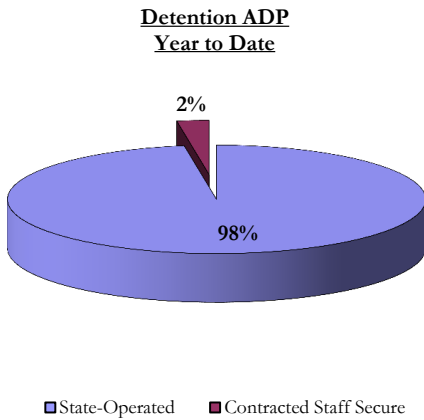
I. Summary Population Data*

DETAINED YOUTH				
	August 2013		YTD	
	ADP	% change	ADP	LOS**
State-Operated	296.7	-0.5%	296.1	15.7 days
Contracted Staff Secure	7.2	-6.0%	7.5	17.0 days
Total Detained	304.0	-0.7%	303.6	15.7 days

COMMITTED YOUTH				
	August 2013		YTD	
	ADP	% change	ADP	LOS**
State Secure	324.3	18.5%	318.7	9.5 months
Private Secure/Staff Supervised	348.4	-2.9%	353.5	6.8 months
Community Residential	117.2	2.6%	116.0	2.5 months
Other Residential	5.8	9.4%	7.1	7.4 days
Total Committed Residential	795.7	0.4%	795.2	19.0 months
<i>Committed Residential w/o Boulder</i>	<i>788.3</i>	<i>0.2%</i>	<i>788.5</i>	<i>-</i>

PAROLE YOUTH				
	August 2013		YTD	
	ADP	% change	ADP	LOS**
Parole	274.2	-2.9%	278.1	6.2 months

TOTAL STATEWIDE ADP				
	August 2013		YTD	
	ADP	% change	ADP	LOS**
DETENTION	304.0	-0.7%	303.6	15.7 days
COMMITMENT	795.7	0.4%	795.2	19.0 months
PAROLE	274.2	-2.9%	278.1	6.2 months
STATE TOTAL	1,373.9	-0.5%	1,376.9	N/A



*Due to rounding, totals shown may not be an exact sum of the subtotals

**Important Note: Length of Stay figures should be cautiously interpreted during the first few months of a new Fiscal Year due to the small number of total discharges/releases in the beginning of the fiscal year. LOS figures become more reliable as the number of discharged/released youth accumulates over the course of the FY.

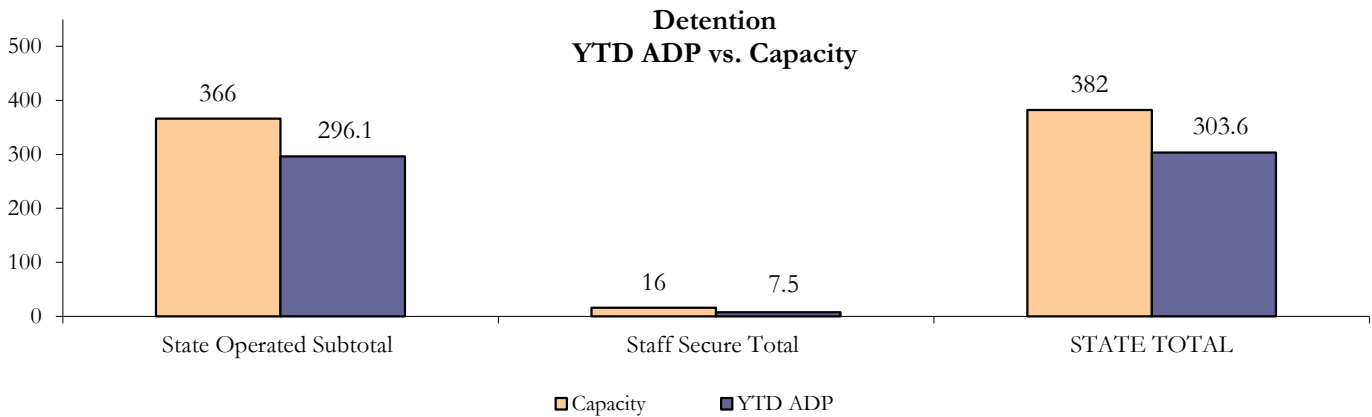
August 2013 DYC Population Report

II. Detention ADP by Facility

State Operated Detention							
Facility	Operating Capacity	Average Daily Population			New Admissions		LOS* (days)
		Monthly	YTD	YTD % of Cap	Monthly	YTD	YTD
Adams	30	22.2	23.1	76.9%	52	87	20.5
Gilliam	64	54.8	55.6	86.8%	91	194	17.2
Grand Mesa	27	18.7	19.1	70.8%	36	68	15.3
Marvin Foote	61	50.4	48.2	79.1%	113	230	14.3
Mount View	41	35.2	33.7	82.3%	72	145	12.1
Platte Valley	64	48.5	47.8	74.6%	106	218	13.5
Pueblo	28	25.0	24.7	88.1%	52	95	17.2
Spring Creek	51	41.9	44.0	86.2%	75	136	18.5
State Subtotal	366	296.7	296.1	80.9%	597	1,173	15.7

Staff Secure Detention							
Facility	Operating Capacity	Average Daily Population			New Admissions		LOS* (days)
		Monthly	YTD	YTD % of Cap	Monthly	YTD	YTD
Brown Center	3	0.7	0.3	11.7%	3	3	7.2
Robert DeNier	9	5.4	5.9	65.4%	6	12	21.6
Youthtrack San Luis Valley	4	1.2	1.2	30.8%	5	7	13.4
Staff Secure Subtotal	16	7.2	7.5	46.7%	14	22	17.0

STATEWIDE TOTAL							
	Operating Capacity	Average Daily Population			New Admissions		LOS* (days)
		Monthly	YTD	YTD % of Cap	Monthly	YTD	YTD
Total Detention	382	304.0	303.6	79.5%	611	1,195	15.7



*Length of Stay figures should be cautiously interpreted during the first few months of a new Fiscal Year due to the small number of total discharges/ releases in the beginning of the fiscal year. LOS figures become more reliable as the number of discharged/ released youth accumulates over the course of the FY.

August 2013 DYC Population Report

III. Commitment Services

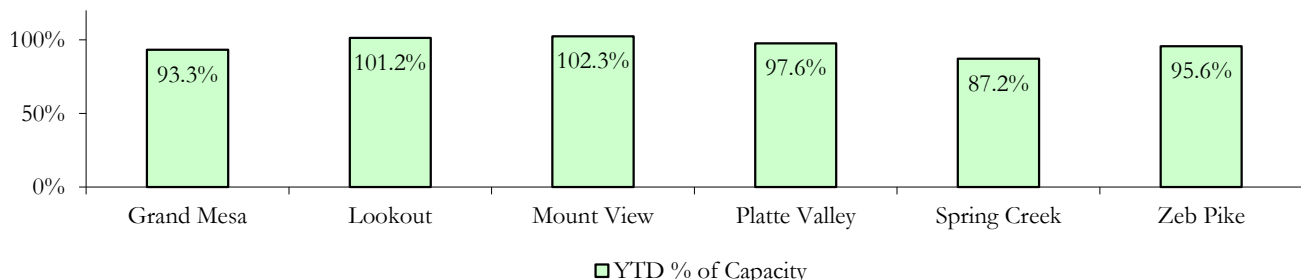
A. State and Contract ADP by Facility

STATE SECURE					
<i>Facility</i>		ADP		Capacity	
		State Secure		Design	
		Monthly	YTD	Capacity	% of YTD
<i>Adams*</i>		0.3	0.3	-	-
<i>Gilliam*</i>		0.9	0.1	-	-
Grand Mesa		40.3	37.3	40	93.3%
Lookout		129.6	131.6	130	101.2%
<i>Marvin Foote*</i>		0.3	0.3	-	-
Mount View		54.0	51.1	50	102.3%
Platte Valley		39.1	38.1	39	97.6%
<i>Pueblo*</i>		0.3	0.3	-	-
Spring Creek		24.3	25.3	29	87.2%
Zeb Pike		35.1	34.4	36	95.6%
Assessment Total		35.6	33.3	-	
Secure Total		288.7	285.4	-	
GRAND TOTAL		324.3	318.7	324	98.4%

**Detention only facilities with commitment ADP due to committed youth being held in detention prior to transfer.*

CONTRACT + STAFF SUPERVISED		
<i>Facility/Program</i>		
ADP		
Monthly	YTD	
Alternative Homes For Youth - Greeley	11.8	12.0
Betty K. Marler Center	40.9	40.0
Brown Center	5.0	5.1
Childrens Ark at Pueblo	8.1	8.2
Devereux Cleo Wallace	20.2	21.0
Gateway Residential Program - Delta	6.2	6.1
Hilltop (Residential Youth Services)	3.0	2.9
Jefferson Hills - Aurora	38.8	40.4
Mountain Crest/Poudre Valley Health System	10.3	10.0
Ridge View	173.0	173.5
Robert DeNier	10.5	11.8
Southern Peaks	9.9	11.3
Third Way Center - Lowry	10.8	11.2
TOTAL	348.4	353.5

**State Secure Commitment
Percent of Design Capacity by Facility**



August 2013 DYC Population Report

III. Commitment Services Continued

B. Community/Other Residential ADP by Facility

COMMUNITY RESIDENTIAL		
	<i>Monthly</i>	<i>YTD</i>
Ariel Clinical Services	1.0	1.0
Community Corrections: Comcor	1.0	1.0
Community Corrections: Mesa County	5.2	5.3
Community Corrections and Work Release	1.0	1.0
Dale House Project	11.0	11.2
Denver Area Youth Services (DAYS)	0.5	0.8
Gateway Residential Program - Grand Junction	1.0	1.0
Griffith Centers (SR)	6.8	6.4
Job Corps	3.0	2.3
Kids Crossing	2.8	2.5
Mt Evans Qualifying House	9.8	9.7
Savio House	1.7	1.8
Southern Region Independent Foster Home	1.0	0.5
Summit Treatment Service, Inc	9.9	9.9
Synergy Administration	4.9	5.8
Third Way Center	4.2	4.3
Third Way Center, Pontiac	4.6	4.6
Third Way Center, York	11.6	11.4
Third Way Center, Lincoln	13.3	13.3
Turning Point Center, Prospect	3.0	3.0
Turning Point, Mathews St.	4.3	5.1
Whimspire Child Placement	2.0	1.8
Youthtrack, San Luis Valley	4.6	3.6
Youthtrack, Work and Learn	9.1	8.5
<i>Community Subtotal</i>	<i>117.2</i>	<i>116.0</i>
<i>Contract/Staff Supervised + Community Total</i>	<i>465.6</i>	<i>469.4</i>
OTHER RESIDENTIAL		
	<i>Monthly</i>	<i>YTD</i>
CMHI-Ft. Logan	0.0	0.1
Other Mental Health Facility	2.0	1.8
Residential Mental Health Program	2.5	2.7
Residential Work Program	2.1	1.7
Shelter Care (short term)	0.8	0.4
<i>Other Residential Total*</i>	<i>5.8</i>	<i>7.1</i>
RESIDENTIAL TOTAL	795.7	795.2

**Due to the relatively few youth referred to these types of placements, Other Residential Totals may not add to the sum of the individual placements due to rounding errors and the method by which ADP is calculated.*

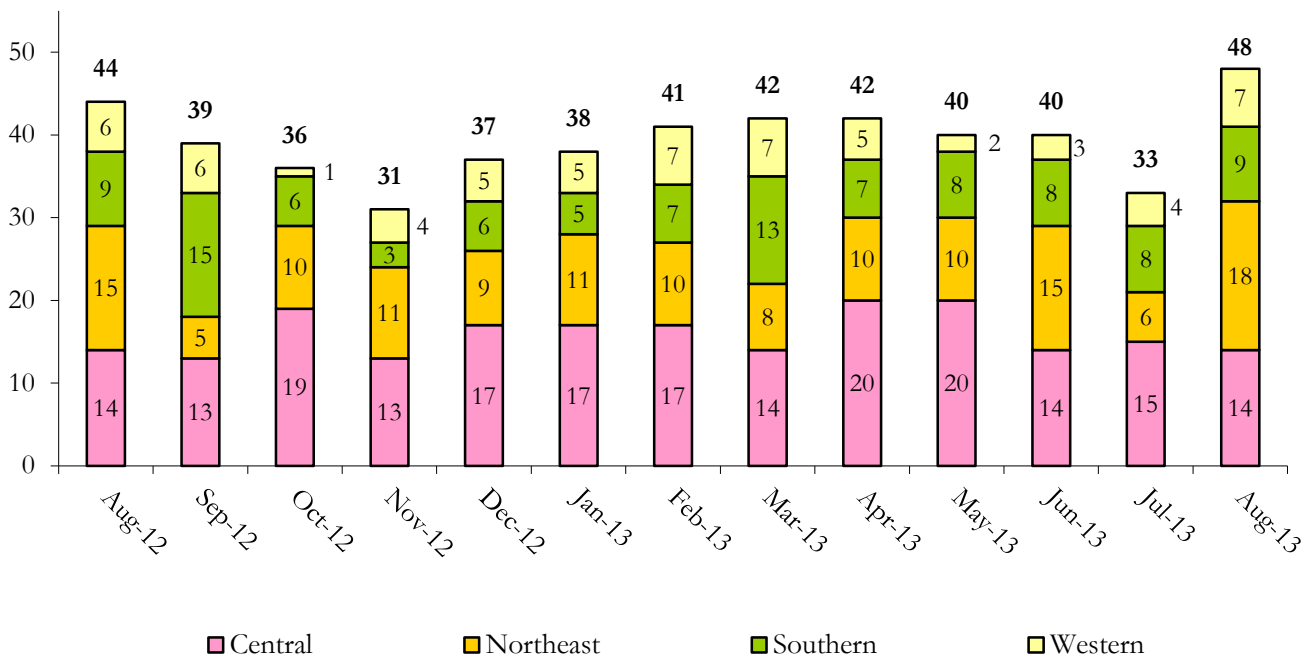
August 2013 DYC Population Report

IV. Commitment ADP and New Commitments

COMMITMENT ADP			
Region	Monthly		YTD
	August	% Change	
<i>Central Region</i>	332.6	-0.2%	333.5
<i>Northeast Region</i>	205.2	1.1%	205.1
<i>Southern Region</i>	156.7	0.6%	157.4
<i>Western Region</i>	101.2	0.9%	99.3
Commitment ADP Total	795.7	0.4%	795.2

NEW COMMITMENTS					
	FY 13-14		FY 12-13		% Change from last YTD
	August	YTD	August	YTD	
<i>Central Region</i>	14	29	14	32	-9.4%
<i>Northeast Region</i>	18	25	15	25	0.0%
<i>Southern Region</i>	9	18	9	18	0.0%
<i>Western Region</i>	7	11	6	9	22.2%
TOTAL	48	83	44	84	-1.2%

Monthly New Commitments



August 2013 DYC Population Report

V. Parole Services

PAROLE ADP				
Region	Monthly	YTD		% Change fm prev YTD
		FY 13-14	FY 12-13	
<i>Central Region</i>	120.3	121.7	167.0	-27.2%
<i>Northeast Region</i>	75.9	78.6	117.3	-33.0%
<i>Southern Region</i>	61.1	59.9	71.8	-16.6%
<i>Western Region</i>	16.9	18.0	32.7	-45.0%
Total	274.2	278.1	388.9	-28.5%

Parole Intakes			Parole Discharges		
By Region	Monthly	YTD	Monthly	YTD	LOS
<i>Central Region</i>	14	30	21	41	6.4
<i>Northeast Region</i>	9	19	17	35	5.9
<i>Southern Region</i>	9	22	10	17	5.5
<i>Western Region</i>	5	6	3	10	8.2
Total	37	77	51	103	6.2

Monthly Parole ADP

