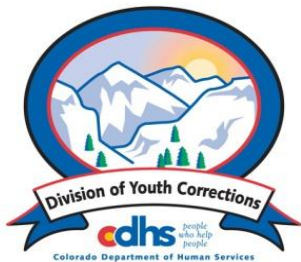


# JULY 2013 MONTHLY POPULATION REPORT FY 2013 - 2014

---

Prepared by the Division of Youth Corrections  
(DYC)  
Research and Evaluation Unit  
September 4, 2013



Colorado Department of Human Services  
Division of Youth Corrections

---

Working with Colorado Communities to Achieve Justice

# July 2013 DYC Population Report

<b>I. Summary Population Data</b>	<b>1</b>
<b>II. Detention ADP by Facility</b>	<b>2</b>
<b>III. Commitment Services</b>	
A. State and Contract ADP by Facility	3
B. Community/Other Residential ADP by Facility	4
<b>IV. Commitment ADP and New Commitments by Region</b>	<b>5</b>
<b>V. Parole Services</b>	<b>6</b>





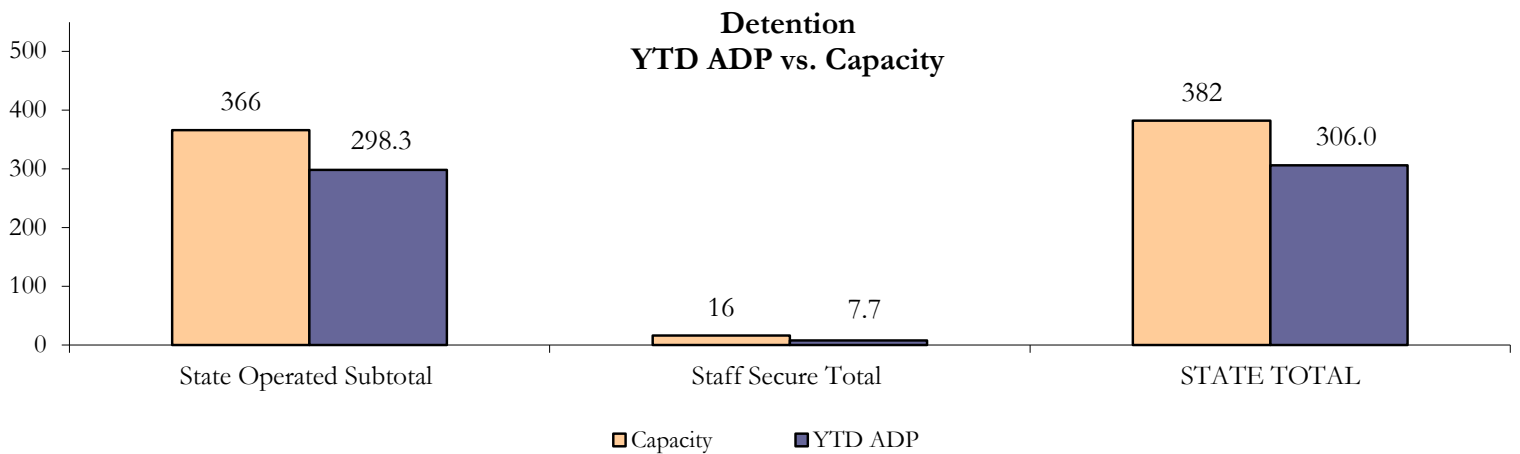
# July 2013 DYC Population Report

## II. Detention ADP by Facility

State Operated Detention							
Facility	Operating Capacity	Average Daily Population			New Admissions		LOS* (days)
		Monthly	YTD	YTD % of Cap	Monthly	YTD	YTD
Adams	30	23.9	23.9	79.8%	35	35	22.1
Gilliam	64	55.4	55.4	86.6%	103	103	16.3
Grand Mesa	27	19.5	19.5	72.3%	32	32	14.3
Marvin Foote	61	46.0	46.0	75.5%	117	117	16.1
Mount View	41	32.3	32.3	78.7%	73	73	9.6
Platte Valley	64	50.3	50.3	78.5%	116	116	9.9
Pueblo	28	24.2	24.2	86.4%	43	43	20.0
Spring Creek	51	46.7	46.7	91.5%	62	62	16.7
<b>State Subtotal</b>	<b>366</b>	<b>298.3</b>	<b>298.3</b>	<b>81.5%</b>	<b>581</b>	<b>581</b>	<b>15.0</b>

Staff Secure Detention							
Facility	Operating Capacity	Average Daily Population			New Admissions		LOS* (days)
		Monthly	YTD	YTD % of Cap	Monthly	YTD	YTD
Brown Center	3	0.0	0.0	0.0%	0	0	0.0
Robert DeNier	9	6.4	6.4	70.9%	6	6	13.3
Youthtrack San Luis Valley	4	1.3	1.3	32.9%	2	2	19.0
<b>Staff Secure Subtotal</b>	<b>16</b>	<b>7.7</b>	<b>7.7</b>	<b>48.1%</b>	<b>8</b>	<b>8</b>	<b>15.7</b>

STATEWIDE TOTAL							
	Operating Capacity	Average Daily Population			New Admissions		LOS* (days)
		Monthly	YTD	YTD % of Cap	Monthly	YTD	YTD
<b>Total Detention</b>	<b>382</b>	<b>306.0</b>	<b>306.0</b>	<b>80.1%</b>	<b>589</b>	<b>589</b>	<b>15.0</b>



*\*Important Note: Length of Stay figures should be cautiously interpreted during the first few months of a new Fiscal Year due to the small number of total discharges/ releases in the beginning of the fiscal year. LOS figures become more reliable as the number of discharged/ released youth accumulates over the course of the FY.*

# July 2013 DYC Population Report

## III. Commitment Services

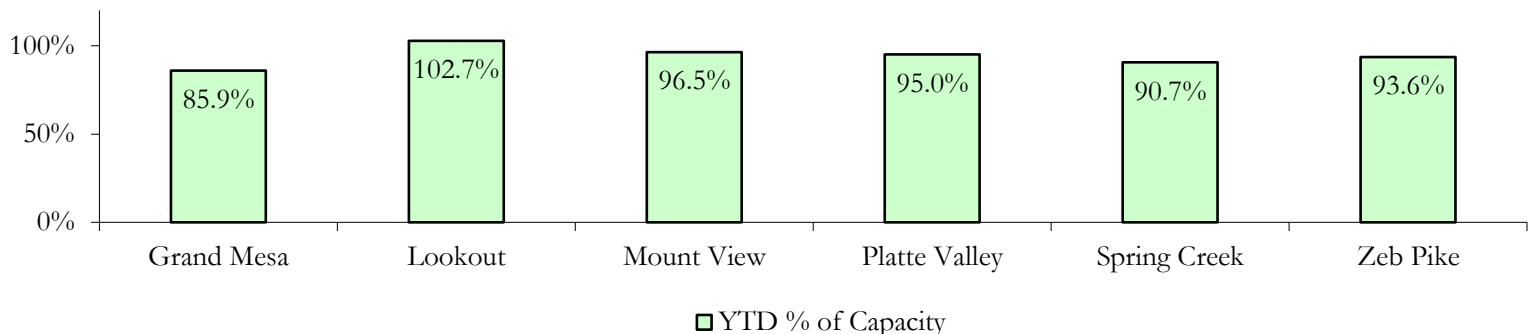
### A. State and Contract ADP by Facility

STATE SECURE					
<i>Facility</i>		ADP		Capacity	
		State Secure		Design	
		Monthly	YTD	Capacity	% of YTD
	<i>Adams*</i>	0.2	0.2	-	-
	<i>Gilliam*</i>	0.2	0.2	-	-
	Grand Mesa	34.3	34.3	40	85.9%
	Lookout	133.6	133.6	130	102.7%
	<i>Marvin Foote*</i>	0.3	0.3	-	-
	Mount View	48.2	48.2	50	96.5%
	Platte Valley	37.1	37.1	39	95.0%
	<i>Pueblo*</i>	0.4	0.4	-	-
	Spring Creek	26.3	26.3	29	90.7%
	Zeb Pike	33.7	33.7	36	93.6%
	<b>Assessment Total</b>	<b>30.5</b>	<b>30.5</b>	-	
	<b>Secure Total</b>	<b>283.7</b>	<b>283.7</b>	-	
	<b>GRAND TOTAL</b>	<b>314.2</b>	<b>314.2</b>	<b>324</b>	<b>97.0%</b>

*\*Detention only facilities with commitment ADP due to committed youth being held in detention prior to transfer.*

CONTRACT + STAFF SUPERVISED		
<i>Facility/Program</i>	ADP	
	Monthly	YTD
Alternative Homes For Youth - Greeley	12.3	12.3
Betty K. Marler Center	39.1	39.1
Brown Center	5.2	5.2
Childrens Ark at Pueblo	7.7	7.7
Devereux Cleo Wallace	21.8	21.8
Gateway Residential Program - Delta	6.0	6.0
Hilltop (Residential Youth Services)	2.7	2.7
Jefferson Hills - Aurora	42.0	42.0
Mountain Crest/Poudre Valley Health System	9.7	9.7
Ridge View	174.1	174.1
Robert DeNier	13.1	13.1
Southern Peaks	13.3	13.3
Third Way Center - Lowry	11.7	11.7
<b>TOTAL</b>	<b>358.7</b>	<b>358.7</b>

**State Secure Commitment  
Percent of Design Capacity by Facility**



# July 2013 DYC Population Report

## III. Commitment Services Continued

### B. Community/Other Residential ADP by Facility

<b>COMMUNITY RESIDENTIAL</b>		
	<i>Monthly</i>	<i>YTD</i>
Ariel Clinical Services	1.0	1.0
Community Corrections: Comcor	1.0	1.0
Community Corrections: Mesa County	5.4	5.4
Community Corrections and Work Release	1.0	1.0
Dale House Project	11.4	11.4
Denver Area Youth Services (DAYS)	1.1	1.1
Gateway Residential Program - Grand Junction	2.0	2.0
Griffith Centers (SR)	5.8	5.8
Job Corps	1.6	1.6
Kids Crossing	2.1	2.1
Mt Evans Qualifying House	9.6	9.6
Savio House	2.0	2.0
Summit Treatment Service, Inc	10.0	10.0
Synergy Administration	6.7	6.7
Third Way Center	4.4	4.4
Third Way Center, Pontiac	4.7	4.7
Third Way Center, York	11.2	11.2
Third Way Center, Lincoln	13.3	13.3
Turning Point Center, Prospect	3.0	3.0
Turning Point, Mathews St.	6.0	6.0
Whimspire Child Placement	1.5	1.5
Youthtrack, San Luis Valley	2.6	2.6
Youthtrack, Work and Learn	6.8	6.8
<i>Community Subtotal</i>	<i>114.3</i>	<i>114.3</i>

***Contract/Staff Supervised + Community Total    473.0       473.0***

<b>OTHER RESIDENTIAL</b>		
	<i>Monthly</i>	<i>YTD</i>
CMHI-Ft. Logan	0.2	0.2
Other Mental Health Facility	1.0	1.0
Residential Mental Health Program	3.0	3.0
Residential Work Program	1.4	1.4
<i>Other Residential Total*</i>	<i>5.3</i>	<i>5.3</i>

<b>RESIDENTIAL TOTAL</b>		
	<b>792.5</b>	<b>792.5</b>

*\*Due to the relatively few youth referred to these types of placements, Other Residential Totals may not add to the sum of the individual placements due to rounding errors and the method by which ADP is calculated.*

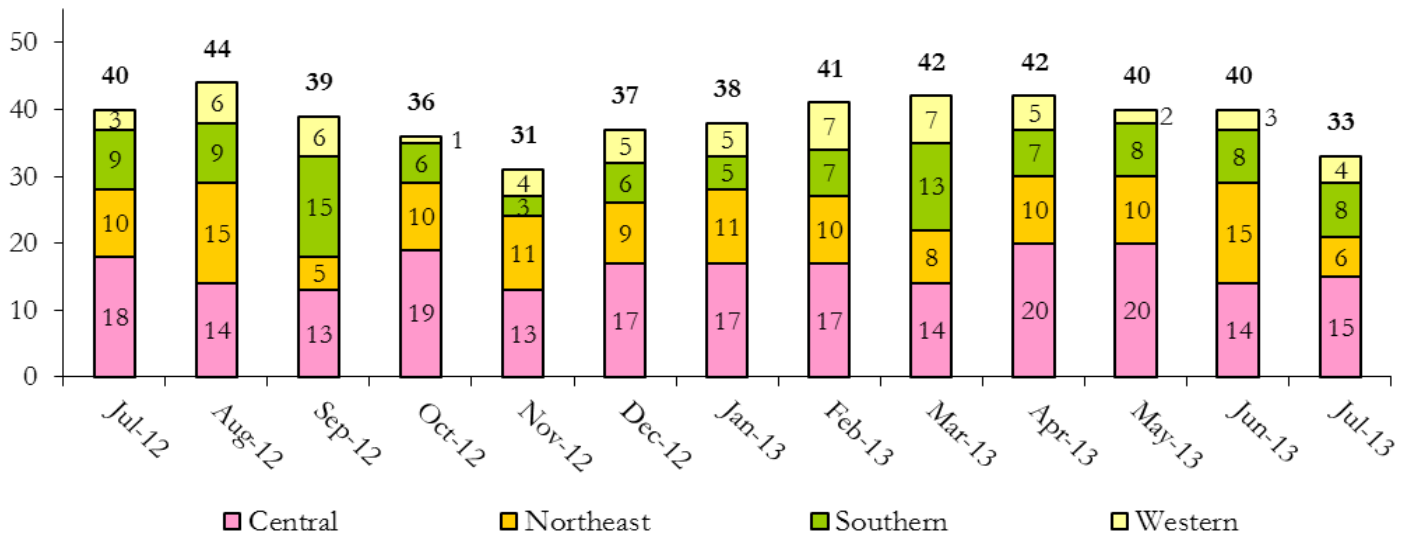
# July 2013 DYC Population Report

## IV. Commitment ADP and New Commitments

COMMITMENT ADP			
Region	Monthly		YTD
	July	% Change	
<i>Central Region</i>	333.4	-2.9%	333.4
<i>Northeast Region</i>	203.0	-1.4%	203.0
<i>Southern Region</i>	155.7	-3.1%	155.7
<i>Western Region</i>	100.3	-3.8%	100.3
<b>Commitment ADP Total</b>	<b>792.5</b>	<b>-2.7%</b>	<b>792.5</b>

NEW COMMITMENTS					
	FY 13-14		FY 12-13		% Change from last YTD
	July	YTD	July	YTD	
<i>Central Region</i>	15	15	18	18	-16.7%
<i>Northeast Region</i>	6	6	10	10	-40.0%
<i>Southern Region</i>	8	8	9	9	-11.1%
<i>Western Region</i>	4	4	3	3	33.3%
<b>TOTAL</b>	<b>33</b>	<b>33</b>	<b>40</b>	<b>40</b>	<b>-17.5%</b>

### Monthly New Commitments



# July 2013 DYC Population Report

## V. Parole Services

PAROLE ADP				
Region	Monthly	YTD		% Change fm prev YTD
		FY 13-14	FY 12-13	
<i>Central Region</i>	123.9	123.9	170.2	-27.2%
<i>Northeast Region</i>	81.4	81.4	113.6	-28.3%
<i>Southern Region</i>	59.0	59.0	67.8	-12.9%
<i>Western Region</i>	18.1	18.1	32.5	-44.4%
<b>Total</b>	<b>282.4</b>	<b>282.4</b>	<b>384.0</b>	<b>-26.5%</b>

Parole Intakes			Parole Discharges		
By Region	Monthly	YTD	Monthly	YTD	LOS
<i>Central Region</i>	16	16	20	20	6.0
<i>Northeast Region</i>	10	10	16	16	5.8
<i>Southern Region</i>	13	13	6	6	8.4
<i>Western Region</i>	1	1	7	7	6.0
<b>Total</b>	<b>40</b>	<b>40</b>	<b>49</b>	<b>49</b>	<b>6.2</b>

