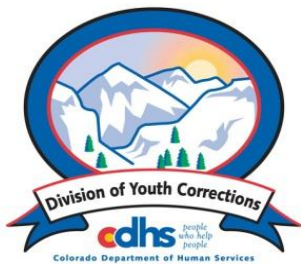


JUNE 2013 MONTHLY POPULATION REPORT FY 2012 - 2013

Prepared by the Division of Youth Corrections Research and Evaluation Unit, June 19, 2013



Colorado Department of Human Services

Division of Youth Corrections

Working with Colorado Communities to Achieve Justice

June 2013 DYC Population Report

I. Summary Population Data	1
II. Detention ADP by Facility	2
III. Commitment Services	
A. State and Contract ADP by Facility	3
B. Community/Other Residential ADP by Facility	4
IV. Commitment ADP and New Commitments by Region	5
V. Parole Services	6



June 2013 DYC Population Report

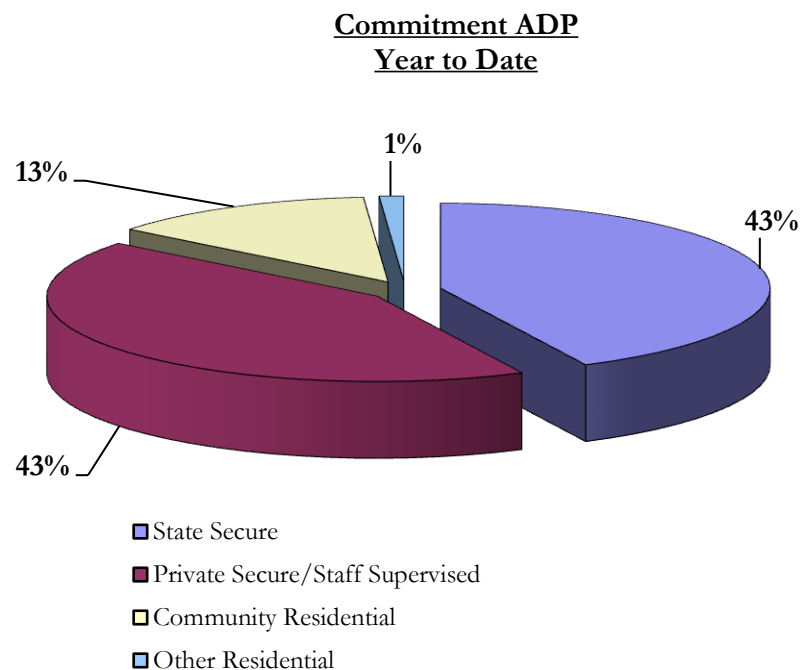
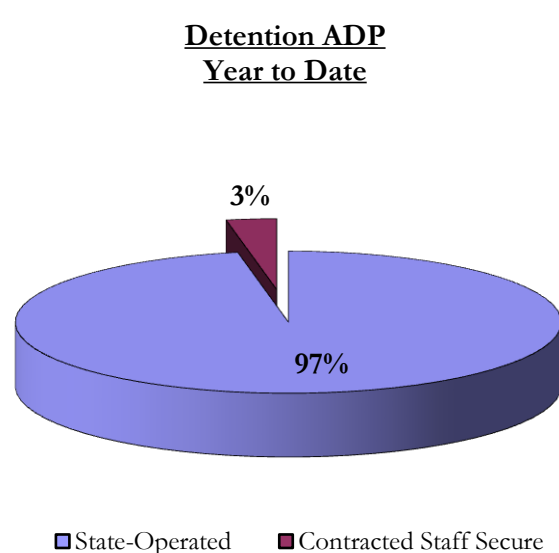
I. Summary Population Data*

DETAINED YOUTH				
	June 2013		YTD	
	ADP	% change	ADP	LOS
State-Operated	295.3	-8.1%	298.4	15.0 days
Contracted Staff Secure	7.8	7.6%	9.1	21.4 days
Total Detained	303.1	-7.8%	307.6	15.1 days

COMMITTED YOUTH				
	June 2013		YTD	
	ADP	% change	ADP	LOS
State Secure	336.4	-13.2%	364.0	9.5 months
Private Secure/Staff Supervised	356.5	-1.7%	365.1	6.9 months
Community Residential	115.7	1.9%	111.8	2.5 months
Other Residential	5.7	-24.1%	10.2	4.1 days
Total Committed Residential	814.3	-1.8%	851.0	19.1 months
<i>Committed Residential w/o Boulder</i>	<i>808.4</i>	<i>-1.7%</i>	<i>845.7</i>	-

PAROLE YOUTH				
	June 2013		YTD	
	ADP	% change	ADP	LOS
Parole	285.6	1.1%	331.6	6.8 months

TOTAL STATEWIDE ADP				
	June 2013		YTD	
	ADP	% change	ADP	LOS
DETENTION	303.1	-7.8%	307.6	15.1 days
COMMITMENT	814.3	-1.8%	851.0	19.1 months
PAROLE	285.6	1.1%	331.6	6.8 months
STATE TOTAL	1,402.9	-2.6%	1,490.3	N/A



*Due to rounding, totals shown may not be an exact sum of the subtotals

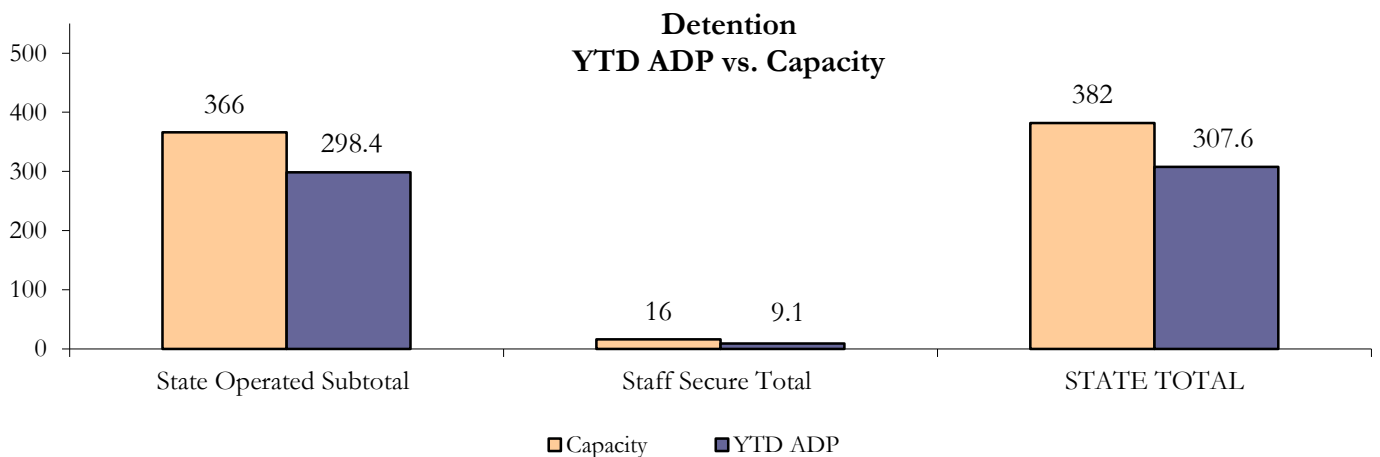
June 2013 DYC Population Report

II. Detention ADP by Facility

State Operated Detention							
Facility	Operating Capacity ¹	Average Daily Population			New Admissions		LOS (days)
		Monthly	YTD	YTD % of Cap ²	Monthly	YTD	YTD
Adams	30	21.9	20.0	72.5%	35	549	12.5
Gilliam	64	52.4	56.2	87.2%	68	1,062	18.9
Grand Mesa	27	21.1	21.1	73.8%	24	367	19.3
Marvin Foote	61	54.3	55.2	74.8%	87	1,272	15.9
Mount View	41	28.8	30.5	62.4%	59	832	13.3
Platte Valley	64	51.7	51.0	75.6%	116	1,434	13.1
Pueblo	28	26.0	18.0	61.8%	63	631	10.0
Spring Creek	51	39.0	46.4	81.2%	64	1,025	16.7
State Subtotal	366	295.3	298.4	75.1%	516	7,172	15.0

Staff Secure Detention							
Facility	Operating Capacity ¹	Average Daily Population			New Admissions		LOS (days)
		Monthly	YTD	YTD % of Cap ²	Monthly	YTD	YTD
Brown Center	3	0.7	1.4	44.3%	1	21	24.0
Robert DeNier	9	4.9	5.5	57.5%	6	84	22.1
Youthtrack San Luis Valley	4	2.2	2.2	60.3%	6	47	19.0
Staff Secure Subtotal	16	7.8	9.1	55.8%	13	152	21.4

STATEWIDE TOTAL							
	Operating Capacity ¹	Average Daily Population			New Admissions		LOS (days)
		Monthly	YTD	YTD % of Cap ²	Monthly	YTD	YTD
Total Detention	382	303.1	307.6	74.3%	529	7,324	15.1



¹ New Detention Capacities took effect April 1, 2013 (statewide decrease from 422 to 382)

² Figures for YTD % of Capacity incorporate both capacities: 422 (Jul-Mar) and 382 (Apr-current)

June 2013 DYC Population Report

III. Commitment Services

A. State and Contract ADP by Facility

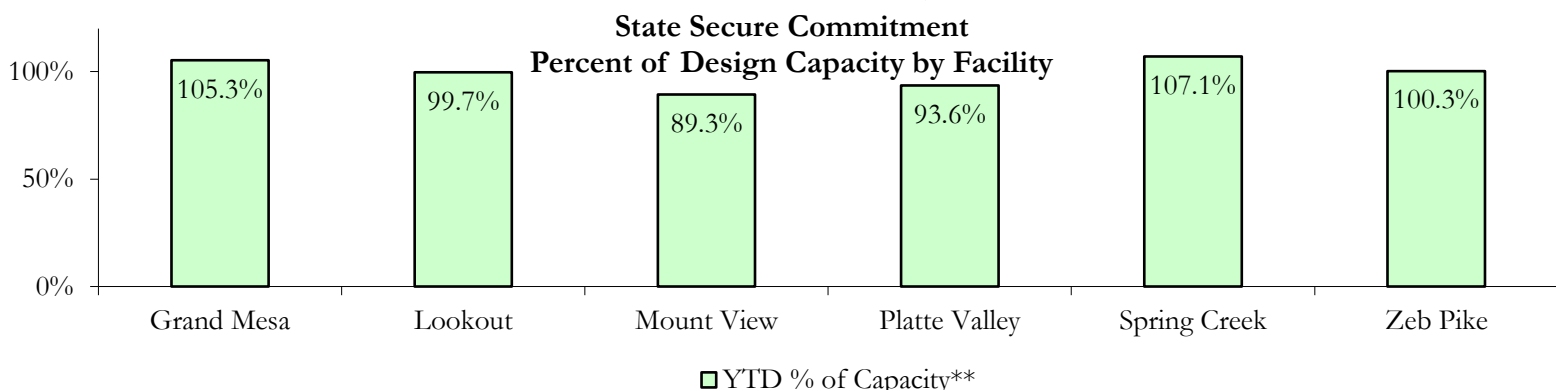
STATE SECURE				
Facility	ADP		Capacity	
	State Secure		Design	
	Monthly	YTD	Capacity	% of YTD**
<i>Adams*</i>	1.6	0.5	N/A	N/A
<i>Gilliam*</i>	1.0	0.2	N/A	N/A
Grand Mesa	39.2	41.8	40	105.3%
Lookout	136.6	142.6	130	99.7%
<i>Marvin Foote*</i>	0.4	0.6	N/A	N/A
Mount View	50.1	55.7	50	89.3%
Platte Valley	43.2	47.5	39	93.6%
<i>Pueblo*</i>	0.1	0.8	N/A	N/A
Spring Creek	26.7	37.5	29	107.1%
Zeb Pike	37.4	36.7	36	100.3%
Assessment Total	29.1	31.6	-	
Secure Total	307.3	332.3	-	
GRAND TOTAL	336.4	364.0	324	98.7%

**Detention only facilities with commitment ADP due to committed youth being held in detention prior to commitment.*

***Figures for YTD % of Capacity incorporate both design capacities at 394 (Jul-Mar) and 324 (Apr-current)*

CONTRACT + STAFF SUPERVISED

Facility/Program	ADP	
	Monthly	YTD
Alternative Homes For Youth - Greeley	12.4	10.6
Betty K. Marler Center	37.9	39.9
Brown Center	2.9	1.8
Childrens Ark at Pueblo	8.4	6.8
Devereux Cleo Wallace	23.9	24.0
Gateway Residential Program - Delta	6.0	4.3
Hilltop (Residential Youth Services)	2.4	3.9
Jefferson Hills - Aurora	40.5	35.8
Mountain Crest/Poudre Valley Health System	7.2	7.2
Ridge View	176.2	193.2
Robert DeNier	13.2	12.5
Southern Peaks	14.5	14.5
Third Way Center - Lowry	11.0	10.7
TOTAL	356.5	365.1



June 2013 DYC Population Report

III. Commitment Services Continued B. Community/Other Residential ADP by Facility

COMMUNITY RESIDENTIAL		
	<i>Monthly</i>	<i>YTD</i>
Ariel Clinical Services	1.0	1.7
Community Corrections: Comcor	1.0	0.5
Community Corrections: Larimer	0.0	0.1
Community Corrections: Mesa County	4.9	1.9
Community Corrections and Work Release	0.8	0.2
Dale House Project	10.6	8.2
Denver Area Youth Services (DAYS)	1.3	0.8
Gateway Residential Program - Grand Junction	2.0	1.8
Griffith Centers (SR)	7.8	7.5
Griffith Centers - Chins Up	0.0	0.3
Job Corps	1.0	3.2
Kids Crossing	2.2	1.4
Lost and Found Inc. Arvada	0.0	0.6
Mt Evans Qualifying House	8.2	7.5
Reflections For Youth Inc., Grismore	0.2	0.4
Reflections For Youth Inc., Prairie View	0.0	0.4
Savio House	2.0	1.6
Summit Treatment Service, Inc	10.9	10.3
Synergy Administration	9.0	7.4
Third Way Center	5.8	6.0
Third Way Center, Pontiac	4.6	5.7
Third Way Center, York	11.7	10.0
Third Way Center, Lincoln	12.8	9.9
Turning Point Center, Prospect	3.0	3.4
Turning Point, Mathews St.	5.1	5.8
Whimspire Child Placement	1.7	1.7
Youthtrack, San Luis Valley	2.1	4.6
Youthtrack, Work and Learn	6.1	8.8
<i>Community Subtotal</i>	<i>115.7</i>	<i>111.8</i>

Contract/Staff Supervised + Community Total 472.2 476.9

OTHER RESIDENTIAL		
	<i>Monthly</i>	<i>YTD</i>
CMHI-Ft.Logan	0.4	0.2
CMHI-Pueblo	0.0	0.1
Hospital	0.0	0.2
Immigration Detention Facility	0.0	1.3
Job Corps Parole Program (Federally funded)	0.0	1.6
Other Mental Health Facility	1.5	1.6
Residential Drug/Alcohol Program	0.0	0.3
Residential Mental Health Program	3.9	1.4
Residential Work Program	1.0	0.2
Shelter Care (short term)	0.0	0.7
<i>Other Residential Total*</i>	<i>5.7</i>	<i>10.2</i>

RESIDENTIAL TOTAL	814.3	851.0
--------------------------	--------------	--------------

*Other Residential Total may not accurately sum due to Trails-related issues

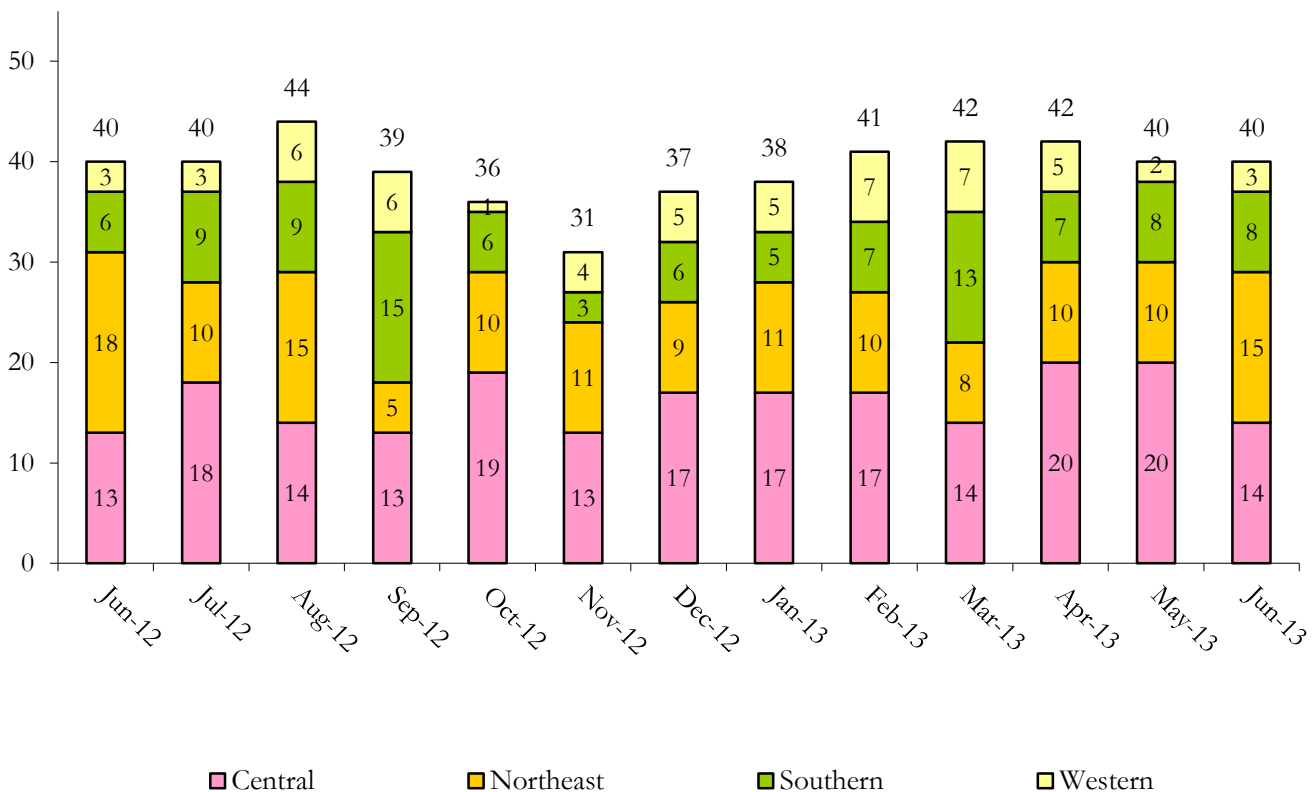
June 2013 DYC Population Report

IV. Commitment ADP and New Commitments

COMMITMENT ADP			
Region	Monthly		YTD
	June	% Change	
<i>Central Region</i>	343.4	-1.9%	360.1
<i>Northeast Region</i>	205.9	0.6%	216.6
<i>Southern Region</i>	160.6	-4.7%	174.2
<i>Western Region</i>	104.3	-1.1%	100.0
Commitment ADP Total	814.3	-1.8%	851.0

NEW COMMITMENTS					
	FY 12-13		FY 11-12		% Change from last YTD
	June	YTD	June	YTD	
<i>Central Region</i>	14	199	13	216	-7.9%
<i>Northeast Region</i>	15	132	18	159	-17.0%
<i>Southern Region</i>	8	99	6	106	-6.6%
<i>Western Region</i>	3	58	3	51	13.7%
TOTAL	40	488	40	532	-8.3%

Monthly New Commitments



June 2013 DYC Population Report

V. Parole Services

PAROLE ADP				
Region	Monthly	YTD		% Change fm prev YTD
		FY 12-13	FY 11-12	
<i>Central Region</i>	123.5	136.1	164.0	-17.0%
<i>Northeast Region</i>	86.7	99.0	97.4	1.6%
<i>Southern Region</i>	55.5	66.6	67.5	-1.4%
<i>Western Region</i>	19.9	30.0	34.5	-13.1%
Total	285.6	331.6	363.4	-8.7%

Parole Intakes			Parole Discharges		
By Region	Monthly	YTD	Monthly	YTD	LOS
<i>Central Region</i>	17	208	23	263	7.3
<i>Northeast Region</i>	10	155	12	184	6.7
<i>Southern Region</i>	10	117	5	140	6.2
<i>Western Region</i>	4	51	2	67	6.0
Total	41	531	42	654	6.8

