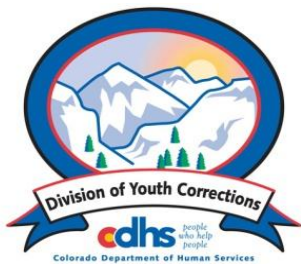


MAY 2013 MONTHLY POPULATION REPORT FY 2012 - 2013

Prepared by the Division of Youth Corrections Research and Evaluation Unit, June 19, 2013



Colorado Department of Human Services

Division of Youth Corrections

Working with Colorado Communities to Achieve Justice

May 2013 DYC Population Report

I. Summary Population Data	1
II. Detention ADP by Facility	2
III. Commitment Services	
A. State and Contract ADP by Facility	3
B. Community/Other Residential ADP by Facility	4
IV. Commitment ADP and New Commitments by Region	5
V. Parole Services	6



May 2013 DYC Population Report

I. Summary Population Data*

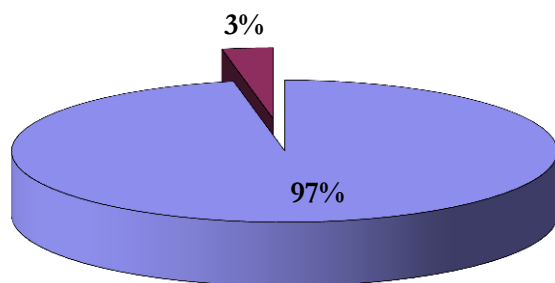
DETAINED YOUTH				
	May 2013		YTD	
	ADP	% change	ADP	LOS
State-Operated	321.4	4.3%	298.8	14.8 days
Contracted Staff Secure	7.2	-28.0%	9.3	22.0 days
Total Detained	328.6	3.3%	308.1	15.0 days

COMMITTED YOUTH				
	May 2013		YTD	
	ADP	% change	ADP	LOS
State Secure	344.9	-12.1%	366.4	9.7 months
Private Secure/Staff Supervised	362.8	-1.4%	365.8	6.7 months
Community Residential	113.6	1.1%	111.5	2.5 months
Other Residential	7.6	17.0%	10.6	4.4 days
Total Committed Residential	828.8	-0.6%	854.3	19.0 months
<i>Committed Residential w/o Boulder</i>	<i>822.3</i>	<i>-0.6%</i>	<i>849.6</i>	-

PAROLE YOUTH				
	May 2013		YTD	
	ADP	% change	ADP	LOS
Parole	282.4	-1.1%	335.4	6.7 months

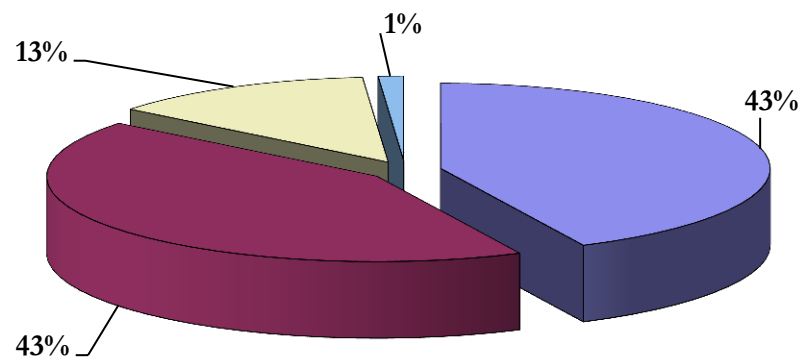
TOTAL STATEWIDE ADP				
	May 2013		YTD	
	ADP	% change	ADP	LOS
DETENTION	328.6	3.3%	308.1	15.0 days
COMMITMENT	828.8	-0.6%	854.3	19.0 months
PAROLE	282.4	-1.1%	335.4	6.7 months
STATE TOTAL	1,439.8	0.1%	1,497.8	N/A

Detention ADP
Year to Date



■ State-Operated ■ Contracted Staff Secure

Commitment ADP
Year to Date



■ State Secure
■ Private Secure/Staff Supervised
■ Community Residential
■ Other Residential

*Due to rounding, totals shown may not be an exact sum of the subtotals

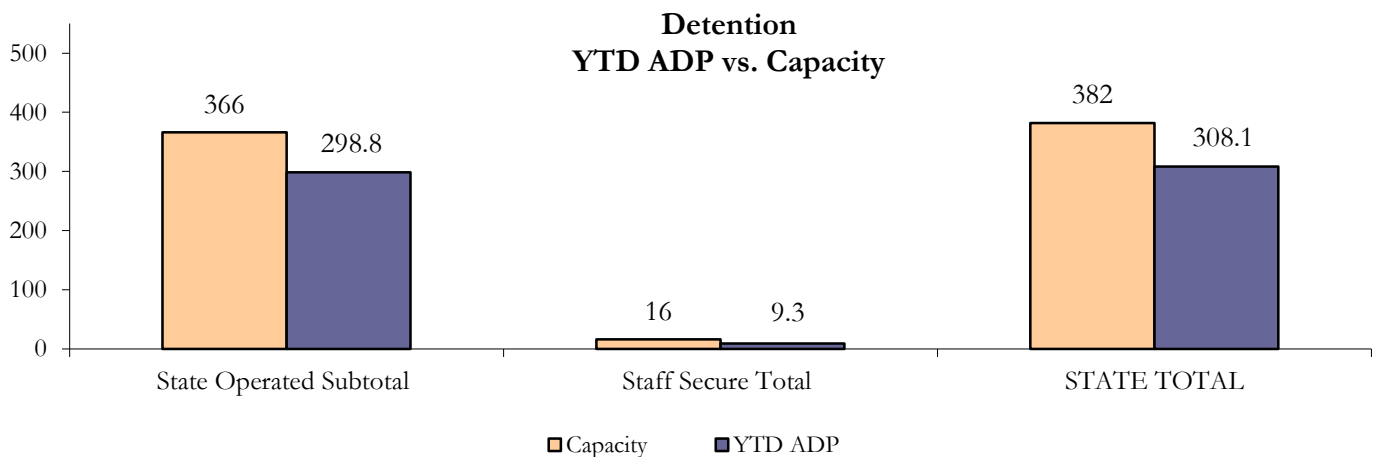
May 2013 DYC Population Report

II. Detention ADP by Facility

State Operated Detention							
Facility	Operating Capacity ¹	Average Daily Population			New Admissions		LOS (days)
		Monthly	YTD	YTD % of Cap ²	Monthly	YTD	YTD
Adams	30	25.1	20.0	73.0%	47	515	12.1
Gilliam	64	59.3	56.5	87.2%	109	994	18.6
Grand Mesa	27	21.7	21.1	73.3%	45	343	18.1
Marvin Foote	61	56.4	55.3	73.4%	136	1,185	15.9
Mount View	41	35.8	30.7	61.4%	65	773	13.1
Platte Valley	64	53.5	51.0	75.2%	138	1,320	13.2
Pueblo	28	24.7	17.3	61.1%	62	568	9.3
Spring Creek	51	44.9	47.0	80.6%	104	961	16.6
State Subtotal	366	321.4	298.8	74.5%	706	6,659	14.8

Staff Secure Detention							
Facility	Operating Capacity ¹	Average Daily Population			New Admissions		LOS (days)
		Monthly	YTD	YTD % of Cap ²	Monthly	YTD	YTD
Brown Center	3	1.6	1.4	44.5%	1	20	24.2
Robert DeNier	9	5.0	5.6	57.2%	6	78	22.4
Youthtrack San Luis Valley	4	0.7	2.2	60.7%	5	41	20.2
Staff Secure Subtotal	16	7.2	9.3	55.8%	12	139	22.0

STATEWIDE TOTAL							
	Operating Capacity ¹	Average Daily Population			New Admissions		LOS (days)
		Monthly	YTD	YTD % of Cap ²	Monthly	YTD	YTD
Total Detention	382	328.6	308.1	73.7%	718	6,798	15.0



¹ New Detention Capacities took effect April 1, 2013 (statewide decrease from 422 to 382 beds).

² Figures for YTD % of Capacity incorporate both capacities: 422 (Jul-Mar) and 382 (Apr-current)

May 2013 DYC Population Report

III. Commitment Services

A. State and Contract ADP by Facility

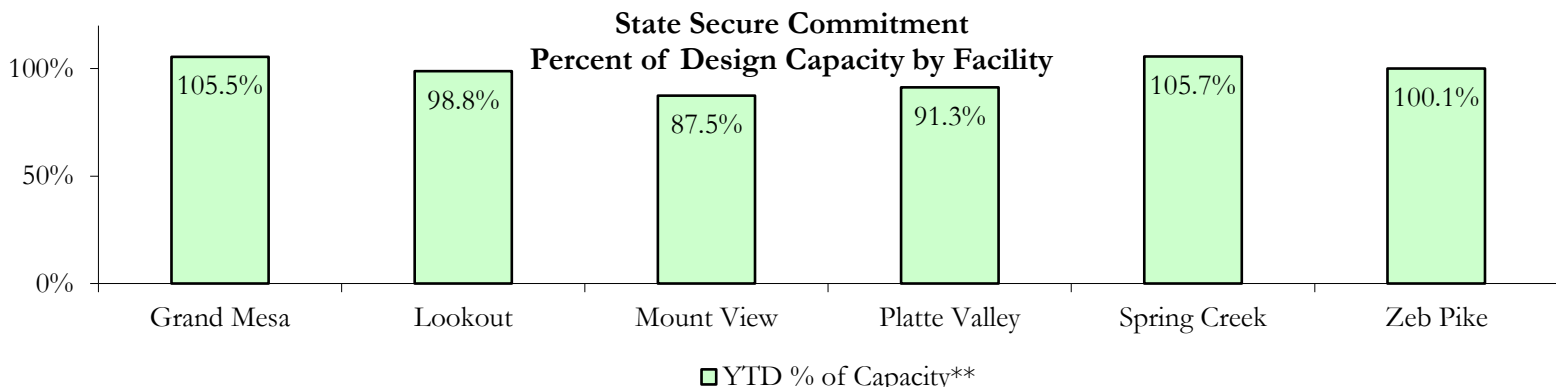
STATE SECURE				
Facility	ADP		Capacity	
	State Secure		Design	
	Monthly	YTD	Capacity	% of YTD**
<i>Adams*</i>	0.6	0.3	N/A	N/A
<i>Gilliam*</i>	1.4	0.2	N/A	N/A
Grand Mesa	40.2	42.1	40	105.5%
Lookout	136.6	143.2	130	98.8%
<i>Marvin Foote*</i>	0.2	0.6	N/A	N/A
Mount View	58.3	56.2	50	87.5%
Platte Valley	41.9	47.9	39	91.3%
<i>Pueblo*</i>	0.0	0.8	N/A	N/A
Spring Creek	26.3	38.5	29	105.7%
Zeb Pike	39.3	36.7	36	100.1%
Assessment Total	32.9	32.0	-	
Secure Total	312.0	334.3	-	
GRAND TOTAL	344.9	366.4	324	97.6%

**Detention only facilities with commitment ADP due to committed youth being held in detention prior to commitment.*

***Figures for YTD % of Capacity incorporate both design capacities at 394 (Jul-Mar) and 324 (Apr-current)*

CONTRACT + STAFF SUPERVISED

Facility/Program	ADP	
	Monthly	YTD
Alternative Homes For Youth - Greeley	13.4	10.4
Betty K. Marler Center	40.2	40.0
Brown Center	1.6	1.7
Childrens Ark at Pueblo	7.4	6.6
Devereux Cleo Wallace	25.4	24.0
Gateway Residential Program - Delta	5.1	4.1
Hilltop (Residential Youth Services)	4.0	4.0
Jefferson Hills - Aurora	39.6	35.3
Mountain Crest/Poudre Valley Health System	7.5	7.2
Ridge View	180.7	194.8
Robert DeNier	13.3	12.4
Southern Peaks	13.9	14.5
Third Way Center - Lowry	10.7	10.6
TOTAL	362.8	365.8



May 2013

DYC Population Report

III. Commitment Services Continued

B. Community/Other Residential ADP by Facility

COMMUNITY RESIDENTIAL		
	<i>Monthly</i>	<i>YTD</i>
Ariel Clinical Services	1.0	1.7
Community Corrections: Comcor	1.0	0.5
Community Corrections: Larimer	0.0	0.1
Community Corrections: Mesa County	4.3	1.6
Community Corrections and Work Release	1.0	0.2
Dale House Project	8.7	8.0
Denver Area Youth Services (DAYS)	1.0	0.8
Gateway Residential Program - Grand Junction	3.0	1.8
Griffith Centers (SR)	8.4	7.5
Griffith Centers - Chins Up	0.0	0.4
Job Corps	1.6	3.4
Kids Crossing	2.0	1.3
Lost and Found Inc. Arvada	0.0	0.6
Mt Evans Qualifying House	5.6	7.4
Reflections For Youth Inc., Grismore	1.0	0.4
Reflections For Youth Inc., Prairie View	0.0	0.5
Savio House	2.8	1.6
Summit Treatment Service, Inc	11.3	10.3
Synergy Administration	8.9	7.2
Third Way Center	6.0	6.1
Third Way Center, Pontiac	5.8	5.8
Third Way Center, York	10.6	9.9
Third Way Center, Lincoln	10.3	9.6
Turning Point Center, Prospect	3.0	3.4
Turning Point, Mathews St.	4.0	5.8
Whimspire Child Placement	2.0	1.7
Youthtrack, San Luis Valley	3.1	4.8
Youthtrack, Work and Learn	7.1	9.0
<i>Community Subtotal</i>	<i>113.6</i>	<i>111.5</i>

Contract/Staff Supervised + Community Total 476.4 477.3

OTHER RESIDENTIAL		
	<i>Monthly</i>	<i>YTD</i>
CMHI-Ft.Logan	0.0	0.2
CMHI-Pueblo	0.0	0.2
Hospital	0.9	0.3
Immigration Detention Facility	1.1	1.5
Job Corps Parole Program (Federally funded)	0.0	1.8
Other Mental Health Facility	1.6	1.7
Residential Drug/Alcohol Program	0.2	0.3
Residential Mental Health Program	2.7	1.1
Residential Work Program	1.0	0.1
Shelter Care (short term)	0.3	0.8
<i>Other Residential Total*</i>	<i>7.6</i>	<i>10.6</i>

RESIDENTIAL TOTAL	828.8	854.3
--------------------------	--------------	--------------

*Other Residential Total may not accurately sum due to Trails-related issues

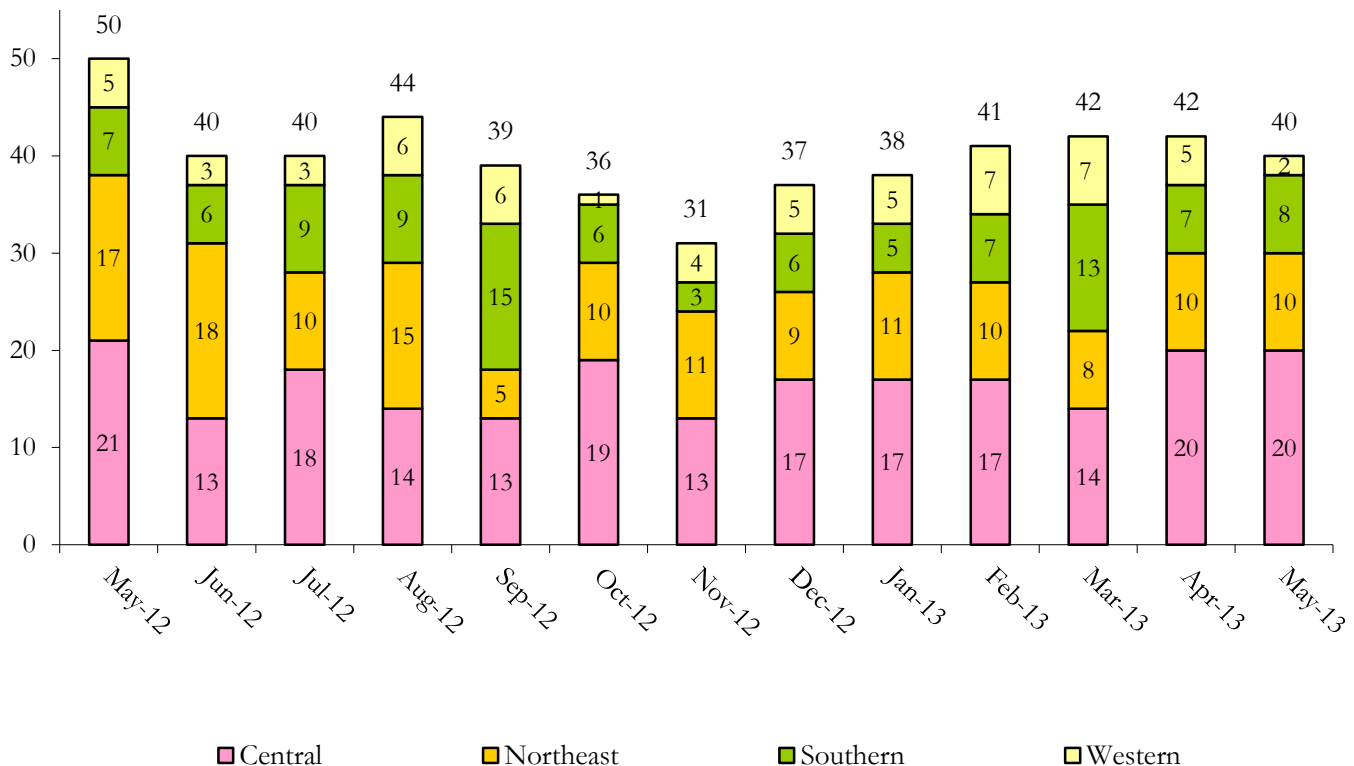
May 2013 DYC Population Report

IV. Commitment ADP and New Commitments

COMMITMENT ADP			
Region	Monthly		YTD
	May	% Change	
<i>Central Region</i>	350.2	1.1%	362.7
<i>Northeast Region</i>	204.6	-1.6%	217.6
<i>Southern Region</i>	168.5	-3.2%	174.5
<i>Western Region</i>	105.5	-0.1%	99.6
Commitment ADP Total	828.8	-0.6%	854.3

NEW COMMITMENTS					
	FY 12-13		FY 11-12		% Change from last YTD
	May	YTD	May	YTD	
<i>Central Region</i>	20	185	21	198	-6.6%
<i>Northeast Region</i>	10	116	17	142	-18.3%
<i>Southern Region</i>	8	91	7	100	-9.0%
<i>Western Region</i>	2	55	5	47	17.0%
TOTAL	40	447	50	487	-8.2%

Monthly New Commitments



May 2013 DYC Population Report

V. Parole Services

PAROLE ADP				
Region	Monthly	YTD		% Change fm prev YTD
		FY 12-13	FY 11-12	
<i>Central Region</i>	130.0	137.1	164.0	-16.4%
<i>Northeast Region</i>	82.7	99.8	96.8	3.1%
<i>Southern Region</i>	50.1	67.6	67.3	0.4%
<i>Western Region</i>	19.5	30.9	34.8	-11.3%
Total	282.4	335.4	363.0	-7.6%

Parole Intakes			Parole Discharges		
By Region	Monthly	YTD	Monthly	YTD	LOS
<i>Central Region</i>	14	191	21	240	7.2
<i>Northeast Region</i>	17	144	9	172	6.7
<i>Southern Region</i>	9	107	13	135	6.3
<i>Western Region</i>	5	47	3	65	5.9
Total	45	489	46	612	6.7

