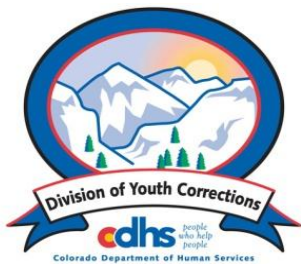


# APRIL 2013 MONTHLY POPULATION REPORT FY 2012 - 2013

---

Prepared by the Division of Youth Corrections Research and Evaluation Unit, May 24, 2013



Colorado Department of Human Services

Division of Youth Corrections

---

Working with Colorado Communities to Achieve Justice

# April 2013 DYC Population Report

<b>I. Summary Population Data</b>	<b>1</b>
<b>II. Detention ADP by Facility</b>	<b>2</b>
<b>III. Commitment Services</b>	
A. State and Contract ADP by Facility	3
B. Community/Other Residential ADP by Facility	4
<b>IV. Commitment ADP and New Commitments by Region</b>	<b>5</b>
<b>V. Parole Services</b>	<b>6</b>



# April 2013 DYC Population Report

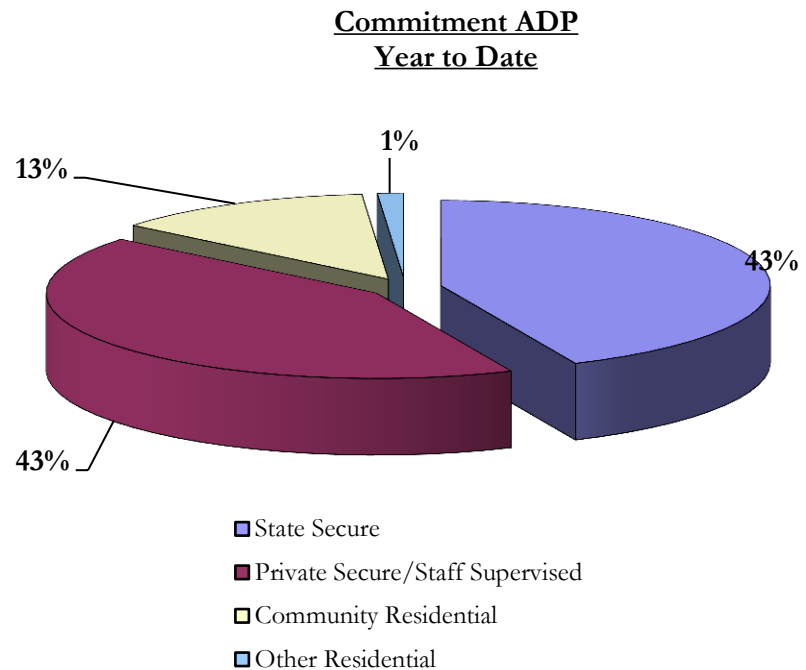
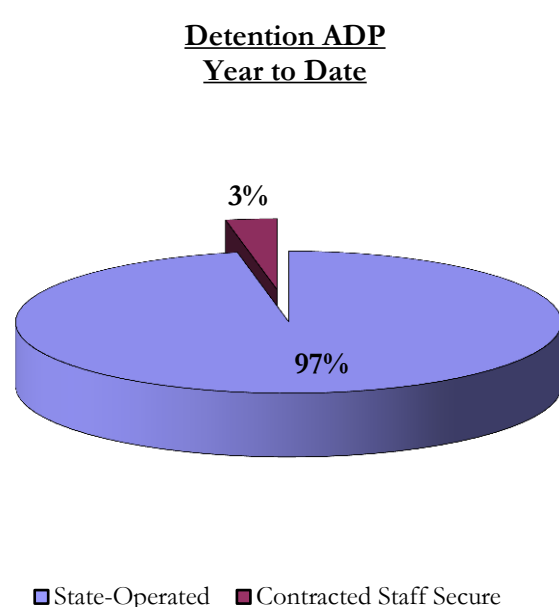
## I. Summary Population Data\*

DETAINED YOUTH				
	April 2013		YTD	
	ADP	% change	ADP	LOS
State-Operated	308.2	3.3%	296.4	14.9 days
Contracted Staff Secure	10.0	-10.2%	9.5	22.2 days
<b>Total Detained</b>	<b>318.3</b>	<b>2.8%</b>	<b>305.9</b>	<b>15.0 days</b>

COMMITTED YOUTH				
	April 2013		YTD	
	ADP	% change	ADP	LOS
State Secure	347.2	0.0%	368.7	9.8 months
Private Secure/Staff Supervised	368.1	1.4%	366.8	6.5 months
Community Residential	112.4	1.0%	110.9	2.5 months
Other Residential	6.5	-22.6%	10.3	4.0 days
<b>Total Committed Residential</b>	<b>834.1</b>	<b>0.3%</b>	<b>856.7</b>	<b>19.0 months</b>
<i>Committed Residential w/o Boulder</i>	<i>827.6</i>	<i>0.3%</i>	<i>852.0</i>	-

PAROLE YOUTH				
	April 2013		YTD	
	ADP	% change	ADP	LOS
Parole	285.4	-6.7%	338.1	6.7 months

TOTAL STATEWIDE ADP				
	April 2013		YTD	
	ADP	% change	ADP	LOS
<b>DETENTION</b>	<b>318.3</b>	<b>2.8%</b>	<b>305.9</b>	<b>15.0 days</b>
<b>COMMITMENT</b>	<b>834.1</b>	<b>0.3%</b>	<b>856.7</b>	<b>19.0 months</b>
<b>PAROLE</b>	<b>285.4</b>	<b>-6.7%</b>	<b>338.1</b>	<b>6.7 months</b>
<b>STATE TOTAL</b>	<b>1,437.8</b>	<b>-0.6%</b>	<b>1,500.8</b>	<b>N/A</b>



\*Due to rounding, totals shown may not be an exact sum of the subtotals

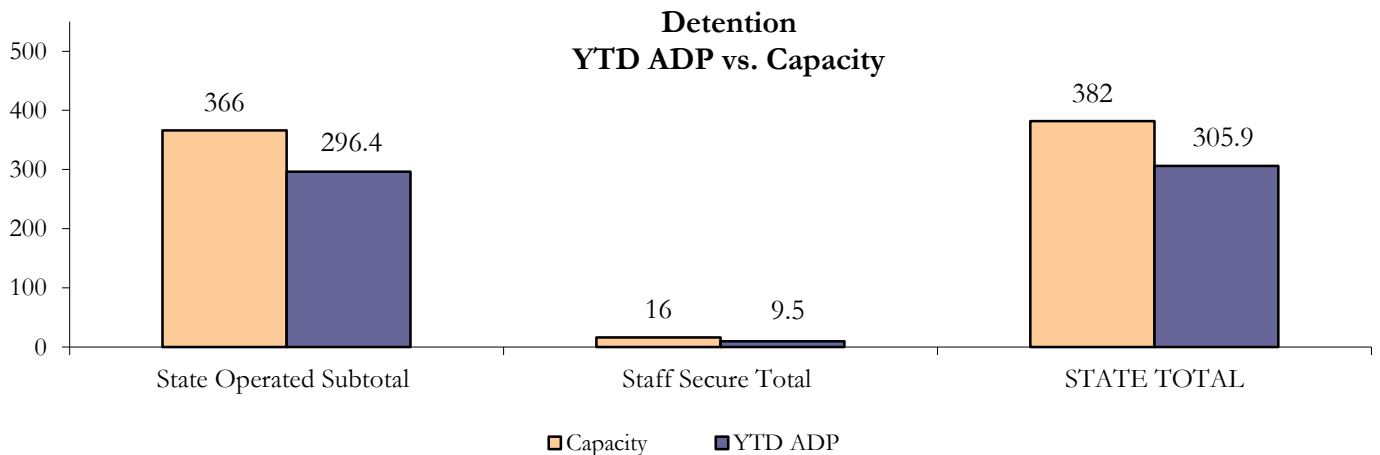
# April 2013 DYC Population Report

## II. Detention ADP by Facility

State Operated Detention							
Facility	Operating Capacity <sup>1</sup>	Average Daily Population			New Admissions		LOS (days)
		Monthly	YTD	YTD % of Cap <sup>2</sup>	Monthly	YTD	YTD
Adams	30	27.0	19.4	73.4%	36	468	11.6
Gilliam	64	59.1	56.0	87.1%	102	885	18.8
Grand Mesa	27	22.2	21.1	72.8%	31	298	19.2
Marvin Foote	61	51.1	55.2	71.6%	125	1,049	16.3
Mount View	41	33.8	30.2	59.9%	76	708	13.0
Platte Valley	64	47.6	50.7	74.7%	105	1,182	13.0
Pueblo	28	22.2	16.5	60.8%	76	506	9.4
Spring Creek	51	45.2	47.3	79.4%	83	857	16.9
<b>State Subtotal</b>	<b>366</b>	<b>308.2</b>	<b>296.4</b>	<b>73.7%</b>	<b>634</b>	<b>5,953</b>	<b>14.9</b>

Staff Secure Detention							
Facility	Operating Capacity <sup>1</sup>	Average Daily Population			New Admissions		LOS (days)
		Monthly	YTD	YTD % of Cap <sup>2</sup>	Monthly	YTD	YTD
Brown Center	3	2.5	1.4	44.1%	2	19	21.0
Robert DeNier	9	6.2	5.7	56.8%	9	72	22.7
Youthtrack San Luis Valley	4	1.3	2.4	61.7%	2	36	21.6
<b>Staff Secure Subtotal</b>	<b>16</b>	<b>10.0</b>	<b>9.5</b>	<b>55.7%</b>	<b>13</b>	<b>127</b>	<b>22.2</b>

STATEWIDE TOTAL							
	Operating Capacity <sup>1</sup>	Average Daily Population			New Admissions		LOS (days)
		Monthly	YTD	YTD % of Cap <sup>2</sup>	Monthly	YTD	YTD
<b>Total Detention</b>	<b>382</b>	<b>318.3</b>	<b>305.9</b>	<b>73.0%</b>	<b>647</b>	<b>6,080</b>	<b>15.0</b>



<sup>1</sup> New Detention Capacities took effect April 1, 2013 (statewide decrease from 422 to 382)

<sup>2</sup> Figures for YTD % of Capacity incorporate both capacities: 422 (Jul-Mar) and 382 (Apr-current)

# April 2013 DYC Population Report

## III. Commitment Services

### A. State and Contract ADP by Facility

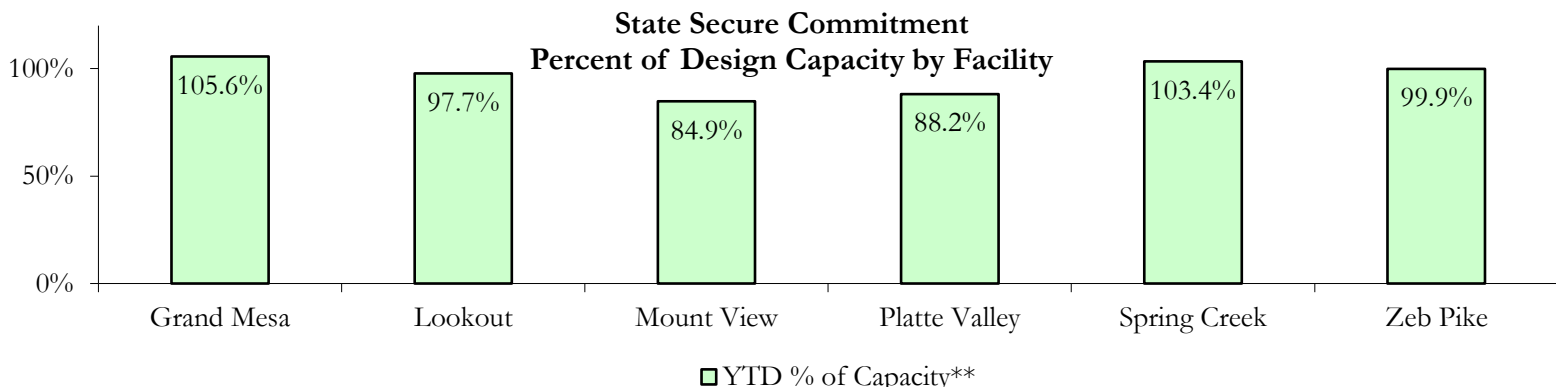
STATE SECURE				
Facility	ADP		Capacity	
	State Secure		Design	
	Monthly	YTD	Capacity	% of YTD**
Adams*	0.0	0.3	N/A	N/A
Gilliam*	0.1	0.2	N/A	N/A
Grand Mesa	43.0	42.2	40	105.6%
Lookout	137.7	143.9	130	97.7%
Marvin Foote*	0.4	0.6	N/A	N/A
Mount View	51.0	56.0	50	84.9%
Platte Valley	45.4	48.5	39	88.2%
Pueblo*	0.0	0.9	N/A	N/A
Spring Creek	28.9	39.7	29	103.4%
Zeb Pike	40.8	36.4	36	99.9%
<b>Assessment Total</b>	<b>37.8</b>	<b>33.0</b>	-	-
<b>Secure Total</b>	<b>309.4</b>	<b>335.7</b>	-	-
<b>GRAND TOTAL</b>	<b>347.2</b>	<b>368.7</b>	<b>324</b>	<b>96.1%</b>

\*Detention only facilities with commitment ADP due to committed youth being held in detention prior to commitment.

\*\*Figures for YTD % of Capacity incorporate both design capacities at 394 (Jul-Mar) and 324 (Apr-current)

### CONTRACT + STAFF SUPERVISED

Facility/Program	ADP	
	Monthly	YTD
Alternative Homes For Youth - Greeley	15.7	10.1
Betty K. Marler Center	40.4	40.0
Brown Center	2.4	2.2
Childrens Ark at Pueblo	7.0	6.5
Devereux Cleo Wallace	24.6	23.9
Gateway Residential Program - Delta	4.9	4.0
Hilltop (Residential Youth Services)	4.6	4.0
Jefferson Hills - Aurora	38.2	34.9
Mountain Crest/Poudre Valley Health System	8.3	7.2
Ridge View	185.8	196.3
Robert DeNier	11.2	12.4
Southern Peaks	12.7	14.6
Third Way Center - Lowry	12.1	10.7
<b>TOTAL</b>	<b>368.1</b>	<b>366.8</b>



# April 2013

## DYC Population Report

### III. Commitment Services Continued

#### B. Community/Other Residential ADP by Facility

<b>COMMUNITY RESIDENTIAL</b>		
	<i>Monthly</i>	<i>YTD</i>
Ariel Clinical Services	1.0	1.6
Community Corrections: Comcor	1.0	0.4
Community Corrections: Larimer	0.0	0.1
Community Corrections: Mesa County	4.0	1.4
Dale House Project	7.9	8.0
Denver Area Youth Services (DAYS)	0.4	0.8
Gateway Residential Program - Grand Junction	3.0	1.7
Griffith Centers (SR)	9.1	7.4
Griffith Centers - Chins Up	0.5	0.4
Job Corps	2.5	3.6
Kids Crossing	2.0	1.3
Lost and Found Inc. Arvada	0.0	0.7
Mt Evans Qualifying House	6.2	7.6
Reflections For Youth Inc., Grismore	1.0	0.3
Reflections For Youth Inc., Prairie View	0.0	0.5
Savio House	1.6	1.4
Summit Treatment Service, Inc	11.1	10.2
Synergy Administration	8.9	7.0
Third Way Center	5.0	6.1
Third Way Center, Pontiac	4.4	5.7
Third Way Center, York	11.9	9.8
Third Way Center, Lincoln	8.2	9.5
Turning Point Center, Prospect	2.5	3.5
Turning Point, Mathews St.	4.0	6.0
Whimspire Child Placement	2.0	1.7
Youthtrack, San Luis Valley	4.7	5.0
Youthtrack, Work and Learn	9.4	9.2
<i>Community Subtotal</i>	<i>112.4</i>	<i>110.9</i>
<b><i>Contract/Staff Supervised + Community Total</i></b>	<b><i>480.4</i></b>	<b><i>477.7</i></b>
<b>OTHER RESIDENTIAL</b>		
	<i>Monthly</i>	<i>YTD</i>
CMHI-Ft.Logan	0.0	0.2
CMHI-Pueblo	0.0	0.2
Hospital	1.0	0.4
Immigration Detention Facility	1.0	1.0
Job Corps Parole Program (Federally funded)	0.0	2.0
Other Mental Health Facility	1.2	1.7
Residential Drug/Alcohol Program	0.3	0.3
Residential Mental Health Program	1.9	1.0
Residential Work Program	0.1	0.0
Shelter Care (short term)	1.3	0.9
<i>Other Residential Total*</i>	<i>6.5</i>	<i>10.3</i>
<b>RESIDENTIAL TOTAL</b>	<b>834.1</b>	<b>856.7</b>

\*Other Residential Total may not accurately sum due to Trails-related issues

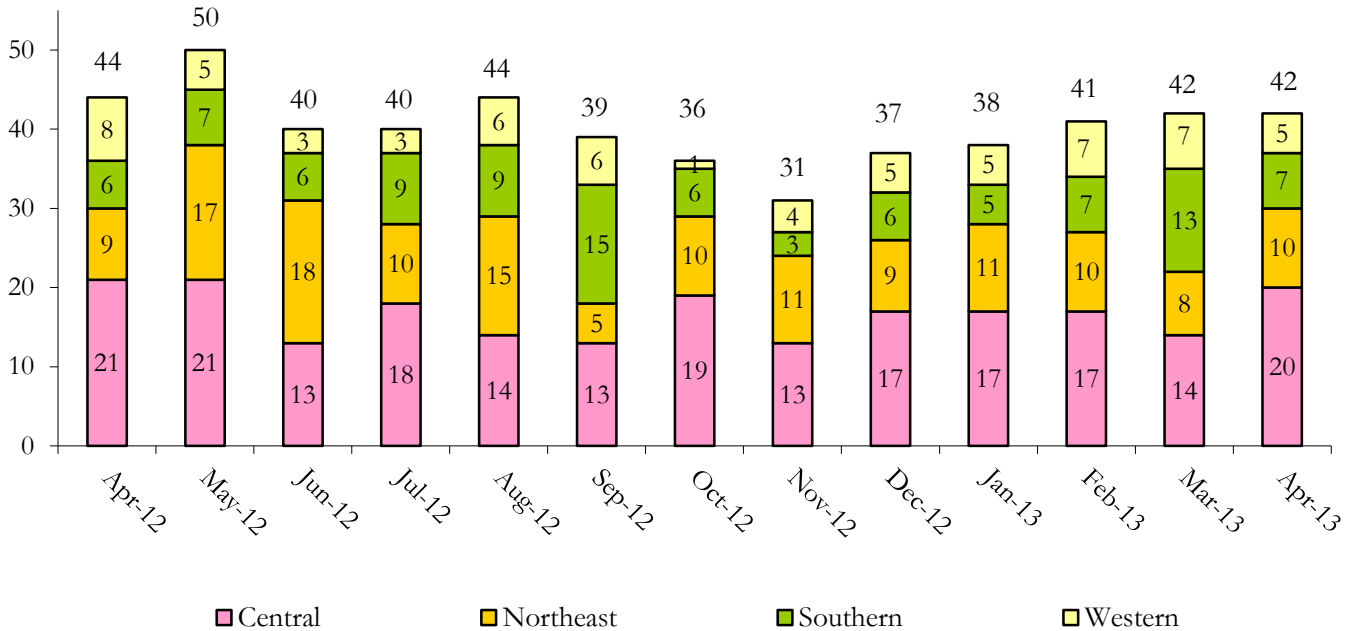
# April 2013 DYC Population Report

## IV. Commitment ADP and New Commitments

COMMITMENT ADP			
Region	Monthly		YTD
	April	% Change	
<i>Central Region</i>	346.5	-1.3%	363.9
<i>Northeast Region</i>	207.9	1.7%	218.4
<i>Southern Region</i>	174.1	0.4%	175.1
<i>Western Region</i>	105.6	3.0%	99.3
<b>Commitment ADP Total</b>	<b>834.1</b>	<b>0.3%</b>	<b>856.7</b>

NEW COMMITMENTS					
	FY 12-13		FY 11-12		% Change from last YTD
	April	YTD	April	YTD	
<i>Central Region</i>	20	165	21	177	-6.8%
<i>Northeast Region</i>	10	106	9	124	-14.5%
<i>Southern Region</i>	7	83	6	93	-10.8%
<i>Western Region</i>	5	53	8	42	26.2%
<b>TOTAL</b>	<b>42</b>	<b>407</b>	<b>44</b>	<b>436</b>	<b>-6.7%</b>

### Monthly New Commitments



# April 2013 DYC Population Report

## V. Parole Services

PAROLE ADP				
Region	Monthly	YTD		% Change fm prev YTD
		FY 12-13	FY 11-12	
<i>Central Region</i>	131.8	137.8	164.0	-15.9%
<i>Northeast Region</i>	74.2	99.0	97.3	1.7%
<i>Southern Region</i>	57.1	69.3	67.2	3.1%
<i>Western Region</i>	22.4	32.0	35.2	-9.1%
<b>Total</b>	<b>285.4</b>	<b>338.1</b>	<b>363.7</b>	<b>-7.0%</b>

Parole Intakes			Parole Discharges		
By Region	Monthly	YTD	Monthly	YTD	LOS
<i>Central Region</i>	20	177	16	218	7.1
<i>Northeast Region</i>	6	126	10	160	6.7
<i>Southern Region</i>	8	97	13	122	6.3
<i>Western Region</i>	0	41	10	62	5.8
<b>Total</b>	<b>34</b>	<b>441</b>	<b>49</b>	<b>562</b>	<b>6.7</b>

