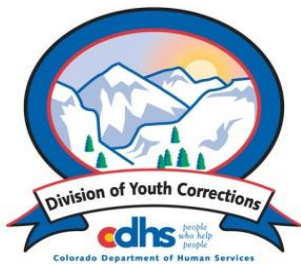


# MARCH 2013 MONTHLY POPULATION REPORT FY 2012 - 2013

---

Prepared by the Division of Youth Corrections Research and Evaluation Unit, May 1, 2013



Colorado Department of Human Services

Division of Youth Corrections

---

Working with Colorado Communities to Achieve Justice

# March 2013 DYC Population Report

<b>I. Summary Population Data</b>	<b>1</b>
<b>II. Detention ADP by Facility</b>	<b>2</b>
<b>III. Commitment Services</b>	
A. State and Contract ADP by Facility	3
B. Community/Other Residential ADP by Facility	4
<b>IV. Commitment ADP and New Commitments by Region</b>	<b>5</b>
<b>V. Parole Services</b>	<b>6</b>



# March 2013 DYC Population Report

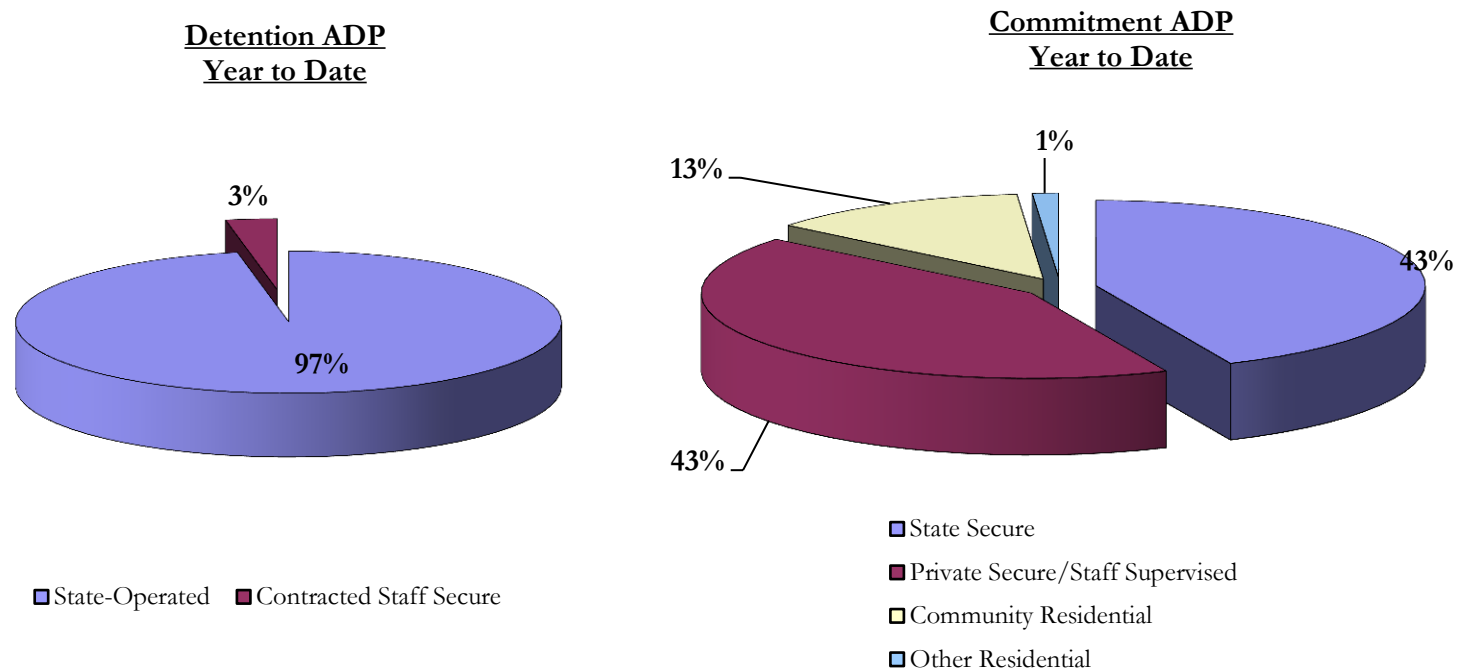
## I. Summary Population Data\*

DETAINED YOUTH				
	March 2013		YTD	
	ADP	% change	ADP	LOS
State-Operated	298.4	3.0%	295.3	14.9 days
Contracted Staff Secure	11.2	10.6%	9.4	20.7 days
<b>Total Detained</b>	<b>309.6</b>	<b>3.3%</b>	<b>304.7</b>	<b>15.0 days</b>

COMMITTED YOUTH				
	March 2013		YTD	
	ADP	% change	ADP	LOS
State Secure	348.8	7.0%	371.1	9.7 months
Private Secure/Staff Supervised	362.8	4.4%	367.2	6.5 months
Community Residential	111.3	6.1%	110.7	2.5 months
Other Residential	8.3	11.4%	10.6	4.3 days
<b>Total Committed Residential</b>	<b>831.3</b>	<b>0.6%</b>	<b>859.5</b>	<b>18.8 months</b>
<i>Committed Residential w/o Boulder</i>	<i>824.7</i>	<i>0.6%</i>	<i>854.8</i>	-

PAROLE YOUTH				
	March 2013		YTD	
	ADP	% change	ADP	LOS
Parole	306.0	-4.9%	344.8	6.8 months

TOTAL STATEWIDE ADP				
	March 2013		YTD	
	ADP	% change	ADP	LOS
DETENTION	309.6	3.3%	304.7	15.0 days
COMMITMENT	831.3	0.6%	859.5	18.8 months
PAROLE	306.0	-4.9%	344.8	6.8 months
<b>STATE TOTAL</b>	<b>1,446.9</b>	<b>-0.1%</b>	<b>1,509.1</b>	<b>N/A</b>



\*Due to rounding, totals shown may not be an exact sum of the subtotals

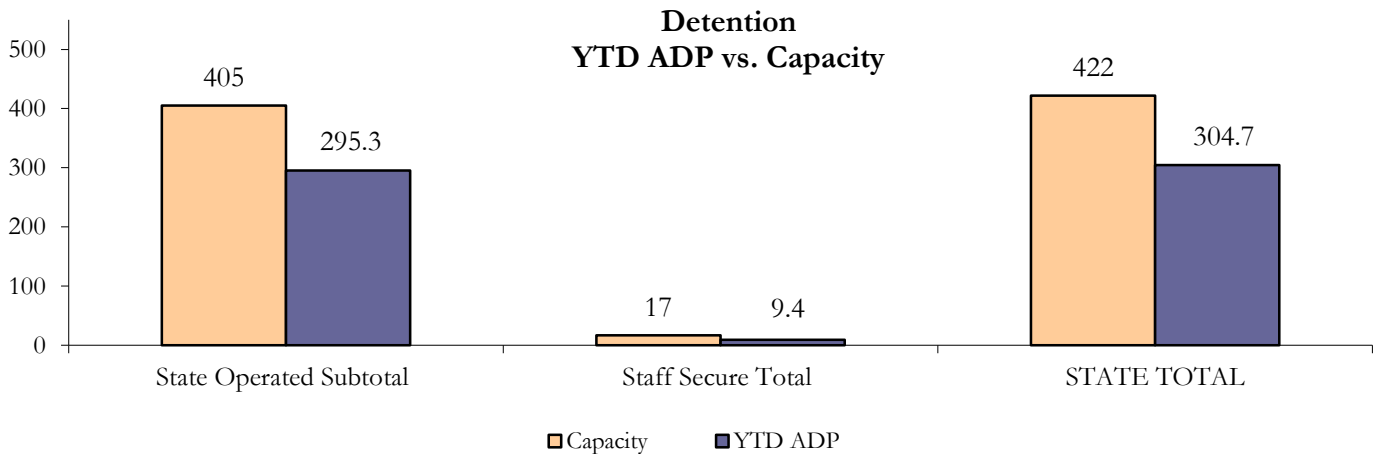
# March 2013 DYC Population Report

## II. Detention ADP by Facility

State Operated Detention							
Facility	Operating Capacity	Average Daily Population			New Admissions		LOS (days)
		Monthly	YTD	YTD % of Cap	Monthly	YTD	YTD
Adams	25	19.3	18.6	74.4%	44	432	11.3
Gilliam	64	56.4	55.7	87.0%	87	783	18.9
Grand Mesa	29	19.3	21.0	72.2%	31	267	18.5
Marvin Foote	80	48.4	55.6	69.5%	112	924	16.7
Mount View	51	28.9	29.8	58.4%	76	632	13.0
Platte Valley	69	54.9	51.2	74.2%	116	1,078	13.0
Pueblo	26	19.0	15.9	61.0%	52	430	9.4
Spring Creek	61	52.1	47.6	78.0%	86	772	16.5
<b>State Subtotal</b>	<b>405</b>	<b>298.4</b>	<b>295.3</b>	<b>72.9%</b>	<b>604</b>	<b>5,318</b>	<b>14.9</b>

Staff Secure Detention							
Facility	Operating Capacity	Average Daily Population			New Admissions		LOS (days)
		Monthly	YTD	YTD % of Cap	Monthly	YTD	YTD
Brown Center	3	1.8	1.3	43.7%	3	17	22.7
Robert DeNier	10	7.0	5.6	56.1%	11	63	20.0
Youthtrack San Luis Valley	4	2.4	2.5	62.0%	7	34	21.0
<b>Staff Secure Subtotal</b>	<b>17</b>	<b>11.2</b>	<b>9.4</b>	<b>55.3%</b>	<b>21</b>	<b>114</b>	<b>20.7</b>

STATEWIDE TOTAL							
	Operating Capacity	Average Daily Population			New Admissions		LOS (days)
		Monthly	YTD	YTD % of Cap	Monthly	YTD	YTD
<b>Total Detention</b>	<b>422</b>	<b>309.6</b>	<b>304.7</b>	<b>72.2%</b>	<b>625</b>	<b>5,432</b>	<b>15.0</b>



# March 2013 DYC Population Report

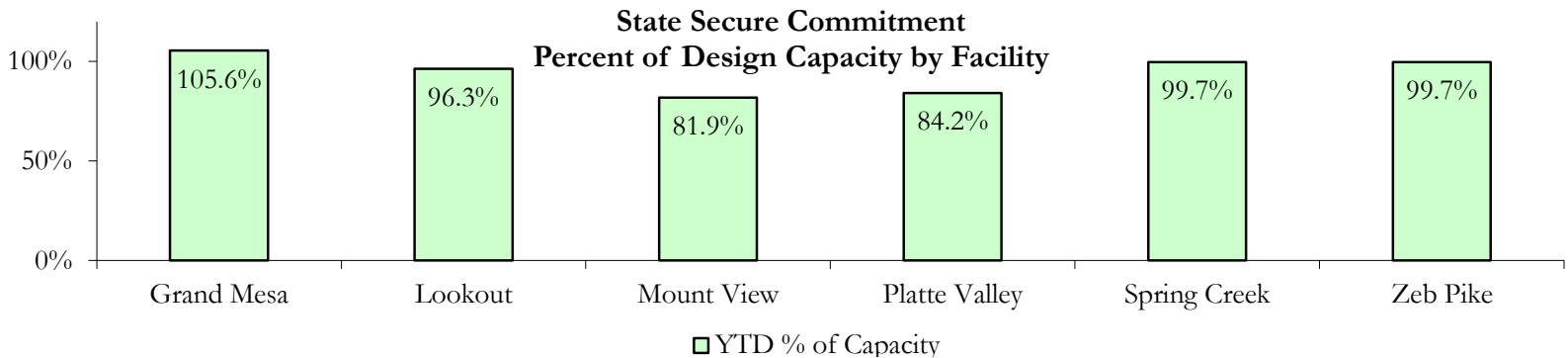
## III. Commitment Services

### A. State and Contract ADP by Facility

STATE SECURE				
Facility	ADP		Capacity	
	State Secure		Design	
	Monthly	YTD	Capacity	% of YTD
<i>Adams*</i>	0.1	0.3	N/A	N/A
<i>Gilliam*</i>	0.1	0.3	N/A	N/A
Grand Mesa	41.6	42.2	40	105.6%
Lookout	137.1	144.5	150	96.3%
<i>Marvin Foote*</i>	0.3	0.7	N/A	N/A
Mount View	42.2	56.5	69	81.9%
Platte Valley	51.8	48.9	58	84.2%
<i>Pueblo*</i>	0.0	1.0	N/A	N/A
Spring Creek	37.1	40.9	41	99.7%
Zeb Pike	38.4	35.9	36	99.7%
<b>Assessment Total</b>	<b>37.6</b>	<b>33.1</b>	-	-
<b>Secure Total</b>	<b>311.2</b>	<b>338.0</b>	-	-
<b>GRAND TOTAL</b>	<b>348.8</b>	<b>371.1</b>	<b>394</b>	<b>94.2%</b>

*\*Detention only facilities with commitment ADP due to committed youth being held in detention prior to commitment.*

CONTRACT + STAFF SUPERVISED		
Facility/Program	ADP	
	Monthly	YTD
Alternative Homes For Youth - Greeley	14.4	9.5
Betty K. Marler Center	39.5	40.0
Brown Center	3.0	2.5
Childrens Ark at Pueblo	7.6	6.5
Devereux Cleo Wallace	26.0	23.8
Gateway Residential Program - Delta	3.9	3.9
Hilltop (Residential Youth Services)	4.9	4.0
Jefferson Hills - Aurora	37.6	34.5
Mountain Crest/Poudre Valley Health System	10.1	7.2
Ridge View	182.5	197.4
Robert DeNier	12.5	12.5
Southern Peaks	10.4	14.8
Third Way Center - Lowry	10.5	10.6
<b>TOTAL</b>	<b>362.8</b>	<b>367.2</b>



# March 2013 DYC Population Report

## III. Commitment Services Continued B. Community/Other Residential ADP by Facility

<b>COMMUNITY RESIDENTIAL</b>		
	<i>Monthly</i>	<i>YTD</i>
Ariel Clinical Services	1.0	1.7
Community Corrections: Comcor	1.0	0.4
Community Corrections: Larimer	0.0	0.1
Community Corrections: Mesa County	2.7	1.1
Dale House Project	9.0	8.0
Denver Area Youth Services (DAYS)	0.0	0.8
Gateway Residential Program - Grand Junction	3.0	1.6
Griffith Centers (SR)	9.8	7.2
Griffith Centers - Chins Up	0.3	0.4
Job Corps	3.5	3.7
Kids Crossing	2.0	1.2
Lost and Found Inc. Arvada	0.0	0.8
Mt Evans Qualifying House	6.0	7.8
Reflections For Youth Inc., Grismore	0.6	0.3
Reflections For Youth Inc., Prairie View	0.0	0.6
Savio House	1.0	1.4
Summit Treatment Service, Inc	9.6	10.1
Synergy Administration	7.5	6.8
Third Way Center	4.7	6.2
Third Way Center, Pontiac	7.0	5.8
Third Way Center, York	11.0	9.6
Third Way Center, Lincoln	9.7	9.7
Turning Point Center, Prospect	1.0	3.6
Turning Point, Mathews St.	2.9	6.3
Whimspire Child Placement	1.4	1.7
Youthtrack, San Luis Valley	6.5	5.0
Youthtrack, Work and Learn	10.1	9.2
<i>Community Subtotal</i>	<i>111.3</i>	<i>110.7</i>
<b><i>Contract/Staff Supervised + Community Total</i></b>	<b><i>474.1</i></b>	<b><i>477.8</i></b>
<b>OTHER RESIDENTIAL</b>		
	<i>Monthly</i>	<i>YTD</i>
CMHI-Ft.Logan	0.0	0.2
CMHI-Pueblo	0.0	0.2
Hospital	1.2	0.2
Immigration Detention Facility	1.0	1.0
Job Corps Parole Program (Federally funded)	0.6	2.2
Other Mental Health Facility	1.2	1.7
Residential Drug/Alcohol Program	0.0	0.3
Residential Mental Health Program	2.7	0.9
Shelter Care (short term)	0.1	0.9
<i>Other Residential Total*</i>	<i>8.3</i>	<i>10.6</i>
<b>RESIDENTIAL TOTAL</b>	<b>831.3</b>	<b>859.5</b>

\*Other Residential Total may not accurately sum due to Trails-related issues

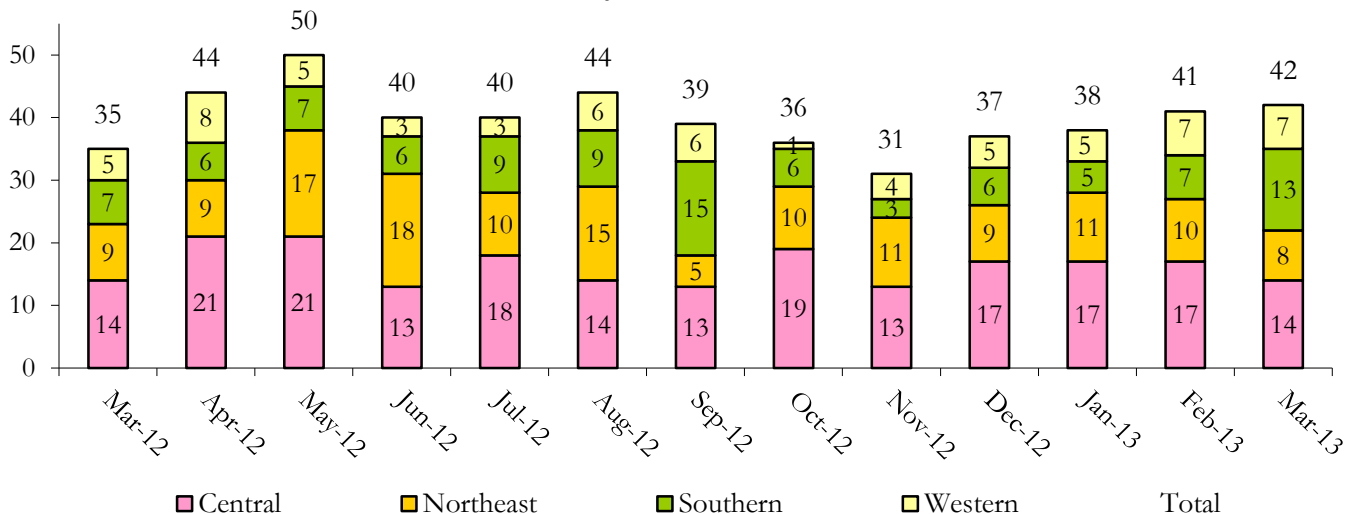
# March 2013 DYC Population Report

## IV. Commitment ADP and New Commitments by Region

COMMITMENT ADP			
Region	Monthly		YTD
	March	% Change	
Central Region	350.9	1.5%	365.4
Northeast Region	204.4	-2.2%	217.7
Southern Region	173.5	1.4%	177.2
Western Region	102.5	2.1%	99.2
<b>Commitment ADP Total</b>	<b>831.3</b>	<b>0.6%</b>	<b>859.5</b>

NEW COMMITMENTS					
	FY 12-13		FY 11-12		% Change from last YTD
	March	YTD	March	YTD	
<i>Central Region</i>	14	146	14	155	-5.8%
<i>Northeast Region</i>	8	95	9	115	-17.4%
<i>Southern Region</i>	13	76	7	87	-12.6%
<i>Western Region</i>	7	48	5	34	41.2%
<b>TOTAL</b>	<b>42</b>	<b>365</b>	<b>35</b>	<b>391</b>	<b>-6.6%</b>

### Monthly New Commitments



# March 2013 DYC Population Report

## V. Parole Services

PAROLE ADP				
Region	Monthly	YTD		% Change fm prev YTD
		FY 12-13	FY 11-12	
Central Region	131.8	138.6	164.3	-15.6%
Northeast Region	83.7	102.2	99.0	3.2%
Southern Region	60.4	70.6	68.4	3.2%
Western Region	30.2	33.4	35.5	-5.8%
<b>Total</b>	<b>306.0</b>	<b>344.8</b>	<b>367.2</b>	<b>-6.1%</b>

Parole Intakes			Parole Discharges		
By Region	Monthly	YTD	Monthly	YTD	LOS
Central Region	15	157	13	201	7.1
Northeast Region	9	118	18	147	6.8
Southern Region	5	89	14	109	6.4
Western Region	3	42	7	52	5.9
<b>Total</b>	<b>32</b>	<b>406</b>	<b>52</b>	<b>509</b>	<b>6.8</b>

