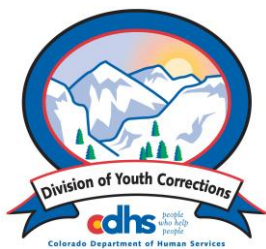


# JANUARY 2013 MONTHLY POPULATION REPORT FY 2012 - 2013

---

Prepared by the Division of Youth Corrections Research and Evaluation Unit February 20, 2013



Colorado Department of Human Services  
Division of Youth Corrections

---

Working with Colorado Communities to Achieve Justice

# January 2013 DYC Population Report

<b>I.</b>	<b>Summary Population Data</b>	<b>1</b>
<b>II.</b>	<b>Detention ADP by Facility</b>	<b>2</b>
<b>III.</b>	<b>Commitment Services</b>	
	A. State and Contract Secure ADP by Facility	3
	B. Community/Other Residential ADP by Facility	4
<b>IV.</b>	<b>ADP and New Commitments by Region</b>	<b>5</b>
<b>V.</b>	<b>Parole Services</b>	<b>6</b>

# January 2013 DYC Population Report

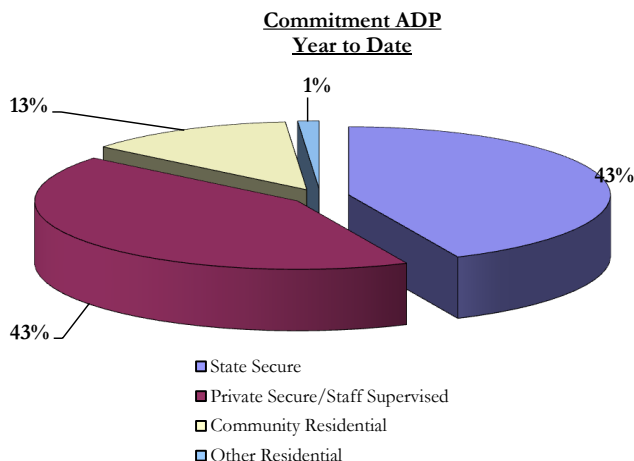
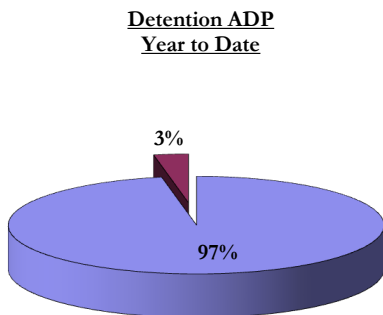
## I. Summary Population Data\*

DETAINED YOUTH				
	January 2013		YTD	
	ADP	% change	ADP	LOS
State-Operated	279.6	-5.1%	295.8	15.0 days
Contracted Staff Secure	8.9	-0.8%	9.1	20.9 days
<b>Total Detained</b>	<b>288.5</b>	<b>-5.0%</b>	<b>304.9</b>	<b>15.2 days</b>

COMMITTED YOUTH				
	January 2013		YTD	
	ADP	% change	ADP	LOS
State Secure	372.4	-0.1%	374.9	9.7 months
Private Secure/Staff Supervised	345.0	-4.2%	370.4	6.5 months
Community Residential	108.2	0.3%	111.3	2.5 months
Other Residential	7.3	-17.7%	11.4	4.5 days
<b>Total Committed Residential</b>	<b>833.0</b>	<b>-1.8%</b>	<b>868.0</b>	<b>18.9 months</b>
<i>Committed Residential w/o Boulder</i>	<i>826.4</i>	<i>-2.1%</i>	<i>863.7</i>	<i>-</i>

PAROLE YOUTH				
	January 2013		YTD	
	ADP	% change	ADP	LOS
Parole	314.9	-1.6%	355.2	6.8 months

TOTAL STATEWIDE ADP				
	January 2013		YTD	
	ADP	% change	ADP	LOS
DETENTION	288.5	-5.0%	304.9	15.2 days
COMMITMENT	833.0	-1.8%	868.0	18.9 months
PAROLE	314.9	-1.6%	355.2	6.8 months
<b>STATE TOTAL</b>	<b>1,436.4</b>	<b>-2.5%</b>	<b>1,528.0</b>	<b>N/A</b>



■ State-Operated ■ Contracted Staff Secure

■ State Secure  
■ Private Secure/Staff Supervised  
■ Community Residential  
■ Other Residential

\*Due to rounding, totals shown may not be an exact sum of the subtotals

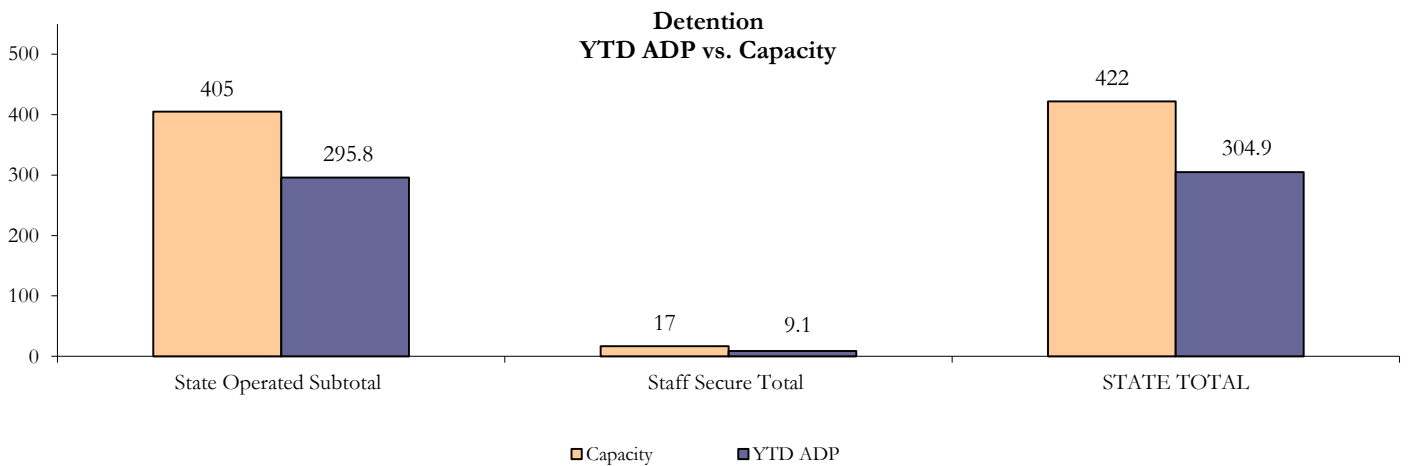
# January 2013 DYC Population Report

## II. Detention ADP by Facility

State Operated Detention							
Facility	Operating Capacity*	Average Daily Population			New Admissions		LOS (days)
		Monthly	YTD	YTD % of Cap	Monthly	YTD	YTD
Adams	25	16.0	18.4	73.7%	47	339	11.6
Gilliam	64	55.7	56.1	87.7%	102	620	18.6
Grand Mesa	29	22.0	21.7	75.0%	26	211	18.4
Marvin Foote	80	51.4	57.0	71.3%	119	723	17.8
Mount View	51	28.7	30.5	59.9%	67	493	12.5
Platte Valley	69	44.2	50.4	73.1%	134	856	12.8
Pueblo	26	14.7	15.1	58.0%	55	328	9.5
Spring Creek	61	46.8	46.5	76.3%	91	589	17.2
<b>State Subtotal</b>	<b>405</b>	<b>279.6</b>	<b>295.8</b>	<b>73.0%</b>	<b>641</b>	<b>4,159</b>	<b>15.0</b>

Staff Secure Detention							
Facility	Operating Capacity*	Average Daily Population			New Admissions		LOS (days)
		Monthly	YTD	YTD % of Cap	Monthly	YTD	YTD
Brown Center	3	1.7	1.1	35.3%	3	13	17.3
Robert DeNier	10	3.5	5.6	56.1%	5	47	20.1
Youthtrack San Luis Valley	4	3.6	2.4	59.6%	2	23	24.0
<b>Staff Secure Subtotal</b>	<b>17</b>	<b>8.9</b>	<b>9.1</b>	<b>53.3%</b>	<b>10</b>	<b>83</b>	<b>20.9</b>

STATEWIDE TOTAL							
	Operating Capacity*	Average Daily Population			New Admissions		LOS (days)
		Monthly	YTD	YTD % of Cap	Monthly	YTD	YTD
<b>Total Detention</b>	<b>422</b>	<b>288.5</b>	<b>304.9</b>	<b>72.2%</b>	<b>651</b>	<b>4,242</b>	<b>15.2</b>



# January 2013 DYC Population Report

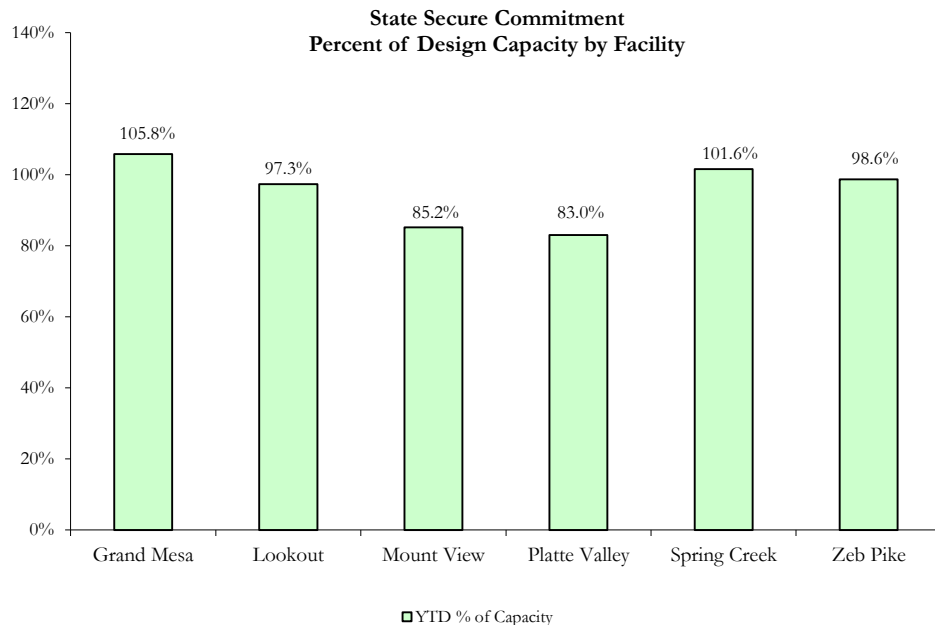
## III. Commitment Services

### A. State and Contract Secure ADP by Facility

<b>STATE SECURE</b>				
<i>Facility</i>	<b>ADP</b>		<b>Capacity</b>	
	<b>State Secure</b>		<b>Design</b>	
	Monthly	YTD	Capacity	% of YTD
<i>Adams*</i>	0.7	0.3	N/A	-
<i>Gilliam*</i>	0.1	0.3	N/A	-
Grand Mesa	42.2	42.3	40	105.8%
Lookout	144.0	146.0	150	97.3%
<i>Marvin Foote*</i>	0.8	0.8	N/A	-
Mount View	62.0	58.8	69	85.2%
Platte Valley	42.9	48.2	58	83.0%
<i>Pueblo*</i>	3.0	1.3	N/A	-
Spring Creek	41.8	41.6	41	101.6%
Zeb Pike	35.0	35.5	36	98.6%
<b>GRAND TOTAL</b>	<b>372.4</b>	<b>374.9</b>	<b>394</b>	<b>95.2%</b>

*\*Detention only facilities with commitment ADP due to committed youth being held in detention prior to commitment.*

<b>CONTRACT + STAFF SUPERVISED</b>		
<i>Facility/Program</i>	<b>ADP</b>	
	Monthly	YTD
Alternative Homes For Youth - Greeley	9.7	8.5
Betty K. Marler Center	40.9	39.9
Brown Center	2.6	2.4
Childrens Ark at Pueblo	3.4	6.3
Devereux Cleo Wallace	24.4	23.1
Gateway Residential Program - Delta	3.8	3.9
Hilltop (Residential Youth Services)	5.2	4.0
Jefferson Hills	30.6	34.2
Mountain Crest/Poudre Valley Health System	8.4	6.6
Ridge View	179.4	202.4
Robert DeNier	12.0	12.4
Southern Peaks	12.9	16.1
Third Way Center - Lowry	11.9	10.8
<b>TOTAL</b>	<b>345.0</b>	<b>370.4</b>



# January 2013 DYC Population Report

## III. Commitment Services Continued

### B. Community/Other Residential ADP by Facility

<b>COMMUNITY RESIDENTIAL</b>		
	<i>Monthly</i>	<i>YTD</i>
Ariel Clinical Services	1.5	1.8
Community Corrections: Comcor	0.9	0.2
Community Corrections: Larimer	0.0	0.1
Community Corrections: Mesa County	1.5	0.7
Dale House Project	7.3	7.7
Denver Area Youth Services (DAYS)	0.0	1.0
Gateway Residential Program - Grand Junction	1.0	1.3
Griffith Centers (SR)	9.7	6.4
Griffith Centers - Chins Up	0.0	0.4
Job Corps	3.1	3.8
Kids Crossing	1.0	1.0
Lost and Found Inc. Arvada	0.0	1.0
Mt Evans Qualifying House	7.7	8.3
Reflections For Youth Inc., Grismore	0.0	0.3
Reflections For Youth Inc., Prairie View	1.0	0.6
Savio House	1.0	1.5
Summit Treatment Service, Inc	11.1	10.4
Synergy Administration	6.3	6.7
Third Way Center	8.9	6.9
Third Way Center, Pontiac	5.4	5.2
Third Way Center, York	8.7	9.5
Third Way Center, Lincoln	11.2	9.4
Turning Point Center, Prospect	0.6	4.4
Turning Point, Mathews St.	3.1	7.3
Whimspire Child Placement	1.8	1.7
Youthtrack, San Luis Valley	5.5	4.6
Youthtrack, Work and Learn	10.0	9.2
<i>Community Subtotal</i>	<i>108.2</i>	<i>111.3</i>

***Contract/Staff Supervised + Community Total      453.2      481.7***

<b>OTHER RESIDENTIAL</b>		
	<i>Monthly</i>	<i>YTD</i>
CMHI-Ft.Logan	0.0	0.2
CMHI-Pueblo	0.0	0.3
Hospital	0.0	0.1
Immigration Detention Facility	1.9	0.9
Job Corps Parole Program (Federally funded)	1.4	2.5
Other Mental Health Facility	3.0	1.8
Residential Drug/Alcohol Program	0.0	0.4
Residential Mental Health Program	0.0	0.7
Shelter Care (short term)	1.1	1.1
<i>Other Residential Total*</i>	<i>7.3</i>	<i>11.4</i>
<b>RESIDENTIAL TOTAL</b>	<b>833.0</b>	<b>868.0</b>

\*Other Residential Total may not accurately sum due to Trails-related issues

# January 2013 DYC Population Report

## IV. ADP and New Commitments by Region

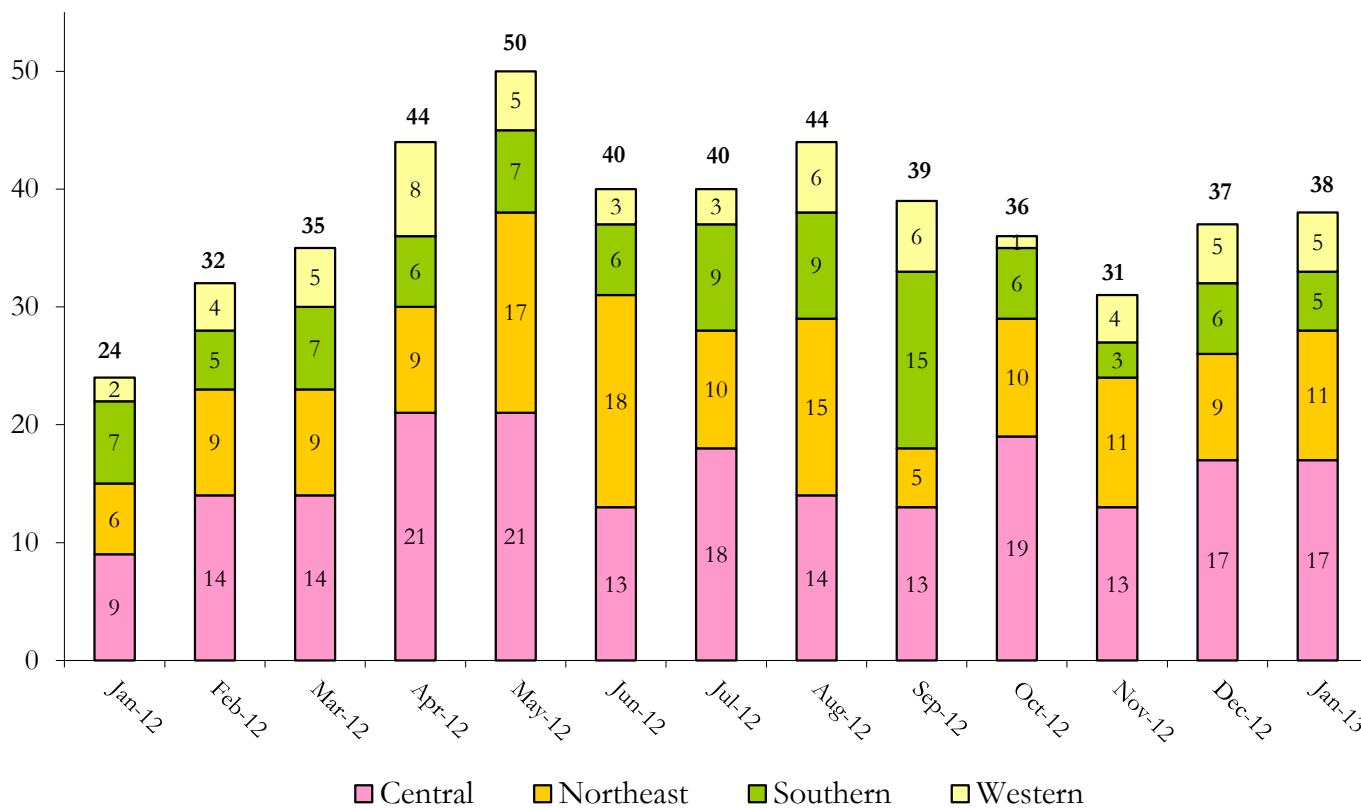
### COMMITMENT ADP

Region	Monthly		YTD
	Monthly	% Change	
Central Region	354.0	-2.5%	368.6
Northeast Region	210.1	-2.2%	222.1
Southern Region	168.9	-1.5%	176.4
Western Region	99.9	0.8%	100.9
<b>Commitment ADP Total</b>	<b>833.0</b>	<b>-1.8%</b>	<b>868.0</b>

### NEW COMMITMENTS

By Region	FY 12-13		FY 11-12		% Change fm last YTD
	Monthly	YTD	Monthly	YTD	
<i>Central Region</i>	17	113	9	124	-8.9%
<i>Northeast Region</i>	11	76	6	96	-20.8%
<i>Southern Region</i>	5	56	7	74	-24.3%
<i>Western Region</i>	5	35	2	23	52.2%
<b>TOTAL</b>	<b>38</b>	<b>280</b>	<b>24</b>	<b>317</b>	<b>-11.7%</b>

### Monthly New Commitments



# January 2013 DYC Population Report

## V. Parole Services

Parole ADP				
Region	Monthly	YTD		% Change fm prev YTD
		FY 12-13	FY 11-12	
Central	127.4	143.4	166.3	-13.7%
Northeast	89.6	105.4	103.2	2.1%
Southern	65.3	72.5	71.2	1.8%
Western	32.6	33.8	37.1	-8.8%
<b>Total</b>	<b>314.9</b>	<b>355.2</b>	<b>377.7</b>	<b>-6.0%</b>

By Region	Parole Intakes		Parole Discharges		LOS
	Monthly	YTD	Monthly	YTD	
Central Region	19	124	19	171	7.1
Northeast Region	15	92	12	114	6.5
Southern Region	5	72	14	85	6.7
Western Region	7	39	3	39	6.1
<b>TOTAL</b>	<b>46</b>	<b>327</b>	<b>48</b>	<b>409</b>	<b>6.8</b>

### Monthly Parole ADP

