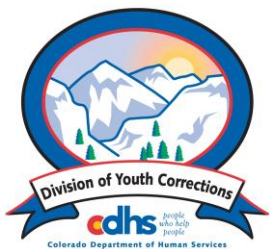


DECEMBER 2012 MONTHLY POPULATION REPORT FY 2012 - 2013

Prepared by the Division of Youth Corrections Research and Evaluation Unit January 17, 2013



Colorado Department of Human Services
Division of Youth Corrections

Working with Colorado Communities to Achieve Justice

December 2012 DYC Population Report

I.	Summary Population Data	1
II.	Detention ADP by Facility	2
III.	Commitment Services	
	A. State and Contract Secure ADP by Facility	3
	B. Community/Other Residential ADP by Facility	4
IV.	ADP and New Commitments by Region	5
V.	Parole Services	6

December 2012 DYC Population Report

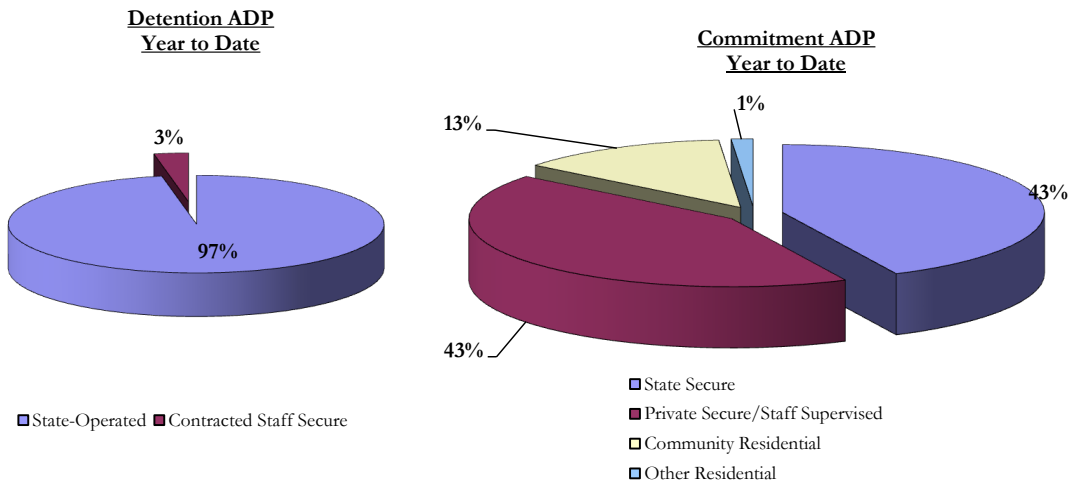
I. Summary Population Data*

DETAINED YOUTH				
	December 2012		YTD	
	ADP	% change	ADP	LOS
State-Operated	294.7	3.1%	299.3	15.0 days
Contracted Staff Secure	8.9	6.9%	9.1	20.3 days
Total Detained	303.6	3.2%	308.4	15.1 days

COMMITTED YOUTH				
	December 2012		YTD	
	ADP	% change	ADP	LOS
State Secure	371.5	7.3%	375.4	9.6 months
Private Secure/Staff Supervised	360.1	-0.6%	374.7	6.4 months
Community Residential	107.8	-2.2%	113.4	2.6 months
Other Residential	8.9	20.5%	11.7	4.6 days
Total Committed Residential	848.3	-0.4%	875.2	18.8 months
<i>Committed Residential w/o Boulder</i>	<i>843.9</i>	<i>-0.5%</i>	<i>871.3</i>	<i>-</i>

PAROLE YOUTH				
	December 2012		YTD	
	ADP	% change	ADP	LOS
Parole	319.9	-2.4%	360.3	6.6 months

TOTAL STATEWIDE ADP				
	December 2012		YTD	
	ADP	% change	ADP	LOS
DETENTION	303.6	3.2%	308.4	15.1 days
COMMITMENT	848.3	-0.4%	875.2	18.8 months
PAROLE	319.9	-2.4%	360.3	6.6 months
STATE TOTAL	1,471.8	-0.1%	1,544.0	N/A



*Due to rounding, totals shown may not be an exact sum of the subtotals

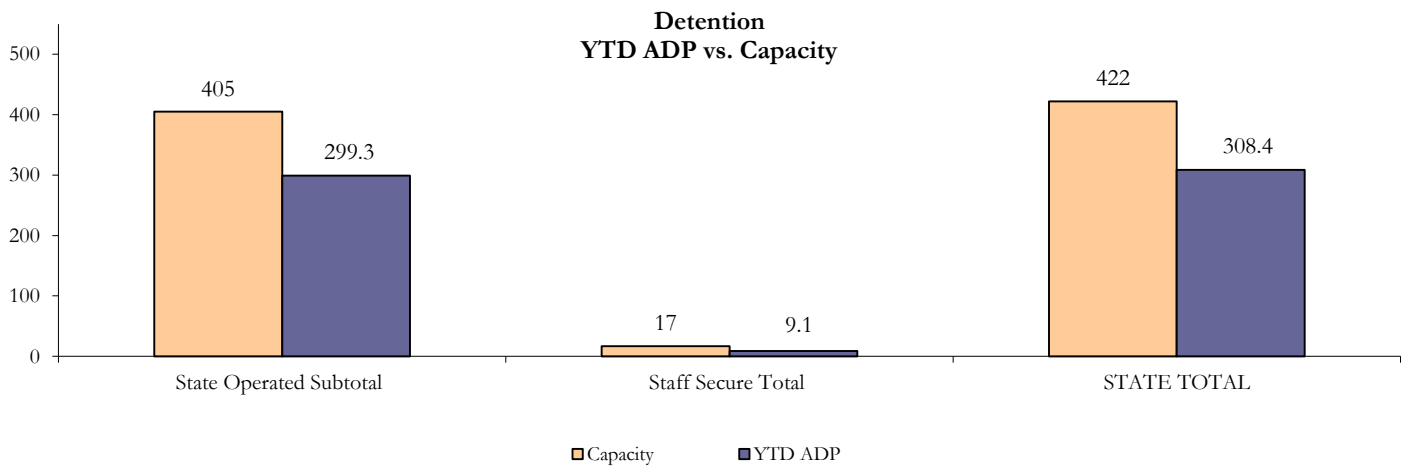
December 2012 DYC Management Report

II. Detention ADP by Facility

State Operated Detention							
Facility	Operating Capacity*	Average Daily Population			New Admissions		LOS (days)
		Monthly	YTD	YTD % of Cap	Monthly	YTD	YTD
Adams	25	18.4	18.8	75.3%	58	292	11.5
Gilliam	64	54.4	56.2	87.8%	72	518	19.1
Grand Mesa	29	24.9	21.7	74.8%	25	185	16.6
Marvin Foote	80	58.8	58.1	72.7%	98	605	17.4
Mount View	51	31.6	30.8	60.5%	60	426	12.4
Platte Valley	69	41.6	52.1	75.5%	91	725	13.3
Pueblo	26	14.6	15.1	58.1%	41	273	9.5
Spring Creek	61	50.3	46.5	76.2%	86	498	17.0
State Subtotal	405	294.7	299.3	73.9%	531	3,522	15.0

Staff Secure Detention							
Facility	Operating Capacity*	Average Daily Population			New Admissions		LOS (days)
		Monthly	YTD	YTD % of Cap	Monthly	YTD	YTD
Brown Center	3	1.7	0.9	31.4%	2	10	17.3
Robert DeNier	10	5.5	6.0	59.7%	7	42	19.1
Youthtrack San Luis Valley	4	1.7	2.2	54.4%	7	21	24.2
Staff Secure Subtotal	17	8.9	9.1	53.5%	16	73	20.3

STATEWIDE TOTAL							
	Operating Capacity*	Average Daily Population			New Admissions		LOS (days)
		Monthly	YTD	YTD % of Cap	Monthly	YTD	YTD
Total Detention	422	303.6	308.4	73.1%	547	3,595	15.1



December 2012 DYC Population Report

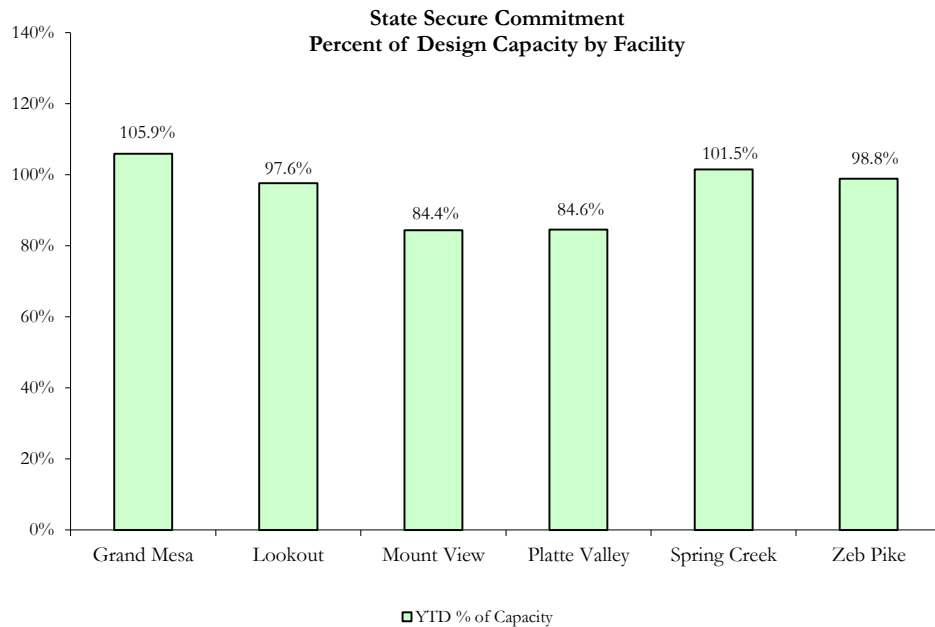
III. Commitment Services

A. State and Contract Secure ADP by Facility

STATE SECURE				
<i>Facility</i>	ADP		Capacity	
	State Secure		Design	
	Monthly	YTD	Capacity	% of YTD
<i>Adams*</i>	0.1	0.2	N/A	-
<i>Gilliam*</i>	0.4	0.3	N/A	-
Grand Mesa	39.4	42.3	40	105.9%
Lookout	147.7	146.4	150	97.6%
<i>Marvin Foote*</i>	1.1	0.7	N/A	-
Mount View	57.3	58.2	69	84.4%
Platte Valley	45.3	49.0	58	84.6%
<i>Pueblo*</i>	2.1	1.0	N/A	-
Spring Creek	42.4	41.6	41	101.5%
Zeb Pike	35.7	35.6	36	98.8%
GRAND TOTAL	371.5	375.4	394	95.3%

**Detention only facilities with commitment ADP due to committed youth being held in detention prior to commitment.*

CONTRACT + STAFF SUPERVISED		
<i>Facility/Program</i>	ADP	
	Monthly	YTD
Alternative Homes For Youth - Greeley	8.0	8.3
Betty K. Marler Center	41.0	39.8
Brown Center	2.7	2.3
Childrens Ark at Pueblo	4.0	6.7
Devereux Cleo Wallace	25.4	22.9
Gateway Residential Program - Delta	4.0	3.9
Hilltop (Residential Youth Services)	3.2	3.8
Jefferson Hills	32.3	34.9
Mountain Crest/Poudre Valley Health System	7.0	6.2
Ridge View	194.1	206.2
Robert DeNier	11.7	12.4
Southern Peaks	14.0	16.6
Third Way Center - Lowry	12.9	10.6
TOTAL	360.1	374.7



December 2012

DYC Population Report

III. Commitment Services Continued

B. Community/Other Residential ADP by Facility

COMMUNITY RESIDENTIAL		
	<i>Monthly</i>	<i>YTD</i>
Ariel Clinical Services	2.0	1.9
Community Corrections: Comcor	0.0	0.1
Community Corrections: Larimer	0.0	0.1
Community Corrections: Mesa County	1.0	0.5
Dale House Project	8.3	7.8
Denver Area Youth Services (DAYS)	0.0	1.2
Gateway Residential Program - Grand Junction	1.0	1.4
Griffith Centers (SR)	6.8	5.9
Griffith Centers - Chins Up	0.0	0.5
Job Corps	3.0	3.9
Kids Crossing	0.3	1.0
Lost and Found Inc. Arvada	0.0	1.2
Mt Evans Qualifying House	8.8	9.1
Reflections For Youth Inc., Grismore	0.0	0.3
Reflections For Youth Inc., Prairie View	1.0	0.5
Savio House	1.0	1.6
Summit Treatment Service, Inc	9.8	10.3
Synergy Administration	6.9	6.8
Third Way Center	8.9	6.6
Third Way Center, Pontiac	4.4	5.1
Third Way Center, York	8.9	9.6
Third Way Center, Lincoln	9.8	9.1
Turning Point Center, Prospect	2.2	5.0
Turning Point, Mathews St.	4.4	8.0
Whimspire Child Placement	2.1	2.6
Youthtrack, San Luis Valley	6.8	4.4
Youthtrack, Work and Learn	10.5	9.1
<i>Community Subtotal</i>	<i>107.8</i>	<i>113.4</i>

Contract/Staff Supervised + Community Total 467.9 488.1

OTHER RESIDENTIAL		
	<i>Monthly</i>	<i>YTD</i>
CMHI-Ft.Logan	0.8	0.3
CMHI-Pueblo	0.2	0.3
Hospital	0.0	0.1
Immigration Detention Facility	1.0	0.8
Job Corps Parole Program (Federally funded)	2.0	2.7
Other Mental Health Facility	2.2	1.6
Residential Drug/Alcohol Program	0.0	0.5
Residential Mental Health Program	0.0	0.8
Shelter Care (short term)	1.5	1.0
<i>Other Residential Total*</i>	<i>8.9</i>	<i>11.7</i>

RESIDENTIAL TOTAL		
	848.3	875.2

*Other Residential Total may not accurately sum due to Trails-related issues

December 2012 DYC Population Report

IV. ADP and New Commitments by Region

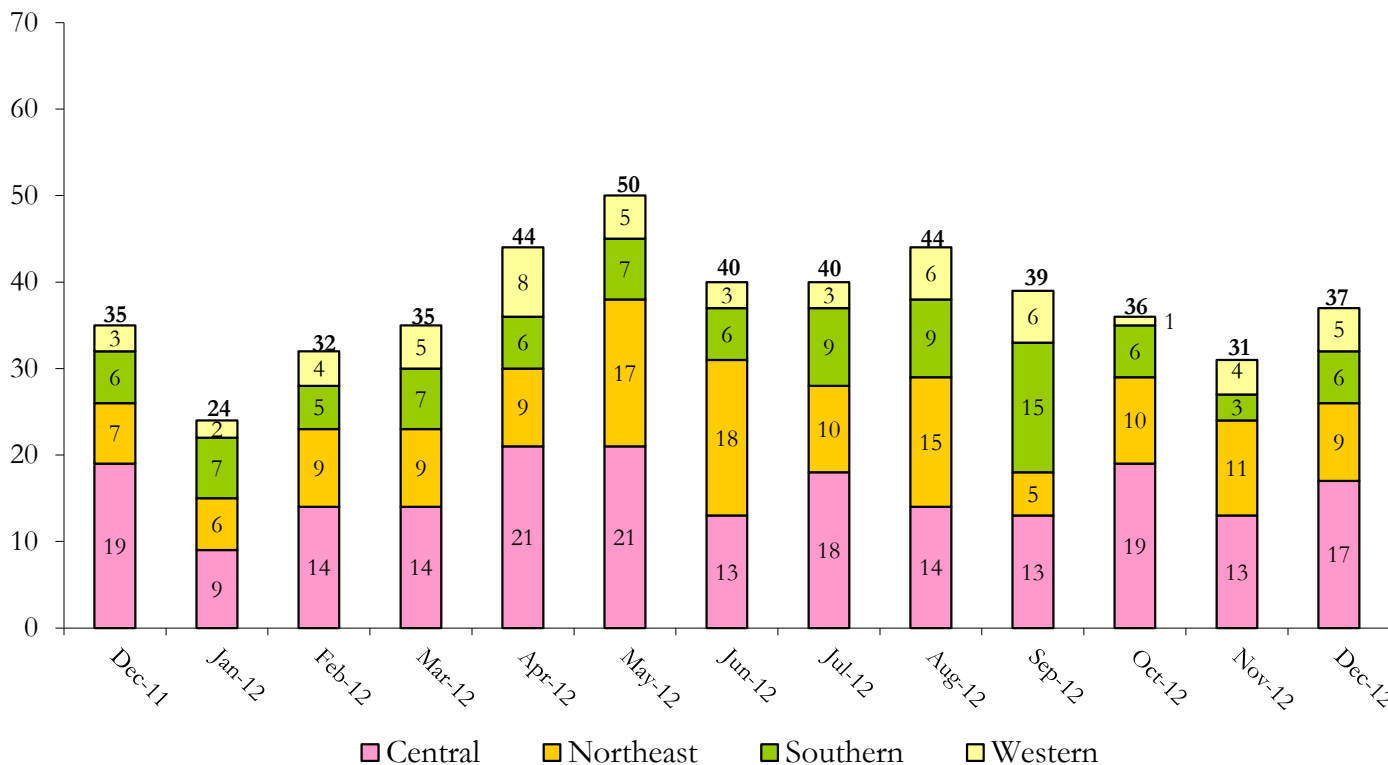
COMMITMENT ADP

Region	Monthly		YTD
	Monthly	% Change	
Central Region	363.0	-1.9%	371.8
Northeast Region	214.8	-0.4%	223.8
Southern Region	171.5	0.7%	177.6
Western Region	99.1	3.5%	102.0
Commitment ADP Total	848.3	-0.4%	875.2

NEW COMMITMENTS

By Region	FY 12-13		FY 11-12		% Change fm last YTD
	Monthly	YTD	Monthly	YTD	
<i>Central Region</i>	17	95	19	113	-15.9%
<i>Northeast Region</i>	9	65	7	89	-27.0%
<i>Southern Region</i>	6	51	6	67	-23.9%
<i>Western Region</i>	5	30	3	21	42.9%
TOTAL	37	241	35	290	-16.9%

Monthly New Commitments



December 2012 DYC Population Report

V. Parole Services

Parole ADP				
Region	Monthly	YTD		% Change fm prev YTD
		FY 12-13	FY 11-12	
Central	125.2	146.4	165.5	-11.6%
Northeast	95.6	108.2	106.6	1.5%
Southern	68.2	73.4	72.3	1.6%
Western	30.9	32.3	39.1	-17.3%
Total	319.9	360.3	383.5	-6.0%

By Region	Parole Intakes		Parole Discharges		LOS
	Monthly	YTD	Monthly	YTD	
Central Region	25	106	24	152	6.9
Northeast Region	12	76	11	96	6.2
Southern Region	7	66	10	71	6.7
Western Region	1	31	5	36	6.1
TOTAL	45	279	50	355	6.6

Monthly Parole ADP

