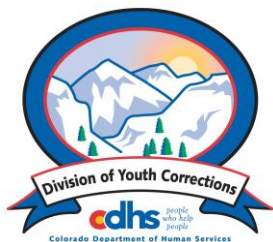


OCTOBER 2012 MONTHLY POPULATION REPORT FY 2012 - 2013

Prepared by the Division of Youth Corrections Research and Evaluation Unit November 29, 2012



Colorado Department of Human Services
Division of Youth Corrections

Working with Colorado Communities to Achieve Justice

October 2012 DYC Population Report

I.	Summary Population Data	1
II.	Detention ADP by Facility	2
III.	Commitment Services	
	A. State and Contract Secure ADP by Facility	3
	B. Community/Other Residential ADP by Facility	4
IV.	ADP and New Commitments by Region	5
V.	Parole Services	6

October 2012 DYC Population Report

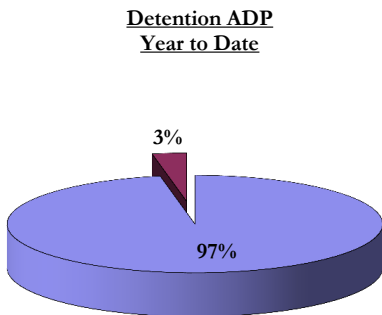
I. Summary Population Data*

DETAINED YOUTH				
	October 2012		YTD	
	ADP	% change	ADP	LOS
State-Operated	303.8	2.2%	304.8	15.5 days
Contracted Staff Secure	9.8	-4.5%	9.3	22.7 days
Total Detained	313.5	2.0%	314.1	15.6 days

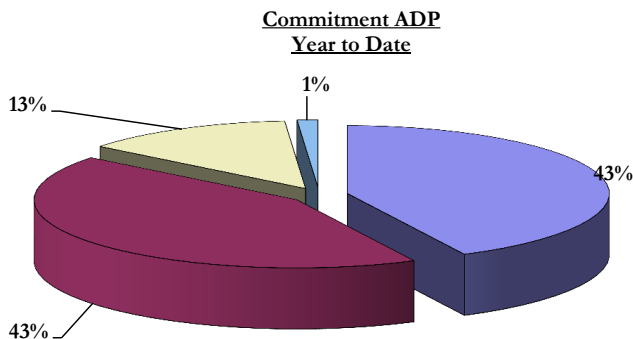
COMMITTED YOUTH				
	October 2012		YTD	
	ADP	% change	ADP	LOS
State Secure	374.7	-26.9%	377.5	9.4 months
Private Secure/Staff Supervised	368.6	-3.0%	380.9	6.5 months
Community Residential	107.8	2.6%	115.6	2.8 months
Other Residential	9.8	-36.9%	11.3	4.6 days
Total Committed Residential	860.9	-2.7%	885.3	18.8 months
<i>Committed Residential w/o Boulder</i>	<i>856.1</i>	<i>-2.8%</i>	<i>881.5</i>	-

PAROLE YOUTH				
	October 2012		YTD	
	ADP	% change	ADP	LOS
Parole	348.1	-6.6%	380.1	6.7 months

TOTAL STATEWIDE ADP				
	October 2012		YTD	
	ADP	% change	ADP	LOS
DETENTION	313.5	2.0%	314.1	15.6 days
COMMITMENT	860.9	-2.7%	885.3	18.8 months
PAROLE	348.1	-6.6%	380.1	6.7 months
STATE TOTAL	1,522.5	-2.7%	1,579.5	N/A



■ State-Operated ■ Contracted Staff Secure



■ State Secure
■ Private Secure/Staff Supervised
■ Community Residential
■ Other Residential

*Due to rounding, totals shown may not be an exact sum of the subtotals

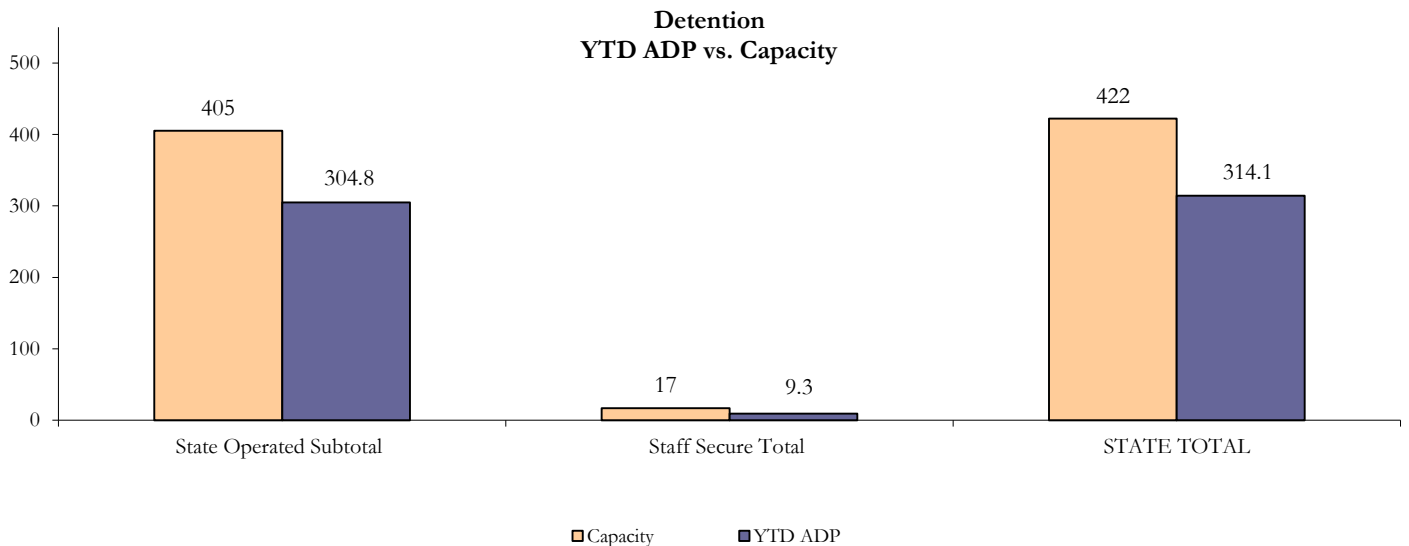
October 2012 DYC Management Report

II. Detention ADP by Facility

State Operated Detention							
Facility	Operating Capacity*	Average Daily Population			New Admissions		LOS (days)
		Monthly	YTD	YTD % of Cap	Monthly	YTD	YTD
Adams	25	19.3	19.2	76.7%	48	198	11.8
Gilliam	64	57.5	57.2	89.4%	99	364	18.6
Grand Mesa	29	21.5	20.5	70.6%	30	118	17.7
Marvin Foote	80	58.5	57.9	72.4%	120	411	19.1
Mount View	51	29.2	31.3	61.5%	83	307	12.5
Platte Valley	69	60.0	56.3	81.6%	116	509	13.2
Pueblo	26	10.8	15.8	60.6%	38	182	10.1
Spring Creek	61	46.9	46.6	76.4%	99	318	17.9
State Subtotal	405	303.8	304.8	75.3%	633	2,407	15.5

Staff Secure Detention							
Facility	Operating Capacity*	Average Daily Population			New Admissions		LOS (days)
		Monthly	YTD	YTD % of Cap	Monthly	YTD	YTD
Brown Center	3	1.3	0.5	15.6%	1	5	4.2
Robert DeNier	10	6.8	6.3	62.9%	6	31	21.3
Youthtrack San Luis Valley	4	1.6	2.6	63.8%	4	12	31.1
Staff Secure Subtotal	17	9.8	9.3	54.8%	11	48	22.7

STATEWIDE TOTAL							
	Operating Capacity*	Average Daily Population			New Admissions		LOS (days)
		Monthly	YTD	YTD % of Cap	Monthly	YTD	YTD
Total Detention	422	313.5	314.1	74.4%	644	2,455	15.6



October 2012 DYC Population Report

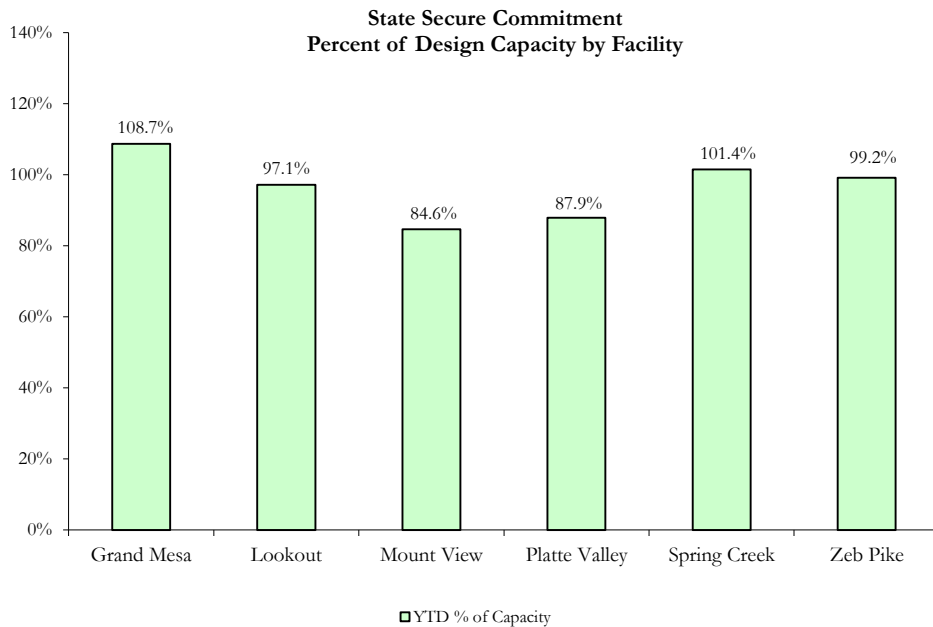
III. Commitment Services

A. State and Contract Secure ADP by Facility

STATE SECURE				
<i>Facility</i>	ADP		Capacity	
	State Secure		Design	
	Monthly	YTD	Capacity	% of YTD
<i>Adams*</i>	0.5	0.2	N/A	-
<i>Gilliam*</i>	0.3	0.3	N/A	-
Grand Mesa	42.9	43.5	40	108.7%
Lookout	145.5	145.7	150	97.1%
Marvin Foote	0.8	0.7	N/A	-
Mount View	58.9	58.4	69	84.6%
Platte Valley	44.6	51.0	58	87.9%
<i>Pueblo*</i>	2.3	0.5	N/A	-
Spring Creek	43.3	41.6	41	101.4%
Zeb Pike	35.5	35.7	36	99.2%
GRAND TOTAL	374.7	377.5	394	95.8%

**Detention Only facilities with commitment ADP due to detained youth being held prior to commitment*

CONTRACT + STAFF SUPERVISED		
<i>Facility/Program</i>	ADP	
	Monthly	YTD
Alternative Homes For Youth - Greeley	8.7	8.7
Betty K. Marler Center	40.1	39.2
Brown Center	2.0	2.3
Childrens Ark at Pueblo	8.5	7.9
Devereux Cleo Wallace	23.8	21.7
Gateway Residential Program - Delta	3.0	4.0
Hilltop (Residential Youth Services)	4.9	4.2
Jefferson Hills	34.8	35.4
Mountain Crest/Poudre Valley Health System	7.5	5.9
Ridge View	203.4	211.3
Robert DeNier	8.4	13.0
Southern Peaks	13.4	17.6
Third Way Center - Lowry	10.1	9.6
TOTAL	368.6	380.9



October 2012

DYC Population Report

III. Commitment Services Continued

B. Community/Other Residential ADP by Facility

COMMUNITY RESIDENTIAL		
	<i>Monthly</i>	<i>YTD</i>
Ariel Clinical Services	2.6	1.8
Comcor	0.0	0.2
Dale House Project	6.9	7.5
Denver Area Youth Services (DAYS)	1.0	1.6
Gateway Residential Program - Grand Junction	1.1	1.7
Griffith Centers (SR)	6.8	5.6
Griffith Centers - Chins Up	0.0	0.7
Job Corps	2.8	4.3
Kids Crossing	0.5	1.5
Larimer Community Corrections	0.0	0.1
Lost and Found Inc. Arvada	0.0	1.7
Mesa County Community Corrections	0.8	0.2
Mt Evans Qualifying House	8.8	9.3
Reflections For Youth Inc., Grismore	0.0	0.4
Reflections For Youth Inc., Prairie View	1.0	0.3
Savio House	1.5	1.7
Summit Treatment Service, Inc	11.1	10.4
Synergy Administration	5.5	7.1
Third Way Center	6.8	5.7
Third Way Center, Pontiac	5.0	5.4
Third Way Center, York	9.6	10.1
Third Way Center, Lincoln	7.5	8.7
Turning Point Center, Prospect	4.3	6.0
Turning Point, Mathews St.	7.7	9.1
Whimspire Child Placement	2.0	2.9
Youthtrack, San Luis Valley	4.4	3.4
Youthtrack, Work and Learn	10.4	8.3
<i>Community Subtotal</i>	<i>107.8</i>	<i>115.6</i>
Contract/Staff Supervised + Community Total	476.4	496.5
OTHER RESIDENTIAL		
	<i>Monthly</i>	<i>YTD</i>
CMHI-Ft.Logan	0.0	0.0
CMHI-Pueblo	0.7	0.4
Hospital	0.5	0.2
Immigration Detention Facility	0.0	0.8
Job Corps Parole Program (Federally funded)	3.2	3.1
Other Mental Health Facility	1.0	1.4
Residential Drug/Alcohol Program	0.4	0.5
Residential MH Program	1.0	1.1
Residential Work Program	0.0	0.0
Shelter Care (short term)	0.8	0.8
<i>Other Residential Total*</i>	<i>9.8</i>	<i>11.3</i>
RESIDENTIAL TOTAL	860.9	885.3

*Other Residential Total may not accurately sum due to Trails-related issues

October 2012 DYC Population Report

IV. ADP and New Commitments by Region

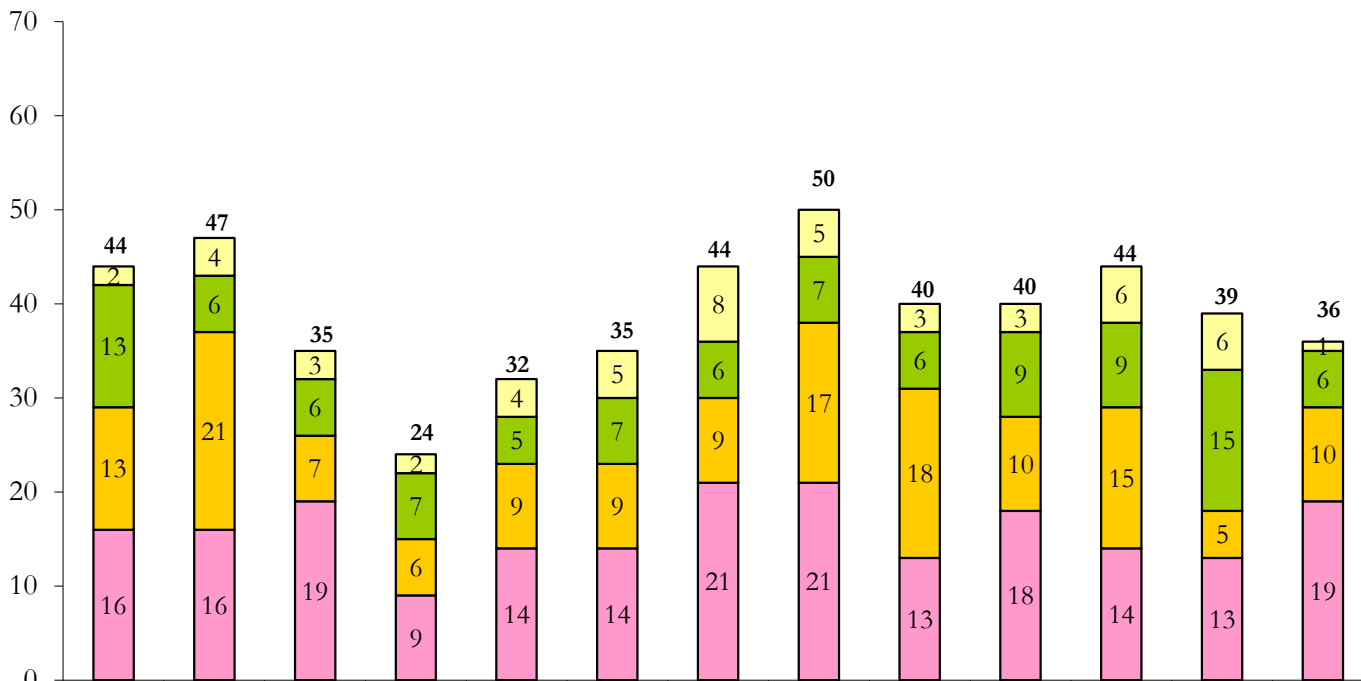
COMMITMENT ADP

Region	Monthly		YTD
	Monthly	% Change	
Central Region	367.0	-0.4%	371.9
Northeast Region	217.8	-4.1%	226.1
Southern Region	179.2	-1.8%	183.4
Western Region	96.9	-8.8%	103.9
Commitment ADP Total	860.9	-2.7%	885.3

NEW COMMITMENTS

By Region	FY 12-13		FY 11-12		<i>% Change fm last YTD</i>
	Monthly	YTD	Monthly	YTD	
<i>Central Region</i>	19	64	16	75	-14.7%
<i>Northeast Region</i>	10	43	13	58	-25.9%
<i>Southern Region</i>	6	40	13	50	-20.0%
<i>Western Region</i>	1	18	2	13	38.5%
TOTAL	36	165	44	196	-15.8%

Monthly New Commitments



October 2012 DYC Population Report

V. Parole Services

Parole ADP				
Region	Monthly	YTD		% Change fm prev YTD
		FY 12-13	FY 11-12	
Central	134.2	155.1	161.2	-3.7%
Northeast	110.1	117.8	109.5	7.7%
Southern	72.2	74.3	77.8	-4.5%
Western	31.6	32.8	40.2	-18.5%
Total	348.1	380.1	388.7	-2.2%

By Region	Parole Intakes		Parole Discharges		LOS
	Monthly	YTD	Monthly	YTD	
Central Region	13	62	29	103	6.9
Northeast Region	13	53	20	60	6.7
Southern Region	10	47	21	45	6.9
Western Region	7	26	7	25	5.8
TOTAL	43	188	77	233	6.7

Monthly Parole ADP

