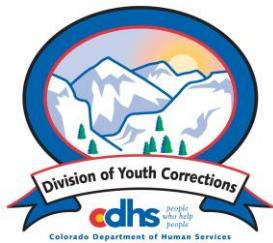


# SEPTEMBER 2012 MONTHLY POPULATION REPORT FY 2012 - 2013

---

Prepared by the Division of Youth Corrections Research and Evaluation Unit October 29, 2012



Colorado Department of Human Services  
Division of Youth Corrections

---

Working with Colorado Communities to Achieve Justice

# September 2012 DYC Population Report

|             |  |          |
|-------------|--|----------|
| <b>I.</b>   | <b>Summary Population Data</b>                 | <b>1</b> |
| <b>II.</b>  | <b>Detention ADP by Facility</b>               | <b>2</b> |
| <b>III.</b> | <b>Commitment Services</b>                     |          |
|             | A. State and Contract Secure ADP by Facility   | 3        |
|             | B. Community/Other Residential ADP by Facility | 4        |
| <b>IV.</b>  | <b>ADP and New Commitments by Region</b>       | <b>5</b> |
| <b>V.</b>   | <b>Parole Services</b>                         | <b>6</b> |

# September 2012 DYC Population Report

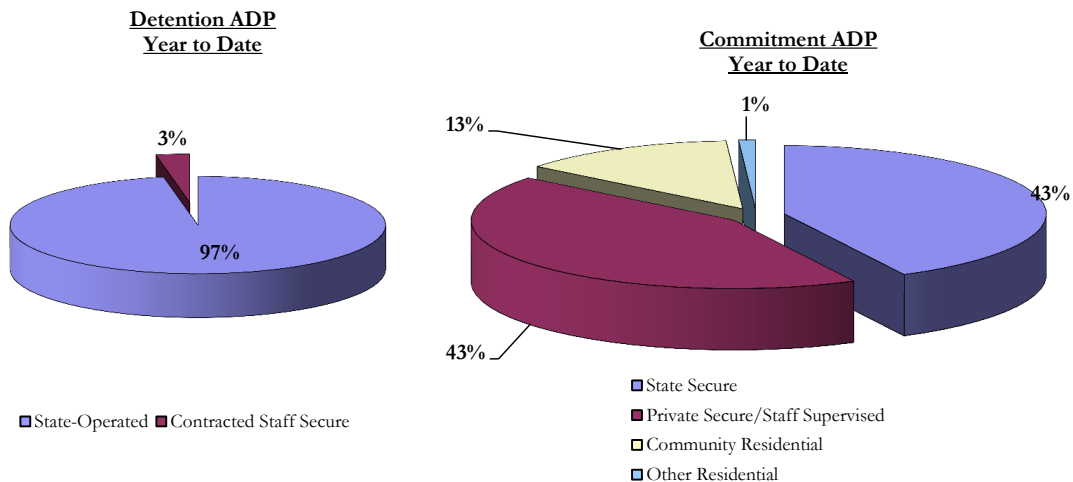
## I. Summary Population Data\*

| DETAINED YOUTH          |                |              |              |                  |
|-------------------------|----------------|--------------|--------------|------------------|
|                         | September 2012 |              | YTD          |                  |
|                         | ADP            | % change     | ADP          | LOS              |
| State-Operated          | 297.1          | -1.2%        | 305.1        | 15.4 days        |
| Contracted Staff Secure | 10.2           | 5.4%         | 9.2          | 22.0 days        |
| <b>Total Detained</b>   | <b>307.4</b>   | <b>-1.0%</b> | <b>314.3</b> | <b>15.5 days</b> |

| COMMITTED YOUTH                          |                |              |              |                    |
|--|----------------|--------------|--------------|--------------------|
|  | September 2012 |              | YTD          |                    |
|  | ADP            | % change     | ADP          | LOS                |
| State Secure                             | 383.6          | 11.4%        | 378.9        | 9.1 months         |
| Private Secure/Staff Supervised          | 380.1          | -2.0%        | 385.7        | 6.3 months         |
| Community Residential                    | 105.1          | -9.0%        | 118.8        | 3.1 months         |
| Other Residential                        | 15.6           | 80.7%        | 9.1          | 4.4 days           |
| <b>Total Committed Residential</b>       | <b>884.3</b>   | <b>-0.1%</b> | <b>892.5</b> | <b>18.6 months</b> |
| <i>Committed Residential w/o Boulder</i> | <i>881.0</i>   | <i>-0.1%</i> | <i>889.0</i> | <i>-</i>           |

| PAROLE YOUTH |                |          |       |            |
|--------------|----------------|----------|-------|------------|
|              | September 2012 |          | YTD   |            |
|              | ADP            | % change | ADP   | LOS        |
| Parole       | 372.8          | -4.5%    | 387.2 | 6.7 months |

| TOTAL STATEWIDE ADP |                |              |                |             |
|---------------------|----------------|--------------|----------------|-------------|
|                     | September 2012 |              | YTD            |             |
|                     | ADP            | % change     | ADP            | LOS         |
| DETENTION           | 307.4          | -1.0%        | 314.3          | 15.5 days   |
| COMMITMENT          | 884.3          | -0.1%        | 892.5          | 18.6 months |
| PAROLE              | 372.8          | -4.5%        | 387.2          | 6.7 months  |
| <b>STATE TOTAL</b>  | <b>1,564.5</b> | <b>-1.4%</b> | <b>1,593.9</b> | <b>N/A</b>  |



\*Due to rounding, totals shown may not be an exact sum of the subtotals

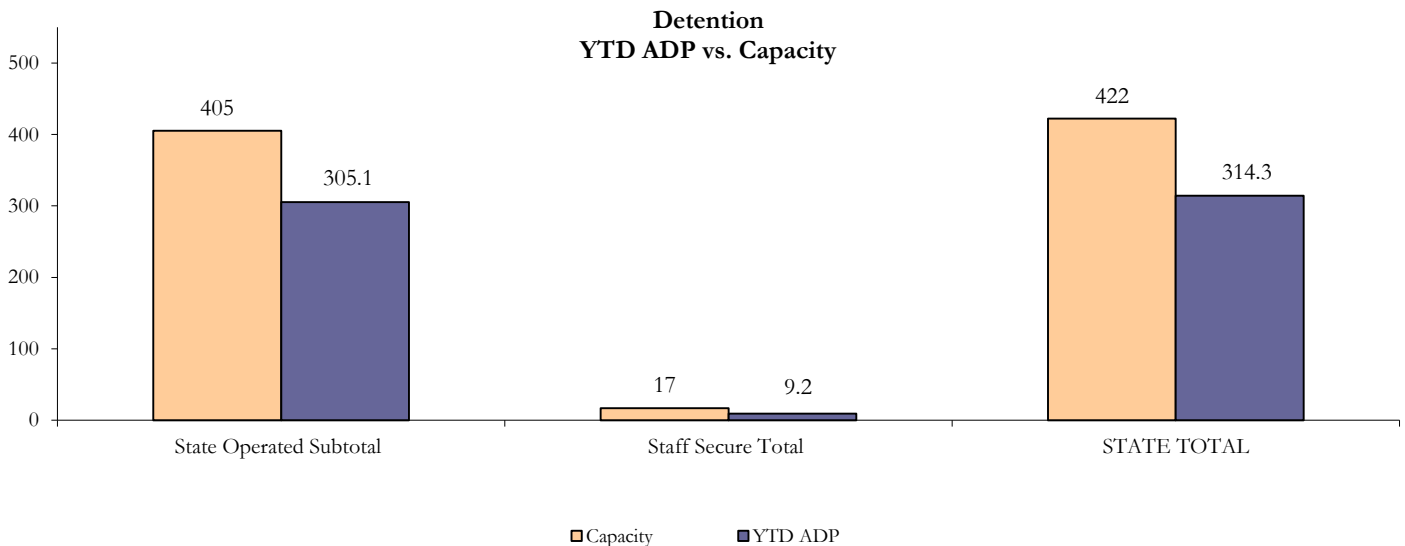
# September 2012 DYC Population Report

## II. Detention ADP by Facility

| State Operated Detention |                     |                          |              |              |                |              |             |
|--------------------------|---------------------|--------------------------|--------------|--------------|----------------|--------------|-------------|
| Facility                 | Operating Capacity* | Average Daily Population |              |              | New Admissions |              | LOS (days)  |
|                          |                     | Monthly                  | YTD          | YTD % of Cap | Monthly        | YTD          | YTD         |
| Adams                    | 25                  | 19.7                     | 19.2         | 76.6%        | 47             | 150          | 11.6        |
| Gilliam                  | 64                  | 57.3                     | 57.1         | 89.3%        | 90             | 265          | 18.6        |
| Grand Mesa               | 29                  | 20.9                     | 20.1         | 69.4%        | 29             | 88           | 16.5        |
| Marvin Foote             | 80                  | 52.0                     | 57.7         | 72.2%        | 87             | 291          | 19.1        |
| Mount View               | 51                  | 30.4                     | 32.3         | 63.4%        | 65             | 224          | 12.4        |
| Platte Valley            | 69                  | 53.9                     | 55.0         | 79.7%        | 121            | 393          | 12.8        |
| Pueblo                   | 26                  | 18.6                     | 17.1         | 65.8%        | 40             | 144          | 10.7        |
| Spring Creek             | 61                  | 44.3                     | 46.5         | 76.2%        | 62             | 219          | 18.7        |
| <b>State Subtotal</b>    | <b>405</b>          | <b>297.1</b>             | <b>305.1</b> | <b>75.3%</b> | <b>541</b>     | <b>1,774</b> | <b>15.4</b> |

| Staff Secure Detention       |                     |                          |            |              |                |           |             |
|------------------------------|---------------------|--------------------------|------------|--------------|----------------|-----------|-------------|
| Facility                     | Operating Capacity* | Average Daily Population |            |              | New Admissions |           | LOS (days)  |
|                              |                     | Monthly                  | YTD        | YTD % of Cap | Monthly        | YTD       | YTD         |
| Brown Center                 | 3                   | 0.5                      | 0.2        | 5.7%         | 3              | 4         | 1.6         |
| Robert DeNier                | 10                  | 7.0                      | 6.1        | 61.2%        | 8              | 25        | 19.7        |
| Youthtrack San Luis Valley   | 4                   | 2.7                      | 2.9        | 71.6%        | 3              | 8         | 31.7        |
| <b>Staff Secure Subtotal</b> | <b>17</b>           | <b>10.2</b>              | <b>9.2</b> | <b>53.8%</b> | <b>14</b>      | <b>37</b> | <b>22.0</b> |

| STATEWIDE TOTAL        |                     |                          |              |              |                |              |             |
|------------------------|---------------------|--------------------------|--------------|--------------|----------------|--------------|-------------|
|                        | Operating Capacity* | Average Daily Population |              |              | New Admissions |              | LOS (days)  |
|                        |                     | Monthly                  | YTD          | YTD % of Cap | Monthly        | YTD          | YTD         |
| <b>Total Detention</b> | <b>422</b>          | <b>307.4</b>             | <b>314.3</b> | <b>74.5%</b> | <b>555</b>     | <b>1,811</b> | <b>15.5</b> |



# September 2012 DYC Population Report

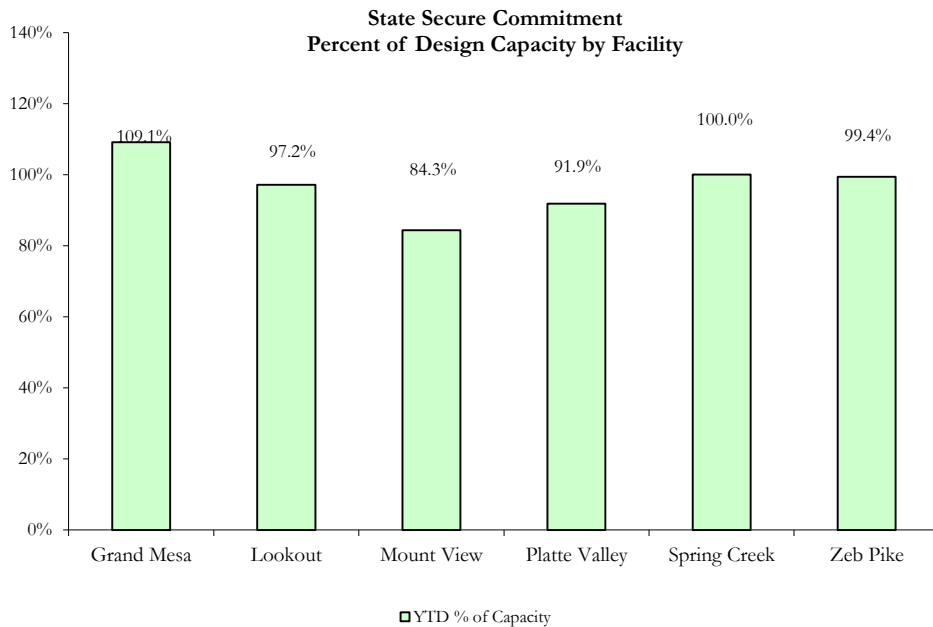
## III. Commitment Services

### A. State and Contract Secure ADP by Facility

| <b>STATE SECURE</b> |                     |              |                 |              |
|---------------------|---------------------|--------------|-----------------|--------------|
| <i>Facility</i>     | <b>ADP</b>          |              | <b>Capacity</b> |              |
|                     | <b>State Secure</b> |              | <b>Design</b>   |              |
|                     | Monthly             | YTD          | Capacity        | % of YTD     |
| <i>Adams*</i>       | 0.1                 | 0.1          | N/A             | -            |
| <i>Gilliam*</i>     | 0.1                 | 0.3          | N/A             | -            |
| Grand Mesa          | 44.5                | 43.7         | 40              | 109.1%       |
| Lookout             | 146.9               | 145.8        | 150             | 97.2%        |
| Marvin Foote        | 0.8                 | 0.6          | N/A             | -            |
| Mount View          | 53.8                | 58.2         | 69              | 84.3%        |
| Platte Valley       | 54.3                | 53.3         | 58              | 91.9%        |
| <i>Pueblo*</i>      | 0.9                 | 0.3          | N/A             | -            |
| Spring Creek        | 46.1                | 41.0         | 41              | 100.0%       |
| Zeb Pike            | 36.3                | 35.8         | 36              | 99.4%        |
| <b>GRAND TOTAL</b>  | <b>383.6</b>        | <b>378.9</b> | <b>394</b>      | <b>96.2%</b> |

*\*Detention Only facilities with commitment ADP due to detained youth being held prior to commitment*

| <b>CONTRACT + STAFF SECURE</b>             |              |              |
|--|--------------|--------------|
| <i>Facility/Program</i>                    | <b>ADP</b>   |              |
|  | Monthly      | YTD          |
| Alternative Homes For Youth - Greeley      | 8.4          | 8.7          |
| Betty K. Marler Center                     | 40.3         | 38.8         |
| Brown Center                               | 2.2          | 2.5          |
| Childrens Ark at Pueblo                    | 9.0          | 7.7          |
| Devereux Cleo Wallace                      | 23.5         | 21.0         |
| Gateway Residential Program - Delta        | 4.0          | 4.4          |
| Hilltop (Residential Youth Services)       | 4.8          | 4.5          |
| Jefferson Hills                            | 34.8         | 35.7         |
| Mountain Crest/Poudre Valley Health System | 7.1          | 5.3          |
| Ridge View                                 | 208.3        | 214.1        |
| Robert DeNier                              | 13.2         | 14.6         |
| Southern Peaks                             | 14.8         | 19.1         |
| Third Way Center - Lowry                   | 9.6          | 9.5          |
| <b>TOTAL</b>                               | <b>380.1</b> | <b>385.7</b> |



# September 2012

## DYC Population Report

### III. Commitment Services Continued

#### B. Community/Other Residential ADP by Facility

| <b>COMMUNITY RESIDENTIAL**</b>                        |                     |                     |
|---|---------------------|---------------------|
|   | <i>Monthly</i>      | <i>YTD</i>          |
| Ariel Clinical Services                               | 0.0                 | 1.6                 |
| Comcor  | 0.0                 | 0.2                 |
| Dale House Project                                    | 7.9                 | 7.7                 |
| Denver Area Youth Services (DAYS)                     | 0.0                 | 1.8                 |
| Gateway Residential Program - Grand Junction          | 1.3                 | 1.9                 |
| Griffith Centers (SR)                                 | 6.2                 | 5.2                 |
| Griffith Centers - Chins Up                           | 0.0                 | 1.0                 |
| Job Corps   | 4.3                 | 5.1                 |
| Kids Crossing   | 0.0                 | 1.8                 |
| Larimer Community Corrections                         | 0.2                 | 0.2                 |
| Lost and Found Inc. Arvada                            | 0.0                 | 2.3                 |
| Mt Evans Qualifying House                             | 8.7                 | 9.5                 |
| Reflections For Youth Inc., Grismore                  | 0.0                 | 0.6                 |
| Reflections For Youth Inc., Prairie View              | 0.1                 | 0.0                 |
| Savio House   | 1.0                 | 1.8                 |
| Summit Treatment Service, Inc                         | 10.4                | 10.2                |
| Synergy Administration                                | 6.8                 | 7.7                 |
| Third Way Center                                      | 6.2                 | 5.3                 |
| Third Way Center, Pontiac                             | 6.0                 | 5.5                 |
| Third Way Center, York                                | 10.0                | 10.2                |
| Third Way Center, Lincoln                             | 9.7                 | 9.0                 |
| Turning Point Center, Prospect                        | 5.1                 | 6.6                 |
| Turning Point, Mathews St.                            | 9.6                 | 9.6                 |
| Whimspire Child Placement                             | 0.0                 | 3.5                 |
| Youthtrack, San Luis Valley                           | 2.4                 | 3.1                 |
| Youthtrack, Work and Learn                            | 9.0                 | 7.5                 |
| <i>Community Subtotal</i>                             | <i>105.1</i>        | <i>118.8</i>        |
| <br>  |                     |                     |
| <b><i>Contract/Staff Secure + Community Total</i></b> | <b><i>485.1</i></b> | <b><i>504.5</i></b> |
| <b>OTHER RESIDENTIAL</b>                              |                     |                     |
|   | <i>Monthly</i>      | <i>YTD</i>          |
| CMHI-Pueblo   | 0.1                 | 0.3                 |
| Hospital  | 0.0                 | 0.1                 |
| Immigration Detention Facility                        | 0.8                 | 1.0                 |
| Job Corps Parole Program (Federally funded)           | 2.7                 | 2.8                 |
| Other Mental Health Facility                          | 1.0                 | 1.6                 |
| Residential Drug/Alcohol Program                      | 0.3                 | 0.5                 |
| Residential MH Program                                | 1.0                 | 1.2                 |
| Shelter Care (short term)                             | 0.0                 | 0.8                 |
| <i>Other Residential Total*</i>                       | <i>15.6</i>         | <i>9.1</i>          |
| <b>RESIDENTIAL TOTAL</b>                              |                     |                     |
|   | <b>884.3</b>        | <b>892.5</b>        |

\*Other Residential Total may not accurately sum due to Trails-related issues

# September 2012 DYC Population Report

## IV. ADP and New Commitments by Region

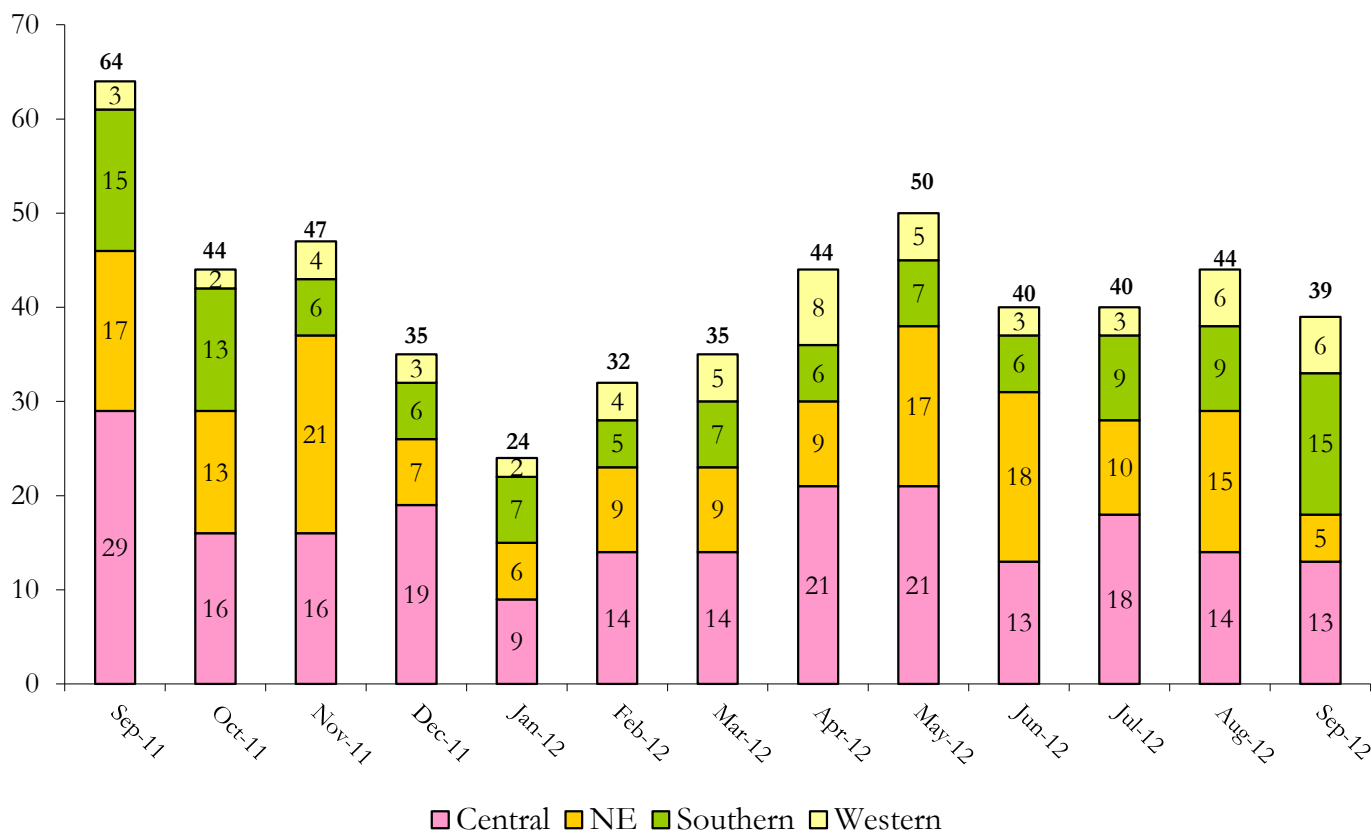
### COMMITMENT ADP

| Region                      | Monthly      |              | YTD          |
|-----------------------------|--------------|--------------|--------------|
|                             | Monthly      | % Change     |              |
| Central Region              | 368.5        | -1.3%        | 373.3        |
| Northeast Region            | 227.0        | -0.2%        | 229.0        |
| Southern Region             | 182.6        | 0.9%         | 183.3        |
| Western Region              | 106.3        | 2.2%         | 106.9        |
| <b>Commitment ADP Total</b> | <b>884.3</b> | <b>-0.1%</b> | <b>892.5</b> |

### NEW COMMITMENTS

| By Region               | FY 12-13  |            | FY 11-12  |            | % Change fm<br>last YTD |
|-------------------------|-----------|------------|-----------|------------|-------------------------|
|                         | Monthly   | YTD        | Monthly   | YTD        |                         |
| <i>Central Region</i>   | 13        | 45         | 29        | 59         | -23.7%                  |
| <i>Northeast Region</i> | 5         | 33         | 17        | 43         | -23.3%                  |
| <i>Southern Region</i>  | 15        | 34         | 15        | 37         | -8.1%                   |
| <i>Western Region</i>   | 6         | 16         | 3         | 11         | 45.5%                   |
| <b>TOTAL</b>            | <b>39</b> | <b>128</b> | <b>64</b> | <b>150</b> | <b>-14.7%</b>           |

**Monthly New Commitments**



# September 2012 DYC Population Report

## V. Parole Services

| Parole ADP   |              |              |              |                         |
|--------------|--------------|--------------|--------------|-------------------------|
| Region       | Monthly      | YTD          |              | % Change fm<br>prev YTD |
|              |              | FY 12-13     | FY 11-12     |                         |
| Central      | 144.2        | 159.9        | 159.8        | 0.0%                    |
| Northeast    | 116.6        | 119.6        | 109.4        | 9.3%                    |
| Southern     | 81.6         | 75.2         | 79.1         | -5.0%                   |
| Western      | 30.4         | 32.5         | 40.0         | -18.9%                  |
| <b>Total</b> | <b>372.8</b> | <b>387.2</b> | <b>388.4</b> | <b>-0.3%</b>            |

| By Region        | Parole Intakes |            | Parole Discharges |            | LOS        |
|------------------|----------------|------------|-------------------|------------|------------|
|                  | Monthly        | YTD        | Monthly           | YTD        |            |
| Central Region   | 12             | 49         | 26                | 74         | 6.9        |
| Northeast Region | 10             | 39         | 12                | 32         | 6.8        |
| Southern Region  | 10             | 37         | 8                 | 22         | 7.4        |
| Western Region   | 5              | 17         | 5                 | 18         | 5.0        |
| <b>TOTAL</b>     | <b>37</b>      | <b>142</b> | <b>51</b>         | <b>146</b> | <b>6.7</b> |

### Monthly Parole ADP

