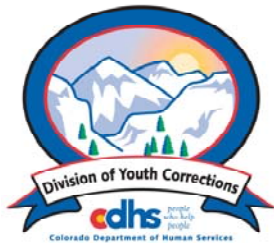


JUNE 2012 MONTHLY POPULATION REPORT FY 2011 - 2012

Prepared by the Division of Youth Corrections Research and Evaluation Unit July 18, 2012



Colorado Department of Human Services
Division of Youth Corrections

Working with Colorado Communities to Achieve Justice

June 2012 DYC Population Report

I.	Summary Population Data	1
II.	Detention ADP by Facility	2
III.	Commitment Services	
	A. State and Contract Secure ADP by Facility	3
	B. Community/Other Residential ADP by Facility	4
IV.	ADP and New Commitments by Region	5
V.	Parole Services	6

June 2012 DYC Population Report

I. Summary Population Data*

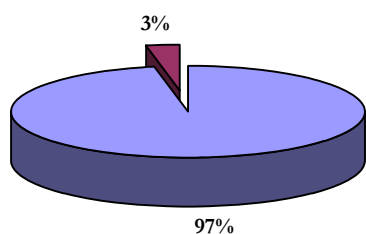
DETAINED YOUTH				
	June 2012		YTD	
	ADP	% change	ADP	LOS
State-Operated	331.9	2.8%	307.0	14.6 days
Contracted Staff Secure	6.8	-30.5%	9.4	17.8 days
Total Detained	338.7	1.8%	316.4	14.7 days

COMMITTED YOUTH				
	June 2012		YTD	
	ADP	% change	ADP	LOS
State Secure	397.0	-4.4%	432.3	8.4 months
Private Secure/Staff Supervised	392.7	0.8%	418.2	7.0 months
Community Residential	116.6	8.7%	121.3	2.7 mos
Other Residential	21.5	8.6%	11.2	6.1 days
Total Committed Residential	927.8	-0.1%	983.1	18.3 months
<i>Committed Residential w/o Boulder</i>	<i>923.5</i>	<i>0.2%</i>	<i>977.6</i>	<i>-</i>

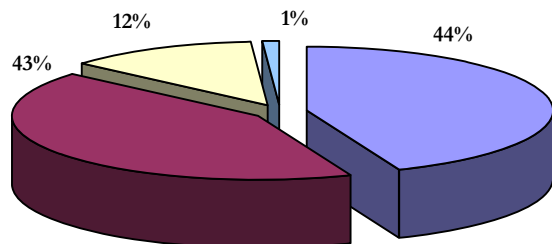
PAROLE YOUTH				
	June 2012		YTD	
	ADP	% change	ADP	LOS
Parole	369.8	5.4%	363.4	7.0 months

TOTAL STATEWIDE ADP				
	June 2012		YTD	
	ADP	% change	ADP	LOS
DETENTION	338.7	1.8%	316.4	14.7 days
COMMITMENT	927.8	-0.1%	983.1	18.3 months
PAROLE	369.8	5.4%	363.4	7.0 months
STATE TOTAL	1,636.3	1.5%	1,662.9	N/A

Detention ADP
Year to Date



Commitment ADP
Year to Date



■ State-Operated ■ Contracted Staff Secure

■ State Secure ■ Private Secure/Staff Supervised
■ Community Residential ■ Other Residential

*Due to rounding, totals shown may not be an exact sum of the subtotals

June 2012 DYC Population Report

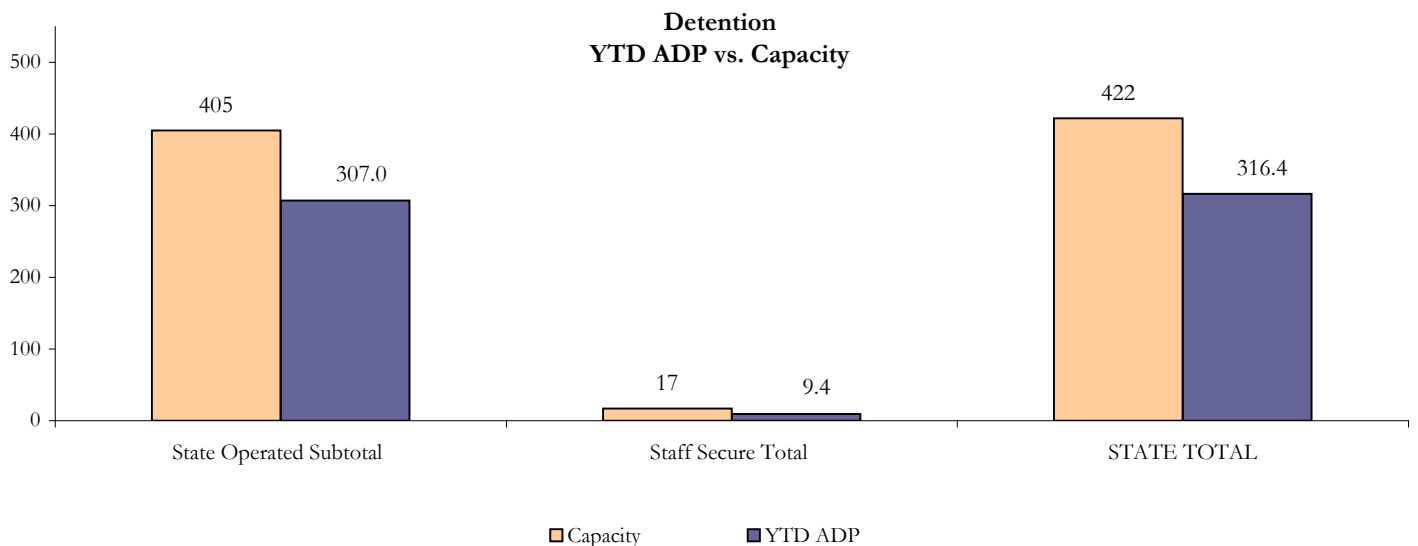
II. Detention ADP by Facility

State Operated Detention							
Facility	Operating Capacity*	Average Daily Population			New Admissions		LOS (days)
		Monthly	YTD	YTD % of Cap	Monthly	YTD	YTD
Adams	25	20.2	19.1	76.3%	48	554	12.8
Gilliam	64	57.4	55.2	86.3%	73	1,105	18.3
Grand Mesa	29	18.6	20.5	70.5%	39	388	18.5
Marvin Foote	80	72.1	57.1	71.4%	102	1,304	15.4
Mount View	51	36.1	32.8	64.2%	76	894	13.3
Platte Valley	69	61.6	55.6	80.6%	118	1,557	12.9
Pueblo	26	14.1	18.2	70.1%	57	584	11.5
Spring Creek	61	52.0	48.6	79.6%	78	1,171	14.6
State Subtotal	405	331.9	307.0	75.8%	591	7,557	14.6

Staff Secure Detention							
Facility	Operating Capacity*	Average Daily Population			New Admissions		LOS (days)
		Monthly	YTD	YTD % of Cap	Monthly	YTD	YTD
Brown Center	3	0.4	0.8	27.1%	1	17	17.3
Robert DeNier	10	4.9	5.6	56.0%	10	117	18.6
Youthtrack San Luis Valley	4	1.5	3.0	75.0%	5	61	16.4
Staff Secure Subtotal	17	6.8	9.4	55.4%	16	195	17.8

STATEWIDE TOTAL							
	Operating Capacity*	Average Daily Population			New Admissions		LOS (days)
		Monthly	YTD	YTD % of Cap	Monthly	YTD	YTD
Total Detention	422	338.7	316.4	75.0%	607	7,752	14.7

*New capacities for FY 2011-12 implemented July 1, 2011



June 2012 DYC Population Report

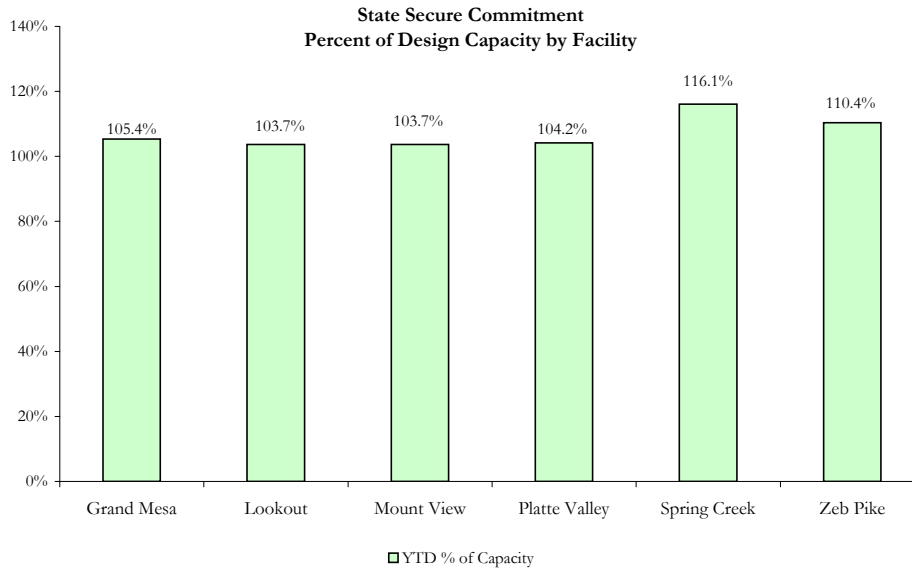
III. Commitment Services

A. State and Contract Secure ADP by Facility

STATE SECURE						
Facility	ADP		Capacity			
	State Secure		Design		Budgeted at 110%	
	June	YTD	Capacity	% of YTD	Capacity	% of YTD
Adams*	0.1	0.2	N/A	-	N/A	-
Gilliam*	0.0	0.4	N/A	-	N/A	-
Grand Mesa	43.3	42.1	40	105.4%	44	95.8%
Lookout	149.1	155.5	150	103.7%	163	95.4%
Marvin Foote	0.8	8.1	N/A	-	N/A	-
Mount View	63.2	71.5	69	103.7%	76	94.1%
Platte Valley	64.1	60.4	58	104.2%	66	91.6%
Pueblo*	0.2	0.3	N/A	-	N/A	-
Sol Vista	0.0	6.5	N/A	-	N/A	-
Spring Creek	40.7	47.6	41	116.1%	45	105.8%
Zeb Pike	35.6	39.7	36	110.4%	40	100.3%
GRAND TOTAL	397.0	432.3	394	109.7%	434	99.6%

*Detention Only facilities with commitment ADP due to detained youth being held prior to commitment

CONTRACT + STAFF SECURE		
Facility/Program	ADP	
	June	YTD
Alternative Homes For Youth - Greeley	10.5	10.8
Betty K. Marler Center	37.4	39.8
Brown Center	1.0	0.3
Childrens Ark	0.0	3.0
Childrens Ark at Pueblo	5.7	3.0
Devereux Cleo Wallace	17.8	23.8
Gateway Residential Program	0.0	1.0
Gateway Residential Program - Delta	4.4	2.2
Gateway Residential Program - Grand Junction	0.0	0.5
Hand Up Homes for Youth - West	0.0	0.7
Hilltop (Residential Youth Services)	4.2	3.6
Jefferson Hills	37.3	41.4
Ridge View	220.1	234.9
Robert DeNier	17.4	14.9
Southern Peaks	20.4	21.1
Third Way Center - Lowry	10.2	11.8
Turning Point Center Youth & Family	6.3	5.2
TOTAL	392.7	418.2



June 2012 DYC Population Report

III. Commitment Services Continued B. Community/Other Residential ADP by Facility

COMMUNITY RESIDENTIAL**		
	<i>Monthly</i>	<i>YTD</i>
Ariel Clinical Services	0.0	1.0
Boulder Community Treatment Center	0.0	0.1
Comcor	0.4	0.1
Community Corrections and Work Release	0.0	0.8
Dale House Project	10.7	11.0
Denver Area Youth Services (DAYS)	0.0	2.8
Gateway Residential Program - Grand Junction	4.6	1.8
Griffith Centers (SR)	5.0	6.0
Griffith Centers - Chins Up	0.0	0.5
Job Corps	5.0	4.5
Kids Crossing	0.0	1.3
Kidz Ark Sterling	0.0	0.2
Lost and Found Inc. Arvada	7.3	8.0
Lost and Found Inc. Independent Living	0.0	0.1
Mesa County Community Corrections	0.1	0.6
Mt Evans Qualifying House	12.2	12.1
Reflections For Youth Inc., Grismore	1.0	0.7
Reflections For Youth Inc., Prairie View	0.0	0.8
Savio House	3.3	1.9
Summit Treatment Service, Inc	7.3	10.4
Synergy Administration	8.3	7.1
Third Way Center	6.3	4.8
Third Way Center, Pontiac	6.6	6.4
Third Way Center, York	8.9	8.6
Third Way Center, Lincoln	8.6	8.7
Turning Point Center, Youth & Family	0.0	5.9
Turning Point Center, Prospect	5.5	0.4
Turning Point, Mathews St.	7.2	4.5
Whimspire Child Placement	0.0	2.0
Youthtrack, San Luis Valley	3.0	1.5
Youthtrack, Work and Learn	5.2	6.6
<i>Community Subtotal</i>	<i>116.6</i>	<i>121.3</i>
Contract/Staff Secure + Community Total	509.3	539.6
OTHER RESIDENTIAL		
	<i>Monthly</i>	<i>YTD</i>
CMHI-Ft.Logan	0.0	0.1
CMHI-Pueblo	0.6	0.8
Hospital	0.1	0.2
Immigration Detention Facility	1.3	0.9
Job Corps Parole Program (Federally funded)	3.0	3.7
Other Mental Health Facility	1.9	0.8
Residential Drug/Alcohol Program	0.0	0.3
Residential MH Program	1.9	1.8
Residential Work Program	0.0	0.4
Shelter Care (short term)	1.1	0.5
<i>Other Residential Total*</i>	<i>21.5</i>	<i>11.2</i>
RESIDENTIAL TOTAL	927.8	983.1

*Other Residential Total may not accurately sum due to Trails-related issues

** Note that Kids Ark New Ramer Ranch and Maple Star Colorado have minimal YTD ADP (0.04), which for rounding purposes is 0 ADP which is why they are not included above. However, there is a minimal amount of YTD ADP.

June 2012 DYC Population Report

IV. ADP and New Commitments by Region

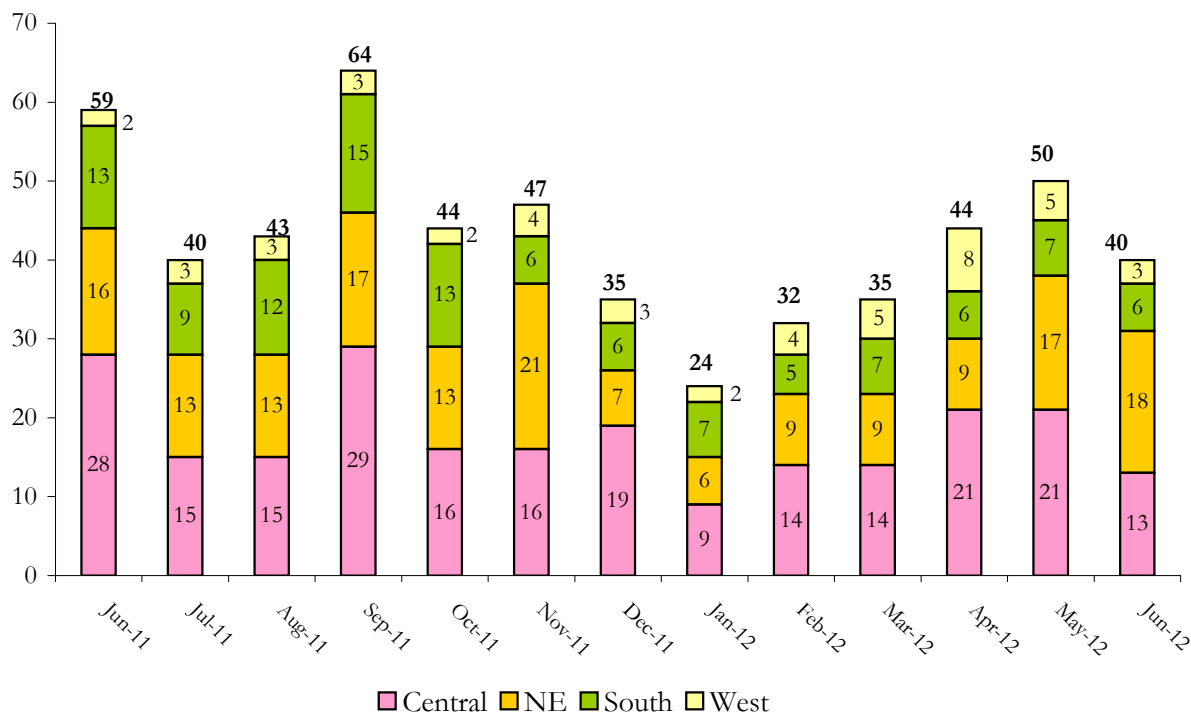
COMMITMENT ADP

Region	Monthly		YTD
	June	% Change	
Central Region	387.2	0.0%	411.1
Northeast Region	239.6	-1.7%	262.3
Southern Region	191.5	-1.5%	206.9
Western Region	109.4	6.6%	102.8
Commitment ADP Total	927.8	-0.1%	983.1

NEW COMMITMENTS

By Region	FY 11-12		FY 10-11		% Change fm last YTD
	June	YTD	June	YTD	
<i>Central Region</i>	13	216	28	254	-15.0%
<i>Northeast Region</i>	18	159	16	178	-10.7%
<i>Southern Region</i>	6	106	13	140	-24.3%
<i>Western Region</i>	3	51	2	73	-30.1%
TOTAL	40	532	59	645	-17.5%

Monthly New Commitments



June 2012 DYC Population Report

V. Parole Services

Parole ADP				
Region	June	YTD		% Change fm prev YTD
		FY 11-12	FY 10-11	
Central	164.3	164.0	187.0	-12.3%
Northeast	107.3	97.4	111.4	-12.6%
Southern	67.5	67.5	80.9	-16.5%
Western	30.7	34.5	39.1	-11.9%
Total	369.8	363.4	418.4	-13.1%

By Region	Parole Intakes		Parole Discharges		LOS
	June	YTD	June	YTD	
Central Region	26	272	17	277	7.3
Northeast Region	16	180	12	181	6.5
Southern Region	8	106	3	128	6.9
Western Region	5	57	3	61	7.0
TOTAL	55	615	35	647	7.0

Monthly Parole ADP

