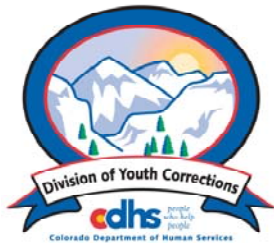


# MAY 2012 MONTHLY POPULATION REPORT FY 2011 - 2012

---

Prepared by the Division of Youth Corrections Research and Evaluation Unit June 12, 2012



Colorado Department of Human Services  
Division of Youth Corrections

---

Working with Colorado Communities to Achieve Justice

# May 2012

## DYC Population Report

<b>I.</b>	<b>Summary Population Data</b>	<b>1</b>
<b>II.</b>	<b>Detention ADP by Facility</b>	<b>2</b>
<b>III.</b>	<b>Commitment Services</b>	
	A. State and Contract Secure ADP by Facility	3
	B. Community/Other Residential ADP by Facility	4
<b>IV.</b>	<b>ADP and New Commitments by Region</b>	<b>5</b>
<b>V.</b>	<b>Parole Services</b>	<b>6</b>

# May 2012 DYC Population Report

## I. Summary Population Data\*

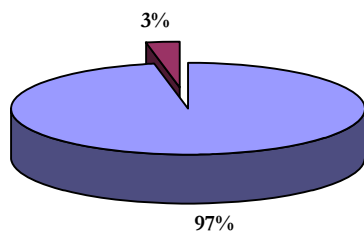
DETAINED YOUTH				
	May 2012		YTD	
	ADP	% change	ADP	LOS
State-Operated	322.9	0.8%	305.0	14.5 days
Contracted Staff Secure	9.7	-21.5%	9.7	17.6 days
<b>Total Detained</b>	<b>332.6</b>	<b>0.0%</b>	<b>314.7</b>	<b>14.6 days</b>

COMMITTED YOUTH				
	May 2012		YTD	
	ADP	% change	ADP	LOS
State Secure	411.6	18.0%	435.8	8.4 months
Private Secure/Staff Supervised	389.6	0.0%	420.6	7.0 months
Community Residential	107.3	-11.3%	120.6	2.6 mos
Other Residential	19.8	6.2%	11.7	5.7 days
<b>Total Committed Residential</b>	<b>928.3</b>	<b>-1.8%</b>	<b>988.8</b>	<b>18.2 months</b>
<i>Committed Residential w/o Boulder</i>	<i>921.8</i>	<i>-1.9%</i>	<i>983.2</i>	<i>-</i>

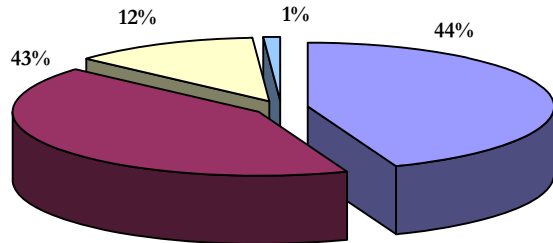
PAROLE YOUTH				
	May 2012		YTD	
	ADP	% change	ADP	LOS
Parole	350.8	5.3%	363.0	6.8 months

TOTAL STATEWIDE ADP				
	May 2012		YTD	
	ADP	% change	ADP	LOS
<b>DETENTION</b>	<b>332.6</b>	<b>0.0%</b>	<b>314.7</b>	<b>14.6 days</b>
<b>COMMITMENT</b>	<b>928.3</b>	<b>-1.8%</b>	<b>988.8</b>	<b>18.2 months</b>
<b>PAROLE</b>	<b>350.8</b>	<b>5.3%</b>	<b>363.0</b>	<b>6.8 months</b>
<b>STATE TOTAL</b>	<b>1,611.7</b>	<b>0.1%</b>	<b>1,666.4</b>	<b>N/A</b>

Detention ADP  
Year to Date



Commitment ADP  
Year to Date



■ State-Operated ■ Contracted Staff Secure

■ State Secure ■ Private Secure/Staff Supervised  
■ Community Residential ■ Other Residential

\*Due to rounding, totals shown may not be an exact sum of the subtotals

# May 2012 DYC Population Report

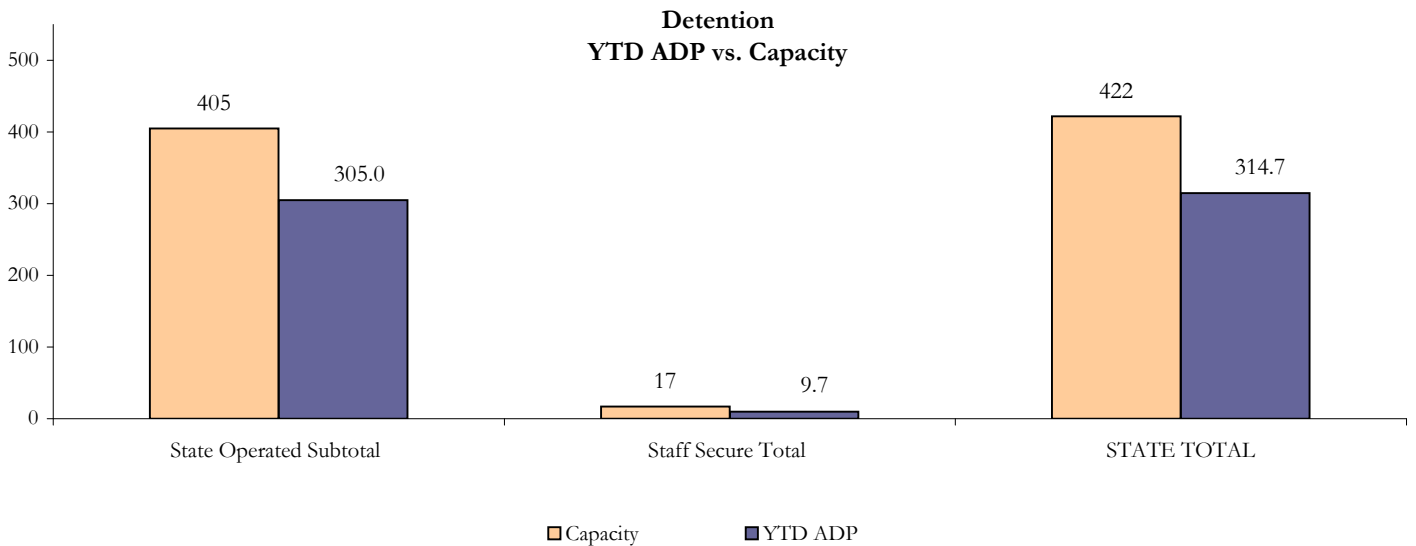
## II. Detention ADP by Facility

State Operated Detention							
Facility	Operating Capacity*	Average Daily Population			New Admissions		LOS (days)
		Monthly	YTD	YTD % of Cap	Monthly	YTD	YTD
Adams	25	19.3	19.0	75.9%	76	506	12.9
Gilliam	64	59.9	55.0	85.9%	99	1,032	17.9
Grand Mesa	29	16.6	20.6	71.1%	34	349	19.1
Marvin Foote	80	60.0	55.8	69.7%	138	1,202	15.4
Mount View	51	40.4	32.5	63.7%	102	818	13.2
Platte Valley	69	59.7	55.3	80.1%	129	1,443	12.8
Pueblo	26	13.8	18.6	71.6%	34	527	11.9
Spring Creek	61	53.2	48.2	79.1%	95	1,093	14.2
<b>State Subtotal</b>	<b>405</b>	<b>322.9</b>	<b>305.0</b>	<b>75.3%</b>	<b>707</b>	<b>6,970</b>	<b>14.5</b>

Staff Secure Detention							
Facility	Operating Capacity*	Average Daily Population			New Admissions		LOS (days)
		Monthly	YTD	YTD % of Cap	Monthly	YTD	YTD
Brown Center	3	0.8	0.9	28.5%	2	16	18.3
Robert DeNier	10	5.5	5.7	56.7%	8	107	18.0
Youthtrack San Luis Valley	4	3.5	3.1	78.3%	3	56	16.5
<b>Staff Secure Subtotal</b>	<b>17</b>	<b>9.7</b>	<b>9.7</b>	<b>56.8%</b>	<b>13</b>	<b>179</b>	<b>17.6</b>

STATEWIDE TOTAL							
	Operating Capacity*	Average Daily Population			New Admissions		LOS (days)
		Monthly	YTD	YTD % of Cap	Monthly	YTD	YTD
<b>Total Detention</b>	<b>422</b>	<b>332.6</b>	<b>314.7</b>	<b>74.6%</b>	<b>720</b>	<b>7,149</b>	<b>14.6</b>

\*New capacities for FY 2011-12 implemented July 1, 2011



# May 2012 DYC Population Report

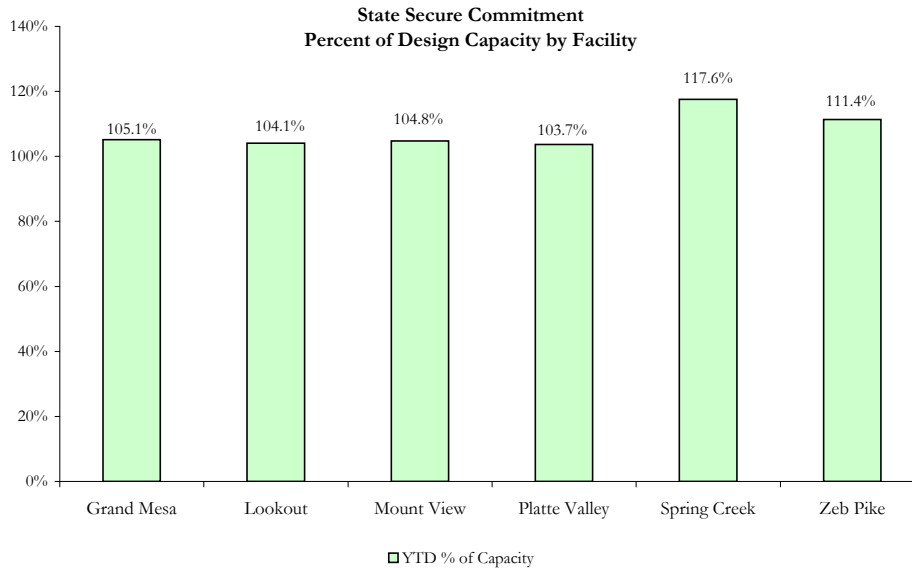
## III. Commitment Services

### A. State and Contract Secure ADP by Facility

STATE SECURE						
Facility	ADP		Capacity			
	State Secure		Design		Budgeted at 110%	
	May	YTD	Capacity	% of YTD	Capacity	% of YTD
Adams*	0.1	0.2	N/A	-	N/A	-
Gilliam*	0.1	0.4	N/A	-	N/A	-
Grand Mesa	44.4	42.1	40	105.1%	44	95.6%
Lookout	148.5	156.1	150	104.1%	163	95.8%
Marvin Foote	1.1	8.7	N/A	-	N/A	-
Mount View	72.4	72.3	69	104.8%	76	95.1%
Platte Valley	63.8	60.1	58	103.7%	66	91.1%
Pueblo*	1.5	0.3	N/A	-	N/A	-
Sol Vista	0.0	7.0	N/A	-	N/A	-
Spring Creek	41.4	48.2	41	117.6%	45	107.1%
Zeb Pike	38.5	40.1	36	111.4%	40	101.3%
<b>GRAND TOTAL</b>	<b>411.6</b>	<b>435.8</b>	<b>394</b>	<b>110.6%</b>	<b>434</b>	<b>100.4%</b>

\*Detention Only facilities with commitment ADP due to detained youth being held prior to commitment

CONTRACT + STAFF SECURE		
Facility/Program	ADP	
	May	YTD
Alternative Homes For Youth - Greeley	11.9	10.8
Betty K. Marler Center	36.9	40.1
Brown Center	1.7	0.3
Childrens Ark	0.0	3.2
Childrens Ark at Pueblo	5.1	2.8
Devereux Cleo Wallace	19.5	24.4
Gateway Residential Program	0.0	1.1
Gateway Residential Program - Delta	3.9	2.0
Gateway Residential Program - Grand Junction	0.0	0.5
Hand Up Homes for Youth - West	0.0	0.8
Hilltop (Residential Youth Services)	3.6	3.5
Jefferson Hills	38.5	41.8
Ridge View	214.0	236.3
Robert DeNier	13.6	14.7
Southern Peaks	18.7	21.2
Third Way Center - Lowry	12.0	12.1
Turning Point Center Youth & Family	10.2	5.1
<b>TOTAL</b>	<b>389.6</b>	<b>420.6</b>



# May 2012 DYC Population Report

## III. Commitment Services Continued B. Community/Other Residential ADP by Facility

<b>COMMUNITY RESIDENTIAL</b>		
	<i>Monthly</i>	<i>YTD</i>
Ariel Clinical Services	0.0	0.8
Boulder Community Treatment Center	0.0	0.1
Comcor	0.0	0.1
Community Corrections and Work Release	0.7	0.9
Dale House Project	12.1	11.0
Denver Area Youth Services (DAYS)	0.0	2.8
Gateway Residential Program - Grand Junction	4.1	1.6
Griffith Centers (SR)	5.1	6.1
Griffith Centers - Chins Up	0.0	0.4
Job Corps	4.7	4.5
Kids Crossing	0.0	1.2
Kidz Ark Sterling	0.0	0.2
Kidz Ark New Raymer Ranch	0.0	0.0
Lost and Found Inc. Arvada	6.8	8.1
Lost and Found Inc. Independent Living	0.0	0.1
Maple Star	0.0	0.0
Mesa County Community Corrections	1.0	0.7
Mt Evans Qualifying House	12.5	12.0
Reflections For Youth Inc., Grismore	1.0	0.7
Reflections For Youth Inc., Prairie View	0.0	0.9
Savio House	2.3	1.8
Summit Treatment Service, Inc	7.1	10.7
Synergy Administration	8.0	7.0
Third Way Center	5.1	4.7
Third Way Center, Pontiac	6.0	6.3
Third Way Center, York	8.3	8.5
Third Way Center, Lincoln	6.1	8.7
Turning Point Center Youth & Family	0.0	6.4
Turning Point, Mathews St.	8.0	4.2
Whimspire Child Placement	0.0	2.0
Youthtrack, San Luis Valley	2.5	1.4
Youthtrack, Work and Learn	5.9	6.7
<i>Community Subtotal</i>	<i>107.3</i>	<i>120.6</i>
<b><i>Contract/Staff Secure + Community Total</i></b>	<b><i>496.9</i></b>	<b><i>541.2</i></b>
<b>OTHER RESIDENTIAL</b>		
	<i>Monthly</i>	<i>YTD</i>
CMHI-Ft.Logan	0.0	0.1
CMHI-Pueblo	0.7	0.8
Hospital	0.0	0.2
Immigration Detention Facility	1.6	0.8
Job Corps Parole Program (Federally funded)	2.7	3.8
Other Mental Health Facility	1.8	0.7
Residential Drug/Alcohol Program	0.0	0.3
Residential MH Program	3.0	2.2
Residential Work Program	0.0	0.4
Shelter Care (short term)	0.0	0.5
<i>Other Residential Total*</i>	<i>19.8</i>	<i>11.7</i>
<b>RESIDENTIAL TOTAL</b>	<b>928.3</b>	<b>988.8</b>

\*Other Residential Total may not accurately sum due to Trails-related issues

# May 2012 DYC Population Report

## IV. ADP and New Commitments by Region

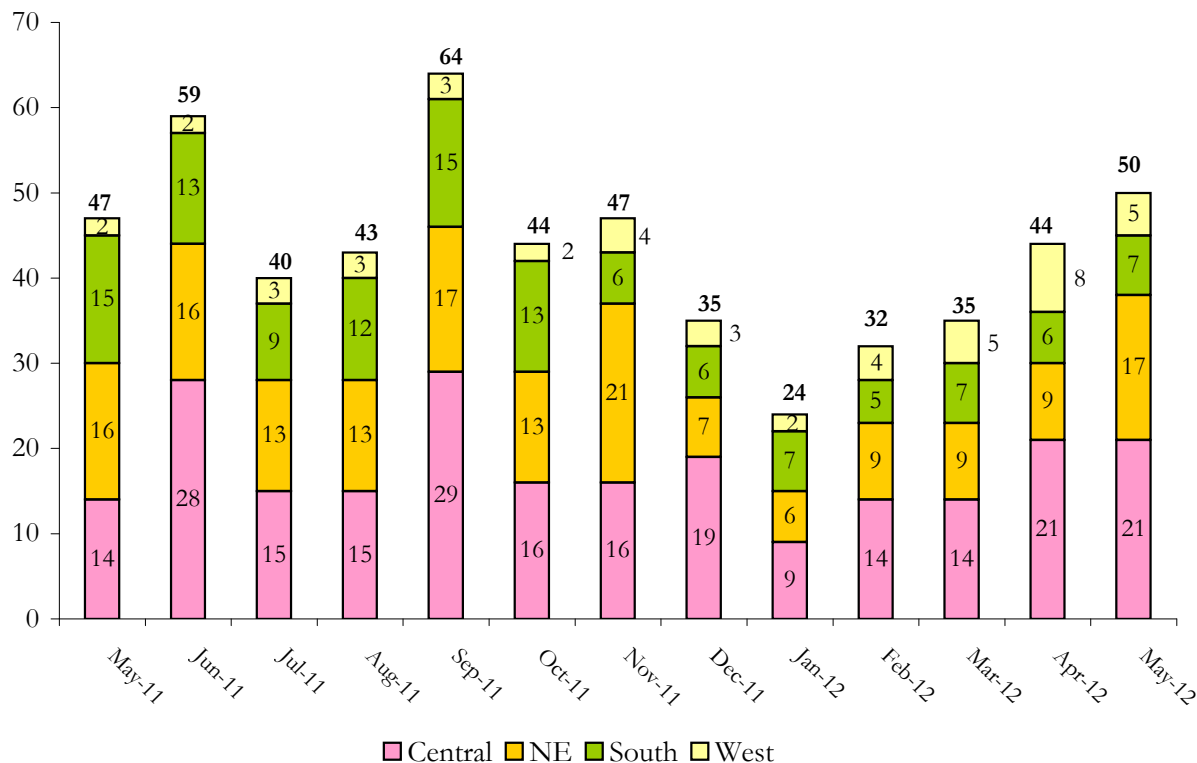
### COMMITMENT ADP

Region	Monthly		YTD
	May	% Change	
Central Region	387.3	-1.4%	413.3
Northeast Region	243.9	-3.2%	266.0
Southern Region	194.5	-4.0%	207.3
Western Region	102.6	5.5%	102.1
<b>Commitment ADP Total</b>	<b>928.3</b>	<b>-1.8%</b>	<b>988.8</b>

### NEW COMMITMENTS

By Region	FY 11-12		FY 10-11		<i>% Change fm last YTD</i>
	May	YTD	May	YTD	
<i>Central Region</i>	21	198	14	226	-12.4%
<i>Northeast Region</i>	17	142	16	160	-11.3%
<i>Southern Region</i>	7	100	15	127	-21.3%
<i>Western Region</i>	5	47	2	70	-32.9%
<b>TOTAL</b>	<b>50</b>	<b>487</b>	<b>47</b>	<b>583</b>	<b>-16.5%</b>

**Monthly New Commitments**



# May 2012 DYC Population Report

## V. Parole Services

Parole ADP				
Region	May	YTD		% Change fm prev YTD
		FY 11-12	FY 10-11	
Central	162.6	164.0	187.9	-12.7%
Northeast	99.3	96.8	112.8	-14.1%
Southern	60.3	67.3	81.9	-17.8%
Western	28.6	34.8	39.7	-12.3%
<b>Total</b>	<b>350.8</b>	<b>363.0</b>	<b>422.3</b>	<b>-14.1%</b>

By Region	Parole Intakes		Parole Discharges		LOS
	May	YTD	May	YTD	
Central Region	17	244	26	258	7.2
Northeast Region	22	163	11	168	6.5
Southern Region	11	97	11	124	6.8
Western Region	4	52	5	58	6.8
<b>TOTAL</b>	<b>54</b>	<b>556</b>	<b>53</b>	<b>608</b>	<b>6.8</b>

### Monthly Parole ADP

