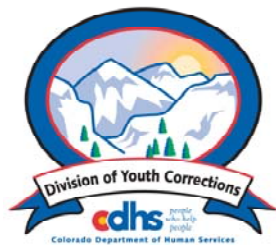


APRIL 2012 MONTHLY POPULATION REPORT FY 2011 - 2012

Prepared by the Division of Youth Corrections Research and Evaluation Unit May 18, 2012



Colorado Department of Human Services
Division of Youth Corrections

Working with Colorado Communities to Achieve Justice

April 2012

DYC Population Report

I.	Summary Population Data	1
II.	Detention ADP by Facility	2
III.	Commitment Services	
	A. State and Contract Secure ADP by Facility	3
	B. Community/Other Residential ADP by Facility	4
IV.	ADP and New Commitments by Region	5
V.	Parole Services	6

April 2012 DYC Population Report

I. Summary Population Data*

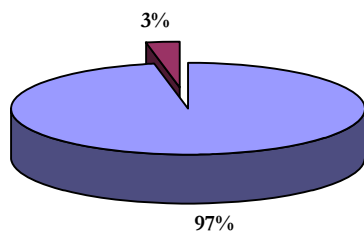
DETAINED YOUTH				
	April 2012		YTD	
	ADP	% change	ADP	LOS
State-Operated	320.2	4.9%	303.1	14.6 days
Contracted Staff Secure	12.4	21.5%	9.6	17.0 days
Total Detained	332.6	5.4%	312.7	14.7 days

COMMITTED YOUTH				
	April 2012		YTD	
	ADP	% change	ADP	LOS
State Secure	415.7	15.2%	439.1	8.3 months
Private Secure/Staff Supervised	389.7	-2.1%	422.2	7.0 months
Community Residential	121.0	-2.3%	123.0	2.7 mos
Other Residential	18.6	-0.8%	12.0	5.8 days
Total Committed Residential	944.9	-2.4%	996.3	18.1 months
<i>Committed Residential w/o Boulder</i>	<i>939.3</i>	<i>-2.4%</i>	<i>990.8</i>	<i>-</i>

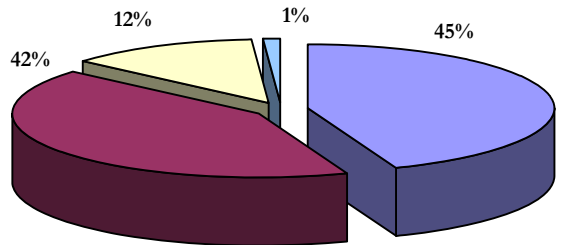
PAROLE YOUTH				
	April 2012		YTD	
	ADP	% change	ADP	LOS
Parole	333.3	2.5%	363.7	6.7 months

TOTAL STATEWIDE ADP				
	April 2012		YTD	
	ADP	% change	ADP	LOS
DETENTION	332.6	5.4%	312.7	14.7 days
COMMITMENT	944.9	-2.4%	996.3	18.1 months
PAROLE	333.3	2.5%	363.7	6.7 months
STATE TOTAL	1,610.8	0.1%	1,672.7	N/A

Detention ADP
Year to Date



Commitment ADP
Year to Date



■ State-Operated ■ Contracted Staff Secure

■ State Secure ■ Private Secure/Staff Supervised
■ Community Residential ■ Other Residential

*Due to rounding, totals shown may not be an exact sum of the subtotals

April 2012 DYC Population Report

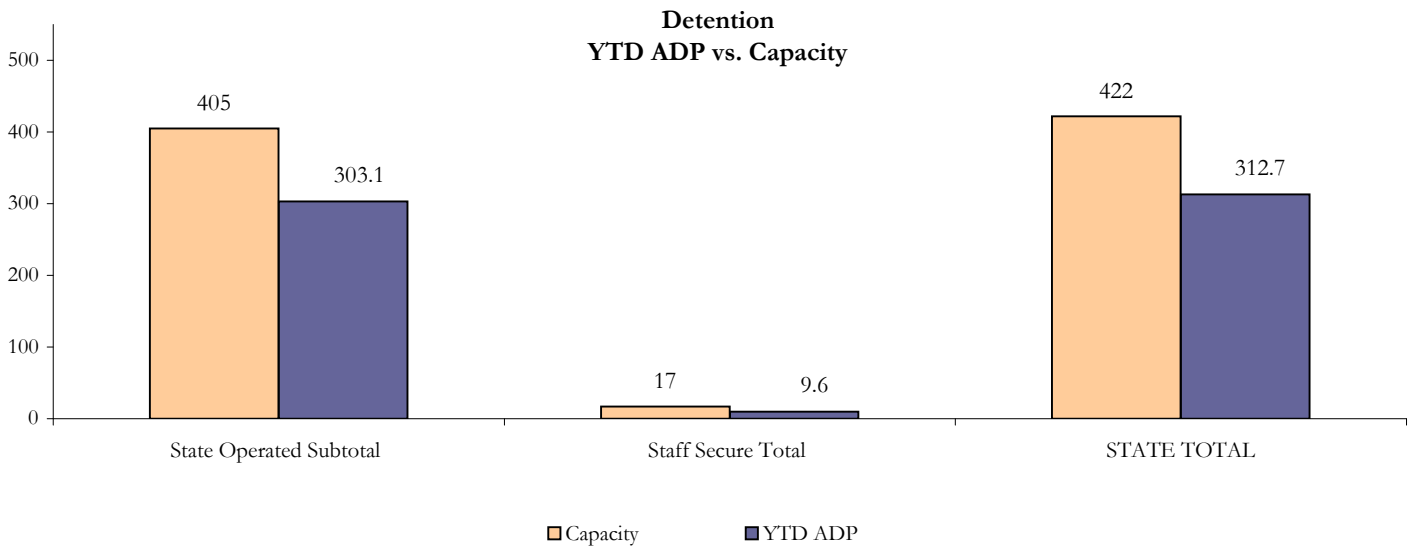
II. Detention ADP by Facility

State Operated Detention							
Facility	Operating Capacity*	Average Daily Population			New Admissions		LOS (days)
		Monthly	YTD	YTD % of Cap	Monthly	YTD	YTD
Adams	25	19.9	18.9	75.8%	54	430	13.6
Gilliam	64	53.7	54.5	85.2%	102	933	18.0
Grand Mesa	29	21.3	20.9	72.1%	34	315	19.5
Marvin Foote	80	56.7	55.4	69.2%	136	1,064	15.6
Mount View	51	34.8	31.7	62.1%	108	717	13.7
Platte Valley	69	61.6	54.9	79.5%	144	1,314	12.6
Pueblo	26	18.7	19.1	73.4%	52	493	11.9
Spring Creek	61	53.4	47.7	78.3%	106	998	14.2
State Subtotal	405	320.2	303.1	74.8%	736	6,264	14.6

Staff Secure Detention							
Facility	Operating Capacity*	Average Daily Population			New Admissions		LOS (days)
		Monthly	YTD	YTD % of Cap	Monthly	YTD	YTD
Brown Center	3	1.4	0.9	28.8%	1	14	18.5
Robert DeNier	10	7.6	5.7	56.9%	8	99	16.9
Youthtrack San Luis Valley	4	3.4	3.1	77.3%	4	53	17.0
Staff Secure Subtotal	17	12.4	9.6	56.7%	13	166	17.0

STATEWIDE TOTAL							
	Operating Capacity*	Average Daily Population			New Admissions		LOS (days)
		Monthly	YTD	YTD % of Cap	Monthly	YTD	YTD
Total Detention	422	332.6	312.7	74.1%	749	6,430	14.7

*New capacities for FY 2011-12 implemented July 1, 2011



April 2012 DYC Population Report

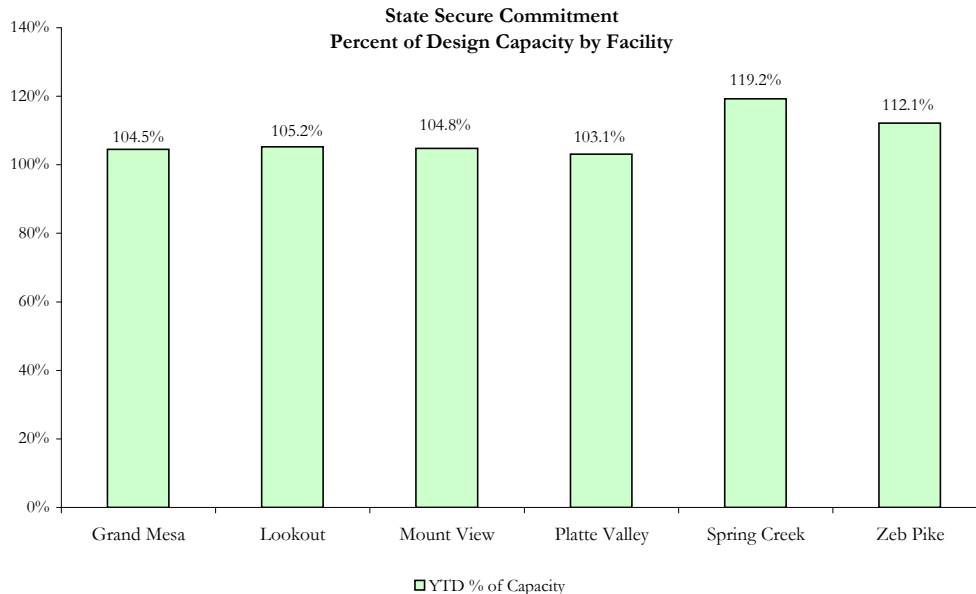
III. Commitment Services

A. State and Contract Secure ADP by Facility

STATE SECURE						
Facility	ADP		Capacity			
	State Secure		Design		Budgeted at 110%	
	April	YTD	Capacity	% of YTD	Capacity	% of YTD
Adams*	0.1	0.2	N/A	-	N/A	-
Gilliam*	0.1	0.5	N/A	-	N/A	-
Grand Mesa	43.8	41.8	40	104.5%	44	95.0%
Lookout	152.1	157.9	150	105.2%	163	96.8%
Marvin Foote	0.5	9.5	N/A	-	N/A	-
Mount View	73.6	72.3	69	104.8%	76	95.1%
Platte Valley	60.3	59.8	58	103.1%	66	90.6%
Pueblo*	0.0	0.2	N/A	-	N/A	-
Sol Vista	0.0	7.7	N/A	-	N/A	-
Spring Creek	45.5	48.9	41	119.2%	45	108.6%
Zeb Pike	39.7	40.4	36	112.1%	40	101.9%
GRAND TOTAL	415.7	439.1	394	111.4%	434	101.2%

*Detention Only facilities with commitment ADP due to detained youth being held prior to commitment

CONTRACT + STAFF SECURE		
Facility/Program	ADP	
	April	YTD
Alternative Homes For Youth - Greeley	11.7	10.7
Betty K. Marler Center	38.6	40.4
Brown Center	0.4	0.1
Childrens Ark	0.0	3.5
Childrens Ark at Pueblo	6.8	2.5
Devereux Cleo Wallace	20.4	24.9
Gateway Residential Program	0.0	1.2
Gateway Residential Program - Grand Junction	0.0	0.6
Hand Up Homes for Youth - West	0.1	0.9
Hilltop (Residential Youth Services)	3.0	3.5
Jefferson Hills	41.4	42.1
Ridge View	217.3	238.6
Robert DeNier	10.6	14.8
Southern Peaks	20.8	21.4
Third Way Center - Lowry	9.8	12.4
Turning Point Center Youth & Family	8.8	4.6
TOTAL	389.7	422.2



April 2012

DYC Population Report

III. Commitment Services Continued

B. Community/Other Residential ADP by Facility

COMMUNITY RESIDENTIAL		
	<i>Monthly</i>	<i>YTD</i>
Ariel Clinical Services	0.0	0.8
Boulder Community Treatment Center	0.0	0.1
Community Corrections and Work Release	1.0	1.0
Dale House Project	12.4	10.9
Denver Area Youth Services (DAYS)	0.0	2.8
Gateway Residential Program - Delta	1.0	1.5
Gateway Residential Program - Grand Junction	5.6	1.7
Griffith Centers (SR)	6.2	6.2
Griffith Centers - Chins Up	0.0	0.4
Job Corps	7.0	4.4
Kids Crossing	0.0	1.1
Kidz Ark Sterling	0.0	0.2
Kidz Ark New Raymer Ranch	0.0	0.0
Lost and Found Inc. Arvada	7.3	8.2
Lost and Found Inc. Independent Living	0.0	0.1
Maple Star	0.0	0.1
Mesa County Community Corrections	1.0	0.7
Mt Evans Qualifying House	14.7	12.0
Reflections For Youth Inc., Grismore	1.0	0.7
Reflections For Youth Inc., Prairie View	1.0	1.3
Savio House	1.4	1.8
Summit Treatment Service, Inc	9.3	11.0
Synergy Administration	8.6	6.8
Third Way Center	4.9	4.7
Third Way Center, Pontiac	6.7	6.5
Third Way Center, York	10.1	8.6
Third Way Center, Lincoln	6.8	8.7
Turning Point Center Youth & Family	0.0	7.1
Turning Point, Mathews St.	7.6	3.8
Whimspire Child Placement	0.0	1.9
Youthtrack, San Luis Valley	1.1	1.3
Youthtrack, Work and Learn	6.4	6.8
<i>Community Subtotal</i>	<i>121.0</i>	<i>123.0</i>
Contract/Staff Secure + Community Total	510.7	545.3
OTHER RESIDENTIAL		
	<i>Monthly</i>	<i>YTD</i>
CMHI-Ft.Logan	0.8	0.2
CMHI-Pueblo	0.6	0.8
Hospital	1.0	0.4
Immigration Detention Facility	2.0	0.7
Job Corps Parole Program (Federally funded)	1.6	3.9
Other Mental Health Facility	1.0	0.6
Residential Drug/Alcohol Program	0.0	0.3
Residential MH Program	2.0	1.8
Residential Work Program	0.0	0.4
Shelter Care (short term)	0.0	0.5
<i>Other Residential Total*</i>	<i>18.6</i>	<i>12.0</i>
RESIDENTIAL TOTAL	944.9	996.3

*Other Residential Total may not accurately sum due to Trails-related issues

April 2012 DYC Population Report

IV. ADP and New Commitments by Region

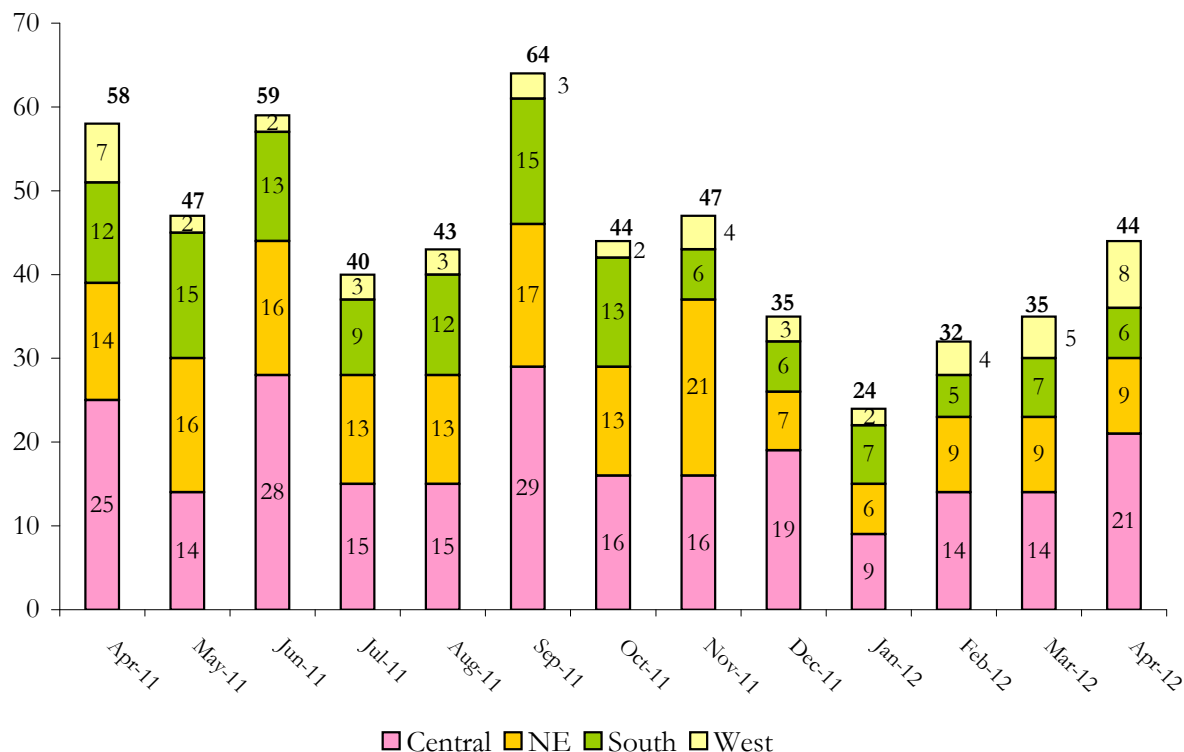
COMMITMENT ADP

Region	Monthly		YTD
	April	% Change	
Central Region	393.0	-1.9%	415.8
Northeast Region	252.0	-3.3%	269.6
Southern Region	202.7	-2.4%	208.9
Western Region	97.2	-2.2%	102.0
Commitment ADP Total	944.9	-2.4%	996.3

NEW COMMITMENTS

By Region	FY 11-12		FY 10-11		% Change fm last YTD
	April	YTD	April	YTD	
<i>Central Region</i>	21	177	25	211	-16.1%
<i>Northeast Region</i>	9	124	14	144	-13.9%
<i>Southern Region</i>	6	93	12	112	-17.0%
<i>Western Region</i>	8	42	7	69	-39.1%
TOTAL	44	436	58	536	-18.7%

Monthly New Commitments



April 2012 DYC Population Report

V. Parole Services

Parole ADP				
Region	April	YTD		% Change fm prev YTD
		FY 11-12	FY 10-11	
Central	157.6	164.0	190.0	-13.7%
Northeast	89.1	97.3	112.5	-13.5%
Southern	57.1	67.2	81.9	-18.0%
Western	29.4	35.2	41.2	-14.5%
Total	333.3	363.7	425.6	-14.6%

By Region	Parole Intakes		Parole Discharges		LOS
	April	YTD	April	YTD	
Central Region	26	224	18	230	7.0
Northeast Region	19	141	7	157	6.2
Southern Region	14	84	10	113	6.7
Western Region	3	47	5	52	6.8
TOTAL	62	496	40	552	6.7

Monthly Parole ADP

