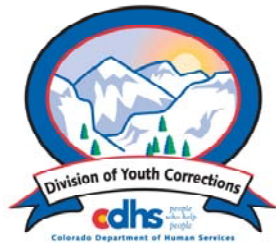


MARCH 2012 MONTHLY POPULATION REPORT FY 2011 - 2012

Prepared by the Division of Youth Corrections Research and Evaluation Unit April 18, 2012



Colorado Department of Human Services
Division of Youth Corrections

Working with Colorado Communities to Achieve Justice

March 2012 DYC Population Report

I.	Summary Population Data	1
II.	Detention ADP by Facility	2
III.	Commitment Services	
	A. State and Contract Secure ADP by Facility	3
	B. Community/Other Residential ADP by Facility	4
IV.	ADP and New Commitments by Region	5
V.	Parole Services	6

March 2012 DYC Population Report

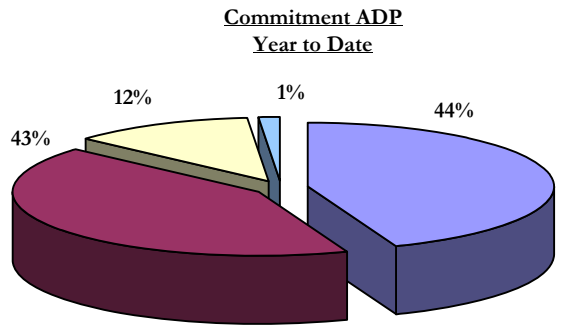
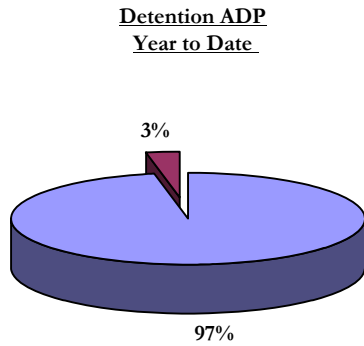
I. Summary Population Data*

DETAINED YOUTH				
	March 2012		YTD	
	ADP	% change	ADP	LOS
State-Operated	305.3	8.0%	301.2	14.7 days
Contracted Staff Secure	10.2	9.4%	9.3	16.1 days
Total Detained	315.5	8.1%	310.6	14.8 days

COMMITTED YOUTH				
	March 2012		YTD	
	ADP	% change	ADP	LOS
State Secure	427.5	17.7%	441.6	8.4 months
Private Secure/Staff Supervised	398.2	-2.5%	425.8	6.7 months
Community Residential	123.8	-1.6%	121.3	2.7 mos
Other Residential	18.8	-1.9%	12.9	6.1 days
Total Committed Residential	968.3	-2.3%	1,001.7	18.1 months
<i>Committed Residential w/o Boulder</i>	<i>962.3</i>	<i>-2.1%</i>	<i>996.1</i>	-

PAROLE YOUTH				
	March 2012		YTD	
	ADP	% change	ADP	LOS
Parole	325.0	-1.3%	367.2	6.7 months

TOTAL STATEWIDE ADP				
	March 2012		YTD	
	ADP	% change	ADP	LOS
DETENTION	315.5	8.1%	310.6	14.8 days
COMMITMENT	968.3	-2.3%	1,001.7	18.1 months
PAROLE	325.0	-1.3%	367.2	6.7 months
STATE TOTAL	1,608.9	-0.2%	1,679.5	N/A



■ State-Operated
 ■ Contracted Staff Secure

■ State Secure
 ■ Private Secure/Staff Supervised
■ Community Residential
 ■ Other Residential

*Due to rounding, totals shown may not be an exact sum of the subtotals

March 2012 DYC Population Report

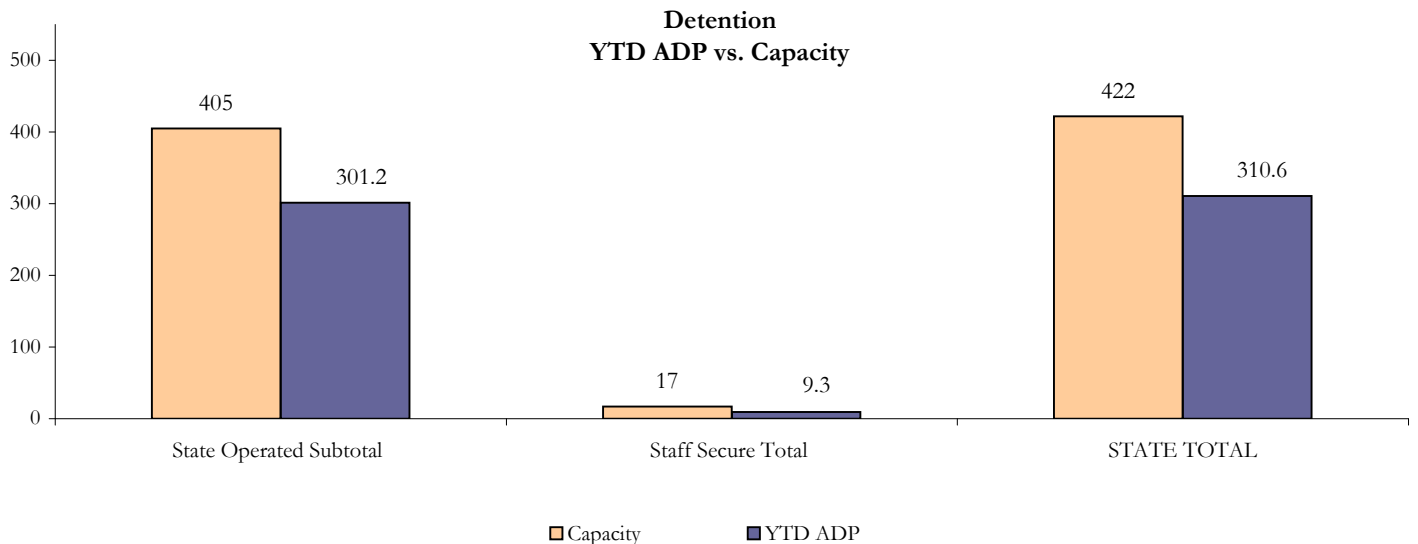
II. Detention ADP by Facility

State Operated Detention							
Facility	Operating Capacity*	Average Daily Population			New Admissions		LOS (days)
		Monthly	YTD	YTD % of Cap	Monthly	YTD	YTD
Adams	25	19.6	18.8	75.3%	53	376	13.6
Gilliam	64	52.6	54.6	85.3%	109	831	18.0
Grand Mesa	29	22.0	20.9	72.0%	37	281	18.6
Marvin Foote	80	54.5	55.2	69.0%	120	928	15.9
Mount View	51	24.3	31.3	61.4%	81	610	14.3
Platte Valley	69	61.5	54.1	78.4%	138	1,170	12.5
Pueblo	26	19.9	19.1	73.6%	75	441	12.3
Spring Creek	61	50.9	47.1	77.2%	95	891	14.2
State Subtotal	405	305.3	301.2	74.4%	708	5,528	14.7

Staff Secure Detention							
Facility	Operating Capacity*	Average Daily Population			New Admissions		LOS (days)
		Monthly	YTD	YTD % of Cap	Monthly	YTD	YTD
Brown Center	3	0.3	0.8	26.7%	2	13	17.9
Robert DeNier	10	6.0	5.5	54.8%	12	91	16.5
Youthtrack San Luis Valley	4	4.0	3.1	76.5%	2	49	15.0
Staff Secure Subtotal	17	10.2	9.3	55.0%	16	153	16.1

STATEWIDE TOTAL							
	Operating Capacity*	Average Daily Population			New Admissions		LOS (days)
		Monthly	YTD	YTD % of Cap	Monthly	YTD	YTD
Total Detention	422	315.5	310.6	73.6%	724	5,681	14.8

*New capacities for FY 2011-12 implemented July 1, 2011



March 2012 DYC Population Report

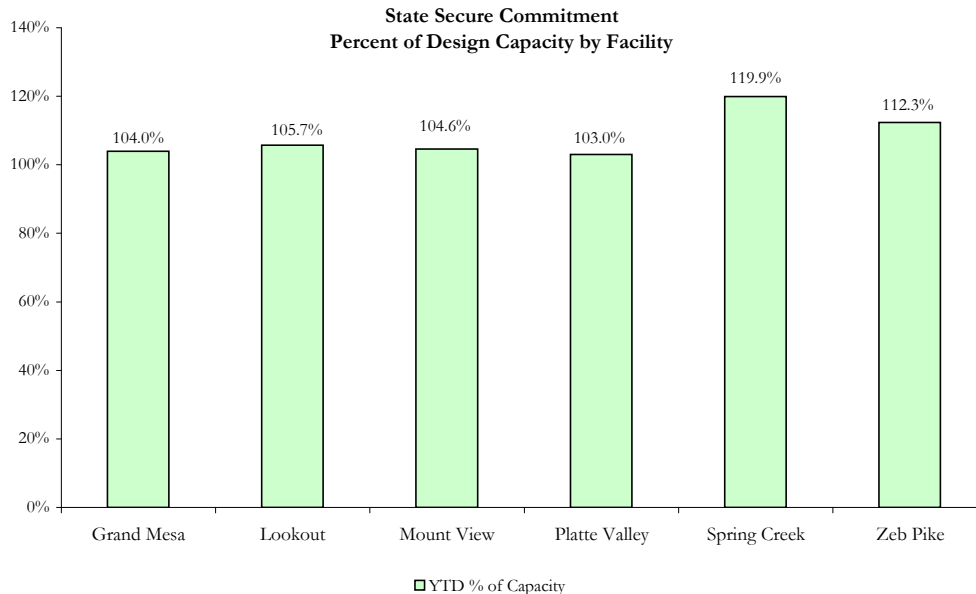
III. Commitment Services

A. State and Contract Secure ADP by Facility

STATE SECURE						
Facility	ADP		Capacity			
	State Secure		Design		Budgeted at 110%	
	March	YTD	Capacity	% of YTD	Capacity	% of YTD
Adams*	0.1	0.2	N/A	-	N/A	-
Gilliam*	0.7	0.5	N/A	-	N/A	-
Grand Mesa	46.2	41.6	40	104.0%	44	94.5%
Lookout	160.5	158.6	150	105.7%	163	97.3%
Marvin Foote	0.2	10.5	N/A	-	N/A	-
Mount View	69.8	72.2	69	104.6%	76	94.9%
Platte Valley	58.7	59.8	58	103.0%	66	90.5%
Pueblo*	0.4	0.2	N/A	-	N/A	-
Sol Vista	0.0	8.6	N/A	-	N/A	-
Spring Creek	50.2	49.2	41	119.9%	45	109.2%
Zeb Pike	40.9	40.4	36	112.3%	40	102.1%
GRAND TOTAL	427.5	441.6	394	112.1%	434	101.8%

*Detention Only facilities with commitment ADP due to detained youth being held prior to commitment

CONTRACT + STAFF SECURE		
Facility/Program	ADP	
	March	YTD
Alternative Homes For Youth - Greeley	13.1	10.5
Betty K. Marler Center	40.0	40.6
Brown Center	0.0	0.1
Childrens Ark	0.0	3.9
Childrens Ark at Pueblo	7.0	2.1
Devereux Cleo Wallace	23.5	25.4
Gateway Residential Program	0.0	1.4
Gateway Residential Program - Grand Junction	0.0	0.7
Hand Up Homes for Youth - West	1.0	1.0
Hilltop (Residential Youth Services)	2.0	3.6
Jefferson Hills	40.9	42.2
Ridge View	218.1	241.0
Robert DeNier	11.1	15.3
Southern Peaks	22.4	21.5
Third Way Center - Lowry	8.6	12.7
Turning Point Center Youth & Family	10.8	4.2
TOTAL	398.2	425.8



March 2012

DYC Population Report

III. Commitment Services Continued

B. Community/Other Residential ADP by Facility

COMMUNITY RESIDENTIAL		
	<i>Monthly</i>	<i>YTD</i>
Ariel Clinical Services	0.0	0.8
Boulder Community Treatment Center	0.0	0.1
Community Corrections and Work Release	1.0	1.0
Dale House Project	12.4	10.8
Denver Area Youth Services (DAYS)	0.0	2.8
Gateway Residential Program - Delta	1.9	0.7
Gateway Residential Program - Grand Junction	4.2	1.3
Griffith Centers (SR)	7.3	6.2
Griffith Centers - Chins Up	0.0	0.3
Job Corps	6.2	4.2
Kids Crossing	0.0	1.1
Kidz Ark Sterling	0.0	0.2
Kidz Ark New Raymer Ranch	0.0	0.1
Lost and Found Inc. Arvada	8.8	8.3
Lost and Found Inc. Independent Living	0.0	0.2
Maple Star	0.0	0.1
Mesa County Community Corrections	1.0	0.6
Mt Evans Qualifying House	12.9	11.7
Reflections For Youth Inc., Grismore	1.0	0.6
Reflections For Youth Inc., Prairie View	1.8	1.4
Savio House	1.0	1.8
Summit Treatment Service, Inc	12.7	11.2
Synergy Administration	9.5	6.7
Third Way Center	4.0	4.6
Third Way Center, Pontiac	5.4	6.5
Third Way Center, York	10.3	8.4
Third Way Center, Lincoln	8.6	8.9
Turning Point Center Youth & Family	0.0	7.9
Turning Point, Mathews St.	7.0	3.4
Whimspire Child Placement	0.0	1.7
Youthtrack, San Luis Valley	1.9	1.3
Youthtrack, Work and Learn	4.9	6.8
<i>Community Subtotal</i>	<i>123.8</i>	<i>121.3</i>

Contract/Staff Secure + Community Total 522.1 547.1

OTHER RESIDENTIAL		
	<i>Monthly</i>	<i>YTD</i>
CMHI-Ft.Logan	0.4	0.1
CMHI-Pueblo	1.0	0.9
Hospital	1.1	0.3
Immigration Detention Facility	1.5	0.6
Job Corps Parole Program (Federally funded)	1.7	4.2
Other Mental Health Facility	0.0	0.5
Residential Drug/Alcohol Program	0.0	0.4
Residential MH Program	2.3	1.7
Residential Work Program	0.0	0.5
Shelter Care (short term)	0.0	0.6
<i>Other Residential Total*</i>	<i>18.8</i>	<i>12.9</i>

RESIDENTIAL TOTAL		
	968.3	1,001.7

*Other Residential Total may not accurately sum due to Trails-related issues

March 2012 DYC Population Report

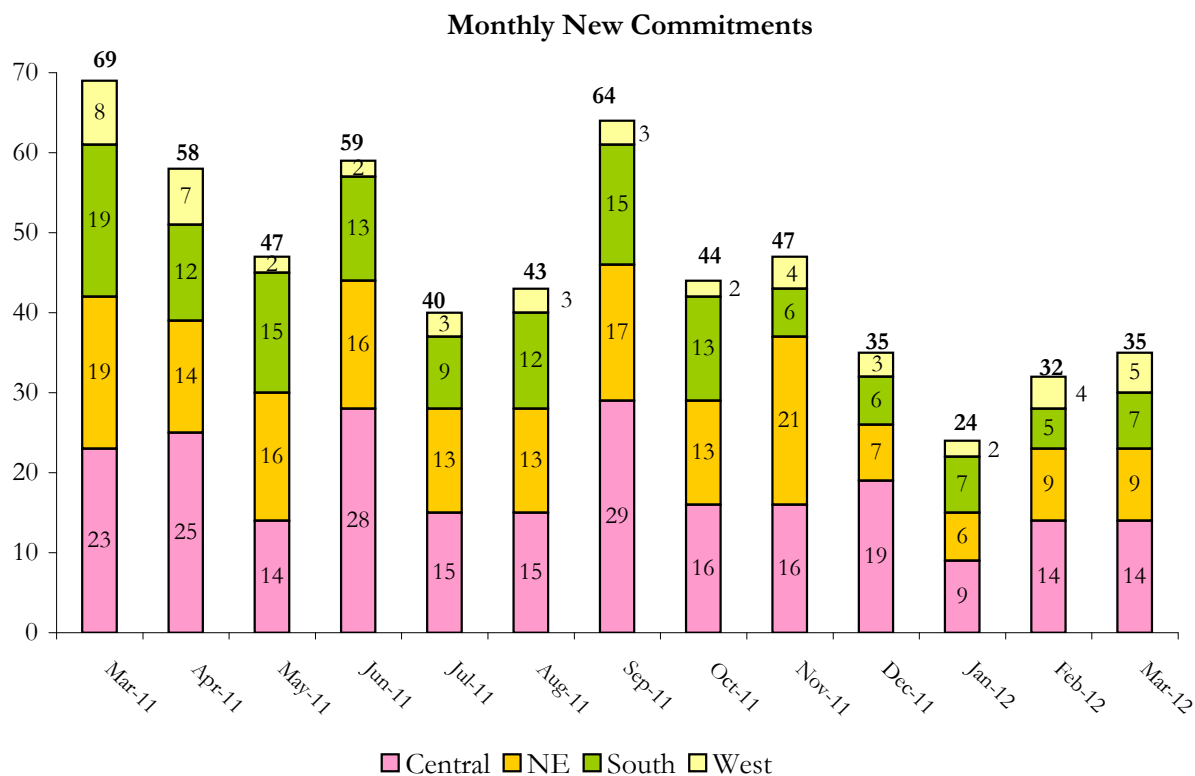
IV. ADP and New Commitments by Region

COMMITMENT ADP

Region	Monthly		YTD
	March 2012	% Change	
Central Region	400.6	-2.3%	418.4
Northeast Region	260.7	-5.3%	271.5
Southern Region	207.7	0.7%	210.3
Western Region	99.4	0.3%	101.4
Commitment ADP Total	968.3	-2.3%	1,001.7

NEW COMMITMENTS

By Region	FY 11-12		FY 10-11		% Change fm last YTD
	March 2012	YTD	March 2012	YTD	
<i>Central Region</i>	14	155	23	186	-16.7%
<i>Northeast Region</i>	9	115	19	129	-10.9%
<i>Southern Region</i>	7	87	19	100	-13.0%
<i>Western Region</i>	5	34	8	60	-43.3%
TOTAL	35	391	69	475	-17.7%



March 2012 DYC Population Report

V. Parole Services

Parole ADP				
Region	March 2012	YTD		% Change fm prev YTD
		FY 11-12	FY 10-11	
Central	155.0	164.3	192.1	-14.4%
Northeast	85.0	99.0	113.3	-12.6%
Southern	56.3	68.4	81.9	-16.5%
Western	28.7	35.5	41.9	-15.3%
Total	325.0	367.2	429.2	-14.4%

By Region	Parole Intakes		Parole Discharges		LOS
	March 2012	YTD	March 2012	YTD	
Central Region	20	197	29	211	6.9
Northeast Region	19	123	16	149	6.1
Southern Region	5	71	11	102	6.9
Western Region	5	43	3	47	6.6
TOTAL	49	434	59	509	6.7

Monthly Parole ADP

