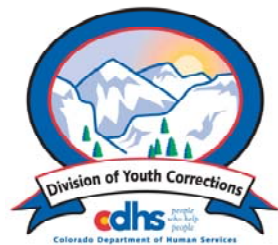


FEBRUARY 2012 MONTHLY POPULATION REPORT FY 2011 - 2012

Prepared by the Division of Youth Corrections Research and Evaluation Unit March 23, 2012



Colorado Department of Human Services
Division of Youth Corrections

Working with Colorado Communities to Achieve Justice

February 2012 DYC Population Report

I.	Summary Population Data	1
II.	Detention ADP by Facility	2
III.	Commitment Services	
	A. State and Contract Secure ADP by Facility	3
	B. Community/Other Residential ADP by Facility	4
IV.	ADP and New Commitments by Region	5
V.	Parole Services	6

February 2012 DYC Population Report

I. Summary Population Data*

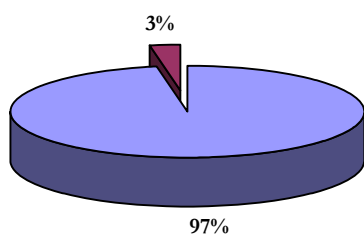
DETAINED YOUTH				
	February 2012		YTD	
	ADP	% change	ADP	LOS
State-Operated	282.7	6.6%	300.9	14.9 days
Contracted Staff Secure	9.3	-6.9%	9.0	15.5 days
Total Detained	292.0	6.1%	309.9	14.9 days

COMMITTED YOUTH				
	February 2012		YTD	
	ADP	% change	ADP	LOS
State Secure	437.1	-5.9%	443.5	8.3 months
Private Secure/Staff Supervised	408.5	-4.7%	429.5	6.9 months
Community Residential	125.9	14.6%	120.1	2.7 mos
Other Residential	19.1	0.7%	12.6	6.4 days
Total Committed Residential	990.7	0.4%	1,005.7	18.1 months
<i>Committed Residential w/o Boulder</i>	<i>983.3</i>	<i>0.4%</i>	<i>1,000.3</i>	<i>-</i>

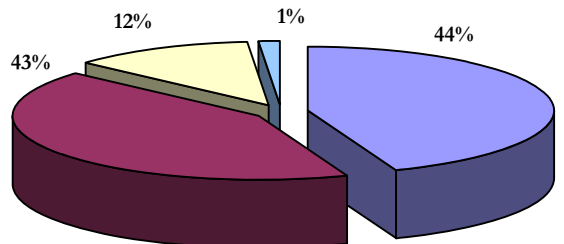
PAROLE YOUTH				
	February 2012		YTD	
	ADP	% change	ADP	LOS
Parole	329.3	-1.5%	373.6	6.7 months

TOTAL STATEWIDE ADP				
	February 2012		YTD	
	ADP	% change	ADP	LOS
DETENTION	292.0	6.1%	309.9	14.9 days
COMMITMENT	990.7	0.4%	1,005.7	18.1 months
PAROLE	329.3	-1.5%	373.6	6.7 months
STATE TOTAL	1,612.0	1.0%	1,689.2	N/A

Detention ADP
Year to Date



Commitment ADP
Year to Date



■ State-Operated ■ Contracted Staff Secure

■ State Secure ■ Private Secure/Staff Supervised
■ Community Residential ■ Other Residential

*Due to rounding, totals shown may not be an exact sum of the subtotals

February 2012 DYC Population Report

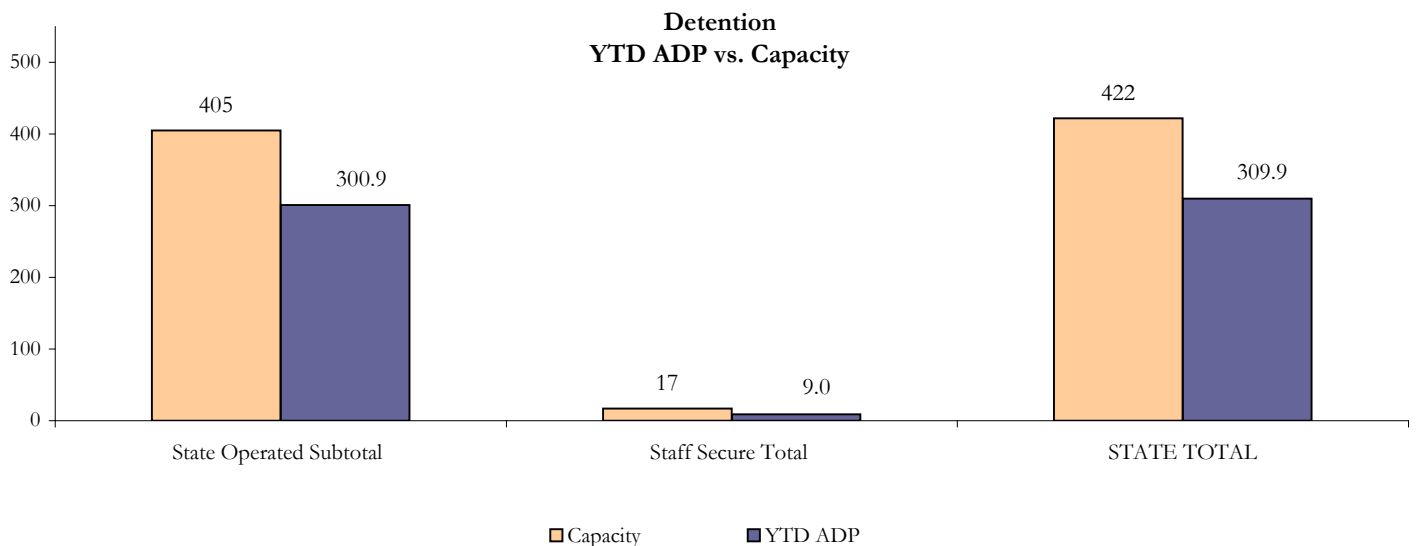
II. Detention ADP by Facility

State Operated Detention							
Facility	Operating Capacity*	Average Daily Population			New Admissions		LOS (days)
		Monthly	YTD	YTD % of Cap	Monthly	YTD	YTD
Adams	25	20.4	18.7	74.9%	45	323	13.9
Gilliam	64	54.1	54.8	85.7%	72	722	18.1
Grand Mesa	29	21.2	20.8	71.6%	40	244	18.7
Marvin Foote	80	45.1	55.3	69.1%	92	808	16.5
Mount View	51	24.3	32.2	63.2%	75	529	15.0
Platte Valley	69	53.9	53.4	77.3%	123	1,035	12.5
Pueblo	26	17.2	19.0	73.2%	55	366	12.4
Spring Creek	61	46.7	46.6	76.5%	95	797	13.9
State Subtotal	405	282.7	300.9	74.3%	597	4,824	14.9

Staff Secure Detention							
Facility	Operating Capacity*	Average Daily Population			New Admissions		LOS (days)
		Monthly	YTD	YTD % of Cap	Monthly	YTD	YTD
Brown Center	3	0.7	0.9	29.0%	1	11	18.9
Robert DeNier	10	4.8	5.2	51.6%	8	78	16.1
Youthtrack San Luis Valley	4	3.8	2.9	73.6%	4	47	13.6
Staff Secure Subtotal	17	9.3	9.0	52.8%	13	136	15.5

STATEWIDE TOTAL							
	Operating Capacity*	Average Daily Population			New Admissions		LOS (days)
		Monthly	YTD	YTD % of Cap	Monthly	YTD	YTD
Total Detention	422	292.0	309.9	73.4%	610	4,960	14.9

*New capacities for FY 2011-12 implemented July 1, 2011



February 2012 DYC Population Report

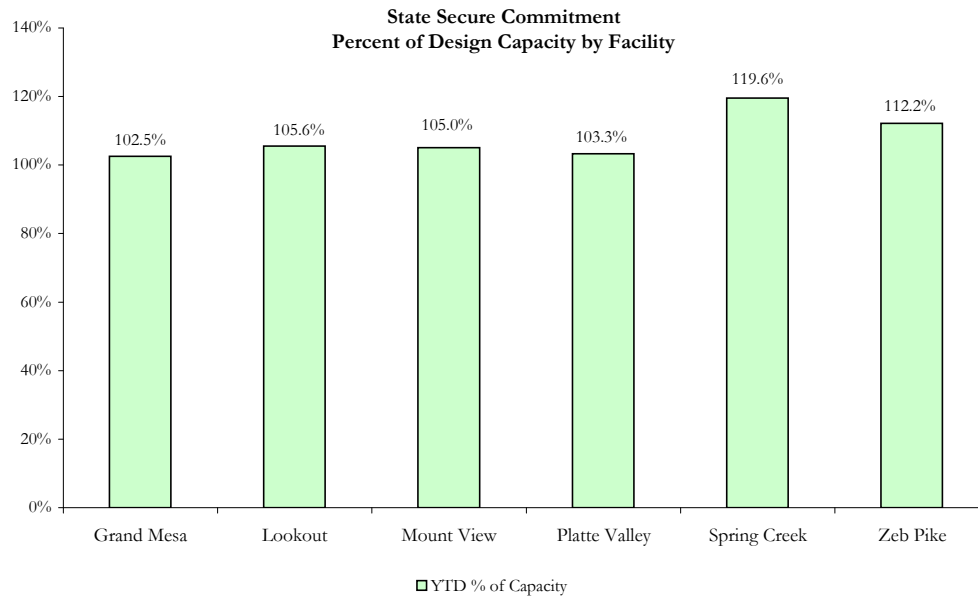
III. Commitment Services

A. State and Contract Secure ADP by Facility

STATE SECURE						
Facility	ADP		Capacity			
	State Secure		Design		Budgeted at 110%	
	February	YTD	Capacity	% of YTD	Capacity	% of YTD
<i>Adams*</i>	0.3	0.3	N/A	-	N/A	-
<i>Gilliam*</i>	0.5	0.5	N/A	-	N/A	-
Grand Mesa	43.6	41.0	40	102.5%	44	93.2%
Lookout	161.7	158.3	150	105.6%	163	97.1%
Marvin Foote	0.3	11.8	N/A	-	N/A	-
Mount View	81.2	72.5	69	105.0%	76	95.4%
Platte Valley	59.2	59.9	58	103.3%	66	90.8%
<i>Pueblo*</i>	0.4	0.1	N/A	-	N/A	-
Sol Vista	0.0	9.7	N/A	-	N/A	-
Spring Creek	48.9	49.0	41	119.6%	45	109.0%
Zeb Pike	41.1	40.4	36	112.2%	40	102.0%
GRAND TOTAL	437.1	443.5	394	112.6%	434	102.2%

**Detention Only facilities with commitment ADP due to detained youth being held prior to commitment*

CONTRACT + STAFF SECURE		
Facility/Program	ADP	
	February	YTD
Alternative Homes For Youth - Greeley	11.0	10.2
Betty K. Marler Center	40.1	40.7
Brown Center	0.0	0.1
Childrens Ark	7.9	5.9
Devereux Cleo Wallace	24.8	25.6
Gateway Residential Program	0.0	1.5
Gateway Residential Program - Grand Junction	0.0	0.7
Hand Up Homes for Youth - West	1.0	1.0
Hilltop (Residential Youth Services)	1.5	3.8
Jefferson Hills	41.3	42.3
Ridge View	222.9	244.1
Robert DeNier	14.1	15.7
Southern Peaks	22.5	21.4
Third Way Center - Lowry	7.5	13.2
Turning Point Center Youth & Family	13.9	3.3
TOTAL	408.5	429.5



February 2012 DYC Population Report

III. Commitment Services Continued B. Community/Other Residential ADP by Facility

COMMUNITY RESIDENTIAL		
	<i>Monthly</i>	<i>YTD</i>
Ariel Clinical Services	0.0	0.8
Boulder Community Treatment Center	0.0	0.1
Community Corrections and Work Release	1.0	1.0
Dale House Project	11.2	10.5
Denver Area Youth Services (DAYS)	0.0	3.0
Gateway Residential Program - Delta	2.0	0.5
Gateway Residential Program - Grand Junction	3.1	0.9
Griffith Centers (SR)	7.2	6.0
Griffith Centers - Chins Up	0.0	0.2
Job Corps	5.9	3.9
Kids Crossing	0.0	0.9
Kidz Ark Sterling	0.0	0.2
Kidz Ark New Raymer Ranch	0.0	0.1
Lost and Found Inc. Arvada	9.5	8.3
Lost and Found Inc. Independent Living	0.0	0.2
Maple Star	0.0	0.1
Mesa County Community Corrections	1.0	0.6
Mt Evans Qualifying House	13.2	11.6
Reflections For Youth Inc., Grismore	1.0	0.6
Reflections For Youth Inc., Prairie View	2.0	1.3
Savio House	1.4	1.9
Summit Treatment Service, Inc	12.2	11.0
Synergy Administration	8.4	6.3
Third Way Center	4.9	4.9
Third Way Center, Pontiac	6.3	6.6
Third Way Center, York	12.0	8.3
Third Way Center, Lincoln	8.5	8.8
Turning Point Center Youth & Family	0.0	8.9
Turning Point, Mathews St.	7.0	3.0
Whimspire Child Placement	0.0	1.6
Youthtrack, San Luis Valley	2.0	1.3
Youthtrack, Work and Learn	6.2	7.1
<i>Community Subtotal</i>	<i>125.9</i>	<i>120.1</i>
<i>Contract/Staff Secure + Community Total</i>	<i>534.4</i>	<i>549.6</i>
OTHER RESIDENTIAL		
	<i>Monthly</i>	<i>YTD</i>
CMHI-Ft.Logan	0.0	0.0
CMHI-Pueblo	1.0	0.8
Hospital	1.7	0.2
Immigration Detention Facility	1.0	0.5
Job Corps Parole Program (Federally funded)	1.9	4.4
Other Mental Health Facility	0.6	0.6
Residential Drug/Alcohol Program	0.0	0.4
Residential MH Program	2.1	1.7
Residential Work Program	0.0	0.5
Shelter Care (short term)	1.1	0.8
<i>Other Residential Total*</i>	<i>19.1</i>	<i>12.6</i>
RESIDENTIAL TOTAL	990.7	1,005.7

*Other Residential Total may not accurately sum due to Trails-related issues

February 2012 DYC Population Report

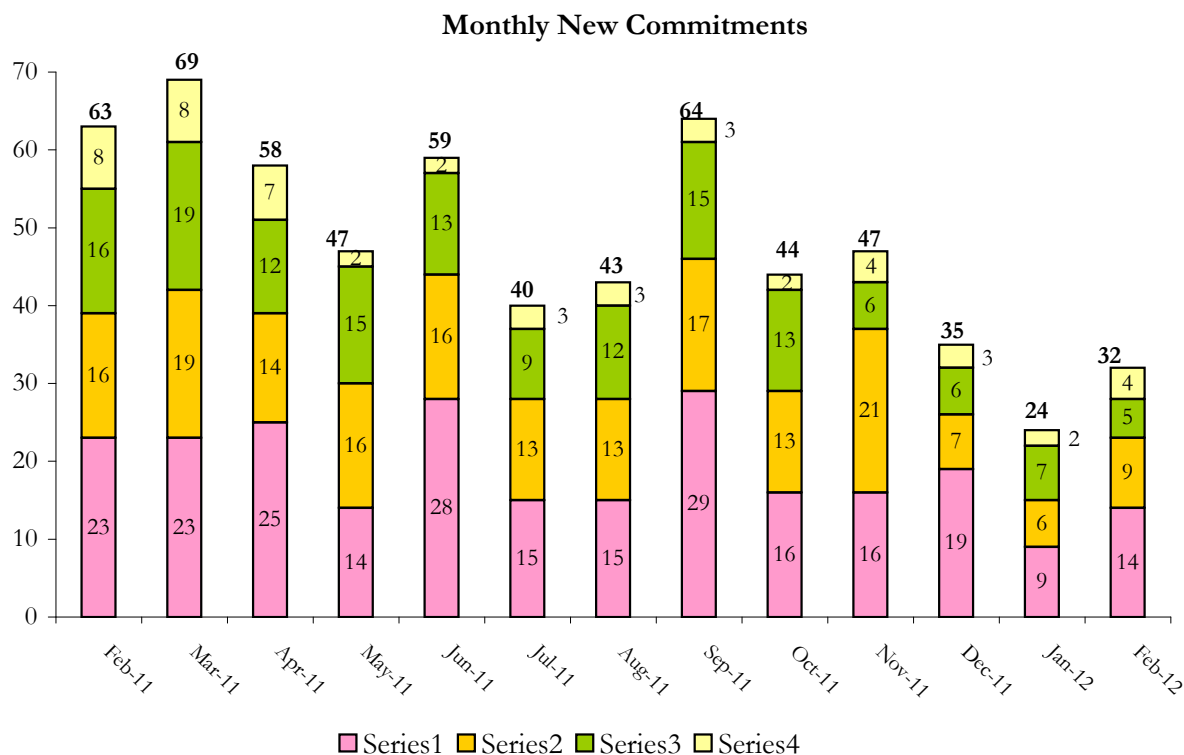
IV. ADP and New Commitments by Region

COMMITMENT ADP

Region	Monthly		YTD
	February	% Change	
Central Region	410.1	-0.2%	420.7
Northeast Region	275.2	-1.0%	273.2
Southern Region	206.2	1.3%	210.8
Western Region	99.2	5.2%	101.0
Commitment ADP Total	990.7	0.4%	1,005.7

NEW COMMITMENTS

By Region	FY 11-12		FY 10-11		% Change fm last YTD
	February	YTD	February	YTD	
<i>Central Region</i>	14	140	23	162	-13.6%
<i>Northeast Region</i>	9	105	16	110	-4.5%
<i>Southern Region</i>	5	80	16	81	-1.2%
<i>Western Region</i>	4	27	8	52	-48.1%
TOTAL	32	352	63	405	-13.1%



February 2012 DYC Population Report

V. Parole Services

Parole ADP				
Region	February	YTD		% Change fm prev YTD
		FY 11-12	FY 10-11	
Central	161.1	166.9	193.8	-13.9%
Northeast	83.8	101.6	114.6	-11.3%
Southern	58.7	69.4	82.5	-15.8%
Western	25.7	35.6	43.1	-17.4%
Total	329.3	373.6	434.0	-13.9%

By Region	Parole Intakes		Parole Discharges		LOS
	February	YTD	February	YTD	
Central Region	22	174	24	182	6.8
Northeast Region	14	105	12	129	6.3
Southern Region	7	64	7	91	7.0
Western Region	4	35	2	43	6.7
TOTAL	47	378	45	445	6.7

Monthly Parole ADP

