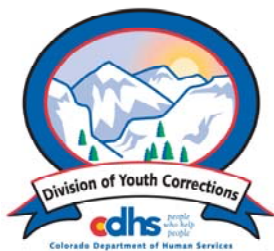


NOVEMBER 2011 MONTHLY POPULATION REPORT FY 2011 - 2012

Prepared by the Division of Youth Corrections Research and Evaluation Unit December 28, 2011



Colorado Department of Human Services
Division of Youth Corrections

Working with Colorado Communities to Achieve Justice

November 2011 DYC Population Report

I.	Summary Population Data	1
II.	Detention ADP by Facility	2
III.	Commitment Services	
	A. State and Contract Secure ADP by Facility	3
	B. Community/Other Residential ADP by Facility	4
IV.	ADP and New Commitments by Region	5
V.	Parole Services	6

November 2011 DYC Population Report

I. Summary Population Data*

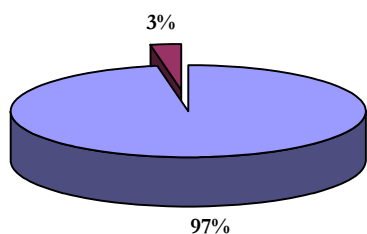
DETAINED YOUTH				
	November 2011		YTD	
	ADP	% change	ADP	LOS
State-Operated	287.6	-10.8%	316.2	15.1 days
Contracted Staff Secure	10.5	7.0%	9.2	16.4 days
Total Detained	298.1	-10.2%	325.4	15.1 days

COMMITTED YOUTH				
	November 2011		YTD	
	ADP	% change	ADP	LOS
State Secure	452.3	-11.3%	447.9	8.6 months
Private Secure/Staff Supervised	427.7	-0.1%	434.0	6.8 months
Community Residential	117.2	12.6%	110.0	2.7 mos
Other Residential	23.2	9.5%	13.7	6.1 days
Total Committed Residential	1,020.4	1.1%	1,005.6	18.3 months
<i>Committed Residential w/o Boulder</i>	<i>1,015.4</i>	<i>1.0%</i>	<i>1,000.9</i>	-

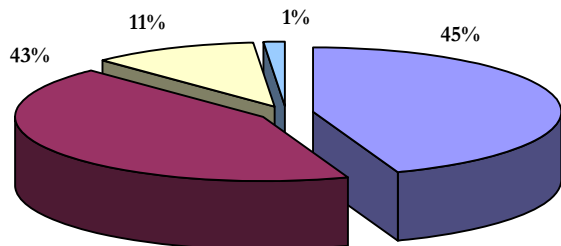
PAROLE YOUTH				
	November 2011		YTD	
	ADP	% change	ADP	LOS
Parole	368.2	-3.3%	385.5	6.9 months

TOTAL STATEWIDE ADP				
	November 2011		YTD	
	ADP	% change	ADP	LOS
DETENTION	298.1	-10.2%	325.4	15.1 days
COMMITMENT	1,020.4	1.1%	1,005.6	18.3 months
PAROLE	368.2	-3.3%	385.5	6.9 months
STATE TOTAL	1,686.7	-2.1%	1,716.4	<i>N/A</i>

Detention ADP
Year to Date



Commitment ADP
Year to Date



■ State-Operated ■ Contracted Staff Secure

■ State Secure ■ Private Secure/Staff Supervised
■ Community Residential ■ Other Residential

*Due to rounding, totals shown may not be an exact sum of the subtotals

November 2011 DYC Population Report

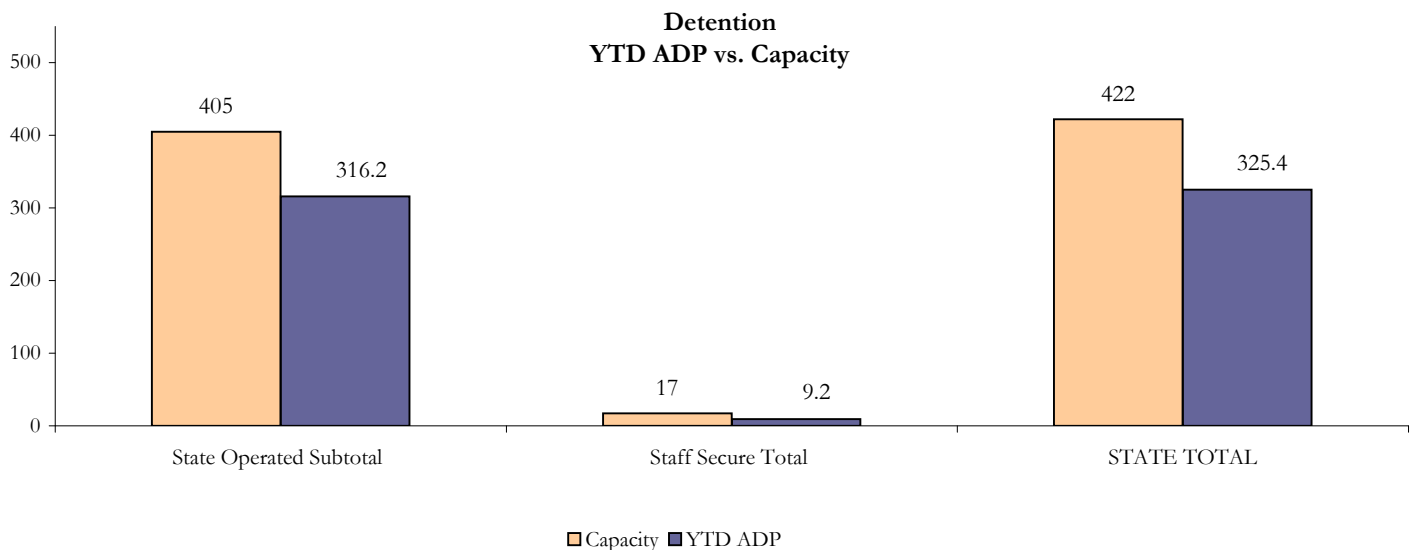
II. Detention ADP by Facility

State Operated Detention							
Facility	Operating Capacity*	Average Daily Population			New Admissions		LOS (days)
		November	YTD	YTD % of Cap	November	YTD	YTD
Adams	25	17.8	18.6	74.4%	40	218	13.2
Gilliam	64	53.1	56.6	88.4%	68	480	17.4
Grand Mesa	29	24.9	19.6	67.7%	40	142	19.3
Marvin Foote	80	55.7	62.1	77.6%	96	554	16.6
Mount View	51	24.9	36.6	71.7%	70	320	16.4
Platte Valley	69	47.5	56.3	81.6%	115	662	12.8
Pueblo	26	17.9	19.7	75.8%	56	229	13.3
Spring Creek	61	45.8	46.8	76.7%	92	496	13.9
State Subtotal	405	287.6	316.2	78.1%	577	3,101	15.1
							16.4

Staff Secure Detention							
Facility	Operating Capacity*	Average Daily Population			New Admissions		LOS (days)
		November	YTD	YTD % of Cap	November	YTD	YTD
Brown Center	3	1.1	0.9	30.9%	1	7	19.2
Robert DeNier	10	5.8	5.2	52.2%	6	50	16.5
Youthtrack San Luis Valley	4	3.6	3.1	76.6%	5	28	15.5
Staff Secure Subtotal	17	10.5	9.2	54.2%	12	85	16.4

STATEWIDE TOTAL							
	Operating Capacity*	Average Daily Population			New Admissions		LOS (days)
		November	YTD	YTD % of Cap	November	YTD	YTD
Total Detention	422	298.1	325.4	77.1%	589	3,186	15.1

*New capacities for FY 2011-12 implemented July 1, 2011



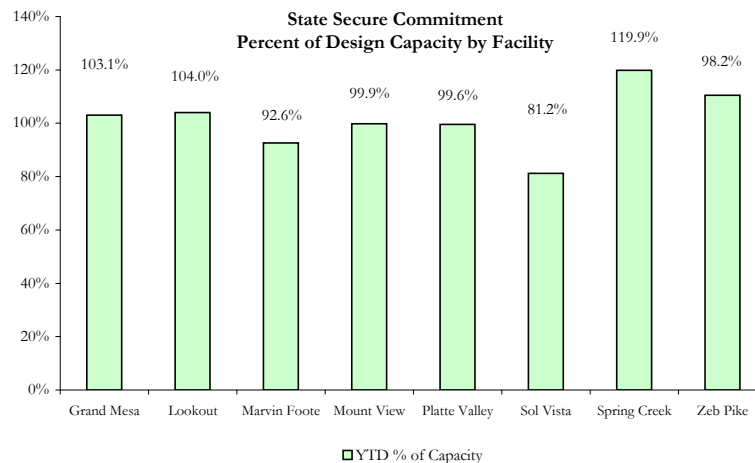
November 2011 DYC Population Report

III. Commitment Services A. State and Contract Secure ADP by Facility

STATE SECURE						
Facility	ADP		Capacity			
	State Secure		Design		Budgeted at 110%	
	2011	YTD	Capacity	% of YTD	Capacity	% of YTD
Adams*	0.6	0.3	N/A	-	N/A	-
Gilliam*	0.3	0.5	N/A	-	N/A	-
Grand Mesa	39.1	41.2	40	103.1%	44	93.7%
Lookout	157.7	158.1	152	104.0%	167	94.6%
Marvin Foote	19.6	18.5	20	92.6%	22	84.2%
Mount View	66.1	65.9	66	99.9%	73	90.8%
Platte Valley	68.9	58.8	59	99.6%	65	90.6%
Pueblo*	0.0	0.1	N/A	-	N/A	-
Sol Vista	2.9	15.4	19	81.2%	19	81.2%
Spring Creek	53.9	49.2	41	119.9%	45	109.0%
Zeb Pike	43.1	39.8	36	110.5%	40	100.4%
GRAND TOTAL	452.3	447.9	433	103.5%	477	94.0%

**Detention Only facilities with commitment ADP due to detained youth being held prior to commitment*

CONTRACT + STAFF SECURE		
Facility/Program	ADP	
	November	YTD
Alternative Homes For Youth - Greeley	12.3	9.1
Betty K. Marler Center	40.0	39.8
Brown Center	0.0	0.1
Childrens Ark	4.3	5.1
Devereux Cleo Wallace	29.8	24.7
Gateway Residential Program	0.0	2.4
Gateway Residential Program - Grand Junction	1.7	0.8
Hand Up Homes for Youth - West	1.0	1.0
Hilltop (Residential Youth Services)	3.3	4.8
Jefferson Hills	42.4	42.4
Ridge View	238.6	251.9
Robert DeNier	16.4	16.7
Southern Peaks	25.1	20.1
Third Way Center - Lowry	12.7	15.1
TOTAL	427.7	434.0



November 2011

DYC Population Report

III. Commitment Services

B. Community/Other Residential ADP by Facility

COMMUNITY RESIDENTIAL		
	Monthly	YTD
Ariel Clinical Services	0.0	0.3
Boulder Community Treatment Center	0.0	0.2
Community Corrections and Work Release	1.9	0.9
Dale House Project	10.1	10.3
Denver Area Youth Services (DAYS)	0.0	3.5
Griffith Centers (SR)	5.6	5.7
Job Corps	5.0	3.4
Kids Crossing	0.0	0.4
Kidz Ark Sterling	0.0	0.4
Kidz Ark New Raymer Ranch	0.0	0.1
Lost and Found Inc. Arvada	8.3	7.8
Maple Star	0.0	0.1
Mesa County Community Corrections	0.0	0.3
Mt Evans Qualifying House	14.7	10.3
Reflections For Youth Inc., Grismore	0.0	0.5
Reflections For Youth Inc., Prairie View	2.0	0.9
Savio House	2.0	1.9
Summit Treatment Service, Inc	10.8	10.3
Synergy Administration	7.5	5.7
Third Way Center	3.2	3.3
Third Way Center, Pontiac	6.7	6.0
Third Way Center, York	8.3	7.3
Third Way Center, Lincoln	9.2	8.4
Turning Point Center Youth & Family	11.8	11.4
Turning Point, Mathews St.	2.6	1.6
Whimspire Child Placement	0.0	0.9
Youthtrack, San Luis Valley	2.0	0.8
Youthtrack, Work and Learn	5.4	7.2
<i>Community Subtotal</i>	<i>117.2</i>	<i>110.0</i>
<i>Contract/Staff Secure + Community Total</i>	<i>544.9</i>	<i>543.9</i>
OTHER RESIDENTIAL		
CMHI-Ft.Logan	0.1	0.1
CMHI-Pueblo	0.8	0.6
Hospital	0.0	0.0
Immigration Detention Facility	0.5	0.2
Job Corps Parole Program (Federally funded)	5.8	5.3
Other Mental Health Facility	0.1	0.5
Residential Drug/Alcohol Program	1.3	0.4
Residential MH Program	2.0	1.5
Residential Work Program	1.0	0.7
Shelter Care (short term)	1.5	0.6
<i>Other Residential Total*</i>	<i>23.2</i>	<i>13.7</i>
RESIDENTIAL TOTAL	1,020.4	1,005.6

*Other Residential Total may not accurately sum due to Trails-related issues

November 2011 DYC Population Report

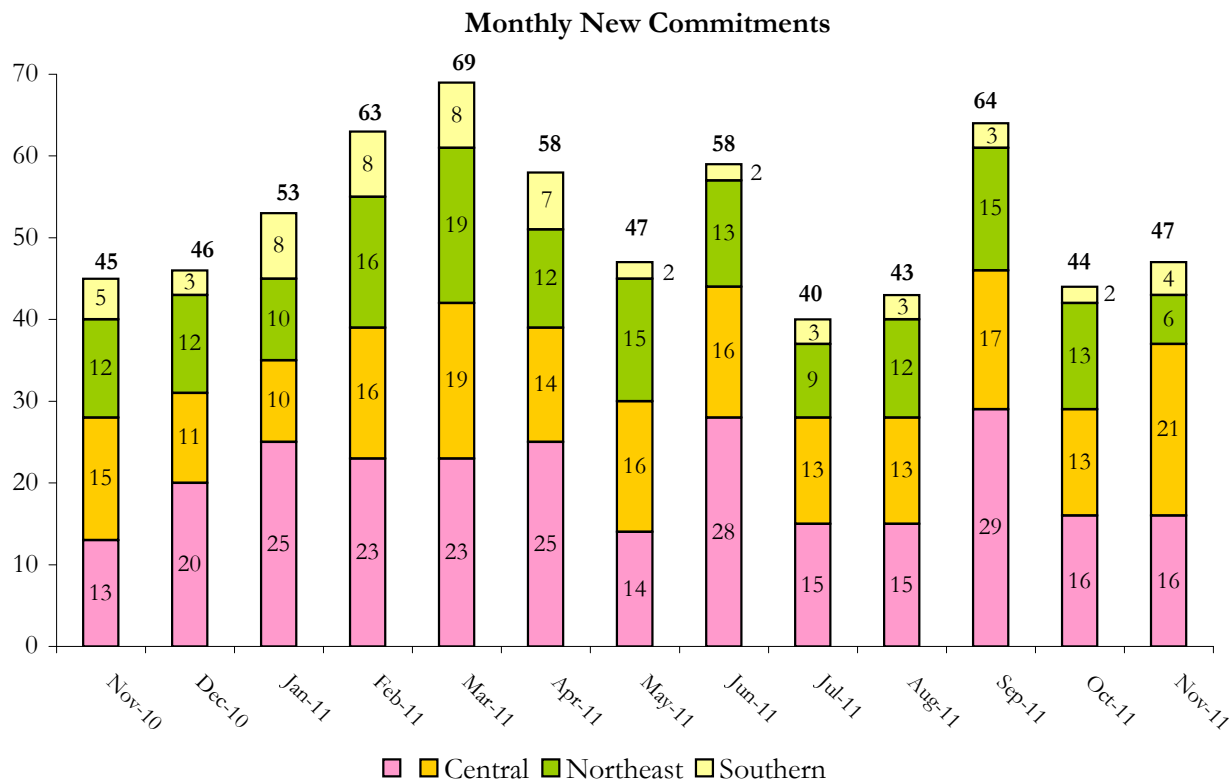
IV. ADP and New Commitments by Region

COMMITMENT ADP

Region	Monthly		YTD
	November	% Change	
Central Region	411.7	-1.1%	423.3
Northeast Region	287.4	7.5%	264.5
Southern Region	220.1	0.5%	212.9
Western Region	101.2	-5.0%	104.8
Commitment ADP Total	1,020.4	1.1%	1,005.6

NEW COMMITMENTS

By Region	FY 11-12		FY 10-11		% Change fm last YTD
	November	YTD	November	YTD	
<i>Central Region</i>	16	92	13	92	0.0%
<i>Northeast Region</i>	21	81	15	72	12.5%
<i>Southern Region</i>	6	61	12	42	45.2%
<i>Western Region</i>	4	17	5	32	-46.9%
TOTAL	47	251	45	238	5.5%



November 2011 DYC Population Report

V. Parole Services

Parole ADP				
Region	November	YTD		% Change fm prev YTD
		FY 11-12	FY 10-11	
Central	169.7	165.0	197.0	-16.3%
Northeast	93.3	106.2	117.2	-9.4%
Southern	67.3	74.5	81.4	-8.5%
Western	37.8	39.8	46.4	-14.3%
Total	368.2	385.5	442.0	-12.8%

By Region	Parole Intakes		Parole Discharges		LOS
	November	YTD	November	YTD	
Central Region	16	118	15	119	6.9
Northeast Region	9	63	12	73	6.4
Southern Region	12	42	10	57	7.5
Western Region	4	25	3	24	6.6
TOTAL	41	248	40	273	6.9

Monthly Parole ADP

