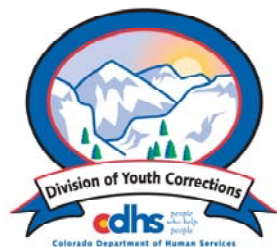


OCTOBER 2011 MONTHLY POPULATION REPORT FY 2011 - 2012

Prepared by the Division of Youth Corrections Research and Evaluation Unit December 5, 2011



Colorado Department of Human Services
Division of Youth Corrections

Working with Colorado Communities to Achieve Justice

October 2011 DYC Population Report

I.	Summary Population Data	1
II.	Detention ADP by Facility	2
III.	Commitment Services	
	A. State and Contract Secure ADP by Facility	3
	B. Community/Other Residential ADP by Facility	4
IV.	ADP and New Commitments by Region	5
V.	Parole Services	6

October 2011 DYC Population Report

I. Summary Population Data*

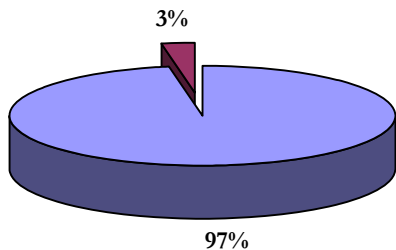
DETAINED YOUTH				
	October 2011		YTD	
	ADP	% change	ADP	LOS
State-Operated	322.2	-0.8%	323.8	15.3 days
Contracted Staff Secure	9.8	35.2%	8.9	15.8 days
Total Detained	332.1	0.0%	332.7	15.3 days

COMMITTED YOUTH				
	October 2011		YTD	
	ADP	% change	ADP	LOS
State Secure	456.0	40.7%	446.7	8.3 months
Private Secure/Staff Supervised	428.4	-2.7%	437.1	6.8 months
Community Residential	104.1	9.1%	106.1	2.6 mos
Other Residential	20.7	17.4%	13.4	7.4 days
Total Committed Residential	1,009.2	1.8%	1,003.3	17.9 months
<i>Committed Residential w/o Boulder</i>	<i>1,005.2</i>	<i>1.9%</i>	<i>998.7</i>	<i>-</i>

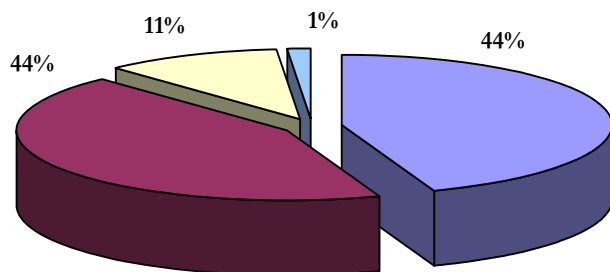
PAROLE YOUTH				
	October 2011		YTD	
	ADP	% change	ADP	LOS
Parole	380.8	-2.9%	388.7	6.9 months

TOTAL STATEWIDE ADP				
	October 2011		YTD	
	ADP	% change	ADP	LOS
DETENTION	332.1	0.0%	332.7	15.3 days
COMMITMENT	1,009.2	1.8%	1,003.3	17.9 months
PAROLE	380.8	-2.9%	388.7	6.9 months
STATE TOTAL	1,722.2	0.3%	1,724.6	<i>N/A</i>

Detention ADP
Year to Date



Commitment ADP
Year to Date



■ State-Operated ■ Contracted Staff Secure ■ State Secure ■ Private Secure/Staff Supervised
■ Community Residential ■ Other Residential

*Due to rounding, totals shown may not be an exact sum of the subtotals

October 2011 DYC Population Report

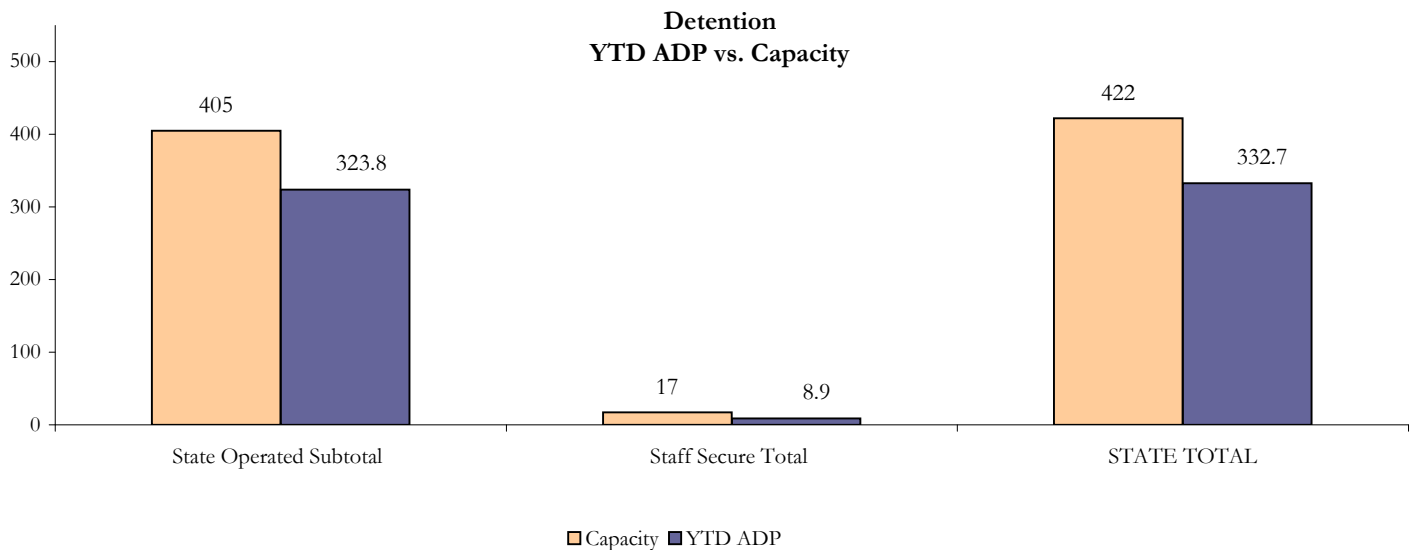
II. Detention ADP by Facility

State Operated Detention							
Facility	Operating Capacity*	Average Daily Population			New Admissions		LOS (days)
		October 2011	YTD	YTD % of Cap	October 2011	YTD	YTD
Adams	25	19.8	18.8	75.2%	48	178	13.4
Gilliam	64	55.1	57.4	89.7%	96	412	16.7
Grand Mesa	29	18.1	18.3	63.2%	24	102	22.4
Marvin Foote	80	67.6	63.6	79.5%	113	458	16.4
Mount View	51	33.1	39.4	77.3%	63	250	17.4
Platte Valley	69	58.5	58.8	85.2%	131	548	12.8
Pueblo	26	21.3	20.1	77.5%	42	173	14.4
Spring Creek	61	48.7	47.3	77.5%	110	404	14.1
State Subtotal	405	322.2	323.8	79.9%	627	2,525	15.3

Staff Secure Detention							
Facility	Operating Capacity*	Average Daily Population			New Admissions		LOS (days)
		October 2011	YTD	YTD % of Cap	October 2011	YTD	YTD
Brown Center	3	0.6	0.9	29.8%	2	6	19.0
Robert DeNier	10	6.0	5.1	50.6%	11	44	16.0
Youthtrack San Luis Valley	4	3.3	2.9	73.1%	9	23	14.5
Staff Secure Subtotal	17	9.8	8.9	52.3%	22	73	15.8

STATEWIDE TOTAL							
	Operating Capacity*	Average Daily Population			New Admissions		LOS (days)
		October 2011	YTD	YTD % of Cap	October 2011	YTD	YTD
Total Detention	422	332.1	332.7	78.8%	649	2,598	15.3

*New capacities for FY 2011-12 implemented July 1, 2011



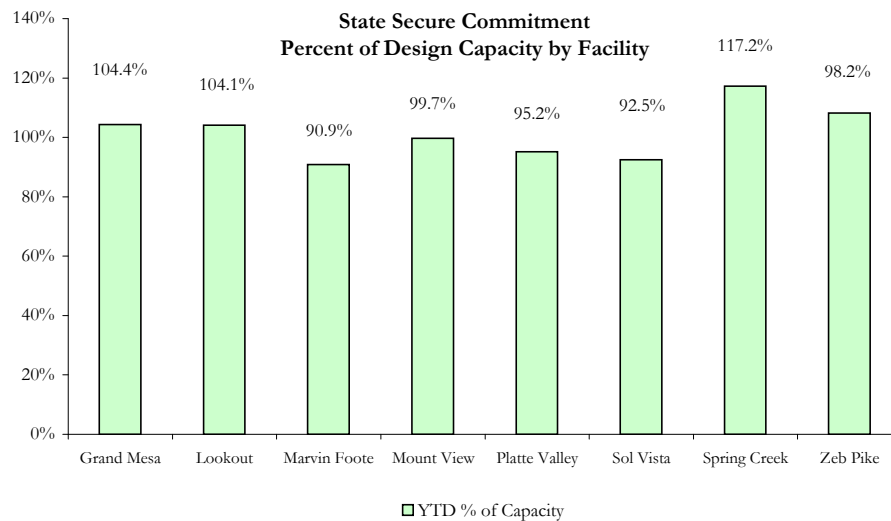
October 2011 DYC Population Report

III. Commitment Services A. State and Contract Secure ADP by Facility

STATE SECURE						
Facility	ADP		Capacity			
	State Secure		Design		Budgeted at 110%	
	2011	YTD	Capacity	% of YTD	Capacity	% of YTD
<i>Adams*</i>	0.2	0.3	N/A	-	N/A	-
<i>Gilliam*</i>	1.0	0.6	N/A	-	N/A	-
Grand Mesa	39.9	41.8	40	104.4%	44	94.9%
Lookout	157.5	158.2	152	104.1%	167	94.6%
Marvin Foote	18.1	18.2	20	90.9%	22	82.6%
Mount View	72.4	65.8	66	99.7%	73	90.7%
Platte Valley	61.2	56.1	59	95.2%	65	86.5%
<i>Pueblo*</i>	0.2	0.2	N/A	-	N/A	-
Sol Vista	14.7	18.5	20	92.5%	22	84.1%
Spring Creek	50.0	48.1	41	117.2%	45	106.6%
Zeb Pike	40.7	39.0	36	108.3%	40	98.4%
GRAND TOTAL	456.0	446.7	434	102.9%	477	93.6%

**Detention Only facilities with commitment ADP due to detained youth being held prior to commitment*

CONTRACT + STAFF SECURE		
Facility/Program	ADP	
	September	YTD
Alternative Homes For Youth - Greeley	10.8	8.3
Betty K. Marler Center	39.9	39.8
Brown Center	0.0	0.1
Childrens Ark	5.2	5.2
Devereux Cleo Wallace	25.3	23.4
Gateway Residential Program	0.7	3.0
Gateway Residential Program - Grand Junction	1.0	0.5
Hand Up Homes for Youth - West	1.0	1.0
Hilltop (Residential Youth Services)	5.6	5.8
Jefferson Hills	42.7	42.4
Ridge View	242.1	255.9
Robert DeNier	16.8	16.7
Southern Peaks	22.4	18.9
Third Way Center - Lowry	14.4	15.6
TOTAL	427.9	436.9



October 2011 DYC Population Report

III. Commitment Services

B. Community/Other Residential ADP by Facility

COMMUNITY RESIDENTIAL		
	Monthly	YTD
Ariel Clinical Services	0.0	0.1
Boulder Community Treatment Center	0.0	0.3
Comcor	0.2	0.0
Community Corrections and Work Release	0.5	0.6
Dale House Project	9.5	10.3
Denver Area Youth Services (DAYS)	0.0	3.6
Griffith Centers for Children, INC	6.6	5.7
Job Corps	3.9	3.0
Kids Crossing	0.0	0.2
Kidz Ark Sterling	0.0	0.5
Kidz Ark New Raymer Ranch	0.0	0.1
Lost and Found Inc. Arvada	7.8	7.7
Maple Star	0.0	0.1
Mesa County Community Corrections	0.0	0.4
Mt Evans Qualifying House	12.8	8.4
Reflections For Youth Inc., Grismore	0.0	0.6
Reflections For Youth Inc., Prairie View	1.1	0.6
Savio House	2.2	1.9
Summit Treatment Service, Inc	8.8	10.2
Synergy Administration	6.6	5.3
Third Way Center	2.4	3.3
Third Way Center, Pontiac	6.1	5.9
Third Way Center, York	8.5	7.1
Third Way Center, Lincoln	7.7	8.2
Turning Point Center Youth & Family	11.3	11.3
Turning Point, Mathews St.	1.3	1.4
Whimspire Child Placement	0.0	1.0
Youthtrack, San Luis Valley	1.9	0.6
Youthtrack, Work and Learn	5.0	7.7
<i>Community Subtotal</i>	<i>104.1</i>	<i>106.1</i>

Contract/Staff Secure + Community Total 532.0 543.0

OTHER RESIDENTIAL		
CMHI-Ft.Logan	0.2	0.1
CMHI-Pueblo	0.7	0.6
Hospital	0.0	0.0
Immigration Detention Facility	0.0	0.1
Job Corps Parole Program (Federally funded)	6.7	5.2
Other Mental Health Facility	0.0	0.6
Residential Drug/Alcohol Program	0.4	0.2
Residential MH Program	1.0	1.2
Residential Work Program	1.0	0.7
Shelter Care (short term)	1.4	0.3
<i>Other Residential Total*</i>	<i>21.2</i>	<i>13.5</i>

RESIDENTIAL TOTAL	1,009.2	1,003.3
--------------------------	----------------	----------------

*Other Residential Total may not accurately sum due to Trails-related issues

October 2011 DYC Population Report

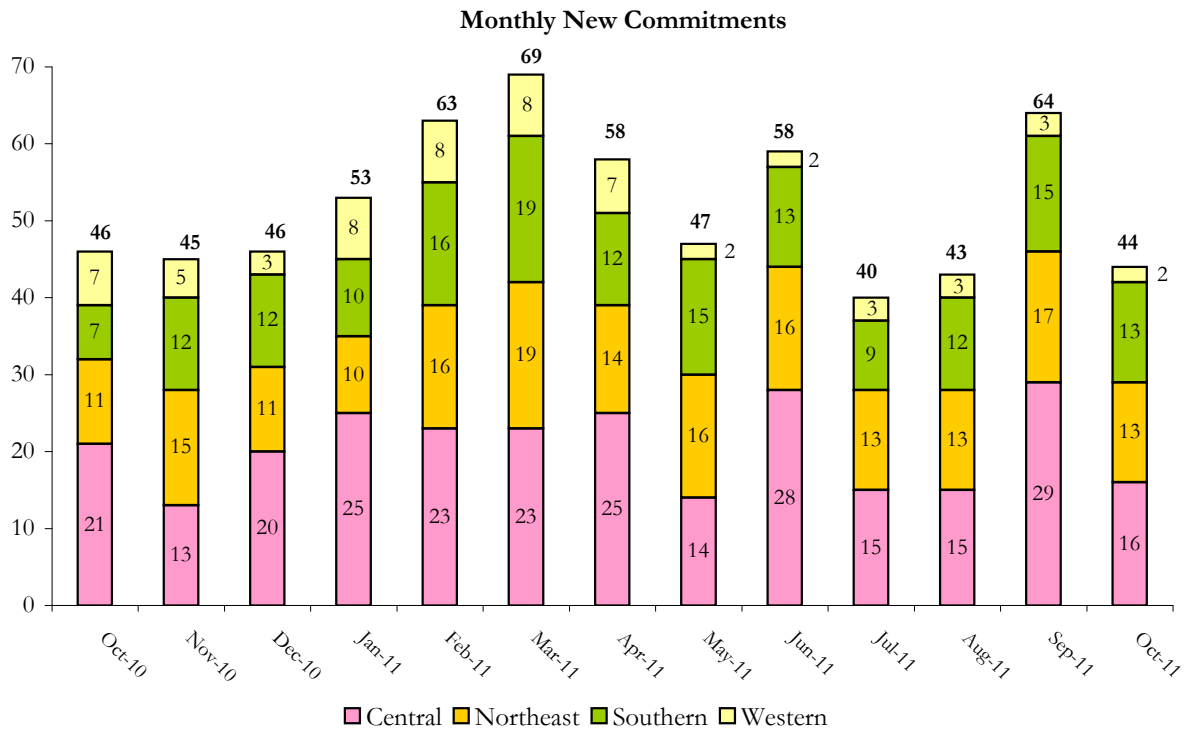
IV. ADP and New Commitments by Region

COMMITMENT ADP

Region	Monthly		YTD
	October	% Change	
Central Region	416.3	0.1%	425.2
Northeast Region	267.3	6.0%	258.5
Southern Region	219.1	2.2%	212.6
Western Region	106.5	-2.5%	107.0
Commitment ADP Total	1,009.2	1.8%	1,003.3

NEW COMMITMENTS

By Region	FY 11-12		FY 10-11		% Change fm last YTD
	October	YTD	October	YTD	
<i>Central Region</i>	16	75	21	80	-6.3%
<i>Northeast Region</i>	13	58	11	56	3.6%
<i>Southern Region</i>	13	50	7	30	66.7%
<i>Western Region</i>	2	13	7	27	-51.9%
TOTAL	44	196	46	193	1.6%



October 2011 DYC Population Report

V. Parole Services

Parole ADP				
Region	October	YTD		% Change fm prev YTD
		FY 11-12	FY 10-11	
Central	165.5	161.2	198.2	-18.7%
Northeast	104.9	109.5	117.0	-6.5%
Southern	72.4	77.8	80.8	-3.7%
Western	38.0	40.2	47.8	-15.8%
Total	380.8	388.7	443.8	-12.4%

By Region	Parole Intakes		Parole Discharges		LOS
	October	YTD	October	YTD	
Central Region	20	100	22	103	7.0
Northeast Region	2	52	13	56	6.4
Southern Region	4	30	7	41	7.3
Western Region	8	21	8	22	6.6
TOTAL	34	203	50	222	6.9

Monthly Parole ADP

