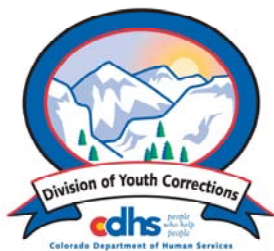


SEPTEMBER 2011 MONTHLY POPULATION REPORT FY 2011 - 2012

Prepared by the Division of Youth Corrections Research and Evaluation Unit November 3, 2011



Colorado Department of Human Services
Division of Youth Corrections

Working with Colorado Communities to Achieve Justice

September 2011 DYC Population Report

I.	Summary Population Data	1
II.	Detention ADP by Facility	2
III.	Commitment Services	
	A. State and Contract Secure ADP by Facility	3
	B. Community/Other Residential ADP by Facility	4
IV.	ADP and New Commitments by Region	5
V.	Parole Services	6

September 2011 DYC Population Report

I. Summary Population Data*

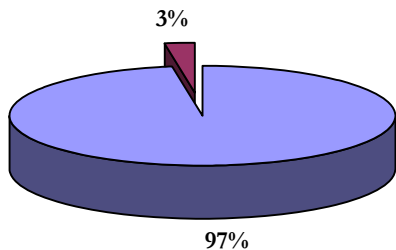
DETAINED YOUTH				
	September 2011		YTD	
	ADP	% change	ADP	LOS
State-Operated	324.9	-1.9%	324.2	15.3 days
Contracted Staff Secure	7.3	-19.6%	8.6	15.6 days
Total Detained	332.2	-2.4%	332.7	15.3 days

COMMITTED YOUTH				
	September 2011		YTD	
	ADP	% change	ADP	LOS
State Secure	438.4	4.0%	443.6	8.8 months
Private Secure/Staff Supervised	440.3	0.2%	440.4	6.5 months
Community Residential	95.4	-6.1%	104.7	2.7 mos
Other Residential	17.6	4.4%	12.6	8.3 days
Total Committed Residential	991.7	-0.2%	1,001.3	18.2 months
<i>Committed Residential w/o Boulder</i>	<i>986.8</i>	<i>-0.2%</i>	<i>996.5</i>	<i>-</i>

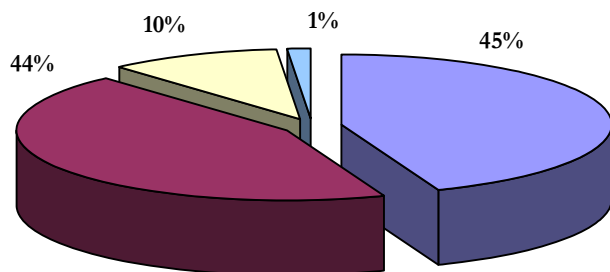
PAROLE YOUTH				
	September 2011		YTD	
	ADP	% change	ADP	LOS
Parole	392.4	2.7%	388.4	6.9 months

TOTAL STATEWIDE ADP				
	September 2011		YTD	
	ADP	% change	ADP	LOS
DETENTION	332.2	-2.4%	332.7	15.3 days
COMMITMENT	991.7	-0.2%	1,001.3	18.2 months
PAROLE	392.4	2.7%	388.4	6.9 months
STATE TOTAL	1,716.3	0.0%	1,722.5	N/A

Detention ADP
Year to Date



Commitment ADP
Year to Date



■ State-Operated ■ Contracted Staff Secure

■ State Secure ■ Private Secure/Staff Supervised
□ Community Residential □ Other Residential

*Due to rounding, totals shown may not be an exact sum of the subtotals

September 2011 DYC Population Report

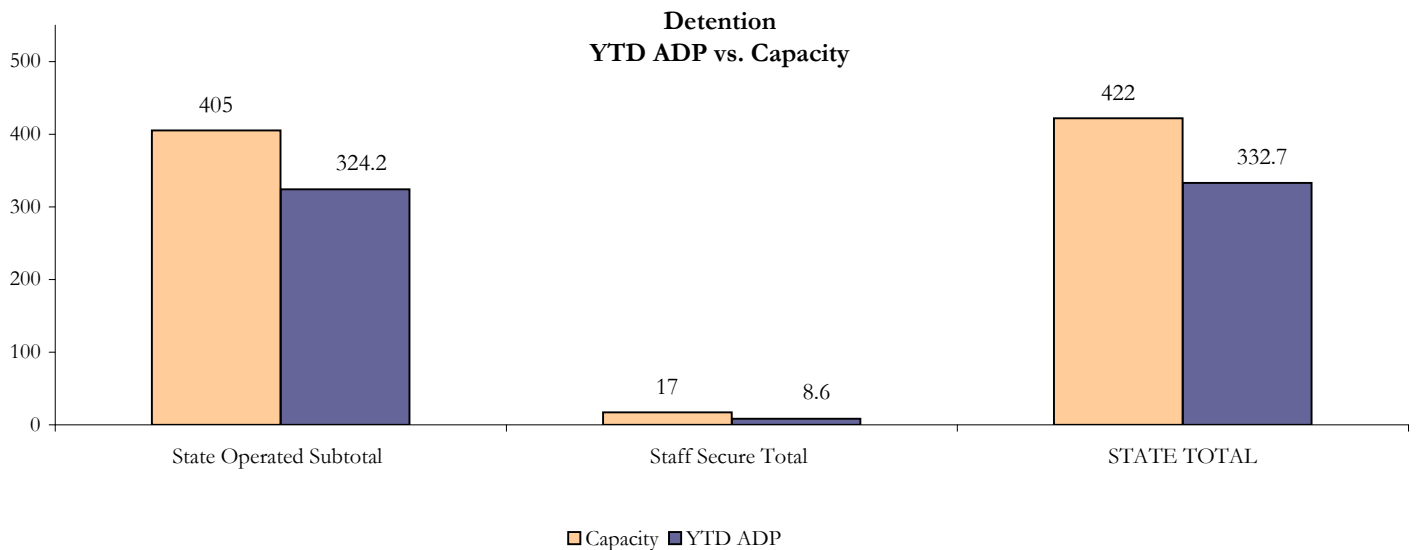
II. Detention Program Services Continued

State Operated Detention							
Facility	Operating Capacity*	Average Daily Population			New Admissions		LOS (days)
		September	YTD	YTD % of Cap	September	YTD	YTD
Adams	25	18.4	18.4	73.8%	40	130	12.7
Gilliam	64	59.9	58.1	90.7%	95	316	16.0
Grand Mesa	29	13.6	18.4	63.4%	19	78	22.1
Marvin Foote	80	68.6	62.3	77.9%	120	345	15.6
Mount View	51	41.6	41.5	81.4%	66	187	18.0
Platte Valley	69	59.2	58.9	85.3%	172	417	13.6
Pueblo	26	18.6	19.8	76.0%	37	131	12.5
Spring Creek	61	45.2	46.8	76.8%	100	294	14.9
State Subtotal	405	324.9	324.2	80.0%	649	1,898	15.3

Staff Secure Detention							
Facility	Operating Capacity*	Average Daily Population			New Admissions		LOS (days)
		September	YTD	YTD % of Cap	September	YTD	YTD
Brown Center	3	1.0	1.0	33.6%	2	4	21.4
Robert DeNier	10	4.7	4.7	47.5%	11	33	15.0
Youthtrack San Luis Valley	4	1.7	2.8	70.2%	4	14	15.0
Staff Secure Subtotal	17	7.3	8.6	50.4%	17	51	15.6

STATEWIDE TOTAL							
	Operating Capacity*	Average Daily Population			New Admissions		LOS (days)
		September	YTD	YTD % of Cap	September	YTD	YTD
Total Detention	422	332.2	332.7	78.8%	666	1,949	15.3

*New capacities for FY 2011-12 implemented July 1, 2011



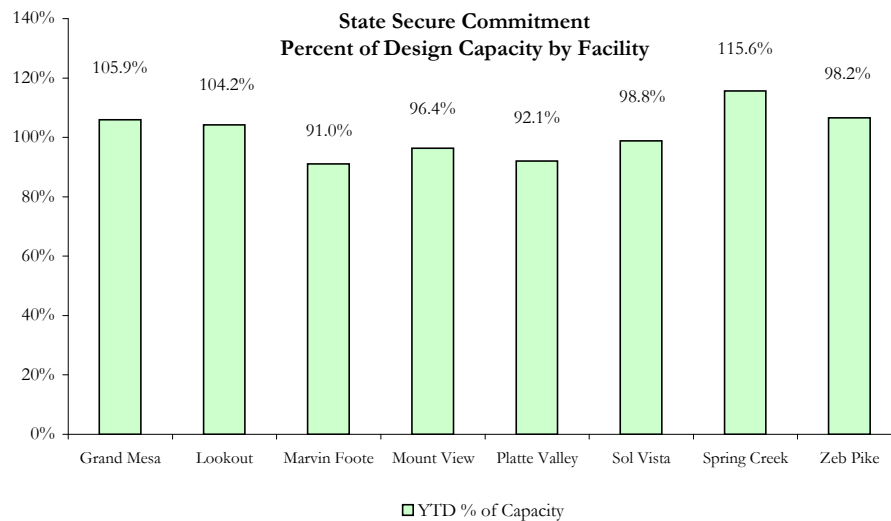
September 2011 DYC Population Report

III. Commitment Services A. State and Contract Secure ADP by Facility

STATE SECURE						
Facility	ADP		Capacity			
	State Secure		Design		Budgeted at 110%	
	2011	YTD	Capacity	% of YTD	Capacity	% of YTD
<i>Adams*</i>	0.1	0.3	N/A	-	N/A	-
<i>Gilliam*</i>	0.3	0.6	N/A	-	N/A	-
Grand Mesa	45.3	42.4	40	105.9%	44	96.3%
Lookout	155.7	158.4	152	104.2%	167	94.8%
Marvin Foote	18.7	18.2	20	91.0%	22	82.8%
Mount View	60.0	63.6	66	96.4%	73	87.6%
Platte Valley	53.0	54.3	59	92.1%	65	83.7%
<i>Pueblo*</i>	0.4	0.1	N/A	-	N/A	-
Sol Vista	19.7	19.8	20	98.8%	22	89.8%
Spring Creek	47.6	47.4	41	115.6%	45	105.1%
Zeb Pike	37.5	38.4	36	106.6%	40	96.9%
GRAND TOTAL	438.4	443.6	434	102.2%	477	92.9%

**Detention Only facilities with commitment ADP due to detained youth being held prior to commitment*

CONTRACT + STAFF SECURE		
Facility/Program	ADP	
	September	YTD
Alternative Homes For Youth - Greeley	9.8	7.5
Betty K. Marler Center	40.0	39.7
Brown Center	0.0	0.2
Childrens Ark	5.0	5.2
Devereux Cleo Wallace	24.1	22.8
Gateway Residential Program	4.8	4.9
Hand Up Homes for Youth - West	1.0	1.0
Hilltop (Residential Youth Services)	6.0	5.9
Jefferson Hills	42.0	42.4
The Oaks	0.5	0.2
Ridge View	255.2	260.0
Robert DeNier	15.9	16.7
Southern Peaks	20.0	17.8
Third Way Center - Lowry	15.9	16.1
TOTAL	440.3	440.4



September 2011

DYC Population Report

III. Commitment Services Continued

B. Community/Other Residential ADP by Facility

COMMUNITY RESIDENTIAL		
	Monthly	YTD
Boulder Community Treatment Center	0.0	0.4
Community Corrections and Work Release	0.3	0.6
Dale House Project	10.5	10.6
Denver Area Youth Services (DAYS)	0.0	3.7
Griffith Centers (SR)	6.3	5.4
Job Corps	3.2	2.7
Kidz Ark Sterling	0.0	0.6
Kidz Ark New Raymer Ranch	0.0	0.1
Lost and Found Inc. Arvada	6.1	7.6
Maple Star	0.0	0.2
Mesa County Community Corrections	0.0	0.5
Mt Evans Qualifying House	8.1	6.8
Reflections For Youth Inc., Grismore	0.0	0.8
Reflections For Youth Inc., Prairie View	1.0	0.5
Savio House	2.1	1.8
Summit Treatment Service, Inc	10.2	10.7
Synergy Administration	5.2	4.8
Third Way Center	2.8	3.6
Third Way Center, Pontiac	6.6	5.8
Third Way Center, York	7.0	6.6
Third Way Center, Lincoln	6.8	8.4
Turning Point Center Youth & Family	11.5	11.3
Turning Point, Mathews St.	0.9	1.4
Whimspire Child Placement	0.0	1.0
Youthtrack, San Luis Valley	0.3	0.1
Youthtrack, Work and Learn	6.4	8.6
<i>Community Subtotal</i>	<i>95.4</i>	<i>104.7</i>

Contract/Staff Secure + Community Total 535.6 545.1

OTHER RESIDENTIAL		
CMHI-Ft.Logan	0.6	0.3
Immigration Detention Facility	0.0	0.2
Job Corps Parole Program (Federally funded)	5.3	4.6
Other Mental Health Facility	0.0	0.8
Residential Drug/Alcohol Program	0.0	0.1
Residential MH Program	2.0	2.2
Residential Work Program	1.0	0.6
<i>Other Residential Total*</i>	<i>17.6</i>	<i>12.6</i>
RESIDENTIAL TOTAL	991.7	1,001.3

*Other Residential Total may not accurately sum due to Trails-related issues

September 2011 DYC Population Report

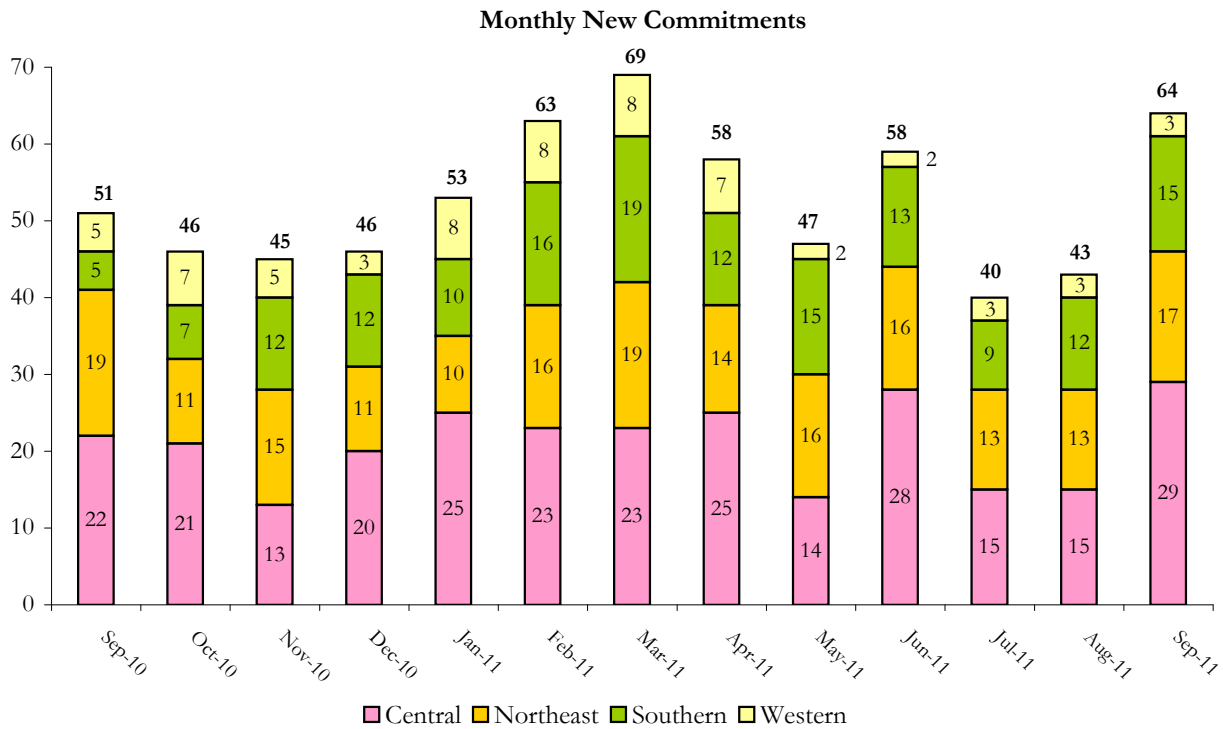
IV. ADP and New Commitments by Region

COMMITMENT ADP

Region	Monthly		YTD
	September	% Change	
Central Region	415.7	-2.8%	427.9
Northeast Region	252.2	-0.3%	255.4
Southern Region	214.4	3.6%	210.6
Western Region	109.3	3.7%	107.4
Commitment ADP Total	991.7	-0.2%	1,001.3

NEW COMMITMENTS

By Region	FY 11-12		FY 10-11		% Change fm last YTD
	September	YTD	September	YTD	
<i>Central Region</i>	29	59	22	57	3.5%
<i>Northeast Region</i>	17	43	19	44	-2.3%
<i>Southern Region</i>	15	37	5	21	76.2%
<i>Western Region</i>	3	11	5	18	-38.9%
TOTAL	64	150	51	140	7.1%



September 2011 DYC Population Report

V. Parole Services

Parole ADP				
Region	September	YTD		% Change fm prev YTD
		FY 11-12	FY 10-11	
Central	167.2	159.8	201.6	-20.7%
Northeast	111.1	109.4	117.2	-6.7%
Southern	75.0	79.1	75.9	4.2%
Western	39.1	40.0	50.6	-20.9%
Total	392.4	388.4	445.3	-12.8%

By Region	Parole Intakes		Parole Discharges		LOS
	September	YTD	September	YTD	
Central Region	23	79	22	78	7.0
Northeast Region	12	50	15	42	6.4
Southern Region	8	24	11	32	7.5
Western Region	2	13	6	14	7.1
TOTAL	45	166	54	166	6.9

Monthly Parole ADP

