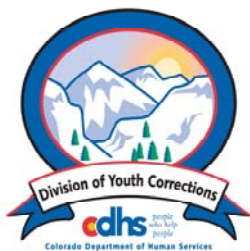


# AUGUST 2011 MONTHLY POPULATION REPORT FY 2011 - 2012

---

Prepared by the Division of Youth Corrections Research and Evaluation Unit October 3, 2011



Colorado Department of Human Services  
Division of Youth Corrections

---

Working with Colorado Communities to Achieve Justice

# August 2011 DYC Population Report

<b>I.</b>	<b>Summary Population Data</b>	<b>1</b>
<b>II.</b>	<b>Detention ADP by Facility</b>	<b>2</b>
<b>III.</b>	<b>Commitment Services</b>	
	A. State and Contract Secure ADP by Facility	<b>3</b>
	B. Community/Other Residential ADP by Facility	<b>4</b>
<b>IV.</b>	<b>ADP and New Commitments by Region</b>	<b>5</b>
<b>V.</b>	<b>Parole Services</b>	<b>6</b>

# August 2011 DYC Population Report

## I. Summary Population Data\*

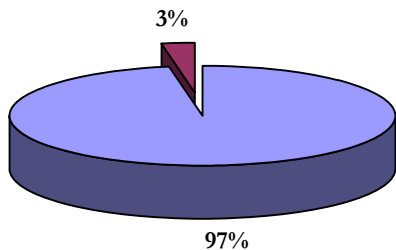
DETAINED YOUTH				
	August 2011		YTD	
	ADP	% change	ADP	LOS
State-Operated	331.3	4.0%	324.5	15.5 days
Contracted Staff Secure	9.1	-12.2%	9.2	15.5 days
<b>Total Detained</b>	<b>340.3</b>	<b>3.5%</b>	<b>333.7</b>	<b>15.5 days</b>

COMMITTED YOUTH				
	August 2011		YTD	
	ADP	% change	ADP	LOS
State Secure	435.6	-4.4%	446.1	8.8 months
Private Secure/Staff Supervised	439.2	-0.9%	440.5	7.1 months
Community Residential	101.6	-4.4%	106.4	2.7 mos
Other Residential	16.9	87.9%	12.4	9.8 days
<b>Total Committed Residential</b>	<b>993.3</b>	<b>-2.1%</b>	<b>1,005.5</b>	<b>19.0 months</b>
<i>Committed Residential w/o Boulder</i>	<i>988.4</i>	<i>-2.1%</i>	<i>1,000.7</i>	<i>-</i>

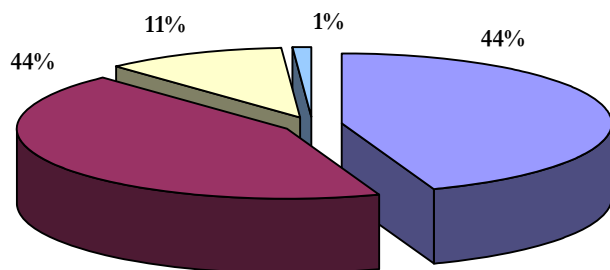
PAROLE YOUTH				
	August 2011		YTD	
	ADP	% change	ADP	LOS
Parole	382.2	1.7%	380.8	7.0 months

TOTAL STATEWIDE ADP				
	August 2011		YTD	
	ADP	% change	ADP	LOS
DETENTION	340.3	3.5%	333.7	15.5 days
COMMITMENT	993.3	-2.1%	1,005.5	19.0 months
PAROLE	382.2	1.7%	380.8	7.0 months
<b>STATE TOTAL</b>	<b>1,715.8</b>	<b>-0.2%</b>	<b>1,720.0</b>	<i>N/A</i>

Detention ADP  
Year to Date



Commitment ADP  
Year to Date



■ State-Operated ■ Contracted Staff Secure

■ State Secure ■ Private Secure/Staff Supervised  
□ Community Residential □ Other Residential

\*Due to rounding, totals shown may not be an exact sum of the subtotals

# August 2011 DYC Population Report

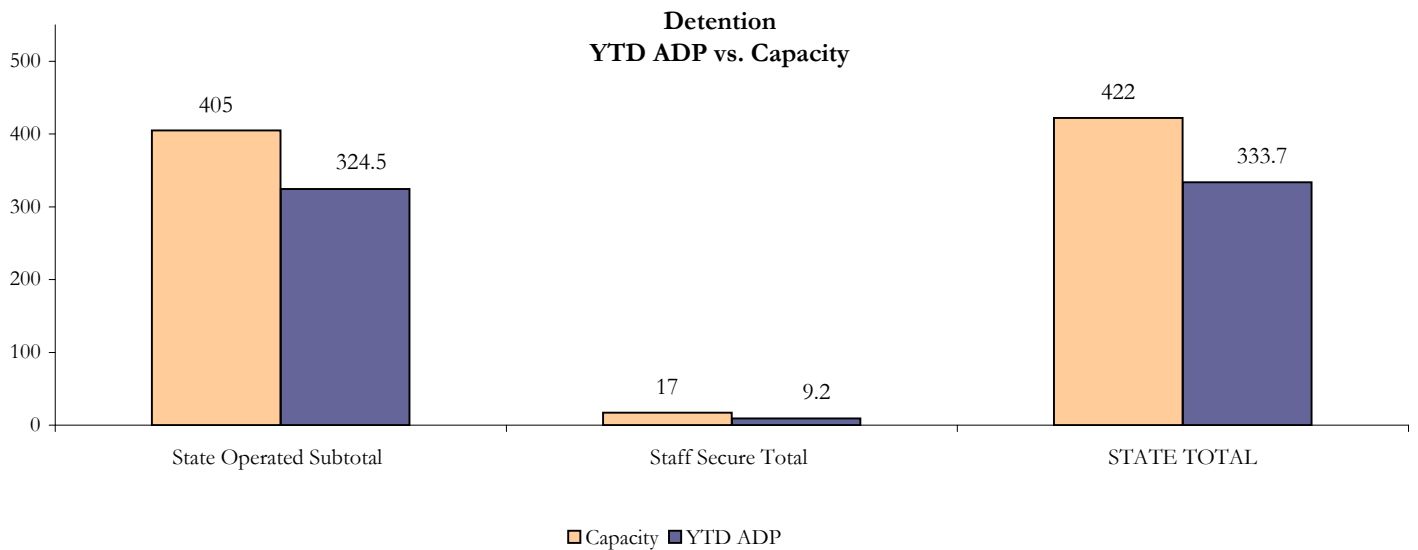
## II. Detention Program Services Continued

State Operated Detention							
Facility	Operating Capacity*	Average Daily Population			New Admissions		LOS (days)
		August 2011	YTD	YTD % of Cap	August 2011	YTD	YTD
Adams	25	19.7	18.5	73.9%	45	90	12.3
Gilliam	64	60.1	57.2	89.4%	118	221	16.8
Grand Mesa	29	21.3	20.7	71.5%	31	59	25.6
Marvin Foote	80	63.2	59.2	74.0%	130	225	16.7
Mount View	51	42.1	41.5	81.4%	66	121	15.7
Platte Valley	69	57.2	59.4	86.1%	125	246	14.5
Pueblo	26	19.7	20.3	78.2%	50	94	12.9
Spring Creek	61	48.1	47.6	78.1%	95	194	13.5
<b>State Subtotal</b>	<b>405</b>	<b>331.3</b>	<b>324.5</b>	<b>80.1%</b>	<b>660</b>	<b>1,250</b>	<b>15.5</b>

Staff Secure Detention							
Facility	Operating Capacity*	Average Daily Population			New Admissions		LOS (days)
		August 2011	YTD	YTD % of Cap	August 2011	YTD	YTD
Brown Center	3	1.1	1.0	34.5%	2	2	25.1
Robert DeNier	10	4.3	4.8	47.8%	9	22	16.1
Youthtrack San Luis Valley	4	3.7	3.4	84.1%	6	10	12.5
<b>Staff Secure Subtotal</b>	<b>17</b>	<b>9.1</b>	<b>9.2</b>	<b>54.0%</b>	<b>17</b>	<b>34</b>	<b>15.5</b>

STATEWIDE TOTAL							
	Operating Capacity*	Average Daily Population			New Admissions		LOS (days)
		August 2011	YTD	YTD % of Cap	August 2011	YTD	YTD
<b>Total Detention</b>	<b>422</b>	<b>340.3</b>	<b>333.7</b>	<b>79.1%</b>	<b>677</b>	<b>1,284</b>	<b>15.5</b>

\*New capacities for FY 2011-12 implemented July 1, 2011



# August 2011 DYC Population Report

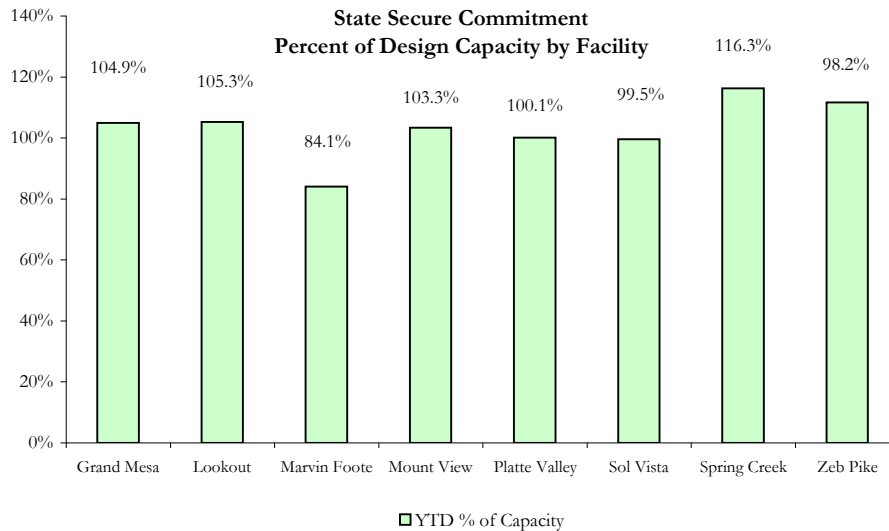
## III. Commitment Services

### A. State and Contract Secure ADP by Facility

STATE SECURE						
Facility	ADP		Capacity			
	State Secure		Design		Budgeted at 110%	
	August 2011	YTD	Capacity	% of YTD	Capacity	% of YTD
<i>Adams*</i>	0.0	0.7	N/A	-	N/A	-
<i>Gilliam*</i>	0.6	1.1	N/A	-	N/A	-
Grand Mesa	39.9	42.0	40	104.9%	44	95.4%
Lookout	159.3	160.1	152	105.3%	167	95.7%
Marvin Foote	19.1	16.8	20	84.1%	22	76.5%
Mount View	62.4	68.2	66	103.3%	73	93.9%
Platte Valley	50.2	59.1	59	100.1%	65	91.0%
<i>Pueblo*</i>	0.0	0.1	N/A	-	N/A	-
Sol Vista	19.7	19.9	20	99.5%	22	90.5%
Spring Creek	46.9	47.7	41	116.3%	45	105.7%
Zeb Pike	37.5	40.2	36	111.7%	40	101.6%
<b>GRAND TOTAL</b>	<b>435.6</b>	<b>446.1</b>	<b>434</b>	<b>102.8%</b>	<b>477</b>	<b>93.5%</b>

*\*Detention Only facilities with commitment ADP due to detained youth being held prior to commitment*

CONTRACT + STAFF SECURE		
Facility/Program	ADP	
	August	YTD
Alternative Homes For Youth - Greeley	7.4	6.4
Betty K. Marler Center	39.6	39.6
Brown Center	0.0	0.3
Childrens Ark	5.0	5.4
Devereux Cleo Wallace	22.7	22.2
Gateway Residential Program	5.0	4.9
Hand Up Homes for Youth - West	1.0	1.0
Hilltop (Residential Youth Services)	5.9	5.9
Jefferson Hills	43.8	42.6
Ridge View	257.4	262.4
Robert DeNier	17.2	17.1
Southern Peaks	17.5	16.7
Third Way Center - Lowry	16.7	16.1
<b>TOTAL</b>	<b>439.2</b>	<b>440.5</b>



# August 2011

## DYC Population Report

### III. Commitment Services Continued

#### B. Community/Other Residential ADP by Facility

<b>COMMUNITY RESIDENTIAL</b>		
	August 2011	YTD
Boulder Community Treatment Center	0.1	0.5
Community Corrections and Work Release	1.0	0.8
Dale House Project	11.0	10.6
Denver Area Youth Services (DAYS)	0.0	3.2
Griffith Centers (SR)	5.3	5.1
Job Corps	2.9	2.4
Kidz Ark Sterling	0.0	0.9
Kidz Ark New Raymer Ranch	0.0	0.2
Lost and Found Inc. Arvada	8.8	8.3
Maple Star	0.0	0.2
Mesa County Community Corrections	0.9	0.8
Mt Evans Qualifying House	5.9	6.2
Reflections For Youth Inc., Grismore	0.5	1.2
Reflections For Youth Inc., Prairie View	0.5	0.2
Savio House	2.0	1.7
Summit Treatment Service, Inc	11.8	11.0
Synergy Administration	4.4	4.7
Third Way Center	4.0	4.0
Third Way Center, Pontiac	5.9	5.4
Third Way Center, York	5.9	6.4
Third Way Center, Lincoln	8.9	9.1
Turning Point Center Youth & Family	11.8	11.2
Turning Point, Mathews St.	1.1	1.6
Whimspire Child Placement	0.0	1.0
Youthtrack, Work and Learn	8.8	9.6
<i>Community Subtotal</i>	<i>101.6</i>	<i>106.4</i>
<b><i>Contract/Staff Secure + Community Total</i></b>	<b><i>540.8</i></b>	<b><i>546.9</i></b>
<b>OTHER RESIDENTIAL</b>		
	August 2011	YTD
CMHI-Pueblo	0.4	0.2
Hospital	0.0	0.0
Immigration Detention Facility	0.0	0.2
Job Corps Parole Program (Federally funded)	4.8	4.3
Other Mental Health Facility	0.8	1.1
Residential Drug/Alcohol Program	0.0	0.2
Residential MH Program	2.0	2.3
Residential Work Program	0.7	0.4
Shelter Care (short term)	0.0	0.0
<i>Other Residential Total*</i>	<i>16.9</i>	<i>12.4</i>
<b>RESIDENTIAL TOTAL</b>	<b>993.3</b>	<b>1,005.5</b>

\*Other Residential Total may not accurately sum due to Trails-related issues

# August 2011 DYC Population Report

## IV. ADP and New Commitments by Region

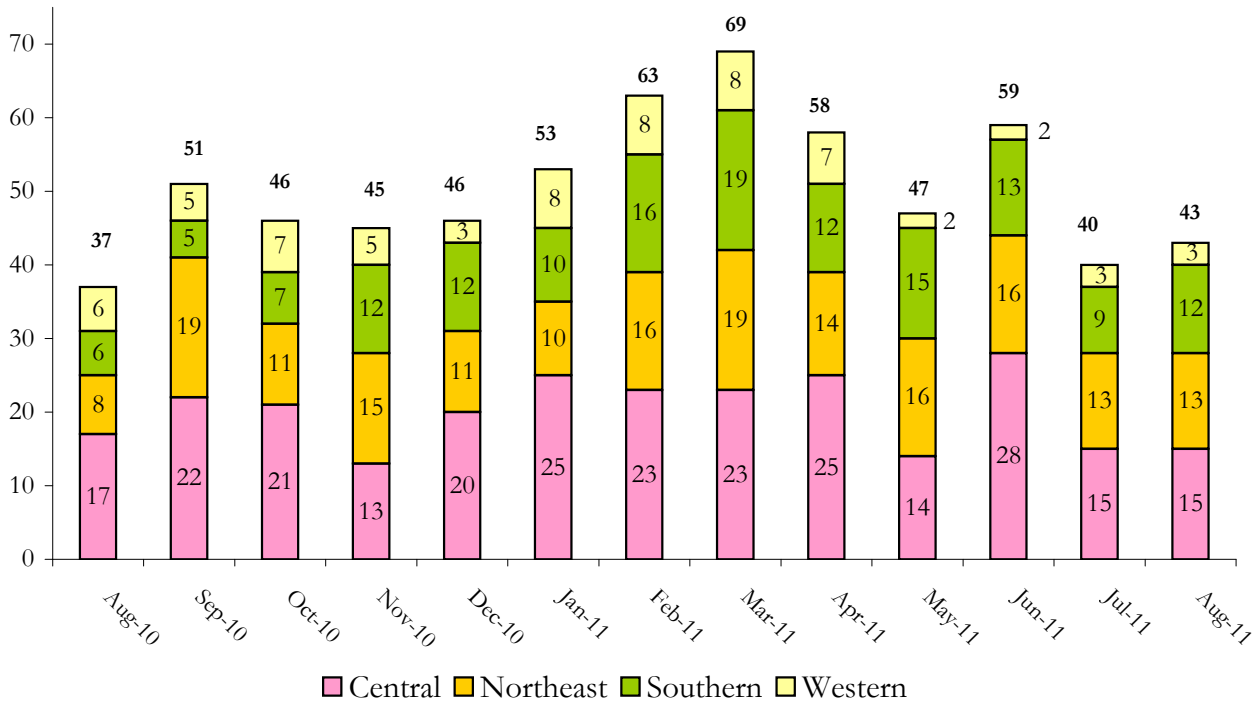
### COMMITMENT ADP

Region	Monthly		YTD
	August 2011	% Change	
Central Region	427.8	-2.5%	434.0
Northeast Region	253.0	-3.0%	256.7
Southern Region	207.0	-0.7%	208.5
Western Region	105.4	-1.0%	106.4
<b>Commitment ADP Total</b>	<b>993.3</b>	<b>-2.1%</b>	<b>1,005.5</b>

### NEW COMMITMENTS

By Region	FY 11-12		FY 10-11		% Change fm last YTD
	August	YTD	August	YTD	
<i>Central Region</i>	15	30	17	34	-11.8%
<i>Northeast Region</i>	13	26	8	25	4.0%
<i>Southern Region</i>	12	22	6	16	37.5%
<i>Western Region</i>	3	6	6	13	-53.8%
<b>TOTAL</b>	<b>43</b>	<b>84</b>	<b>37</b>	<b>88</b>	<b>-4.5%</b>

Monthly New Commitments



# August 2011 DYC Population Report

## V. Parole Services

Parole ADP				
Region	August 2011	YTD		% Change fm prev YTD
		FY 11-12	FY 10-11	
Central	156.1	154.2	200.3	-23.0%
Northeast	105.5	105.9	117.4	-9.8%
Southern	78.9	79.6	73.3	8.6%
Western	41.8	41.2	48.4	-14.9%
<b>Total</b>	<b>382.2</b>	<b>380.8</b>	<b>439.3</b>	<b>-13.3%</b>

By Region	Parole Intakes		Parole Discharges		LOS
	August 2011	YTD	August 2011	YTD	
Central Region	29	55	18	56	7.2
Northeast Region	16	33	14	25	6.5
Southern Region	5	16	10	20	6.4
Western Region	3	11	2	8	8.8
<b>TOTAL</b>	<b>53</b>	<b>115</b>	<b>44</b>	<b>109</b>	<b>7.0</b>

### Monthly Parole ADP

