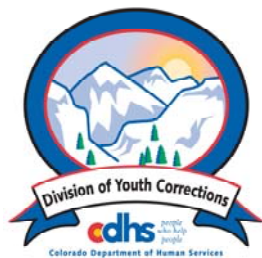


JUNE 2011

MONTHLY POPULATION REPORT

FY 2010 - 2011

Prepared by the Division of Youth Corrections Research and Evaluation Unit July 29, 2011



Colorado Department of Human Services
Division of Youth Corrections

Working with Colorado Communities to Achieve Justice

June 2011

DYC Population Report

I.	Summary Population Data	1
II.	Detention ADP by Facility	2
III.	Commitment Services	
	A. State and Contract Secure ADP by Facility	3
	B. Community/Other Residential ADP by Facility	4
IV.	ADP and New Commitments by Region	5
V.	Parole Services	6

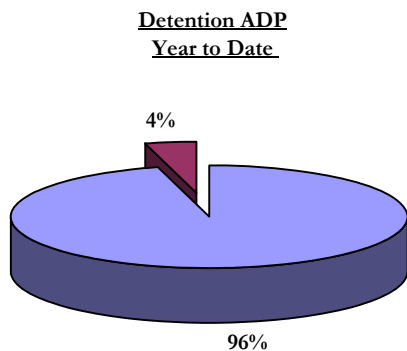
June 2011 DYC Population Report

I. Summary Population Data*

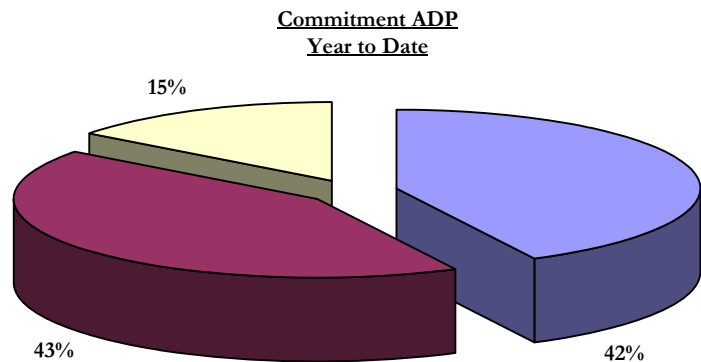
DETAINED YOUTH	Average Daily Population (ADP)			Length of Service (LOS)
	June 2011	% Change from	YTD	YTD
		prev. mo.		
State-Operated	339.1	-5.6%	337.4	15.3 days
Contracted Staff Secure	15.4	-11.7%	15.1	15.6 days
Total Detained	354.5	-5.9%	352.4	15.3 days

COMMITTED YOUTH	Average Daily Population (ADP)			Length of Service (LOS)
	June 2011	% Change from	YTD	YTD
		prev. mo.		
State Secure	451.0	-3.1%	436.9	
Private Secure/Staff Supervised	444.1	2.4%	437.5	
Community Residential	125.3	-3.0%	150.7	
Other Residential	10.0	-13.2%	13.0	
Total Committed Residential	1,030.5	-0.9%	1,038.1	18.2 months
<i>Committed Residential w/o Boulder</i>	<i>1,024.2</i>	<i>-0.9%</i>	<i>1,031.1</i>	

PAROLED YOUTH	Average Daily Population (ADP)			Length of Service (LOS)
	June 2011	% Change from	YTD	YTD
		prev. mo.		
Total Paroled	387.9	-2.4%	418.4	6.7 months
TOTAL STATEWIDE ADP	1,772.8	-2.3%	1,808.9	



■ State-Operated ■ Contracted Staff Secure



■ State Secure ■ Private Secure/Staff Supervised ■ Community Residential

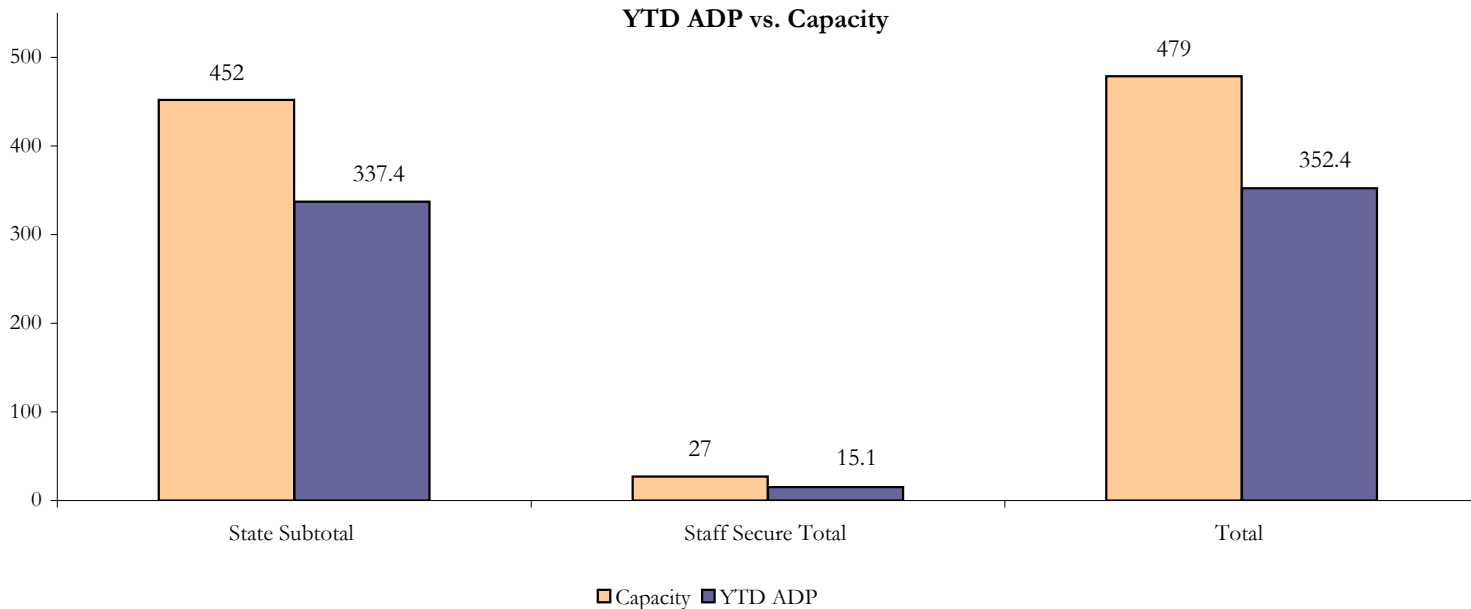
*Due to rounding, totals shown may not be an exact sum of the subtotals

June 2011 DYC Population Report

II. Detention Data by Facility

Facility	Operating Capacity	Average Daily Population			New Admissions		LOS (days)
		June 2011	YTD	YTD % of Cap	June 2011	YTD	YTD
<i>State Operated Detention</i>							
Adams	29	21.1	20.9	72.2%	57	552	13.7
Gilliam	73	63.5	63.7	87.2%	101	1,215	19.0
Grand Mesa	33	20.0	20.2	61.1%	37	402	16.0
Marvin Foote	89	68.3	67.4	75.7%	114	1,411	18.3
Mount View	60	39.2	38.8	64.6%	80	1,010	14.8
Platte Valley	68	55.5	55.2	81.1%	122	1,585	12.5
Pueblo	41	25.5	25.5	62.2%	68	783	11.9
Spring Creek	59	46.0	45.8	77.6%	97	1,121	14.8
<i>State Subtotal</i>	<i>452</i>	<i>339.1</i>	<i>337.4</i>	<i>74.6%</i>	<i>676</i>	<i>8,079</i>	<i>15.3</i>
<i>Staff Secure Detention</i>							
Brown Center	3	1.4	1.4	47.8%	2	26	19.4
Midway (Remington)	8	4.8	4.6	57.6%	2	106	15.7
Robert DeNier	11	6.0	5.9	53.3%	6	148	14.4
Youthtrack San Luis Valley	5	3.2	3.2	63.0%	7	74	16.7
<i>Staff Secure Subtotal</i>	<i>27</i>	<i>15.4</i>	<i>15.1</i>	<i>55.8%</i>	<i>17</i>	<i>354</i>	<i>15.6</i>
TOTAL	479	354.5	352.4	73.6%	693	8,433	15.3

**Detention
YTD ADP vs. Capacity**



June 2011 DYC Population Report

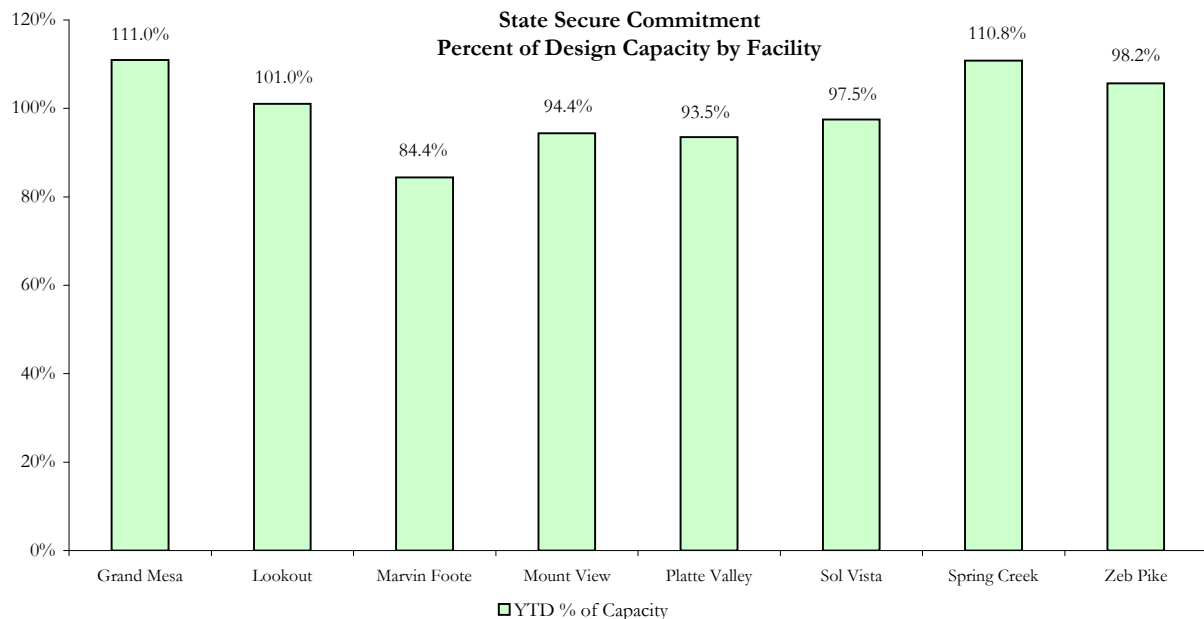
III. Commitment Services

A. State and Contract Secure ADP by Facility

Secure	Secure ADP		Secure Capacity		% of YTD Capacity	
	June 2011	YTD	Design	Budgeted at 110%	Design	Budgeted at 110%
Adams*	0.5	0.4	N/A	N/A	N/A	N/A
Gilliam*	0.7	0.7	N/A	N/A	N/A	N/A
Grand Mesa	41.3	44.4	40	44	111.0%	100.9%
Lookout	159.3	153.5	152	161	101.0%	95.4%
Marvin Foote	16.4	16.9	20	24	84.4%	70.3%
Mount View	65.22	62.3	66	76	94.4%	81.9%
Platte Valley	58.8	55.2	59	65	93.5%	84.9%
Pueblo*	0.6	0.6	N/A	N/A	N/A	N/A
Sol Vista	19.9	19.5	20	20	97.5%	97.5%
Spring Creek	47.7	45.4	41	48	110.8%	94.6%
Zeb Pike	40.6	38.0	36	40	105.7%	95.1%
Secure Subtotal	451.0	436.9	434	478	100.7%	91.4%

*Detention Only facilities with commitment ADP due to detained youth being held prior to commitment

Contract Secure/Staff Supervised	ADP	
	June 2011	YTD
Alternative Homes For Youth - Greeley	4.9	5.8
Betty K. Marler Center	40.9	40.1
Brown Center	0.2	2.1
Childrens Ark	4.7	5.6
Devereux Cleo Wallace	22.2	19.1
Gateway Residential Program	2.5	3.2
Hand Up Homes for Youth - West	1.0	0.1
Hilltop (Residential Youth Services)	3.5	4.7
Jefferson Hills Aurora	42.5	41.9
Mountain Star Center	0.0	2.3
Ridge View	278.1	280.8
Robert DeNier	16.4	15.8
Southern Peaks	14.6	8.2
Third Way Center - Lowry	12.5	7.6
Contract Subtotal	444.1	437.5



June 2011

DYC Population Report

III. Commitment Services Continued

B. Community/Other Residential ADP by Facility

<u>Community Residential</u>	<u>June 2011</u>	<u>YTD</u>
Ariel Clinical Services	0.8	2.6
Boulder Community Treatment Center	1.0	0.1
Community Corrections and Work Release	0.5	0.0
Crisis Connection Program	0.0	0.2
Dale House Project	10.2	11.5
Daybreak Princeton Girls Home	0.0	4.5
Denver Area Youth Services (DAYS)	1.3	0.8
Gateway Youth and Family Services	0.0	0.6
Griffith Centers (SR)	4.5	5.5
Griffith Centers for Children, INC - CHINS UP	0.0	1.1
Job Corps	5.7	5.8
Kids Crossing	0.0	1.3
Kidz Ark Sterling	5.8	5.4
Kidz Ark New Raymer Ranch	1.0	1.1
Larimer Community Corrections	0.0	0.4
Longmont Community Treatment Center	0.0	0.1
Lost and Found Inc. Arvada	8.2	9.8
Maple Star	0.8	1.1
Mesa County Community Corrections	2.0	1.0
Mt Evans Qualifying House	8.2	10.2
Reflections For Youth Inc., Grismore	2.0	2.3
Reflections For Youth Inc., Prairie View	0.0	0.7
ROP-Canyon State Academy	0.9	1.0
Savio House	2.9	1.6
Southwest Colorado Community Corrections	0.0	0.2
Summit Treatment Service, Inc	10.0	14.4
Synergy Administration	5.2	7.6
Third Way Center	4.7	4.1
Third Way Center, Pontiac	5.9	6.2
Third Way Center, York	7.7	8.7
Third Way Center, Lincoln	7.3	7.0
Turning Point Center Youth & Family	12.7	15.5
Turning Point, Mathews St.	2.7	5.9
Whimspire Child Placement	1.0	1.2
Youthtrack, San Luis Valley	1.0	1.9
Youthtrack, Work and Learn	11.5	9.2
<i>Community Subtotal</i>	<i>125.3</i>	<i>150.7</i>
<i>Private Contract Subtotal</i>	<i>569.4</i>	<i>588.2</i>
<u>Other Residential</u>		
CMHI-Ft.Logan	0.0	0.2
CMHI-Pueblo	0.0	0.3
Hospital	0.0	0.0
Immigration Detention Facility	1.8	1.9
Job Corps Parole Program (Federally funded)	1.8	2.1
Other Mental Health Facility	1.0	1.2
Residential Drug/Alcohol Program	0.0	0.6
Residential MH Program	2.0	4.4
Residential Work Program	0.0	0.1
Shelter Care (short term)	0.3	1.0
<i>Other Residential Subtotal*</i>	<i>10.0</i>	<i>13.0</i>
RESIDENTIAL TOTAL	1,030.5	1,038.1

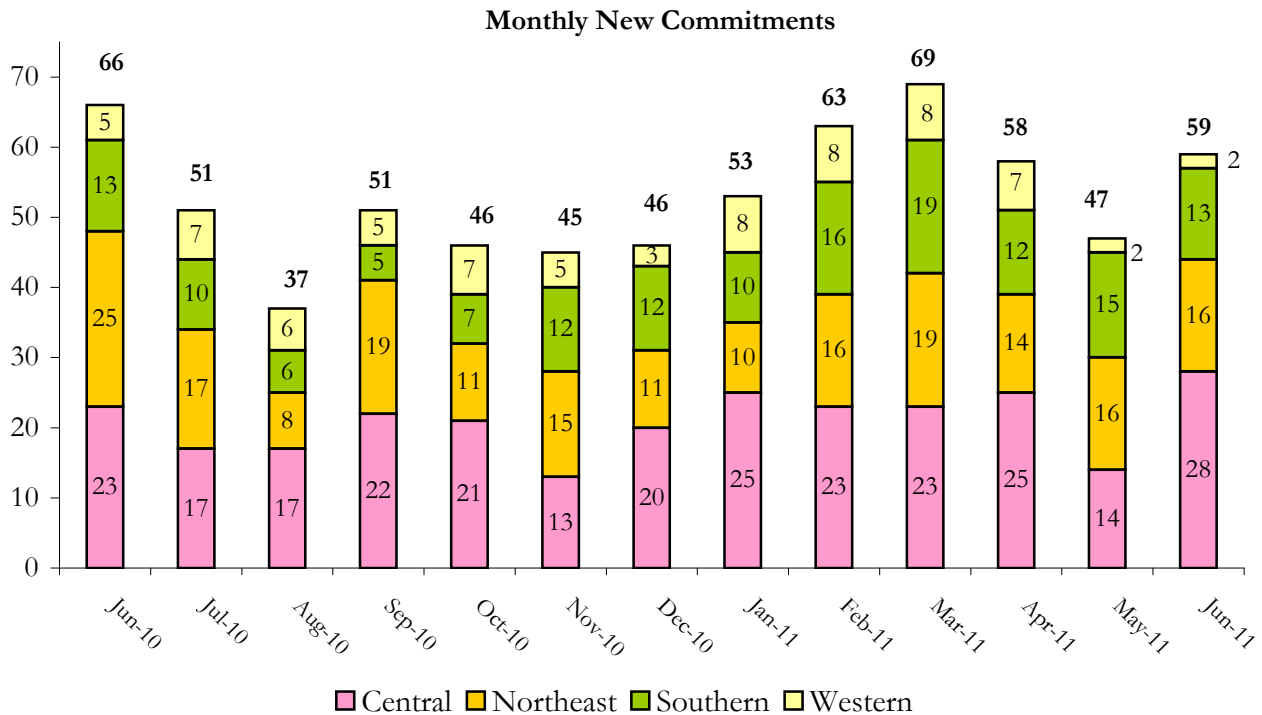
*Other Residential Total may not accurately sum due to Trails-related issues

June 2011 DYC Population Report

IV. Commitment ADP and New Commitments by Region

Commitment ADP			
Region	Monthly		YTD
	June 2011	% Change	
Central Region	438.7	-0.3%	454.9
Northeast Region	274.6	0.3%	270.1
Southern Region	208.8	-1.0%	204.5
Western Region	108.3	-5.8%	108.6
Commitment ADP Total	1,030.5	-0.9%	1,038.1

New Commitments					
By Region	FY 10-11		FY 09-10		% Change from last YTD
	June	YTD	June	YTD	
Central Region	28	254	23	320	-20.6%
Northeast Region	16	178	25	212	-16.0%
Southern Region	13	140	13	124	12.9%
Western Region	2	73	5	75	-2.7%
TOTAL	59	645	66	731	-11.8%



June 2011 DYC Population Report

V. Parole Services

Parole ADP				
Region	June 2011	YTD		% Change from prev YTD
		FY 10-11	FY 09-10	
Central	167.7	187.0	189.4	-1.3%
Northeast	102.7	111.4	123.9	-10.1%
Southern	83.4	80.9	84.6	-4.4%
Western	34.1	39.1	45.3	-13.6%
Total	387.9	418.4	443.2	-5.6%

By Region	Parole Intakes		Parole Discharges		LOS
	June 2011	YTD	June 2011	YTD	
Central Region	17	312	30	352	6.6
Northeast Region	18	192	16	212	6.3
Southern Region	8	141	10	130	7.1
Western Region	5	67	3	75	7.5
TOTAL	48	712	59	769	6.7

Monthly Parole ADP

