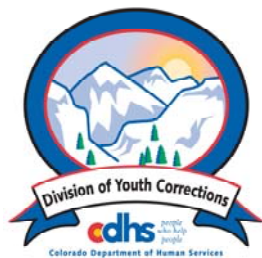


MAY 2011 MONTHLY POPULATION REPORT FY 2010 - 2011

Prepared by the Division of Youth Corrections Research and Evaluation Unit June 24, 2011



Colorado Department of Human Services
Division of Youth Corrections

Working with Colorado Communities to Achieve Justice

May 2011

DYC Population Report

I.	Summary Population Data	1
II.	Detention ADP by Facility	2
III.	Commitment Services	
	A. State and Contract Secure ADP by Facility	3
	B. Community/Other Residential ADP by Facility	4
IV.	ADP and New Commitments by Region	5
V.	Parole Services	6

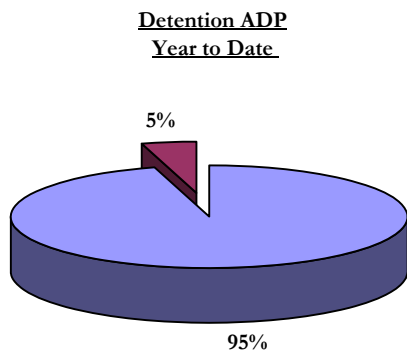
May 2011 DYC Population Report

I. Summary Population Data*

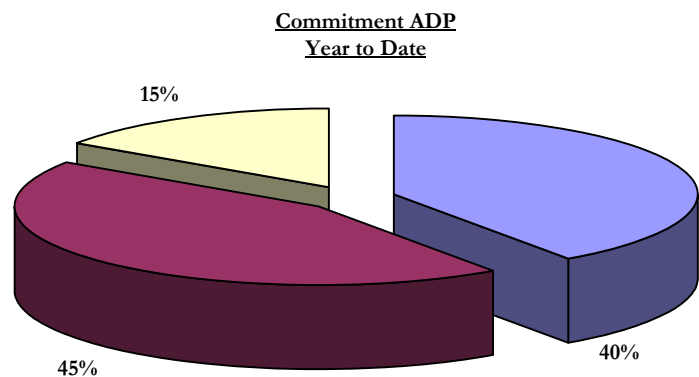
DETAINED YOUTH	Average Daily Population (ADP)		Length of Service (LOS)	
	May 2011	% Change from prev. mo.	YTD	YTD
	State-Operated	359.3	6.1%	337.2
Contracted Staff Secure	17.4	0.2%	16.0	16.4 days
Total Detained	376.7	5.8%	353.2	15.3 days

COMMITTED YOUTH	Average Daily Population (ADP)		Length of Service (LOS)	
	May 2011	% Change from prev. mo.	YTD	YTD
	Assessment	45.90	0.6%	38.52
State Secure	419.4	-9.8%	398.4	
Private Secure/Staff Supervised	433.8	2.0%	436.6	
Community Residential	129.2	-6.0%	152.4	
Other Residential	11.5	1.2%	17.0	
Total Committed Residential	1,039.8	0.1%	1,042.9	18.1 months
<i>Committed Residential w/o Boulder</i>	<i>1,033.9</i>	<i>-0.1%</i>	<i>1,035.9</i>	

PAROLED YOUTH	Average Daily Population (ADP)		Length of Service (LOS)	
	May 2011	% Change from prev. mo.	YTD	YTD
	Total Paroled	397.4	-0.7%	422.3
TOTAL STATEWIDE ADP	1,813.9	1.0%	1,818.4	



■ State-Operated ■ Contracted Staff Secure



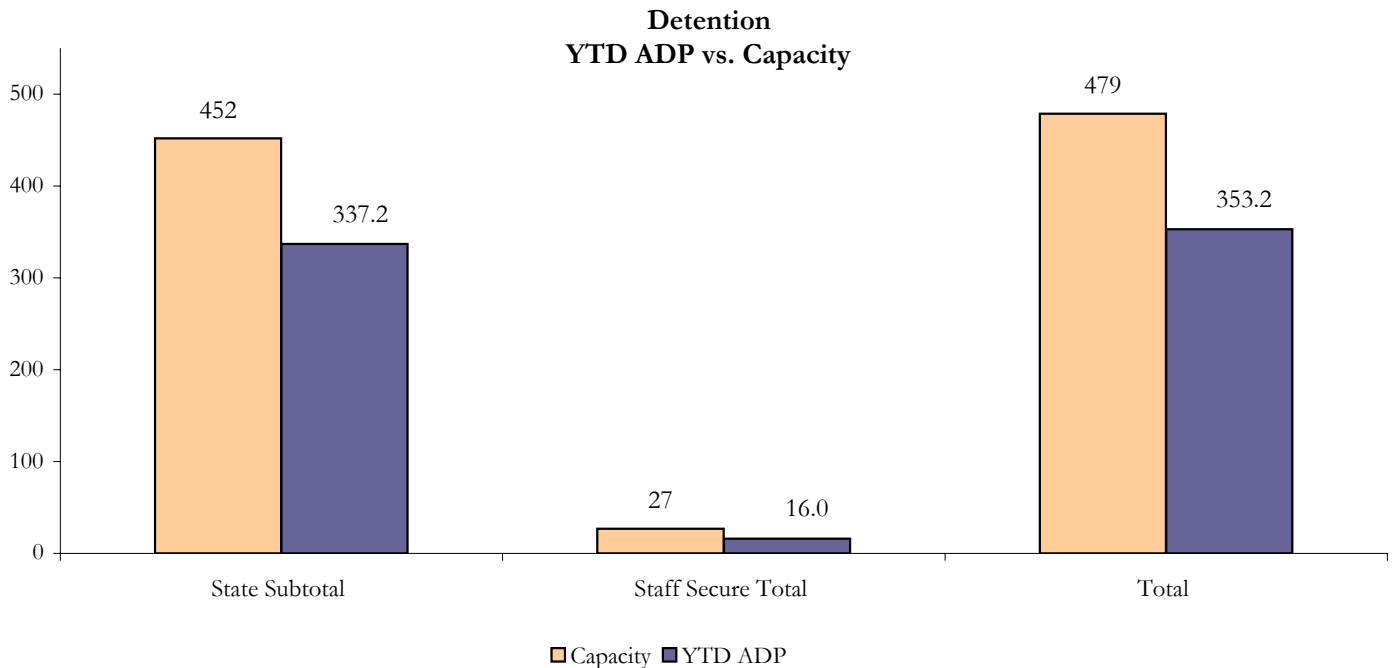
■ State Secure ■ Private Secure/Staff Supervised ■ Community Residential

*Due to rounding, totals shown may not be an exact sum of the subtotals

May 2011 DYC Population Report

II. Detention Data by Facility

Facility	Operating Capacity	Average Daily Population			New Admissions		YTD LOS in Days
		May 2011	YTD	YTD % of Capacity	May 2011	YTD	LOS
<i>State Operated Detention</i>							
Adams	29	23.8	20.8	71.8%	42	495	13.6
Gilliam	73	63.6	64.2	87.9%	110	1,114	19.1
Grand Mesa	33	16.1	20.0	60.5%	36	365	16.1
Marvin Foote	89	73.7	67.9	76.3%	102	1,298	18.1
Mount View	60	39.0	38.7	64.4%	89	931	14.9
Platte Valley	68	62.2	55.2	81.2%	146	1,465	12.3
Pueblo	41	25.8	25.1	61.2%	75	715	11.8
Spring Creek	59	54.9	45.4	77.0%	104	1,024	14.5
<i>State Subtotal</i>	<i>452</i>	<i>359.3</i>	<i>337.2</i>	<i>74.6%</i>	<i>704</i>	<i>7,407</i>	<i>15.2</i>
<i>Staff Secure Detention</i>							
Brown Center	3	1.1	1.5	50.6%	1	24	20.1
Midway (Remington)	8	6.3	4.9	60.6%	12	104	15.4
Robert DeNier	11	5.7	6.5	58.7%	8	142	16.2
Youthtrack San Luis Valley	5	4.4	3.2	63.4%	4	67	16.7
<i>Staff Secure Total</i>	<i>27</i>	<i>17.4</i>	<i>16.0</i>	<i>59.2%</i>	<i>25</i>	<i>337</i>	<i>16.4</i>
TOTAL	479	376.7	353.2	73.7%	729	7,744	15.3



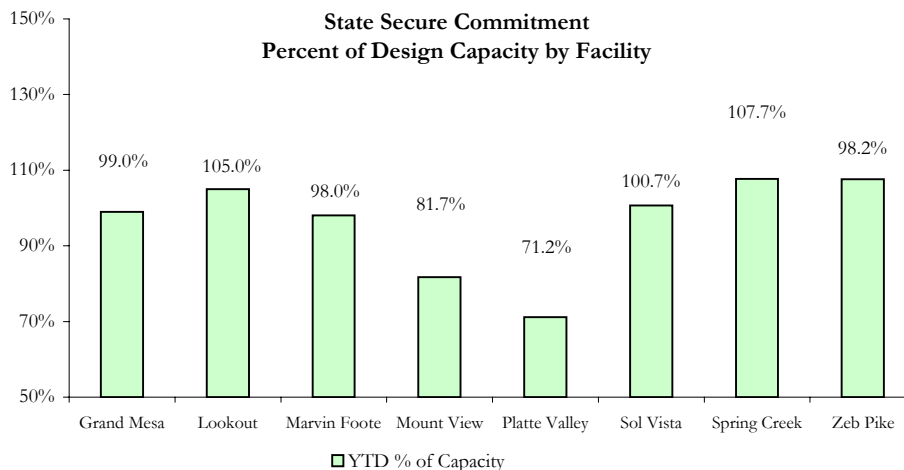
May 2011 DYC Population Report

III. Commitment Services

A. State and Contract Secure ADP by Facility

Facility	Capacity	ADP		YTD % of Design Capacity	YTD % of Budgeted Capacity
		Budgeted Capacity at 110%	May 2011		
Assessment					
Grand Mesa			5.6	5.1	
Mount View			15.6	14.2	
Platte Valley			14.7	11.4	
Spring Creek			9.0	7.6	
Zeb Pike			1.0	0.2	
<i>Assessment Total</i>			45.9	38.5	
State Secure					
Adams	0	0	0.4	0.4	N/A
Gilliam	0	0	0.5	0.6	N/A
Grand Mesa	40	44	39.6	39.5	99.0%
Lookout	152	161	159.6	153.0	105.0%
Marvin Foote	20	24	19.6	16.9	98.0%
Mount View	66	76	53.9	47.8	81.7%
Platte Valley	59	65	42.0	44.5	71.2%
Pueblo	0	0	0.8	0.6	N/A
Sol Vista	20	20	20.1	19.5	100.7%
Spring Creek	41	48	44.2	38.0	107.7%
Zeb Pike	36	40	38.7	37.6	107.6%
<i>State Secure Total</i>	434	478	419.4	398.4	96.6%
<i>State Grand Total (Assessment + Secure)</i>			465.3	437.0	107.2%

Contract Secure/Staff Supervised	May 2011	YTD
Alternative Homes For Youth - Greeley	4.6	5.9
Betty K. Marler Center	40.9	40.0
Brown Center	1.7	2.3
Childrens Ark	4.6	5.7
Devereux Cleo Wallace	22.7	18.9
Gateway Residential Program	2.0	3.7
Hand Up Homes for Youth - West	0.4	0.0
Hilltop (Residential Youth Services)	4.4	4.8
Jefferson Hills Aurora	43.3	41.8
Mountain Star Center	0.0	2.5
Ridge View	272.7	280.3
Robert DeNier	15.1	15.8
Southern Peaks	10.1	7.6
Third Way Center - Lowry	11.2	7.1
<i>Contract Secure Subtotal</i>	433.8	436.6



May 2011

DYC Population Report

III. Commitment Services Continued

B. Community/Other Residential ADP by Facility

<u>Facility</u>	<u>May 2011</u>	<u>YTD</u>
Community		
Ariel Clinical Services	2.0	2.8
Boulder Community Treatment Center	0.0	0.0
Crisis Connection Program	0.0	0.2
Dale House Project	11.0	11.6
Daybreak Princeton Girls Home	0.0	4.9
Denver Area Youth Services (DAYS)	1.0	0.8
Gateway Youth and Family Services	0.0	0.7
Griffith Centers (SR)	6.4	5.6
Griffith Centers for Children, INC - CHINS UP	0.0	1.2
Job Corps	6.0	5.8
Kids Crossing	0.0	1.4
Kidz Ark Sterling	5.0	5.3
Kidz Ark New Raymer Ranch	1.8	1.1
Larimer Community Corrections	0.0	0.5
Longmont Community Treatment Center	0.0	0.1
Lost and Found Inc. Arvada	10.6	10.0
Maple Star	1.0	0.6
Mesa County Community Corrections	2.0	0.9
Mt Evans Qualifying House	9.5	10.4
Reflections For Youth Inc., Grismore	2.0	2.3
Reflections For Youth Inc., Prairie View	0.0	0.8
ROP-Canyon State Academy	1.0	1.0
Savio House	3.1	1.4
Southwest Colorado Community Corrections	0.0	0.2
Summit Treatment Service, Inc	9.2	14.8
Synergy Administration	4.8	7.8
Third Way Center	5.1	4.1
Third Way Center, Pontiac	6.4	6.2
Third Way Center, York	8.6	8.8
Third Way Center, Lincoln	5.8	6.9
Turning Point Center Youth & Family	11.5	15.8
Turning Point, Mathews St.	3.3	6.2
Whimspire Child Placement	0.3	1.2
Youthtrack, San Luis Valley	0.4	2.0
Youthtrack, Work and Learn	11.4	9.0
Youth Ventures (CLOSED)	N/A	N/A
<i>Community Subtotal</i>	<i>129.2</i>	<i>152.4</i>
<i>Private Contract Total</i>	<i>563.0</i>	<i>589.0</i>
Other Residential		
Job Corps Parole Program (Federally funded)	2.5	2.2
Shelter Care (short term)	0.4	1.0
Hospital	0.1	0.0
Immigration Detention Facility	2.9	1.9
Residential Drug/Alcohol Program	0.0	0.6
Residential MH Program	2.3	4.7
Residential Work Program	0.0	0.1
CMHI-Ft.Logan	0.0	0.2
CMHI-Pueblo	0.0	0.3
Other Mental Health Facility	1.8	1.6
<i>Other Residential Total*</i>	<i>11.5</i>	<i>17.0</i>
RESIDENTIAL TOTAL	1,039.8	1,042.9

*Other Residential Total may not accurately sum due to Trails-related issues

May 2011 DYC Population Report

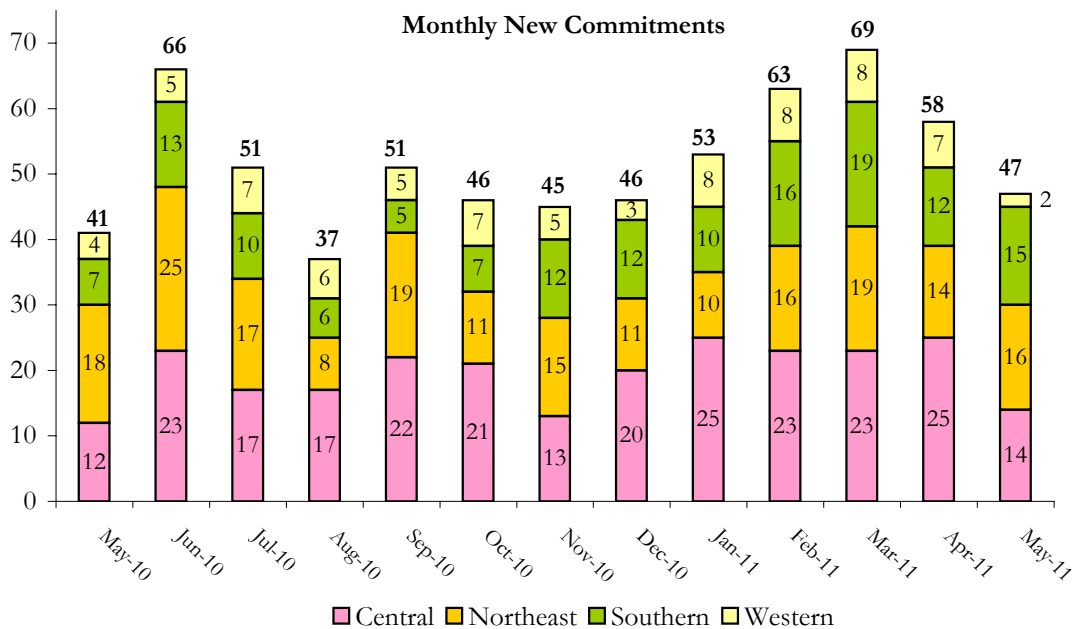
IV. Commitment ADP and New Commitments by Region

Commitment ADP			
Region	% Change from		YTD
	May 2011	prev. mo.	
Central Region	440.1	0.2%	455.0
Northeast Region	273.8	0.3%	273.1
Southern Region	210.9	0.6%	204.7
Western Region	115.0	-1.9%	110.1
Commitment ADP Total	1,039.8	0.1%	1,042.9

New Commitments		
Secure-Need Factors	YTD	%
Secure CCI Score	146	25.0%
Special Sentence	76	13.0%
Recommitments (1+)	64	11.0%
Out-of-Home Placements (2+)	229	39.3%
Escapes (1+)	35	6.0%

New Coms with 0 Factors: 191 (33%)
New Coms with 1 or more Factors: 392 (67%)
New Coms with 2 or more Factors: 141 (24%)

By Region	May 2011	YTD	% Change from last YTD	May 2010	Last YTD
Central Region	14	226	-23.4%	12	295
Northeast Region	16	160	-14.9%	18	188
Southern Region	15	127	14.4%	7	111
Western Region	2	70	0.0%	4	70
New Commitment Total	47	583	-12.2%	41	664



May 2011 DYC Population Report

V. Parole Services

Parole ADP by Region

	<u>May 2011</u>	<u>YTD</u>	<u>Last YTD</u>	<u>% Change from last YTD</u>
Central Region	171.1	187.9	189.5	-0.8%
Northeast Region	106.4	112.8	123.7	-8.9%
Southern Region	84.9	81.9	85.7	-4.4%
Western Region	34.9	39.7	46.6	-14.7%
Parole Total	397.4	422.3	445.5	-5.2%

	<u>Parole Intakes</u>		<u>Parole Discharges</u>		<u>Parole LOS</u>
	<u>May 2011</u>	<u>YTD</u>	<u>May 2011</u>	<u>YTD</u>	<u>YTD</u>
Central Region	17	293	28	319	6.6
Northeast Region	12	174	19	193	6.3
Southern Region	14	133	9	120	7.1
Western Region	4	63	3	72	7.5
Parole Total	47	663	59	704	6.7

Monthly Parole ADP

