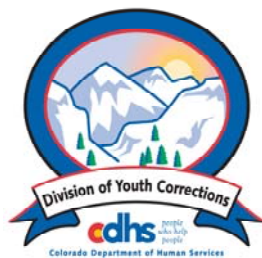


APRIL 2011 MONTHLY POPULATION REPORT FY 2010 - 2011

Prepared by the Division of Youth Corrections Research and Evaluation Unit May 26, 2011



Colorado Department of Human Services
Division of Youth Corrections

Working with Colorado Communities to Achieve Justice

April 2011

DYC Population Report

I.	Summary Population Data	1
II.	Detention ADP by Facility	2
III.	Commitment Services	
	A. State and Contract Secure ADP by Facility	3
	B. Community/Other Residential ADP by Facility	4
IV.	ADP and New Commitments by Region	5
V.	Parole Services	6

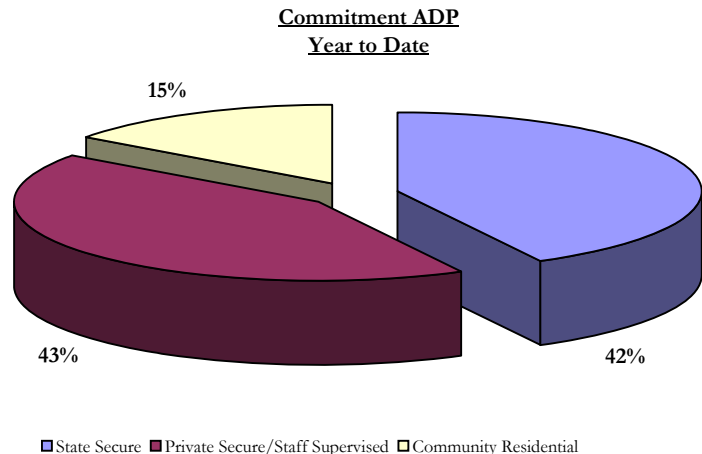
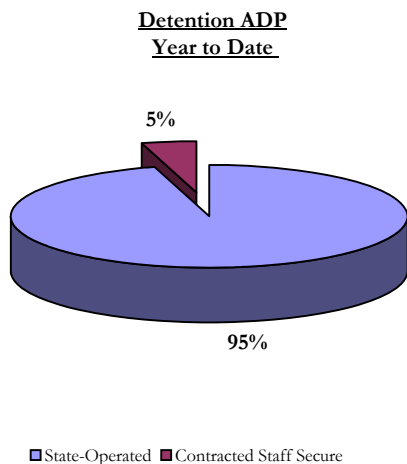
April 2011 DYC Population Report

I. Summary Population Data*

DETAINED YOUTH	Average Daily Population (ADP)			Length of Service (LOS)
	April 2011	% Change from prev. mo.	YTD	YTD
	State-Operated	338.5	-4.7%	334.9
Contracted Staff Secure	17.4	11.1%	15.8	15.6 days
Total Detained	355.9	-4.0%	350.8	15.1 days

COMMITTED YOUTH	Average Daily Population (ADP)			Length of Service (LOS)
	April 2011	% Change from prev. mo.	YTD	YTD
	State Secure	464.8	4.8%	434.1
Private Secure/Staff Supervised	425.4	-1.7%	438.5	
Community Residential	137.4	-3.9%	154.7	
Other Residential	11.4	14.1%	16.5	
Total Committed Residential	1,039.0	1.0%	1,043.8	17.9 months
<i>Committed Residential w/o Boulder</i>	<i>1,035.0</i>	<i>1.2%</i>	<i>1,036.7</i>	

PAROLED YOUTH	Average Daily Population (ADP)			Length of Service (LOS)
	April 2011	% Change from prev. mo.	YTD	YTD
	Total Paroled	400.2	3.4%	425.6
TOTAL STATEWIDE ADP	1,795.1	0.4%	1,820.2	

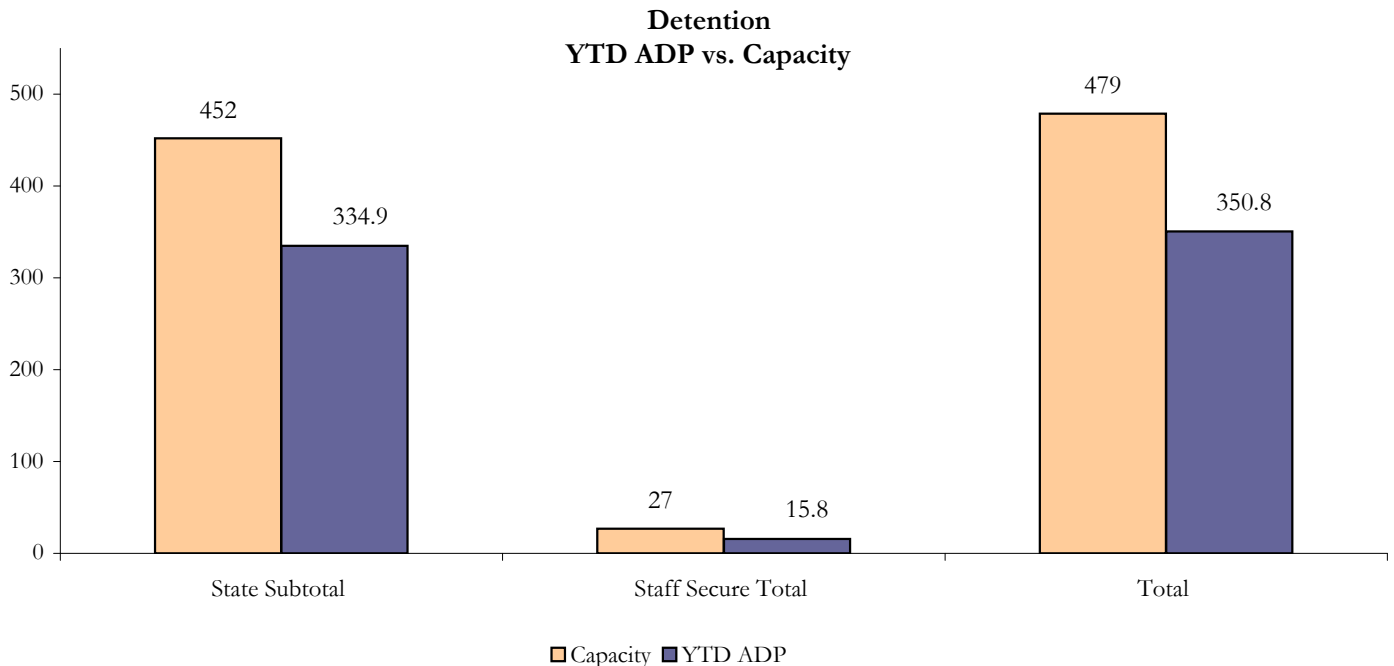


*Due to rounding, totals shown may not be an exact sum of the subtotals

April 2011 DYC Population Report

II. Detention Data by Facility

Facility	Operating Capacity	Average Daily Population		YTD % of Capacity	New Admissions		YTD LOS in Days
		April 2011	YTD		April 2011	YTD	
<i>State Operated Detention</i>							
Adams	29	18.8	20.5	70.7%	56	453	12.9
Gilliam	73	69.6	64.2	88.0%	215	1,004	19.2
Grand Mesa	33	22.3	20.3	61.6%	70	329	16.0
Marvin Foote	89	65.6	67.3	75.6%	236	1,196	17.9
Mount View	60	41.2	38.6	64.4%	186	842	15.0
Platte Valley	68	53.0	54.5	80.1%	271	1,319	12.1
Pueblo	41	20.5	25.0	61.0%	155	640	12.2
Spring Creek	59	47.5	44.4	75.3%	219	920	14.2
<i>State Subtotal</i>	<i>452</i>	<i>338.5</i>	<i>334.9</i>	<i>74.1%</i>	<i>1408</i>	<i>6,703</i>	<i>15.1</i>
<i>Staff Secure Detention</i>							
Brown Center	3	2.3	1.6	52.1%	3	23	16.5
Midway (Remington)	8	4.1	4.7	58.9%	11	92	14.9
Robert DeNier	11	6.9	6.5	59.4%	23	134	16.5
Youthtrack San Luis Valley	5	4.0	3.0	60.9%	17	63	14.5
<i>Staff Secure Total</i>	<i>27</i>	<i>17.4</i>	<i>15.8</i>	<i>58.7%</i>	<i>54</i>	<i>312</i>	<i>15.6</i>
TOTAL	479	355.9	350.8	73.2%	1,462	7,015	15.1



April 2011 DYC Population Report

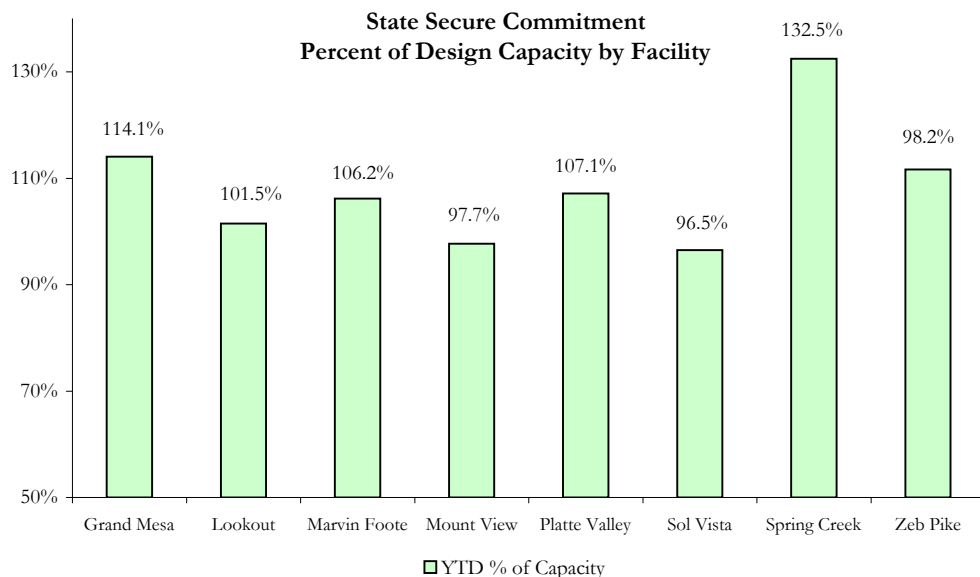
III. Commitment Services

A. State and Contract Secure ADP by Facility

ADP

<u>Facility</u>	Capacity	Budgeted Capacity at 110%	April 2011	YTD	YTD % of Design Capacity	YTD % of Budgeted Capacity
State Secure						
Adams	0	0	1.0	0.4	N/A	N/A
Gilliam	0	0	0.0	0.7	N/A	N/A
Grand Mesa	40	44	45.6	44.6	114.1%	101.4%
Lookout	152	161	154.3	152.4	101.5%	94.6%
Marvin Foote	20	24	21.2	16.6	106.2%	69.3%
Mount View	66	76	64.5	61.3	97.7%	80.6%
Platte Valley	59	65	63.2	55.8	107.1%	85.8%
Pueblo	0	0	1.1	0.6	N/A	N/A
Sol Vista	20	20	19.3	19.4	96.5%	96.9%
Spring Creek	41	48	54.3	44.8	132.5%	93.3%
Zeb Pike	36	40	40.2	37.6	111.7%	94.0%
<i>State Total</i>	<i>434</i>	<i>478</i>	<i>464.8</i>	<i>434.1</i>	<i>107.1%</i>	<i>90.8%</i>

Contract Secure/Staff Supervised	April 2011	YTD
Alternative Homes For Youth - Greeley	4.2	6.4
Betty K. Marler Center	40.9	40.0
Brown Center	3.0	2.4
Childrens Ark	5.9	5.8
Devereux Cleo Wallace	19.3	18.5
Gateway Residential Program	2.7	3.9
Griffith Center for Children, Inc	0.0	0.0
Hilltop (Residential Youth Services)	5.2	4.9
Jefferson Hills Aurora	43.2	42.3
Mountain Star Center	0.7	2.8
Ridge View	272.5	281.7
Robert DeNier	15.7	15.8
Southern Peaks	5.5	7.4
Third Way Center - Lowry	6.7	6.7
<i>Contract Secure Subtotal</i>	<i>425.4</i>	<i>438.5</i>



April 2011

DYC Population Report

III. Commitment Services Continued

B. Community/Other Residential ADP by Facility

<u>Facility</u>	<u>April 2011</u>	<u>YTD</u>
Community		
Ariel Clinical Services	3.6	2.9
Boulder Community Treatment Center	0.0	0.0
Crisis Connection Program	0.0	0.2
Dale House Project	11.0	11.7
Daybreak Princeton Girls Home	0.2	5.4
Denver Area Youth Services (DAYS)	1.0	0.8
Gateway Youth and Family Services	0.0	0.8
Griffith Centers (SR)	6.7	5.6
Griffith Centers for Children, INC - CHINS UP	0.0	1.3
Job Corps	6.9	5.7
Kids Crossing	0.2	1.6
Kidz Ark Sterling	5.0	5.3
Kidz Ark New Raymer Ranch	2.0	1.1
Larimer Community Corrections	0.0	0.5
Longmont Community Treatment Center	0.0	0.1
Lost and Found Inc. Arvada	9.8	9.8
Lost and Found Inc. Morrison	1.0	0.1
Maple Star	1.0	0.5
Mesa County Community Corrections	1.6	0.8
Mt Evans Qualifying House	9.9	10.5
Reflections For Youth Inc., Grismore	2.0	2.3
Reflections For Youth Inc., Prairie View	0.0	0.9
ROP-Canyon State Academy	1.0	1.0
Savio House	2.0	1.3
Southwest Colorado Community Corrections	0.0	0.3
Summit Treatment Service, Inc	10.3	15.3
Synergy Administration	5.0	8.1
Third Way Center	6.7	4.0
Third Way Center, Pontiac	5.4	6.2
Third Way Center, York	9.0	8.8
Third Way Center, Lincoln	7.7	7.1
Turning Point Center Youth & Family	11.2	16.2
Turning Point, Mathews St.	4.4	6.5
Whimspire Child Placement	0.4	1.3
Youthtrack, San Luis Valley	1.0	2.1
Youthtrack, Work and Learn	11.5	8.7
Youth Ventures (CLOSED)	N/A	N/A
<i>Community Subtotal</i>	<i>137.4</i>	<i>154.7</i>
<i>Private Contract Total</i>	<i>562.8</i>	<i>593.2</i>
Other Residential		
Job Corps Parole Program (Federally funded)	2.1	2.2
Shelter Care (short term)	0.7	1.1
Hospital	0.1	0.0
Immigration Detention Facility	2.6	1.8
Residential Drug/Alcohol Program	0.4	0.7
Residential MH Program	2.1	4.9
Residential Work Program	1.1	0.2
CMHI-Ft.Logan	0.2	0.2
CMHI-Pueblo	0.0	0.3
Other Mental Health Facility	2.0	1.6
<i>Other Residential Total*</i>	<i>11.4</i>	<i>16.5</i>
RESIDENTIAL TOTAL	1,039.0	1,043.8

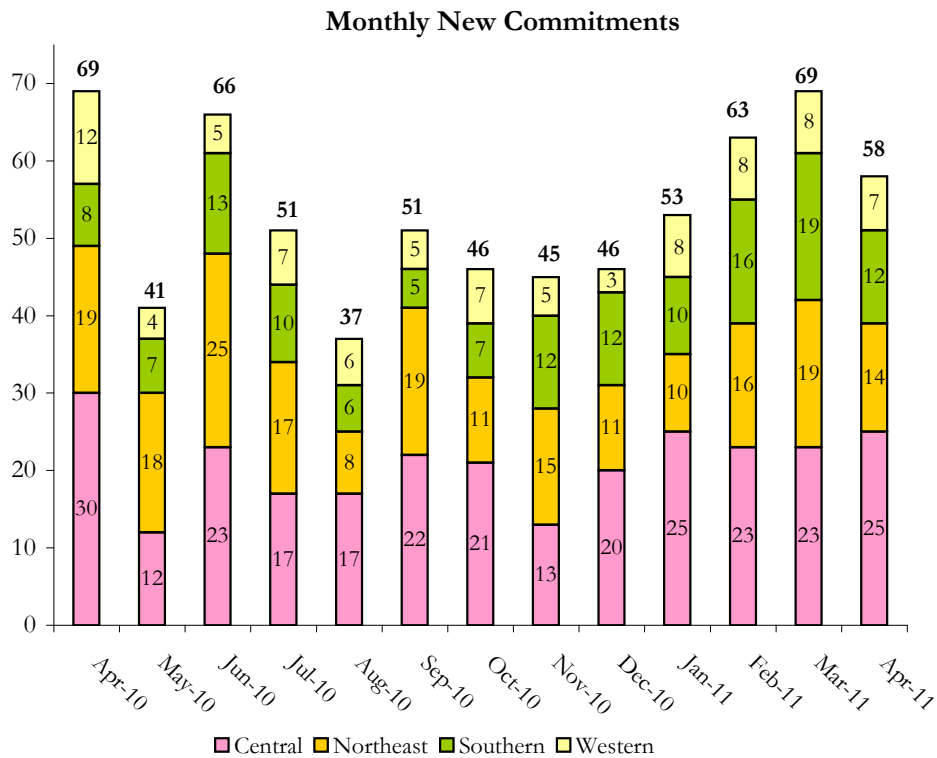
*Other Residential Total may not accurately sum due to Trails-related issues

April 2011 DYC Population Report

IV. Commitment ADP and New Commitments by Region

Commitment ADP			
Region	<u>April 2011</u>	<u>% Change</u> <u>from prev.</u> <u>mo.</u>	<u>YTD</u>
Central Region	439.2	-0.1%	456.4
Northeast Region	272.8	0.9%	273.5
Southern Region	209.7	3.5%	203.7
Western Region	117.2	0.6%	110.1
Commitment ADP Total	1,039.0	1.0%	1,043.8

New Commitments					
	<u>April 2011</u>	<u>YTD</u>	<u>% Change</u> <u>from last</u> <u>YTD</u>	<u>April 2010</u>	<u>Last YTD</u>
Central Region	25	211	-24.9%	30	281
Northeast Region	14	144	-15.3%	19	170
Southern Region	12	112	8.7%	8	103
Western Region	7	69	4.5%	12	66
New Commitment Total	58	536	-13.5%	69	620



April 2011 DYC Population Report

V. Parole Services

Parole ADP by Region				
	<u>April 2011</u>	<u>YTD</u>	<u>Last YTD</u>	<u>% Change from last YTD</u>
Central Region	178.2	190.0	188.3	0.9%
Northeast Region	107.0	112.5	122.5	-8.1%
Southern Region	81.5	81.9	87.2	-6.1%
Western Region	33.6	41.2	44.0	-6.3%
Parole Total	400.2	425.6	441.9	-3.7%

	<u>Parole Intakes</u>		<u>Parole Discharges</u>		<u>Parole LOS</u>
	<u>April 2011</u>	<u>YTD</u>	<u>April 2011</u>	<u>YTD</u>	<u>YTD</u>
Central Region	23	274	24	289	6.6
Northeast Region	16	161	12	172	6.4
Southern Region	10	119	8	107	7.2
Western Region	11	59	5	69	7.1
Parole Total	60	613	49	637	6.7

Monthly Parole ADP

