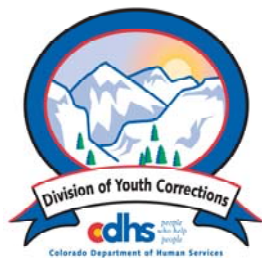


# MARCH 2011 MONTHLY POPULATION REPORT FY 2010 - 2011

---

Prepared by the Division of Youth Corrections Research and Evaluation Unit April 27, 2011



**Colorado Department of Human Services**  
**Division of Youth Corrections**

---

Working with Colorado Communities to Achieve Justice

# March 2011

## DYC Population Report

<b>I.</b>	<b>Summary Population Data</b>	<b>1</b>
<b>II.</b>	<b>Detention ADP by Facility</b>	<b>2</b>
<b>III.</b>	<b>Commitment Services</b>	
	A. State and Contract Secure ADP by Facility	<b>3</b>
	B. Community/Other Residential ADP by Facility	<b>4</b>
<b>IV.</b>	<b>ADP and New Commitments by Region</b>	<b>5</b>
<b>V.</b>	<b>Parole Services</b>	<b>6</b>

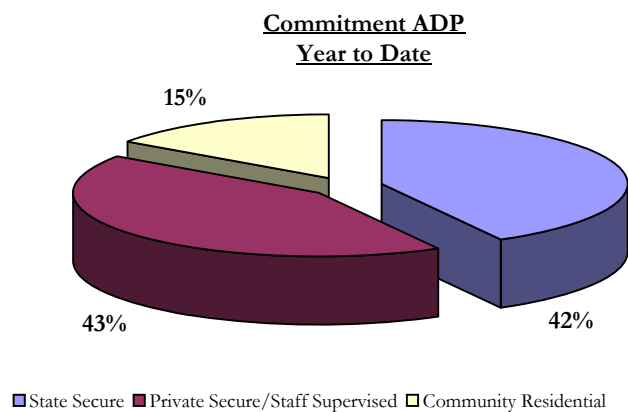
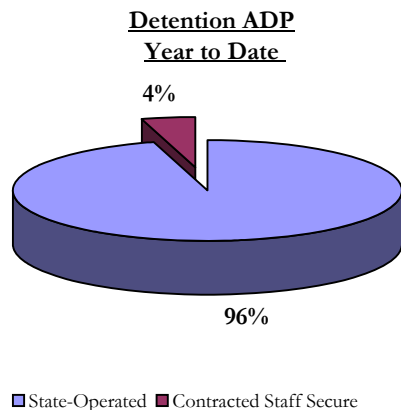
# March 2011 DYC Population Report

## I. Summary Population Data\*

<b>DETAINED YOUTH</b>	<b>Average Daily Population (ADP)</b>			<b>Length of Service (LOS)</b>
	<b>March 2011</b>	<b>% Change from prev. mo.</b>	<b>YTD</b>	<b>YTD</b>
State-Operated	355.2	12.9%	333.6	15.1 days
Contracted Staff Secure	15.7	-12.6%	15.7	15.5 days
<b>Total Detained</b>	<b>370.9</b>	<b>0.7%</b>	<b>349.3</b>	<b>15.1 days</b>

<b>COMMITTED YOUTH</b>	<b>Average Daily Population (ADP)</b>			<b>Length of Service (LOS)</b>
	<b>March 2011</b>	<b>% Change from prev. mo.</b>	<b>YTD</b>	<b>YTD</b>
State Secure	443.3	4.6%	430.8	
Private Secure/Staff Supervised	432.8	-0.8%	440.2	
Community Residential	143.0	-2.5%	156.3	
Other Residential	10.0	-33.9%	15.1	
<b>Total Committed Residential</b>	<b>1,029.1</b>	<b>0.7%</b>	<b>1,042.5</b>	<b>17.7 months</b>
<i>Committed Residential w/ o Boulder</i>	<i>1,023.2</i>	<i>0.8%</i>	<i>1,035.0</i>	

<b>PAROLED YOUTH</b>	<b>Average Daily Population (ADP)</b>			<b>Length of Service (LOS)</b>
	<b>March 2011</b>	<b>% Change from prev. mo.</b>	<b>YTD</b>	<b>YTD</b>
<b>Total Paroled</b>	<b>387.2</b>	<b>-3.6%</b>	<b>429.2</b>	<b>6.7 months</b>
<b>TOTAL STATEWIDE ADP</b>	<b>1,787.2</b>	<b>-0.3%</b>	<b>1,821.1</b>	

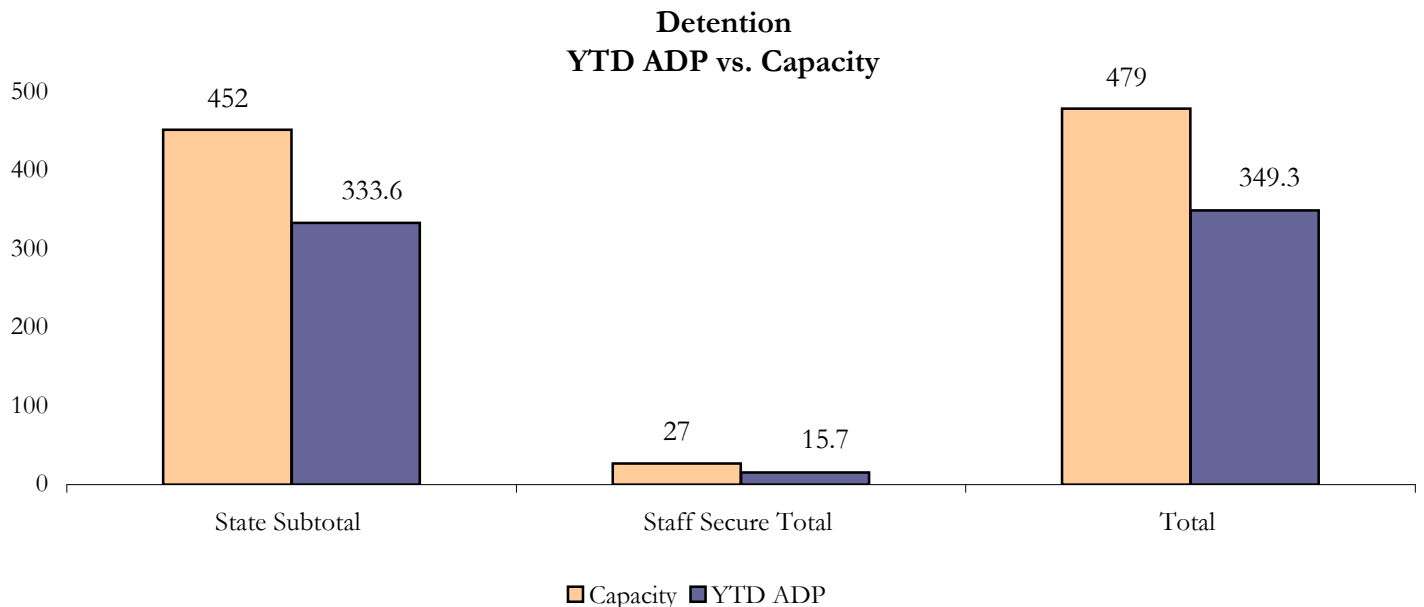


\*Due to rounding, totals shown may not be an exact sum of the subtotals

# March 2011 DYC Population Report

## II. Detention Data by Facility

Facility	Operating Capacity	Average Daily Population		YTD % of Capacity	New Admissions		YTD LOS in Days
		March 2011	YTD		March 2011	YTD	
<i>State Operated Detention</i>							
Adams	29	19.9	20.6	71.0%	26	423	12.5
Gilliam	73	66.3	63.6	87.2%	107	896	18.9
Grand Mesa	33	23.3	20.1	61.0%	34	293	15.7
Marvin Foote	89	70.8	67.5	75.8%	109	1,069	18.0
Mount View	60	45.9	38.3	63.9%	89	745	14.9
Platte Valley	68	54.2	53.9	79.2%	135	1,181	12.4
Pueblo	41	26.0	25.5	62.2%	87	572	12.2
Spring Creek	59	48.7	44.1	74.8%	113	814	14.3
<i>State Subtotal</i>	<i>452</i>	<i>355.2</i>	<i>333.6</i>	<i>73.8%</i>	<i>700</i>	<i>5,993</i>	<i>15.1</i>
<i>Staff Secure Detention</i>							
Brown Center	3	2.5	1.5	49.3%	2	22	16.6
Midway (Remington)	8	5.0	4.8	59.8%	5	86	14.9
Robert DeNier	11	4.9	6.5	59.0%	11	122	16.1
Youthtrack San Luis Valley	5	3.3	2.9	58.8%	14	60	14.9
<i>Staff Secure Total</i>	<i>27</i>	<i>15.7</i>	<i>15.7</i>	<i>58.1%</i>	<i>32</i>	<i>290</i>	<i>15.5</i>
<b>TOTAL</b>	<b>479</b>	<b>370.9</b>	<b>349.3</b>	<b>72.9%</b>	<b>732</b>	<b>6,283</b>	<b>15.1</b>



# March 2011 DYC Population Report

## III. Commitment Services

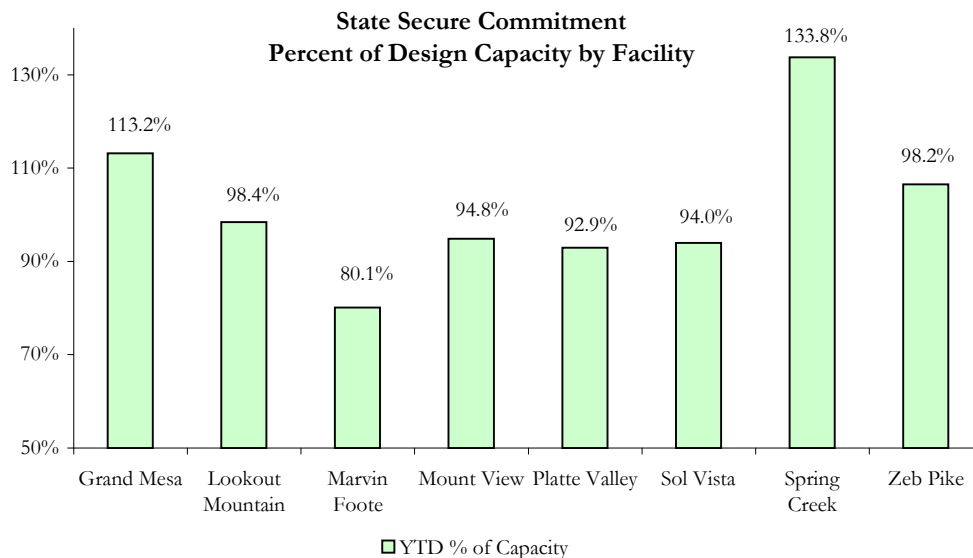
### A. State and Contract Secure ADP by Facility

#### ADP

Facility	Capacity	Budgeted Capacity at			YTD	YTD % of Design Capacity	YTD % of Budgeted Capacity
		110%	March 2011	YTD			
<b>State Secure</b>							
Adams	0	0	1.1	0.4	N/A	N/A	
Gilliam	0	0	1.8	0.7	N/A	N/A	
Grand Mesa	40	44	45.3	44.5	113.2%	101.2%	
Lookout	152	161	149.6	152.2	98.4%	94.5%	
Marvin Foote	20	24	16.0	16.1	80.1%	67.2%	
Mount View	66	76	62.6	60.9	94.8%	80.1%	
Platte Valley	59	65	54.8	55.0	92.9%	84.6%	
Pueblo	0	0	0.1	0.6	N/A	N/A	
Sol Vista	20	20	18.8	19.4	94.0%	97.0%	
Spring Creek	41	48	54.8	43.7	133.8%	91.1%	
Zeb Pike	36	40	38.4	37.3	106.5%	93.3%	
<i>State Total</i>	<i>434</i>	<i>478</i>	<i>443.3</i>	<i>430.8</i>	<i>102.2%</i>	<i>90.1%</i>	

#### **Contract Secure/Staff Supervised**

Alternative Homes For Youth - Greeley	5.0	6.6
Betty K. Marler Center	40.5	39.9
Brown Center	4.0	2.3
Childrens Ark	5.4	5.8
Devereux Cleo Wallace	20.9	18.4
Gateway Residential Program	4.8	4.0
Griffith Center for Children, Inc	1.0	0.3
Hilltop (Residential Youth Services)	3.6	4.8
Jefferson Hills Aurora	41.9	42.3
Mountain Star Center	1.0	3.0
Ridge View	277.4	282.7
Robert DeNier	16.0	15.8
Southern Peaks	5.8	7.6
Third Way Center - Lowry	5.7	6.7
<i>Contract Secure Subtotal</i>	<i>432.8</i>	<i>440.2</i>



# March 2011

## DYC Population Report

### III. Commitment Services Continued

#### B. Community/Other Residential ADP by Facility

<u>Facility</u>	<u>March 2011</u>	<u>YTD</u>
<b>Community</b>		
Ariel Clinical Services	3.6	2.8
Boulder Community Treatment Center	0.0	0.0
Crisis Connection Program	0.0	0.2
Dale House Project	11.1	11.7
Daybreak Princeton Girls Home	2.8	6.0
Denver Area Youth Services (DAYS)	1.4	0.7
Gateway Youth and Family Services	0.0	0.9
Griffith Centers (SR)	5.8	5.1
Griffith Centers for Children, INC - CHINS UP	0.2	1.4
Job Corps	5.4	5.6
Kids Crossing	1.0	1.7
Kidz Ark Sterling	5.0	5.4
Kidz Ark New Raymer Ranch	2.0	1.0
Larimer Community Corrections	0.0	0.6
Longmont Community Treatment Center	0.0	0.1
Lost and Found Inc. Arvada	9.7	9.9
Maple Star	1.0	0.5
Mesa County Community Corrections	0.8	0.7
Mt Evans Qualifying House	11.7	10.6
Reflections For Youth Inc., Grismore	2.1	2.3
Reflections For Youth Inc., Prairie View	0.0	1.0
ROP-Canyon State Academy	1.0	1.0
Savio House	2.0	1.2
Southwest Colorado Community Corrections	0.0	0.3
Summit Treatment Service, Inc	14.2	15.9
Synergy Administration	5.8	8.4
Third Way Center	5.3	3.7
Third Way Center, Pontiac	5.2	6.3
Third Way Center, York	10.0	8.7
Third Way Center, Lincoln	6.6	7.0
Turning Point Center Youth & Family	11.4	16.8
Turning Point, Mathews St.	5.0	6.8
Whimspire Child Placement	1.0	1.4
Youthtrack, San Luis Valley	1.0	2.2
Youthtrack, Work and Learn	10.9	8.4
Youth Ventures (CLOSED)	N/A	N/A
<i>Community Subtotal</i>	<i>143.0</i>	<i>156.3</i>
<i>Private Contract Total</i>	<i>575.8</i>	<i>596.6</i>
<b>Other Residential</b>		
Job Corps Parole Program (Federally funded)	1.0	2.2
Shelter Care (short term)	0.2	1.2
Hospital	0.0	0.0
Immigration Detention Facility	1.7	1.8
Residential Drug/Alcohol Program	1.6	0.7
Residential MH Program	4.2	5.2
Residential Work Program	0.2	0.1
CMHI-Ft.Logan	0.0	0.2
CMHI-Pueblo	0.0	0.4
Other Mental Health Facility	2.0	1.5
<i>Other Residential Total*</i>	<i>10.0</i>	<i>15.1</i>
<b>RESIDENTIAL TOTAL</b>	<b>1,029.1</b>	<b>1,042.5</b>

\*Other Residential Total may not accurately sum due to Trails-related issues

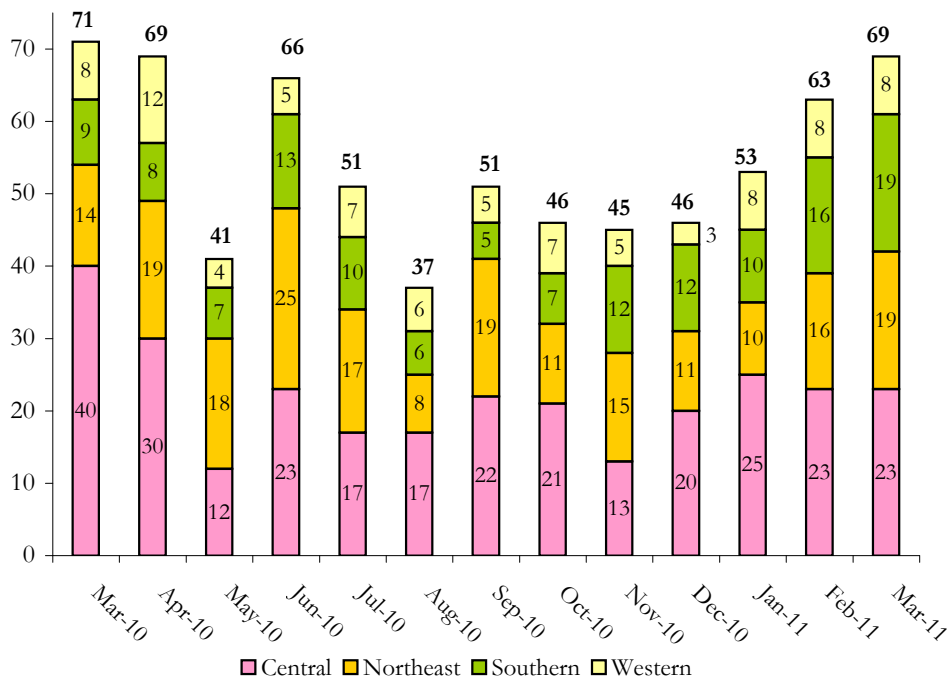
# March 2011 DYC Population Report

## IV. Commitment ADP and New Commitments by Region

Region	March 2011	% Change	
		from prev. mo.	YTD
Central Region	439.5	-1.8%	456.4
Northeast Region	270.5	3.9%	274.0
Southern Region	202.5	1.9%	203.0
Western Region	116.5	0.9%	109.1
<b>Commitment ADP Total</b>	<b>1,029.1</b>	<b>0.7%</b>	<b>1,042.5</b>

Region	March 2011	YTD	% Change		March 2010	Last YTD
			from last YTD	YTD		
Central Region	23	186	-25.0%		40	248
Northeast Region	19	129	-14.6%		14	151
Southern Region	19	100	5.3%		9	95
Western Region	8	60	13.2%		8	53
<b>New Commitment Total</b>	<b>69</b>	<b>475</b>	<b>-13.2%</b>		<b>71</b>	<b>547</b>

**Monthly New Commitments**



# March 2011 DYC Population Report

## V. Parole Services

### Parole ADP by Region

	<u>March 2011</u>	<u>YTD</u>	<u>Last YTD</u>	<u>% Change from last YTD</u>
Central Region	177.9	192.1	182.6	5.2%
Northeast Region	105.1	113.3	121.8	-6.9%
Southern Region	77.7	81.9	88.7	-7.6%
Western Region	26.4	41.9	43.6	-3.8%
<b>Parole Total</b>	<b>387.2</b>	<b>429.2</b>	<b>436.6</b>	<b>-1.7%</b>

### Parole Intakes      Parole Discharges      Parole LOS

	<u>March 2011</u>	<u>YTD</u>	<u>March 2011</u>	<u>YTD</u>	<u>YTD</u>
Central Region	29	251	21	265	6.7
Northeast Region	17	145	13	156	6.4
Southern Region	14	109	14	99	7.2
Western Region	8	48	1	64	7.0
<b>Parole Total</b>	<b>68</b>	<b>553</b>	<b>49</b>	<b>584</b>	<b>6.7</b>

### Monthly Parole ADP

