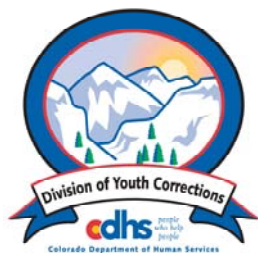


# JANUARY 2011 MONTHLY POPULATION REPORT FY 2010 - 2011

---

Prepared by the Division of Youth Corrections Research and Evaluation Unit February 23, 2011



**Colorado Department of Human Services**  
**Division of Youth Corrections**

---

Working with Colorado Communities to Achieve Justice

# January 2011 DYC Population Report

<b>I.</b>	<b>Summary Population Data</b>	<b>1</b>
<b>II.</b>	<b>Detention ADP by Facility</b>	<b>2</b>
<b>III.</b>	<b>Commitment Services</b>	
	A. State and Contract Secure ADP by Facility	<b>3</b>
	B. Community/Other Residential ADP by Facility	<b>4</b>
<b>IV.</b>	<b>ADP and New Commitments by Region</b>	<b>5</b>
<b>V.</b>	<b>Parole Services</b>	<b>6</b>

# January 2011 DYC Population Report

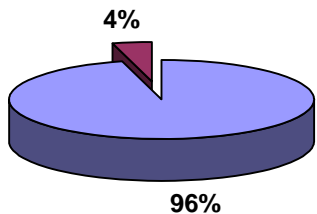
## I. Summary Population Data\*

DETAINED YOUTH	Average Daily Population (ADP)			Length of Stay (LOS)
	January 2011	% Change from prev. mo.	YTD	YTD
State-Operated	324.9	3.3%	329.5	15.1 days
Contracted Staff Secure	14.6	-0.7%	14.4	13.5 days
<b>Total Detained</b>	<b>339.5</b>	<b>3.1%</b>	<b>343.9</b>	<b>15.1 days</b>

COMMITTED YOUTH	Average Daily Population (ADP)			Length of Service (LOS)
	January 2011		YTD	YTD
State Secure	414.6	-1.0%	429.8	
Private Secure/Staff Supervised	436.8	-1.7%	444.8	
Community Residential	153.8	-0.6%	158.6	
Other Residential	16.8	9.5%	18.2	
<b>Total Committed Residential</b>	<b>1,022.0</b>	<b>-1.1%</b>	<b>1,051.4</b>	<b>17.6 months</b>
<i>Committed Residential w/o Boulder</i>	<i>1,014.4</i>	<i>-1.0%</i>	<i>1,043.6</i>	

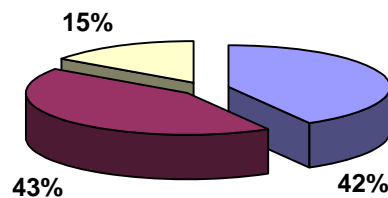
PAROLED YOUTH	Average Daily Population (ADP)			Length of Service (LOS)
	January 2011		YTD	YTD
Total Paroled	424.9	2.0%	436.3	6.8 months
<b>TOTAL STATEWIDE ADP</b>	<b>1,786.4</b>	<b>0.4%</b>	<b>1,831.7</b>	

**Detention ADP**  
**Year to Date**



■ State-Operated  
■ Contracted Staff Secure

**Commitment ADP**  
**Year to Date**



■ State Secure  
■ Private Secure/Staff Supervised  
■ Community Residential

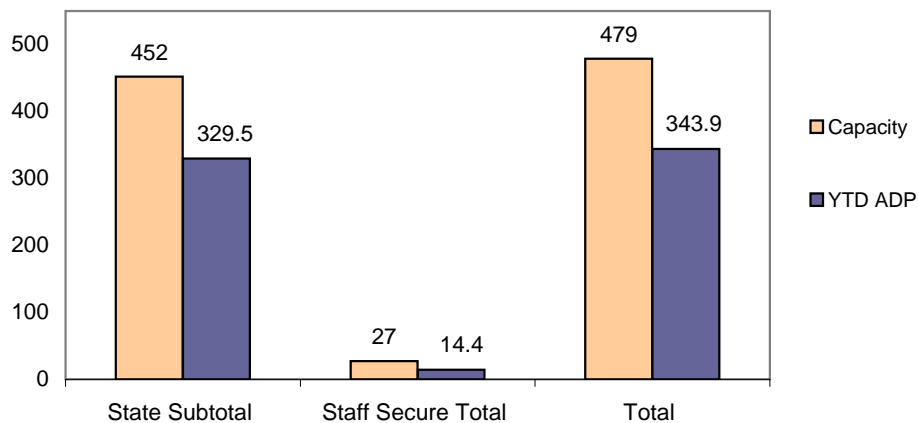
\*Due to rounding, totals shown may not be an exact sum of the subtotals

# January 2011 DYC Population Report

## II. Detention Data by Facility

Facility	Average Daily Population				New Admissions		YTD LOS in Days
	Operating Capacity	January 2011	YTD	YTD % of Capacity	January 2011	YTD	LOS
<i>State Operated Detention</i>							
Adams	29	19.3	21.0	72.3%	44	359	12.0
Gilliam	73	68.7	62.8	86.1%	107	692	19.5
Grand Mesa	33	17.4	18.7	56.6%	27	224	15.5
Marvin Foote	89	62.6	67.3	75.6%	103	848	18.0
Mount View	60	32.9	36.4	60.7%	68	574	15.0
Platte Valley	68	51.0	54.4	80.0%	133	934	12.2
Pueblo	41	29.0	25.3	61.8%	73	435	12.4
Spring Creek	59	43.9	43.7	74.0%	81	627	14.7
<i>State Subtotal</i>	<i>452</i>	<i>324.9</i>	<i>329.5</i>	<i>72.9%</i>	<i>636</i>	<i>4,693</i>	<i>15.1</i>
<i>Staff Secure Detention</i>							
Brown Center	3	0.9	1.3	42.7%	2	16	16.5
Midway (Remington)	8	3.8	4.8	60.4%	11	72	14.4
Robert DeNier	11	6.3	5.6	50.5%	15	97	12.2
Youthtrack San Luis Valley	5	3.5	2.7	54.8%	8	43	13.8
<i>Staff Secure Total</i>	<i>27</i>	<i>14.6</i>	<i>14.4</i>	<i>53.3%</i>	<i>36</i>	<i>228</i>	<i>13.5</i>
<b>TOTAL</b>	<b>479</b>	<b>339.5</b>	<b>343.9</b>	<b>71.8%</b>	<b>672</b>	<b>4,921</b>	<b>15.1</b>

**Detention  
YTD ADP vs. Capacity**

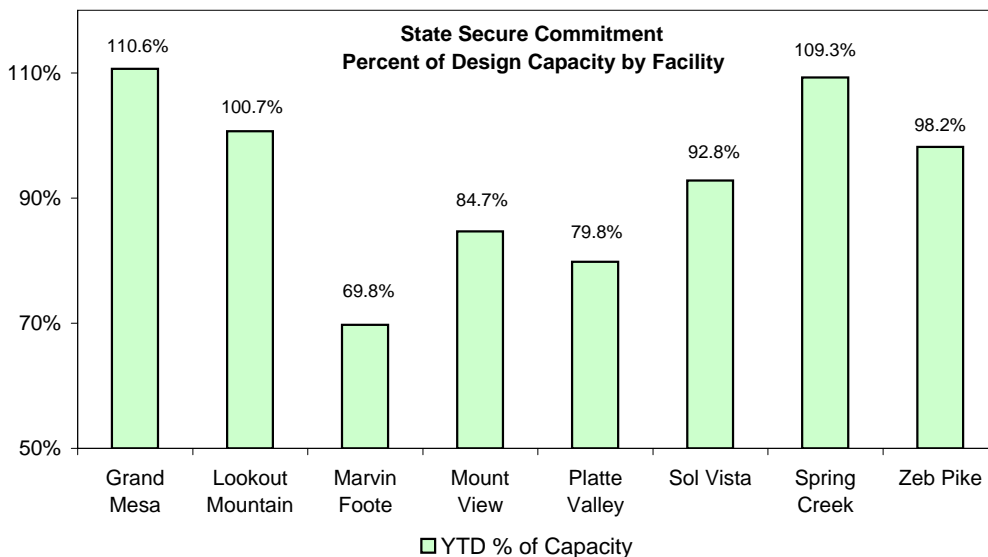


# January 2011 DYC Population Report

## III. Commitment Services

### A. State and Contract Secure ADP by Facility

Facility	Capacity	Budgeted Capacity at 110%	ADP		YTD % of Design Capacity	YTD % of Budgeted Capacity
			January 2011	YTD		
<b>State Secure</b>						
Adams	0	0	0.0	0.2	N/A	N/A
Gilliam	0	0	0.7	0.6	N/A	N/A
Grand Mesa	40	44	44.3	43.9	110.6%	99.8%
Lookout	152	161	153.0	152.7	100.7%	94.9%
Marvin Foote	20	24	14.0	16.5	69.8%	68.6%
Mount View	66	76	55.9	60.7	84.7%	79.9%
Platte Valley	59	65	47.1	55.7	79.8%	85.8%
Pueblo	0	0	1.0	0.7	N/A	N/A
Sol Vista	20	20	18.6	19.7	92.8%	98.3%
Spring Creek	41	48	44.8	41.8	109.3%	87.1%
Zeb Pike	36	40	35.3	37.3	98.2%	93.2%
<i>State Total</i>	<i>434</i>	<i>478.0</i>	<i>414.6</i>	<i>429.8</i>	<i>95.5%</i>	<i>89.9%</i>
<b>Contract Secure/Staff Supervised</b>						
Alternative Homes For Youth - Greeley			5.7	7.0		
Betty K. Marler Center			40.4	40.7		
Brown Center			2.0	1.9		
Childrens Ark			6.7	5.7		
Devereux Cleo Wallace			20.7	17.4		
Gateway Residential Program			4.4	3.9		
Griffith Center for Children, Inc			0.7	0.1		
Hilltop (Residential Youth Services)			6.5	5.2		
Jefferson Hills Aurora			40.8	42.6		
Mountain Star Center			3.0	3.4		
Ridge View			275.0	286.1		
Robert DeNier			16.1	15.9		
Southern Peaks			8.2	8.0		
Third Way Center - Lowry			6.7	6.9		
<i>Contract Secure Subtotal</i>			<i>436.8</i>	<i>444.8</i>		



# January 2011 DYC Population Report

## III. Commitment Services Continued B. Community/Other Residential ADP by Facility

<u>Facility</u>	<u>January 2011</u>	<u>YTD</u>
<b>Community</b>		
Ariel Clinical Services	2.3	2.6
Boulder Community Treatment Center	0.0	0.0
Crisis Connection Program	0.0	0.3
Dale House Project	13.6	11.9
Daybreak Princeton Girls Home	5.1	6.6
Denver Area Youth Services (DAYS)	1.7	0.6
Gateway Youth and Family Services	1.2	2.6
Griffith Centers (SR)	4.8	5.0
Job Corps	4.5	5.7
Kidz Ark Sterling	5.0	5.5
Kidz Ark New Raymer Ranch	1.4	0.7
Larimer Community Corrections	1.0	0.7
Longmont Community Treatment Center	0.0	0.2
Lost and Found Inc. Arvada	9.5	9.9
Maple Star	1.0	0.4
Mesa County Community Corrections	0.0	0.8
Mt Evans Qualifying House	10.1	10.2
Reflections For Youth Inc., Grismore	4.0	2.3
Reflections For Youth Inc., Prairie View	0.0	1.2
ROP-Canyon State Academy	1.0	1.0
Savio House	2.0	1.0
Southwest Colorado Community Corrections	0.0	0.4
Summit Treatment Service, Inc	14.2	16.2
Synergy Administration	9.1	8.8
Third Way Center	3.0	3.5
Third Way Center, Pontiac	4.6	6.1
Third Way Center, York	9.9	8.4
Third Way Center, Lincoln	6.5	7.2
Turning Point Center (Boys Residential)	13.5	18.3
Turning Point, Mathews St.	6.6	7.1
Youthtrack, San Luis Valley	3.5	2.5
Youthtrack, Work and Learn	10.6	7.7
Youth Ventures	4.0	3.4
<i>Community Subtotal</i>	<i>153.8</i>	<i>158.6</i>
<i>Private Contract Total</i>	<i>590.6</i>	<i>603.4</i>
<b>Other Residential</b>		
Job Corps Parole Program (Federally funded)	1.7	2.5
Shelter Care (short term)	1.0	1.6
Hospital	0.1	0.0
Immigration Detention Facility	0.0	1.9
Residential MH Program	5.9	5.3
Residential Drug/Alcohol Program	0.3	0.5
Residential Work Program	0.1	0.2
CMHI-Ft.Logan	0.0	0.3
CMHI-Pueblo	0.8	0.4
Other Mental Health Facility	2.0	1.4
<i>Other Residential Total*</i>	<i>16.8</i>	<i>18.2</i>
<b>RESIDENTIAL TOTAL</b>	<b>1,022.0</b>	<b>1,051.4</b>

\*Other Residential Total may not accurately sum due to Trails-related issues

# January 2011 DYC Population Report

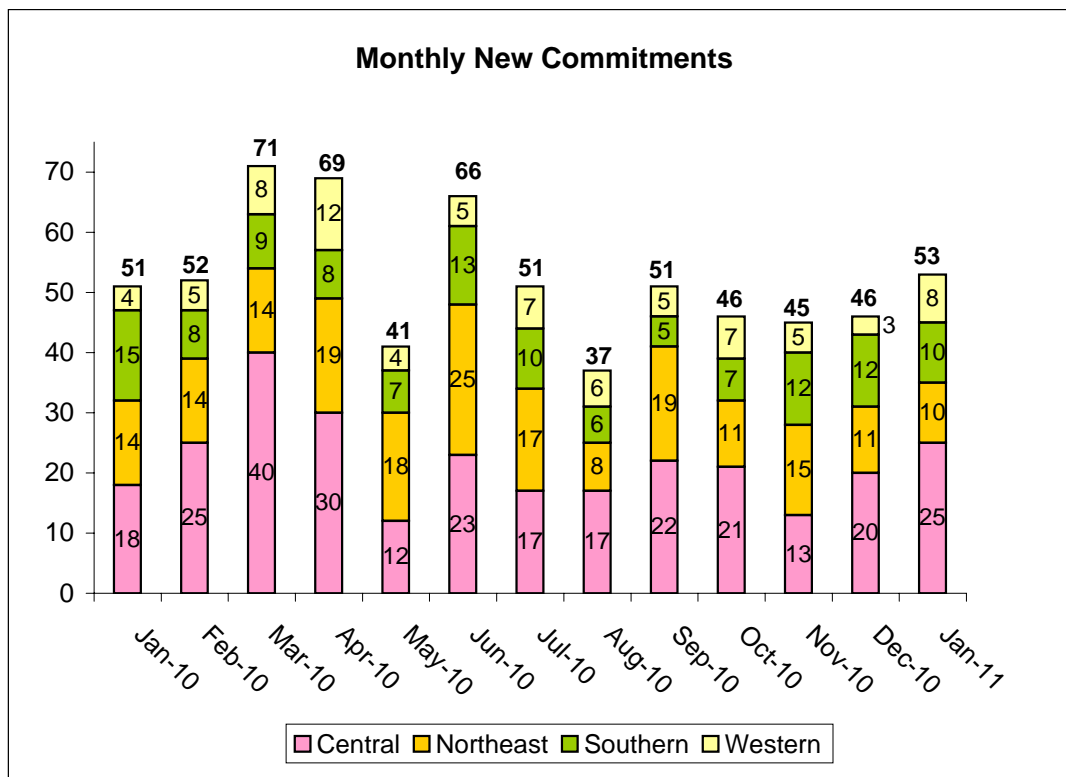
## IV. Commitment ADP and New Commitments by Region

### Commitment ADP by Region

Region	January	% Change	YTD
	2011	from prev. mo.	
Central Region	451.9	-2.6%	465.0
Northeast Region	259.2	-2.1%	276.3
Southern Region	198.1	-0.2%	202.8
Western Region	112.8	6.2%	107.3
<b>Commitment ADP Total</b>	<b>1,022.0</b>	<b>-1.1%</b>	<b>1,051.4</b>

### New Commitments by Region

Region	January	YTD	% Change	January	Last YTD
	2011		from last YTD	2010	
Central Region	25	139	-23.6%	18	182
Northeast Region	10	94	-21.0%	14	119
Southern Region	10	65	-16.7%	15	78
Western Region	8	43	13.2%	4	38
<b>New Commitment Total</b>	<b>53</b>	<b>341</b>	<b>-18.2%</b>	<b>51</b>	<b>417</b>



# January 2011 DYC Population Report

## V. Parole Services

### Parole ADP by Region

	<u>January 2011</u>	<u>YTD</u>	<u>Last YTD</u>	<u>% Change from last YTD</u>
Central Region	190.85	195.11	175.6	11.1%
Northeast Region	110.89	115.75	121.9	-5.0%
Southern Region	84.47	81.57	88.6	-8.0%
Western Region	38.72	43.90	43.9	0.1%
<b>Parole Total</b>	<b>424.9</b>	<b>436.3</b>	<b>429.9</b>	<b>1.5%</b>

### Parole Intakes

### Parole Discharges

### Parole LOS

	<u>January 2011</u>	<u>YTD</u>	<u>January 2011</u>	<u>YTD</u>	<u>YTD</u>
Central Region	34	207	27	206	6.8
Northeast Region	14	116	17	130	6.4
Southern Region	13	84	8	68	7.1
Western Region	4	37	10	50	7.2
<b>Parole Total</b>	<b>65</b>	<b>444</b>	<b>62</b>	<b>454</b>	<b>6.8</b>

### Monthly Parole ADP

