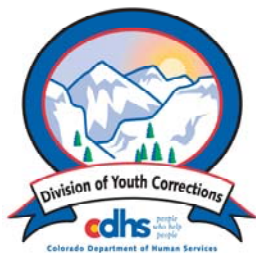


NOVEMBER 2010 MONTHLY POPULATION REPORT FY 2010 - 2011

Prepared by the Division of Youth Corrections Research and Evaluation Unit January 5, 2011



Colorado Department of Human Services
Division of Youth Corrections

Working with Colorado Communities to Achieve Justice

November 2010

DYC Population Report

I.	Summary Population Data	1
II.	Detention ADP by Facility	2
III.	Commitment Services	
	A. State and Contract Secure ADP by Facility	3
	B. Community/Other Residential ADP by Facility	4
IV.	ADP and New Commitments by Region	5
V.	Parole Services	6

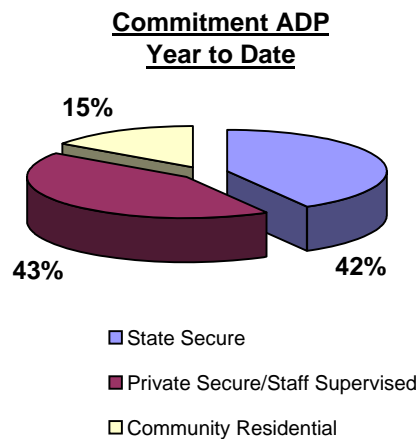
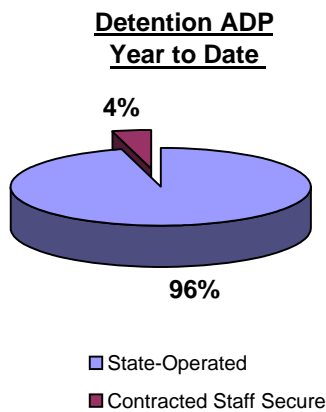
November 2010 DYC Population Report

I. Summary Population Data*

DETAINED YOUTH	Average Daily Population (ADP)			Length of Stay (LOS)
	November 2010	% Change from prev. mo.	YTD	YTD
State-Operated	335.6	-2.1%	334.0	15.2 days
Contracted Staff Secure	13.9	-10.1%	14.5	14.7 days
Total Detained	349.5	-2.5%	348.5	15.2 days

COMMITTED YOUTH	Average Daily Population (ADP)			Length of Service (LOS)
	November 2010		YTD	YTD
State Secure	420.5	-1.6%	435.0	
Private Secure/Staff Supervised	441.3	-0.8%	446.9	
Community Residential	166.0	4.0%	160.3	
Other Residential	16.7	-3.3%	17.9	
Total Committed Residential	1,044.5	-0.4%	1,060.1	17.7 months
<i>Committed Residential w/o Boulder</i>	<i>1,035.6</i>	<i>-0.5%</i>	<i>1,052.4</i>	

PAROLED YOUTH	Average Daily Population (ADP)			Length of Service (LOS)
	November 2010		YTD	YTD
Total Paroled	421.2	-3.2%	442.0	6.8 months
TOTAL STATEWIDE ADP	1,815.2	-1.5%	1,850.6	



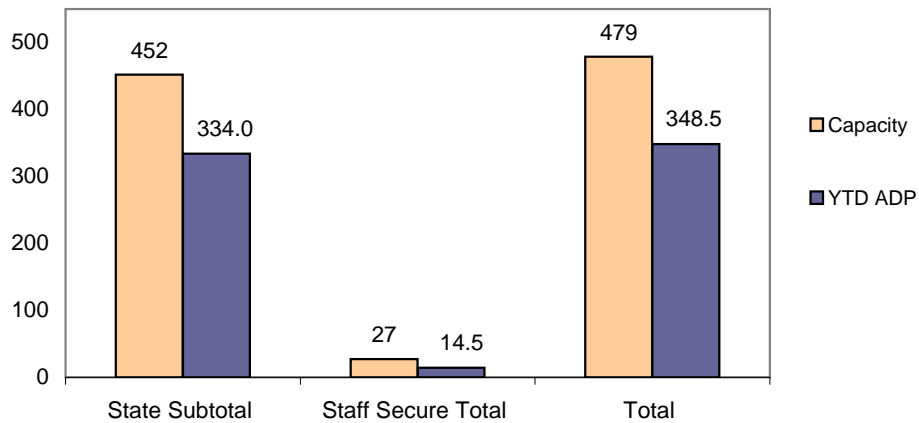
*Due to rounding, totals shown may not be an exact sum of the subtotals

November 2010 DYC Population Report

II. Detention ADP by Facility

Facility	Average Daily Population				New Admissions		YTD LOS in Days
	Operating Capacity	November 2010	YTD	YTD % of Capacity	November 2010	YTD	LOS
<i>State Operated Detention</i>							
Adams	29	22.0	22.0	75.7%	34	277	11.6
Gilliam	73	61.6	61.1	83.6%	96	473	19.7
Grand Mesa	33	13.8	18.9	57.2%	32	162	15.0
Marvin Foote	89	69.7	69.2	77.7%	138	637	18.2
Mount View	60	33.8	38.1	63.5%	87	429	16.3
Platte Valley	68	55.3	57.6	84.7%	125	689	12.0
Pueblo	41	26.5	24.5	59.7%	64	293	13.0
Spring Creek	59	52.9	42.7	72.4%	109	449	13.9
<i>State Subtotal</i>	<i>452</i>	<i>335.6</i>	<i>334.0</i>	<i>73.9%</i>	<i>685</i>	<i>3,409</i>	<i>15.2</i>
<i>Staff Secure Detention</i>							
Brown Center	3	0.7	1.4	45.7%	3	11	17.3
Midway (Remington)	8	5.1	5.4	68.0%	9	56	14.3
Robert DeNier	11	7.1	5.2	47.1%	17	66	13.4
Youthtrack San Luis Valley	5	1.0	2.5	49.9%	3	26	17.4
<i>Staff Secure Total</i>	<i>27</i>	<i>13.9</i>	<i>14.5</i>	<i>53.6%</i>	<i>32</i>	<i>159</i>	<i>14.7</i>
TOTAL	479	349.5	348.5	72.8%	717	3,568	15.2

**Detention
YTD ADP vs. Capacity**

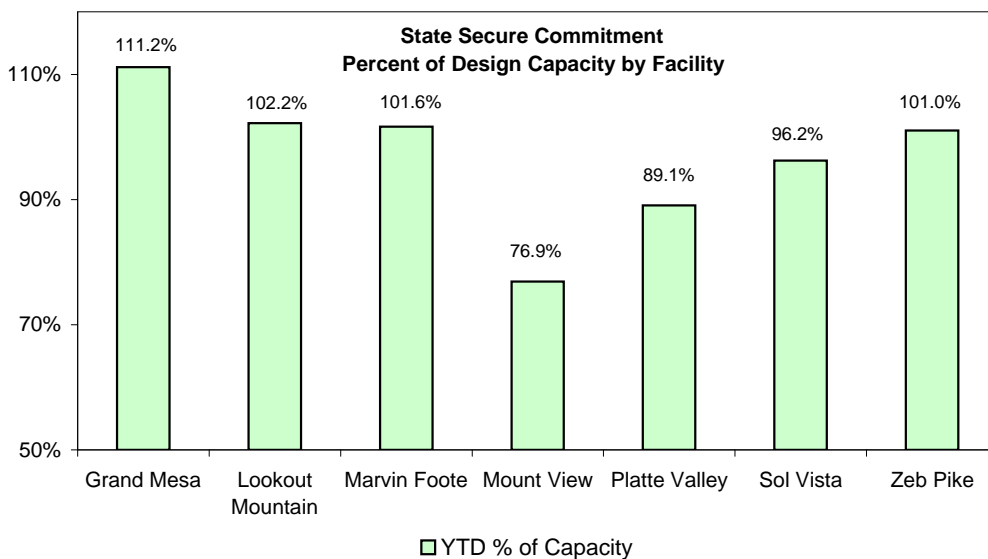


November 2010 DYC Population Report

III. Commitment Services

A. State and Contract Secure ADP by Facility

Facility	Capacity	Budgeted Capacity at 110%	ADP		YTD % of Design Capacity	YTD % of Budgeted Capacity
			November 2010	YTD		
State Secure						
Adams	0	0	0.1	0.2	N/A	N/A
Gilliam	0	0	0.8	0.7	N/A	N/A
Grand Mesa	40	44	44.5	44.0	111.2%	100.0%
Lookout	152	161	155.3	152.6	102.2%	94.8%
Marvin Foote	20	24	20.3	16.7	101.6%	69.5%
Mount View	66	76	50.7	63.0	76.9%	82.9%
Platte Valley	59	65	52.5	58.7	89.1%	90.2%
Pueblo	0	0	1.2	0.6	N/A	N/A
Sol Vista	20	20	19.2	19.8	96.2%	99.2%
Spring Creek	41	48	39.5	40.5	96.3%	84.5%
Zeb Pike	36	40	36.4	38.2	101.0%	95.4%
<i>State Total</i>	<i>434</i>	<i>478.0</i>	<i>420.5</i>	<i>435.0</i>	<i>96.9%</i>	<i>91.0%</i>
Contract Secure/Staff Supervised						
Alternative Homes For Youth - Greeley			6.0	7.5		
Betty K. Marler Center			41.0	40.8		
Brown Center			2.0	2.0		
Childrens Ark			3.9	5.8		
Devereux Cleo Wallace			19.2	16.2		
Gateway Residential Program			2.7	3.6		
Hilltop (Residential Youth Services)			4.4	4.5		
Jefferson Hills Aurora			43.2	42.8		
Mountain Star Center			3.0	3.7		
Ridge View			287.7	289.2		
Robert DeNier			15.1	16.2		
Southern Peaks			7.2	7.7		
Third Way Center - Lowry			6.0	7.0		
<i>Contract Secure Subtotal</i>			<i>441.3</i>	<i>446.9</i>		



November 2010

DYC Population Report

III. Commitment Services Continued

B. Community/Other Residential ADP by Facility

<u>Facility</u>	<u>November</u> <u>2010</u>	<u>YTD</u>
Community		
Ariel Clinical Services	2.1	2.8
Boulder Community Treatment Center	0.0	0.1
Crisis Connection Program	0.0	0.4
Dale House Project	12.2	11.2
Daybreak Princeton Girls Home	6.0	7.2
Denver Area Youth Services (DAYS)	1.0	0.3
Gateway Youth and Family Services	3.6	2.8
Griffith Centers (SR)	6.0	5.3
Job Corps	8.0	6.4
Kidz Ark Sterling	6.0	5.6
Kidz Ark New Raymer Ranch	1.0	0.5
Larimer Community Corrections	1.0	0.6
Longmont Community Treatment Center	0.4	0.2
Lost and Found Inc. Arvada	8.5	9.9
Mesa County Community Corrections	1.0	1.0
Mt Evans Qualifying House	10.8	10.0
Reflections For Youth Inc., Grismore	2.7	1.6
Reflections For Youth Inc., Prairie View	1.6	1.6
ROP-Canyon State Academy	1.0	1.0
Savio House	1.0	0.7
Southwest Colorado Community Corrections	0.0	0.5
Summit Treatment Service, Inc	15.3	17.0
Synergy Administration	10.3	8.7
Third Way Center	3.5	3.7
Third Way Center, Pontiac	4.3	6.9
Third Way Center, York	8.4	8.0
Third Way Center, Lincoln	9.8	7.3
Turning Point Center (Boys Residential)	18.9	19.6
Turning Point, Mathews St.	8.4	7.2
Youthtrack, San Luis Valley	4.0	2.0
Youthtrack, Work and Learn	7.8	6.9
Youth Ventures	1.5	3.5
<i>Community Subtotal</i>	<i>166.0</i>	<i>160.3</i>
<i>Private Contract Total</i>	<i>607.3</i>	<i>607.2</i>
Other Residential		
Job Corps Parole Program (Federally funded)	1.0	2.9
Shelter Care (short term)	1.4	1.8
Hospital	0.0	0.0
Immigration Detention Facility	1.9	2.5
Residential MH Program	5.8	4.8
Residential Drug/Alcohol Program	0.5	0.4
Residential Work Program	1.0	1.0
CMHI-Ft.Logan	0.4	0.2
CMHI-Pueblo	1.0	0.2
Other Mental Health Facility	1.1	1.1
<i>Other Residential Total*</i>	<i>16.7</i>	<i>17.9</i>
RESIDENTIAL TOTAL	1,044.5	1,060.1

*Other Residential Total may not accurately sum due to Trails-related issues

November 2010 DYC Population Report

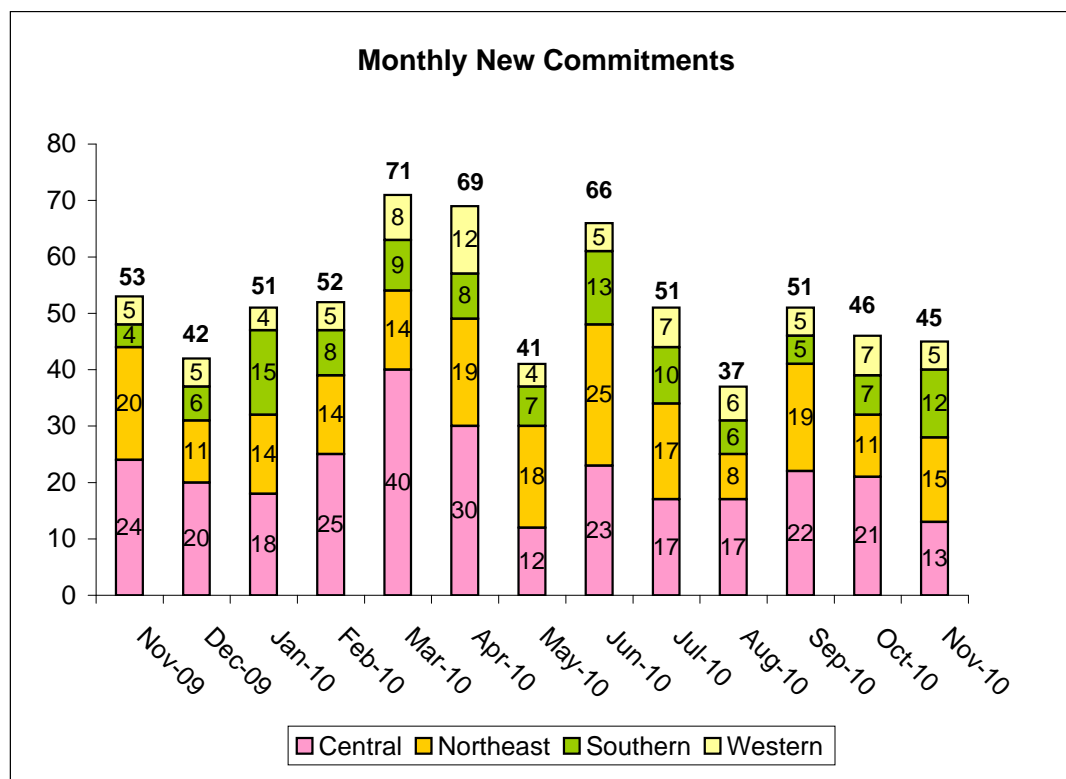
IV. Commitment ADP and New Commitments by Region

Commitment ADP by Region

Region	November	% Change	YTD
	2010	from prev. mo.	
Central Region	468.9	-0.1%	467.0
Northeast Region	271.4	-2.3%	282.5
Southern Region	196.4	-0.6%	204.4
Western Region	107.8	3.8%	106.1
Commitment ADP Total	1,044.5	-0.4%	1,060.1

New Commitments by Region

Region	November	YTD	% Change	November	Last YTD
	2010		from last YTD	2009	
Central Region	13	92	-33.8%	24	139
Northeast Region	15	72	-22.6%	20	93
Southern Region	12	42	-26.3%	4	57
Western Region	5	32	10.3%	5	29
New Commitment Total	45	238	-25.2%	53	318



November 2010 DYC Population Report

V. Parole Services

Parole ADP by Region

	<u>November 2010</u>	<u>YTD</u>	<u>Last YTD</u>	<u>% Change from last YTD</u>
Central Region	185.59	196.98	168.81	16.7%
Northeast Region	110.16	117.19	121.64	-3.7%
Southern Region	85.12	81.44	84.40	-3.5%
Western Region	40.30	46.42	42.69	8.7%
Parole Total	421.2	442.0	417.5	5.9%

Parole Intakes

Parole Discharges

Parole LOS

	<u>November 2010</u>	<u>YTD</u>	<u>November 2010</u>	<u>YTD</u>	<u>YTD</u>
Central Region	27	142	29	144	7.1
Northeast Region	17	85	14	92	6.3
Southern Region	7	58	10	43	6.9
Western Region	4	28	3	31	7.3
Parole Total	55	313	56	310	6.8

Monthly Parole ADP

