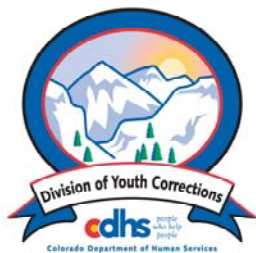


AUGUST 2010 MONTHLY POPULATION REPORT FY 2010 - 2011

Prepared by the Division of Youth Corrections Research and Evaluation Unit September 23, 2010



Colorado Department of Human Services
Division of Youth Corrections

Working with Colorado Communities to Achieve Justice

August 2010

DYC Population Report

I.	Summary Population Data	1
II.	Detention ADP by Facility	2
III.	Commitment Services	
	A. State and Contract Secure ADP by Facility	3
	B. Community/Other Residential ADP by Facility	4
IV.	ADP and New Commitments by Region	5
V.	Parole Services	6

August 2010 DYC Population Report

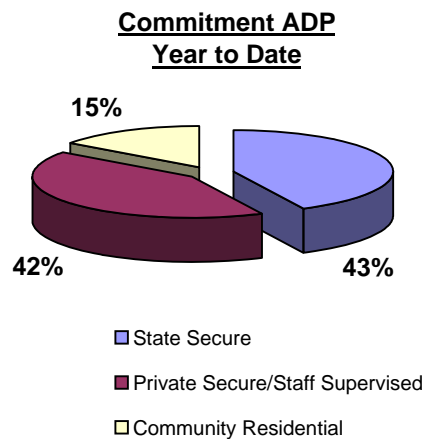
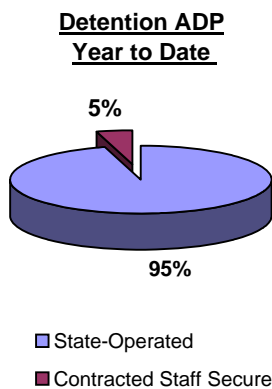
I. Summary Population Data*

DETAINED YOUTH	Average Daily Population (ADP)			Length of Stay (LOS)
	August 2010	% Change from prev. mo.	YTD	YTD
State-Operated	332.4	2.4%	329.0	15.4 days
Contracted Staff Secure	12.2	-37.9%	15.7	17.2 days
Total Detained	344.5	0.1%	344.6	15.5 days

COMMITTED YOUTH	Average Daily Population (ADP)			Length of Service (LOS)
	August 2010		YTD	YTD
State Secure	439.4	-7.2%	456.2	
Private Secure/Staff Supervised	448.7	-0.9%	450.8	
Community Residential	161.8	0.9%	160.7	
Other Residential	17.2	-11.1%	17.5	
Total Committed Residential	1,067.1	-3.5%	1,085.1	17.7 months
<i>Committed Residential w/o Boulder</i>	<i>1,058.9</i>	<i>-3.7%</i>	<i>1,077.8</i>	

PAROLED YOUTH	Average Daily Population (ADP)			Length of Service (LOS)
	August 2010		YTD	YTD
Total Paroled	451.0	6.2%	439.3	7.0 months

TOTAL STATEWIDE ADP	August 2010		YTD	
	1,862.6	-0.6%	1,869.1	



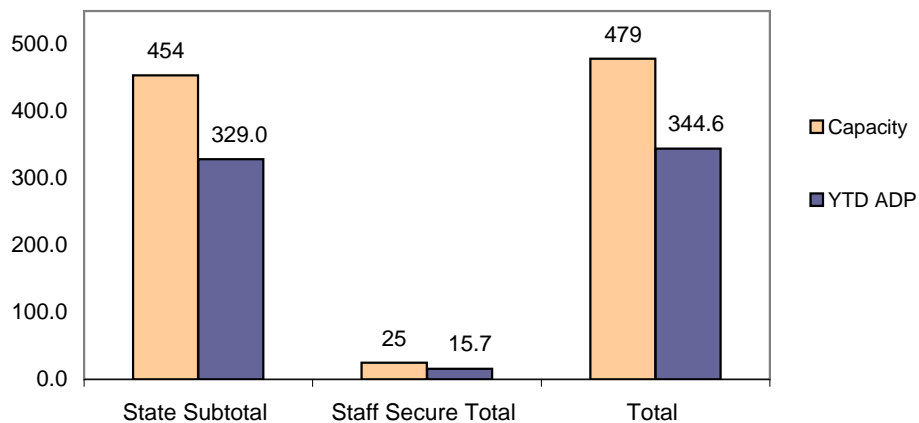
*Due to rounding, totals shown may not be an exact sum of the subtotals

August 2010 DYC Population Report

II. Detention ADP by Facility

Facility	Average Daily Population			New Admissions		YTD LOS in Days	
	Operating Capacity	August 2010	YTD	YTD % of Capacity	August 2010	YTD	LOS
<i>State Operated Detention</i>							
Adams	29	22.3	22.4	77.4%	66	123	10.6
Gilliam	73	65.5	64.4	88.3%	75	175	21.9
Grand Mesa	31	19.5	20.2	65.3%	21	59	17.0
Marvin Foote	92	68.9	66.4	72.1%	112	222	16.8
Mount View	60	38.0	34.1	56.9%	83	157	13.9
Platte Valley	69	59.9	61.2	88.6%	140	289	12.2
Pueblo	42	20.4	24.3	57.9%	57	115	14.8
Spring Creek	58	37.9	35.9	61.9%	90	159	16.9
<i>State Subtotal</i>	<i>454</i>	<i>332.4</i>	<i>329.0</i>	<i>72.5%</i>	<i>644</i>	<i>1,299</i>	<i>15.4</i>
<i>Staff Secure Detention</i>							
Brown Center	2	0.4	1.0	49.9%	1	2	19.1
Midway (Remington)	8	5.6	6.2	77.5%	11	26	14.3
Robert DeNier	9	4.2	5.6	62.7%	12	25	16.5
Youthtrack San Luis Valley	6	2.0	2.8	47.1%	4	10	25.6
<i>Staff Secure Total</i>	<i>25</i>	<i>12.2</i>	<i>15.7</i>	<i>62.7%</i>	<i>28</i>	<i>63</i>	<i>17.2</i>
TOTAL	479	344.5	344.6	71.9%	672	1,362	15.5

**Detention
YTD ADP vs. Capacity**



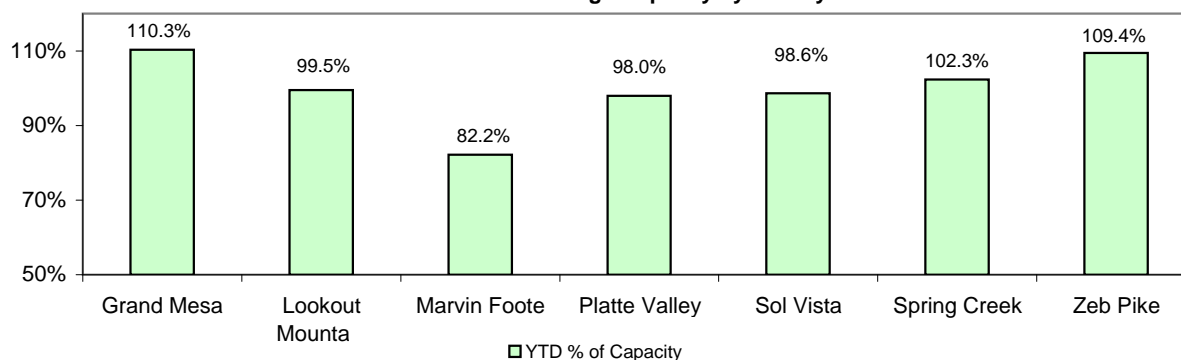
August 2010 DYC Population Report

III. Commitment Services

A. State and Contract Secure ADP by Facility

Facility	FY 2009-10 Capacity Jul 01 to Sep 30	Monthly Budgeted Capacity at 120%	YTD Budgeted Capacity at 120%	ADP		YTD % of Design Capacity	YTD % of Budgeted Capacity
				August 2010	YTD		
State Secure							
Adams	0	0	0	0.3	0.2	N/A	N/A
Gilliam	0	0	0	0.7	0.7	N/A	N/A
Grand Mesa	40	48	48	44.1	44.1	110.3%	91.5%
Lookout	152	178	176	151.2	152.0	99.5%	86.2%
Marvin Foote	20	26	25	16.4	17.4	82.2%	68.6%
Mount View	66	80	79	67.7	72.0	102.5%	91.4%
Platte Valley	59	72	71	57.8	67.2	98.0%	94.3%
Pueblo	0	0	0	0.0	0.5	N/A	N/A
Sol Vista	20	20	20	19.7	20.0	98.6%	100.2%
Spring Creek	41	53	52	42.0	43.6	102.3%	84.5%
Zeb Pike	36	44	43	39.4	38.4	109.4%	90.5%
<i>State Total</i>	<i>434</i>	<i>521.4</i>	<i>514.0</i>	<i>439.4</i>	<i>456.2</i>	<i>101.2%</i>	<i>87.5%</i>
Contract Secure/Staff Supervised							
Alternative Homes For Youth - Greeley				8.0	8.4		
Betty K. Marler Center				40.6	40.7		
Brown Center				1.6	2.7		
Childrens Ark				6.8	6.9		
Devereux Cleo Wallace				14.1	14.9		
Gateway Residential Program				3.7	4.5		
Hilltop (Residential Youth Services)				4.9	5.2		
Jefferson Hills				1.0	0.6		
Jefferson Hills Aurora				39.8	40.6		
Mountain Star Center				4.0	4.0		
Ridge View				291.0	289.0		
Robert DeNier				16.0	16.8		
Southern Peaks				9.0	8.6		
Third Way Center - Lowry				8.1	7.9		
<i>Contract Secure Subtotal</i>				<i>448.7</i>	<i>450.8</i>		

**State Secure Commitment
Percent of Design Capacity by Facility**



August 2010

DYC Population Report

III. Commitment Services Continued

B. Community/Other Residential ADP by Facility

<u>Facility</u>	<u>August</u> <u>2010</u>	<u>YTD</u>
Community		
Ariel Clinical Services	2.0	3.0
Boulder Community Treatment Center	0.0	0.1
Crisis Connection Program	1.0	1.0
Dale House Project	10.2	10.7
Daybreak Princeton Girls Home	8.7	8.0
Denver Area Youth Services (DAYS)	0.0	0.1
Gateway Youth and Family Services	2.0	1.7
Griffith Centers (SR)	5.5	4.8
Job Corps	7.3	5.8
Kidz Ark Sterling	5.8	5.6
Larimer Community Corrections	0.1	0.1
Lost and Found Inc. Arvada	10.9	11.4
Mesa County Community Corrections	2.0	2.1
Mt Evans Qualifying House	9.1	9.7
Reflections For Youth Inc., Grismore	1.0	0.8
Reflections For Youth Inc., Prairie View	1.6	1.1
ROP-Canyon State Academy	1.0	1.0
Savio House	0.4	0.2
Southwest Colorado Community Corrections	0.9	0.9
Summit Treatment Service, Inc	19.0	17.9
Synergy Administration	6.8	6.8
Third Way Center	4.0	3.4
Third Way Center, Pontiac	8.7	8.9
Third Way Center, York	7.9	8.4
Third Way Center, Lincoln	6.7	6.5
Turning Point Center (Boys Residential)	20.3	21.0
Turning Point, Mathews St.	6.0	5.5
Youthtrack, San Luis Valley	0.4	0.7
Youthtrack, Work and Learn	7.6	8.3
Youth Ventures	5.0	5.2
<i>Community Subtotal</i>	<i>161.8</i>	<i>160.7</i>
<i>Private Contract Total</i>	<i>610.5</i>	<i>611.4</i>
Other Residential		
Job Corps Parole Program (Federally funded)	3.8	4.1
Shelter Care (short term)	1.0	1.2
Hospital	0.0	0.0
Immigration Detention Facility	3.0	2.9
Residential MH Program	4.0	3.5
Residential Drug/Alcohol Program	1.0	1.0
Residential Work Program	1.0	1.0
CMHI-Ft.Logan	0.3	0.2
Other Mental Health Facility	2.3	2.7
<i>Other Residential Total*</i>	<i>17.2</i>	<i>17.5</i>
RESIDENTIAL TOTAL	1,067.1	1,085.1

*Other Residential Total may not accurately sum due to Trails-related issues

August 2010 DYC Population Report

IV. Commitment ADP and New Commitments by Region

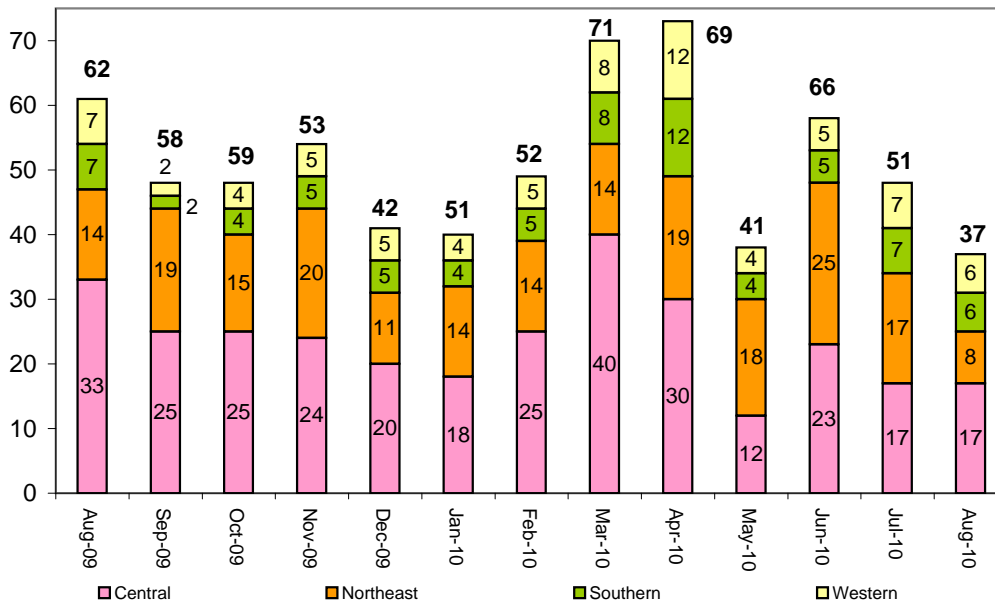
Commitment ADP by Region

Region	<u>August</u> 2010	<u>% Change</u> from prev. mo.	<u>YTD</u>
Central Region	461.3	-4.4%	471.9
Northeast Region	287.1	-2.8%	290.7
Southern Region	212.5	-2.8%	215.0
Western Region	106.2	-3.1%	107.5
Commitment ADP Total	1,067.1	-3.5%	1,085.1

New Commitments by Region

Region	<u>August</u> 2010	<u>YTD</u>	<u>% Change</u> from last YTD	<u>August</u> 2009	<u>Last YTD</u>
Central Region	17	34	-45.2%	33	62
Northeast Region	8	25	-34.2%	14	38
Southern Region	6	16	-30.4%	8	23
Western Region	6	13	-7.1%	7	14
New Commitment Total	37	88	-35.8%	62	137

Monthly New Commitments



August 2010 DYC Population Report

V. Parole Services

Parole ADP by Region

	<u>August 2010</u>	<u>YTD</u>	<u>Last YTD</u>	<u>% Change from last YTD</u>
Central Region	206.8	200.3	157.4	31.4%
Northeast Region	119.1	117.4	125.0	-4.7%
Southern Region	75.1	73.3	77.8	-3.5%
Western Region	50.0	48.4	40.8	22.5%
Parole Total	451.0	439.3	400.9	9.6%

Parole Intakes

Parole Discharges

Parole LOS

	<u>August 2010</u>	<u>YTD</u>	<u>August 2010</u>	<u>YTD</u>	<u>YTD</u>
Central Region	41	74	26	58	7.1
Northeast Region	11	28	6	28	5.9
Southern Region	12	25	7	17	6.8
Western Region	11	21	7	14	9.0
Parole Total	75	148	46	117	7.0

Monthly Parole ADP

