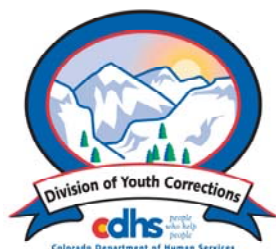


JULY 2010 MONTHLY POPULATION REPORT

Prepared by the Division of Youth Corrections Research and Evaluation Unit August 27, 2010



Colorado Department of Human Services
Division of Youth Corrections

Working with Colorado Communities to Achieve Justice

July 2010

DYC Population Report

I.	Summary Population Data	1
II.	Detention ADP by Facility	2
III.	Commitment Services	
	A. State and Contract Secure ADP by Facility	3
	B. Community/Other Residential ADP by Facility	4
IV.	ADP and New Commitments by Region	5
V.	Parole Services	6

July 2010 DYC Population Report

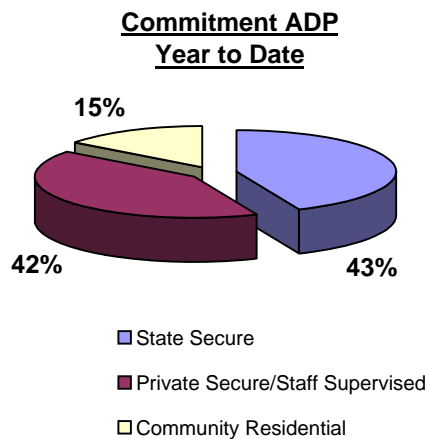
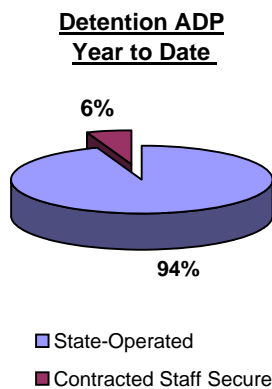
I. Summary Population Data*

DETAINED YOUTH	Average Daily Population (ADP)			Length of Stay (LOS)
	July 2010	% Change from prev. mo.	YTD	YTD
State-Operated	324.7	-9.2%	324.7	15.2 days
Contracted Staff Secure	19.6	0.0%	19.6	13.9 days
Total Detained	344.3	-8.7%	344.3	15.2 days

COMMITTED YOUTH	Average Daily Population (ADP)			Length of Service (LOS)
	July 2010		YTD	YTD
State Secure	473.3	0.5%	473.3	
Private Secure/Staff Supervised	452.9	-0.1%	452.9	
Community Residential	160.3	-4.9%	160.3	
Other Residential	19.4	-2.0%	19.4	
Total Committed Residential	1,105.8	-0.6%	1,105.8	17.6 months
<i>Committed Residential w/o Boulder</i>	<i>1,099.5</i>	<i>-0.6%</i>	<i>1,099.5</i>	

PAROLED YOUTH	Average Daily Population (ADP)			Length of Service (LOS)
	July 2010		YTD	YTD
Total Paroled	424.7	-0.9%	424.7	6.7 months

TOTAL STATEWIDE ADP	July 2010	% Change	YTD
	1,874.8	-2.3%	1,874.8



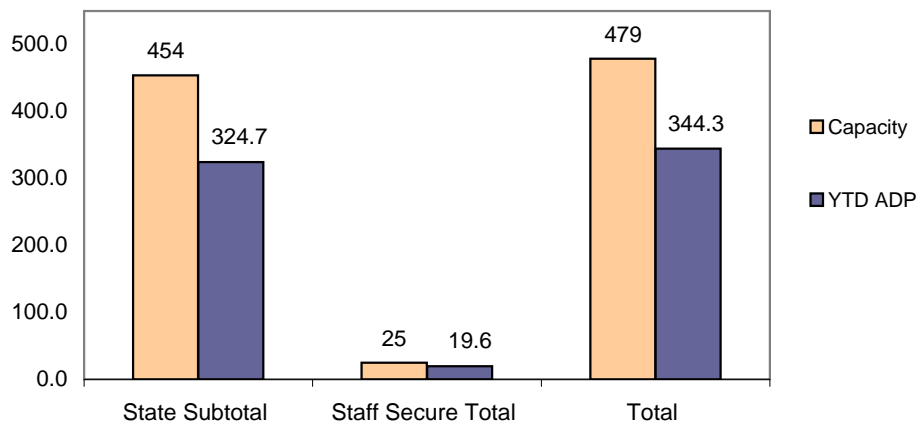
*Due to rounding, totals shown may not be an exact sum of the subtotals

July 2010 DYC Population Report

II. Detention ADP by Facility

Facility	Operating Capacity	Average Daily Population		YTD % of Capacity	New Admissions		YTD LOS in Days
		July 2010	YTD		July 2010	YTD	
<i>State Operated Detention</i>							
Adams	29	22.6	22.6	77.8%	57	57	11.6
Gilliam	73	63.4	63.4	86.8%	100	100	20.1
Grand Mesa	31	21.0	21.0	67.7%	37	37	13.3
Marvin Foote	92	63.9	63.9	69.4%	110	110	18.0
Mount View	60	28.6	28.6	47.6%	74	74	14.8
Platte Valley	69	63.3	63.3	91.7%	151	151	12.0
Pueblo	42	28.1	28.1	67.0%	58	58	13.2
Spring Creek	58	33.9	33.9	58.5%	69	69	17.4
<i>State Subtotal</i>	<i>454</i>	<i>324.7</i>	<i>324.7</i>	<i>71.5%</i>	<i>656</i>	<i>656</i>	<i>15.2</i>
<i>Staff Secure Detention</i>							
Brown Center	2	1.6	1.6	79.8%	1	1	12.9
Midway (Remington)	8	6.8	6.8	85.4%	15	15	14.5
Robert DeNier	9	7.5	7.5	83.3%	15	15	14.2
Youthtrack San Luis Valley	6	3.7	3.7	61.2%	6	6	11.3
<i>Staff Secure Total</i>	<i>25</i>	<i>19.6</i>	<i>19.6</i>	<i>78.4%</i>	<i>37</i>	<i>37</i>	<i>13.9</i>
TOTAL	479	344.3	344.3	71.9%	693	693	15.2

**Detention
YTD ADP vs. Capacity**



July 2010 DYC Population Report

III. Commitment Services

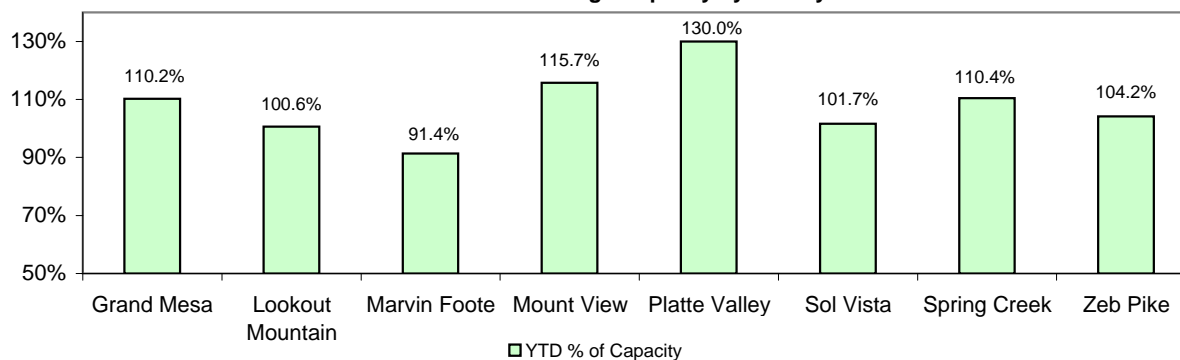
A. State and Contract Secure ADP by Facility

Facility	FY 2009-10 Capacity Jul 01 to Sep 30	Monthly Budgeted Capacity at 120%	YTD Budgeted Capacity at 120%	ADP		YTD % of Design Capacity	YTD % of Budgeted Capacity
				July 2010	YTD		
State Secure							
Adams	0	0	0	0.0	0.0	N/A	N/A
Gilliam	0	0	0	0.7	0.7	N/A	N/A
Grand Mesa	40	48	48	44.1	44.1	110.2%	91.5%
Lookout	152	178	176	152.9	152.9	100.6%	86.7%
Marvin Foote	20	26	25	18.3	18.3	91.4%	72.2%
Mount View	66	80	79	76.4	76.4	115.7%	96.9%
Platte Valley	59	72	71	76.7	76.7	130.0%	107.5%
Pueblo	0	0	0	1.1	1.1	N/A	N/A
Sol Vista	20	20	20	20.3	20.3	101.7%	101.7%
Spring Creek	41	53	52	45.3	45.3	110.4%	87.7%
Zeb Pike	36	44	43	37.5	37.5	104.2%	88.2%
<i>State Total</i>	<i>434</i>	<i>521.4</i>	<i>514.0</i>	<i>473.3</i>	<i>473.3</i>	<i>109.0%</i>	<i>90.8%</i>

Contract Secure/Staff Supervised

Alternative Homes For Youth - Greeley	8.7	8.7
Betty K. Marler Center	40.8	40.8
Brown Center	3.9	3.9
Childrens Ark	6.9	6.9
Devereux Cleo Wallace	15.7	15.7
Gateway Residential Program	5.4	5.4
Hilltop (Residential Youth Services)	5.4	5.4
Jefferson Hills	0.2	0.2
Jefferson Hills Aurora	41.4	41.4
Mountain Star Center	4.0	4.0
Ridge View	287.0	287.0
Robert DeNier	17.6	17.6
Southern Peaks	8.2	8.2
Third Way Center - Lowry	7.7	7.7
<i>Contract Secure Subtotal</i>	<i>452.9</i>	<i>452.9</i>

**State Secure Commitment
Percent of Design Capacity by Facility**



July 2010

DYC Population Report

III. Commitment Services Continued

B. Community/Other Residential ADP by Facility

<u>Facility</u>	<u>July 2010</u>	<u>YTD</u>
Community		
Ariel Clinical Services	4.0	4.0
Boulder Community Treatment Center	0.3	0.3
Crisis Connection Program	1.0	1.0
Dale House Project	11.2	11.2
Daybreak Princeton Girls Home	7.3	7.3
Denver Area Youth Services (DAYS)	0.2	0.2
Gateway Youth and Family Services	1.4	1.4
Griffith Centers (SR)	4.1	4.1
Job Corps	4.3	4.3
Kidz Ark Sterling	6.0	6.0
Lost and Found Inc., Arvada	11.9	11.9
Mesa County Community Corrections	2.1	2.1
Mt Evans Qualifying House	10.4	10.4
Reflections For Youth Inc., Grismore	0.6	0.6
Reflections For Youth Inc., Prairie View	0.5	0.5
ROP-Canyon State Academy	1.0	1.0
Southwest Colorado Community Corrections	0.9	0.9
Summit Treatment Service, Inc	16.8	16.8
Synergy Administration	6.7	6.7
Third Way Center	2.8	2.8
Third Way Center, Pontiac	9.0	9.0
Third Way Center, York	9.0	9.0
Third Way Center, Lincoln	6.3	6.3
Turning Point Center (Boys Residential)	21.8	21.8
Turning Point, Mathews St.	5.1	5.1
Youthtrack, San Luis Valley	1.0	1.0
Youthtrack, Work and Learn	9.1	9.1
Youth Ventures	5.4	5.4
<i>Community Subtotal</i>	<i>160.3</i>	<i>160.3</i>
<i>Private Contract Total</i>	<i>613.2</i>	<i>613.2</i>
Other Residential		
Job Corps Parole Program (Federally funded)	4.4	4.4
Shelter Care (short term)	1.3	1.3
Hospital	0.1	0.1
Immigration Detention Facility	2.9	2.9
Residential MH Program	3.0	3.0
Residential Drug/Alcohol Program	1.0	1.0
Residential Work Program	2.0	2.0
CMHI-Ft.Logan	0.0	0.0
CMHI-Pueblo	-	-
Other Mental Health Facility	3.1	3.1
<i>Other Residential Total*</i>	<i>19.4</i>	<i>19.4</i>
RESIDENTIAL TOTAL	1,105.8	1,105.8

*Other Residential Total may not accurately sum due to Trails-related issues

July 2010 DYC Population Report

IV. Commitment ADP and New Commitments by Region

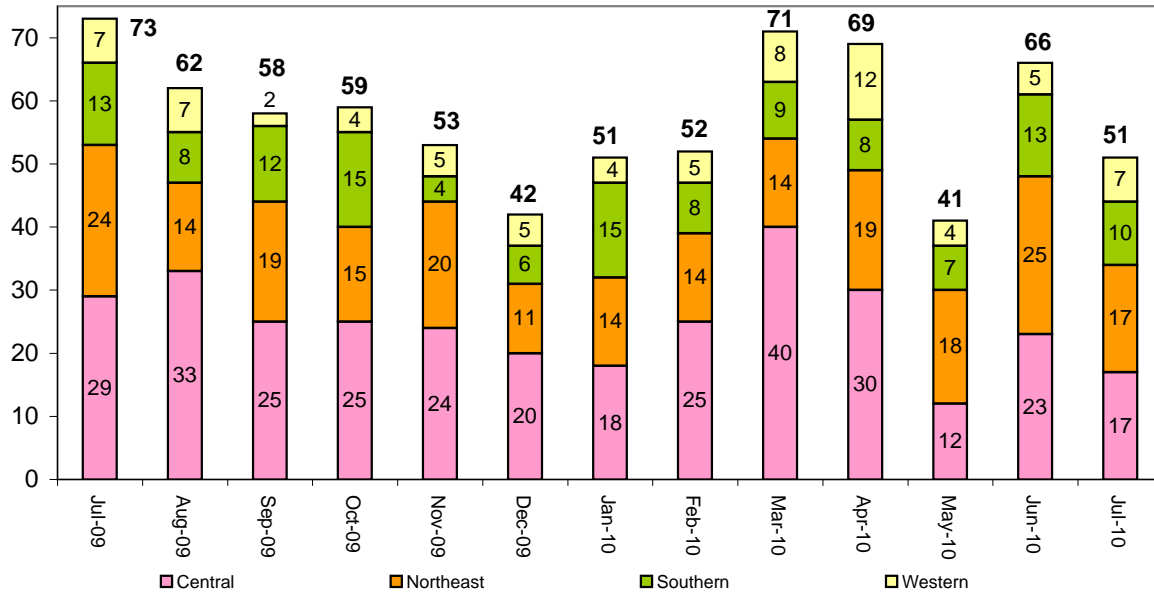
Commitment ADP by Region

Region	July 2010	% Change from prev. mo.	YTD
Central Region	482.3	-2.5%	482.3
Northeast Region	295.4	3.0%	295.4
Southern Region	218.5	1.2%	218.5
Western Region	109.6	-4.8%	109.6
Commitment ADP Total	1,105.8	-0.6%	1,105.8

New Commitments by Region

	July 2010	YTD	% Change from last YTD	July 2009	Last YTD
Central Region	17	17	-41.4%	29	29
Northeast Region	17	17	-29.2%	24	24
Southern Region	10	10	-23.1%	13	13
Western Region	7	7	0.0%	7	7
New Commitment Total	51	51	-30.1%	73	73

Monthly New Commitments



July 2010 DYC Population Report

V. Parole Services

Parole ADP by Region

	<u>July 2010</u>	<u>YTD</u>	<u>Last YTD</u>	<u>% Change from last YTD</u>
Central Region	190.8	190.8	157.2	21.4%
Northeast Region	116.4	116.4	121.3	-4.0%
Southern Region	72.2	72.2	80.0	-9.7%
Western Region	45.3	45.3	39.4	15.1%
Parole Total	424.7	424.7	397.8	6.8%

Parole Intakes

Parole Discharges

Parole LOS

	<u>July 2010</u>	<u>YTD</u>	<u>July 2010</u>	<u>YTD</u>	<u>YTD</u>
Central Region	33	33	32	32	7.3
Northeast Region	17	17	20	20	5.4
Southern Region	13	13	10	10	6.0
Western Region	8	8	6	6	9.5
Parole Total	71	71	68	68	6.7

Monthly Parole ADP

