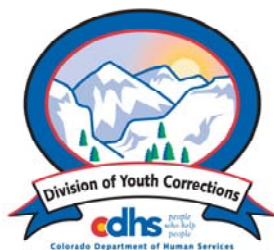


JUNE 2010

MONTHLY POPULATION REPORT

Prepared by the Division of Youth Corrections Research and Evaluation Unit July 21, 2010



Colorado Department of Human Services
Division of Youth Corrections

Working with Colorado Communities to Achieve Justice

June 2010

DYC Population Report

I.	Summary Population Data	1
II.	Detention ADP by Facility	2
III.	Commitment Services	
	A. State and Contract Secure ADP by Facility	3
	B. Community/Other Residential ADP by Facility	4
IV.	ADP and New Commitments by Region	5
V.	Parole Services	6

June 2010 DYC Population Report

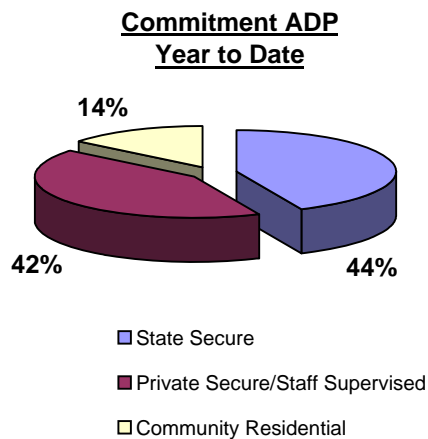
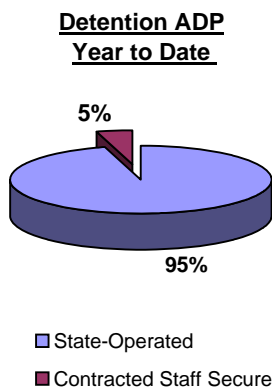
I. Summary Population Data*

DETAINED YOUTH	Average Daily Population (ADP)			Length of Stay (LOS)
	June 2010	% Change from prev. mo.	YTD	YTD
State-Operated	357.5	-5.6%	346.9	14.2 days
Contracted Staff Secure	19.6	0.2%	16.6	13.1 days
Total Detained	377.1	-5.3%	363.4	14.2 days

COMMITTED YOUTH	Average Daily Population (ADP)			Length of Service (LOS)
	June 2010		YTD	YTD
State Secure	470.8	-2.2%	499.1	
Private Secure/Staff Supervised	453.4	1.8%	486.8	
Community Residential	168.5	-0.6%	164.2	
Other Residential	19.8	-20.0%	20.4	
Total Committed Residential	1,112.5	-0.7%	1,170.6	18.9 months
<i>Committed Residential w/o Boulder</i>	<i>1,105.8</i>	<i>-0.9%</i>	<i>1,167.0</i>	

PAROLED YOUTH	Average Daily Population (ADP)			Length of Service (LOS)
	June 2010		YTD	YTD
Total Paroled	428.6	-4.0%	443.2	6.8 months

TOTAL STATEWIDE ADP	June 2010	% Change	YTD
	1,918.3	-2.4%	1,977.2



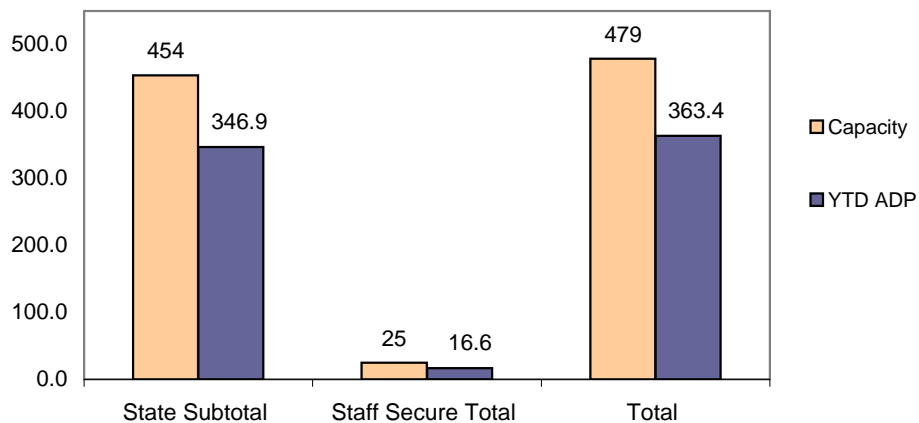
*Due to rounding, totals shown may not be an exact sum of the subtotals

June 2010 DYC Population Report

II. Detention ADP by Facility

Facility	Operating Capacity	Average Daily Population			New Admissions		YTD LOS in Days
		June 2010	YTD	YTD % of Capacity	June 2010	YTD	LOS
<i>State Operated Detention</i>							
Adams	29	23.3	22.3	77.0%	49	672	12.0
Gilliam	73	61.1	58.5	80.1%	73	1,146	18.5
Grand Mesa	31	17.5	20.4	65.8%	41	440	16.1
Marvin Foote	92	79.4	75.0	81.5%	110	1,495	17.3
Mount View	60	42.1	37.7	62.8%	78	1,001	13.5
Platte Valley	69	59.9	60.2	87.2%	154	1,774	12.2
Pueblo	42	24.9	27.7	65.8%	59	847	11.8
Spring Creek	58	49.4	45.2	77.9%	91	1,280	12.3
<i>State Subtotal</i>	<i>454</i>	<i>357.5</i>	<i>346.9</i>	<i>76.4%</i>	<i>655</i>	<i>8,655</i>	<i>14.2</i>
<i>Staff Secure Detention</i>							
Brown Center	2	0.8	1.1	55.0%	4	21	20.2
Midway (Remington)	8	6.7	5.6	70.0%	14	180	10.9
Robert DeNier	9	7.8	6.4	70.8%	13	159	14.6
Youthtrack San Luis Valley	6	4.3	3.5	58.1%	4	93	13.1
<i>Staff Secure Total</i>	<i>25</i>	<i>19.6</i>	<i>16.6</i>	<i>66.2%</i>	<i>35</i>	<i>453</i>	<i>13.1</i>
TOTAL	479	377.1	363.4	75.9%	690	9,108	14.2

**Detention
YTD ADP vs. Capacity**



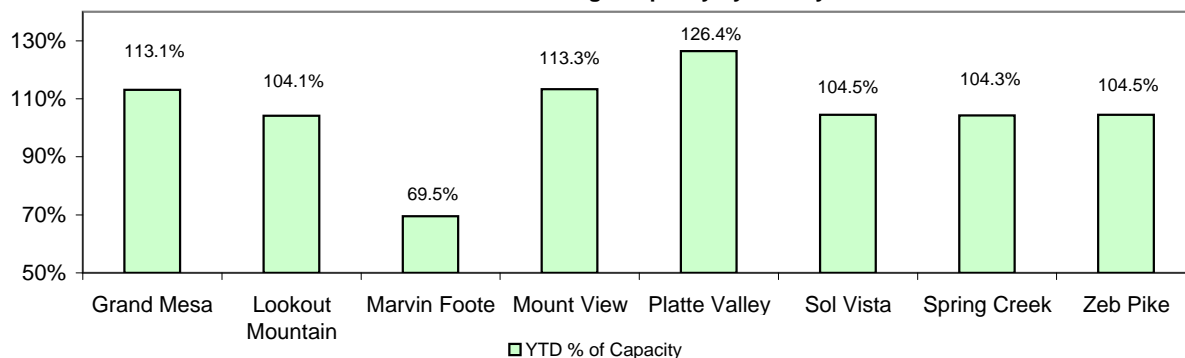
June 2010 DYC Population Report

III. Commitment Services

A. State and Contract Secure ADP by Facility

Facility	FY 2009-10 Capacity Jul 01 to Sep 30	Monthly Budgeted Capacity at 120%	YTD Budgeted Capacity at 120%	ADP		YTD % of Design Capacity	YTD % of Budgeted Capacity
				June 2010	YTD		
State Secure							
Adams	0	0	0	1.8	0.3	N/A	N/A
Gilliam	0	0	0	0.8	0.8	N/A	N/A
Grand Mesa	40	48	48	45.2	46.5	113.1%	96.4%
Lookout	152	178	176	158.3	171.3	104.1%	97.2%
Marvin Foote	20	26	25	13.9	19.6	69.5%	77.5%
Mount View	66	80	79	74.8	80.0	113.3%	101.5%
Platte Valley	59	72	71	74.6	70.1	126.4%	98.4%
Pueblo	0	0	0	0.2	0.2	N/A	N/A
Sol Vista	20	20	20	20.9	20.0	104.5%	99.9%
Spring Creek	41	53	52	42.8	49.0	104.3%	94.9%
Zeb Pike	36	44	43	37.6	41.3	104.5%	97.2%
<i>State Total</i>	<i>434</i>	<i>521.4</i>	<i>514.0</i>	<i>470.8</i>	<i>499.1</i>	<i>108.5%</i>	<i>95.7%</i>
Contract Secure/Staff Supervised							
Alternative Homes For Youth - Greeley				5.9	7.4		
Betty K. Marler Center				41.0	40.4		
Brown Center				2.4	2.3		
Childrens Ark				7.0	3.9		
Devereux Cleo Wallace				12.1	13.9		
Gateway Residential Program				4.8	2.9		
Griffith Centers for Children				0.0	0.1		
Hand Up Homes for Youth - West				0.0	2.2		
Hilltop (Residential Youth Services)				4.9	7.1		
Jefferson Hills				0.0	9.6		
Jefferson Hills Aurora				40.4	36.5		
Mountain Star Center				4.0	2.6		
Ridge View				297.3	324.0		
Robert DeNier				17.1	16.6		
Southern Peaks				7.7	9.7		
Third Way Center - Lowry				9.0	7.2		
Youth Villages				0.0	0.7		
<i>Contract Secure Subtotal</i>				<i>453.4</i>	<i>486.8</i>		

**State Secure Commitment
Percent of Design Capacity by Facility**



June 2010

DYC Population Report

III. Commitment Services Continued

B. Community/Other Residential ADP by Facility

<u>Facility</u>	<u>June 2010</u>	<u>YTD</u>
Community		
Ariel Clinical Services	4.6	2.7
Boulder Community Treatment Center	1.0	0.6
Community Corrections and Work Release	0.0	0.2
Crisis Connection Program	2.0	5.7
Dale House Project	10.3	11.4
Daybreak & Daybreak Princeton	7.1	2.0
Denver Area Youth Services (DAYS)	1.0	3.3
Gateway Youth and Family Services	2.2	1.3
Griffith Centers (SR)	2.4	1.5
Job Corps	6.2	5.0
Kidz Ark Sterling	4.5	4.2
Larimer Community Corrections	0.4	1.3
Longmont Community Treatment Center	0.0	0.2
Lost and Found Inc., Arvada	13.8	11.3
Lost and Found Inc., Morrison	0.0	0.7
Mesa County Community Corrections	3.0	3.4
Mt Evans Qualifying House	10.6	11.3
Reflections For Youth Inc., Grismore	0.9	0.9
Reflections For Youth Inc., Prairie View	1.0	1.5
ROP-Canyon State Academy	1.0	1.0
Southwest Colorado Community Corrections	1.0	0.4
Summit Treatment Service, Inc	19.3	18.8
Synergy Administration	7.0	9.8
Third Way Center	2.0	4.6
Third Way Center, Pontiac	8.0	7.2
Third Way Center, York	8.6	7.8
Third Way Center, Lincoln	5.1	4.3
Turning Point Center (Boys Residential)	23.9	18.8
Turning Point, Mathews St.	5.1	5.9
Youthtrack, San Luis Valley	1.0	1.4
Youthtrack, Work and Learn	9.9	9.5
Youth Ventures	5.7	6.3
<i>Community Subtotal</i>	<i>168.5</i>	<i>164.2</i>
<i>Private Contract Total</i>	<i>621.9</i>	<i>651.1</i>
Other Residential		
Job Corps Parole Program (Federally funded)	5.3	5.9
Shelter Care (short term)	2.2	1.3
Hospital	0.0	0.1
Immigration Detention Facility	2.4	1.9
Residential MH Program	2.0	3.0
Residential Drug/Alcohol Program	1.0	0.4
Residential Work Program	2.0	2.0
CMHI-Ft.Logan	0.0	0.4
CMHI-Pueblo	0.6	1.7
Other Mental Health Facility	3.0	1.3
<i>Other Residential Total*</i>	<i>19.8</i>	<i>20.4</i>
RESIDENTIAL TOTAL	1,112.5	1,170.6

*Other Residential Total may not accurately sum due to Trails-related issues

June 2010 DYC Population Report

IV. Commitment ADP and New Commitments by Region

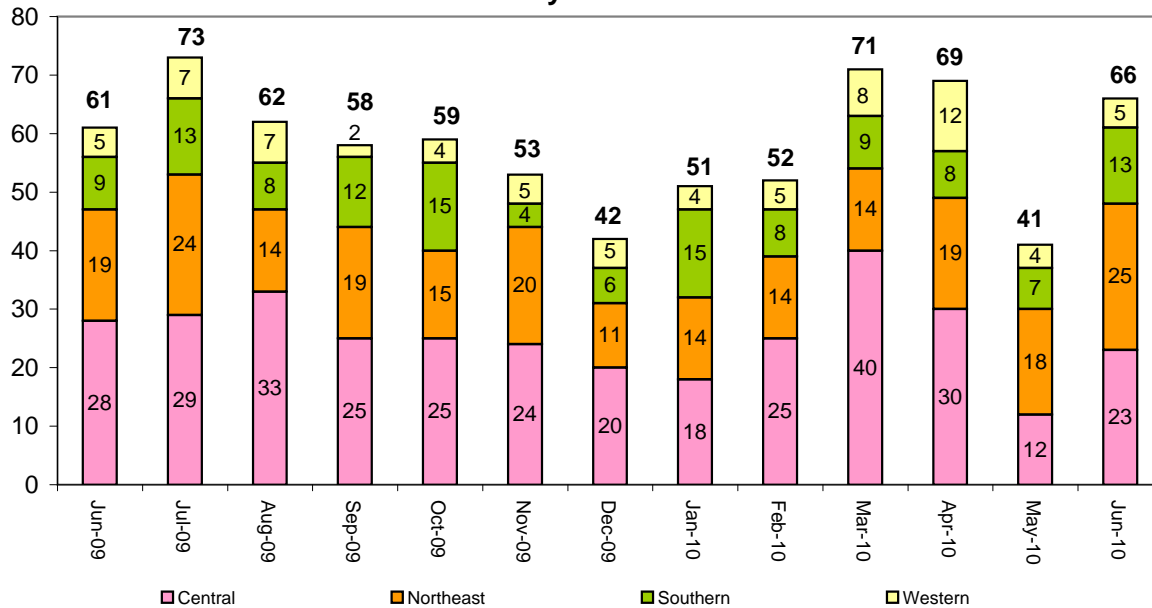
Commitment ADP by Region

Region	June 2010	% Change from prev. mo.	YTD
Central Region	494.7	-1.3%	528.3
Northeast Region	286.8	1.7%	303.5
Southern Region	216.0	-1.8%	225.6
Western Region	115.1	-2.1%	113.2
Commitment ADP Total	1,112.5	-0.7%	1,170.6

New Commitments by Region

	June 2010	YTD	% Change from last YTD	June 2009	Last YTD
Central Region	23	320	-1.5%	28	325
Northeast Region	25	212	5.0%	19	202
Southern Region	13	124	-12.1%	9	141
Western Region	5	75	-17.6%	5	91
New Commitment Total	66	731	-3.7%	61	759

Monthly New Commitments



June 2010 DYC Population Report

V. Parole Services

Parole ADP by Region				
	<u>June 2010</u>	<u>YTD</u>	<u>Last YTD</u>	<u>% Change from last YTD</u>
Central Region	190.9	189.4	174.9	8.3%
Northeast Region	123.3	123.9	129.1	-4.0%
Southern Region	73.1	84.6	88.6	-4.5%
Western Region	41.4	45.3	42.4	6.8%
Parole Total	428.6	443.2	434.9	1.9%

	<u>Parole Intakes</u>		<u>Parole Discharges</u>		<u>Parole LOS</u>
	<u>June 2010</u>	<u>YTD</u>	<u>June 2010</u>	<u>YTD</u>	<u>YTD</u>
Central Region	29	342	36	318	6.8
Northeast Region	16	230	18	214	7.1
Southern Region	13	142	8	141	6.8
Western Region	6	81	6	76	6.2
Parole Total	64	795	68	749	6.8

