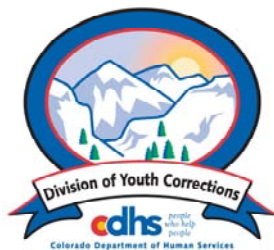


MAY 2010 MONTHLY POPULATION REPORT

Prepared by the Division of Youth Corrections Research and Evaluation Unit June 17, 2010



Colorado Department of Human Services
Division of Youth Corrections

Working with Colorado Communities to Achieve Justice

May 2010

DYC Population Report

I.	Summary Population Data	1
II.	Detention ADP by Facility	2
III.	Commitment Services	
	A. State and Contract Secure ADP by Facility	3
	B. Community/Other Residential ADP by Facility	4
IV.	ADP and New Commitments by Region	5
V.	Parole Services	6

May 2010 DYC Population Report

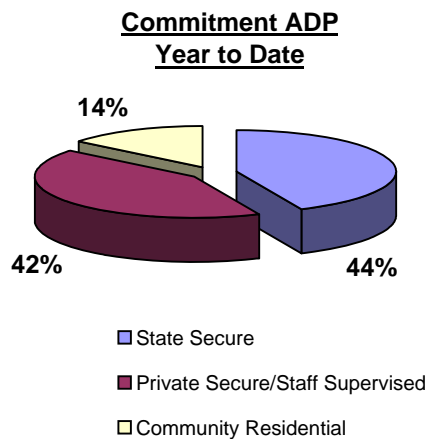
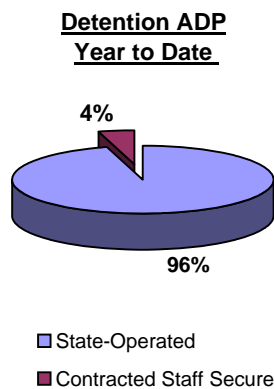
I. Summary Population Data*

DETAINED YOUTH	Average Daily Population (ADP)			Length of Stay (LOS)
	May 2010	% Change from prev. mo.	YTD	YTD
State-Operated	378.7	5.9%	346.1	14.0 days
Contracted Staff Secure	19.6	1.7%	16.2	12.5 days
Total Detained	398.2	5.7%	362.3	13.9 days

COMMITTED YOUTH	Average Daily Population (ADP)			Length of Service (LOS)
	May 2010		YTD	YTD
State Secure	481.3	-5.3%	501.7	
Private Secure/Staff Supervised	445.3	3.2%	489.9	
Community Residential	169.5	2.4%	163.9	
Other Residential	24.7	-3.5%	20.0	
Total Committed Residential	1,120.8	-0.9%	1,175.5	18.9 months
<i>Committed Residential w/o Boulder</i>	<i>1,116.0</i>	<i>-0.9%</i>	<i>1,172.2</i>	

PAROLED YOUTH	Average Daily Population (ADP)			Length of Service (LOS)
	May 2010		YTD	YTD
Total Paroled	446.2	-5.0%	445.5	6.8 months

TOTAL STATEWIDE ADP	May 2010	% Change	YTD
	1,965.3	-0.6%	1,983.4



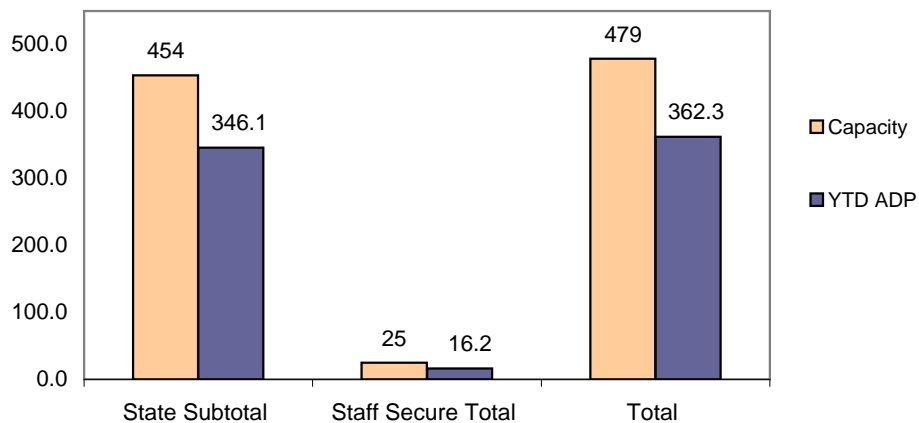
*Due to rounding, totals shown may not be an exact sum of the subtotals

May 2010 DYC Population Report

II. Detention ADP by Facility

Facility	Operating Capacity	Average Daily Population			New Admissions		YTD LOS in Days
		May 2010	YTD	YTD % of Capacity	May 2010	YTD	LOS
<i>State Operated Detention</i>							
Adams	29	26.3	22.2	76.4%	79	624	11.5
Gilliam	73	63.0	58.2	79.8%	100	1,073	18.2
Grand Mesa	31	17.2	20.7	66.7%	31	399	15.6
Marvin Foote	92	84.0	74.6	81.1%	124	1,385	17.2
Mount View	60	43.2	37.3	62.1%	88	923	13.4
Platte Valley	69	65.3	60.5	87.6%	143	1,622	12.1
Pueblo	42	28.2	27.9	66.4%	57	788	11.8
Spring Creek	58	51.6	44.8	77.2%	137	1,189	11.9
<i>State Subtotal</i>	<i>454</i>	<i>378.7</i>	<i>346.1</i>	<i>76.2%</i>	<i>759</i>	<i>8,003</i>	<i>14.0</i>
<i>Staff Secure Detention</i>							
Brown Center	2	0.6	1.1	56.4%	2	17	22.8
Midway (Remington)	8	6.4	5.5	68.3%	12	165	10.5
Robert DeNier	9	7.1	6.2	69.4%	14	146	14.1
Youthtrack San Luis Valley	6	5.4	3.4	56.9%	4	89	11.2
<i>Staff Secure Total</i>	<i>25</i>	<i>19.6</i>	<i>16.2</i>	<i>65.0%</i>	<i>32</i>	<i>417</i>	<i>12.5</i>
TOTAL	479	398.2	362.3	75.6%	791	8,420	13.9

**Detention
YTD ADP vs. Capacity**

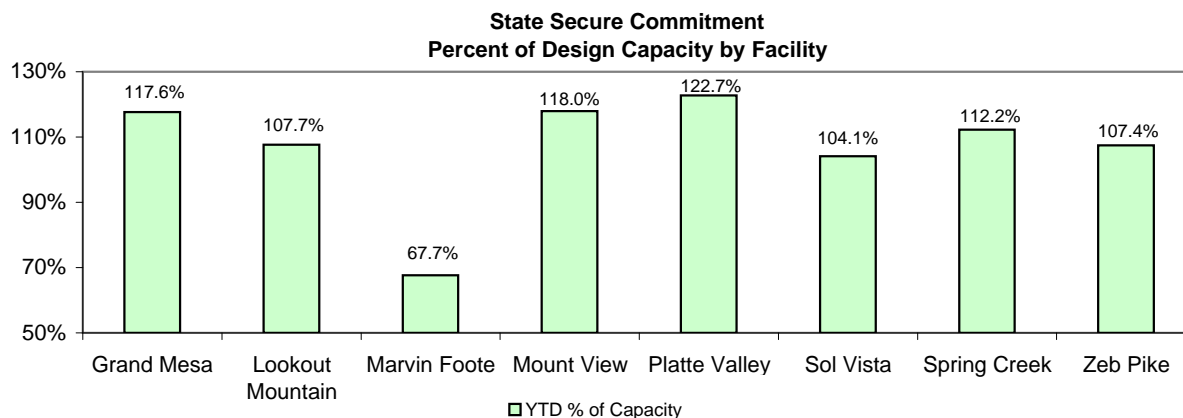


May 2010 DYC Population Report

III. Commitment Services

A. State and Contract Secure ADP by Facility

Facility	FY 2009-10 Capacity Jul 01 to Sep 30	Monthly Budgeted Capacity at 120%	YTD Budgeted Capacity at 120%	ADP		YTD % of Design Capacity	YTD % of Budgeted Capacity
				May 2010	YTD		
State Secure							
Adams	0	0	0	0.2	0.3	N/A	N/A
Gilliam	0	0	0	0.5	0.8	N/A	N/A
Grand Mesa	40	48	48	47.1	46.6	117.6%	96.7%
Lookout	152	178	176	163.7	172.5	107.7%	97.8%
Marvin Foote	20	26	25	13.5	20.1	67.7%	79.6%
Mount View	66	80	79	77.9	80.5	118.0%	102.1%
Platte Valley	59	72	71	72.4	69.7	122.7%	97.8%
Pueblo	0	0	0	0.5	0.2	N/A	N/A
Sol Vista	20	20	20	20.8	19.9	104.1%	99.5%
Spring Creek	41	53	52	46.0	49.5	112.2%	96.0%
Zeb Pike	36	44	43	38.7	41.6	107.4%	98.0%
<i>State Total</i>	<i>434</i>	<i>521.4</i>	<i>514.0</i>	<i>481.3</i>	<i>501.7</i>	<i>110.9%</i>	<i>96.2%</i>
Contract Secure/Staff Supervised							
Alternative Homes For Youth - Greeley				5.7	7.5		
Betty K. Marler Center				40.1	40.4		
Brown Center				2.0	2.3		
Childrens Ark				7.7	3.6		
Devereux Cleo Wallace				11.0	14.1		
Gateway Residential Program				3.0	2.7		
Griffith Centers for Children				0.0	0.1		
Hand Up Homes for Youth - West				0.9	2.3		
Hilltop (Residential Youth Services)				4.8	7.3		
Jefferson Hills				0.9	10.5		
Jefferson Hills Aurora				39.3	36.1		
Mountain Star Center				3.9	2.4		
Ridge View				293.1	326.3		
Robert DeNier				16.0	16.5		
Southern Peaks				5.5	9.9		
Third Way Center - Lowry				11.4	7.0		
Youth Villages				0.0	0.8		
<i>Contract Secure Subtotal</i>				<i>445.3</i>	<i>489.9</i>		



May 2010

DYC Population Report

III. Commitment Services Continued

B. Community/Other Residential ADP by Facility

<u>Facility</u>	<u>May 2010</u>	<u>YTD</u>
Community		
Ariel Clinical Services	3.4	2.5
Boulder Community Treatment Center	1.0	0.5
Community Corrections and Work Release	0.0	0.3
Crisis Connection Program	2.3	6.0
Dale House Project	11.1	11.5
Daybreak & Daybreak Princeton	6.1	1.6
Denver Area Youth Services (DAYS)	1.1	3.5
Gateway Youth and Family Services	1.1	1.2
Griffith Centers (SR)	2.0	1.5
Job Corps	5.4	4.8
Kidz Ark Sterling	4.7	4.2
Larimer Community Corrections	1.0	1.4
Longmont Community Treatment Center	0.0	0.2
Lost and Found Inc., Arvada	12.8	11.0
Lost and Found Inc., Morrison	0.0	0.8
Mesa County Community Corrections	4.2	3.5
Mt Evans Qualifying House	9.5	11.3
Reflections For Youth Inc., Grismore	0.5	0.9
Reflections For Youth Inc., Prairie View	1.1	1.6
ROP-Canyon State Academy	1.0	1.0
Southwest Colorado Community Corrections	1.0	0.3
Summit Treatment Service, Inc	19.7	18.8
Synergy Administration	8.3	10.1
Third Way Center	3.4	4.8
Third Way Center, Pontiac	5.7	7.1
Third Way Center, York	7.2	7.7
Third Way Center, Lincoln	6.0	4.3
Turning Point Center (Boys Residential)	26.9	18.4
Turning Point, Mathews St.	4.6	5.9
Youthtrack, San Luis Valley	1.0	1.4
Youthtrack, Work and Learn	10.7	9.5
Youth Ventures	6.6	6.3
<i>Community Subtotal</i>	<i>169.5</i>	<i>163.9</i>
<i>Private Contract Total</i>	<i>614.8</i>	<i>653.8</i>
Other Residential		
Job Corps Parole Program (Federally funded)	8.3	6.1
Shelter Care (short term)	3.0	1.2
Hospital	0.0	0.1
Immigration Detention Facility	2.4	1.9
Residential MH Program	2.5	3.1
Residential Drug/Alcohol Program	2.3	0.4
Residential Work Program	3.1	2.0
CMHI-Ft.Logan	0.0	0.4
CMHI-Pueblo	1.2	1.8
Other Mental Health Facility	2.0	1.1
<i>Other Residential Total*</i>	<i>24.7</i>	<i>20.0</i>
RESIDENTIAL TOTAL	1,120.8	1,175.5

*Other Residential Total may not accurately sum due to Trails-related issues

May 2010 DYC Population Report

IV. Commitment ADP and New Commitments by Region

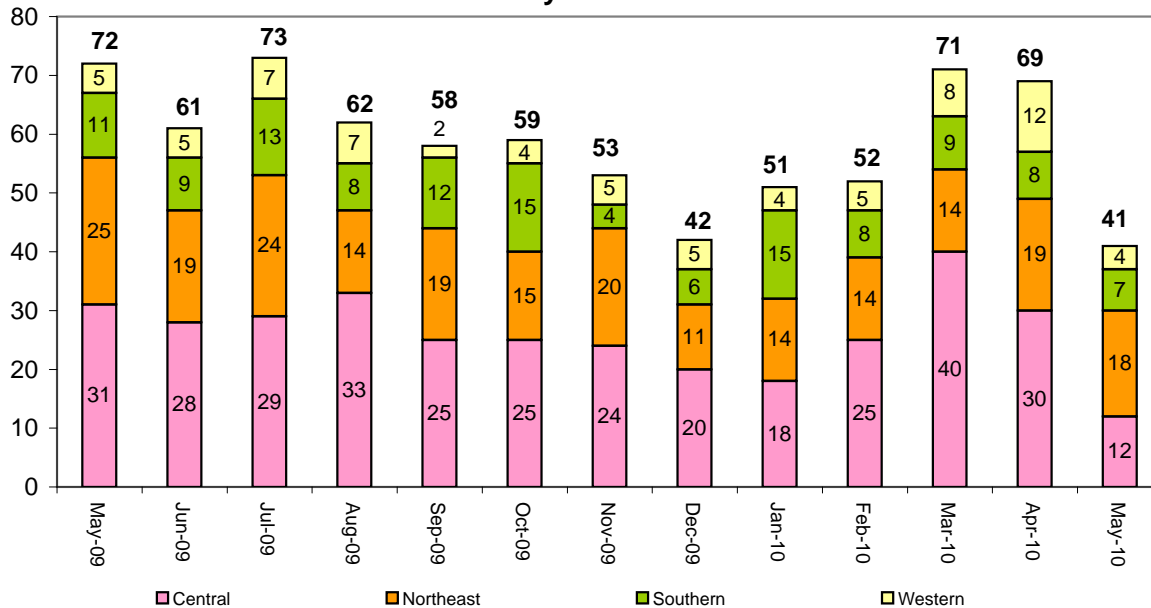
Commitment ADP by Region

Region	May 2010	% Change from prev. mo.	YTD
Central Region	501.3	-2.1%	531.4
Northeast Region	282.0	0.4%	304.6
Southern Region	220.0	0.1%	226.5
Western Region	117.5	-0.6%	113.0
Commitment ADP Total	1,120.8	-0.9%	1,175.5

New Commitments by Region

	May 2010	YTD	% Change from last YTD	May 2009	Last YTD
Central Region	12	295	-1.0%	31	298
Northeast Region	18	188	2.7%	25	183
Southern Region	7	111	-15.9%	11	132
Western Region	4	70	-16.7%	5	84
New Commitment Total	41	664	-4.7%	72	697

Monthly New Commitments



May 2010 DYC Population Report

V. Parole Services

Parole ADP by Region

	<u>May 2010</u>	<u>YTD</u>	<u>Last YTD</u>	<u>% Change from last YTD</u>
Central Region	202.0	189.5	177.0	7.0%
Northeast Region	130.2	123.7	128.5	-3.7%
Southern Region	69.0	85.7	89.5	-4.3%
Western Region	45.0	46.6	43.2	7.9%
Parole Total	446.2	445.5	438.2	1.7%

Parole Intakes

Parole Discharges

Parole LOS

	<u>May 2010</u>	<u>YTD</u>	<u>May 2010</u>	<u>YTD</u>	<u>YTD</u>
Central Region	27	314	34	283	6.8
Northeast Region	18	212	26	196	7.0
Southern Region	11	128	9	133	6.7
Western Region	3	75	6	70	6.2
Parole Total	59	729	75	682	6.8

Monthly Parole ADP

