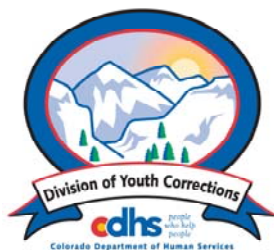


APRIL 2010 MONTHLY POPULATION REPORT

Prepared by the Division of Youth Corrections Research and Evaluation Unit May 19, 2010



Colorado Department of Human Services
Division of Youth Corrections

Working with Colorado Communities to Achieve Justice

April 2010

DYC Population Report

I.	Summary Population Data	1
II.	Detention ADP by Facility	2
III.	Commitment Services	
	A. State and Contract Secure ADP by Facility	3
	B. Community/Other Residential ADP by Facility	4
IV.	ADP and New Commitments by Region	5
V.	Parole Services	6

April 2010 DYC Population Report

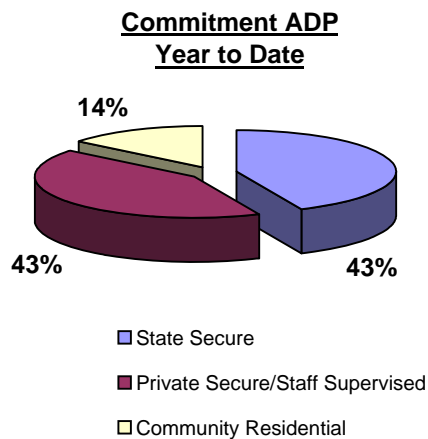
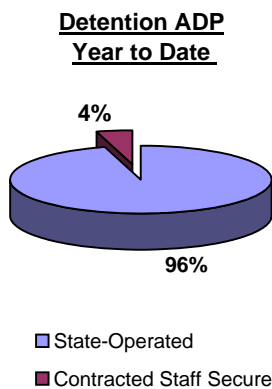
I. Summary Population Data*

DETAINED YOUTH	Average Daily Population (ADP)			Length of Stay (LOS)
	April 2010	% Change from prev. mo.	YTD	YTD
State-Operated	357.6	1.1%	342.8	14.0 days
Contracted Staff Secure	19.2	8.2%	15.9	12.2 days
Total Detained	376.8	1.4%	358.8	13.9 days

COMMITTED YOUTH	Average Daily Population (ADP)			Length of Service (LOS)
	April 2010		YTD	YTD
State Secure	508.4	-2.6%	503.8	
Private Secure/Staff Supervised	431.6	1.5%	494.5	
Community Residential	165.5	-2.8%	163.9	
Other Residential	25.6	4.5%	19.1	
Total Committed Residential	1,131.1	-0.9%	1,181.3	19.0 months
<i>Committed Residential w/o Boulder</i>	<i>1,126.1</i>	<i>-0.9%</i>	<i>1,178.2</i>	

PAROLED YOUTH	Average Daily Population (ADP)			Length of Service (LOS)
	April 2010		YTD	YTD
Total Paroled	469.7	2.9%	441.9	6.9 months

TOTAL STATEWIDE ADP	April 2010	% Change	YTD
	1,977.6	0.4%	1,982.0



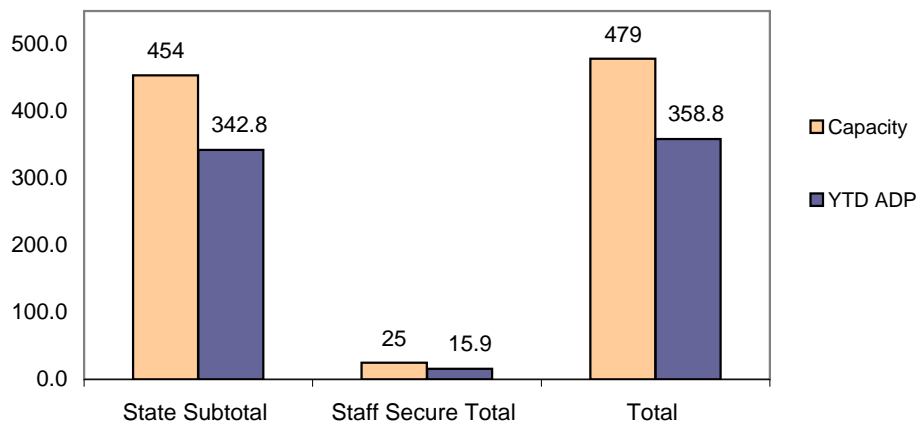
*Due to rounding, totals shown may not be an exact sum of the subtotals

April 2010 DYC Population Report

II. Detention ADP by Facility

Facility	Operating Capacity	Average Daily Population			New Admissions		YTD LOS in Days
		April 2010	YTD	YTD % of Capacity	April 2010	YTD	LOS
<i>State Operated Detention</i>							
Adams	29	23.6	21.7	75.0%	63	545	11.8
Gilliam	73	57.1	57.7	79.1%	131	973	18.4
Grand Mesa	31	18.8	21.0	67.7%	45	368	15.4
Marvin Foote	92	76.6	73.6	80.0%	129	1,261	16.9
Mount View	60	37.3	36.7	61.1%	100	835	13.2
Platte Valley	69	65.0	60.1	87.1%	139	1,479	12.2
Pueblo	42	27.2	27.8	66.3%	80	731	11.7
Spring Creek	58	52.0	44.1	76.0%	110	1,052	11.9
<i>State Subtotal</i>	<i>454</i>	<i>357.6</i>	<i>342.8</i>	<i>75.5%</i>	<i>797</i>	<i>7,244</i>	<i>14.0</i>
<i>Staff Secure Detention</i>							
Brown Center	2	0.2	1.2	59.2%	2	15	23.4
Midway (Remington)	8	7.0	5.4	67.5%	20	153	10.1
Robert DeNier	9	7.8	6.2	68.4%	15	132	14.6
Youthtrack San Luis Valley	6	4.3	3.2	53.5%	5	85	9.7
<i>Staff Secure Total</i>	<i>25</i>	<i>19.2</i>	<i>15.9</i>	<i>63.8%</i>	<i>42</i>	<i>385</i>	<i>12.2</i>
TOTAL	479	376.8	358.8	74.9%	839	7,629	13.9

**Detention
YTD ADP vs. Capacity**

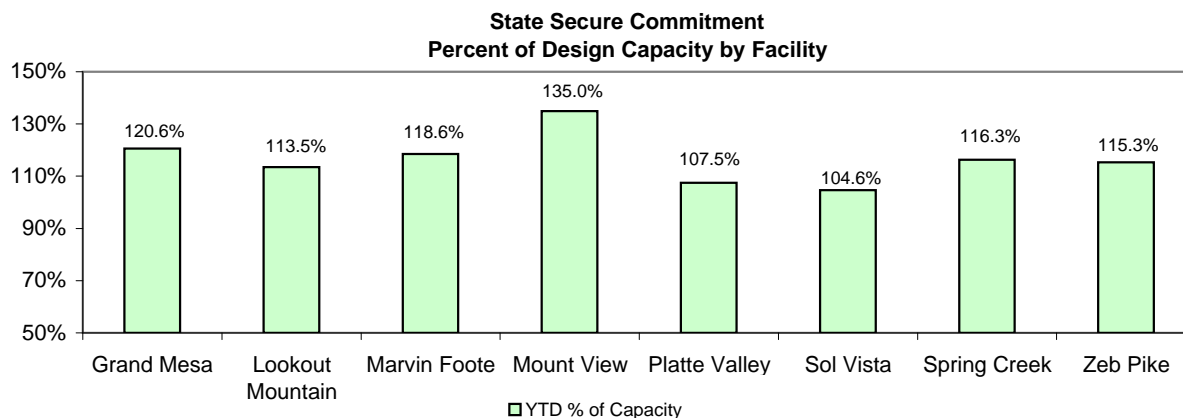


April 2010 DYC Population Report

III. Commitment Services

A. State and Contract Secure ADP by Facility

Facility	FY 2009-10 Capacity Jul 01 to Sep 30	Monthly Budgeted Capacity at 120%	YTD Budgeted Capacity at 120%	ADP		YTD % of Design Capacity	YTD % of Budgeted Capacity
				April 2010	YTD		
State Secure							
Adams	0	0	0	0.1	0.3	N/A	N/A
Gilliam	0	0	0	1.3	0.8	N/A	N/A
Grand Mesa	40	48	48	48.2	46.5	120.6%	96.4%
Lookout	152	178	176	172.5	173.4	113.5%	98.3%
Marvin Foote	20	26	25	23.7	20.8	118.6%	82.2%
Mount View	66	80	79	89.1	80.8	135.0%	102.5%
Platte Valley	59	72	71	63.4	69.5	107.5%	97.4%
Pueblo	0	0	0	0.0	0.2	N/A	N/A
Sol Vista	20	20	20	20.9	19.8	104.6%	99.1%
Spring Creek	41	53	52	47.7	49.9	116.3%	96.7%
Zeb Pike	36	44	43	41.5	41.9	115.3%	98.7%
<i>State Total</i>	<i>434</i>	<i>521.4</i>	<i>514.0</i>	<i>508.4</i>	<i>503.8</i>	<i>117.1%</i>	<i>96.6%</i>
Contract Secure/Staff Supervised							
Alternative Homes For Youth - Greeley				6.7	7.7		
Betty K. Marler Center				40.2	40.4		
Brown Center				2.0	2.3		
Childrens Ark				6.2	3.2		
Devereux Cleo Wallace				11.1	14.4		
Gateway Residential Program				2.9	2.7		
Griffith Centers for Children				0.0	0.1		
Hand Up Homes for Youth - West				1.9	2.5		
Hilltop (Residential Youth Services)				4.9	7.5		
Jefferson Hills				0.0	11.5		
Jefferson Hills Aurora				34.8	35.8		
Mountain Star Center				2.0	2.3		
Ridge View				284.2	329.8		
Robert DeNier				17.1	16.6		
Southern Peaks				4.3	10.4		
Third Way Center - Lowry				13.3	6.6		
Youth Villages				0.0	0.8		
<i>Contract Secure Subtotal</i>				<i>431.6</i>	<i>494.5</i>		



April 2010

DYC Population Report

III. Commitment Services Continued

B. Community/Other Residential ADP by Facility

<u>Facility</u>	<u>April 2010</u>	<u>YTD</u>
Community		
Ariel Clinical Services	3.4	2.4
Boulder Community Treatment Center	1.0	0.5
Community Corrections and Work Release	0.0	0.3
Crisis Connection Program	4.0	6.4
Dale House Project	11.1	11.5
Daybreak & Daybreak Princeton	3.0	1.1
Denver Area Youth Services (DAYS)	1.9	3.8
Gateway Youth and Family Services	1.0	1.3
Griffith Centers (SR)	1.8	1.4
Job Corps	4.8	5.3
Kidz Ark Sterling	5.2	4.1
Larimer Community Corrections	1.0	1.4
Longmont Community Treatment Center	0.6	0.2
Lost and Found Inc., Arvada	10.6	10.9
Lost and Found Inc., Morrison	0.0	0.9
Mesa County Community Corrections	7.0	3.5
Mt Evans Qualifying House	10.0	11.5
Reflections For Youth Inc., Grismore	0.2	0.9
Reflections For Youth Inc., Prairie View	1.0	1.7
ROP-Canyon State Academy	1.0	1.0
Southwest Colorado Community Corrections	0.8	0.3
Summit Treatment Service, Inc	19.9	18.7
Synergy Administration	8.3	10.3
Third Way Center	4.8	5.0
Third Way Center, Pontiac	4.0	7.3
Third Way Center, York	6.3	7.7
Third Way Center, Lincoln	6.3	4.1
Turning Point Center (Boys Residential)	25.0	17.5
Turning Point, Mathews St.	4.0	6.1
Youthtrack, San Luis Valley	2.0	1.5
Youthtrack, Work and Learn	9.7	9.3
Youth Ventures	5.8	6.3
<i>Community Subtotal</i>	<i>165.5</i>	<i>163.9</i>
<i>Private Contract Total</i>	<i>688.4</i>	<i>728.4</i>
Other Residential		
Job Corps Parole Program (Federally funded)	8.4	5.3
Shelter Care (short term)	1.9	1.0
Hospital	0.0	0.1
Immigration Detention Facility	3.5	1.9
Residential MH Program	3.4	3.1
Residential Drug/Alcohol Program	0.2	0.2
Residential Work Program	2.0	1.8
CMHI-Ft.Logan	0.0	0.4
CMHI-Pueblo	1.0	1.8
Other Mental Health Facility	2.5	1.0
<i>Other Residential Total*</i>	<i>25.6</i>	<i>19.1</i>
RESIDENTIAL TOTAL	1,131.1	1,181.3

*Other Residential Total may not accurately sum due to Trails-related issues

April 2010 DYC Population Report

IV. Commitment ADP and New Commitments by Region

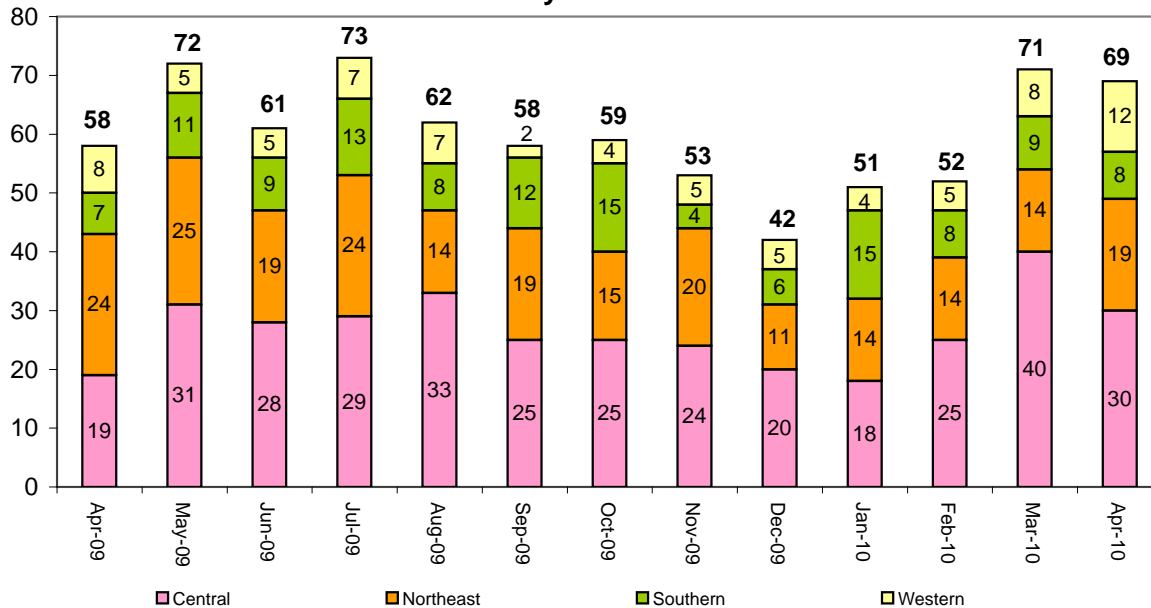
Commitment ADP by Region

Region	April 2010	% Change from prev. mo.	YTD
Central Region	512.2	-1.5%	535.2
Northeast Region	280.8	-4.0%	307.2
Southern Region	219.9	2.3%	226.3
Western Region	118.2	3.7%	112.5
Commitment ADP Total	1,131.1	-0.9%	1,181.3

New Commitments by Region

	April 2010	YTD	% Change from last YTD	April 2009	Last YTD
Central Region	30	281	6.8%	19	263
Northeast Region	19	170	7.6%	24	158
Southern Region	8	103	-14.2%	7	120
Western Region	12	66	-16.5%	8	79
New Commitment Total	69	620	0.0%	58	620

Monthly New Commitments



April 2010 DYC Population Report

V. Parole Services

Parole ADP by Region

	<u>April 2010</u>	<u>YTD</u>	<u>Last YTD</u>	<u>% Change from last YTD</u>
Central Region	214.90	188.26	179.8	4.7%
Northeast Region	132.39	122.46	127.9	-4.3%
Southern Region	75.16	87.25	91.4	-4.6%
Western Region	47.22	43.96	43.3	1.4%
Parole Total	469.7	441.9	442.5	-0.1%

Parole Intakes

Parole Discharges

Parole LOS

	<u>April 2010</u>	<u>YTD</u>	<u>April 2010</u>	<u>YTD</u>	<u>YTD</u>
Central Region	29	286	27	249	6.8
Northeast Region	20	190	5	168	7.2
Southern Region	6	117	14	123	6.9
Western Region	6	72	8	64	6.1
Parole Total	61	665	54	604	6.9

Monthly Parole ADP

