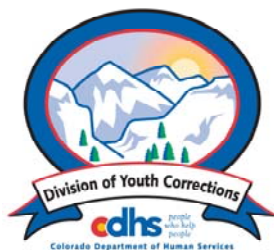


# MARCH 2010 MONTHLY POPULATION REPORT

---

Prepared by the Division of Youth Corrections Research and Evaluation Unit April 16, 2010



**Colorado Department of Human Services**  
**Division of Youth Corrections**

---

Working with Colorado Communities to Achieve Justice

# March 2010

## DYC Population Report

<b>I.</b>	<b>Summary Population Data</b>	<b>1</b>
<b>II.</b>	<b>Detention ADP by Facility</b>	<b>2</b>
<b>III.</b>	<b>Commitment Services</b>	
	A. State and Contract Secure ADP by Facility	<b>3</b>
	B. Community/Other Residential ADP by Facility	<b>4</b>
<b>IV.</b>	<b>ADP and New Commitments by Region</b>	<b>5</b>
<b>V.</b>	<b>Parole Services</b>	<b>6</b>

# March 2010 DYC Population Report

## I. Summary Population Data\*

DETAINED YOUTH	Average Daily Population (ADP)			Length of Stay (LOS)
	March 2010	% Change from prev. mo.	YTD	YTD
State-Operated	353.7	-1.2%	341.4	14.1 days
Contracted Staff Secure	17.8	-10.0%	15.5	12.2 days
<b>Total Detained</b>	<b>371.5</b>	<b>-1.7%</b>	<b>356.9</b>	<b>14.0 days</b>

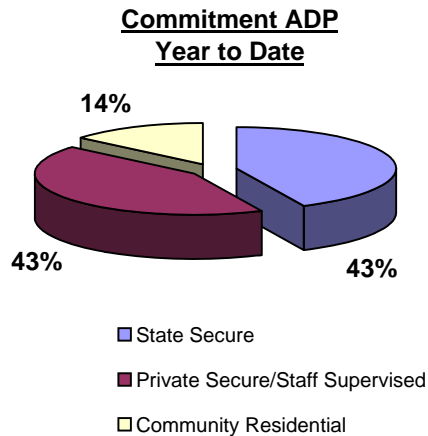
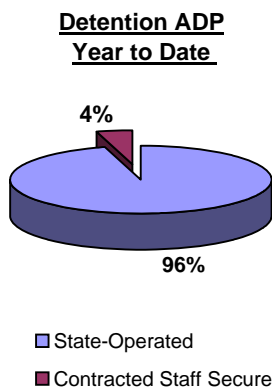
COMMITTED YOUTH	Average Daily Population (ADP)			Length of Service (LOS)
	March 2010		YTD	YTD
State Secure	521.8	2.6%	503.2	
Private Secure/Staff Supervised	425.0	-2.7%	501.6	
Community Residential	170.3	2.3%	163.7	
Other Residential	24.5	4.9%	19.2	
<b>Total Committed Residential</b>	<b>1,141.6</b>	<b>0.6%</b>	<b>1,187.7</b>	<b>19.0 months</b>
<i>Committed Residential w/o Boulder</i>	<i>1,136.6</i>	<i>0.4%</i>	<i>1,184.8</i>	

PAROLED YOUTH	Average Daily Population (ADP)			Length of Service (LOS)
	March 2010		YTD	YTD
Total Paroled	456.3	-0.1%	436.6	6.8 months

TOTAL STATEWIDE ADP	March 2010	% Change	YTD
	<b>1,969.5</b>	<b>0.0%</b>	<b>1,981.2</b>



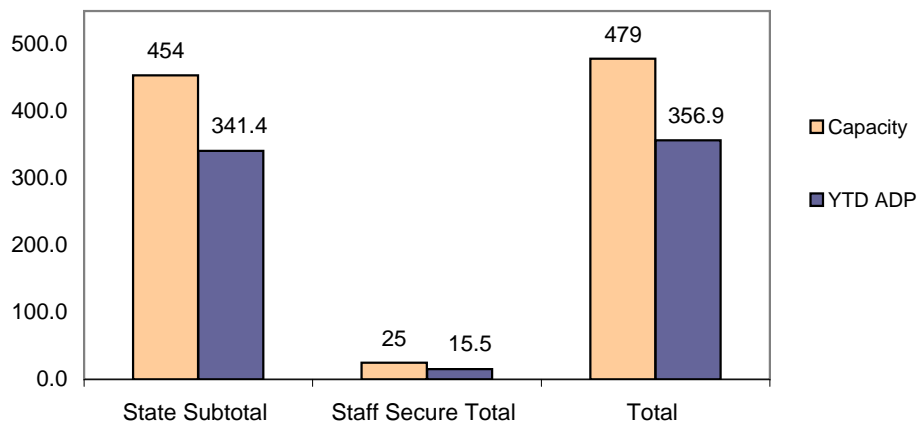
\*Due to rounding, totals shown may not be an exact sum of the subtotals

# March 2010 DYC Population Report

## II. Detention ADP by Facility

Facility	Operating Capacity	Average Daily Population		YTD % of Capacity	New Admissions		YTD LOS in Days
		March 2010	YTD		March 2010	YTD	
<i>State Operated Detention</i>							
Adams	29	24.1	21.5	74.3%	69	482	11.5
Gilliam	73	61.7	57.8	79.1%	104	842	18.8
Grand Mesa	31	19.7	21.2	68.5%	39	323	15.7
Marvin Foote	92	80.2	73.3	79.7%	146	1,131	16.9
Mount View	60	33.7	36.6	61.0%	104	736	13.5
Platte Valley	69	59.3	59.8	86.6%	144	1,342	12.1
Pueblo	42	26.1	27.9	66.4%	86	651	12.0
Spring Creek	58	49.1	43.2	74.5%	146	942	12.1
<i>State Subtotal</i>	<i>454</i>	<i>353.7</i>	<i>341.4</i>	<i>75.2%</i>	<i>838</i>	<i>6,449</i>	<i>14.1</i>
<i>Staff Secure Detention</i>							
Brown Center	2	1.8	1.3	64.8%	1	13	26.2
Midway (Remington)	8	5.7	5.2	65.4%	25	133	10.5
Robert DeNier	9	6.0	5.9	65.3%	14	116	14.2
Youthtrack San Luis Valley	6	4.2	3.1	51.4%	5	80	9.6
<i>Staff Secure Total</i>	<i>25</i>	<i>17.8</i>	<i>15.5</i>	<i>62.0%</i>	<i>45</i>	<i>342</i>	<i>12.2</i>
<b>TOTAL</b>	<b>479</b>	<b>371.5</b>	<b>356.9</b>	<b>74.5%</b>	<b>883</b>	<b>6,791</b>	<b>14.0</b>

**Detention  
YTD ADP vs. Capacity**

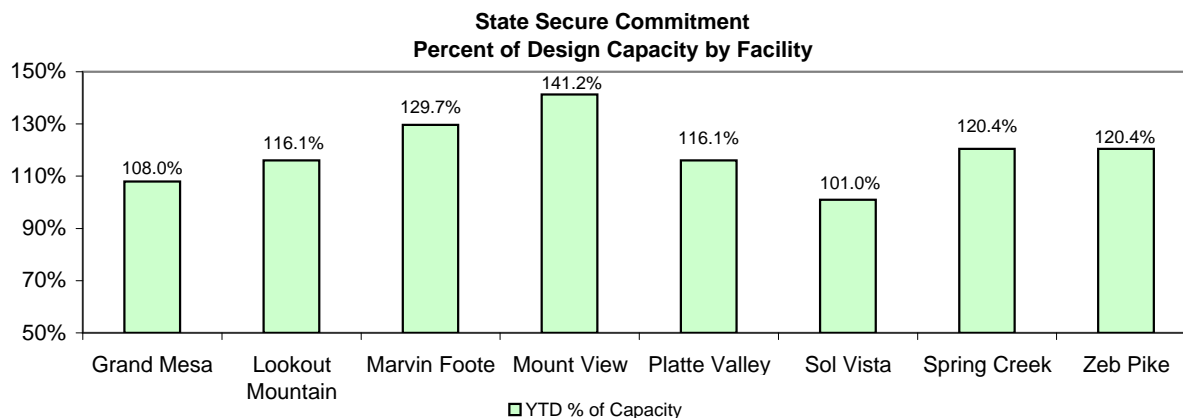


# March 2010 DYC Population Report

## III. Commitment Services

### A. State and Contract Secure ADP by Facility

Facility	FY 2009-10		ADP		YTD % of Design Capacity	YTD % of Budgeted Capacity	
	Capacity Jul 01 to Sep 30	Monthly Budgeted Capacity at 120%	YTD Budgeted Capacity at 120%	March 2010 YTD			
<b>State Secure</b>							
Adams	0	0	0	1.0	0.3	N/A	N/A
Gilliam	0	0	0	0.6	0.8	N/A	N/A
Grand Mesa	40	48	48	43.2	46.2	108.0%	95.7%
Lookout	152	178	176	176.4	173.5	116.1%	98.4%
Marvin Foote	20	26	25	25.9	20.5	129.7%	80.9%
Mount View	66	80	79	93.2	79.8	141.2%	101.3%
Platte Valley	59	72	71	68.5	70.1	116.1%	98.3%
Pueblo	0	0	0	0.0	0.2	N/A	N/A
Sol Vista	20	20	20	20.2	19.7	101.0%	98.5%
Spring Creek	41	53	52	49.4	50.1	120.4%	97.2%
Zeb Pike	36	44	43	43.4	42.0	120.4%	98.8%
<i>State Total</i>	<i>434</i>	<i>521.4</i>	<i>514.0</i>	<i>521.8</i>	<i>503.2</i>	<i>120.2%</i>	<i>96.5%</i>
<b>Contract Secure/Staff Supervised</b>							
Alternative Homes For Youth - Greeley				6.3	7.8		
Betty K. Marler Center				39.6	40.4		
Brown Center				2.0	2.4		
Childrens Ark				3.3	2.9		
Devereux Cleo Wallace				12.5	14.8		
Gateway Residential Program				2.0	2.7		
Griffith Centers for Children				0.0	0.1		
Hand Up Homes for Youth - West				2.0	2.6		
Hilltop (Residential Youth Services)				5.6	8.1		
Jefferson Hills				1.4	12.7		
Jefferson Hills Aurora				32.3	35.9		
Mountain Star Center				2.3	2.3		
Ridge View				282.7	334.8		
Robert DeNier				18.0	16.5		
Southern Peaks				4.0	11.0		
Third Way Center - Lowry				10.9	5.8		
Youth Villages				0.4	0.9		
<i>Contract Secure Subtotal</i>				<i>425.0</i>	<i>501.6</i>		



# March 2010

## DYC Population Report

### III. Commitment Services Continued

#### B. Community/Other Residential ADP by Facility

<u>Facility</u>	<u>March 2010</u>	<u>YTD</u>
<b>Community</b>		
Ariel Clinical Services	4.0	2.3
Boulder Community Treatment Center	0.8	0.4
Community Corrections and Work Release	0.0	0.3
Crisis Connection Program	5.3	6.9
Dale House Project	9.7	11.5
Daybreak & Daybreak Princeton	1.2	0.7
Denver Area Youth Services (DAYS)	2.0	4.0
Gateway Youth and Family Services	1.0	1.3
Griffith Centers (SR)	0.7	1.4
Job Corps	4.8	5.3
Kidz Ark Sterling	6.0	4.0
Larimer Community Corrections	1.0	1.5
Longmont Community Treatment Center	1.0	0.2
Lost and Found Inc., Arvada	12.8	10.9
Lost and Found Inc., Morrison	0.0	1.0
Mesa County Community Corrections	5.7	3.1
Mt Evans Qualifying House	13.0	11.7
Reflections For Youth Inc., Grismore	1.0	1.0
Reflections For Youth Inc., Prairie View	1.0	1.7
ROP-Canyon State Academy	1.0	0.9
Southwest Colorado Community Corrections	0.0	0.2
Summit Treatment Service, Inc	17.4	18.6
Synergy Administration	9.0	10.5
Third Way Center	5.7	5.0
Third Way Center, Pontiac	6.2	7.6
Third Way Center, York	7.4	7.9
Third Way Center, Lincoln	6.6	3.9
Turning Point Center (Boys Residential)	22.5	16.7
Turning Point, Mathews St.	4.4	6.3
Youthtrack, San Luis Valley	2.0	1.4
Youthtrack, Work and Learn	11.4	9.3
Youth Ventures	6.0	6.3
<i>Community Subtotal</i>	<i>170.3</i>	<i>163.7</i>
<i>Private Contract Total</i>	<i>693.2</i>	<i>728.2</i>
<b>Other Residential</b>		
Job Corps Parole Program (Federally funded)	7.2	5.0
Shelter Care (short term)	0.5	1.0
Hospital	0.2	0.1
Immigration Detention Facility	4.5	2.6
Residential MH Program	3.0	3.1
Residential Drug/Alcohol Program	0.0	0.2
Residential Work Program	1.0	1.7
CMHI-Ft.Logan	0.0	0.5
CMHI-Pueblo	1.6	1.9
Other Mental Health Facility	2.4	0.9
<i>Other Residential Total*</i>	<i>24.5</i>	<i>19.2</i>
<b>RESIDENTIAL TOTAL</b>	<b>1,141.6</b>	<b>1,187.7</b>

\*Other Residential Total may not accurately sum due to Trails-related issues

# March 2010 DYC Population Report

## IV. Commitment ADP and New Commitments by Region

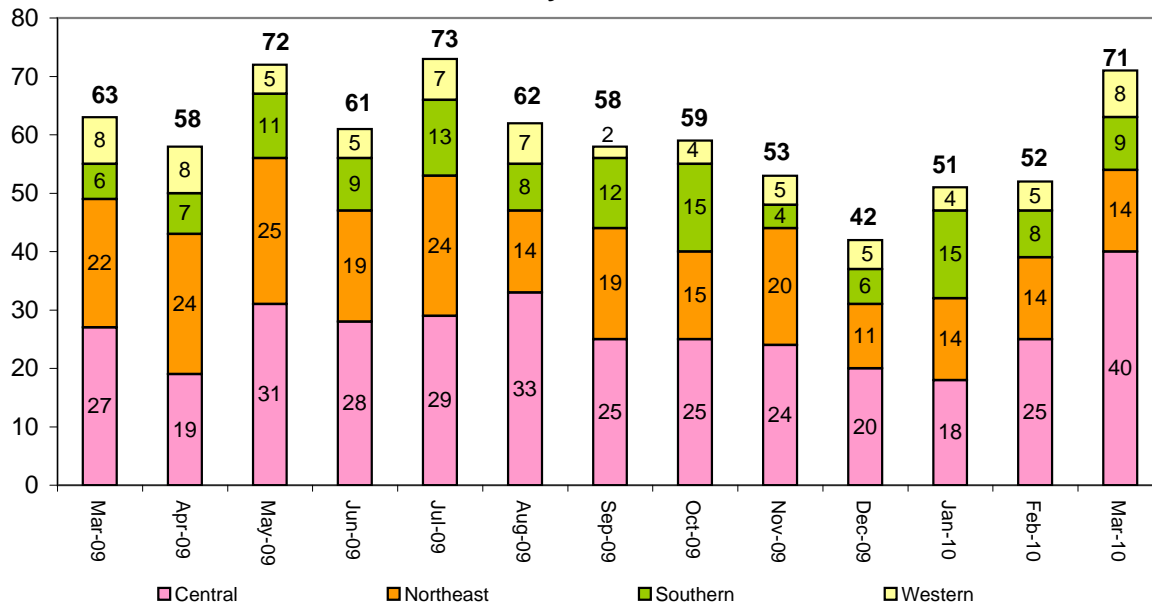
### Commitment ADP by Region

Region	March 2010	% Change from prev. mo.	YTD
Central Region	520.1	2.0%	538.4
Northeast Region	292.6	-1.2%	310.0
Southern Region	214.8	-0.5%	227.0
Western Region	114.0	1.0%	112.2
<b>Commitment ADP Total</b>	<b>1,141.6</b>	<b>0.6%</b>	<b>1,187.7</b>

### New Commitments by Region

	March 2010	YTD	% Change from last YTD	March 2009	Last YTD
Central Region	40	248	3.3%	27	240
Northeast Region	14	151	12.7%	22	134
Southern Region	9	95	-15.2%	6	112
Western Region	8	53	-25.4%	8	71
<b>New Commitment Total</b>	<b>71</b>	<b>547</b>	<b>-1.8%</b>	<b>63</b>	<b>557</b>

### Monthly New Commitments



# March 2010 DYC Population Report

## V. Parole Services

### Parole ADP by Region

	<u>March 2010</u>	<u>YTD</u>	<u>Last YTD</u>	<u>% Change from last YTD</u>
Central Region	209.0	182.6	180.5	1.1%
Northeast Region	121.7	121.8	128.3	-5.1%
Southern Region	79.5	88.7	92.7	-4.4%
Western Region	46.1	43.6	43.7	-0.3%
<b>Parole Total</b>	<b>456.3</b>	<b>436.6</b>	<b>445.3</b>	<b>-2.0%</b>

### Parole Intakes

### Parole Discharges

### Parole LOS

	<u>March 2010</u>	<u>YTD</u>	<u>March 2010</u>	<u>YTD</u>	<u>YTD</u>
Central Region	28	257	20	220	6.6
Northeast Region	23	168	9	159	7.3
Southern Region	7	110	5	107	6.7
Western Region	8	66	4	57	6.1
<b>Parole Total</b>	<b>66</b>	<b>601</b>	<b>38</b>	<b>543</b>	<b>6.8</b>

### Monthly Parole ADP

