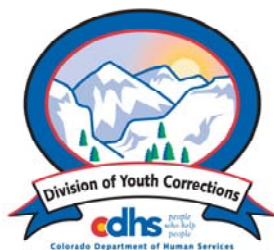


FEBRUARY 2010 MONTHLY POPULATION REPORT

Prepared by the Division of Youth Corrections Research and Evaluation Unit March 17, 2010



Colorado Department of Human Services
Division of Youth Corrections

Working with Colorado Communities to Achieve Justice

February 2010 DYC Population Report

I.	Summary Population Data	1
II.	Detention ADP by Facility	2
III.	Commitment Services	
	A. State and Contract Secure ADP by Facility	3
	B. Community/Other Residential ADP by Facility	4
IV.	ADP and New Commitments by Region	5
V.	Parole Services	6

February 2010 DYC Population Report

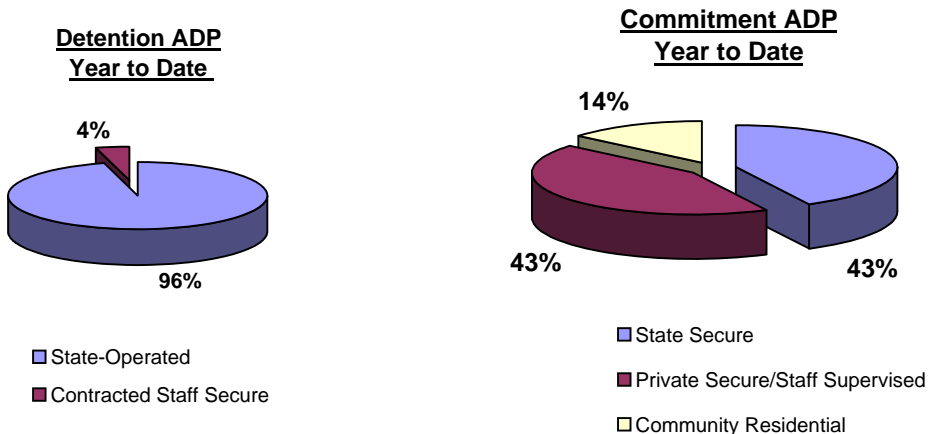
I. Summary Population Data*

DETAINED YOUTH	Average Daily Population (ADP)			Length of Stay (LOS)
	February 2010	% Change from prev. mo.	YTD	YTD
State-Operated	358.1	10.9%	340.3	14.2 days
Contracted Staff Secure	19.7	28.7%	15.2	12.2 days
Total Detained	377.8	11.7%	355.5	14.1 days

COMMITTED YOUTH	Average Daily Population (ADP)			Length of Service (LOS)
	February 2010		YTD	YTD
State Secure	508.4	2.3%	500.9	
Private Secure/Staff Supervised	436.7	-3.1%	511.8	
Community Residential	166.6	4.0%	162.9	
Other Residential	23.3	16.8%	18.7	
Total Committed Residential	1,135.0	0.6%	1,194.2	18.9 months
<i>Committed Residential w/o Boulder</i>	<i>1,131.8</i>	<i>0.6%</i>	<i>1,191.6</i>	

PAROLED YOUTH	Average Daily Population (ADP)			Length of Service (LOS)
	February 2010		YTD	YTD
Total Paroled	456.9	0.0%	432.6	6.7 months

TOTAL STATEWIDE ADP	February 2010	% Change	YTD
	1,969.7	2.4%	1,982.3



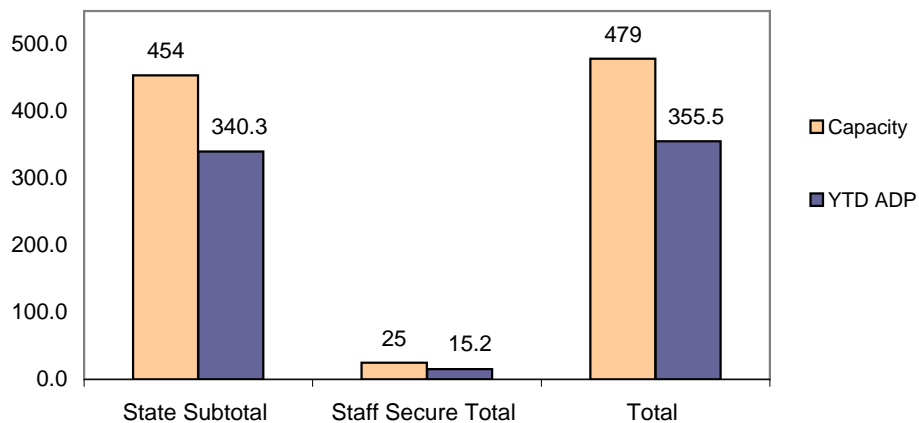
*Due to rounding, totals shown may not be an exact sum of the subtotals

February 2010 DYC Population Report

II. Detention ADP by Facility

Facility	Operating Capacity	Average Daily Population			New Admissions		YTD LOS in Days
		February 2010	YTD	YTD % of Capacity	February 2010	YTD	LOS
<i>State Operated Detention</i>							
Adams	29	24.0	21.2	73.1%	52	413	11.6
Gilliam	73	63.8	57.3	78.4%	115	738	19.1
Grand Mesa	31	19.4	21.4	69.1%	30	284	15.6
Marvin Foote	92	78.6	72.4	78.7%	119	987	17.1
Mount View	60	39.3	37.0	61.7%	79	631	13.7
Platte Valley	69	62.6	60.3	87.4%	134	1,202	11.9
Pueblo	42	27.8	28.1	67.0%	69	565	12.1
Spring Creek	58	42.7	42.5	73.2%	96	796	12.5
<i>State Subtotal</i>	<i>454</i>	<i>358.1</i>	<i>340.3</i>	<i>75.0%</i>	<i>694</i>	<i>5,616</i>	<i>14.2</i>
<i>Staff Secure Detention</i>							
Brown Center	2	1.3	1.2	61.7%	3	12	26.2
Midway (Remington)	8	5.5	5.2	64.6%	12	108	10.8
Robert DeNier	9	7.9	5.9	65.2%	13	102	14.3
Youthtrack San Luis Valley	6	5.0	2.9	49.0%	12	75	9.1
<i>Staff Secure Total</i>	<i>25</i>	<i>19.7</i>	<i>15.2</i>	<i>60.8%</i>	<i>40</i>	<i>297</i>	<i>12.2</i>
TOTAL	479	377.8	355.5	74.2%	734	5,913	14.1

**Detention
YTD ADP vs. Capacity**



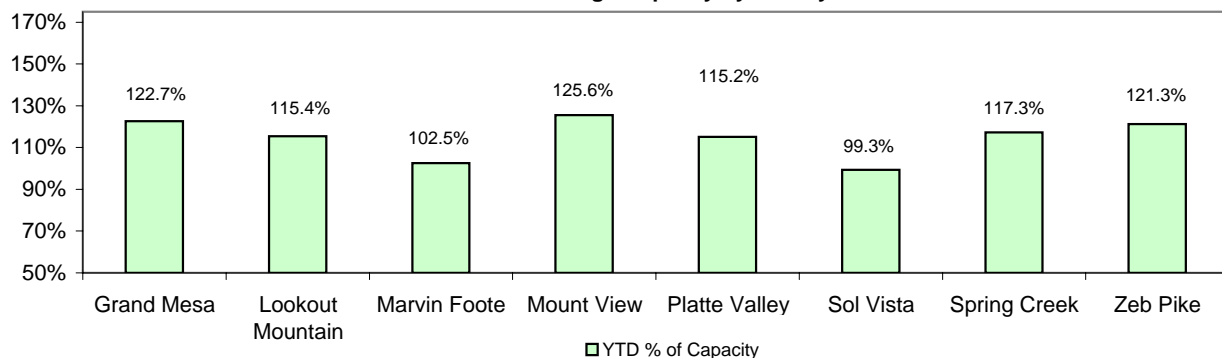
February 2010 DYC Population Report

III. Commitment Services

A. State and Contract Secure ADP by Facility

Facility	FY 2009-10 Capacity Jul 01 to Sep 30	Monthly Budgeted Capacity at 120%	YTD Budgeted Capacity at 120%	ADP		YTD % of Design Capacity	YTD % of Budgeted Capacity
				February 2010	YTD		
State Secure							
Adams	0	0	0	0.1	0.2	N/A	N/A
Gilliam	0	0	0	0.6	0.9	N/A	N/A
Grand Mesa	40	48	48	49.1	46.6	122.7%	96.7%
Lookout	152	178	176	175.4	173.1	115.4%	98.2%
Marvin Foote	20	26	25	20.5	19.8	102.5%	78.2%
Mount View	66	80	79	82.9	78.1	125.6%	99.2%
Platte Valley	59	72	71	68.0	70.3	115.2%	98.6%
Pueblo	0	0	0	0.4	0.2	N/A	N/A
Sol Vista	20	20	20	19.9	19.6	99.3%	98.2%
Spring Creek	41	53	52	48.1	50.2	117.3%	97.4%
Zeb Pike	36	44	43	43.7	41.8	121.3%	98.4%
<i>State Total</i>	<i>434</i>	<i>521.4</i>	<i>514.0</i>	<i>508.4</i>	<i>500.9</i>	<i>117.1%</i>	<i>96.1%</i>
Contract Secure/Staff Supervised							
Alternative Homes For Youth - Greeley				7.9	8.0		
Betty K. Marler Center				39.5	40.5		
Brown Center				2.2	2.4		
Childrens Ark				2.2	2.8		
Devereux Cleo Wallace				13.3	15.1		
Gateway Residential Program				2.0	2.8		
Griffith Centers for Children				0.0	0.2		
Hand Up Homes for Youth - West				1.9	2.6		
Hilltop (Residential Youth Services)				5.3	8.4		
Jefferson Hills				8.8	14.2		
Jefferson Hills Aurora				31.5	36.4		
Mountain Star Center				2.0	2.3		
Ridge View				292.4	341.7		
Robert DeNier				16.5	16.3		
Southern Peaks				5.0	11.9		
Third Way Center - Lowry				5.1	5.2		
Youth Villages				1.0	1.0		
<i>Contract Secure Subtotal</i>				<i>436.7</i>	<i>511.8</i>		

**State Secure Commitment
Percent of Design Capacity by Facility**



February 2010 DYC Population Report

III. Commitment Services Continued B. Community/Other Residential ADP by Facility

<u>Facility</u>	<u>February</u> <u>2010</u>	<u>YTD</u>
Community		
Ariel Clinical Services	2.7	2.1
Boulder Community Treatment Center	0.1	0.4
Community Corrections and Work Release	0.0	0.4
Dale House Project	10.8	11.8
Daybreak & Daybreak Princeton	6.7	7.7
Denver Area Youth Services (DAYS)	2.8	4.2
Gateway Youth and Family Services	0.2	1.3
Griffith Centers (SR)	1.0	1.7
Job Corps	4.6	5.2
Kidz Ark Sterling	6.0	3.8
Larimer Community Corrections	1.0	1.5
Longmont Community Treatment Center	0.5	0.1
Lost and Found Inc., Arvada	11.5	10.6
Lost and Found Inc., Morrison	0.0	1.1
Mesa County Community Corrections	4.0	2.8
Mt Evans Qualifying House	12.6	11.5
Reflections For Youth Inc., Grismore	1.0	1.0
Reflections For Youth Inc., Prairie View	1.9	1.8
ROP-Canyon State Academy	1.0	0.9
Southwest Colorado Community Corrections	0.0	0.2
Summit Treatment Service, Inc	18.9	18.7
Synergy Administration	10.4	10.7
Third Way Center	5.9	4.9
Third Way Center, Pontiac	7.6	7.8
Third Way Center, York	6.7	8.1
Third Way Center, Lincoln	5.5	3.4
Turning Point Center (Boys Residential)	18.8	16.0
Turning Point, Mathews St.	5.0	6.6
Youthtrack, San Luis Valley	2.0	1.4
Youthtrack, Work and Learn	11.6	9.0
Youth Ventures	5.8	6.4
<i>Community Subtotal</i>	<i>166.6</i>	<i>162.9</i>
<i>Private Contract Total</i>	<i>689.5</i>	<i>727.3</i>
Other Residential		
Job Corps Parole Program (Federally funded)	7.4	4.9
Shelter Care (short term)	1.8	1.0
Hospital	0.0	0.1
Immigration Detention Facility	5.0	2.3
Residential MH Program	2.9	3.1
Residential Drug/Alcohol Program	1.0	0.3
Residential Work Program	1.6	1.8
CMHI-Ft.Logan	0.0	0.6
CMHI-Pueblo	1.5	2.0
Other Mental Health Facility	1.1	0.7
<i>Other Residential Total*</i>	<i>23.3</i>	<i>18.7</i>
RESIDENTIAL TOTAL	1,135.0	1,194.2

*Other Residential Total may not accurately sum due to Trails-related issues

February 2010 DYC Population Report

IV. Commitment ADP and New Commitments by Region

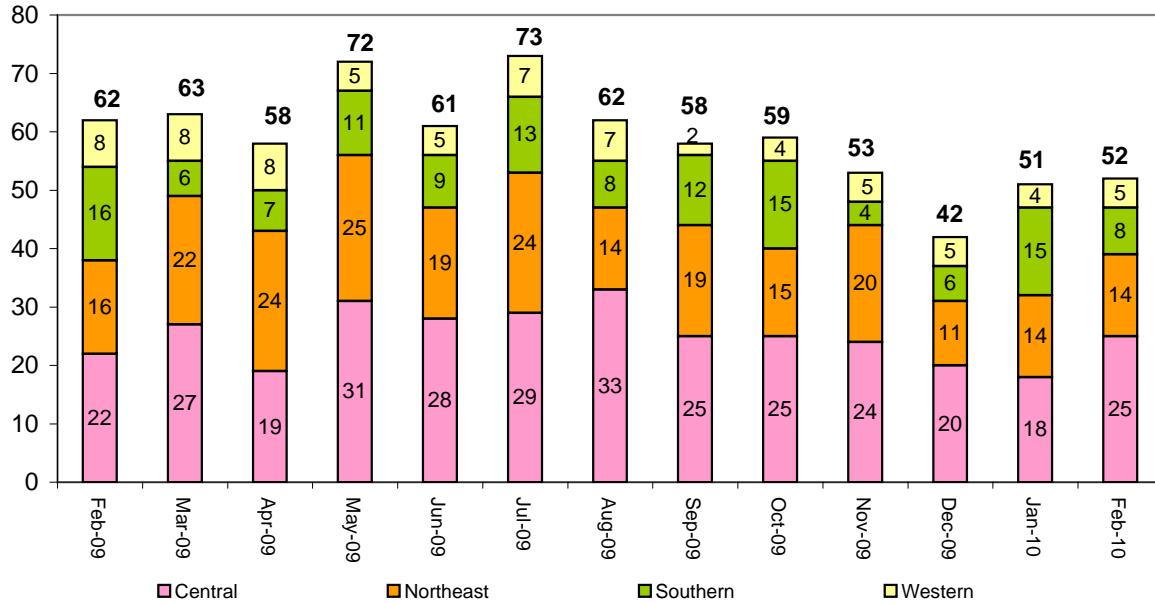
Commitment ADP by Region

Region	<u>February 2010</u>	<u>% Change from prev. mo.</u>	<u>YTD</u>
Central Region	509.9	0.0%	540.0
Northeast Region	296.2	-0.5%	313.1
Southern Region	216.0	0.9%	228.9
Western Region	112.8	6.6%	112.3
Commitment ADP Total	1,135.0	0.6%	1,194.2

New Commitments by Region

	<u>February 2010</u>	<u>YTD</u>	<u>% Change from last YTD</u>	<u>February 2009</u>	<u>Last YTD</u>
Central Region	25	208	-1.9%	22	212
Northeast Region	14	135	19.5%	16	113
Southern Region	8	86	-18.9%	16	106
Western Region	5	45	-28.6%	8	63
New Commitment Total	52	474	-4.0%	62	494

Monthly New Commitments



February 2010 DYC Population Report

V. Parole Services

Parole ADP by Region

	<u>Feb. 2010</u>	<u>YTD</u>	<u>Last YTD</u>	<u>% Change from last YTD</u>
Central Region	204.5	178.2	185.4	-3.9%
Northeast Region	120.7	121.7	128.2	-5.1%
Southern Region	86.6	88.7	94.7	-6.3%
Western Region	45.1	44.0	45.3	-2.9%
Parole Total	456.9	432.6	453.7	-4.6%

Parole Intakes

Parole Discharges

Parole LOS

	<u>Feb. 2010</u>	<u>YTD</u>	<u>Feb. 2010</u>	<u>YTD</u>	<u>YTD</u>
Central Region	22	228	24	199	6.4
Northeast Region	11	145	15	147	7.3
Southern Region	6	103	16	101	6.8
Western Region	9	60	7	51	6.1
Parole Total	48	536	62	498	6.7

Monthly Parole ADP

