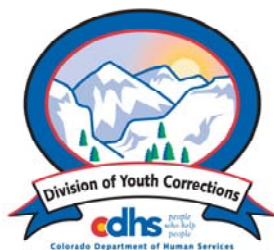


JANUARY 2010 MONTHLY POPULATION REPORT

Prepared by the Division of Youth Corrections Research and Evaluation Unit February 17, 2010



Colorado Department of Human Services
Division of Youth Corrections

Working with Colorado Communities to Achieve Justice

January 2010 DYC Population Report

I.	Summary Population Data	1
II.	Detention ADP by Facility	2
III.	Commitment Services	
	A. State and Contract Secure ADP by Facility	3
	B. Community/Other Residential ADP by Facility	4
IV.	ADP and New Commitments by Region	5
V.	Parole Services	6

January 2010 DYC Population Report

I. Summary Population Data*

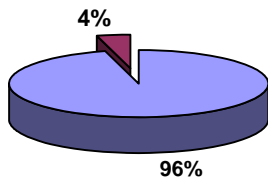
DETAINED YOUTH	Average Daily Population (ADP)			Length of Stay (LOS)
	January 2010	% Change from prev. mo.	YTD	YTD
State-Operated	322.8	-2.3%	338.0	14.2 days
Contracted Staff Secure	15.3	25.3%	14.6	12.5 days
Total Detained	338.1	-1.3%	352.7	14.1 days

COMMITTED YOUTH	Average Daily Population (ADP)			Length of Service (LOS)
	January 2010		YTD	YTD
State Secure	497.0	0.0%	499.8	
Private Secure/Staff Supervised	450.5	-7.9%	521.5	
Community Residential	160.2	-1.9%	161.7	
Other Residential	20.0	11.0%	18.4	
Total Committed Residential	1,127.7	-3.4%	1,201.5	19.0 months
<i>Committed Residential w/o Boulder</i>	<i>1,124.8</i>	<i>-3.4%</i>	<i>1,199.0</i>	

PAROLED YOUTH	Average Daily Population (ADP)			Length of Service (LOS)
	January 2010		YTD	YTD
Total Paroled	457.1	1.1%	429.9	6.8 months

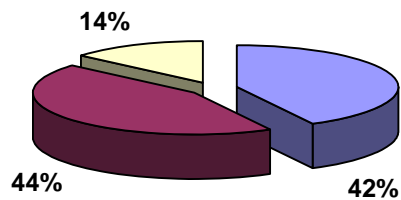
TOTAL STATEWIDE ADP	January 2010	% Change	YTD
	1,922.9	-2.0%	1,984.1

Detention ADP
Year to Date



■ State-Operated
■ Contracted Staff Secure

Commitment ADP
Year to Date



■ State Secure
■ Private Secure/Staff Supervised
■ Community Residential

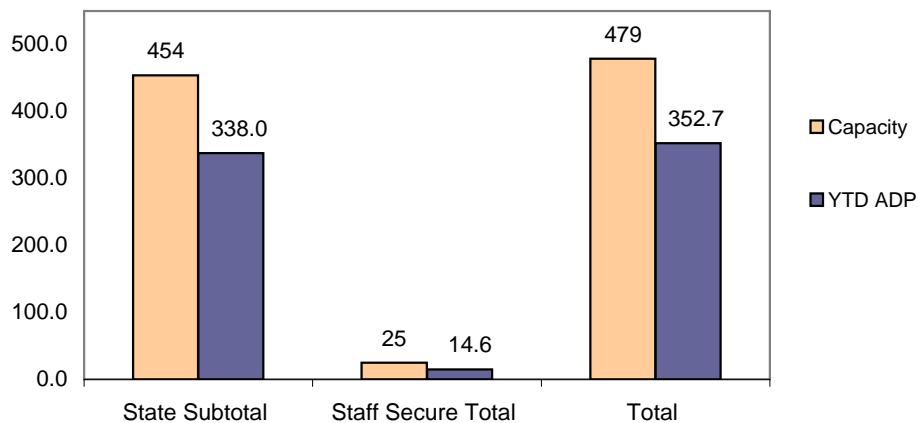
*Due to rounding, totals shown may not be an exact sum of the subtotals

January 2010 DYC Population Report

II. Detention ADP by Facility

Facility	Operating Capacity	Average Daily Population			New Admissions		YTD LOS in Days
		January 2010	YTD	YTD % of Capacity	January 2010	YTD	LOS
<i>State Operated Detention</i>							
Adams	29	18.5	20.8	71.9%	29	361	11.3
Gilliam	73	51.8	56.4	77.3%	79	623	19.2
Grand Mesa	31	21.6	21.7	70.0%	35	254	15.3
Marvin Foote	92	62.0	71.6	77.9%	117	867	17.1
Mount View	60	38.5	36.7	61.2%	100	553	14.1
Platte Valley	69	59.2	60.0	87.0%	162	1,069	12.0
Pueblo	42	26.6	28.2	67.1%	66	496	11.9
Spring Creek	58	44.6	42.5	73.2%	102	700	12.3
<i>State Subtotal</i>	<i>454</i>	<i>322.8</i>	<i>338.0</i>	<i>74.5%</i>	<i>690</i>	<i>4,923</i>	<i>14.2</i>
<i>Staff Secure Detention</i>							
Brown Center	2	1.5	1.2	61.1%	0	9	26.8
Midway (Remington)	8	4.4	5.1	64.2%	12	97	11.2
Robert DeNier	9	5.6	5.6	62.2%	16	89	14.6
Youthtrack San Luis Valley	6	3.9	2.7	44.6%	9	63	9.0
<i>Staff Secure Total</i>	<i>25</i>	<i>15.3</i>	<i>14.6</i>	<i>58.5%</i>	<i>37</i>	<i>258</i>	<i>12.5</i>
TOTAL	479	338.1	352.7	73.6%	727	5,181	14.1

**Detention
YTD ADP vs. Capacity**



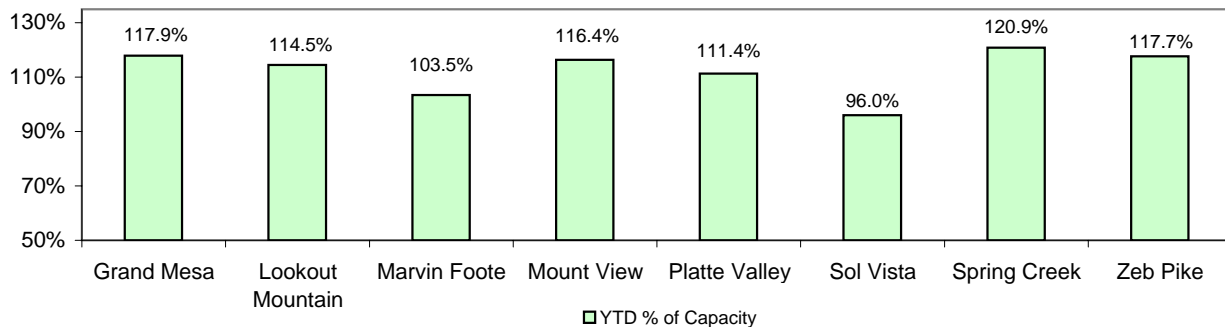
January 2010 DYC Population Report

III. Commitment Services

A. State and Contract Secure ADP by Facility

Facility	FY 2009-10 Capacity Jul 01 to Sep 30	Monthly Budgeted Capacity at 120%	YTD Budgeted Capacity at 120%	ADP		YTD % of Design Capacity	YTD % of Budgeted Capacity
				January 2010	YTD		
State Secure							
Adams	0	0	0	0.7	0.2	N/A	N/A
Gilliam	0	0	0	0.4	0.9	N/A	N/A
Grand Mesa	40	48	48	47.2	46.2	117.9%	95.9%
Lookout	152	178	176	174.0	172.7	114.5%	98.0%
Marvin Foote	20	26	25	20.7	19.7	103.5%	77.7%
Mount View	66	80	79	76.8	77.5	116.4%	98.4%
Platte Valley	59	72	71	65.7	70.6	111.4%	99.1%
Pueblo	0	0	0	0.3	0.2	N/A	N/A
Sol Vista	20	20	20	19.2	19.6	96.0%	98.0%
Spring Creek	41	53	52	49.6	50.5	120.9%	97.9%
Zeb Pike	36	44	43	42.4	41.6	117.7%	97.8%
<i>State Total</i>	<i>434</i>	<i>521.4</i>	<i>514.0</i>	<i>497.0</i>	<i>499.8</i>	<i>114.5%</i>	<i>95.9%</i>
Contract Secure/Staff Supervised							
Alternative Homes For Youth - Greeley				8.4	8.0		
Betty K. Marler Center				40.6	40.7		
Brown Center				2.1	2.4		
Childrens Ark				2.2	2.9		
Devereux Cleo Wallace				12.1	15.3		
Gateway Residential Program				2.0	2.9		
Griffith Centers for Children				0.0	0.2		
Hand Up Homes for Youth - West				3.0	2.7		
Hilltop (Residential Youth Services)				5.3	8.8		
Jefferson Hills				9.4	14.9		
Jefferson Hills Aurora				34.3	37.0		
Mountain Star Center				2.5	2.4		
Ridge View				300.3	348.2		
Robert DeNier				17.2	16.3		
Southern Peaks				6.2	12.8		
Third Way Center - Lowry				3.9	5.2		
Youth Villages				1.0	1.0		
<i>Contract Secure Subtotal</i>				<i>450.5</i>	<i>521.5</i>		

**State Secure Commitment
Percent of Design Capacity by Facility**



January 2010

DYC Population Report

III. Commitment Services Continued

B. Community/Other Residential ADP by Facility

<u>Facility</u>	<u>January</u> <u>2010</u>	<u>YTD</u>
Community		
Ariel Clinical Services	2.6	1.9
Boulder Community Treatment Center	1.0	0.4
Community Corrections and Work Release	0.0	0.4
Dale House Project	9.6	11.9
Daybreak & Daybreak Princeton	8.1	7.9
Denver Area Youth Services (DAYS)	3.4	4.4
Gateway Youth and Family Services	0.0	1.5
Griffith Centers (SR)	1.0	1.7
Job Corps	4.0	4.9
Kidz Ark Sterling	6.0	3.5
Larimer Community Corrections	1.1	1.6
Lost and Found Inc., Arvada	10.6	10.5
Lost and Found Inc., Morrison	0.0	1.2
Mesa County Community Corrections	2.7	2.6
Mt Evans Qualifying House	11.6	11.4
Reflections For Youth Inc., Grismore	1.0	0.9
Reflections For Youth Inc., Prairie View	3.0	1.8
ROP-Canyon State Academy	0.8	0.9
Southwest Colorado Community Corrections	0.0	0.3
Summit Treatment Service, Inc	18.6	18.7
Synergy Administration	10.4	10.7
Third Way Center	5.6	4.7
Third Way Center, Pontiac	8.2	7.9
Third Way Center, York	8.1	8.3
Third Way Center, Lincoln	3.8	3.1
Turning Point Center (Boys Residential)	17.2	15.6
Turning Point, Mathews St.	5.2	6.8
Youthtrack, San Luis Valley	1.8	1.3
Youthtrack, Work and Learn	9.6	8.7
Youth Ventures	5.2	6.5
<i>Community Subtotal</i>	<i>160.2</i>	<i>161.7</i>
<i>Private Contract Total</i>	<i>683.1</i>	<i>726.2</i>
Other Residential		
Job Corps Parole Program (Federally funded)	6.2	4.9
Shelter Care (short term)	1.7	0.9
Hospital	0.0	0.1
Immigration Detention Facility	3.2	1.8
Residential MH Program	3.0	3.1
Residential Drug/Alcohol Program	0.2	0.2
Residential Work Program	4.4	2.1
CMHI-Ft.Logan	0.0	0.6
CMHI-Pueblo	1.0	2.0
Other Mental Health Facility	1.0	0.6
<i>Other Residential Total*</i>	<i>20.0</i>	<i>18.4</i>
RESIDENTIAL TOTAL	1,127.7	1,201.5

*Other Residential Total may not accurately sum due to Trails-related issues

January 2010 DYC Population Report

IV. Commitment ADP and New Commitments by Region

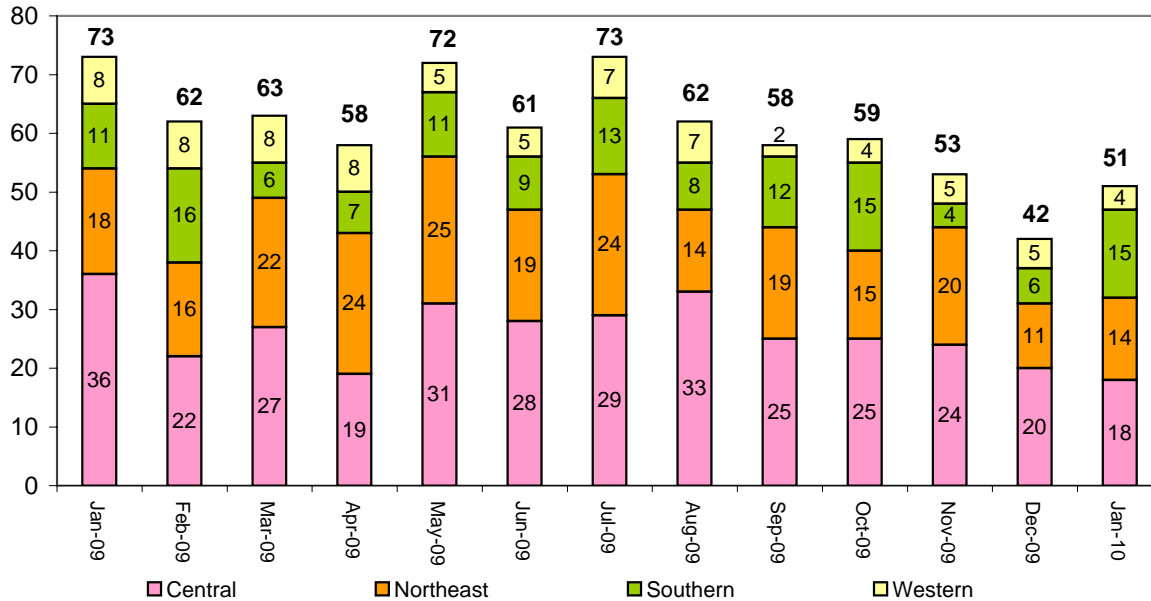
Commitment ADP by Region

Region	<u>January 2010</u>	<u>% Change from prev. mo.</u>	<u>YTD</u>
Central Region	510.1	-4.0%	543.7
Northeast Region	297.6	-4.4%	316.2
Southern Region	214.1	-1.6%	229.8
Western Region	105.9	-1.4%	111.7
Commitment ADP Total	1,127.7	-3.4%	1,201.5

New Commitments by Region

	<u>January 2010</u>	<u>YTD</u>	<u>% Change from last YTD</u>	<u>January 2009</u>	<u>Last YTD</u>
Central Region	18	182	-4.2%	36	190
Northeast Region	14	119	22.7%	18	97
Southern Region	15	78	-13.3%	11	90
Western Region	4	38	-30.9%	8	55
New Commitment Total	51	417	-3.5%	73	432

Monthly New Commitments



January 2010 DYC Population Report

V. Parole Services

Parole ADP by Region

	<u>Jan. 2010</u>	<u>YTD</u>	<u>Last YTD</u>	<u>% Change from last YTD</u>
Central Region	196.5	175.6	189.5	-7.4%
Northeast Region	123.6	121.9	128.0	-4.7%
Southern Region	93.7	88.6	97.8	-9.4%
Western Region	43.3	43.9	45.0	-2.6%
Parole Total	457.1	429.9	460.3	-6.6%

Parole Intakes Parole Discharges Parole LOS

	<u>Jan. 2010</u>	<u>YTD</u>	<u>Jan. 2010</u>	<u>YTD</u>	<u>YTD</u>
Central Region	29	206	16	172	6.4
Northeast Region	22	134	15	130	7.6
Southern Region	9	96	9	82	6.9
Western Region	4	50	6	44	6.1
Parole Total	64	486	46	428	6.8

Monthly Parole ADP

