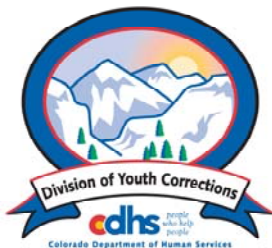


DECEMBER 2009 MONTHLY POPULATION REPORT

Prepared by the Division of Youth Corrections Research and Evaluation Unit January 20, 2010



Colorado Department of Human Services
Division of Youth Corrections

Working with Colorado Communities to Achieve Justice

December 2009

DYC Population Report

I.	Summary Population Data	1
II.	Detention ADP by Facility	2
III.	Commitment Services	
	A. State and Contract Secure ADP by Facility	3
	B. Community/Other Residential ADP by Facility	4
IV.	ADP and New Commitments by Region	5
V.	Parole Services	6

December 2009 DYC Population Report

I. Summary Population Data*

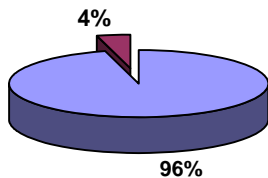
DETAINED YOUTH	Average Daily Population (ADP)			Length of Stay (LOS)
	December 2009	% Change from prev. mo.	YTD	YTD
State-Operated	330.4	-3.5%	340.6	14.2 days
Contracted Staff Secure	12.2	-3.3%	14.3	12.4 days
Total Detained	342.7	-3.5%	354.9	14.1 days

COMMITTED YOUTH	Average Daily Population (ADP)			Length of Stay (LOS)
	December 2009		YTD	YTD
State Secure	497.1	-3.8%	500.3	
Private Secure/Staff Supervised	488.9	-4.4%	533.7	
Community Residential	163.4	1.0%	163.0	
Other Residential	18.0	-4.0%	16.7	
Total Committed Residential	1,167.4	-3.4%	1,213.8	19.2 months
<i>Committed Residential w/o Boulder</i>	<i>1,164.5</i>	<i>-3.6%</i>	<i>1,211.3</i>	

PAROLED YOUTH	Average Daily Population (ADP)			Length of Stay (LOS)
	December 2009		YTD	YTD
Total Paroled	452.1	2.3%	425.5	6.8 months

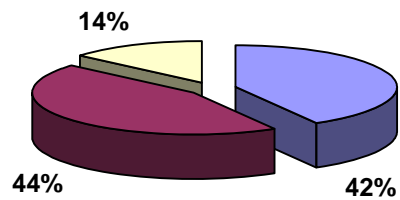
TOTAL STATEWIDE ADP	December 2009	% Change	YTD
	1,962.2	-2.2%	1,994.2

Detention ADP
Year to Date



■ State-Operated
■ Contracted Staff Secure

Commitment ADP
Year to Date



■ State Secure
■ Private Secure/Staff Supervised
■ Community Residential

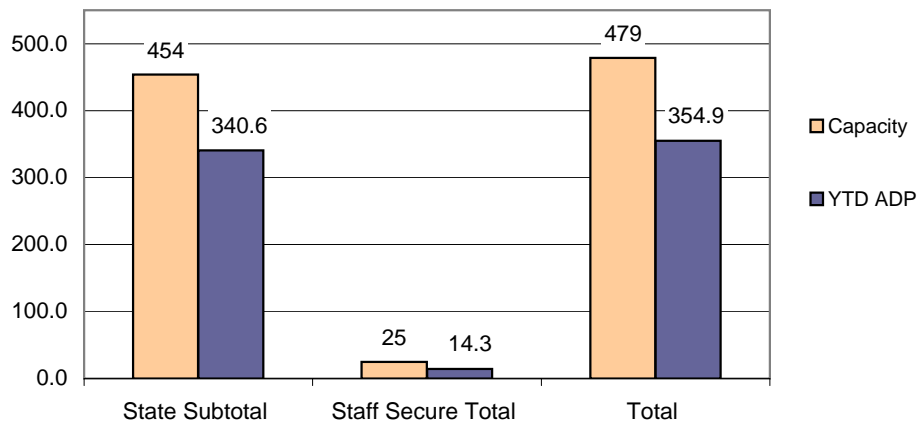
*Due to rounding, totals shown may not be an exact sum of the subtotals

December 2009 DYC Population Report

II. Detention Program Services

Facility	Average Daily Population				New Admissions		YTD LOS in Days
	Operating Capacity	December 2009	YTD	YTD % of Capacity	December 2009	YTD	LOS
<i>State Operated Detention</i>							
Adams	29	21.2	21.2	73.3%	40	332	11.2
Gilliam	73	51.8	57.2	78.3%	80	544	19.1
Grand Mesa	31	24.9	21.7	70.0%	36	218	15.0
Marvin Foote	92	72.6	73.3	79.6%	121	748	17.4
Mount View	60	36.6	36.4	60.7%	72	453	14.3
Platte Valley	69	55.0	60.2	87.2%	125	907	12.0
Pueblo	42	23.4	28.5	67.8%	48	430	11.8
Spring Creek	58	44.7	42.1	72.6%	106	598	12.3
<i>State Subtotal</i>	<i>454</i>	<i>330.4</i>	<i>340.6</i>	<i>75.0%</i>	<i>628</i>	<i>4,230</i>	<i>14.2</i>
<i>Staff Secure Detention</i>							
Brown Center	2	1.4	1.2	58.8%	3	9	24.8
Midway (Remington)	8	3.8	5.2	64.6%	9	83	10.6
Robert DeNier	9	3.2	5.5	61.3%	10	72	15.7
Youthtrack San Luis Valley	6	3.9	2.5	41.2%	11	54	8.1
<i>Staff Secure Total</i>	<i>25</i>	<i>12.2</i>	<i>14.3</i>	<i>57.3%</i>	<i>33</i>	<i>218</i>	<i>12.4</i>
TOTAL	479	342.7	354.9	74.1%	661	4,448	14.1

**Detention
YTD ADP vs. Capacity**



December 2009

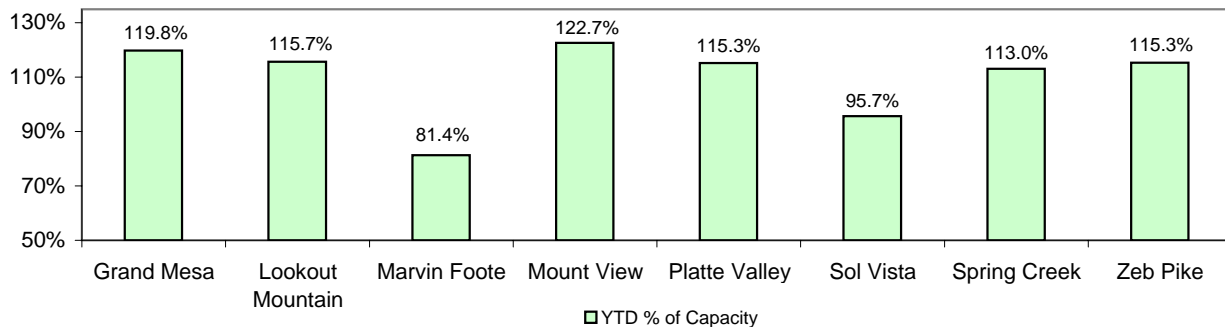
DYC Population Report

III. Commitment Services

A. State and Contract Secure ADP by Facility

Facility	FY 2009-10 Capacity Jul 01 to Sep 30	Monthly Budgeted Capacity at 120%	YTD Budgeted Capacity at 120%	ADP		YTD % of Design Capacity	YTD % of Budgeted Capacity
				December 2009	YTD		
State Secure							
Adams	0	0	0	0.0	0.2	N/A	N/A
Gilliam	0	0	0	0.6	1.0	N/A	N/A
Grand Mesa	40	48	48	47.9	46.1	119.8%	95.5%
Lookout	152	178	176	175.8	172.6	115.7%	97.9%
Marvin Foote	20	26	25	16.3	19.5	81.4%	77.0%
Mount View	66	80	79	81.0	77.7	122.7%	98.6%
Platte Valley	59	72	71	68.0	71.5	115.3%	100.2%
Pueblo	0	0	0	0.6	0.2	N/A	N/A
Sol Vista	20	20	20	19.1	19.7	95.7%	98.4%
Spring Creek	41	53	52	46.4	50.7	113.0%	98.2%
Zeb Pike	36	44	43	41.5	41.5	115.3%	97.5%
<i>State Total</i>	<i>434</i>	<i>521.4</i>	<i>514.0</i>	<i>497.1</i>	<i>500.3</i>	<i>114.5%</i>	<i>96.0%</i>
Contract Secure/Staff Supervised							
Alternative Homes For Youth - Greeley				9.7	8.0		
Betty K. Marler Center				40.7	40.6		
Brown Center				2.2	2.5		
Childrens Ark				2.0	3.0		
Devereux Cleo Wallace				12.1	15.8		
Gateway Residential Program				1.9	3.1		
Griffith Centers for Children				0.0	0.2		
Hand Up Homes for Youth - West				2.5	2.7		
Hilltop (Residential Youth Services)				7.5	9.4		
Jefferson Hills				16.5	15.8		
Jefferson Hills Aurora				37.2	37.5		
Mountain Star Center				3.5	2.3		
Ridge View				321.1	356.3		
Robert DeNier				17.9	16.2		
Southern Peaks				8.9	14.0		
Third Way Center - Lowry				4.4	5.4		
Youth Villages				1.0	1.0		
<i>Contract Secure Subtotal</i>				<i>488.9</i>	<i>533.7</i>		

**State Secure Commitment
Percent of Design Capacity by Facility**



December 2009

DYC Population Report

III. Commitment Services Continued

B. Community/Other Residential APD by Facility

<u>Facility</u>	<u>December</u> <u>2009</u>	<u>YTD</u>
Community		
Ariel Clinical Services	3.0	2.8
Boulder Community Treatment Center	0.3	0.4
Community Corrections and Work Release	0.0	0.5
Dale House Project	13.7	12.4
Daybreak & Daybreak Princeton	9.3	7.8
Denver Area Youth Services (DAYS)	3.6	4.6
Gateway Youth and Family Services	0.3	1.7
Griffith Centers (SR)	1.2	1.9
Job Corps	4.0	5.0
Kidz Ark Sterling	5.7	3.0
Larimer Community Corrections	3.0	1.7
Lost and Found Inc., Arvada	11.6	10.5
Lost and Found Inc., Morrison	0.0	1.4
Mesa County Community Corrections	2.4	2.6
Mt Evans Qualifying House	10.1	11.3
Reflections For Youth Inc., Grismore	0.0	0.6
Reflections For Youth Inc., Prairie View	3.7	1.9
ROP-Canyon State Academy	0.7	0.9
Southwest Colorado Community Corrections	0.0	0.3
Summit Treatment Service, Inc	19.3	18.7
Synergy Administration	10.6	10.8
Third Way Center	5.0	4.6
Third Way Center, Pontiac	9.8	7.8
Third Way Center, York	7.7	8.2
Third Way Center, Lincoln	3.6	3.0
Turning Point Center (Boys Residential)	17.8	15.3
Turning Point, Mathews St.	4.5	7.0
Youthtrack, San Luis Valley	1.6	1.2
Youthtrack, Work and Learn	7.7	8.5
Youth Ventures	3.6	6.7
<i>Community Subtotal</i>	<i>163.4</i>	<i>163.0</i>
<i>Private Contract Total</i>	<i>686.3</i>	<i>727.5</i>
Other Residential		
Job Corps Parole Program (Federally funded)	4.9	4.7
Shelter Care (short term)	0.6	0.8
Hospital	0.0	0.1
Immigration Detention Facility	2.3	1.5
Residential MH Program	2.9	3.1
Residential Drug/Alcohol Program	0.0	0.2
Residential Work Program	3.1	1.7
CMHI-Ft.Logan	0.0	0.7
CMHI-Pueblo	1.9	2.2
Other Mental Health Facility	2.0	0.5
<i>Other Residential Total*</i>	<i>18.0</i>	<i>16.7</i>
RESIDENTIAL TOTAL	1,167.4	1,213.8

*Other Residential Total may not accurately sum due to Trails-related issues

December 2009 DYC Population Report

IV. Commitment ADP and New Commitments by Region

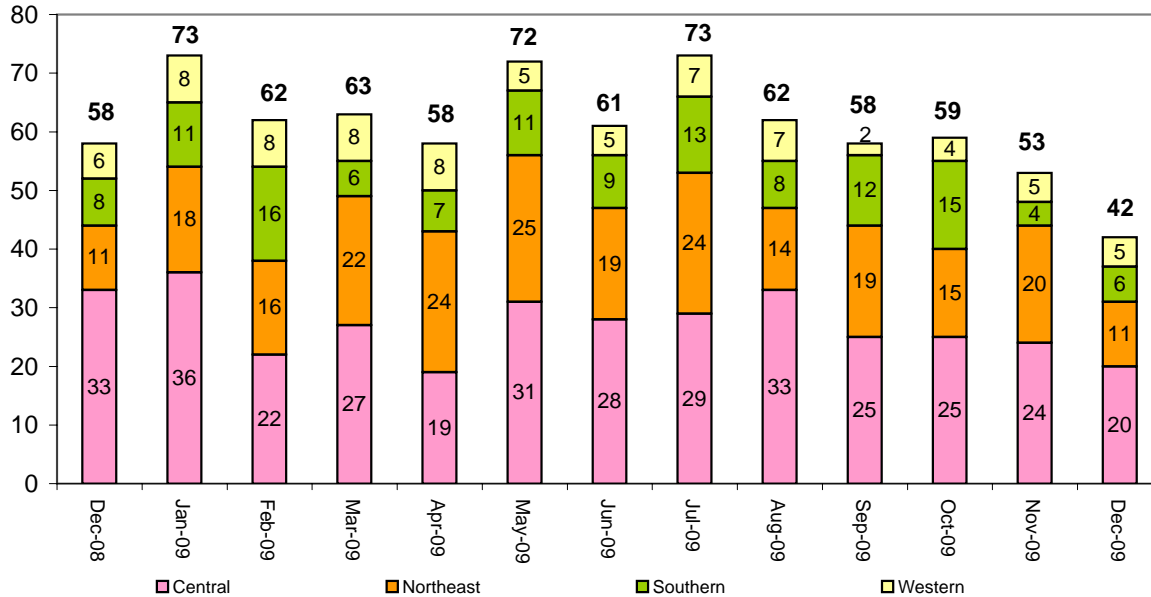
Commitment ADP by Region

Region	<u>December 2009</u>	<u>% Change from prev. mo.</u>	<u>YTD</u>
Central Region	531.1	-2.8%	548.7
Northeast Region	311.3	-2.9%	319.3
Southern Region	217.6	-4.4%	232.2
Western Region	107.4	-5.7%	113.6
Commitment ADP Total	1,167.4	-3.4%	1,213.8

New Commitments by Region

	<u>December 2009</u>	<u>YTD</u>	<u>% Change from last YTD</u>	<u>December 2008</u>	<u>Last YTD</u>
Central Region	20	161	5.2%	33	153
Northeast Region	11	104	31.6%	11	79
Southern Region	6	63	-19.2%	8	78
Western Region	5	34	-22.7%	6	44
New Commitment Total	42	362	2.3%	58	354

Monthly New Commitments



December 2009 DYC Population Report

V. Parole Services

Parole ADP by Region

	<u>Dec. 2009</u>	<u>YTD</u>	<u>Last YTD</u>	<u>% Change from last YTD</u>
Central Region	186.5	171.3	191.7	-10.6%
Northeast Region	122.0	121.7	126.9	-4.1%
Southern Region	97.1	88.3	98.4	-10.2%
Western Region	46.6	44.1	44.7	-1.4%
Parole Total	452.1	425.5	461.6	-7.8%

Parole Intakes

Parole Discharges

Parole LOS

	<u>Dec. 2009</u>	<u>YTD</u>	<u>Dec. 2009</u>	<u>YTD</u>	<u>YTD</u>
Central Region	36	174	35	154	6.3
Northeast Region	22	113	18	111	7.4
Southern Region	18	86	17	71	6.9
Western Region	8	46	8	35	6.4
Parole Total	84	419	78	371	6.8

Monthly Parole ADP

