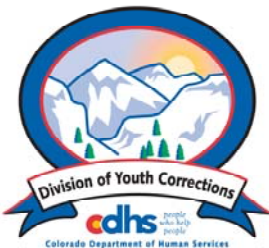


# NOVEMBER 2009 MONTHLY POPULATION REPORT

---

Prepared by the Division of Youth Corrections Research and Evaluation Unit December 15, 2009



**Colorado Department of Human Services**  
**Division of Youth Corrections**

---

Working with Colorado Communities to Achieve Justice

# November 2009

## DYC Population Report

<b>I.</b>	<b>Summary Population Data</b>	<b>1</b>
<b>II.</b>	<b>Detention ADP by Facility</b>	<b>2</b>
<b>III.</b>	<b>Commitment Services</b>	
	A. State and Contract Secure ADP by Facility	<b>3</b>
	B. Community/Other Residential ADP by Facility	<b>4</b>
<b>IV.</b>	<b>ADP and New Commitments by Region</b>	<b>5</b>
<b>V.</b>	<b>Parole Services</b>	<b>6</b>

# November 2009 DYC Population Report

## I. Summary Population Data\*

DETAINED YOUTH	Average Daily Population (ADP)			Length of Stay (LOS)
	November 2009	% Change from prev. mo.	YTD	YTD
State-Operated	342.3	-0.9%	343.1	14.0 days
Contracted Staff Secure	12.7	18.5%	14.7	12.8 days
<b>Total Detained</b>	<b>354.9</b>	<b>-0.3%</b>	<b>357.8</b>	<b>14.0 days</b>

COMMITTED YOUTH	Average Daily Population (ADP)			Length of Stay (LOS)
	November 2009		YTD	YTD
State Secure	517.0	-4.7%	501.0	
Private Secure/Staff Supervised	511.2	0.8%	542.8	
Community Residential	161.8	-2.9%	162.6	
Other Residential	18.7	11.6%	17.9	
<b>Total Committed Residential</b>	<b>1,208.7</b>	<b>-2.0%</b>	<b>1,224.2</b>	<b>18.9 months</b>
<i>Committed Residential w/o Boulder</i>	<i>1,207.4</i>	<i>-2.0%</i>	<i>1,221.8</i>	

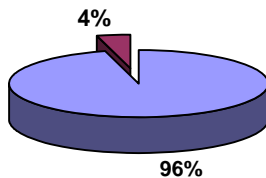
  

PAROLED YOUTH	Average Daily Population (ADP)			Length of Stay (LOS)
	November 2009		YTD	YTD
Total Paroled	442.1	6.7%	417.5	6.8 months

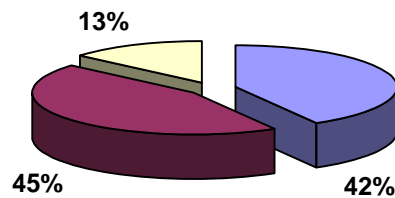
TOTAL STATEWIDE ADP	November 2009	% Change	YTD
	<b>2,005.7</b>	<b>0.1%</b>	<b>1,999.5</b>

**Detention ADP  
Year to Date**



■ State-Operated  
■ Contracted Staff Secure

**Commitment ADP  
Year to Date**



■ State Secure  
■ Private Secure/Staff Supervised  
■ Community Residential

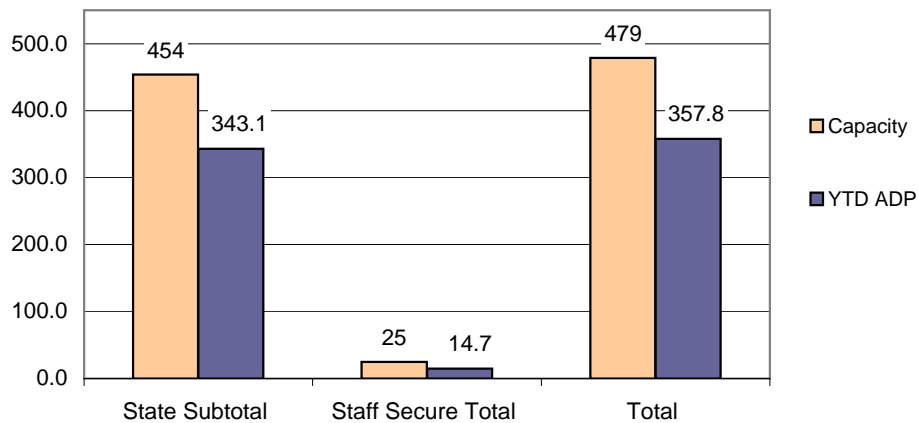
\*Due to rounding, totals shown may not be an exact sum of the subtotals

# November 2009 DYC Population Report

## II. Detention ADP by Facility

Facility	Average Daily Population				New Admissions		YTD LOS in Days
	Operating Capacity	November 2009	YTD	YTD % of Capacity	November 2009	YTD	LOS
<i>State Operated Detention</i>							
Adams	29	20.6	21.2	73.3%	48	292	10.7
Gilliam	73	57.7	58.3	79.8%	104	463	19.2
Grand Mesa	31	20.8	21.1	67.9%	27	182	14.8
Marvin Foote	92	76.8	73.7	80.1%	130	628	17.0
Mount View	60	37.1	36.4	60.7%	81	381	14.1
Platte Valley	69	65.2	61.3	88.8%	147	783	11.7
Pueblo	42	26.3	29.5	70.2%	67	382	11.8
Spring Creek	58	37.8	41.6	71.7%	100	492	12.4
<i>State Subtotal</i>	<i>454</i>	<i>342.3</i>	<i>343.1</i>	<i>75.6%</i>	<i>704</i>	<i>3,603</i>	<i>14.0</i>
<i>Staff Secure Detention</i>							
Brown Center	2	0.1	1.1	56.7%	1	6	29.9
Midway (Remington)	8	6.0	5.4	67.8%	7	73	10.4
Robert DeNier	9	4.1	6.0	66.6%	10	62	16.7
Youthtrack San Luis Valley	6	2.4	2.2	36.4%	10	43	8.2
<i>Staff Secure Total</i>	<i>25</i>	<i>12.7</i>	<i>14.7</i>	<i>58.9%</i>	<i>28</i>	<i>184</i>	<i>12.8</i>
<b>TOTAL</b>	<b>479</b>	<b>354.9</b>	<b>357.8</b>	<b>74.7%</b>	<b>732</b>	<b>3,787</b>	<b>14.0</b>

**Detention  
YTD ADP vs. Capacity**



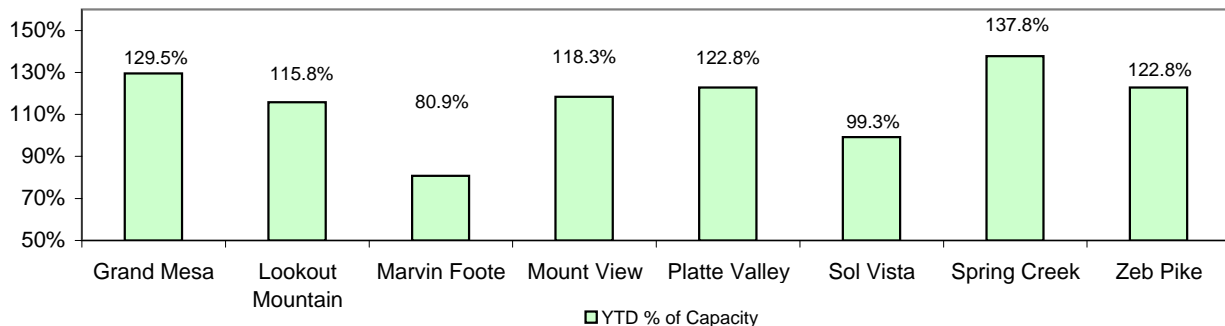
# November 2009 DYC Population Report

## III. Commitment Services

### A. State and Contract Secure ADP by Facility

Facility	FY 2009-10 Capacity Jul 01 to Sep 30	Monthly Budgeted Capacity at 120%	YTD Budgeted Capacity at 120%	ADP		YTD % of Design Capacity	YTD % of Budgeted Capacity
				November 2009	YTD		
<b>State Secure</b>							
Adams	0	0	0	0.3	0.2	N/A	N/A
Gilliam	0	0	0	0.4	1.1	N/A	N/A
Grand Mesa	40	48	48	51.8	45.7	129.5%	94.8%
Lookout	152	178	176	176.0	171.9	115.8%	97.5%
Marvin Foote	20	26	25	16.2	20.1	80.9%	79.5%
Mount View	66	80	79	78.1	77.0	118.3%	97.7%
Platte Valley	59	72	71	72.5	72.2	122.8%	101.2%
Pueblo	0	0	0	1.3	0.1	N/A	N/A
Sol Vista	20	20	20	19.9	19.8	99.3%	98.9%
Spring Creek	41	53	52	56.5	51.6	137.8%	99.9%
Zeb Pike	36	44	43	44.2	41.4	122.8%	97.5%
<i>State Total</i>	<i>434</i>	<i>521.4</i>	<i>514.0</i>	<i>517.0</i>	<i>501.0</i>	<i>119.1%</i>	<i>96.1%</i>
<b>Contract Secure/Staff Supervised</b>							
Alternative Homes For Youth - Greeley				9.4	7.6		
Betty K. Marler Center				40.4	40.6		
Brown Center				1.6	2.6		
Childrens Ark				0.9	3.2		
Devereux Cleo Wallace				13.9	16.6		
Gateway Residential Program				2.0	3.3		
Griffith Centers for Children				0.0	0.3		
Hand Up Homes for Youth - West				2.0	2.7		
Hilltop (Residential Youth Services)				8.1	9.7		
Jefferson Hills				16.7	15.7		
Jefferson Hills Aurora				37.8	37.6		
Mountain Star Center				3.0	2.1		
Ridge View				340.9	363.5		
Robert DeNier				17.9	15.8		
Southern Peaks				9.1	15.1		
Third Way Center - Lowry				6.6	5.6		
Youth Villages				1.0	1.0		
<i>Contract Secure Subtotal</i>				<i>511.2</i>	<i>542.8</i>		

**State Secure Commitment  
Percent of Design Capacity by Facility**



# November 2009

## DYC Population Report

### III. Commitment Services Continued

#### B. Community/Other Residential APD by Facility

<u>Facility</u>	<u>November</u> <u>2009</u>	<u>YTD</u>
<b>Community</b>		
Ariel Clinical Services	2.5	2.8
Boulder Community Treatment Center	0.0	0.4
Community Corrections and Work Release	0.4	0.6
Dale House Project	10.9	12.1
Daybreak & Daybreak Princeton	9.6	7.5
Denver Area Youth Services (DAYS)	5.0	4.7
Gateway Youth and Family Services	0.3	1.9
Griffith Centers (SR)	2.0	2.0
Job Corps	5.8	5.3
Kidz Ark Sterling	5.0	2.5
Larimer Community Corrections	2.6	1.4
Lost and Found Inc., Arvada	10.6	10.3
Lost and Found Inc., Morrison	0.0	1.7
Mesa County Community Corrections	2.4	2.6
Mt Evans Qualifying House	9.5	11.6
Reflections For Youth Inc., Grismore	0.0	0.7
Reflections For Youth Inc., Prairie View	3.0	1.6
ROP-Canyon State Academy	1.0	1.0
Southwest Colorado Community Corrections	0.0	0.4
Summit Treatment Service, Inc	19.9	18.6
Synergy Administration	10.5	10.8
Third Way Center	5.4	4.5
Third Way Center, Pontiac	9.0	7.4
Third Way Center, York	7.2	7.9
Third Way Center, Lincoln	3.1	2.9
Turning Point Center (Boys Residential)	18.2	14.8
Turning Point, Mathews St.	6.3	7.5
Youthtrack, San Luis Valley	1.1	1.1
Youthtrack, Work and Learn	6.4	8.7
Youth Ventures	4.2	7.3
<i>Community Subtotal</i>	<i>161.8</i>	<i>162.6</i>
<i>Private Contract Total</i>	<i>684.7</i>	<i>727.1</i>
<b>Other Residential</b>		
Job Corps Parole Program (Federally funded)	5.6	4.4
Shelter Care (short term)	0.4	0.8
Hospital	0.0	0.1
Immigration Detention Facility	2.1	1.4
Residential MH Program	3.6	3.1
Residential Drug/Alcohol Program	0.0	0.2
Residential Work Program	2.0	1.4
CMHI-Ft.Logan	0.5	0.9
CMHI-Pueblo	1.5	2.3
Other Mental Health Facility	0.9	0.2
<i>Other Residential Total*</i>	<i>18.7</i>	<i>17.9</i>
<b>RESIDENTIAL TOTAL</b>	<b>1,208.7</b>	<b>1,224.2</b>

\*Other Residential Total may not accurately sum due to Trails-related issues

# November 2009 DYC Population Report

## IV. Commitment ADP and New Commitments by Region

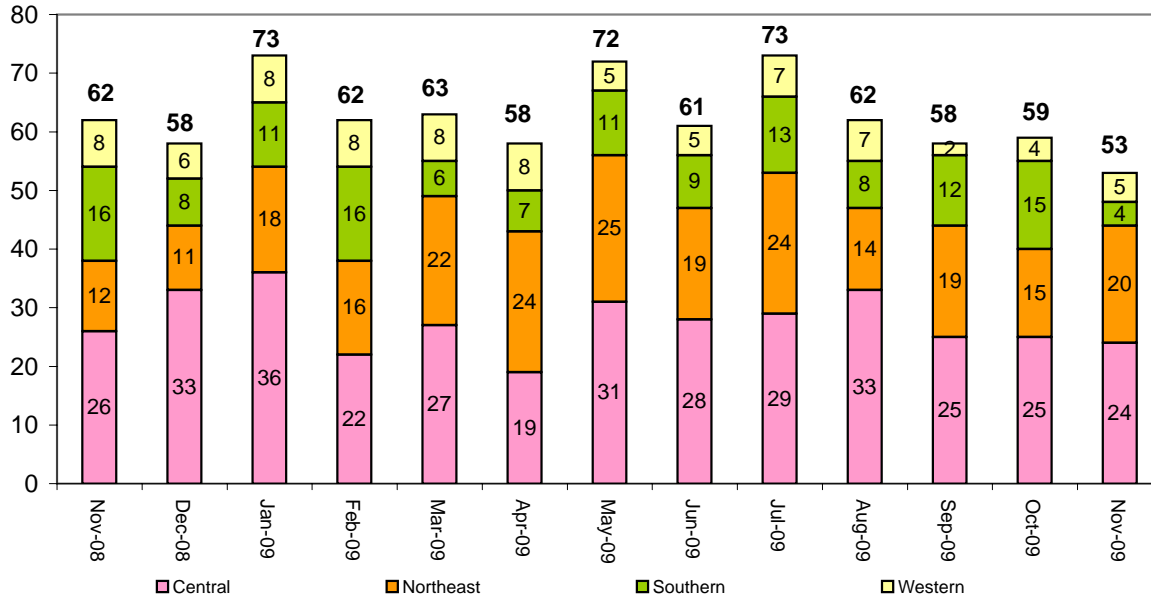
### Commitment ADP by Region

Region	<u>November 2009</u>	<u>% Change from prev. mo.</u>	<u>YTD</u>
Central Region	546.4	-3.3%	552.9
Northeast Region	320.7	-0.9%	321.1
Southern Region	227.7	-1.1%	233.7
Western Region	113.9	-0.3%	116.6
<b>Commitment ADP Total</b>	<b>1,208.7</b>	<b>-2.0%</b>	<b>1,224.2</b>

### New Commitments by Region

	<u>November 2009</u>	<u>YTD</u>	<u>% Change from last YTD</u>	<u>November 2008</u>	<u>Last YTD</u>
Central Region	24	139	15.8%	26	120
Northeast Region	20	93	36.8%	12	68
Southern Region	4	57	-18.6%	16	70
Western Region	5	29	-23.7%	8	38
<b>New Commitment Total</b>	<b>53</b>	<b>318</b>	<b>7.4%</b>	<b>62</b>	<b>296</b>

### Monthly New Commitments



# November 2009 DYC Population Report

## V. Parole Services

### Parole ADP by Region

	<u>Nov. 2009</u>	<u>YTD</u>	<u>Last YTD</u>	<u>% Change from last YTD</u>
Central Region	185.3	168.8	193.1	-12.6%
Northeast Region	119.6	121.6	127.3	-4.5%
Southern Region	93.5	84.4	100.5	-16.0%
Western Region	43.7	42.7	43.5	-1.8%
<b>Parole Total</b>	<b>442.1</b>	<b>417.5</b>	<b>464.4</b>	<b>-10.1%</b>

### Parole Intakes

### Parole Discharges

### Parole LOS

	<u>Nov. 2009</u>	<u>YTD</u>	<u>Nov. 2009</u>	<u>YTD</u>	<u>YTD</u>
Central Region	32	138	22	118	6.4
Northeast Region	26	90	18	91	7.4
Southern Region	15	66	6	53	6.7
Western Region	8	38	7	27	7.0
<b>Parole Total</b>	<b>81</b>	<b>332</b>	<b>53</b>	<b>289</b>	<b>6.8</b>

### Monthly Parole ADP

