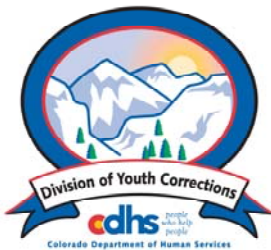


OCTOBER 2009 MONTHLY POPULATION REPORT

Prepared by the Division of Youth Corrections Research and Evaluation Unit November 18, 2009



Colorado Department of Human Services
Division of Youth Corrections

Working with Colorado Communities to Achieve Justice

October 2009

DYC Population Report

I.	Summary Population Data	1
II.	Detention ADP by Facility	2
III.	Commitment Services	
	A. State and Contract Secure ADP by Facility	3
	B. Community/Other Residential ADP by Facility	4
IV.	ADP and New Commitments by Region	5
V.	Parole Services	6

October 2009 DYC Population Report

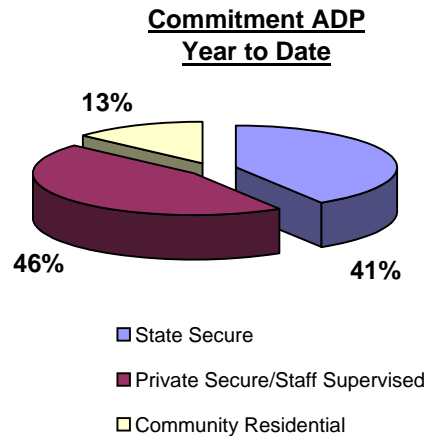
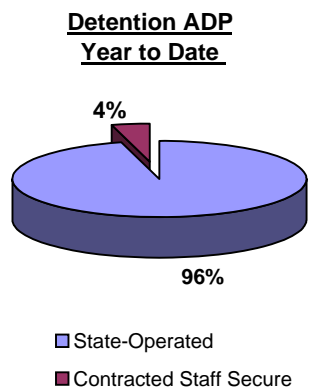
I. Summary Population Data*

DETAINED YOUTH	Average Daily Population (ADP)			Length of Stay (LOS)
	October 2009	% Change from prev. mo.	YTD	YTD
State-Operated	345.3	0.8%	342.9	14.0 days
Contracted Staff Secure	10.7	-21.8%	15.3	11.8 days
Total Detained	355.9	-0.1%	358.2	13.9 days

COMMITTED YOUTH	Average Daily Population (ADP)			Length of Stay (LOS)
	October 2009		YTD	YTD
State Secure	542.6	4.7%	496.9	
Private Secure/Staff Supervised	507.3	-3.0%	549.8	
Community Residential	166.6	-0.2%	162.9	
Other Residential	16.8	14.8%	16.6	
Total Committed Residential	1,233.2	0.9%	1,226.2	18.2 months
<i>Committed Residential w/o Boulder</i>	<i>1,232.2</i>	<i>1.0%</i>	<i>1,223.5</i>	

PAROLED YOUTH	Average Daily Population (ADP)			Length of Stay (LOS)
	October 2009		YTD	YTD
Total Paroled	414.2	0.6%	410.8	6.7 months

TOTAL STATEWIDE ADP	October 2009		YTD	
	2,003.4	0.6%	1,995.2	

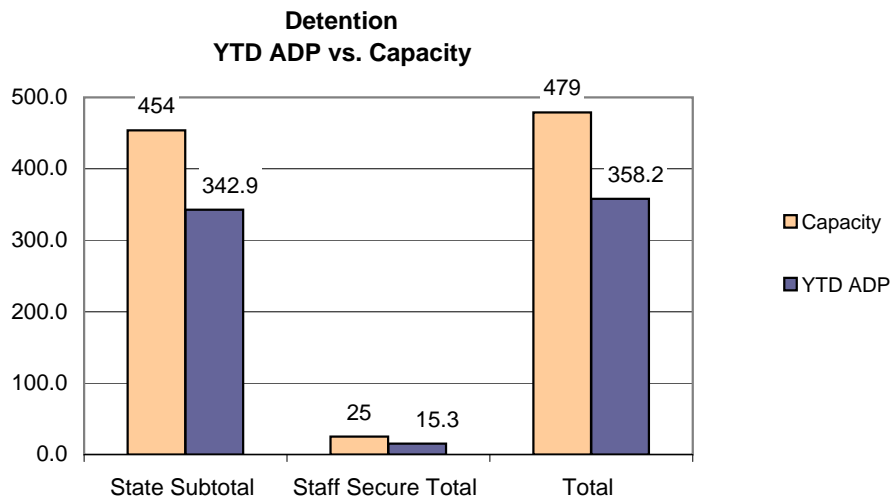


*Due to rounding, totals shown may not be an exact sum of the subtotals

October 2009 DYC Population Report

II. Detention ADP by Facility Detention Data by Facility

Facility	Operating Capacity	Average Daily Population			New Admissions		YTD LOS in Days
		October 2009	YTD	YTD % of Capacity	October 2009	YTD	LOS
<i>State Operated Detention</i>							
Adams	29	22.0	21.4	73.8%	57	244	10.4
Gilliam	73	57.5	58.4	80.0%	93	359	19.6
Grand Mesa	31	21.5	21.1	68.1%	45	155	14.8
Marvin Foote	92	71.6	73.0	79.3%	117	499	17.7
Mount View	60	32.3	36.2	60.4%	92	300	14.5
Platte Valley	69	63.0	60.3	87.4%	175	636	11.4
Pueblo	42	29.9	29.9	71.3%	81	315	11.5
Spring Creek	58	47.4	42.5	73.3%	110	392	12.3
<i>State Subtotal</i>	<i>454</i>	<i>345.3</i>	<i>342.9</i>	<i>75.5%</i>	<i>770</i>	<i>2,900</i>	<i>14.0</i>
<i>Staff Secure Detention</i>							
Brown Center	2	1.4	1.4	69.8%	3	5	29.9
Midway (Remington)	8	4.9	5.3	66.0%	16	66	9.1
Robert DeNier	9	3.5	6.5	71.8%	8	53	14.4
Youthtrack San Luis Valley	6	0.9	2.1	35.3%	6	33	8.9
<i>Staff Secure Total</i>	<i>25</i>	<i>10.7</i>	<i>15.3</i>	<i>61.0%</i>	<i>33</i>	<i>157</i>	<i>11.8</i>
TOTAL	479	355.9	358.2	74.8%	803	3,057	13.9



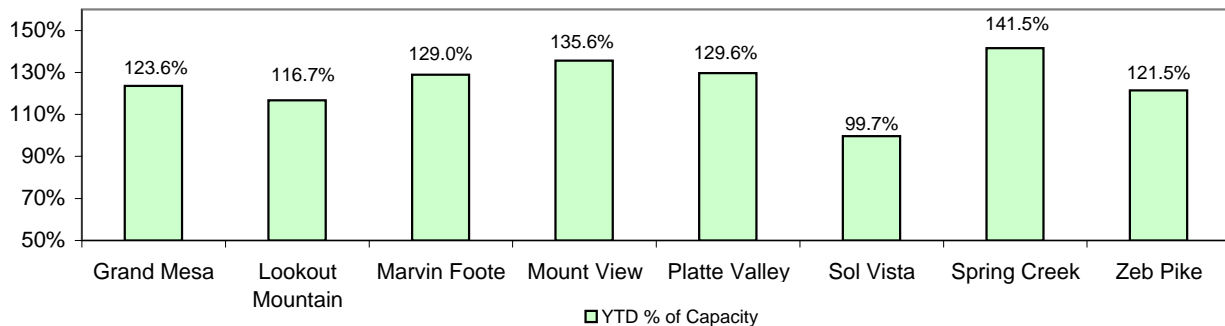
October 2009 DYC Population Report

III. Commitment Services

A. State and Contract Secure ADP by Facility

Facility	FY 2009-10 Capacity Jul 01 to Sep 30	Monthly Budgeted Capacity at 120%	YTD Budgeted Capacity at 120%	ADP		YTD % of Design Capacity	YTD % of Budgeted Capacity
				October 2009	YTD		
State Secure							
Adams	0	0	0	0.1	0.2	N/A	N/A
Gilliam	0	0	0	1.1	1.3	N/A	N/A
Grand Mesa	40	48	48	49.4	44.2	123.6%	91.6%
Lookout	152	178	176	177.4	171.0	116.7%	97.0%
Marvin Foote	20	26	25	25.8	21.1	129.0%	83.3%
Mount View	66	80	79	89.5	76.7	135.6%	97.4%
Platte Valley	59	72	71	76.5	72.1	129.6%	101.1%
Pueblo	0	0	0	1.0	0.1	N/A	N/A
Sol Vista	20	20	20	19.9	19.3	99.7%	96.6%
Spring Creek	41	53	52	58.0	50.2	141.5%	97.3%
Zeb Pike	36	44	43	43.7	40.8	121.5%	95.9%
<i>State Total</i>	<i>434</i>	<i>521.4</i>	<i>514.0</i>	<i>542.6</i>	<i>496.9</i>	<i>125.0%</i>	<i>95.3%</i>
Contract Secure/Staff Supervised							
Alternative Homes For Youth - Greeley				7.1	7.2		
Betty K. Marler Center				40.4	40.6		
Brown Center				2.0	2.8		
Childrens Ark				1.5	3.8		
Devereux Cleo Wallace				14.3	17.2		
Gateway Residential Program				2.0	3.1		
Griffith Centers for Children				0.0	0.3		
Hand Up Homes for Youth - West				2.5	2.9		
Hilltop (Residential Youth Services)				7.8	10.1		
Jefferson Hills				16.3	15.4		
Jefferson Hills Aurora				32.6	37.5		
Mountain Star Center				2.3	1.9		
Ridge View				344.3	369.0		
Robert DeNier				17.6	15.3		
Southern Peaks				10.4	16.5		
Third Way Center - Lowry				5.3	5.3		
Youth Villages				1.0	1.0		
<i>Contract Secure Subtotal</i>				<i>507.3</i>	<i>549.8</i>		

**State Secure Commitment
Percent of Design Capacity by Facility**



October 2009

DYC Population Report

III. Commitment Services Continued

B. Community/Other Residential ADP by Facility

<u>Facility</u>	<u>October</u> <u>2009</u>	<u>YTD</u>
Community		
Ariel Clinical Services	2.0	2.9
Boulder Community Treatment Center	0.0	0.4
Community Corrections and Work Release	1.0	0.6
Dale House Project	12.3	12.4
Daybreak & Daybreak Princeton	8.3	7.0
Denver Area Youth Services (DAYS)	5.0	4.7
Gateway Youth and Family Services	2.0	2.3
Griffith Centers (SR)	2.0	2.0
Job Corps	6.7	5.2
Kidz Ark Sterling	3.4	1.9
Larimer Community Corrections	2.0	1.2
Lost and Found Inc., Arvada	10.8	10.2
Lost and Found Inc., Morrison	0.6	2.1
Mesa County Community Corrections	3.0	2.7
Mt Evans Qualifying House	10.4	12.1
Reflections For Youth Inc., Grismore	0.9	0.9
Reflections For Youth Inc., Prairie View	1.9	1.2
ROP-Canyon State Academy	1.0	1.0
Southwest Colorado Community Corrections	0.0	0.5
Summit Treatment Service, Inc	19.4	18.3
Synergy Administration	11.3	10.9
Third Way Center	7.0	5.0
Third Way Center, Pontiac	8.5	7.0
Third Way Center, York	8.5	8.3
Third Way Center, Lincoln	1.1	2.3
Turning Point Center (Boys Residential)	16.7	14.0
Turning Point, Mathews St.	7.8	7.8
Youthtrack, San Luis Valley	1.0	1.1
Youthtrack, Work and Learn	7.3	9.0
Youth Ventures	5.0	8.1
<i>Community Subtotal</i>	<i>166.6</i>	<i>162.9</i>
<i>Private Contract Total</i>	<i>673.9</i>	<i>712.7</i>
Other Residential		
Job Corps Parole Program (Federally funded)	3.1	4.1
Shelter Care (short term)	1.1	0.9
Hospital	0.5	0.2
Immigration Detention Facility	1.2	1.2
Residential MH Program	3.7	3.6
Residential Drug/Alcohol Program	0.0	0.3
Residential Work Program	2.0	1.3
CMHI-Ft.Logan	1.1	1.0
CMHI-Pueblo	2.2	2.5
Other Mental Health Facility	0.0	0.1
<i>Other Residential Total*</i>	<i>16.8</i>	<i>16.6</i>
RESIDENTIAL TOTAL	1,233.2	1,226.2

*Other Residential Total may not accurately sum due to Trails-related issues

October 2009 DYC Population Report

IV. Commitment ADP and New Commitments by Region

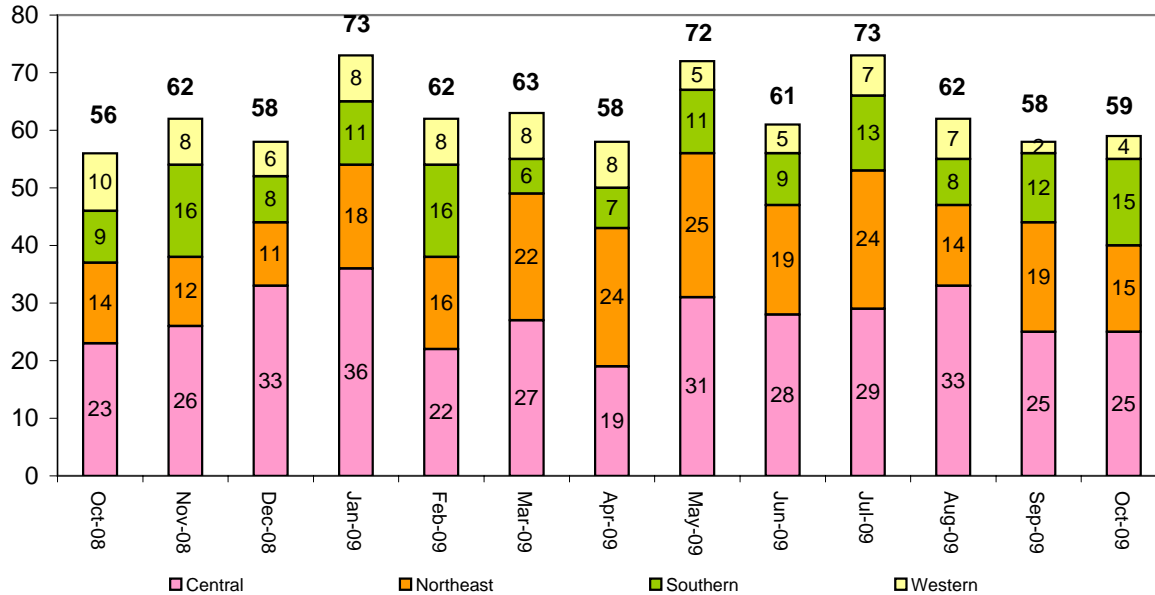
Commitment ADP by Region

Region	<u>October 2009</u>	<u>% Change from prev. mo.</u>	<u>YTD</u>
Central Region	565.2	2.1%	554.6
Northeast Region	323.7	1.0%	319.6
Southern Region	230.2	-0.3%	234.0
Western Region	114.2	-2.8%	118.0
Commitment ADP Total	1,233.2	0.9%	1,226.2

New Commitments by Region

	<u>October 2009</u>	<u>YTD</u>	<u>% Change from last YTD</u>	<u>October 2008</u>	<u>Last YTD</u>
Central Region	25	115	23.7%	23	93
Northeast Region	15	73	30.4%	14	56
Southern Region	15	50	-7.4%	9	54
Western Region	4	21	-30.0%	10	30
New Commitment Total	59	259	11.2%	56	233

Monthly New Commitments



October 2009 DYC Population Report

V. Parole Services

Parole ADP by Region

	<u>Oct. 2009</u>	<u>YTD</u>	<u>Last YTD</u>	<u>% Change from last YTD</u>
Central Region	169.4	164.6	192.6	-14.5%
Northeast Region	114.2	121.7	125.5	-3.1%
Southern Region	87.6	82.2	102.3	-19.7%
Western Region	43.0	42.3	41.7	1.4%
Parole Total	414.2	410.8	462.2	-11.1%

Parole Intakes

Parole Discharges

Parole LOS

	<u>Oct. 2009</u>	<u>YTD</u>	<u>Oct. 2009</u>	<u>YTD</u>	<u>YTD</u>
Central Region	26	103	25	96	6.7
Northeast Region	11	64	14	72	7.1
Southern Region	13	50	13	47	6.5
Western Region	7	30	3	19	6.2
Parole Total	57	247	55	234	6.7

Monthly Parole ADP

