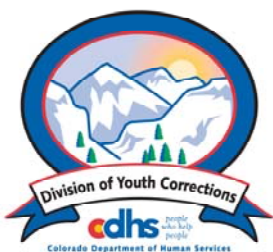


SEPTEMBER 2009 MONTHLY POPULATION REPORT

Prepared by the Division of Youth Corrections Research and Evaluation Unit October 22, 2009



Colorado Department of Human Services
Division of Youth Corrections

Working with Colorado Communities to Achieve Justice

September 2009

DYC Population Report

I.	Summary Population Data	1
II.	Detention ADP by Facility	2
III.	Commitment Services	
	A. State and Contract Secure ADP by Facility	3
	B. Community/Other Residential ADP by Facility	4
IV.	ADP and New Commitments by Region	5
V.	Parole Services	6

September 2009 DYC Population Report

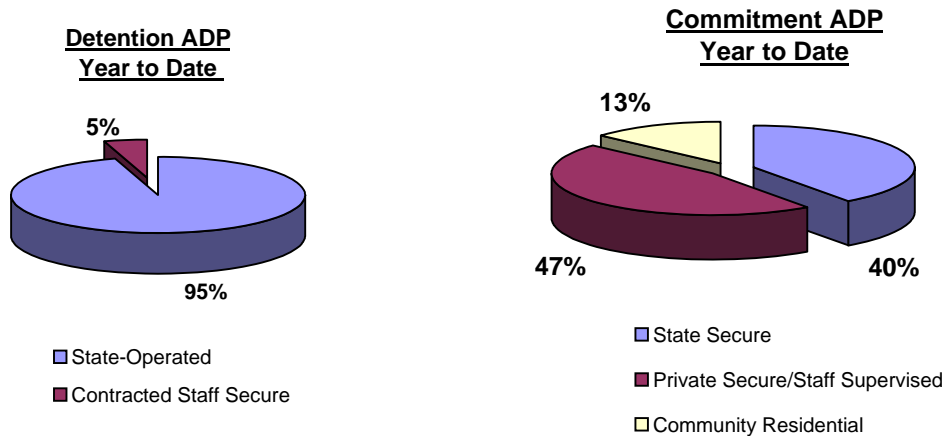
I. Summary Population Data*

DETAINED YOUTH	Average Daily Population (ADP)			Length of Stay (LOS)
	September 2009	% Change from prev. mo.	YTD	YTD
State-Operated	342.6	3.0%	342.5	14.1 days
Contracted Staff Secure	13.7	-28.3%	16.8	11.9 days
Total Detained	356.3	1.3%	359.3	14.0 days

COMMITTED YOUTH	Average Daily Population (ADP)			Length of Stay (LOS)
	September 2009		YTD	YTD
State Secure	518.1	11.7%	482.1	
Private Secure/Staff Supervised	522.9	-8.8%	564.5	
Community Residential	167.0	2.9%	161.5	
Other Residential	14.6	5.1%	14.6	
Total Committed Residential	1,222.7	0.7%	1,222.7	18.6 months
<i>Committed Residential w/o Boulder</i>	<i>1,219.7</i>	<i>0.8%</i>	<i>1,219.4</i>	

PAROLED YOUTH	Average Daily Population (ADP)			Length of Stay (LOS)
	September 2009		YTD	YTD
Total Paroled	411.8	1.6%	405.7	6.6 months

TOTAL STATEWIDE ADP	September 2009	% Change	YTD
	1,990.7	1.0%	1,987.7

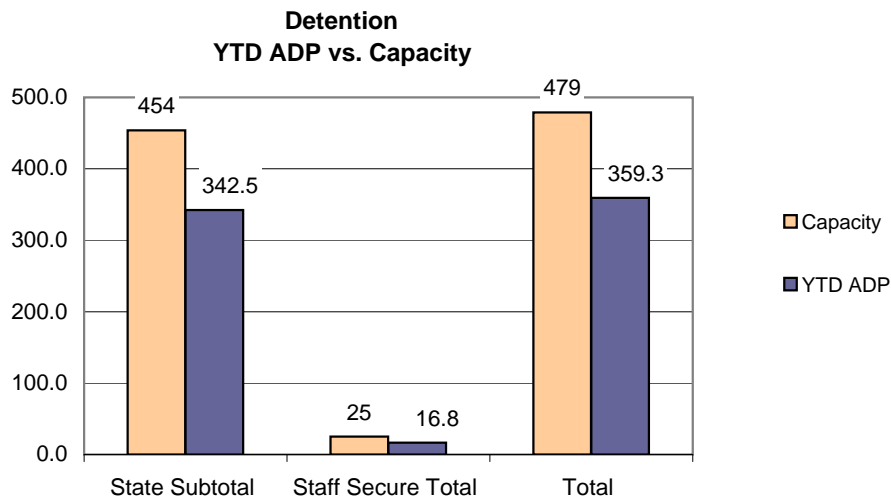


*Due to rounding, totals shown may not be an exact sum of the subtotals

September 2009 DYC Population Report

II. Detention Program Services Continued Detention Data by Facility

Facility	Average Daily Population				New Admissions		YTD LOS in Days
	Operating Capacity	September 2009	YTD	YTD % of Capacity	September 2009	YTD	LOS
<i>State Operated Detention</i>							
Adams	29	22.5	21.2	73.1%	53	187	10.0
Gilliam	73	56.1	58.6	80.3%	86	267	18.3
Grand Mesa	31	21.2	21.0	67.7%	33	110	14.5
Marvin Foote	92	72.1	73.4	79.8%	129	382	18.1
Mount View	60	37.3	37.6	62.6%	70	208	15.8
Platte Valley	69	55.9	60.1	87.2%	135	463	11.7
Pueblo	42	28.5	29.6	70.5%	71	234	11.7
Spring Creek	58	48.9	41.0	70.7%	118	282	12.5
<i>State Subtotal</i>	<i>454</i>	<i>342.6</i>	<i>342.5</i>	<i>75.4%</i>	<i>695</i>	<i>2,133</i>	<i>14.1</i>
<i>Staff Secure Detention</i>							
Brown Center	2	0.8	1.4	69.4%	0	2	41.3
Midway (Remington)	8	4.2	5.4	67.6%	12	50	9.1
Robert DeNier	9	7.1	7.5	83.1%	16	45	14.0
Youthtrack San Luis Valley	6	1.6	2.5	42.2%	6	27	9.6
<i>Staff Secure Total</i>	<i>25</i>	<i>13.7</i>	<i>16.8</i>	<i>67.2%</i>	<i>34</i>	<i>124</i>	<i>11.9</i>
TOTAL	479	356.3	359.3	75.0%	729	2,257	14.0



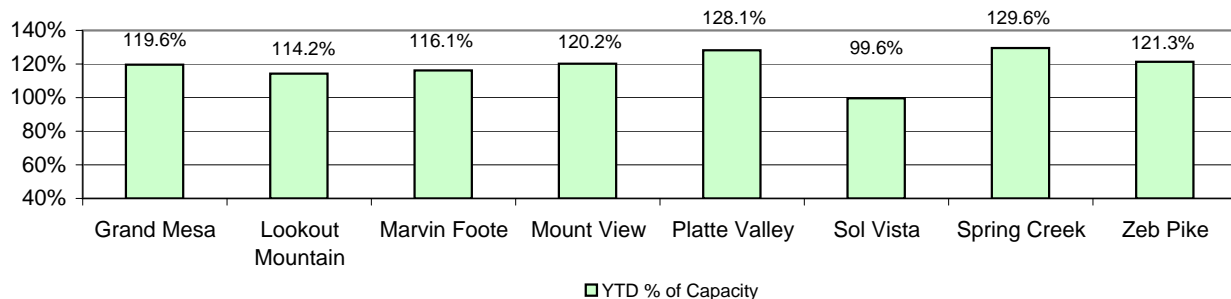
September 2009 DYC Population Report

III. Commitment Services

A. State and Contract Secure ADP by Facility

Facility	FY 2009-10 Capacity Jul 01 to Sep 30	Monthly Budgeted Capacity at 120%	YTD Budgeted Capacity at 120%	ADP		YTD % of Design Capacity	YTD % of Budgeted Capacity
				September 2009	YTD		
State Secure							
Adams	0	0	0	0.2	0.2	N/A	N/A
Gilliam	0	0	0	1.5	1.4	N/A	N/A
Grand Mesa	40	49	48	47.9	42.4	119.6%	88.0%
Lookout	152	178	176	173.6	168.8	114.2%	95.8%
Marvin Foote	20	26	25	23.2	19.4	116.1%	76.7%
Mount View	66	80	79	79.4	72.4	120.2%	91.9%
Platte Valley	59	72	71	75.6	70.6	128.1%	99.0%
Pueblo	0	0	0	0.0	0.2	N/A	N/A
Sol Vista	20	20	20	19.9	19.1	99.6%	95.6%
Spring Creek	41	53	52	53.1	47.8	129.6%	92.6%
Zeb Pike	36	43	43	43.7	39.8	121.3%	93.6%
<i>State Total</i>	<i>434</i>	<i>521.4</i>	<i>514.0</i>	<i>518.1</i>	<i>482.1</i>	<i>119.4%</i>	<i>92.5%</i>
Contract Secure/Staff Supervised							
Alternative Homes For Youth - Greeley				7.4	7.2		
Betty K. Marler Center				40.2	40.7		
Brown Center				2.8	3.1		
Childrens Ark				2.5	4.6		
Devereux Cleo Wallace				17.1	18.3		
Gateway Residential Program				2.1	3.4		
Griffith Centers for Children				0.0	0.4		
Hand Up Homes for Youth - West				3.0	3.0		
Hilltop (Residential Youth Services)				9.2	10.9		
Jefferson Hills				15.3	15.1		
Jefferson Hills Aurora				35.7	39.2		
Mountain Star Center				2.1	1.7		
Ridge View				350.0	377.5		
Robert DeNier				15.7	14.5		
Southern Peaks				13.6	18.6		
Third Way Center - Lowry				5.3	5.3		
Youth Villages				1.0	1.0		
<i>Contract Secure Subtotal</i>				<i>522.9</i>	<i>564.5</i>		

**State Secure Commitment
Percent of Design Capacity by Facility**



September 2009

DYC Population Report

III. Commitment Services Continued

B. Community/Other Residential APD by Facility

<u>Facility</u>	<u>September</u> <u>2009</u>	<u>YTD</u>
Community		
Ariel Clinical Services	2.4	3.2
Boulder Community Treatment Center	1.0	0.6
Community Corrections and Work Release	1.0	0.5
Dale House Project	12.0	12.4
Daybreak & Daybreak Princeton	6.0	6.6
Denver Area Youth Services (DAYS)	5.0	4.6
Gateway Youth and Family Services	2.0	2.4
Griffith Centers (SR)	2.0	2.0
Job Corps	6.1	4.7
Kidz Ark Sterling	2.5	1.4
Larimer Community Corrections	1.8	0.9
Lost and Found Inc., Arvada	11.0	10.4
Lost and Found Inc., Morrison	2.0	2.3
Mesa County Community Corrections	3.0	2.6
Mt Evans Qualifying House	11.3	12.5
Reflections For Youth Inc., Grismore	1.5	0.9
Reflections For Youth Inc., Prairie View	1.0	1.0
ROP-Canyon State Academy	1.0	1.0
Southwest Colorado Community Corrections	1.0	0.6
Summit Treatment Service, Inc	19.6	17.9
Synergy Administration	10.4	10.7
Third Way Center	5.3	4.3
Third Way Center, Pontiac	6.8	6.5
Third Way Center, York	8.0	8.2
Third Way Center, Lincoln	3.1	2.7
Turning Point Center (Boys Residential)	15.1	13.1
Turning Point, Mathews St.	7.8	7.8
Youthtrack, San Luis Valley	1.0	1.2
Youthtrack, Work and Learn	8.8	9.8
Youth Ventures	7.8	9.1
<i>Community Subtotal</i>	<i>167.0</i>	<i>161.5</i>
<i>Private Contract Total</i>	<i>689.9</i>	<i>726.0</i>
Other Residential		
Job Corps Parole Program (Federally funded)	3.3	3.5
Shelter Care (short term)	2.1	1.4
Hospital	0.1	0.1
Immigration Detention Facility	1.5	1.2
Residential MH Program	3.9	3.5
Residential Drug/Alcohol Program	0.0	0.4
Residential Work Program	1.7	1.0
CMHI-Ft.Logan	1.2	0.9
CMHI-Pueblo	2.0	2.5
Other Mental Health Facility	0.0	0.1
<i>Other Residential Total*</i>	<i>14.6</i>	<i>14.6</i>
RESIDENTIAL TOTAL	1,222.7	1,222.7

*Other Residential Total may not accurately sum due to Trails-related issues

September 2009 DYC Population Report

IV. Commitment ADP and New Commitments by Region

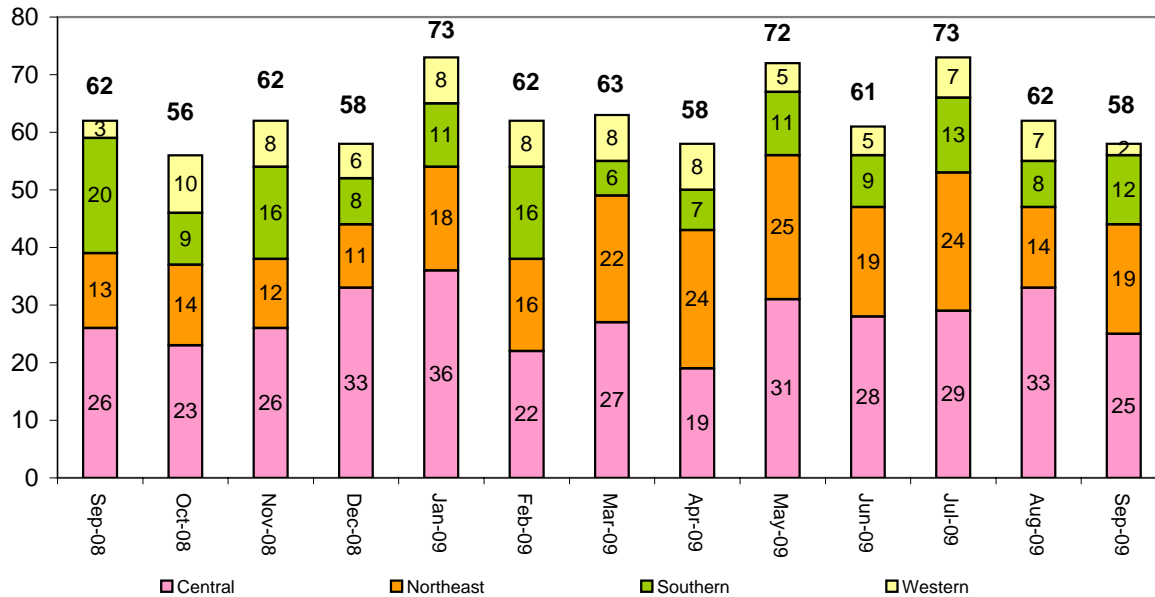
Commitment ADP by Region

Region	<u>September 2009</u>	<u>% Change from prev. mo.</u>	<u>YTD</u>
Central Region	553.7	1.4%	551.0
Northeast Region	320.5	0.9%	319.6
Southern Region	230.9	-0.6%	233.8
Western Region	117.5	0.1%	118.3
Commitment ADP Total	1,222.7	0.7%	1,222.7

New Commitments by Region

	<u>September 2009</u>	<u>YTD</u>	<u>% Change from last YTD</u>	<u>September 2008</u>	<u>Last YTD</u>
Central Region	25	87	24.3%	26	70
Northeast Region	19	58	38.1%	13	42
Southern Region	12	35	-22.2%	20	45
Western Region	2	16	-20.0%	3	20
New Commitment Total	58	196	10.7%	62	177

Monthly New Commitments



September 2009 DYC Population Report

V. Parole Services

Parole ADP by Region

	<u>Sept. 2009</u>	<u>YTD</u>	<u>Last YTD</u>	<u>% Change from last YTD</u>
Central Region	165.4	160.7	189.8	-15.3%
Northeast Region	125.6	124.3	124.8	-0.4%
Southern Region	76.1	78.7	101.0	-22.1%
Western Region	44.6	42.1	41.5	1.2%
Parole Total	411.8	405.7	457.2	-11.3%

Parole Intakes

Parole Discharges

Parole LOS

	<u>Sept. 2009</u>	<u>YTD</u>	<u>Sept. 2009</u>	<u>YTD</u>	<u>YTD</u>
Central Region	18	76	20	70	6.5
Northeast Region	13	53	19	55	7.0
Southern Region	10	33	5	34	6.6
Western Region	4	23	8	16	6.2
Parole Total	45	185	52	175	6.6

Monthly Parole ADP

