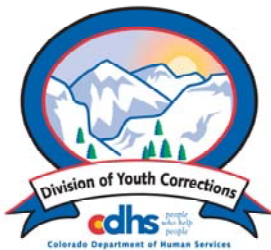


AUGUST 2009 MONTHLY POPULATION REPORT

Prepared by the Division of Youth Corrections Research and Evaluation Unit September 30, 2009



Colorado Department of Human Services
Division of Youth Corrections

Working with Colorado Communities to Achieve Justice

August 2009

DYC Population Report

I.	Summary Population Data	1
II.	Detention ADP by Facility	2
III.	Commitment Services	
	A. State and Contract Secure ADP by Facility	3
	B. Community/Other Residential ADP by Facility	4
IV.	ADP and New Commitments by Region	5
V.	Parole Services	6

August 2009 DYC Population Report

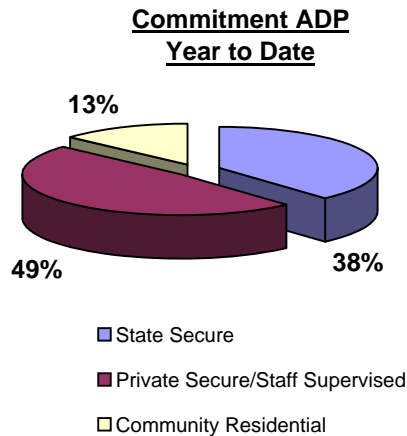
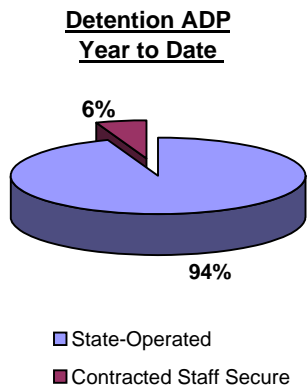
I. Summary Population Data*

DETAINED YOUTH	Average Daily Population (ADP)			Length of Stay (LOS)
	August 2009	% Change from prev. mo.	YTD	YTD
State-Operated	332.7	-6.0%	343.4	14.0 days
Contracted Staff Secure	19.0	-9.5%	20.2	12.9 days
Total Detained	351.7	-6.2%	363.6	13.9 days

COMMITTED YOUTH	Average Daily Population (ADP)			Length of Stay (LOS)
	August 2009		YTD	YTD
State Secure	463.8	-0.3%	463.3	
Private Secure/Staff Supervised	573.6	-2.8%	582.2	
Community Residential	162.3	4.4%	158.9	
Other Residential	13.9	-20.6%	16.0	
Total Committed Residential	1,213.6	-1.2%	1,220.5	19.2 months
<i>Committed Residential w/o Boulder</i>	<i>1,209.8</i>	<i>-1.2%</i>	<i>1,217.0</i>	

PAROLED YOUTH	Average Daily Population (ADP)			Length of Stay (LOS)
	August 2009		YTD	YTD
Total Paroled	405.1	1.8%	400.9	6.6 months

TOTAL STATEWIDE ADP	August 2009	% Change	YTD
	1,970.5	-1.5%	1,985.0



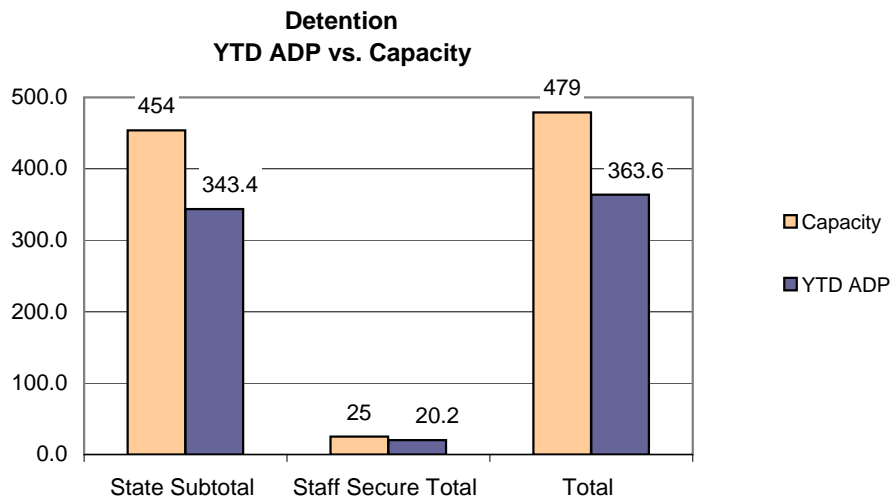
*Due to rounding, totals shown may not be an exact sum of the subtotals

August 2009 DYC Population Report

II. Detention ADP by Facility

Facility	Operating Capacity	Average Daily Population		YTD % of Capacity	New Admissions		YTD LOS in Days
		August 2009	YTD		August 2009	YTD	LOS
<i>State Operated Detention</i>							
Adams	29	19.8	20.5	70.9%	60	134	9.1
Gilliam	73	59.8	60.8	83.3%	91	181	17.8
Grand Mesa	31	17.1	20.9	67.5%	32	77	13.1
Marvin Foote	92	70.4	74.0	80.4%	112	252	18.1
Mount View	60	36.5	37.7	62.9%	65	139	16.5
Platte Valley	69	60.3	62.2	90.1%	160	328	11.4
Pueblo	42	28.4	30.2	71.8%	86	163	11.8
Spring Creek	58	40.4	37.1	64.0%	88	164	12.6
<i>State Subtotal</i>	454	332.7	343.4	75.6%	694	1,438	14.0
<i>Staff Secure Detention</i>							
Brown Center	2	1.3	1.7	83.2%	1	2	37.8
Midway (Remington)	8	5.6	6.0	75.1%	18	38	9.4
Robert DeNier	9	9.0	9.5	106.1%	17	28	16.7
Youthtrack San Luis Valley	6	3.1	3.0	49.8%	8	21	9.9
<i>Staff Secure Total</i>	25	19.0	20.2	80.8%	44	89	12.9
TOTAL	479	351.7	363.6	75.9%	738	1,527	13.9

*As of July 1, 2009, Hilltop is no longer a DYC Detention Facility

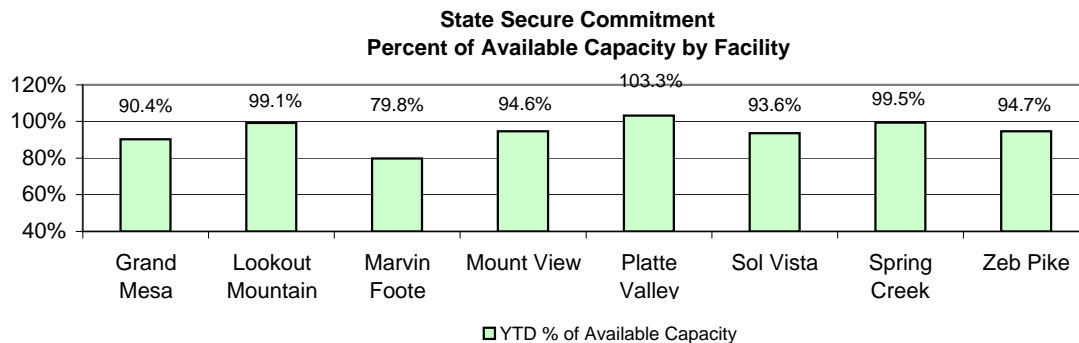


August 2009 DYC Population Report

III. Commitment Services

A. State and Contract Secure ADP by Facility

Facility	<u>Operational Capacity</u> <u>(YTD)</u>	<u>August 2009</u>	<u>YTD</u>	<u>YTD % of</u> <u>Operational</u> <u>Capacity</u>	<u>YTD % of Current</u> <u>Available Capacity</u>
State Secure					
Adams	0	0.0	0.2	N/A	N/A
Gilliam	0	0.4	0.4	N/A	N/A
Grand Mesa	44	40.0	39.8	90.4%	90.4%
Lookout	168	166.4	166.6	99.1%	99.1%
Marvin Foote	22	17.6	17.6	79.8%	79.8%
Mount View	73	68.7	69.1	94.6%	94.6%
Platte Valley	66	68.1	68.2	103.3%	103.3%
Pueblo	0	0.3	0.2	N/A	N/A
Sol Vista	20	18.7	18.7	93.6%	93.6%
Spring Creek	45	44.2	44.8	99.5%	99.5%
Zeb Pike	40	39.5	37.9	94.7%	94.7%
<i>State Total</i>	<i>478</i>	<i>463.8</i>	<i>463.3</i>	<i>96.9%</i>	<i>96.9%</i>
Contract Secure/Staff Supervised					
Alternative Homes For Youth - Greeley		7.8	7.1		
Betty K. Marler Center		41.0	40.9		
Brown Center		3.5	3.2		
Childrens Ark		4.0	5.6		
Devereux Cleo Wallace		18.9	18.9		
Gateway Residential Program		3.1	4.1		
Griffith Centers for Children		0.2	0.6		
Hand Up Homes for Youth - West		3.0	3.0		
Hilltop (Residential Youth Services)		12.2	11.7		
Jefferson Hills		15.3	15.0		
Jefferson Hills Aurora		42.5	40.9		
Mountain Star Center		1.9	1.6		
Ridge View		382.3	390.4		
Robert DeNier		12.2	11.9		
Southern Peaks		19.7	21.0		
Third Way Center - Lowry		5.2	5.3		
Youth Villages		1.0	1.0		
<i>Contract Secure Subtotal</i>		<i>573.6</i>	<i>582.2</i>		



August 2009

DYC Population Report

III. Commitment Services Continued

B. Community/Other Residential APD by Facility

<u>Facility</u>	<u>August</u> <u>2009</u>	<u>YTD</u>
Community		
Ariel Clinical Services	3.6	3.6
Boulder Community Treatment Center	0.8	0.4
Community Corrections and Work Release	0.5	0.2
Dale House Project	13.2	12.6
Daybreak & Daybreak Princeton	7.2	6.9
Denver Area Youth Services (DAYS)	4.7	4.4
Gateway Youth and Family Services	2.6	2.6
Griffith Centers (SR)	1.7	2.0
Job Corps	5.1	4.0
Kidz Ark Sterling	0.7	0.9
Larimer Community Corrections	0.1	0.4
Lost and Found Inc., Arvada	10.4	10.1
Lost and Found Inc., Morrison	2.0	2.4
Mesa County Community Corrections	2.4	2.4
Mt Evans Qualifying House	13.0	13.0
Reflections For Youth Inc., Grismore	1.0	0.6
Reflections For Youth Inc., Prairie View	1.0	1.0
ROP-Canyon State Academy	1.0	1.0
Southwest Colorado Community Corrections	0.8	0.4
Summit Treatment Service, Inc	18.4	17.0
Synergy Administration	10.4	10.9
Third Way Center	4.0	3.8
Third Way Center, Pontiac	7.3	6.4
Third Way Center, York	7.8	8.3
Third Way Center, Lincoln	2.9	2.4
Turning Point Center (Boys Residential)	11.7	12.1
Turning Point, Mathews St.	8.1	7.8
Youthtrack, San Luis Valley	1.0	1.3
Youthtrack, Work and Learn	9.6	10.2
Youth Ventures	9.5	9.7
<i>Community Subtotal</i>	<i>162.3</i>	<i>158.9</i>
<i>Private Contract Total</i>	<i>735.9</i>	<i>741.2</i>
Other Residential		
Job Corps Parole Program (Federally funded)	4.0	3.6
Shelter Care (short term)	1.8	1.1
Hospital	0.0	0.1
Residential MH Program	3.5	3.3
Residential Drug/Alcohol Program	0.1	0.6
Residential Work Program	0.7	0.7
CMHI-Ft.Logan	0.7	0.8
CMHI-Pueblo	2.0	2.8
Other Mental Health Facility	0.4	0.2
Other ADP	0.7	2.8
<i>Other Residential Total</i>	<i>13.9</i>	<i>16.0</i>
RESIDENTIAL TOTAL	1,213.6	1,220.5

August 2009 DYC Population Report

IV. ADP and New Commitments by Region

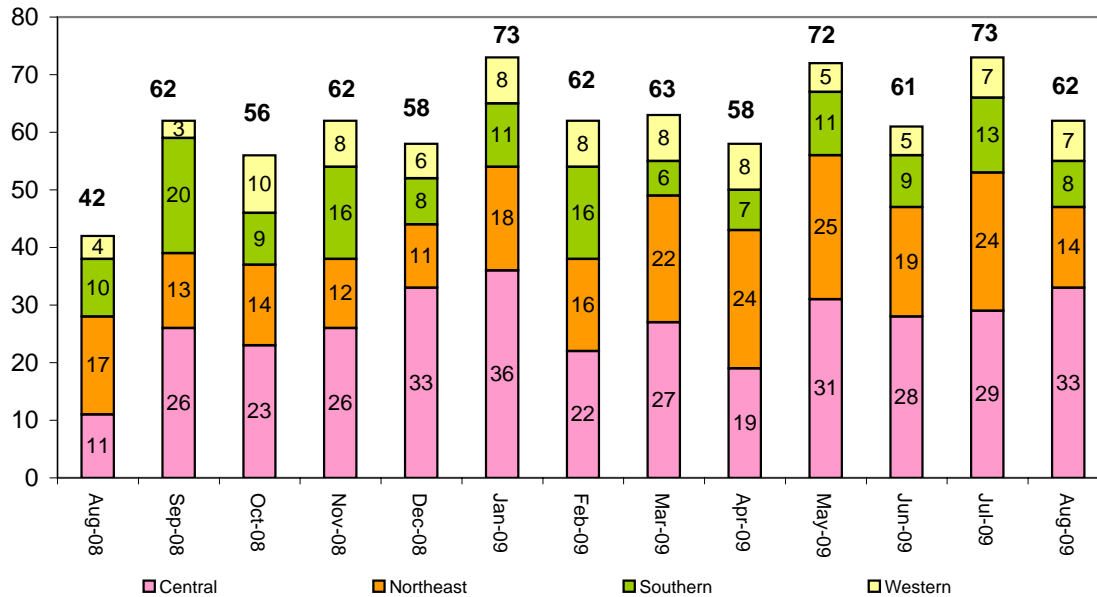
Commitment ADP by Region

Region	<u>August 2009</u>	<u>% Change from prev. mo.</u>	<u>YTD</u>
Central Region	546.3	-0.5%	547.3
Northeast Region	317.6	-1.4%	320.2
Southern Region	232.4	-2.8%	235.2
Western Region	117.4	-0.2%	117.7
Commitment ADP Total	1,213.6	-1.2%	1,220.5

New Commitments by Region

	<u>August 2009</u>	<u>YTD</u>	<u>% Change from last YTD</u>	<u>August 2008</u>	<u>Last YTD</u>
Central Region	33	62	55.0%	11	40
Northeast Region	14	38	35.7%	17	28
Southern Region	8	23	-4.2%	10	24
Western Region	7	14	-17.6%	4	17
New Commitment Total	62	137	25.7%	42	109

Monthly New Commitments



August 2009 DYC Population Report

V. Parole Services

Parole ADP by Region				
	<u>August 2009</u>	<u>YTD</u>	<u>Last YTD</u>	<u>% Change from last YTD</u>
Central Region	157.6	157.4	189.0	-16.7%
Northeast Region	128.8	125.0	122.4	2.1%
Southern Region	76.5	77.8	98.6	-21.1%
Western Region	42.2	40.8	41.8	-2.3%
Parole Total	405.1	400.9	451.7	-11.3%

	Parole Intakes		Parole Discharges		Parole LOS
	<u>August 2009</u>	<u>YTD</u>	<u>August 2009</u>	<u>YTD</u>	<u>YTD</u>
Central Region	30	58	20	50	6.5
Northeast Region	19	39	14	34	7.0
Southern Region	11	21	17	29	6.8
Western Region	9	19	4	8	5.3
Parole Total	69	137	55	121	6.6

Monthly Parole ADP

