

JULY 2009 MONTHLY POPULATION REPORT

Prepared by the Division of Youth Corrections Research and Evaluation Unit August 28, 2009



Colorado Department of Human Services
Division of Youth Corrections

Working with Colorado Communities to Achieve Justice

July 2009

DYC Population Report

I.	Summary Population Data	1
II.	Detention ADP by Facility	2
III.	Commitment Services	
	A. State and Contract Secure ADP by Facility	3
	B. Community/Other Residential ADP by Facility	4
IV.	ADP and New Commitments by Region	5
V.	Parole Services	6

July 2009 DYC Population Report

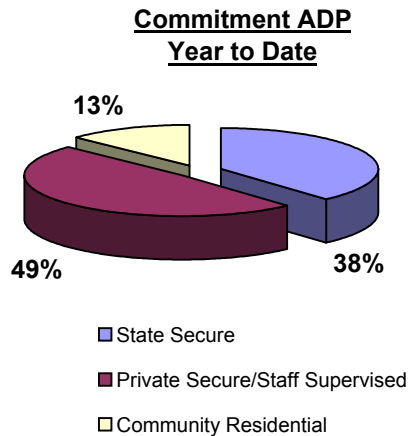
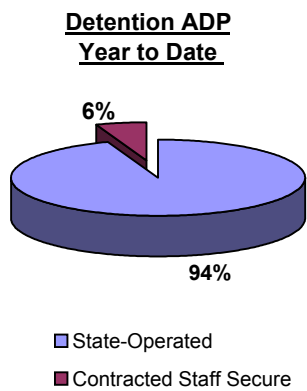
I. Summary Population Data*

DETAINED YOUTH	Average Daily Population (ADP)			Length of Stay (LOS)
	July 2009	% Change from prev. mo.	YTD	YTD
State-Operated	354.1	-6.1%	354.1	14.3 days
Contracted Staff Secure	21.0	-14.4%	21.0	12.9 days
Total Detained	375.1	-4.2%	375.1	14.2 days

COMMITTED YOUTH	Average Daily Population (ADP)			Length of Stay (LOS)
	July 2009		YTD	YTD
State Secure	465.0	-2.7%	465.0	
Private Secure/Staff Supervised	589.9	-1.7%	589.9	
Community Residential	155.5	8.2%	155.5	
Other Residential	17.5	-12.8%	17.5	
Total Committed Residential	1,227.8	-1.1%	1,227.8	18.9 months
<i>Committed Residential w/o Boulder</i>	<i>1,224.7</i>	<i>-0.9%</i>	<i>1,224.7</i>	

PAROLED YOUTH	Average Daily Population (ADP)			Length of Stay (LOS)
	July 2009		YTD	YTD
Total Paroled	397.8	0.8%	397.8	6.7 months

TOTAL STATEWIDE ADP	July 2009	% Change	YTD
	2,000.7	-1.3%	2,000.7



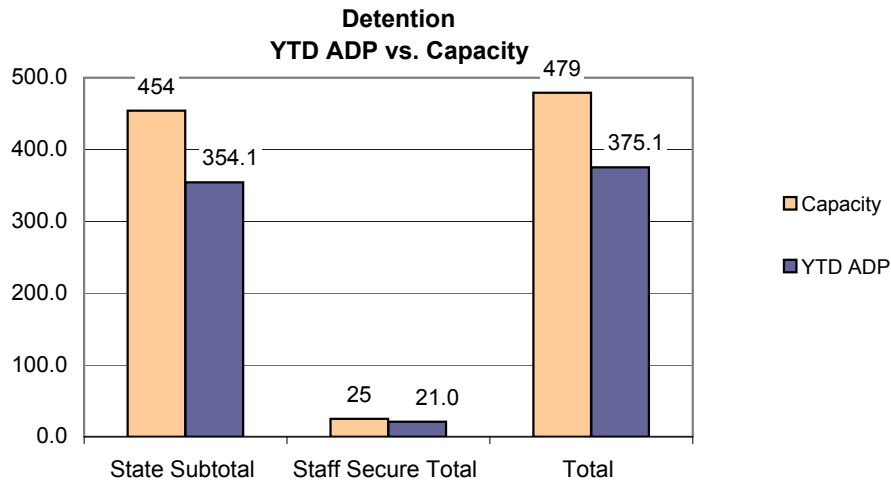
*Due to rounding, totals shown may not be an exact sum of the subtotals

July 2009 DYC Population Report

II. Detention Program Services Detention Data by Facility

Facility	Operating Capacity	Average Daily Population		YTD % of Capacity	New Admissions		YTD LOS in Days
		July 2009	YTD		July 2009	YTD	LOS
<i>State Operated Detention</i>							
Adams	29	21.3	21.3	73.4%	74	74	10.0
Gilliam	73	61.8	61.8	84.6%	90	90	18.0
Grand Mesa	31	24.7	24.7	79.7%	45	45	12.4
Marvin Foote	92	77.6	77.6	84.4%	140	140	17.3
Mount View	60	38.9	38.9	64.9%	74	74	16.6
Platte Valley	69	64.1	64.1	92.9%	168	168	12.1
Pueblo	42	31.9	31.9	76.0%	77	77	14.2
Spring Creek	58	33.8	33.8	58.2%	75	75	12.6
<i>State Subtotal</i>	<i>454</i>	<i>354.1</i>	<i>354.1</i>	<i>78.0%</i>	<i>743</i>	<i>743</i>	<i>14.3</i>
<i>Staff Secure Detention</i>							
Brown Center	2	2.0	2.0	99.8%	1	1	40.9
Midway (Remington)	8	6.4	6.4	80.3%	20	20	7.9
Robert DeNier	9	9.8	9.8	108.4%	11	11	22.2
Youthtrack San Luis Valley	6	2.9	2.9	47.6%	12	12	9.1
<i>Staff Secure Total</i>	<i>25</i>	<i>21.0</i>	<i>21.0</i>	<i>84.1%</i>	<i>44</i>	<i>44</i>	<i>12.9</i>
TOTAL	479	375.1	375.1	78.3%	787	787	14.2

*As of July 1, 2009, Hilltop is no longer a DYC Detention Facility

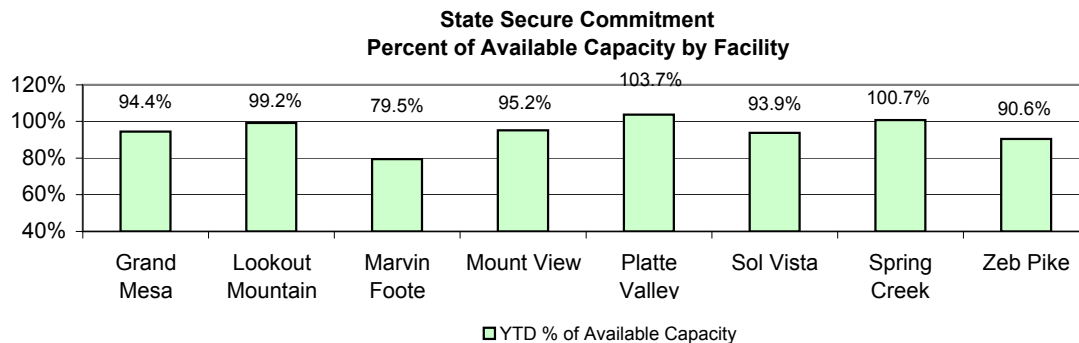


July 2009 DYC Population Report

III. Commitment Services

A. State and Contract Secure ADP by Facility

Facility	<u>Operational Capacity (YTD)</u>	<u>July 2009</u>	<u>YTD</u>	<u>YTD % of Operational Capacity</u>	<u>YTD % of Current Available Capacity</u>
State Secure					
Adams	0	0.4	0.4	N/A	N/A
Gilliam	0	0.3	0.3	N/A	N/A
Grand Mesa	44	41.6	41.6	94.4%	94.4%
Lookout	168	166.7	166.7	99.2%	99.2%
Marvin Foote	22	17.5	17.5	79.5%	79.5%
Mount View	73	69.5	69.5	95.2%	95.2%
Platte Valley	66	68.5	68.5	103.7%	103.7%
Pueblo	0	0.2	0.2	N/A	N/A
Sol Vista	20	18.8	18.8	93.9%	93.9%
Spring Creek	45	45.3	45.3	100.7%	100.7%
Zeb Pike	40	36.2	36.2	90.6%	90.6%
<i>State Total</i>	<i>478.0</i>	<i>465.0</i>	<i>465.0</i>	<i>97.3%</i>	<i>97.3%</i>
Contract Secure/Staff Supervised					
Alternative Homes For Youth - Greeley		6.5	6.5		
Betty K. Marler Center		40.9	40.9		
Brown Center		2.9	2.9		
Childrens Ark		6.2	6.2		
Devereux Cleo Wallace		19.0	19.0		
Gateway Residential Program		5.1	5.1		
Griffith Centers for Children		1.0	1.0		
Hand Up Homes for Youth - West		3.0	3.0		
Hilltop (Residential Youth Services)		11.3	11.3		
Jefferson Hills		14.7	14.7		
Jefferson Hills Aurora		39.3	39.3		
Mountain Star Center		1.2	1.2		
Ridge View		398.6	398.6		
Robert DeNier		11.6	11.6		
Southern Peaks		22.4	22.4		
Third Way Center - Lowry		5.5	5.5		
Youth Villages		1.0	1.0		
<i>Contract Secure Subtotal</i>		<i>589.9</i>	<i>589.9</i>		



July 2009

DYC Population Report

III. Commitment Services Continued

B. Community/Other Residential APD by Facility

<u>Facility</u>	<u>July 2009</u>	<u>YTD</u>
Community		
Ariel Clinical Services	3.5	3.5
Dale House Project	12.0	12.0
Daybreak & Daybreak Princeton	6.7	6.7
Denver Area Youth Services (DAYS)	4.0	4.0
Gateway Youth and Family Services	2.6	2.6
Griffith Centers (SR)	2.2	2.2
Job Corps	2.9	2.9
Kidz Ark Sterling	1.0	1.0
Larimer Community Corrections	0.7	0.7
Lost and Found Inc., Arvada	9.9	9.9
Lost and Found Inc., Morrison	2.8	2.8
Mesa County Community Corrections	2.4	2.4
Mt Evans Qualifying House	13.0	13.0
Reflections For Youth Inc., Grismore	0.3	0.3
Reflections For Youth Inc., Prairie View	1.0	1.0
ROP-Canyon State Academy	1.0	1.0
Summit Treatment Service, Inc	15.7	15.7
Synergy Administration	11.4	11.4
Third Way Center	3.5	3.5
Third Way Center, Pontiac	5.5	5.5
Third Way Center, York	8.8	8.8
Third Way Center, Lincoln	2.0	2.0
Turning Point Center (Boys Residential)	12.6	12.6
Turning Point, Mathews St.	7.5	7.5
Youthtrack, San Luis Valley	1.5	1.5
Youthtrack, Work and Learn	10.9	10.9
Youth Ventures	10.0	10.0
<i>Community Subtotal</i>	<i>155.5</i>	<i>155.5</i>
<i>Private Contract Total</i>	<i>745.4</i>	<i>745.4</i>
Other Residential		
Job Corps Parole Program (Federally funded)	2.8	2.8
Shelter Care (short term)	0.4	0.4
Hospital	0.1	0.1
Residential MH Program	3.1	3.1
Residential Drug/Alcohol Program	1.0	1.0
Residential Work Program	0.8	0.8
CMHI-Ft.Logan	0.8	0.8
CMHI-Pueblo	4.6	4.6
Other ADP	4.0	4.0
<i>Other Residential Total</i>	<i>17.5</i>	<i>17.5</i>
RESIDENTIAL TOTAL	1,227.8	1,227.8

July 2009 DYC Population Report

IV. Commitment ADP and New Commitments by Region

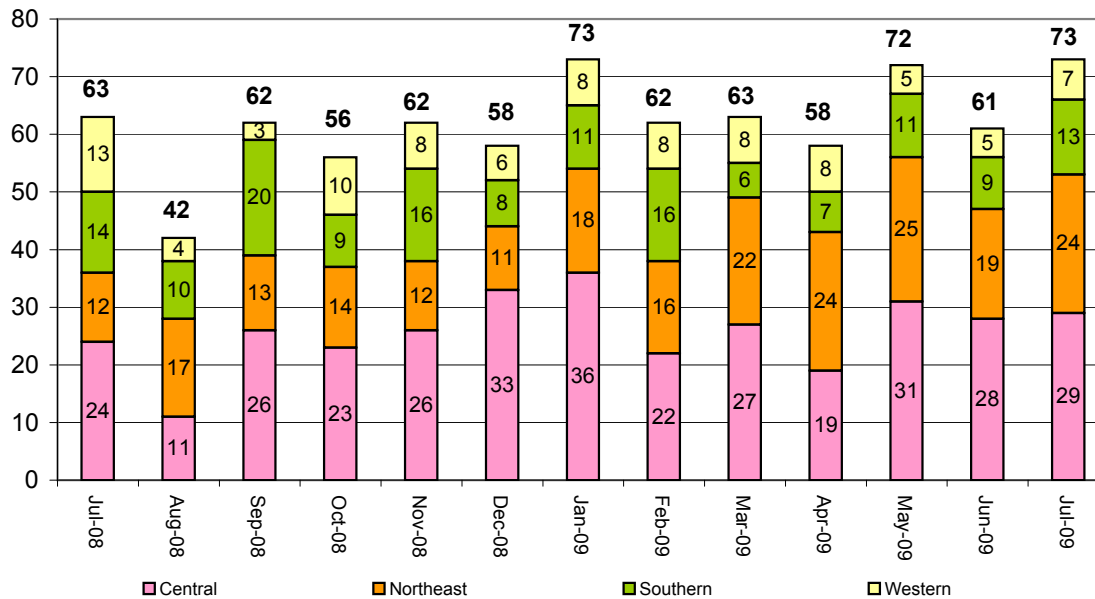
Commitment ADP by Region

Region	July 2009	% Change from prev. mo.	YTD
Central Region	549.2	-0.1%	549.2
Northeast Region	322.0	-0.9%	322.0
Southern Region	239.1	-1.3%	239.1
Western Region	117.6	-6.0%	117.6
Commitment ADP Total	1,227.8	-1.1%	1,227.8

New Commitments by Region

	July 2009	YTD	% Change from last YTD	July 2008	Last YTD
Central Region	29	29	20.8%	24	24
Northeast Region	24	24	100.0%	12	12
Southern Region	13	13	-7.1%	14	14
Western Region	7	7	-46.2%	13	13
New Commitment Total	73	73	15.9%	63	63

Monthly New Commitments



July 2009 DYC Population Report

V. Parole Services

Parole ADP by Region				
	<u>July 2009</u>	<u>YTD</u>	<u>Last YTD</u>	<u>% Change from last YTD</u>
Central Region	157.2	157.2	187.5	-16.2%
Northeast Region	121.3	121.3	120.5	0.6%
Southern Region	80.0	80.0	95.3	-16.1%
Western Region	39.4	39.4	41.5	-5.2%
Parole Total	397.8	397.8	444.8	-10.6%

	<u>Parole Intakes</u>		<u>Parole Discharges</u>		<u>Parole LOS</u>
	<u>July 2009</u>	<u>YTD</u>	<u>July 2009</u>	<u>YTD</u>	<u>YTD</u>
Central Region	28	28	30	30	6.4
Northeast Region	18	18	20	20	7.2
Southern Region	10	10	11	11	6.9
Western Region	9	9	4	4	6.0
Parole Total	65	65	65	65	6.7

